



## **CONTACT INFORMATION**

Mining Records Curator  
Arizona Geological Survey  
1520 West Adams St.  
Phoenix, AZ 85007  
602-771-1601  
<http://www.azgs.az.gov>  
[inquiries@azgs.az.gov](mailto:inquiries@azgs.az.gov)

The following file is part of the

Arizona Department of Mines and Mineral Resources Mining Collection

## **ACCESS STATEMENT**

These digitized collections are accessible for purposes of education and research. We have indicated what we know about copyright and rights of privacy, publicity, or trademark. Due to the nature of archival collections, we are not always able to identify this information. We are eager to hear from any rights owners, so that we may obtain accurate information. Upon request, we will remove material from public view while we address a rights issue.

## **CONSTRAINTS STATEMENT**

The Arizona Geological Survey does not claim to control all rights for all materials in its collection. These rights include, but are not limited to: copyright, privacy rights, and cultural protection rights. The User hereby assumes all responsibility for obtaining any rights to use the material in excess of "fair use."

The Survey makes no intellectual property claims to the products created by individual authors in the manuscript collections, except when the author deeded those rights to the Survey or when those authors were employed by the State of Arizona and created intellectual products as a function of their official duties. The Survey does maintain property rights to the physical and digital representations of the works.

## **QUALITY STATEMENT**

The Arizona Geological Survey is not responsible for the accuracy of the records, information, or opinions that may be contained in the files. The Survey collects, catalogs, and archives data on mineral properties regardless of its views of the veracity or accuracy of those data.

08/05/91

ARIZONA DEPARTMENT OF MINES AND MINERAL RESOURCES FILE DATA

PRIMARY NAME: BIG BUG COPPER

ALTERNATE NAMES:

BLACK HILLS

YAVAPAI COUNTY MILS NUMBER: 1012B

LOCATION: TOWNSHIP 12 N RANGE 2 E SECTION 7 QUARTER S2  
LATITUDE: N 34DEG 25MIN 58SEC LONGITUDE: W 112DEG 11MIN 24SEC  
TOPO MAP NAME: MAYER - 7.5 MIN

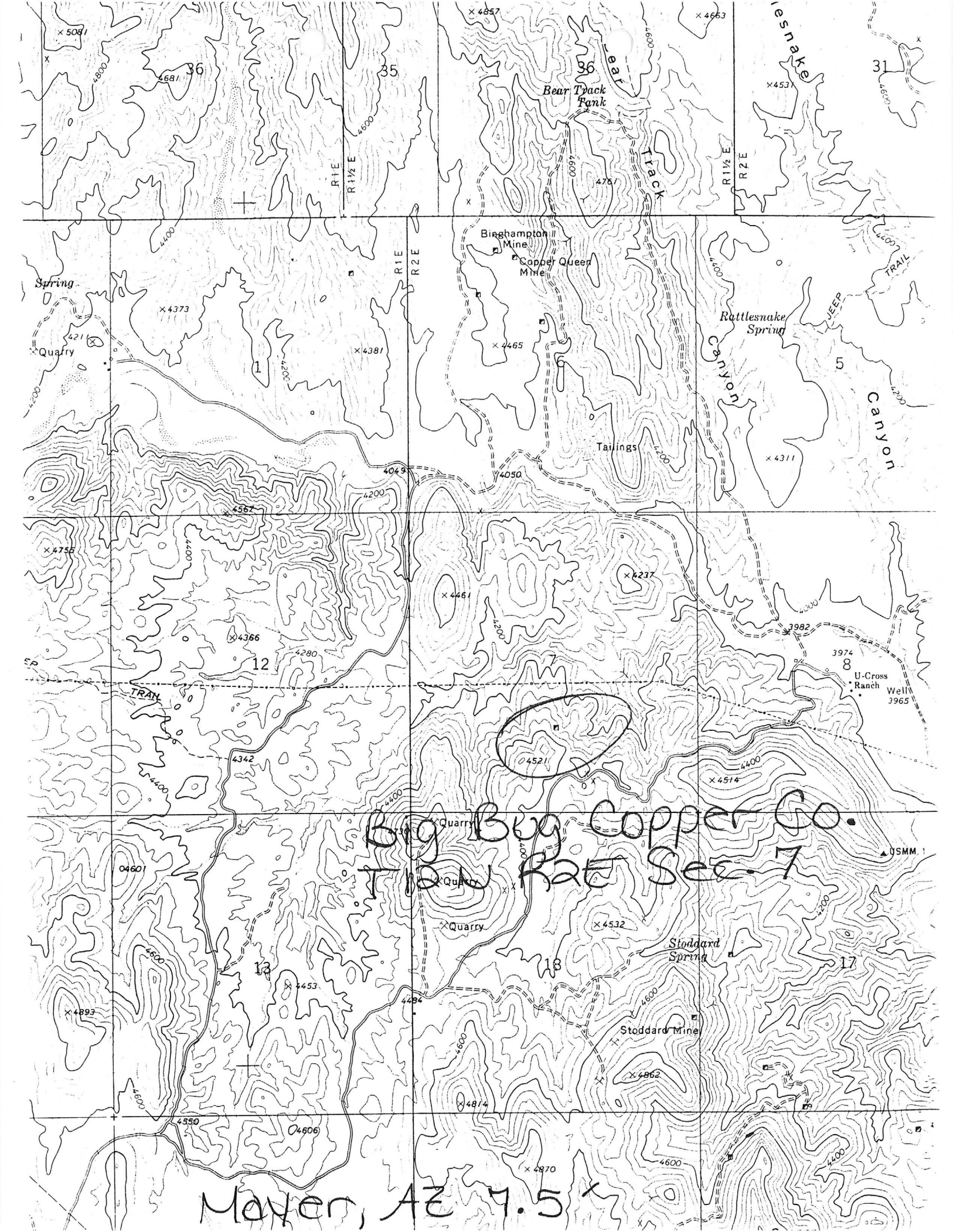
CURRENT STATUS: EXP PROSPECT

COMMODITY:

COPPER  
GOLD  
SILVER

BIBLIOGRAPHY:

USGS MAYER QUAD  
ADMMR BIG BUG COPPER FILE  
YAVAPAI MAGAZINE MAR. 1918 P 5 SHARLOT HALL  
MUSEUM PRESCOTT, AZ  
AA. MGN. JRNL. APR. 1919 P 82  
WEED, W.H. THE MINES HANDBOOK VOL XIV 1920  
P 340



Big Bug Copper Co.  
T12N R2E Sec. 7

4521

Mayen, AZ 7.5

x 5081

4681

35

x 4857

x 4663

x 4537

31

Bear Track Park

BEAR TRACK

Rattlesnake

Spring

x 4373

Quarry

x 4381

Binghamton Mine

Copper Queen Mine

x 4465

Rattlesnake Spring

5

Tailings

x 4311

x 4756

x 4366

x 4461

x 4237

12

4049

4050

3982

3974

U-Cross Ranch Well 3965

04601

Quarry

Quarry

Quarry

x 4532

Stoddard Spring

17

x 4893

x 4453

Stoddard Mine

x 4862

4350

04606

x 4814

x 4870

4400

R1E

R1½E

R1E

R2E

R1½E

R2E

4800

4400

4200

4200

4200

4200

4400

4200

4600

4400

4600

4600

4400

4400

0097

TRAIL

JEEP

CANYON

TRAIL

USMM 1

BIG BUG COPPER CO

REFERENCES

YAVAPAI COUNTY  
AGUA FRIA DIST.  
T12N R2E Sec. 7

Yavapai County MILS Index #1012B

AKA: Black Hills

Yavapai Magazine March 1918, p. 5

AZ Mining Journal, April 1919, p. 82

The Mines Handbook Vol. XIV 1920, p. 340

Mayer, AZ 7.5' Topo (included in file)



NAME OF MINE: BIG BUG ✓

COUNTY:  
DISTRICT: YAVAPAI  
METALS: CU

OPERATOR AND ADDRESS:

MINE STATUS

DATE:		DATE:	
5/1/44	Pierre Perry, Box 182, Mayer, Arizona ✓	5/1/44	Pending activity
		2/45	Developing
		10/45	Idle

\* GENERAL REFERENCES

REFERENCE 1 F1 < USGS Bull 782, p. 15 >  
 REFERENCE 2 F2 < ABGWT - USBM FILE DATA >  
 REFERENCE 3 F3 < USGS Bull 1336, PLATE 2 >  
 REFERENCE 4 F4 < USBM MINE MAP REPOSITORY REEL 4045-17 >

U.S. CRIB-SITE FORM

RECORD IDENTIFICATION

RECORD NUMBER B10 < >  
 REPORT DATE G1 < 8, 1, 0, 9 >  
 YR. MO.  
 RECORD TYPE B20 < X, I, M >  
 INFORMATION SOURCE B30 < 1, 2 >  
 DEPOSIT NUMBER B40 < >  
 FILE LINK IDENT. B50 < USBM 004 025 0193 >  
 REPORTER(SUPERVISOR) G2 < DEWITT, ED, H >  
 (last, first, middle initial)  
 REPORTER AFFILIATION G5 < ABGWT > SITE NAME A10 < BIG SUG MINE >  
 SYNONYMS A11 < BURZOG, OLD MINER >

LOCATION

MINING DISTRICT/AREA A30 < AGUA FRIA DISTRICT >  
 COUNTY A60 < YAVAPAI > STATE A50 < AZ > COUNTRY A40 < U, S >  
 PHYSIOGRAPHIC PROV A63 < 1, 2, 1 >  
 DRAINAGE AREA A62 < 1, 5, 0, 7, 0, 1, 0, 2, 1 >  
 QUADRANGLE NAME A90 < MAVER, (1, 1, 9, 7, 4, ) >  
 SECOND QUAD NAME A92 < (, , , , , ) >  
 ELEVATION A107 < 4, 5, 4, 0, 1, F, T >  
 LAND STATUS A64 < 0, 0, 1, 1, 1, 1 >  
 QUADRANGLE SCALE A100 < 24, 0, 0, 0 >  
 SECOND QUAD SCALE A91 < >

UTM NORTHING A120 < 3, 8, 0, 8, 7, 7, 0 >  
 EASTING A130 < 3, 8, 9, 7, 4, 0 >  
 ZONE NUMBER A110 < 1, 1, 2 >  
 ACCURACY ACCURATE  (circle) ESTIMATED EST < >  
 GEODETIC LATITUDE A70 < - - - - - N >  
 LONGITUDE A80 < - - - - - W >

CADASTRAL TOWNSHIP(S) A77 < 0, 1, 2, N, 1, 1, 1, 1, 1, 1, 1, 1, 1, 1, 1, 1, 1, 1, 1, 1, 1, 1 >  
 SECTION(S) A79 < 17 >  
 SECTION FRACTION(S) A76 < SW OF SW >  
 MERIDIAN(S) A81 < GILA AND SALT RIVER >  
 RANGE(S) A78 < 0, 0, 2, E, 1, 1, 1, 1, 1, 1, 1, 1, 1, 1, 1, 1, 1, 1, 1, 1 >

POSITION FROM NEAREST PROMINENT LOCALITY A82 < 4.1 MILES NORTHEAST OF MAVER, ARIZONA >  
 LOCATION COMMENTS A83 < 0.3 MILES SOUTHEAST OF STODDARD MINE >

ESSENTIAL INFORMATION  
 ESSENTIAL SOMETIMES OR HIGHLY RECOMMENDED



R E P O R T  
B I G B U G C O P P E R  
C O M P A N Y

LOCATION.

The Big Bug Copper company's claims are located in the well known Copper Mountain mining district, about five miles northeast of Mayer, in Yavapai county, Arizona. The property consists of seven full claims, or about 140 acres.

ACCESSIBILITY.

The property can be reached in a short drive by auto from Mayer, which is the nearest freight station on the Crown King branch of the Santa Fe railway system. Freight can be brought to the mine by auto truck at small expense and ore shipments can be made to the station by the same method of hauling. The large smelter of the Consolidated Arizona Smelting company is only nine miles distant at Humboldt, where practically all of the copper ore of the mines of the district, is shipped.

HISTORY OF THE MINE AND DISTRICT.

Copper Mountain is, itself, a prominent landmark of this district. The first mining of the section was done on the north end of the mountain by Isaac Stoddard about thirty-five years ago at which time a small smelter was built by him on the Agua Fria river a short distance from his mine. The development of the property opened a considerable amount of high grade and milling grade of copper ore. A number of reputable mining engineers have carefully examined the formation of this copper mountain and excellent reports by them as to its ore possibilities have been made.

The Big Bug company's holdings adjoin the original Stoddard mine on the north and east. An extension of the ore vein system in the Big Bug would carry it into the Arizona Binghamton and the Copper Queen mines, which lie to the north about one and one-half miles. Both of these mines are steady producers of an excellent grade of milling ore. Each of the mines has an oil flotation mill in operation on the property this process being especially well adapted to the treatment of the class of sulphide ores found in this district.

Without any question, this Copper Mountain district is loca-

copper and this is the average that I would place on the ore body from the surface to the present depth of the shaft. This average is about the same as that of the other copper mines of this immediate district such as the Arizona Binghamton and the Blue Bell.

At the bottom of the shaft, crosscuts have been run east and west and while no great discoveries of ore have been made in this work, I consider the showings of ore of particular value in the determination of the future work on the property.

I would call particular attention to the slip in the formation that is found in the east crosscut where the formation is an altered silicified schist. It is here that the ore seems to be both primary and secondary in formation. An excellent indication of a larger body of ore at this point is the softening of the formation which would make it possible for the easy deposition of the values.

Southwest of the shaft, the surface shows a strong jasperoid dike cutting through the porphyry and this undoubtedly had a lot to do with the deposition of valuable ore bodies at this point.

#### CLIMATE.

The climate is such that work can be carried on throughout the entire year. The elevation is about 4,400 feet above sea level.

#### POWER.

The Arizona Power company's main power line passes within a few hundred feet of the shaft. This power is cheap and is used by practically all of the mines of the district.

#### LABOR.

Due to the nearness of a good live town and the excellent climate, there is never any difficulty in getting plenty of good mine labor.

#### RECOMMENDATIONS.

There is but one thing necessary in the development of the copper properties in this schist belt to make them commercially profitable and that is depth and development. My recommendations would be that the present shaft be sunk to the 500-foot level before cutting another station and at that point a thorough system of drifting and crosscutting be carried out. It is my belief that at this depth, the ore body that is making on the 225-foot level at the

ted on the "Jerome to Phoenix" copper bearing schist belt, the large copper mines at Jerome being but 18 miles north and the Blue Bell, DeSoto and Kay mines being to the south.

That the ore bearing formation in this district has depth has been well proven by the deep workings at the Arizona Binghampton and Copper Queen mines on the north and the Blue Bell and Kay properties on the south. In the Arizona Binghampton, a 3-compartment shaft has recently passed the 950-foot level where a crosscut found one of the several ore bodies in place and much wider and of higher grade than on the upper levels. On the 1,200-foot level of the Blue Bell mine, the best grade of ore was found and the ore lenses were larger than on the upper levels. It has been estimated by various well known mining engineers that the possible depth of the ore deposition of this schist belt is from 5,000 to 7,000 feet.

#### GEOLOGY.

My observations of this particular district around Copper mountain are that the formation is very favorable for the deposition of mineral. The enclosing rock is the Yavapai schist which is the formation that extends north to the Jerome copper district and south to the Kay copper mine and to New River. Strong porphyry-diorite dikes have intruded the schist formation which are highly mineralized with iron and in many places, outcrops of copper carbonate and copper glance appear which are but indications of commercial deposits of copper ore that are to be found with depth as has been proven in the mine development of this district.

#### MINE DEVELOPMENT.

There are numerous shallow shafts and pits along the strike of the ore system of this property. The main workings are confined to the shaft at the south end of the property which has reached a vertical depth of 225 feet. The hoist equipment is complete and has a capacity for sinking 800 to 1,000 feet.

The shaft has been in a commercial grade of copper ore from the surface to the present depth. Places in the shaft have encountered quite remarkable high grade ore. I have carefully sampled the dump at the shaft which should give a general average of the ore as found in the workings and my average was about 3 per cent



point where the formation has become softer will be found to have developed into a large and commercial body of copper ore. It is dipping toward the shaft and should be encountered in the shaft at about the 500-foot level.

I would also expect to find a valuable ore deposit at the intersection of the jasperoid dike on the 500-foot level. This can be determined by a drift run a short distance from the shaft on that level.

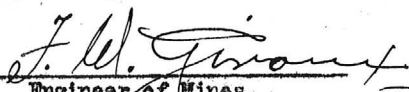
To the north, the condition that exists on the surface leads me to believe that development in that direction should not be slighted. The surface shows copper for a distance of about 2,000 feet on the Big Bug ground and for a width of 1,200 to 1,500 feet and of particular interest, there is a phase of the schist that is especially promising, for it is in the character of "blue" schist that the best grade of copper ore has been found in this district.

The schist on this property is of a highly altered character and is identical with the schist found in one of the most noted copper camps of Arizona where are situated two of the most celebrated mines of the world.

I consider the future development of this property not speculative to any great degree. The producing mines around it did not, as a rule, have so good surface outcrops of copper ore as it has. The shaft has and is still in commercial ore and all of the lower workings at the present depth, are in ore.

I consider the chance of developing another large copper producer in this property, excellent. It depends, in my opinion, upon the management almost entirely.

Respectfully submitted,

  
Engineer of Mines

Management claims to have spent \$60,000 in development work, driving tunnels, 1,000' and 2,000' long respectively, and to have 10,000 tons of \$8 ore on the dump besides 500,000 tons in sight and blocked out above tunnels and between two winzes sunk below the tunnel level.

**Equipment:** engine, compressor and drills.  
Reported idle 1918-19.

**BEEMER CONSOLIDATED GOLD & COPPER CO. ARIZONA**

Owens the Stormcloud Mine at Mt. Union, 12 miles S. of Prescott, Yavapai county, Ariz. Idle.

**BELCHER MINE ARIZONA**

Formerly part of the Belcher Mining Co., but bought at tax sale by George Demain, Prescott, Ariz.

**Property:** 5 claims including the Belcher, Mammoth and the Eugene in the Big Bug district, 13 miles south of Prescott. Vein carries gold and silver, reported to average \$5.90 per ton.

Said to be under option to John R. McEwen and E. C. Evans representing Phoenix parties, for \$100,000.

**BELCHER MINING CO. ARIZONA**

Defunct and assets reported sold for taxes. Fully described, Vol. XII. See Belcher Mine and Red Rock Mine.

**BIG BLUE MINING CO. ARIZONA**

Mail returned unclaimed, March, 1919, from Constellation, Arizona.

**Inc.** 1911, in Arizona. **Cap.**, \$1,000,000; \$1 par. Col. E. F. Brown, owner; J. A. Caskey, supt.

**Property:** the Big Blue and Copper Prince mines on the Hassayampa river, 14 miles from Wickenburg, Yavapai county, showing fissure veins in schist, that yield high-grade silver-gold-copper ore.

**Development:** by 2 shafts, connected on 200' level, drifts, crosscut and tunnels.

**Equipment:** includes crusher, pump, gasoline engine, hoisting plant and a concentration mill. Probably idle.

**BIG BUG COPPER CO. ARIZONA**

**Office:** Mayer, Ariz.

**Officers:** Frank Thornton pres. gen. mgr.; Carl Raab, v. p.; A. E. Rice, sec.-treas.; Uri Embody, asst. sec.-treas.; with Marshall Stoddard, directors.

**Property:** 6 claims, 5 miles east of Mayer, Yavapai county; 21 claims adjoining the Blue Bell, 2 near the smelter at Mayer, and 2 on Copper mountain.

**Development:** work on the Copper mountain property consists of shaft now 100' deep, reported in ore assaying from 15 to 45% copper. Ore is a sericite schist containing lime spar shot through with chalcopryrite and black oxide of copper. A 30' shaft, 1,000' away, is stated to show the same ore with more glance and gray copper. Machinery was erected in Aug., 1919. Property attracting attention and is regarded by competent engineers as promising.

**BIG BUTTE COPPER CO. ARIZONA**

**Address:** H. E. Shumate, sec., Prescott, Ariz.

**Officers:** Geo. L. Reed, pres.; Ed. Shumate, v. p.; Geo. C. Ruffner, treas. **Inc.** April, 1917, in Montana. **Cap.**, \$1,500,000; \$1 par.

**Property:** 43 claims in Copper Basin district, 12 miles from Prescott, developed by tunnel, shafts and open cuts, from which some copper and silver ore has been shipped. Reported driving tunnel to cut vein at point below rich outcrop.

**BIG COPPER CHIEF CO. ARIZONA**

**Address:** care Thomas Boyd, pres., Mound City, Ill.; S. E. Jordan, sec.-treas., Phoenix, Ariz.; R. E. Grace, v. p. **Mine address:** Canyon, via Bumblebee, Ariz.

**Property:** the Jasper N. Nellis groups, 1½ m. S. W. of Bumblebee, Yavapai county, shows schist mineralized by copper glance, etc., in a zone 300' wide.

Developed by 50' shaft, 250' tunnel and many pits.

**BIG DOME MINES**

**Owner:** C. Benjamin Hay

**Property:** 4 patented claims in Walker district, Yavapai county, schist, with gold in a 10-inch streak. Development by 3 h. p. gasoline hoist made by Expended \$1,800 in 1918;

**BIG LEDGE COPPER CO.**

**Office:** 512 Sellwood Bldg. **Mines** at Big Bug (H) Yavapai county, Ariz.

**Officers and directors:** M. J. Percival, mng. director; J. A. Percival, Titus, J. B. Cotton, directors.

Company is the successor

**Inc.** in Arizona, Jan. 20, 1919

paid and non-assessable; increased, Dec., 31, 1918, 2,865,587 shares

development company was converted, the name being changed to Big Ledge

shares increased to \$5, the new change made share for share; the Tredwell or Great Western

In June, 1918, new interests, k control.

The annual report states that the

ternut mines have been made; only \$13,500 remains unpaid. \$102,278, a sum sufficient to cover

**Property:** consists of 3 g 1,900 acres. The Black Hills g

4 miles east of Humboldt, Ariz. and 22 unpatented claims; the

7 unpatented claims. In July, purchased for \$30,000. They a

There is a spur of the railway aerial tram, costing \$12,000 w

nut ore to the railroad, but w

This property shows a fine hornblende schists near a diorite

whose ore contains copper-pyrite. The claims cover 4,000' along t

along a split or intersecting vein age width of 2' of ore reported

**Development:** comprises Henrietta, or lower tunnel.

sunk 650' below the tunnel floor double-drum electric hoist go

shaft is to be sunk to 850' Th and 650' below the tunnel.

Still farther west and over and recently reopened, compr

300' depth and by No. 2 shaft tunnel 327' above the Henrietta

below the main tunnel, the Henrietta This will eventually be connect

An interesting vein, the l

S. F. P. & P. RY

## MINES IN THE MAYER DISTRICT

- |  |                                  |                               |
|--|----------------------------------|-------------------------------|
| 1. Consolidated Arizona Smelting Co. Smelter | 11. Locey-Pabst (Union)          | 22. Half Moon Smelter.        |
| 2. Silver Belt                               | 12. Mudhole                      | 23. Rio Tonto                 |
| 3. Arizona National                          | 13. Boggs                        | 24. Copper Mountain Mines Co. |
| 4. Loma Verde                                | 14. Arizona Copper Mining Co.    | 25. Copper Age                |
| 5. Swindler                                  | 15. Hackberry                    | 26. Big Bug                   |
| 6. Butternut                                 | 16. Big Reef                     | 27. Jerome Copper             |
| 7. Henrietta                                 | 17. Moscow                       | 28. Miner                     |
| 8. Gladstone-McCabe                          | 18. Arizona Binghamton           | 29. Monte de Cobra (Barbara)  |
| 9. Little Jessie                             | 19. Copper Queen Gold Mining Co. | 30. Great Western Smelter     |
| 10. Lelan                                    | 20. Arizona Copper Hill          | 31. Little Egypt              |
|  |                                  | 32. May Ore Purchasing Co.    |
|  |                                  | 33. Easy Boss                 |
|  |                                  | 34. Pocahontas                |
|  |                                  | 35. Iowa                      |
|  |                                  | 36. May                       |
|  |                                  | 37. Blue Bell                 |
|  |                                  | 38. Cinderella                |
|  |                                  | 39. Circle Park               |
|  |                                  | 40. De Soto                   |
|  |                                  | 41. Amulet                    |
|  |                                  | 42. Iron Queen                |

Queen which adjoins the on is one of the producing he Mayer district. A total et of development work has on the property during the —development work con— sinking, drifting, raising utting. The shaft is down At the beginning of the s reserves totaled 20,000 tons. 17, 18,239 tons were de— ad 4,627 tons were deliv— e mill, leaving 33,612 tons on January 1st, 1918.

to—This property adjoins Queen on the south. Little at work has been done on ty outside of a shaft down There is no equipment on ty. The showings encount— limited workings are good anagement expects to have a active properties in the the near future.

Mountain Mines Co.—This any years ago was opened e Stoddard, the pioneer of ountain. Isaac Stoddard first smelter in Arizona obe. Some remains of this stand on the banks of the about one and a half miles e mine. Recently Celora as undertaken to revive ty. Work of unwatering ering the shaft has just ed by Chaney, mine sup— of the Binghamton. The en unwatered to the 160 but this it not the bottom From the 160 level the ques down to an unknown e Incline. Just how deep and what drifting has e unknown as no records ings were kept by Isaac The management is now s from contractors pre— nking the shaft another

re—This property in— claims which formerly s Philippine group. In

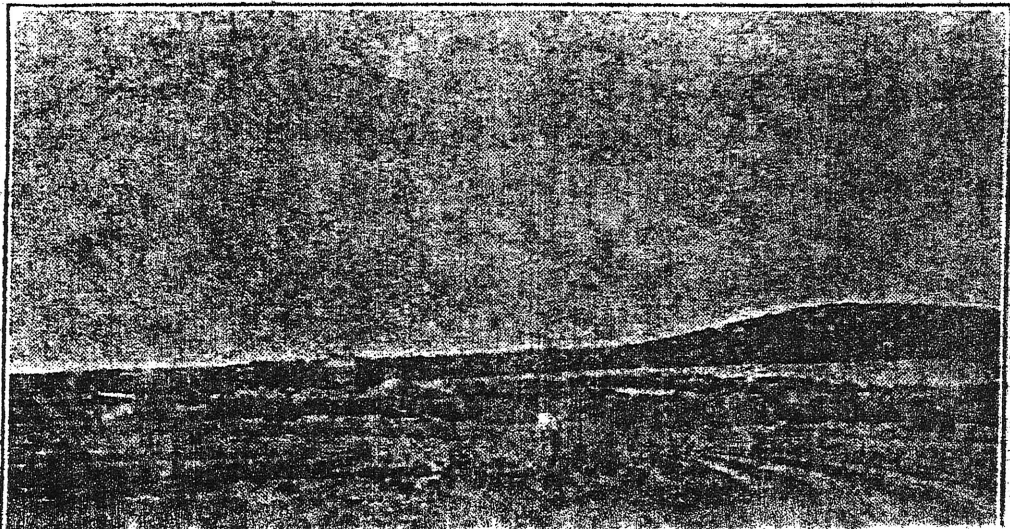
to define walls and a drift is also being driven in under the shaft that has produced some high grade copper ore several years ago. The property will be completely equipped with machinery and a camp will be built.

Big Bug—This property is situated on Copper Mountain. At present two men are working in order to determine a suitable location for a shaft. There is an old shaft down 35 feet. In addition to this there are several other small cuts on the property. Two tunnels have also been started. From these shallow workings, good showing of ore have been encountered. It is planned to develop the property extensively and permanently. The property consists of seven

claims. The southern neighbor of the Big Bug is the Copper Mountain Mines Company.

Jerome Copper—The holdings of the Jerome Copper Company are situated at Copper mountain. Little development work has been done on the property to date, but showings encountered on the surface are good enough in the company's estimation to warrant extensive development work. It is expected that work will begin in the near future.

Barbara—This property was recently taken over by the Monte de Cobra people. The property consists of eight claims located three miles east of Mayer on Copper Mountain. Development work done to date in-



cludes a 340 foot tunnel, three shaft the deepest being 70 feet, and a number of cuts. About 40 feet of and three-eighths copper was cut the tunnel. At present work is suspended and funds are being raised. When the company is financed, a shaft will be sunk 300 feet at the south end of the property. New equipment will be purchased and complete, up-to-date camp will be built.

Great Western Smelter—The smelter has been closed down for about months. The date of re-opening indefinite at present, but it is probable that the smelter will re-open until a sufficient quantity of ore has been blocked out in the Henrietta and Butternut properties to feed the plant indefinitely. At present the capacity of the smelter is 200 tons daily. Sometime before the plant shut down a new stack was built which would give the plant a capacity of 500 tons additional. This unit, however, has not been completed.

Little Egypt—This property consists of six claims of 120 acres. There is a 100 foot shaft and two crosscuts 80 and 100 feet respectively on the property. The ore encountered in these workings according to the management averages from 3 to 23 percent copper. Other values encountered are gold and silver. At present no active work is being done. The property lies about a mile southeast of Mayer.



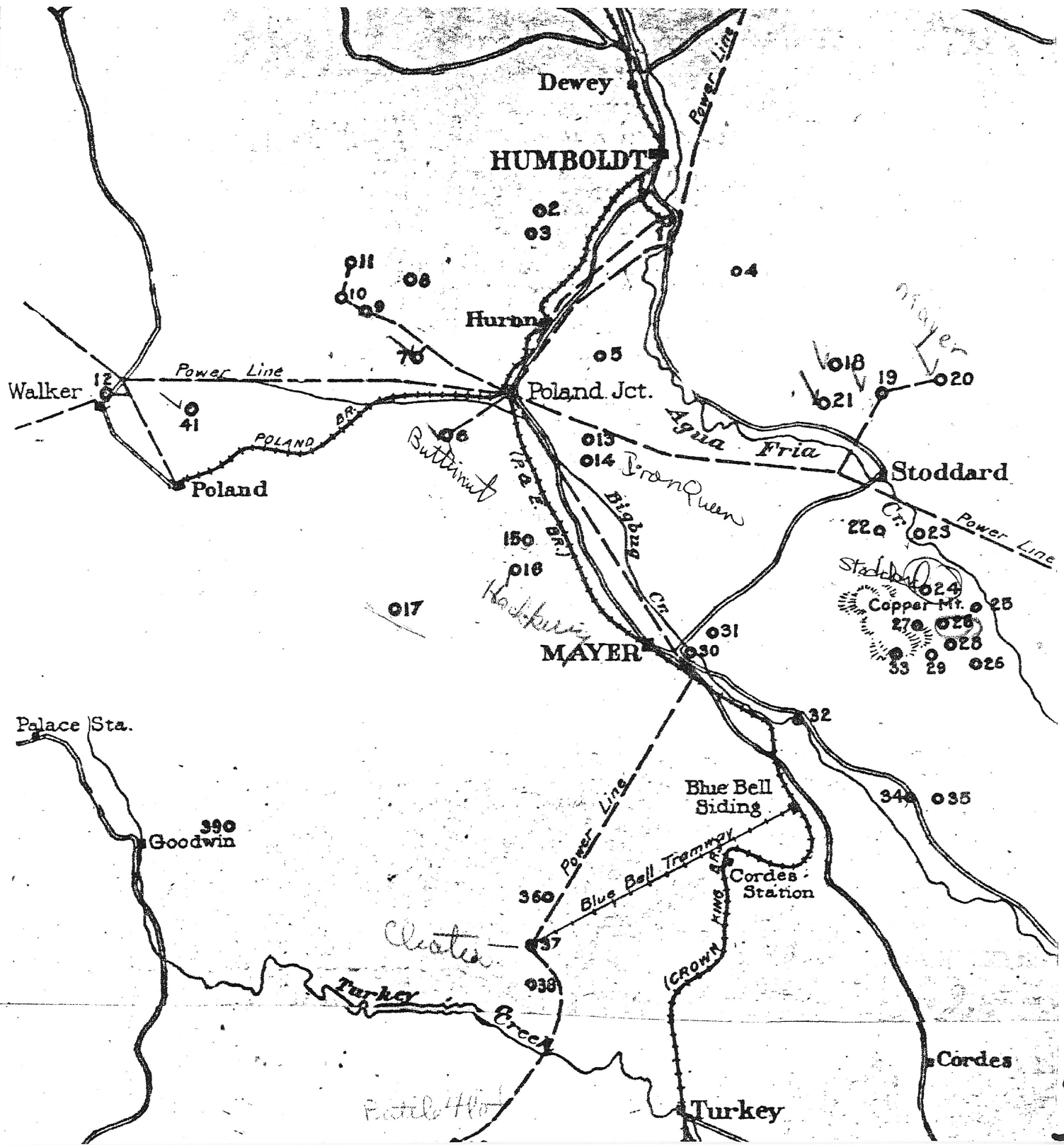
... north of Mayer. This has since been abandoned and removed. The principal of the Boggs and Hackberry and copper. Recently the Boggs people have shown interest in reviving these properties. The Boggs lies about a mile north of Poland Junction and the Mayer about two miles southwest of Poland Junction.

**Queen**—This property was developed about the same time as the Boggs and Hackberry. It also furnished the old smelter at Arizona. It is now closed down and has not been worked for a number of years. Eight years ago, however, both the Queen and the Boggs were again revived and some ore was shipped to the Treadwell Mining Company's smelter at Mayer.

**Copper**—On this property development work is being prosecuted actively. The property consists of several claims lying about three miles northwest of Mayer. The shaft is about 400 feet and good quantities of chalcopyrite ore are being entered. Three shifts are being worked and 20 men are employed. As soon as the property gets on a producing basis, an aerial tramway will be built from the mine to the road which is about three miles distant.

**Stoddard**—This property is south of the Arizona-Binghamton and Binghamton. Though the property is not producing at present, it has produced high grade copper. Development consists of a shaft down about 700 feet and a number of adits.

**Arizona**—This property is located about five miles east of Stoddard. The shaft is down about 700 feet and development work is being done every day. The property is equipped with machinery to carry on development indefinitely and the camp at the mine is at present being developed at the company's flotation plant. About 200 tons are now being shipped daily. Approximately 30 tons of concentrates averaging 23 1/2% copper are being shipped daily.



City which is located about five miles north of Mayer. This has since been abandoned and removed. The principal of the Boggs and Hackberry and copper. Recently the lodge people have shown interest in reviving these properties. The Boggs lies about a mile east of Poland Junction and the other about two miles southwest of Poland Junction.

**Queen**—This property was developed about the same time as the other in the Hackberry. It also furnished for the old smelter at Arizona. It is now closed down and has not been worked for a number of years. Eight years ago, however, both the Queen and the Boggs were fully revived and some ore was shipped to the Treadwell Mining Company smelter at Mayer.

**Copper**—On this property the present work is being prosecuted actively. The property consists of claims lying about three miles west of Mayer. The shaft is about 400 feet and good quantities of chalcopryite ore are encountered. Three shifts are working and 20 men are employed. As soon as the property gets on a producing basis, an aerial tramway will be built from the mine to the road which is about three miles distant.

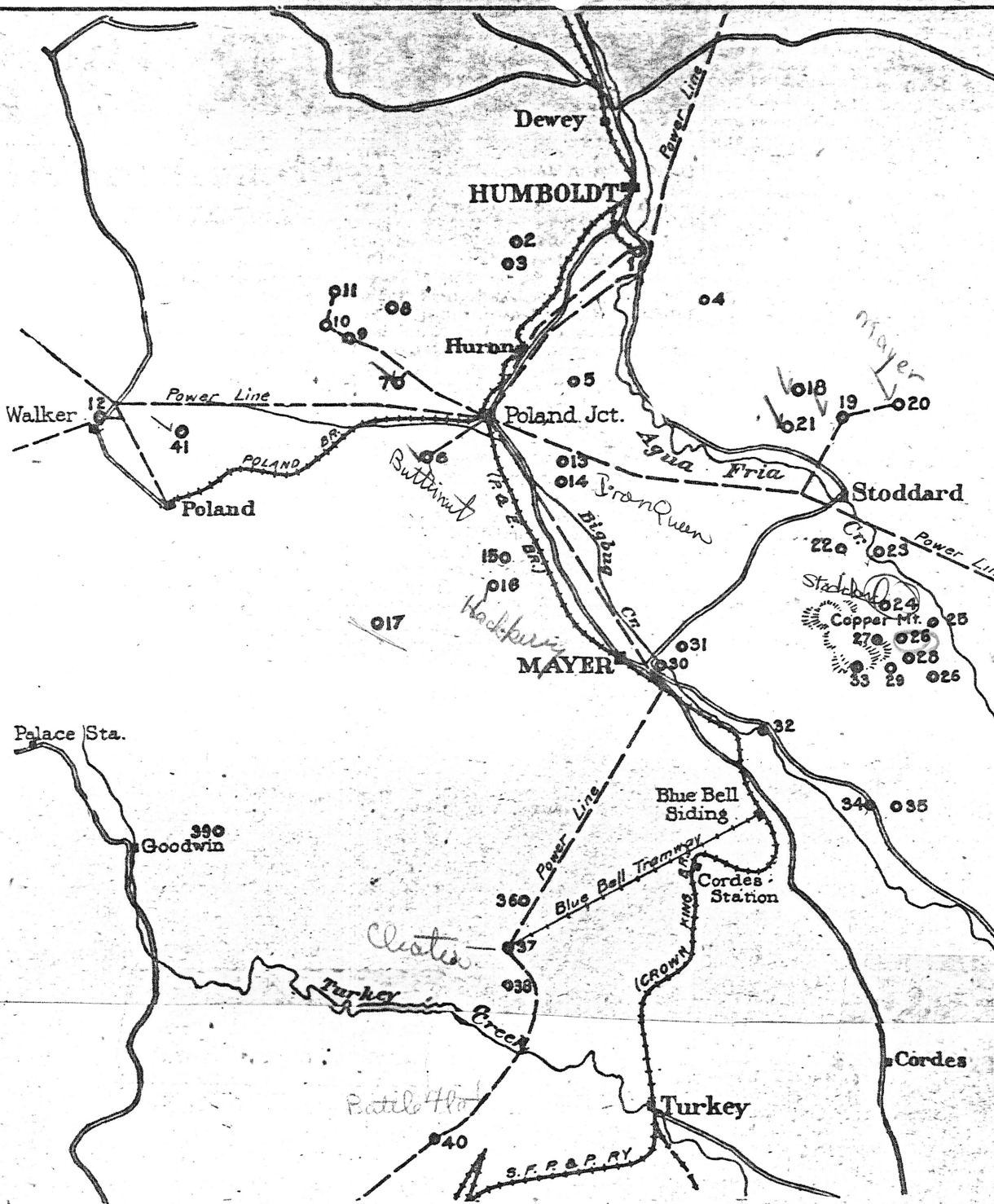
**Arizona**—This property is south of the Arizona-Binghamton and Stoddard. Though the property is not at present, it has produced high grade copper. Development consists of a shaft down to a tunnel and a number of workings.

**Stoddard**—This property is located about five miles east of Stoddard. The shaft is down about 700 feet of development work are being done every day. The property is equipped with machinery to carry on development indefinitely and the camp is fast assuming the proportions of a thriving town. All ore at the mine is at present being shipped to the company's flotation plant. About 200 tons are now being shipped daily. Approximately 30 tons of concentrates averaging 23 1/2 percent copper are being shipped daily to the smelter at Humboldt.

**Queen** which adjoins the other on the south. Little work has been done on this property outside of a shaft down to a tunnel. There is no equipment on the property. The showings encountered in the workings are good and management expects to have active properties in the near future.

**Mountain Mines Co.**—This company years ago was opened by Isaac Stoddard, the pioneer of the first smelter in Arizona. Some remains of this stand on the banks of the river about one and a half miles from the mine. Recently Celora has undertaken to revive the property. Work of unwatering the shaft has just been completed by Chaney, mine superintendent of the Binghamton. The shaft has been unwatered to the 160 level but this is not the bottom of the shaft. From the 160 level the shaft goes down to an unknown level. Just how deep the shaft is and what drifting has been encountered is unknown as no records were kept by Isaac Stoddard. The management is now negotiating with contractors preparing to sink the shaft another

**Philippine**—This property includes claims which formerly were owned by a Philippine group. In



**MINES IN THE MAYER DISTRICT**

- |  |                                  |                               |
|--|----------------------------------|-------------------------------|
| 1. Consolidated Arizona Smelting Co. Smelter | 11. Locey-Pabst (Union)          | 22. Half Moon Smelter.        |
| 2. Silver Belt                               | 12. Mudhole                      | 23. Rio Tonto                 |
| 3. Arizona National                          | 13. Boggs                        | 24. Copper Mountain Mines Co. |
| 4. Loma Verde                                | 14. Hackberry                    | 25. Copper Age                |
| 5. Swindler                                  | 15. Arizona Copper Mining Co.    | 26. Big Bug                   |
| 6. Butternut-N                               | 16. Hackberry                    | 27. Jerome Copper             |
| 7. Henrietta                                 | 17. Big Reef N                   | 28. Miner                     |
| 8. Gladstone-McCabe                          | 18. Moscow                       | 29. Monte de Cobra (Barbara)  |
| 9. Little Jessie                             | 19. Arizona Binghamton           | 30. Great Western Smelter     |
| 10. Lelan                                    | 20. Copper Queen Gold Mining Co. | 31. Little Egypt              |
|  | 21. Arizona Copper Hill          | 32. May Ore Purchasing Co.    |
|  |                                  | 33. Easy Boss                 |
|  |                                  | 34. Pocahontas                |
|  |                                  | 35. Iowa                      |
|  |                                  | 36. May                       |
|  |                                  | 37. Blue Bell                 |
|  |                                  | 38. Cinderella                |
|  |                                  | 39. Circle Park               |
|  |                                  | 40. De Soto                   |
|  |                                  | 41. Amulet                    |
|  |                                  | 42. Iron Queen                |

to define walls and a drift is also being driven in under the shaft that has produced some high grade copper ore several years ago. The property will be completely equipped with machinery and a camp will be built.

**Big Bug**—This property is situated on Copper Mountain. At present two men are working in order to determine a suitable location for a shaft. There is an old shaft down 35 feet. In addition to this there are several other small cuts on the property. Two tunnels have also been started. From these shallow workings, good showing of ore have been encountered. It is planned to develop the property extensively and permanently. The property consists of seven

claims. The southern neighbor of the Big Bug is the Copper Mountain Mines Company.

**Jerome Copper**—The holdings of the Jerome Copper Company are situated at Copper Mountain. Little development work has been done on the property to date, but showings encountered on the surface are good enough in the company's estimation to warrant extensive development work. It is expected that work will begin in the near future.

**Barbara**—This property was recently taken over by the Monte de Cobra people. The property consists of eight claims located three miles east of Mayer on Copper Mountain. Development work done to date in-

cludes a 340 foot tunnel, three shafts, the deepest being 70 feet, and a number of cuts. About 40 feet of and three-eighths copper was cut in the tunnel. At present work is pending and funds are being raised. When the company is financed, a shaft will be sunk 300 feet at the south end of the property. The equipment will be purchased as complete, up-to-date camp will be built.

**Great Western Smelter**—The smelter has been closed down for about six months. The date of re-opening is indefinite at present, but it is probable that the smelter will re-open until a sufficient quantity of ore has been blocked out in the Henrietta Butternut properties to feed the plant indefinitely. At present the capacity of the smelter is 200 tons daily. Sometime before the plant shut down a new stack was built which would give the plant a capacity of 500 tons additional. This unit, however, has not been completed.

**Little Egypt**—This property consists of six claims of 120 acres. There is a 100 foot shaft and two crosscuts 80 and 100 feet respectively on the property. The ore encountered in these workings according to the management averages from 3 to 23 percent copper. Other values encountered are gold and silver. At present no active work is being done. The property lies about a mile south of Mayer.

