



CONTACT INFORMATION

Mining Records Curator
Arizona Geological Survey
1520 West Adams St.
Phoenix, AZ 85007
602-771-1601
<http://www.azgs.az.gov>
inquiries@azgs.az.gov

The following file is part of the

Arizona Department of Mines and Mineral Resources Mining Collection

ACCESS STATEMENT

These digitized collections are accessible for purposes of education and research. We have indicated what we know about copyright and rights of privacy, publicity, or trademark. Due to the nature of archival collections, we are not always able to identify this information. We are eager to hear from any rights owners, so that we may obtain accurate information. Upon request, we will remove material from public view while we address a rights issue.

CONSTRAINTS STATEMENT

The Arizona Geological Survey does not claim to control all rights for all materials in its collection. These rights include, but are not limited to: copyright, privacy rights, and cultural protection rights. The User hereby assumes all responsibility for obtaining any rights to use the material in excess of "fair use."

The Survey makes no intellectual property claims to the products created by individual authors in the manuscript collections, except when the author deeded those rights to the Survey or when those authors were employed by the State of Arizona and created intellectual products as a function of their official duties. The Survey does maintain property rights to the physical and digital representations of the works.

QUALITY STATEMENT

The Arizona Geological Survey is not responsible for the accuracy of the records, information, or opinions that may be contained in the files. The Survey collects, catalogs, and archives data on mineral properties regardless of its views of the veracity or accuracy of those data.

PRINTED: 03-04-2009

ARIZONA DEPARTMENT OF MINES AND MINERAL RESOURCES AZMILS DATA

PRIMARY NAME: BIG BUG PLACER

ALTERNATE NAMES:

PATENTED CLAIMS MS 1263
OLD JOE GROUP

YAVAPAI COUNTY MILS NUMBER: 1042A

LOCATION: TOWNSHIP 12 N RANGE 1 E SECTION 22 QUARTER S2
LATITUDE: N 34DEG 24MIN 05SEC LONGITUDE: W 112DEG 14MIN 45SEC
TOPO MAP NAME: MAYER - 7.5 MIN

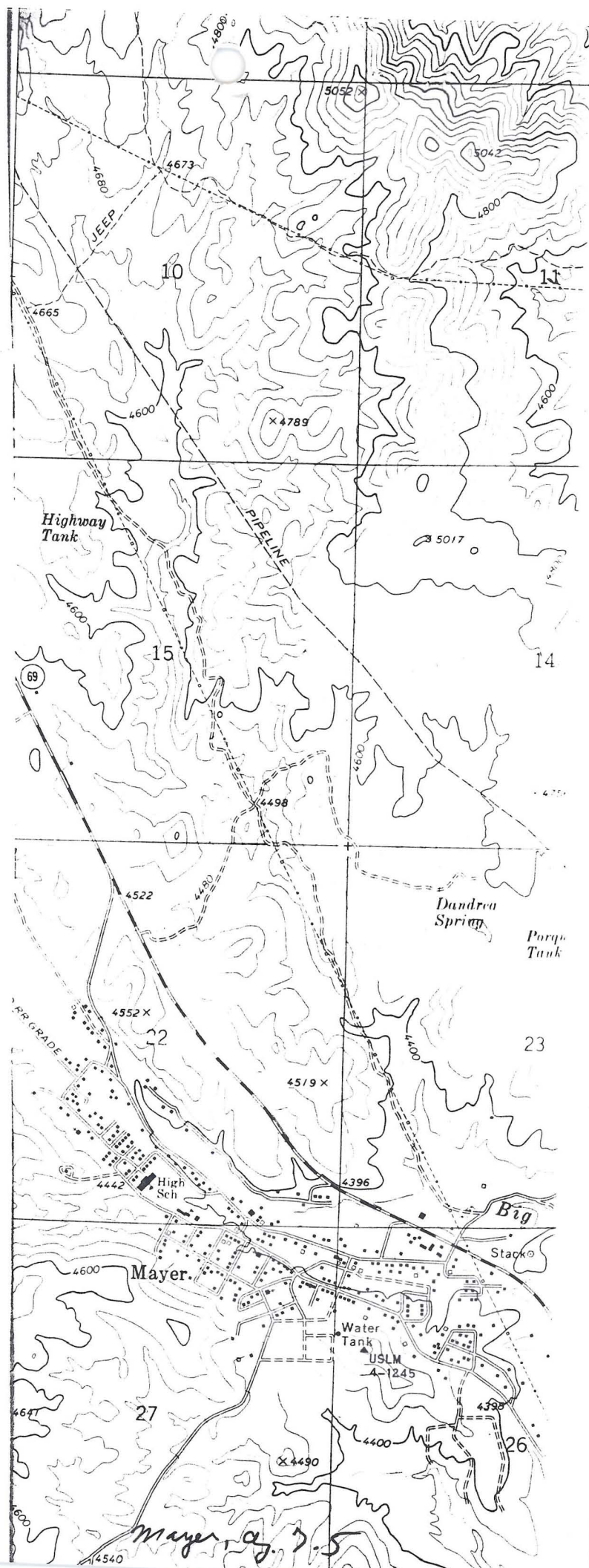
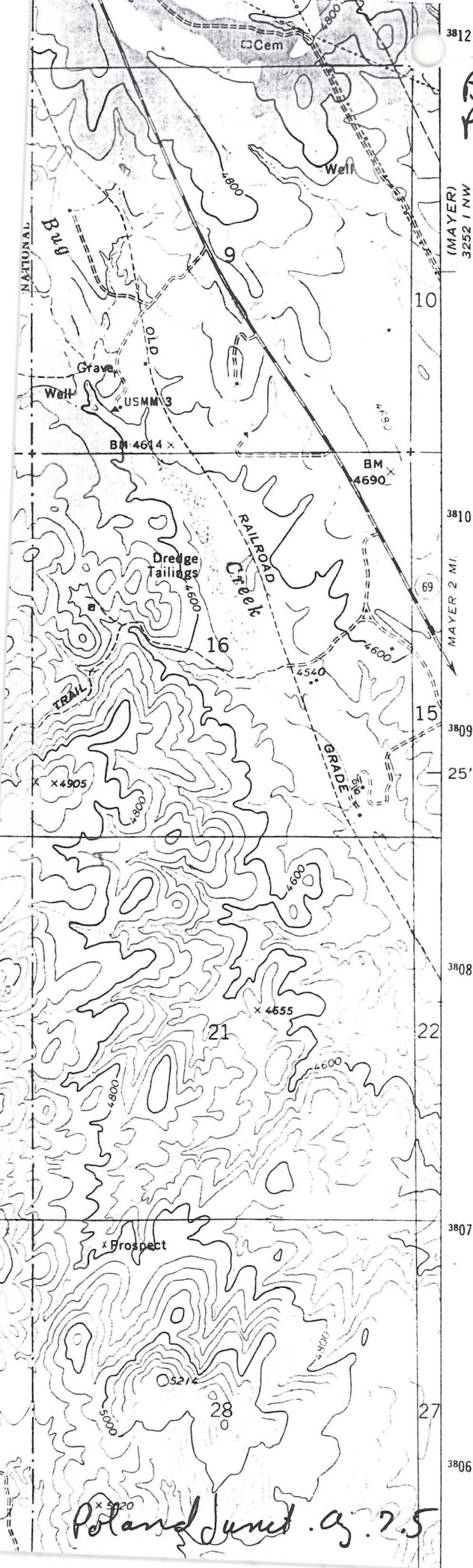
CURRENT STATUS: PAST PRODUCER

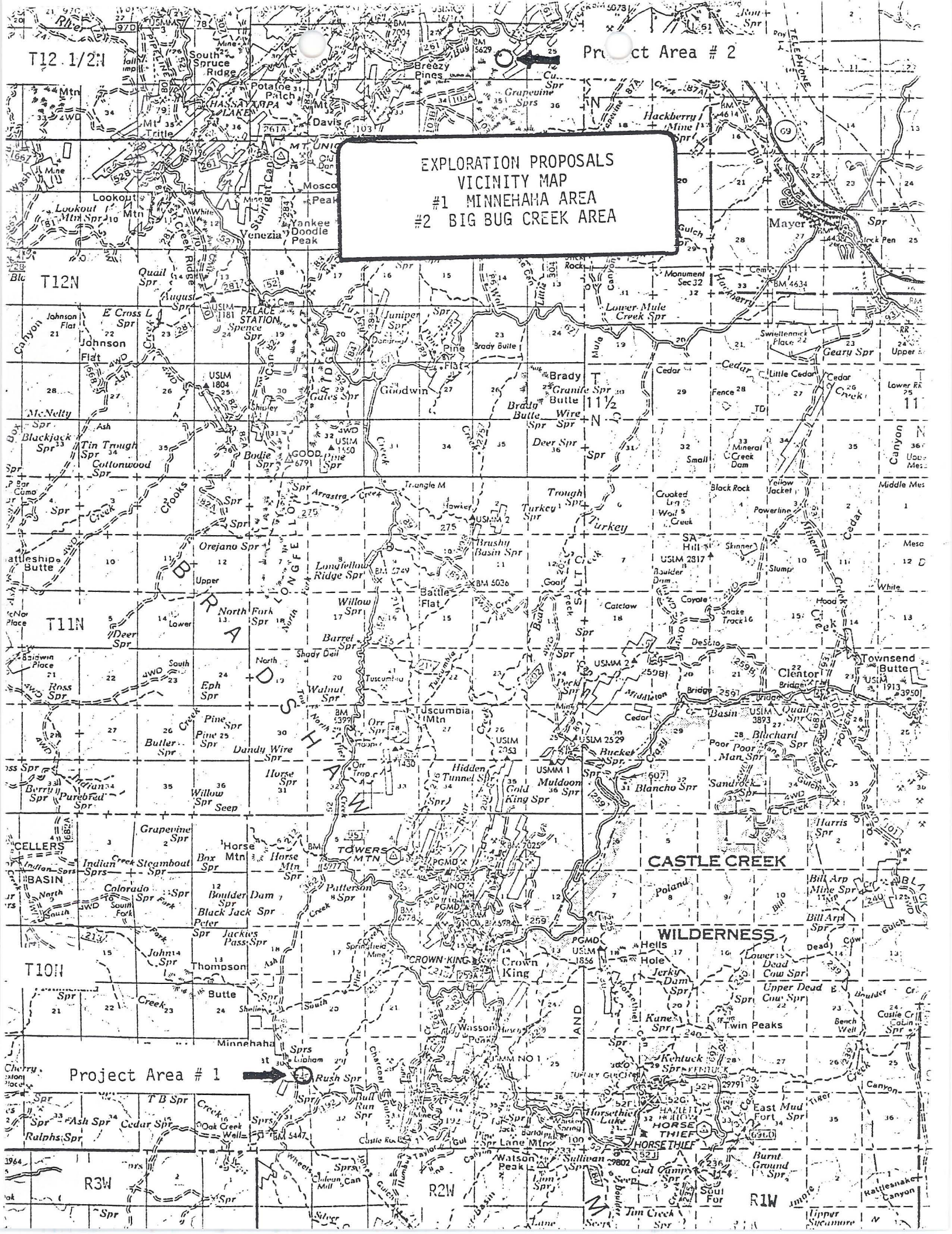
COMMODITY:

GOLD PLACER

BIBLIOGRAPHY:

BLM MINING DISTRICT SHEET 15
ADMMR BIG BUG PLACER FILE
ABM BULL 160, P 48





BIG BUG PLACER

YAVAPAI COUNTY

MG WR 4/26/85: Mayer Mining & Materials is no longer operating on the Overlook Placer in the Big Bug placer district (Yavapai County). Messrs. Steve Wilson & Doug Peckham, Overlook Mining Co., P O Box 552, Mayer, Az. 86333, are the current operators.

KAP WR 10/30/81: C. S. "Chuck" Barnes reported that the floating dredge on Big Bug Creek upstream from Mayer is idle until more water is available. He explained that the property is known as the Big Bug Placer Deposit. The claims are owned by Western Mines Associates of which Mr. Barnes is a principal. The production company is Big Bug Mines of which A. T. LaPradd is president, C. S. Barnes is involved with the operation of Western Exploration Inc., 1343 E. Winter Drive, Phoenix, Arizona 85020, phone 943-5363.

NJN WR 2/27/87: Bob Morris reported that he is working a bench placer at Big Bug Creek Placer Area (file) Yavapai Count at T12N R1E Sec 15 NW. The creek is locally known as Slaughter House Gulch and is near Mayer, Arizona. The material produced is processed in Fred Lorette's gravel pit located on Big Bug Creek north of Mayer. Mr. Morris showed me some estimated 90 fine, placer material up to $\frac{1}{4}$ " in size and reporting values ranging up to 50 cents per yard (\$400 Au).

BIG BUG PLACERS

11/84

(Based on USGS Bull. 1355, Plate 1, #57)

INCLUDED IN FILE:

Mayer Mining & Materials -
CHERRY CREEK GOLD CORP.

YAVAPAI COUNTY

T12N R1E Sec 18, 19, 22, 26

~~USGS~~

IN 22

REFERENCES

ABM Bull. 140, p. 103

ABM Bull. 160, p. 48

BUTTON MINNEHARA PLACERS (A) YAVAPAI

BIG BUG PLACERS (A) YAVAPAI

Reply To: 2810

Date: February 25, 1991

Circulate
[Signature]

Dear Concerned Citizen:

The Bradshaw Ranger District has received Plans of Operations for two exploration projects to be conducted on the Forest. The legal description for the first proposal is Sections 29 and 30, Township 10 North, Range 1 West. For the second proposal, Section 26, Township 12 1/2 North, Range 1 West. The general areas are shown on the attached map.

The first proposal calls for four sample trenches to be excavated for collecting samples. Reclamation would be ongoing; trenches will be backfilled with the excavated material following sampling. Sample material would be evaluated off site. Reclamation would also include spreading salvaged topsoil and revegetating the site. As part of the approval, the operator would be required to post a reclamation bond sufficient for rehabilitation of the site.

The second proposal involves similar trench sampling. Unlike proposal no. 1, where sampling is to take place on hillsides, this project involves sampling in a drainage bottom. Sample trenches are proposed for an area no larger than 50' x 100' in size. Sample material would be processed on site, using a portable placer washer. No chemicals will be used. Reclamation would be similar to that mentioned in the first proposal along with the required bonding for reclamation.

Initial concerns identified with the projects are protection of water quality. Minimizing impacts on vegetation and wildlife has also been identified as a concern. A cultural resource inventory will be completed prior to any disturbance.

If you have any additional concerns or comments, please provide them to me by March 25, 1991. A copy of the operating plan is available for review at this office. If you have questions, feel free to contact Steve Rinella or Bill Cotee at 602/445-7253.

Sincerely,

For *Fabiola E. HOLT*
JOHN W. HOLT
District Ranger

Enclosure



STATE MINE INSPECTOR

AUG 18 1984

Hamm



BIG BUG PUCKER (CLEAN FILE)

Office of State Mine Inspector

705 West Wing, Capitol Building
Phoenix, Arizona 85007
602-255-5971

NOTICE TO ARIZONA STATE MINE INSPECTOR

In compliance with Arizona Revised Statute Section 27-303*, we are submitting this written notice to the Arizona State Mine Inspector (705 West Wing, Capitol Building, Phoenix, Arizona 85007) of our intent to start/stop (please circle one) a mining operation.

COMPANY NAME Mayer Mining & Materials
CHIEF OFFICER John Sanders - Owner
COMPANY ADDRESS Box 421 Mayer AZ 86323
COMPANY TELEPHONE NUMBER 632 9361
MINE OR PLANT NAME Mayer Mining & Mat
MINE OR PLANT LOCATION (including county and nearest town, as well as directions for locating by vehicle)
ON Big Bug Creek 1 mi NORTH
OF Mayer AZ
TYPE OF OPERATION placer / Sand & Gravel PRINCIPAL PRODUCT Gravel pit & Gold
STARTING DATE 7-1-84 CLOSING DATE _____
DURATION OF OPERATION _____
PERSON SENDING THIS NOTICE JOHN SANDERS
TITLE OF PERSON SENDING THIS NOTICE OWNER
DATE NOTICE SENT TO STATE MINE INSPECTOR 8-8-84

*A.R.S. Section 27-303 NOTIFICATION TO INSPECTOR OF BEGINNING OR SUSPENDING OPERATIONS: When mining operations are commenced in any mine or when operations therein are permanently suspended, the operator shall give written notice to the inspector at his office prior to commencement or suspension of operations.

7
7 am

BIG BU PAK (F)

85436200

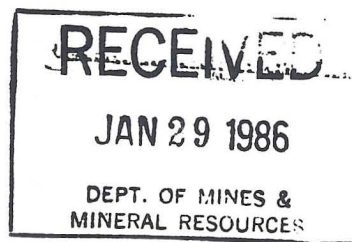


STATE MINE INSPECTOR

Office of State Mine Inspector

DEC 13 1985

705 West Wing, Capitol Building
Phoenix, Arizona 85007
602-255-5971



NOTICE TO ARIZONA STATE MINE INSPECTOR

In compliance with Arizona Revised Statute Section 27-303*, we are submitting this written notice to the Arizona State Mine Inspector (705 West Wing, Capitol Building, Phoenix, Arizona 85007) of our intent to start/stop (please circle one) a mining operation.

COMPANY NAME NEAL S. WHITE (X)

CHIEF OFFICER "SAME"

COMPANY ADDRESS P.O. BOX 1411 COTTON WOOD, AZ. 86326

COMPANY TELEPHONE NUMBER 646-6146

(MINE) OR PLANT NAME DOWN STREAM NOS. 1 AND 2X

MINE OR PLANT LOCATION (including county and nearest town, as well as directions for locating by vehicle)

1 MILE NORTH OF SPRING VALLEY, AZ HWY #69
ON WEST SIDE OF HIGHWAY IN BOTTOM OF BIG
BIG CREEK - "CAN BE SEEN FROM HIGHWAY #69"

TYPE OF OPERATION "SAMPLING" PRINCIPAL PRODUCT "GOLD" PLACER

STARTING DATE 1st NOV. 1985 CLOSING DATE -UNKNOWN-

DURATION OF OPERATION UNTIL ALL CLAIMS HAVE BEEN SAMPLED
AND DECISION TO MINE HAS BEEN REACHED

PERSON SENDING THIS NOTICE NEAL S. WHITE

TITLE OF PERSON SENDING THIS NOTICE OWNER - OPERATOR

DATE NOTICE SENT TO STATE MINE INSPECTOR DEC. 10, 1985

*A.R.S. Section 27-303 NOTIFICATION TO INSPECTOR OF BEGINNING OR SUSPENDING OPERATIONS: When mining operations are commenced in any mine or when operations therein are permanently suspended, the operator shall give written notice to the inspector at his office prior to commencement or suspension of operations.

SEE 1/4 SW 1/4
SEE S T 11N
R 2E