



CONTACT INFORMATION

Mining Records Curator
Arizona Geological Survey
1520 West Adams St.
Phoenix, AZ 85007
602-771-1601
<http://www.azgs.az.gov>
inquiries@azgs.az.gov

The following file is part of the

Arizona Department of Mines and Mineral Resources Mining Collection

ACCESS STATEMENT

These digitized collections are accessible for purposes of education and research. We have indicated what we know about copyright and rights of privacy, publicity, or trademark. Due to the nature of archival collections, we are not always able to identify this information. We are eager to hear from any rights owners, so that we may obtain accurate information. Upon request, we will remove material from public view while we address a rights issue.

CONSTRAINTS STATEMENT

The Arizona Geological Survey does not claim to control all rights for all materials in its collection. These rights include, but are not limited to: copyright, privacy rights, and cultural protection rights. The User hereby assumes all responsibility for obtaining any rights to use the material in excess of "fair use."

The Survey makes no intellectual property claims to the products created by individual authors in the manuscript collections, except when the author deeded those rights to the Survey or when those authors were employed by the State of Arizona and created intellectual products as a function of their official duties. The Survey does maintain property rights to the physical and digital representations of the works.

QUALITY STATEMENT

The Arizona Geological Survey is not responsible for the accuracy of the records, information, or opinions that may be contained in the files. The Survey collects, catalogs, and archives data on mineral properties regardless of its views of the veracity or accuracy of those data.

PRINTED: 11/27/2002

ARIZONA DEPARTMENT OF MINES AND MINERAL RESOURCES AZMILS DATA

PRIMARY NAME: BIG BANG ROADCUT CLAY

ALTERNATE NAMES:

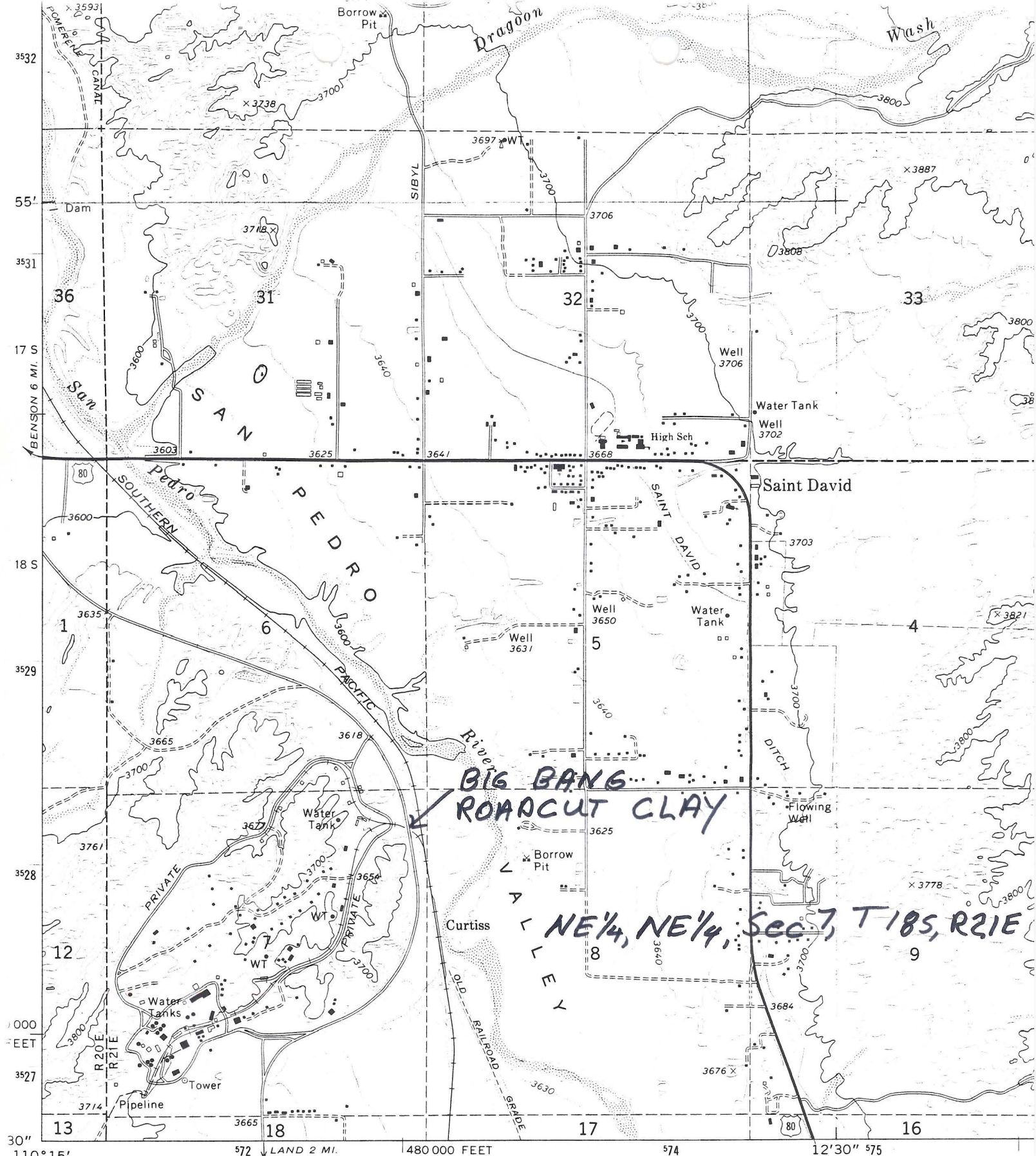
COCHISE COUNTY MILS NUMBER: 920

LOCATION: TOWNSHIP 18 S RANGE 21 E SECTION 7 QUARTER NE
LATITUDE: N 31DEG 53MIN 20SEC LONGITUDE: W 110DEG 13MIN 51SEC
TOPO MAP NAME: SAINT DAVID - 7.5 MIN

CURRENT STATUS: EXP PROSPECT

COMMODITY:
CLAY

BIBLIOGRAPHY:
ADMMR BIG BANG ROADCUT CLAY FILE
MOHON, JOHN, 1979. CERAMIC MATERIALS IN
SOUTHERN ARIZONA, P. 10 (GEO FILE)



Maped, edited, and published by the Geological Survey **SAINT DAVID 7.5' ARIZ**

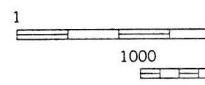
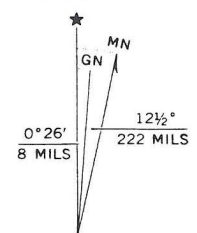
Control by USGS and NOS/NOAA

Topography by photogrammetric methods from aerial photographs taken 1972. Field checked 1973

Projection and 10,000-foot grid ticks: Arizona coordinate system, east zone (transverse Mercator)

1000-metre Universal Transverse Mercator grid ticks, zone 12, shown in blue. 1927 North American datum

Fine red dashed lines indicate selected fence lines



1.1 MI. TO ARIZ. 82
UMBSTONE 14 MI.