



CONTACT INFORMATION

Mining Records Curator
Arizona Geological Survey
1520 West Adams St.
Phoenix, AZ 85007
602-771-1601
<http://www.azgs.az.gov>
inquiries@azgs.az.gov

The following file is part of the

Arizona Department of Mines and Mineral Resources Mining Collection

ACCESS STATEMENT

These digitized collections are accessible for purposes of education and research. We have indicated what we know about copyright and rights of privacy, publicity, or trademark. Due to the nature of archival collections, we are not always able to identify this information. We are eager to hear from any rights owners, so that we may obtain accurate information. Upon request, we will remove material from public view while we address a rights issue.

CONSTRAINTS STATEMENT

The Arizona Geological Survey does not claim to control all rights for all materials in its collection. These rights include, but are not limited to: copyright, privacy rights, and cultural protection rights. The User hereby assumes all responsibility for obtaining any rights to use the material in excess of "fair use."

The Survey makes no intellectual property claims to the products created by individual authors in the manuscript collections, except when the author deeded those rights to the Survey or when those authors were employed by the State of Arizona and created intellectual products as a function of their official duties. The Survey does maintain property rights to the physical and digital representations of the works.

QUALITY STATEMENT

The Arizona Geological Survey is not responsible for the accuracy of the records, information, or opinions that may be contained in the files. The Survey collects, catalogs, and archives data on mineral properties regardless of its views of the veracity or accuracy of those data.

PRINTED: 11/27/2002

ARIZONA DEPARTMENT OF MINES AND MINERAL RESOURCES AZMILS DATA

PRIMARY NAME: BEN HUR

ALTERNATE NAMES:

CLAUDE MCNAIR
LAMAR BELLMAN
LANDSMAN
HATTER
BOTTIS GROUP
DEMPSEY

GRAHAM COUNTY MILS NUMBER: 151A

LOCATION: TOWNSHIP 5 S RANGE 19 E SECTION 36 QUARTER SE
LATITUDE: N 32DEG 56MIN 58SEC LONGITUDE: W 110DEG 20MIN 58SEC
TOPO MAP NAME: COBRE GRANDE MTN - 7.5 MIN

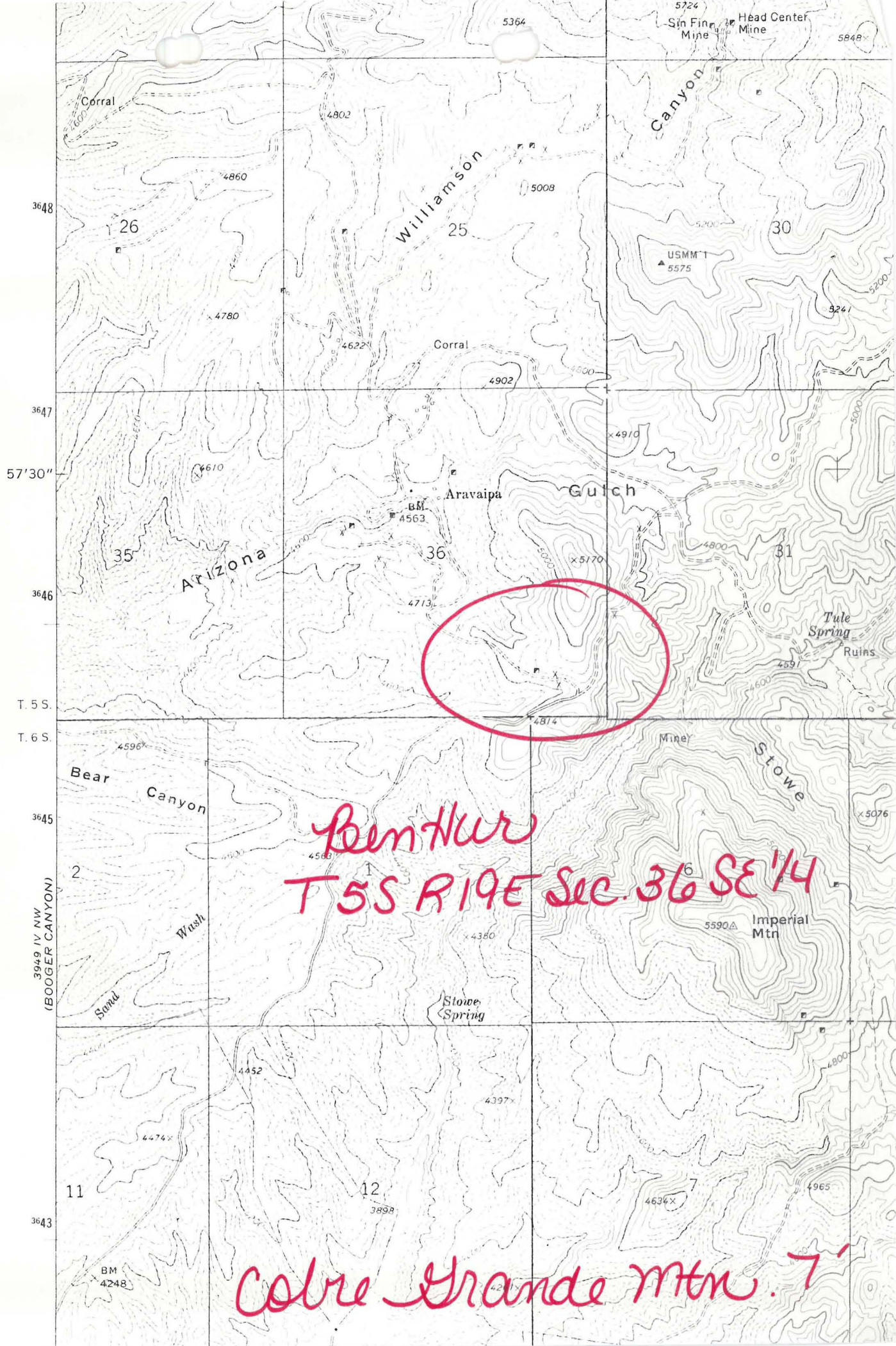
CURRENT STATUS: PAST PRODUCER

COMMODITY:

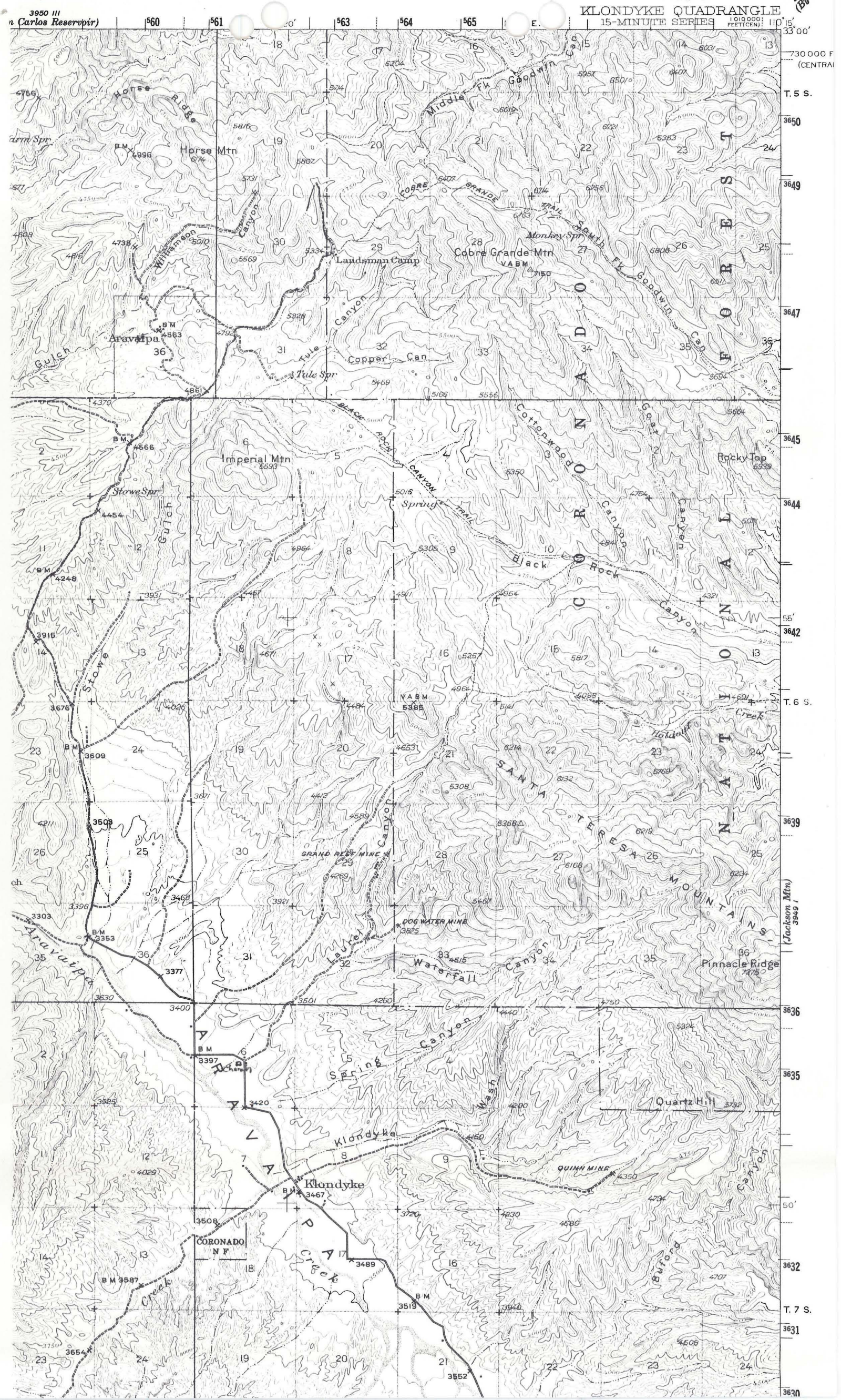
LEAD CARBONATE
LEAD SULFIDE
SILVER
ZINC
GOLD
URANIUM

BIBLIOGRAPHY:

USGS PP. 461, GEOLOGY OF THE KLONDYKE QUAD,
1964, P. 135
ROSS, CLYDE P., USGS BULL. 763, 1925, P. 91
ADMMR BEN HUR FILE
ADMMR BRUSHY GROUP FILE
ADMMR LANDSMAN MINE FILE
USAEC PRELIM RECONN. REPTS. 1958, P. 357
BLM AMC FILE 80003
ADMMR PHOTOS



110° 22' 30" 559000m.E. 560 R. 19 E. R. 20 E. 562 20' 561



3950 III
n Carlos Reservir)
560 561 562 563 564 565
E.
110° 15' 33" 00"
730 000 F
(CENTRAL)
T. 5 S.
3650
3649
3647
3645
3644
3642
T. 6 S.
3639
(Jackson Mtn) 3949'
3636
3635
50'
3632
T. 7 S.
3631
3630

T5S R19E

Aravaipa
Dist.

GORDAN

MAXWELL

PAT. 1038
GLORY

1038
PAT.
ARIZONA

1038
PAT.
DAVID

1038
PAT.
THANKSGIVING

1039

MAMOTH
CHIEF
PAT.

PAT. 1039
SILVER BELL

Sec. 25

1035
PAT.
KEEDY

1039
PAT.
CONETON

PAT.
CLIFTS 4012

PAT.
COLON 4012

NORTON
PAT.
4012

BRADY
PAT.
4012

PAT.
WILSON - 4012

PANAMA
PAT.
4012

1041
PAT.
NINA

1041
PAT.
NUMBER 1

1041
PAT.
No 2

PAT.
COOLIDGE - 4010

OWNS HEAD
PAT.
4012

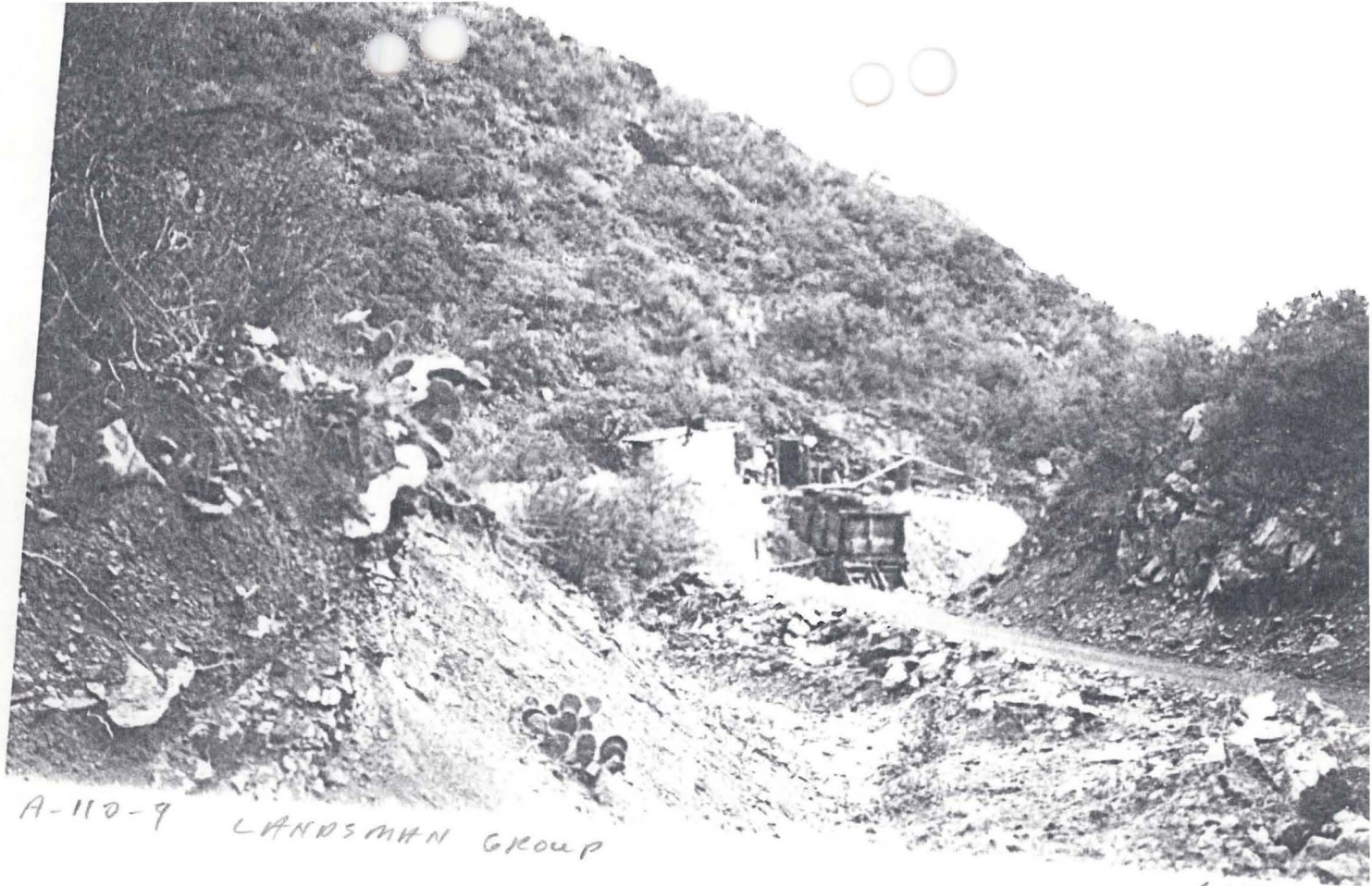
No 16
PAT.
4012

PAT.
SAND CARBONATE

PAT.
DAVES - 4010

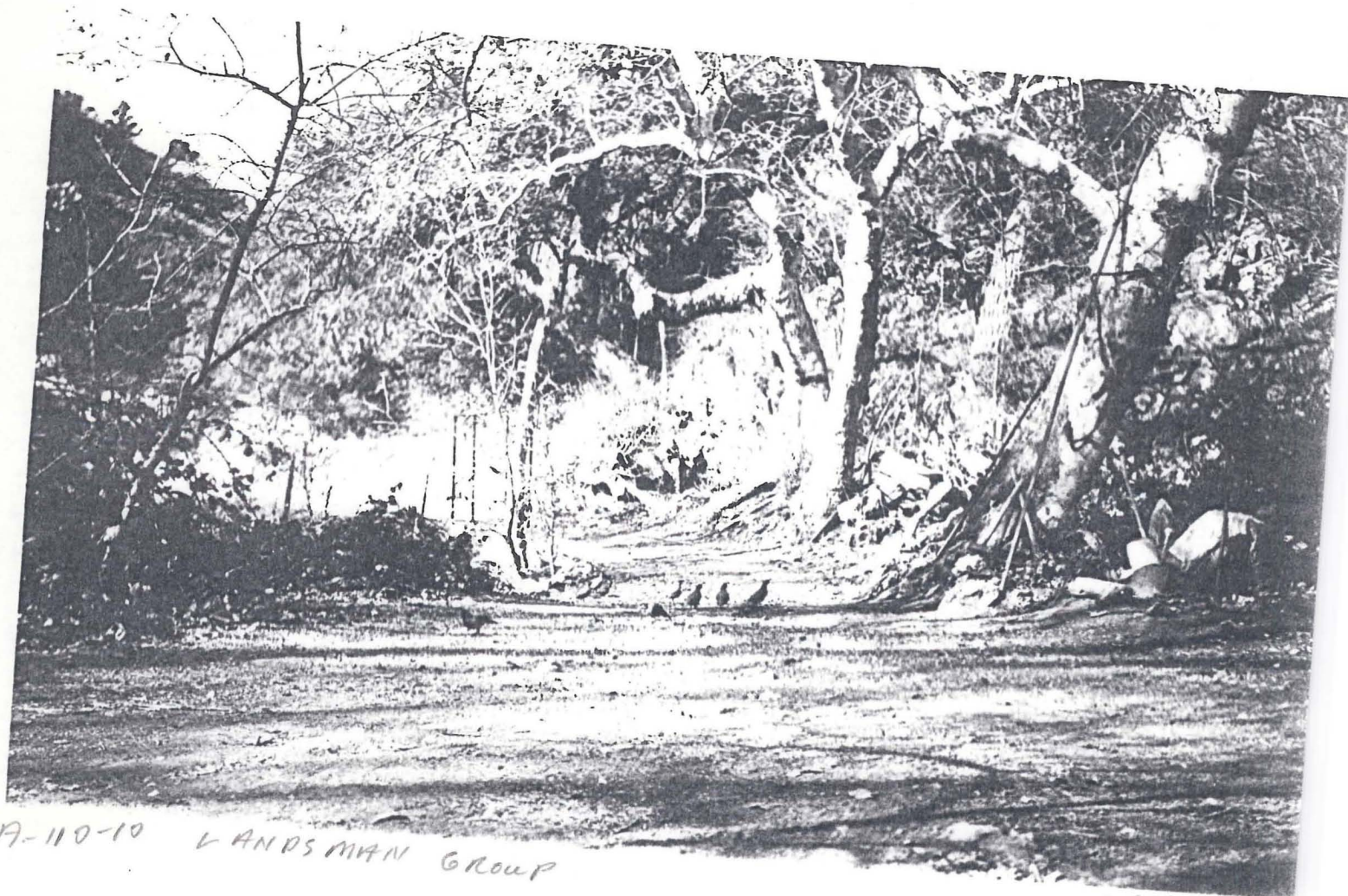
Sec. 36

Ben
Hur



A-110-9 LANDSMAN GROUP

LATE 40s



A-110-10 LANDSMAN GROUP

LATE 40s





BEN HUR

GRAHAM COUNTY
ARAVAIPA DISTRICT
T5S R19E Sec. 36

ALJ WR 5/5/60: Elton J. Kidd has sold his store at Klondyke and moved to Safford.

ALJ 6/8/61: Mrs. Claude McNair, Klondyke Store, Klondyke

Mrs. McNair informed the field engineer that she and her husband had purchased an interest in the Ben Hur Group of claims, (which was formerly held by Herb E. Hatter and O.P.M. Dempsey of Klondyke,) and that they, together with Elton J. Kidd, 1123 1st Ave., Safford, now own the property. She also stated that Elton J. Kidd and her husband are now performing the annual assessment work on the property. She also stated that annual assessment work was being done for the owners on the Sein Fein Mine.

GWI WR 2/9/68: Far Mining Enterprises, Fred Riebold, Box 447, Safford 85546. Have optioned the following in Aravaipa. Landsman Camp, the Brushy group from G. Botts, other claims from Bellman and Associates, plus their own staking for a total amount of patented and unpatented claims number 381. Mr. Riebold reports that Parson-Jurden are the consultants for them. They report that Bill Stoffers can run the mill until sometime in June. Bill Stoffers disagrees and says that they haven't made a deal with American Zinc on the mill.

MG WR 2/1/85: While visiting the Brushy Claim group, I stopped at the Ben Hur mine (Graham County). There is no activity at the property.



STATE OF ARIZONA
DEPARTMENT OF MINERAL RESOURCES

MINERAL BUILDING, FAIRGROUNDS
PHOENIX, ARIZONA 85007



Tucson, Arizona
Nov. 5, 1963

#151A

MEMORANDUM

To: Frank P. Knight, Director
From: Axel L. Johnson, Field Engineer
Re: Sale of Ben Hur Group in the Aravaipa-Klondyke area.

The following information was obtained from Mrs. Claude McNair, Klondyke on 10-10-63

The Ben Hur Group, consisting of 17 unpatented claims was sold by the previous owners, Claude McNair, Klondyke Rural Station, Willcos and Elton J. Kidd, 1123 1st Ave., Safford, to Lamar Bellman, Charles Awalt, Charles Kirkland, et al of Safford, Arizona.

The sale took place in August 1963. No plans have been announced by the new owners, as yet, regarding the operation, sale or lease of the property. Most of the new owners are Safford business men.

DEPARTMENT OF MINERAL RESOURCES
STATE OF ARIZONA
FIELD ENGINEERS REPORT

Mine Ben Hur Group

Date Oct. 4, 1961

District Aravaipa District, Graham County.

Engineer Axel L. Johnson

Subject: Field Engineers Report. Information from Claude McNair.

References Report of Sept. 10, 1959

Location In the vicinity of Aravaipa, north of Klondyke.

Number of Claims 13 unpatented claims.

Owners Claude McNair, Klondyke Rural Station, Willcox and Elton J. Kidd, 1123 - 1st Ave., Safford.

The above owners purchased the property recently (April or May) from the former owners, Herb. E. Hatter and O. P. M. Dempsey of Klondyke.

Operators Same as above.

Principal Minerals Lead, Zinc, Silver

Present Mining Activity Driving an adit into the mountain, following two small veins. 2 men working on week ends only. Progress about 4 ft. per week.

Ore Values Ore stockpile from the operations average 13 % lead and 3.5 % silver.

Milling & Marketing Operators expect to ship the ore to the A. S. & R. smelter at El Paso.

Review of Recent Operations Operators started driving the adit in the latter part of May. They are now in a distance of 15 ft., the last 9 ft. of which has been in ore. The adit follows two narrow veins of lead-silver ore. The veins are about one foot in width, and are separated with about one foot of waste. each
Operators obtain about 2,500 lbs. of ore per each 3 foot round. They now have about 3 tons of ore in a stockpile, which runs about 13 % lead, and 3.5 oz. silver.

Proposed Plans To continue the adit in the hopes and expectation that they will encounter a wider vein with higher grade ore.

DEPARTMENT OF MINERAL RESOURCES

STATE OF ARIZONA

FIELD ENGINEERS REPORT

Mine Ben Hur Group Date Sept. 10, 1959
District Aravaipa District - Graham County Engineer Axel L. Johnson
Subject: Field Engineer's Report - Information from Herb E. Hatter & Elton J. Kidd

#151A

Location: Near Klondyke

Number of Claims: 13 unpatented claims.

Owners: Herb E. Hatter, Elton J. Kidd and QPM. Dempsey, all of Klondyke, Arizona

Lessees: Southwest Mining Industries, H. Clyde Davis, Manager and Geologist
1000 North Mountain Avenue, Tucson, Arizona

The lease is reported to provide 10% royalty.

Principal Minerals: Zinc, lead and small amount of copper - mixed oxides and sulphides.

Present Activity: None

Geology: Veins and blowouts in rhyolite. (See previous reports)

Ore Values: Reported by Kidd as follows:

Zinc - 6-8%
Lead - About 2.3%
Copper - a fraction of 1%

Milling & Marketing Facilities: There is no mill on the property. A mill will be required to mill this ore, as most of the ore is not of shipping grade.

Past History: This property was formerly owned by Mr. Landsman, who called it the Landsman Group. On his demise it was held for some years by the Landsman estate, who finally dropped it. It was acquired by the present owners by relocation about one year ago.

Old Mine Workings: (1) 1 vertical shaft about 100 feet deep
(2) 1 adit about 350 feet long.
(3) A number of shallow shafts and open cuts

Proposed Plans: The lessees, The Southwest Mining Industries, are reported to plan some diamond drilling on the property. McClintock Drilling Company has been contacted for estimates on this work.

LEAD-ZINC QUESTIONNAIRE

October 11 1957.

Do you approve of the Emergency Lead-Zinc Committee's seeking relief for the lead-zinc industry and has it your authorization to speak for you? Yes

What Arizona Mines and Mills in the lead-zinc class do you control?

(1) Thirteen Unpatented Claims

(2) _____

Which ones are operating? (1) _____ (2) _____

If not operating, when shut down? (1) _____ (2) _____

Number employed, prior to shut-down, in mine, mill or sections thereof producing lead or zinc ores? (1) _____ (2) _____

Number so employed on January 1, 1957? (1) _____ (2) _____

Number so employed on October 1, 1957? (1) _____ (2) _____

Remarks Has been not operated for some time.

The property is under option. has been for some time. The parties holding the option are just making time due to the Lead Zinc Inc.

Dempsey & Hartley
Company
By: CR M. Dempsey
Signature Blondy R. Sta
Willcox, Ariz

Please fill in NOW, tear off, and mail to:

Arizona Department of Mineral Resources
Mineral Building, Fairgrounds
Phoenix, Arizona

DEPARTMENT OF MINERAL RESOURCES

STATE OF ARIZONA

FIELD ENGINEERS REPORT

NEWS ITEM

C
O
P
Y

~~No name for Ge. yet.~~

Mine Ben Hur Group
Williamson, Gullledge, Dempsey & Hatter operators ~~(Mining in Ben Hur Group now)~~
District Aravaipa Mining Dist. --- Graham Co. Engineer Axel L. Johnson
Subject: News Item --- Source of Information --- J. B. Williamson.

Location: Near Aravaipa.

Number of claims: 84 claims.
Leasing 37 unpatented claims from Frank Landsman.
Leasing 34 patented claims, called the Bullis and Royal Tanto Group.
Leasing 13 unpatented claims, called the Ben Hur Group.

Operators: J. B. Williamson, Globe, Ariz.
Grady Gullledge, Phoenix, Ariz.
O.P.M. Dempsey, Klondyke, Ariz.
H. E. Hatter, Klondyke, Ariz.

Officers: J. B. Williamson, Globe, Ariz. ---- Manager

Metals Mined: Zinc Ores.

Men Employed: Working 3 men steady, and an additional man part time.
Operations conducted on the Ben Hur Group at the present time.

Production Rate: Shipping 1 carload a week of ore to the Peru Mining Co. mill at Deming, N. Mex. Production about 8 tons per day.

Marketing Facilities: Shipping ore to the Peru Mining Co. mill at Deming.

Ore Values: Ores run from 10 to 20% of Zinc. However, from 3.5 to 4.0% of this ore is in the form of oxides, which is not recovered in the milling operation.

Mine Workings: 1 drift --- 300 ft. long
1 winze --- 25 ft. long
1 drift at bottom of winze --- 15 ft. long.

Proposed Plans: To start mining on the Landsman Group in the near future.

DEPARTMENT OF MINERAL RESOURCES

STATE OF ARIZONA

FIELD ENGINEERS REPORT

C
O
P
Y

NEWS ITEM (for Dept. Records & not for publication.)

Mine Ben Hur Group

Date Dec. 12, 1951

District Aravaipa District

Engineer Axel L. Johnson

Subject: News Item -- Source of Information - John Williamson

Location: In the vicinity of Aravaipa

Number of Claims: 13 claims in the Ben Hur Group
Total of 82 claims under lease or option.

Owners: Frank Landsman and Ed Doudell Estate

Operators: John Williamson, Globe, Ariz.
O.P.M. Dempsey, Klondyke, Ariz.
Herb Hatner, Klondyke, Ariz.
et. al.
Leasing and options from owners.

Officers: John Williamson is in charge of the operations.

Metals Mined: Lead and Zinc.

Men Employed: 5 men (day shift only)

Production Rate: 1 carload every 4 days --- approximately 13 tons per day.

Marketing Facilities: Hauling ore by truck to Cork Siding, and shipping the ore to the Peru Mining Co., at Deming, N. Mex. Have shipped 1 carload to date.

Ore Values: Ore is lead and zinc sulphides of shipping grade. Mr. Williamson did not wish to state the values per ton.

Present Operations: Stoping ore from a tunnel.

Remarks: John Williamson, the operator in charge asked that this information not be published, and be restricted to the Department's files.

#151 A

1. Landman Mine
2. Graham Court, Arizona
3. A. R. Byrd
4. E. A. Stone
5. Less than two hours on October 21, 1946.
6. Lead-zinc
7. Data subject to revision. See 1947 report (copy in Miami office).
8. _____

* * * * *

THE EAGLE-PICHER MINING & SMELTING COMPANY
MIAMI, OKLAHOMA



INTRA-COMPANY
CORRESPONDENCE

TO Grover Duff - Tucson Office
FROM John W. Chandler - Miami Office
SUBJECT: Exploration Work

DATE April 6, 1951

Dear Grover:

We are presently compiling a record of all the mines and prospects which we have examined for the Company during the past 10 years.

Starting with 1940, and listing the work done by years, such as 1940, 1941, 1942, etc., we would like to have the following information tabulated:

1. Name of property
2. Location - (State and County)
3. Who it was submitted by
4. Who made the examination
5. Time spent on the examination
6. Metals involved
7. General conclusions drawn from examination
8. Remarks - Under this heading could be shown whether we have done drilling or any other work in addition to the examination. Give brief outline. If the property subsequently became a mine unit and was operated so state.

We do not have a complete file in this office on all properties examined by the Company and we will combine your report with the one being made up from our files to make the final report complete. I would appreciate it if you could put someone on this work until it is completed, sending me three copies of your tabulation.

Best regards,

Jack.

John W. Chandler.

JWC/jm

4-25-51 - Mr. Chandler will send us a list of the properties on which they have reports in their files, and we will then send him the information on the others.

GJD