



## **CONTACT INFORMATION**

Mining Records Curator  
Arizona Geological Survey  
1520 West Adams St.  
Phoenix, AZ 85007  
602-771-1601  
<http://www.azgs.az.gov>  
[inquiries@azgs.az.gov](mailto:inquiries@azgs.az.gov)

The following file is part of the

Arizona Department of Mines and Mineral Resources Mining Collection

## **ACCESS STATEMENT**

These digitized collections are accessible for purposes of education and research. We have indicated what we know about copyright and rights of privacy, publicity, or trademark. Due to the nature of archival collections, we are not always able to identify this information. We are eager to hear from any rights owners, so that we may obtain accurate information. Upon request, we will remove material from public view while we address a rights issue.

## **CONSTRAINTS STATEMENT**

The Arizona Geological Survey does not claim to control all rights for all materials in its collection. These rights include, but are not limited to: copyright, privacy rights, and cultural protection rights. The User hereby assumes all responsibility for obtaining any rights to use the material in excess of "fair use."

The Survey makes no intellectual property claims to the products created by individual authors in the manuscript collections, except when the author deeded those rights to the Survey or when those authors were employed by the State of Arizona and created intellectual products as a function of their official duties. The Survey does maintain property rights to the physical and digital representations of the works.

## **QUALITY STATEMENT**

The Arizona Geological Survey is not responsible for the accuracy of the records, information, or opinions that may be contained in the files. The Survey collects, catalogs, and archives data on mineral properties regardless of its views of the veracity or accuracy of those data.

03/20/90

ARIZONA DEPARTMENT OF MINES AND MINERAL RESOURCES FILE DATA

PRIMARY NAME: BELMONT COPPER PROPERTY

ALTERNATE NAMES:

UNPATENTED CLAIMS MS 3093  
LONE STAR MS 3096, PATENTED  
PAT. & UNPAT. CLAIMS MS 2838  
UNPATENTED CLAIM MS 3094  
UNPATENTED CLAIM MS 3095  
LONESTAR  
CONS. HOLDING AND TRUST CO.

PINAL COUNTY MILS NUMBER: 110B

LOCATION: TOWNSHIP 2 S RANGE 12 E SECTION 12 QUARTER NW  
LATITUDE: N 33DEG 16MIN 21SEC LONGITUDE: W 111DEG 04MIN 28SEC  
TOPO MAP NAME: SUPERIOR - 7.5 MIN

CURRENT STATUS: PAST PRODUCER

COMMODITY:

SILVER  
GOLD LODE  
COPPER  
LEAD  
MANGANESE  
MOLYBDENUM  
VANADIUM  
LEAD CARBONATE

BIBLIOGRAPHY:

SHORT, M.N., ET.AL., AZBM BULL. 151,  
P. 154-158  
ADMMR BELMONT MINE FILE  
WILSON, E.D., ET.AL., AZBM BULL. 137, P. 170  
AZ. BLM MINING DISTRICT SHEET 609  
ADMMR MAGMA COPPER CO. FILES  
ADMMR U FILE  
CLAIMS EXTEND INTO SEC. 11  
FARNHAM, L.L., ET.AL., USBM IC 7990, 1961,  
P. 124-126 & 139-140  
ELSIN, M.J., & E.S. HEINEMAN, USGS BULL. 140,  
1934, P. 99  
TENNEY, J.B., MINERAL INDUSTRY OF AZ. AZBM  
BULL. 125, P. 65  
AZ. AN & PB DEPOSITS AZBM BULL. 156, P. 94-96  
ADMMR BELMONT COPPER COLVO FILE

CONTINUED ON NEXT PAGE

CONTINUATION OF BELMONT COPPER PROPERTY

TENNEY, J.B., MINERAL INDUSTRY OF AZ. AZBM  
BULL. 129, P. 56  
CLAIMS EXTEND INTO SEC. 11

BELMONT MINE

PINAL COUNTY

ABM Bull. 125 p. 65  
ABM Bull. 127 p. 85  
ABM Bull. 129 p. 56  
ABM Bull. 137 p. 170  
ABM Bull. 151 p. 156

USBM "U" file reports vanadium None.

A. L. Flagg vanadium reports - Book IV  
(nothing of any particular interest.)

Skilling's Mining Review, February 15, 1975, p. (re: 2/16/35 info.)

ABM Bull 156, 1950 p. 94-96

USGS Bull. 140 p. 99

"U" Files

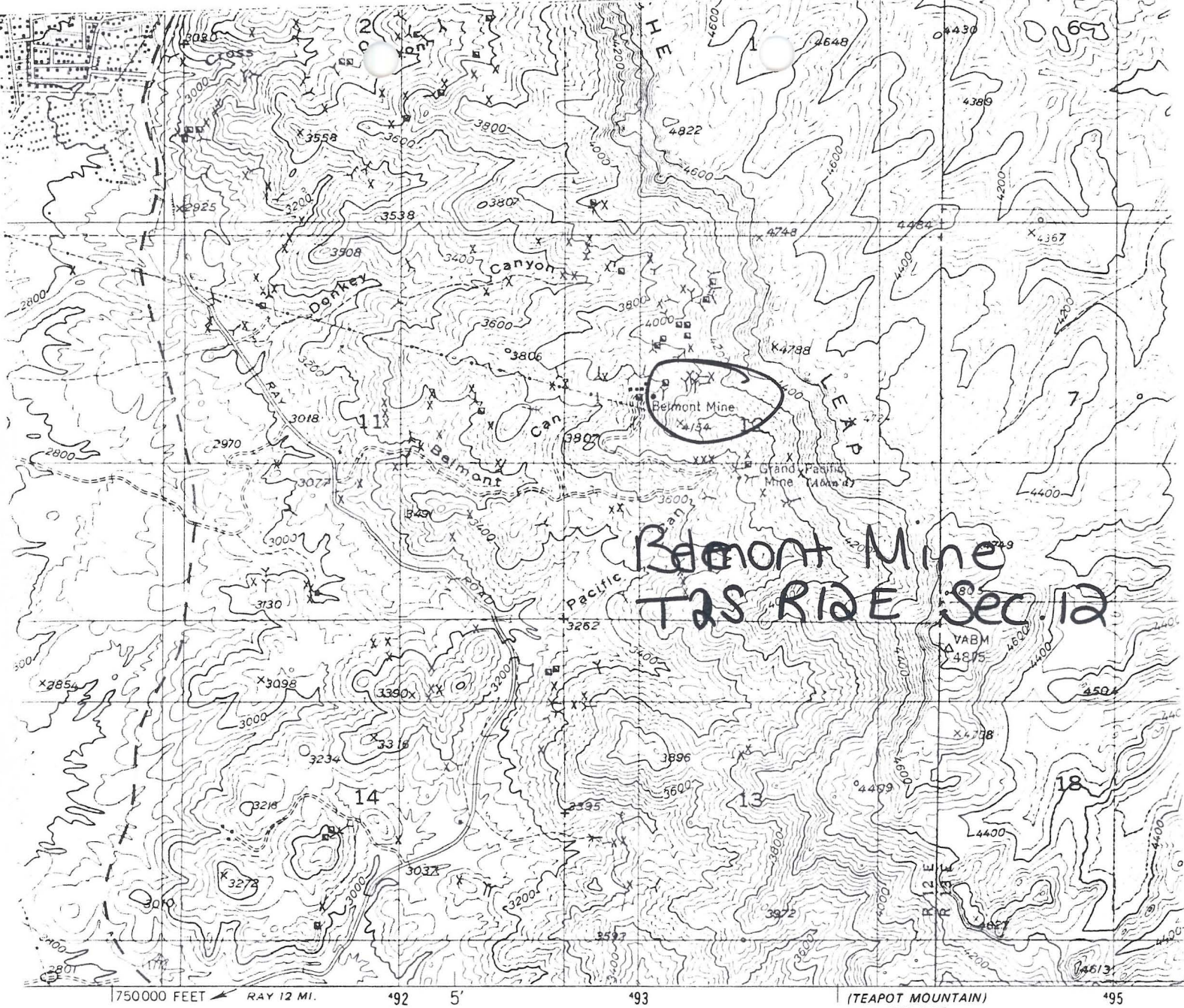
IC 7990, p. 124-136, 139-140

See: Magma Copper Co (f) Pinal

BLM Mining sheet #609

Superior 7.5' Topo (included in file)

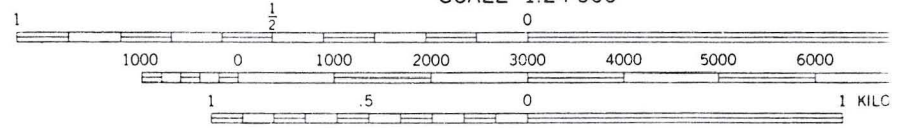
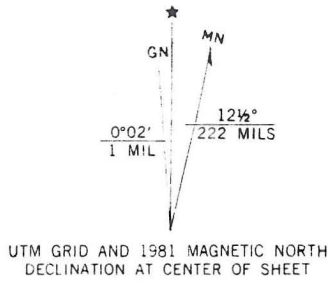




Belmont Mine  
TAS RIDE Sec. 12

urvey

ate  
grid,  
ted  
outh



CONTOUR INTERVAL 40 FEET  
NATIONAL GEODETIC VERTICAL DATUM OF 1929

THIS MAP COMPLIES WITH NATIONAL MAP ACCURACY STANDARDS  
FOR SALE BY U. S. GEOLOGICAL SURVEY, DENVER, COLORADO 80225, OR RESTON, VA  
A FOLDER DESCRIBING TOPOGRAPHIC MAPS AND SYMBOLS IS AVAILABLE ON REQUEST

Superior 7.5'

BELMONT

Ag, Au, Cu

Pinal

11 -

T 2 S, R 12 E

Chas. Smith, Box 29, Superior

'40

NAME OF MINE: BELMONT

COUNTY: Pinal

DISTRICT:

METALS: Ag

OPERATOR AND ADDRESS:

FILE STATUS

DATE:

DATE:

8/44

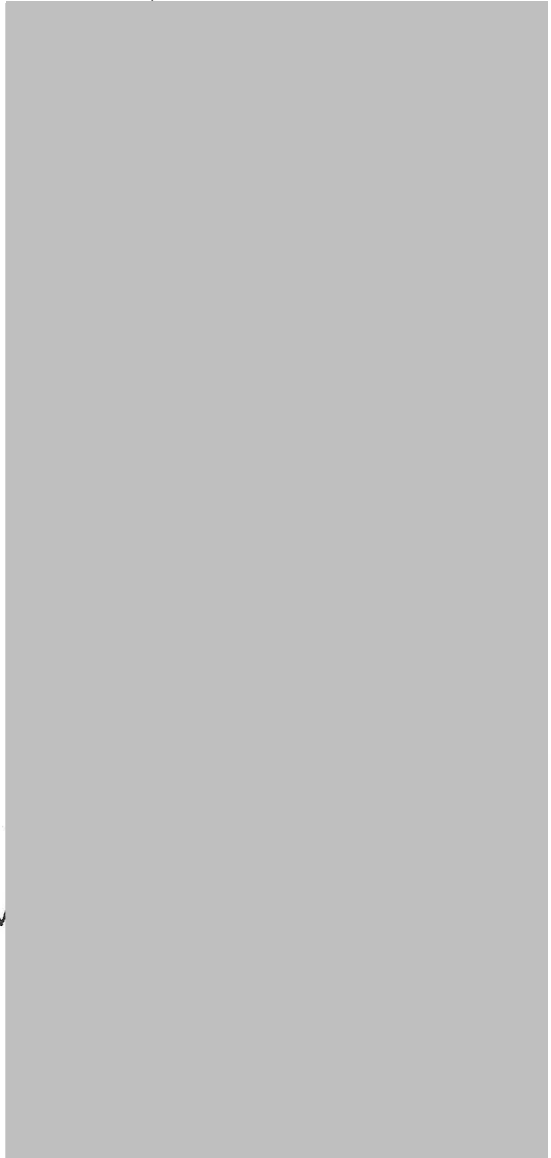
Chas. Smith, Lessee  
Superior, Ariz.

8/44

Pumping water for  
Superior & occasional  
carlot ag to El Paso.

*Anasconda tank option in 1956 and  
dropped it 2-57.*

"PAY DIRT" 4-21-61





DEPARTMENT OF MINERAL RESOURCES

News Items

Date 4/17/40

Mine Belmont

Location 2 Mi. South of Superior

Owner \_\_\_\_\_

Address \_\_\_\_\_

Under lease to

Operating Co. Chas. Smith

Address Superior, Arizona.

Pres. \_\_\_\_\_

Genl. Mgr. \_\_\_\_\_

Mine Supt. \_\_\_\_\_

Mill Supt. \_\_\_\_\_

Principal Metals Gold, silver, copper

Men Employed Several sub-lesors

Production Rate Intermittent

Mill, Type & Capacity \_\_\_\_\_

Power, Amt. & Type \_\_\_\_\_

Signed Wolcott

(Over)

DEPARTMENT OF MINERAL RESOURCES

News Items

Date 5/22

Mine BELMONT COPPER CO.

Location SUPERIOR.

Owner LEASE - HARRY ALLEN & LEE BOYER

Address SUPERIOR

3 MEN - 1/2 OZ. AU ORE

Operating Co. 100 TONS A MONTH TO

MAGNA

Address \_\_\_\_\_

SMITH BROS - HAVE 4 MEN ON

Pres. MANY MINE LEASE AG - MINDRE

Genl. Mgr. 100 TONS A MONTH

Mine Supt. \_\_\_\_\_

Mill Supt. ABBOT LEASE - 3 MEN

Principal Metals 140# LEVEL

Men Employed 100 TONS A MONTH

Production Rate \_\_\_\_\_

Mill, Type & Capacity ARIZONA FUSION CO -

PUMPING CITY WATER FROM BELMONT

Power, Amt. & Type RETIMBERING OLD WORKINGS

TO KEEP WATER. 4 TO 5 MEN

Signed JTC

(Over)

BELMONT MINE

PINAL

Telephone call, Harry Winters, mining consultant, wanted information on Belmont Mining Co. Gave him a rundown on the history, property and that Newmont had optioned it for \$800,000. GWI WR 12/15/76

---



BELMONT MINE

PINAL COUNTY,  
PIONEER MINING DIST.

Magma Copper Co. is reported to have taken a 15-year option on 120 unpatented and 12 patented mining claims of Belmont Mining Co. at Superior, Arizona. The properties are contiguous with 50 claims that Magma took an option on in 1958.

MINING CONGRESS JOURNAL, May, 1961, p 88

---

MAGMA COPPER OPTIONS 132 CLAIMS NEAR SUPERIOR

Mining claims of the Belmont Copper Mining Company, two miles southeast of Superior, Arizona, are being purchased by the Magma Copper Company. Sale price for the Belmont holdings is set at \$800,000, with an option to reconvey the property or make payment by January 1, 1976.

The Belmont property consists of 120 unpatented and 12 patented claims which are contiguous with holding of the Queen Creek Copper Company. In 1958, Magma took a 12-year option to purchase Queen Creek's 50 mining claims for \$375,000. The combined Belmont and Queen Creek properties cover 3.5 square miles.

In January of 1956, Anaconda Company optioned the claims held by Belmont Copper Mining Company, Queen Creek Copper Company, Magma Superior Copper Company, and Grand Pacific. However, the options were dropped in October of that year, following a limited amount of drilling described as "disappointing".

For many years the Belmont mine was one of the main sources of water supply for the town of Superior. Approximately 194,000 gallons of water per day were pumped from the 1,650-foot main shaft, but the lease with the Arizona Water Company expired early this year. Superior's main water supply now comes from wells near Florence Junction.

The Belmont Copper Mining Company was organized in 1925 by the Alexander Mackay interests of Scotland. The three-compartment shaft was sunk to the 1,650-foot level and more than 17,000 feet of underground development work completed, plus 50,000 feet of diamond drilling. Depression conditions, together with the death of company officers, forced the termination of Belmont's development plans. Since then, activity at the property has been intermittent and largely by leasees.

Taken from MINING WORLD, June 1961, p 40/

---

DEPARTMENT OF MINERAL RESOURCES  
STATE OF ARIZONA  
MINE OWNER'S REPORT

Date March 25, 1940

1. Mine Belmont
3. Mining District & County Pioneer - Pinal County
4. Former name Consolidated Holding Trust Co.
5. Owner Belmont Copper Mining Co.
7. Operator In charge - E. H. Smith, Lessee
9. President, Owing Co. R. F. B. Mackay
10. Gen. Mgr. —
11. Mine Supt. —
12. Mill Supt. —
13. Men Employed None by Company
18. Operations: Present Mine, for past 4 years and at present, worked by Leasers.
19. Operations: Planned None at present time.
20. Number Claims, Title, etc. 120 claims and fractions of which 12 are patented
21. Description: Topography & Geography Elevation Main Shaft and Plant 3,640 and about 1,800 feet above Superior. Surface is rugged and there are a number of gulches and ravines. Western extremity of Property on Resort, elevation 3,000 feet and surface gradually rises over a distance of about a mile in an easterly direction to an elevation of 4,700 feet — the top of the Kaibito cliffs that form Apache Leap.
22. Mine Workings: Amt. & Condition Main shaft 1,600 feet deep. Levels are 140', 500', 700', 1,000', 1,150', 1,450' and 1,600'. All workings below 700' are under water. Numerous other shafts and tunnels extending over an area in a North-South direction of about 1 mile, sunk and driven by Leasers. Air line from Compressor Plant at South end of Property, extends North & various groups of Leasers have thus secured air for drilling etc.

2. Location 2 miles South of Superior, Pinal County
6. Address (Owner) Security Bldg. Phoenix.
8. Address (Operator) Box 29, Superior, Ariz.
- 9A. President, Operating Co. —
14. Principal Minerals Silver, Gold, Copper
15. Production Rate About 300 tons monthly
16. Mill: Type & Cap. 1000 tons direct smelting
17. Power: Amt. & Type Electric power furnished by Salt River Valley Water Users Associa



3. Geology & Mineralization Extensive series of sedimentaries - 2000' thick chiefly limestone - Martin - Escabrosa, 1000' underlain by Niabasa silt. Ore occurs as veins in East-West Fault-Fratures or Cross Fratures also as bedding veins coursing North and South at certain horizons and dipping 30 degrees following the general dip of the beds to the East

4. Ore: Positive & Probable, Ore Dumps, Tailings <sup>Deep</sup> Workings in main shaft all in underlying Niabasa failed to locate Commercial orebody but recent work by Leasors in shafts farther East and by Company in 140' level proves that ore shoots dip or rake to the East and away from the main shaft. It is apparent the fact that orebodies were not found at depth in the main shaft. These deep workings were too far West to catch the downward trend of the ore shoots as developed and mined near the surface.

4A. Dimensions and Value of Ore body commercial ore has been mined by Leasors from a separate & distinct East-West fault fracture vein of shafts & tunnels during past few years. Total production to November 31<sup>st</sup> 1939 20,265 kilograms average gross value \$12.50 per ton containing 5,666 ounces gold, 220,000 ounces silver, 225,000 ounces copper. The tonnage blocked out of any quantities since Leasors mine out ore in shaft - Lower Leasors now opening up good vein of ore on tunnel level at a depth of 400 feet. and are shipping to smelter.

5. Mine, Mill Equipment & Flow-Sheet Mine Equipment includes Hoist, 2 Compressors approximately 1,500 cubic feet of air. Blacksmith Shop, assay office, changes Room, toilet Rooms & General office.

6. Road Conditions, Route Main Road leaves Superior-Bay Highway 2 miles South of Superior - fence East & reaches plant about 1 mile. Cars can pass at certain points - Road in fair condition - can be kept in good condition by periodical surfacing & drainage.

7. Water Supply Very large supply of good potable water in main shaft. This water is the main source of supply for the town of Superior and is distributed by the Arizona Edison Company.

8. Brief History Incorporated in Arizona 1925. Largest stockholders are now Trustees on various Estates

9. Special Problems, Reports Filed

10. Remarks

1. If property for sale: Price, terms and address to negotiate.

32. Signature Arthur Smith Secretary

3. Use additional sheets if necessary.

DEPARTMENT OF MINERAL RESOURCES  
STATE OF ARIZONA  
OWNERS MINE REPORT

Date March 25, 1940

Mine Belmont ✓

District Pioneer, Pinal County

Location 2 miles south of Superior  
Pinal County

Former name Consolidated Holding and Trust Co. ✓

Owner Belmont Copper Mining Co. ✓

Address Security Bldg., Phoenix, Ariz.

Operator Incharge--C. H. Smith, Lessee ✓

Address Box 29, Superior, Ariz.

President R. F. Mackay ✓

Gen. Mgr.

Mine Supt.

Mill Supt.

Principal Metals Silver, Gold, Copper. ✓

Men Employed None by company

Production Rate About 300 tons monthly

Mill: Type & Cap. Ore is direct smelting

Power: Amt. & Type Electric power furnished by  
Salt River Valley Water Users Association.

Operations: Present Mine, for past 4 years and at present,  
worked by leasers

Operations Planned None at present time

Number Claims, Title, etc. 120 claims and fractions of which 12 are patented

Description: Topog. & Geog. Elevation main shaft and plant 3,640 and about 800 ft. above Superior. Surface is rugged and there are a number of gulches and ravines. Western extremity of property on desert, elevation 3000 ft. and surface gradually rises over a distance of about 2 miles in an easterly direction to an elevation of 4,700 ft. The top of the Dacite Cliffs that form Apache Leap.

Mine Workings: Amt. & Condition Main shaft 1600 ft. deep. Levels are 140, 500; 700, 1000, 1150, 1450, and 1600ft. All workings below 700 ft. are under water. Numerous other shafts and tunnels extending over an area in a NS direction of about 1 mile, sunk and driven by leasers. Our line from Compressor Plant at S end of property extends N and various groups of leasers have thus secured air for drilling etc.  
(over)



**Geology & Mineralization** Extensive series of sedimentaries, 2000 ft. chiefly limestone, martin, escabrassa, pasco underlain by diabase silt. Ore occurs as veins in E,W Fault Fissures ar cross fractions also as bedding veins coursing N and S at certain horizons and dipping 30° following the general dip of the beds to the E

**Ore: Positive & Probable, Ore Dumps, Tailings** Deep workings in main shaft all in underlying diabase, failed to locate commercial ore body, but recent work by leasers in shafts farther E and by company on 140 ft. level proves that ore shoots dip or rake to the E and away from the main shaft and this explains the fact that ore bodies were not found at depths in main shaft. These deep workings were too far W to catch the downward trend of the ore shoots as developed and mined near the surface.

**Mine, Mill Equipment & Flow Sheet** Commercial ore has been mined by leasers from 9 separate and distinct East West fissure veins by shafts and tunnels during past few years. Total production to Dec. 31, 1939, 20,265 dry tons. Average gross value \$12.50 per ton containing 3,666 oz. of gold, 230,000 oz. silver, 235,000 # copper. No tonnage blocked out of any quatity since leasers mine out ore in sight. However leasers now opening up good vein of ore on tunnel level at a depth of 400 ft. and are shipping to smelter.

**Road Conditions, Route** Mine equipment includes hoist, 3 compressors , approximately 1500cu.ft. of air, blacksmith shop, assay office, change room, store rooms, general office

**Water Supply** Main road leaves Superior-Ray Highway 2 miles S of Superior, thense E and reaches plant about 1 mile. Cars can pass at certain points. Road in fair condition and can be kept in good condition by periodical surfacing and drainage.

**Brief History** Very large supply of good patable water in main shaft. This water is the main source of supply for the town of Superior and is distributed by the Arizona Edison Company.

Incorporated in Arizona in 1925. Largest stockholdrs are now Trustees on various estates.

**Special Problems, Reports Filed**

**Remarks**

If property for sale: Price, terms and address to negotiate.

Signed.....Arthur I. Smith.....  
Secretary

Use additional sheets if necessary.

DEPARTMENT OF MINERAL RESOURCES  
STATE OF ARIZONA  
OWNERS MINE REPORT

Date March 23, 1940

Mine Belmont

District Pioneer, Pinal County

Location 2 miles south of Superior  
Pinal County

Former name Consolidated Holding and Trust Co.

Owner Belmont Copper Mining Co.

Address Security Bldg., Phoenix, Ariz.

Operator Leasing—C. R. Smith, Lessee

Address Box 29, Superior, Ariz.

President R. F. Mackey

Gen. Mgr.

Mine Supt.

Mill Supt.

Principal Metals Silver, Gold, Copper.

Men Employed None by company

Production Rate About 300 tons monthly

Mill: Type & Cap. Ore is direct smelting

Power: Amt. & Type Electric power furnished by  
Salt River Valley Water Users Association.

Operations: Present Mine, for past 4 years and at present,  
worked by lessees

Operations Planned None at present time

Number Claims, Title, etc. 180 claims and fractions of which 12 are patented

Description: Topog. & Geog. Elevation main shaft and plant 3,640 and about 300 ft. above  
Superior. Surface is rugged and there are a number of gulches  
and ravines. Western extremity of property on desert, elevation  
3000 ft. and surface gradually rises over a distance of about  
2 miles in an easterly direction to an elevation of 4,700 ft.  
The top of the Dacite Cliffs that form Apache Leap.

Mine Workings: Amt. & Condition Main shaft 1600 ft. deep. Levels are 140, 500, 700, 1000,  
1100, 1450, and 1600 ft. All workings below 700 ft. are  
under water. Numerous other shafts and tunnels extending  
over an area in NE direction of about 1 mile, sunk and  
driven by lessees. Our line from Compressor Plant at S  
end of property extends N and various groups of lessees  
have thus secured air for drilling etc.

(over)



**Geology & Mineralization** Extensive series of sedimentaries, 2000 ft. chiefly limestone, marlin, escabrassa, gesso underlain by diabase silt. Ore occurs as veins in E, W Fault Fissures or cross fractures also as bedding veins coursing N and S at certain horizons and dipping 30° following the general dip of the beds to the E

**Ore: Positive & Probable, Ore Dumps, Tailings** Deep workings in main shaft all in underlying diabase, failed to locate commercial ore body, but recent work by leasers in shafts farther E and by company on 140 ft. level proves that ore shoots dip or rake to the E and away from the main shaft and this explains the fact that ore bodies were not found at depths in main shaft. These deep workings were too far W to catch the downward trend of the ore shoots as developed and mined near the surface.

**Mine, Mill Equipment & Flow Sheet** Commercial ore has been mined by leasers from 9 separate and distinct East West fissure veins by shafts and tunnels during past few years. Total production to Dec. 31, 1939, 20,265 dry tons. Average gross value \$12.50 per ton containing 3,666 oz. of gold, 250,000 oz. silver, 235,000 lb copper. No tonnage blocked out of any quality since leasers mine out ore in sight. However leasers now opening up good vein of ore on tunnel level at a depth of 400 ft. and are shipping to smelter.

**Road Conditions, Route** Mine equipment includes hoist, 3 compressors, approximately 1500cu.ft. of air, blacksmith shop, assay office, change room, store rooms, general office

**Water Supply** Main road leaves Superior-Ray Highway 2 miles S of Superior, thence E and reaches plant about 1 mile. Cars can pass at certain points. Road in fair condition and can be kept in good condition by periodical surfacing and drainage. Very large supply of good potable water in main shaft. This water is the main source of supply for the town of Superior and is distributed by the Arizona Edison Company.

**Brief History** Incorporated in Arizona in 1925. Largest stockholders are now Trustees on various estates.

**Special Problems, Reports Filed**

**Remarks**

If property for sale: Price, terms and address to negotiate.

Signed.....Arthur I. Smith.....  
Secretary

Use additional sheets if necessary.

\*GENERAL REFERENCES

- REFERENCE 1 F1 < ABGMT CLAIM FILES >
- REFERENCE 2 F2 < ABGMT-USBM FILE DATA >
- REFERENCE 3 F3 < AZ DEPT MIN RESOURCES FILE DATA >
- REFERENCE 4 F4 < USBM FILES >

- L110 CONT < CONSOLIDATED HOLDING AND TRUST CO. (1925); ORIGINAL GROUP OF CLAIMS KNOWN AS DAGGS GROUP >
- M220 CONT < WORKINGS ON THESE CLAIMS AND ADJOINING CLAIMS OF THE BELMONT GROUP INCLUDING NUMEROUS TUNNELS, SHAFTS >
- N5 CONT < PENNSYLVANIAN, NACO LIMESTONE, ESCAMOSA LIMESTONE AND MARTIN LIMESTONE >
- E5 < SHORT, M.N., GEOLOGY AND ORE DEPOSITS OF THE SUPERIOR MINING AREA, ARIZONA, 1943, ARM BULLETIN 151, P. 157-158 >
- F6 < WILSON, ED, ARIZONA LODE GOLD MINES AND GOLD MINING, 1967, ARM BULLETIN 137, P. 170 >
- F7 < FARNHAM, L.L., MANGANESE DEPOSITS OF EASTERN ARIZONA, 1961, USBM 107990, P. 124-126, 139-140 >
- F8 < RANSOME, FL., DEPOSITS OF MANGANESE ORE IN ARIZONA, 1919, USGS 710, P. 164 >
- F9 < USGS MINERAL INVESTIGATIONS FIELD STUDIES MAP MF-253, 1962 >

#110B

U.S. CRIB-SITE FORM

RECORD IDENTIFICATION

RECORD NUMBER B10 < \_\_\_\_\_ > RECORD TYPE B20 < X, I, M > DEPOSIT NUMBER B40 < \_\_\_\_\_ >  
 REPORT DATE G1 < 9.2.03 > INFORMATION SOURCE B30 < 1, 2 > FILE LINK IDENT. B50 < USBM-004 021 0152 >  
YR. MO.  
 REPORTER (SUPERVISOR) G2 < ROTH, FRANCES A. > < GEST, DON E. >  
(last, first, middle initial) (last, first, middle initial)  
 REPORTER AFFILIATION G5 < ABGMT > SITE NAME A10 < BELMONT MINE >  
 SYNONYMS A11 < \_\_\_\_\_ >

LOCATION

MINING DISTRICT/AREA A30 < PIONEER DISTRICT >  
 COUNTY A60 < PINAL > STATE A50 < AZ > COUNTRY A40 < U.S. >  
 PHYSIOGRAPHIC PROV A63 < 1, 2, 4 >  
 DRAINAGE AREA A62 < 1, 5, 0, 5, 0, 1, 0, 0, 4 > LAND STATUS A64 < 0, 1, 4, 4, 1, 9, 7, 9 >  
 QUADRANGLE NAME A90 < SUPERIOR > QUADRANGLE SCALE A100 < 2, 4, 0, 0, 0 >  
(1, 1, 9, 4, 9)  
 SECOND QUAD NAME A92 < \_\_\_\_\_ > SECOND QUAD SCALE A91 < \_\_\_\_\_ >  
 ELEVATION A107 < 3, 8, 0, 0, 4, F, T >

UTM ACCURACY GEODETTIC  
 NORTHING A120 < 3, 6, 8, 1, 3, 0, 0 > ACCURATE  (circle) LATITUDE A78 < \_\_\_\_\_ N >  
 EASTING A130 < 7, 9, 2, 9, 9, 0 > ESTIMATED EST < \_\_\_\_\_ > LONGITUDE A80 < \_\_\_\_\_ W >  
 ZONE NUMBER A110 < 1, 1, 2 >

CADASTRAL  
 TOWNSHIP(S) A77 < 0, 0, 2, S, 4 > RANGE(S) A78 < 0, 1, 2, E, 4 >  
 SECTION(S) A79 < 12 >  
 SECTION FRACTION(S) A76 < SW OF NW >  
 MERIDIAN(S) A81 < GILA AND SALT RIVER >

POSITION FROM NEAREST PROMINENT LOCALITY A82 < ABOUT 0.4 MILES BELOW APACHE LEAP IN BELMONT CANYON >  
 LOCATION COMMENTS A83 < \_\_\_\_\_ >

ESSENTIAL INFORMATION  
 ESSENTIAL SOMETIMES OR HIGHLY RECOMMENDED



