



CONTACT INFORMATION

Mining Records Curator
Arizona Geological Survey
1520 West Adams St.
Phoenix, AZ 85007
602-771-1601
<http://www.azgs.az.gov>
inquiries@azgs.az.gov

The following file is part of the

Arizona Department of Mines and Mineral Resources Mining Collection

ACCESS STATEMENT

These digitized collections are accessible for purposes of education and research. We have indicated what we know about copyright and rights of privacy, publicity, or trademark. Due to the nature of archival collections, we are not always able to identify this information. We are eager to hear from any rights owners, so that we may obtain accurate information. Upon request, we will remove material from public view while we address a rights issue.

CONSTRAINTS STATEMENT

The Arizona Geological Survey does not claim to control all rights for all materials in its collection. These rights include, but are not limited to: copyright, privacy rights, and cultural protection rights. The User hereby assumes all responsibility for obtaining any rights to use the material in excess of "fair use."

The Survey makes no intellectual property claims to the products created by individual authors in the manuscript collections, except when the author deeded those rights to the Survey or when those authors were employed by the State of Arizona and created intellectual products as a function of their official duties. The Survey does maintain property rights to the physical and digital representations of the works.

QUALITY STATEMENT

The Arizona Geological Survey is not responsible for the accuracy of the records, information, or opinions that may be contained in the files. The Survey collects, catalogs, and archives data on mineral properties regardless of its views of the veracity or accuracy of those data.

05/05/87

ARIZONA DEPARTMENT OF MINES AND MINERAL RESOURCES FILE DATA

PRIMARY NAME: BELLE OF ARIZONA MINE

ALTERNATE NAMES:

LA PAZ COUNTY MILS NUMBER: 303

LOCATION: TOWNSHIP 4 N RANGE 18 W SECTION 35 QUARTER C
LATITUDE: N 33DEG 38MIN 41SEC LONGITUDE: W 114DEG 04MIN 57SEC
TOPO MAP NAME: QUARTZSITE.- 15 MIN

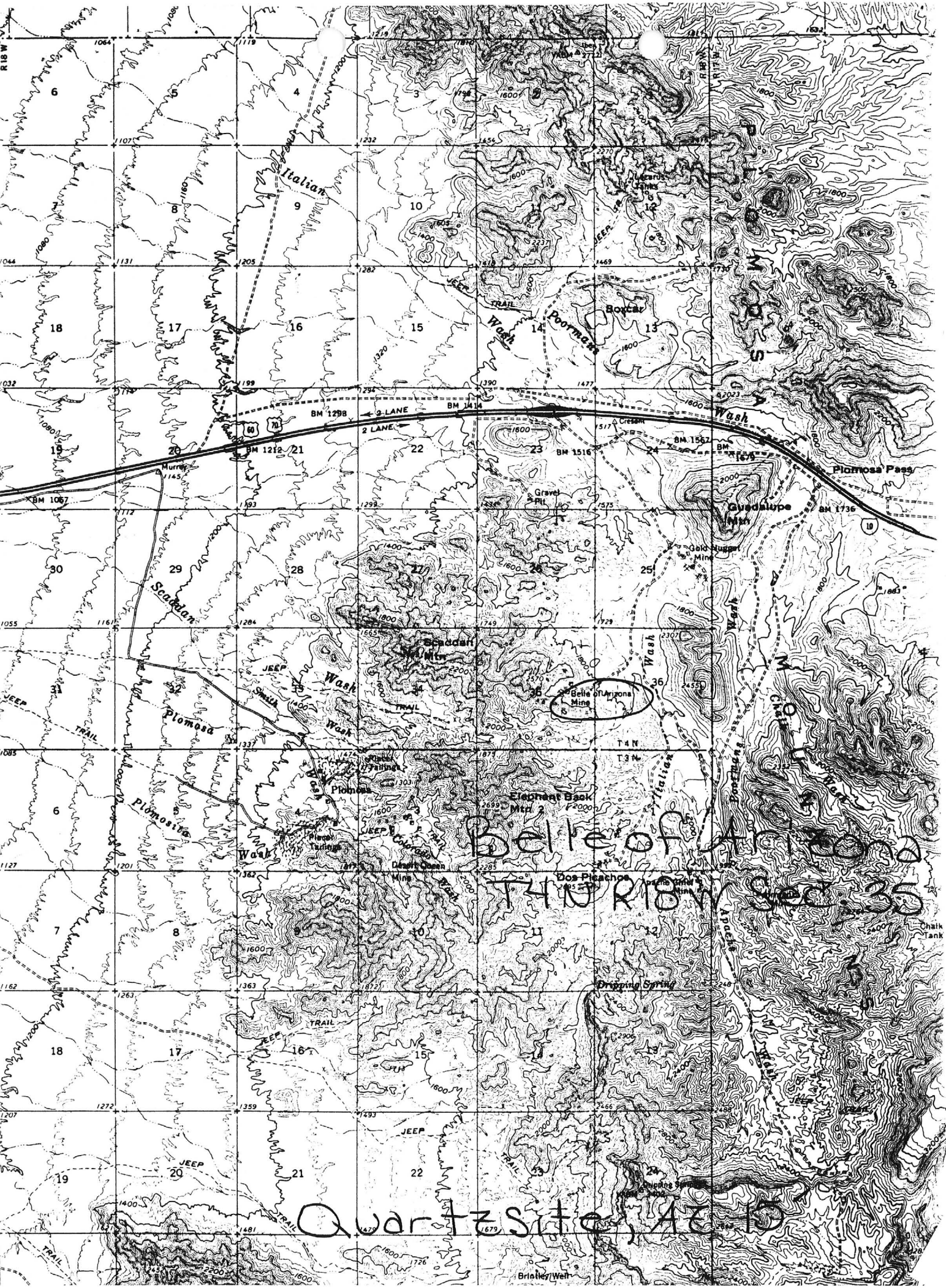
CURRENT STATUS: PAST PRODUCER

COMMODITY:

GOLD LODE
SILVER

BIBLIOGRAPHY:

KEITH, S.B., 1978, AZBM BULL. 192, P. 166
ADMMR BELLE OF ARIZONA FILE



Belle of Arizona
T4N R18W Sec. 35

Quartz Site, AZ 15

Mr. Webster, who owns the Belle of Arizona mine, had injured his back and was not working for the present. He has a small plant consisting of a crusher, ball mill and tables. Recent work underground has opened a fair pocket of good ore.

LAS Quartzsite Conf. 1-5-61

Mr. Walker stated that Webster is developing some narrow quartz gold veins in schist. The veins seldom are over a foot wide and appear to occupy a shear zone. The ore as treated in the mill usually runs from \$30 to \$40 per ton in gold. This rock is mixed with dump material that runs about \$5.15 per ton. LAS Conf. with Neel Walker 1-4-62

Mr. Webster has done little work since before Christmas due to injuries caused by an automobile accident. Prior to this during 1963, a little gold ore was treated and some development work done. The mine contains some copper, but mostly contains gold.

Memo LAS 2-6-64

Walker reported that M. F. Webster had died in January and that Mrs. Webster was still living out at the mine even though she is currently away. LAS Memo 2-9-66

RRB WR 8/21/81: Visited the Belle of Arizona, Sec. 35, T4N R18W, Quartzsite Quad. There was no one there and no sign of any recent activity. A sign at the shack proclaimed Kovalcheck to be the owner.

DEPARTMENT OF MINERAL RESOURCES

STATE OF ARIZONA
FIELD ENGINEERS REPORT

Mine ¹ Copper Belle - Belle of Arizona

Date May 15, 1961

District Plomosa Dist., Yuma County

Engineer Lewis A. Smith

Subject: Interview with M.F. Webster

Mr. Webster is going to try out the "Clint" dry machine on his dumps (gold mainly). He had watched this machine at Desert Gold and the Applington placer. His tests show fine gold of pretty good grade in the dump fines. He now has a gravity concentration plant. Mr. Webster drove a 2 inch pipe into the dumps and the resultant samples showed \$5.15 in gold. Peculiarly pan-amalgamation did not yield good results on the dump material, although it did a satisfactory job on the fresh ore. Tabling was not too good because of the fineness of the gold particles. He states that if the Clint machine does not prove adequate he may install cyanide.

DEPARTMENT OF MINERAL RESOURCES

STATE OF ARIZONA

FIELD ENGINEERS REPORT

Mine Belle of Arizona

Date 5-9-58

District Plomosa - Yuma County

Engineer Lewis A. Smith

Subject: Field visit

Location: 2 miles south of the Gold Nuggett Mine, 11 miles E of Quartzsite

Owners: Ray B. Webster and M. F. Webster
Box 59, Quartzsite, Arizona

Claims: Seven

Metals: Free gold in quartz

Access: 8 miles of paved Highway (60-70), 3 miles of dirt road (fair)

Geology: The mine lies within the large N 10-20°E Shear Zone which cuts the central portion of the Plomosa Mountains. This consists of a series of closely spaced shears which have been invaded by deep formed quartz veins. These quartz veins appear to have intruded in the manner of pegmatite dikes. Strong brecciation and crinkling of the schist is found on the quartz-schist contacts. The schist trends N70W on the average, and dips variably to the northeast. The copper-gold mineralization appears to be closely affiliated with the quartz "dikes" or "veins," and is earlier than the lead-silver mineralization which seems to be largely confined to certain favorable schist beds (chlorite or hornblende schists). There is a considerable gap (erosional) between the two periods of mineralization, as evidenced by local placers. The first placers, containing gold, are followed by several feet of caliche, and then a lead placer. This is specially evident on the Splicer-Coiner claims adjacent to the Belle of Arizona on the west. The Belle of Arizona conforms to this general pattern, but belongs predominately to the gold-copper epoch. The veins here like in the Gold Nuggett, Coiner-Splicer, and Humdinger, have shot out appendages in tongues and stringer veinlets for many feet into the schist. Many of these reach from 1" to 6" in width and largely penetrate along the laminae of the schist. These, like the parent veins, carry gold and some oxidized copper minerals. The mineralized areas have considerable limonite in vugs and impregnations. In the Gold Nuggett pyrite and chalcopyrite came in below 200'. The gold is assumed to have accompanied these sulphides, but favors the pyrite. Little of the lead-silver epoch is evident in the Belle of Arizona. There is a considerable area of mineralized ground, but time did not permit an evaluation of the area, or the segregation of the more favorable zones. It was suggested that this be done before more money or work was done. Mr. Webster was furnished with a list of registered engineers in his area.

DEPARTMENT OF MINERAL RESOURCES

State of Arizona

MINE OWNER'S REPORT

Date 5-10-58

- 1. Mine: Belle of Ariz.
- 2. Location: Sec. 35 Twp. 34 Range 18W Nearest Town Quartzsite Distance 11 miles
Direction N.W. Nearest R.R. Blythe Calif. Distance 30 miles
Road Conditions 3 M. dirt road Balance H.W.
- 3. Mining District and County: Yuma Co. Plomosa mining dist.
- 4. Former Name of Mine: Belle of Ariz.
- 5. Owner: Roy B. Webster and M. F. Webster.
Address: Quartzsite Ariz. Box 59.
- 6. Operator: self.
Address:
- 7. Principal Minerals: Gold, Fine milling.
- 8. Number of Claims: Lode 7 Patented No. Unpatented.
Placer Patented Unpatented.
- 9. Type of Surrounding Terrain:

10. Geology and Mineralization:
See field engineers Report.

11. Dimension and Value of Ore Body: Too many to list from inches to feet in size. From 35.00 on a foot vein to 100.00 on smaller ones.

Please give as complete information as possible and attach copies of engineer's reports, shipment returns, maps, etc. if you wish to have them available in this Department's files for inspection by prospective lessors or buyers.

12. Ore "Blocked Out" or "In Sight" *30 ft 12 in W. in cut about same amount in tunnel*
Lots of others smaller but high grade
 Ore Probable:

13. Mine Workings—Amount and Condition:

No.	Feet	Condition
Shafts	<i>275-</i>	<i>Fair</i>
Raises		
Tunnels	<i>2 - 65-</i>	<i>Good</i>
Crosscuts		
Stopes		

14. Water Supply: *None*

15. Brief History:

16. Remarks: *about 40 tons of ore out.*

17. If Property for Sale, List Approximate Price and Terms: *\$15,000⁰⁰ unless the price of gold changes.*

18. Signature: *Ray B Webster*