



CONTACT INFORMATION

Mining Records Curator
Arizona Geological Survey
1520 West Adams St.
Phoenix, AZ 85007
602-771-1601
<http://www.azgs.az.gov>
inquiries@azgs.az.gov

The following file is part of the

Arizona Department of Mines and Mineral Resources Mining Collection

ACCESS STATEMENT

These digitized collections are accessible for purposes of education and research. We have indicated what we know about copyright and rights of privacy, publicity, or trademark. Due to the nature of archival collections, we are not always able to identify this information. We are eager to hear from any rights owners, so that we may obtain accurate information. Upon request, we will remove material from public view while we address a rights issue.

CONSTRAINTS STATEMENT

The Arizona Geological Survey does not claim to control all rights for all materials in its collection. These rights include, but are not limited to: copyright, privacy rights, and cultural protection rights. The User hereby assumes all responsibility for obtaining any rights to use the material in excess of "fair use."

The Survey makes no intellectual property claims to the products created by individual authors in the manuscript collections, except when the author deeded those rights to the Survey or when those authors were employed by the State of Arizona and created intellectual products as a function of their official duties. The Survey does maintain property rights to the physical and digital representations of the works.

QUALITY STATEMENT

The Arizona Geological Survey is not responsible for the accuracy of the records, information, or opinions that may be contained in the files. The Survey collects, catalogs, and archives data on mineral properties regardless of its views of the veracity or accuracy of those data.

01/23/97

ARIZONA DEPARTMENT OF MINES AND MINERAL RESOURCES FILE DATA

PRIMARY NAME: BEAUTY 1-7

ALTERNATE NAMES:

GILA COUNTY MILS NUMBER: 500

LOCATION: TOWNSHIP 10 N RANGE 11 E SECTION 20 QUARTER C
LATITUDE: N 34DEG 11MIN 30SEC LONGITUDE: W 111DEG 14MIN 45SEC
TOPO MAP NAME: MCDONALD MTN - 7.5 MIN

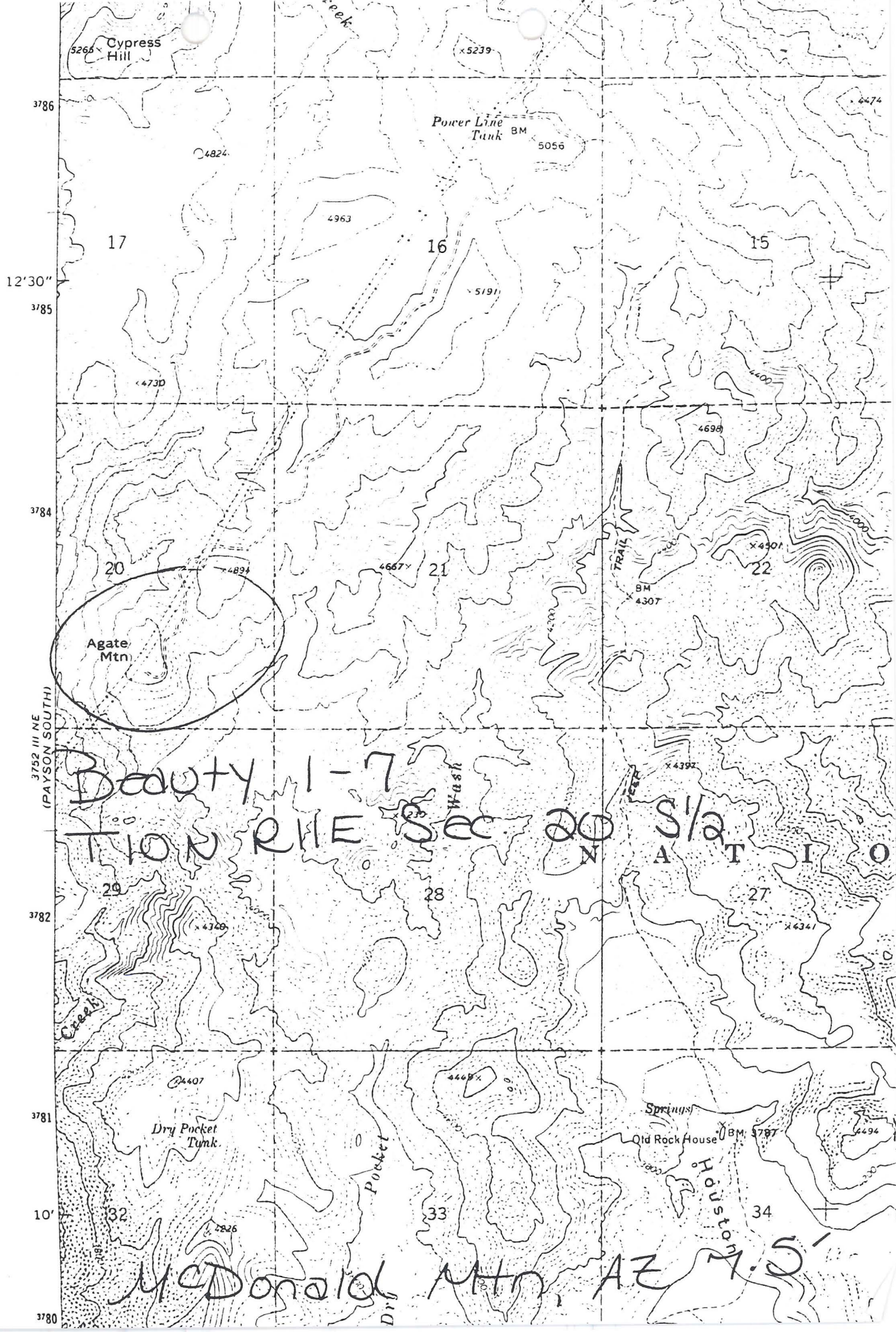
CURRENT STATUS: EXP PROSPECT

COMMODITY:

QUARTZ CRYSTAL
GEMSTONE

BIBLIOGRAPHY:

ADMMR BEAUTY 1-7 FILE
ALSO IN S2 OF SEC.



BEAUTY 1-7

GILA

Gary Phillips, General Delivery, Payson, 474-3619, called about having someone from the Department accompany him to his claims from which he hopes to mine material for the rockhound market; September 20 was chosen to visit his claims.
KAP Report 9/10/73



STATE OF ARIZONA
DEPARTMENT OF MINERAL RESOURCES
MINERAL BUILDING, FAIRGROUNDS
PHOENIX, ARIZONA 85007

October 1, 1973

To: John H. Jett, Director

From: Ken A. Phillips

Subject: Mine visit and field interview at the Beauty 1-7 with owners George and Gary Phillips, September 20, 1973.

George and Gary Phillips, with Walter Haught and John Ferguson, have located 7 lode claims on a 300 to 500 foot wide quartz dike which strikes 50° - 60° west and dips 70° - 80° north. The country rock is quartz syenite porphyry and often contains enough quartz to be classified as a porphyritic granite. The dike contains almost solely quartz with iron oxide stain near the surface. In many places quartz crystals are completely developed and often show amethyst color. The dike also contains a considerable amount of brecciated agate.

The dike can be traced on the surface for a distance of at least $3/4$ of a mile. The northwest end of the dike appears to be cut off at Houston Creek in Sec. 20, T10N R11E. The seven Beauty claims are located in Sec. 20 on the dike and extend under the power lines. There is some question as to whether the land under the power lines is open to mineral entry.

The claims are developed by shallow pits and cuts both across and along the dike. There is a good possibility that gem quality amethyst will be developed. The owners hope to mine and sell the material to wholesale and retail lapidary dealers. Mine run material should sell for \$200-\$300/ton with select pieces selling for as much as \$2.00/pound. If gem quality amethyst is developed, its price would be determined by appraisal but would likely be in the range of \$1.00-\$5.00 per carat for top quality stones.

Equipment being used in the development includes a CP Air Track, CP 600 compressor, jack hammers, jack leg, D-6 cat and numerous hand tools.

George Phillips has had considerable underground mining experience at both ASARCO's Ground Hog Mine and in the Coeur D'Alene silver mines. He was the original locator of the Prominatory uranium claims which are now involved in the litigation with Pan American Mines.

KEAP