



CONTACT INFORMATION

Mining Records Curator
Arizona Geological Survey
1520 West Adams St.
Phoenix, AZ 85007
602-771-1601
<http://www.azgs.az.gov>
inquiries@azgs.az.gov

The following file is part of the

Arizona Department of Mines and Mineral Resources Mining Collection

ACCESS STATEMENT

These digitized collections are accessible for purposes of education and research. We have indicated what we know about copyright and rights of privacy, publicity, or trademark. Due to the nature of archival collections, we are not always able to identify this information. We are eager to hear from any rights owners, so that we may obtain accurate information. Upon request, we will remove material from public view while we address a rights issue.

CONSTRAINTS STATEMENT

The Arizona Geological Survey does not claim to control all rights for all materials in its collection. These rights include, but are not limited to: copyright, privacy rights, and cultural protection rights. The User hereby assumes all responsibility for obtaining any rights to use the material in excess of "fair use."

The Survey makes no intellectual property claims to the products created by individual authors in the manuscript collections, except when the author deeded those rights to the Survey or when those authors were employed by the State of Arizona and created intellectual products as a function of their official duties. The Survey does maintain property rights to the physical and digital representations of the works.

QUALITY STATEMENT

The Arizona Geological Survey is not responsible for the accuracy of the records, information, or opinions that may be contained in the files. The Survey collects, catalogs, and archives data on mineral properties regardless of its views of the veracity or accuracy of those data.

02/12/92

ARIZONA DEPARTMENT OF MINES AND MINERAL RESOURCES FILE DATA

PRIMARY NAME: BATTLE MTN. GROUP

ALTERNATE NAMES:

GOLD CORD PATENT MS 2798

GRAHAM COUNTY MILS NUMBER: 234E

LOCATION: TOWNSHIP 8 S RANGE 22 E SECTION 20 QUARTER NE
LATITUDE: N 32DEG 43MIN 54SEC LONGITUDE: W 110DEG 06MIN 55SEC
TOPO MAP NAME: BLUE JAY PEAK - 7.5 MIN

CURRENT STATUS: EXP PROSPECT

COMMODITY:

COPPER

BIBLIOGRAPHY:

ADMMR BATTLE MTN GROUP FILE
BLM MINING DISTRICT SHEETS 768 & 769
CLAIMS EXTEND INTO SEC. 17

BATTLE MOUNTAIN GROUP

REFERENCES

GRAHAM COUNTY
CLARK DIST.
T8S R22E Sec. 20

Graham County MILS Index #234A

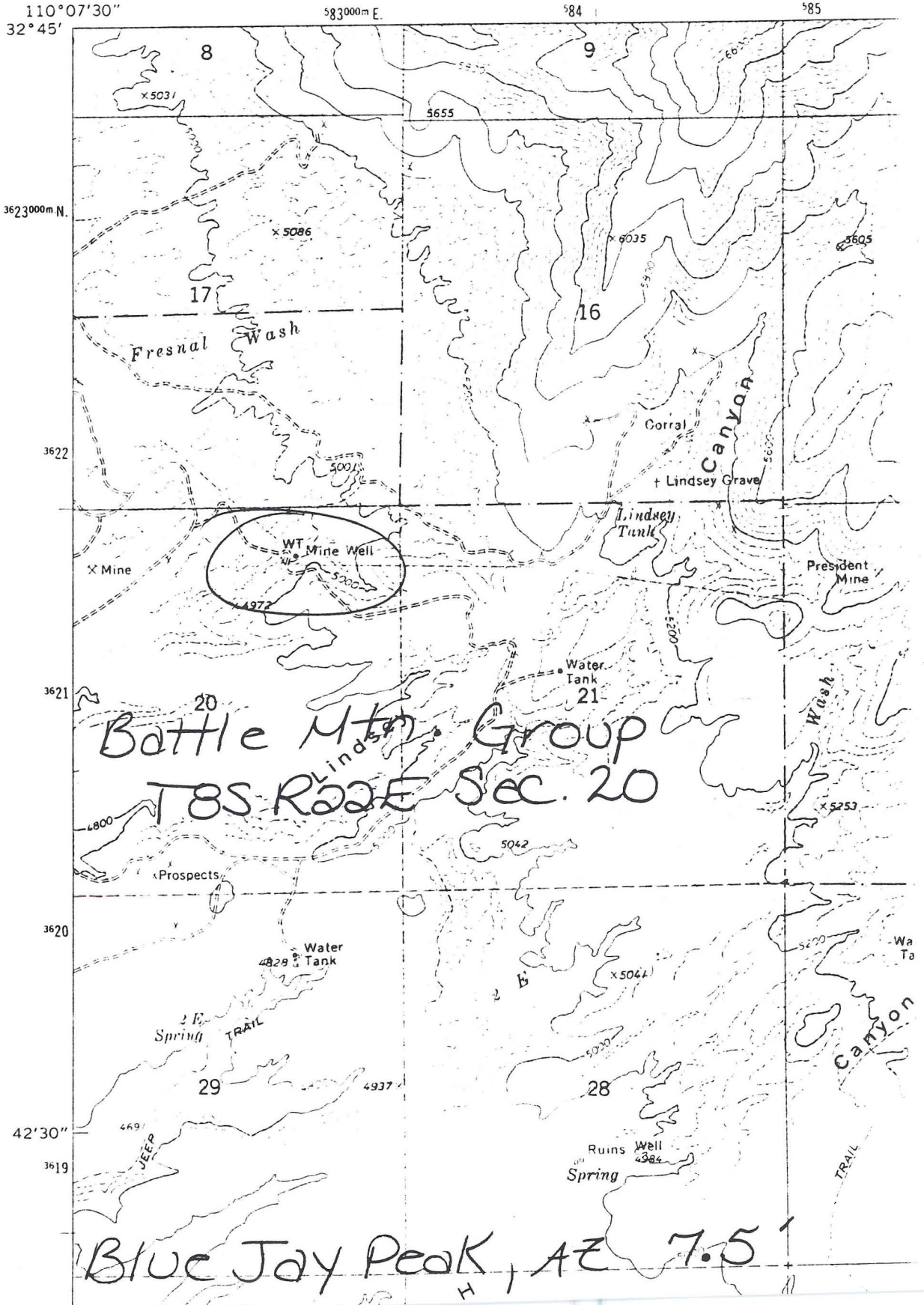
AKA: Gold Cord Patent M S 2798

BLM Mining District Sheet 768 & 769

Blue Jay Peak, AZ 7.5' Topo (included in file)

3949 1 SW
BUFORD HILL

UNITED STATES
DEPARTMENT OF THE INTERIOR
GEOLOGICAL SURVEY



DEPARTMENT OF MINERAL RESOURCES

STATE OF ARIZONA
FIELD ENGINEERS REPORT

Mine Battle Mountain Group Date April 4, 1962
District Clark District, Graham Co. Engineer Axel L. Johnson
Subject: Field Engineers Report. Information from Charles E. Stevens.

Location: Sections 17 & 20 - T. 8 S., R. 22 E., approximately 25 miles southwest of Safford. Drive Highway 70 for a distance of 16 miles. Turn left and drive about 17 miles SW on Safford-Klondyke road. Turn left on unimproved road and drive $8\frac{1}{2}$ miles to the claims.

Number of Claims: 44 unpatented claims on Federal land located in 1961.

Owners: Charles E. Stevens, Box 343, Safford, Arizona.
Paul Merrill, Safford, Arizona.

Principal Minerals: Exploration for copper.

Present Activity: None.

Geology: A geologist report was made on this property by Vance N. Bacon, Registered Geologist, 2719 E. Turney Ave., Phoenix 16, Ariz. This report recommended diamond drilling in various places on the claims to explore the ore body.

Proposed Plans: Mr. Stevens stated that he expects to start diamond drilling on the property soon. He stated that he has 2 diamond drills that he can use for this purpose

- (1) Longyear drill (leased) ---- copy. 250 ft.
 - (2) Sullivan drill (purchased) ---- copy. 550 ft.
- Both of these drills are equipped for EX core.