



CONTACT INFORMATION

Mining Records Curator
Arizona Geological Survey
1520 West Adams St.
Phoenix, AZ 85007
602-771-1601
<http://www.azgs.az.gov>
inquiries@azgs.az.gov

The following file is part of the

Arizona Department of Mines and Mineral Resources Mining Collection

ACCESS STATEMENT

These digitized collections are accessible for purposes of education and research. We have indicated what we know about copyright and rights of privacy, publicity, or trademark. Due to the nature of archival collections, we are not always able to identify this information. We are eager to hear from any rights owners, so that we may obtain accurate information. Upon request, we will remove material from public view while we address a rights issue.

CONSTRAINTS STATEMENT

The Arizona Geological Survey does not claim to control all rights for all materials in its collection. These rights include, but are not limited to: copyright, privacy rights, and cultural protection rights. The User hereby assumes all responsibility for obtaining any rights to use the material in excess of "fair use."

The Survey makes no intellectual property claims to the products created by individual authors in the manuscript collections, except when the author deeded those rights to the Survey or when those authors were employed by the State of Arizona and created intellectual products as a function of their official duties. The Survey does maintain property rights to the physical and digital representations of the works.

QUALITY STATEMENT

The Arizona Geological Survey is not responsible for the accuracy of the records, information, or opinions that may be contained in the files. The Survey collects, catalogs, and archives data on mineral properties regardless of its views of the veracity or accuracy of those data.

08/07/95

ARIZONA DEPARTMENT OF MINES AND MINERAL RESOURCES FILE DATA

PRIMARY NAME: BARIUM DEPOSIT

ALTERNATE NAMES:

MARICOPA COUNTY MILS NUMBER: 455

LOCATION: TOWNSHIP 3 N RANGE 7 W SECTION 33 QUARTER C
LATITUDE: N 33DEG 33MIN 35SEC LONGITUDE: W 112DEG 58MIN 59SEC
TOPO MAP NAME: BELMONT MTS - 15 MIN

CURRENT STATUS: UNKNOWN

COMMODITY:

BARIUM WITHERITE

BIBLIOGRAPHY:

SEE ADMMR ARIZONA BARITE FILE, LIST OF
BARITE PROPERTIES P. 1
ADMMR BARIUM DEPOSIT FILE

BARIUM DEPOSIT

REFERENCES

MARICOPA COUNTY
VULTURE DIST.
T3N R7W Sec. 33 C

Maricopa County MILS Index #455

Arizona Barite (file)

Belmont Mtn., AZ 15' Topo (included in file)

BARIUM DEPOSIT

MARICOPA COUNTY

KAP WR 5/21/82: Discussed a "lost mine" reference in our file known as the Barium Deposit with Bob Bissel of Sunrise Technology. The occurrence is in western Maricopa County and is reported to have shipped witherite. Its exact location is not known. Mr. Bissel is interested in barium occurrences and is going to scout the region of the occurrence.

24 February 1942

Mr. David H. Bales,
County Assessor, Yavapai County,
Prescott, Arizona.

My dear Mr. Bales:

I am enclosing herewith a copy of mine owner's report covering your deposit of witherite located in the Vulture Mining District, Yavapai County, Arizona, which has been placed in our files.

With best wishes, I am

Yours very truly,

Charles F. Willis,
Chairman, Board of Governors

CFW-jrf
encl.

cc-Frank Kramer, Wickenburg

5 February 1942

Mr. Frank Kramer,
Wickenburg, Arizona.

My dear Mr. Kramer:

Mr. F.F. Schalmo of the Office of Production Management, Phoenix, Arizona, has referred your letter of January 27 to this department with the request that we obtain all information possible on the Witherite deposit located 20 miles NW of Dixie Station.

I am enclosing herewith a blank mine owners report, which I should suggest that you fill out (or have filled out) in detail and return to this office so that information may be available concerning this deposit. I shall appreciate it if you will advise me as to the quantity available, facilities for production, etc.

Thanking you in advance, and with best wishes, I am

Yours very truly,

Charles F. Willis
Chairman, Board of Governors

CFW-jrf
encl.

DEPARTMENT OF MINERAL RESOURCES

State of Arizona

MINE OWNER'S REPORT

Date: February 10, 1942

1. Mine: ☒ BARIUM DEPOSIT
2. Location: 20 miles from Dixie, Arizona.
3. Mining District & County: Vulture Mining District, Maricopa County, Arizona.
4. Former Name:
5. Owner: ☒ David H. Bales
6. Address (Owner): Yavapai County Assessor, Prescott, Arizona.
7. Operator:
8. Address (Operator):
9. President, Owning Co:
- 9A. President, Operating Co:
10. Gen. Mgr:
14. Principal Minerals: ☒ Witherite
11. Mine Supt:
15. Production Rate: Carload a day if working.
12. Mill Supt:
16. Mill - Type & Cap:
13. Men Employed:
17. Power - Amt. & Type:
18. Operations - Present:
19. Operations - Planned:
20. Number Claims, Title, etc: One claim.
21. Description - Topography & Geography: Low country about 1200 feet above sea level. Mine lays at foot of volcanic mountain.
22. Mine Workings - Amt. & Condition: Open Cut.

(over)

FEBRUARY 4, 1958

Received a reply from Mr. Biles
225 So Cortez St.
Prescott, Arizona

No mention of this claim was made in his letter.

He did mention Pocahontas in Eureka District &
Waters Claim On the Santa Maria River

WITHERITE (Bsrrium)

KRAMER, Frank
Wickenburg, Arizona

1-27-1942 Wrote Mr. Schalmo, OPM, that there is a large
deposit of Witherite about 20 miles NW of Dixie Station on
the SP Railroad. Several cars shipped to Cal. in 1937.

2-5-1942 ASKED FOR M. O. REPORT.

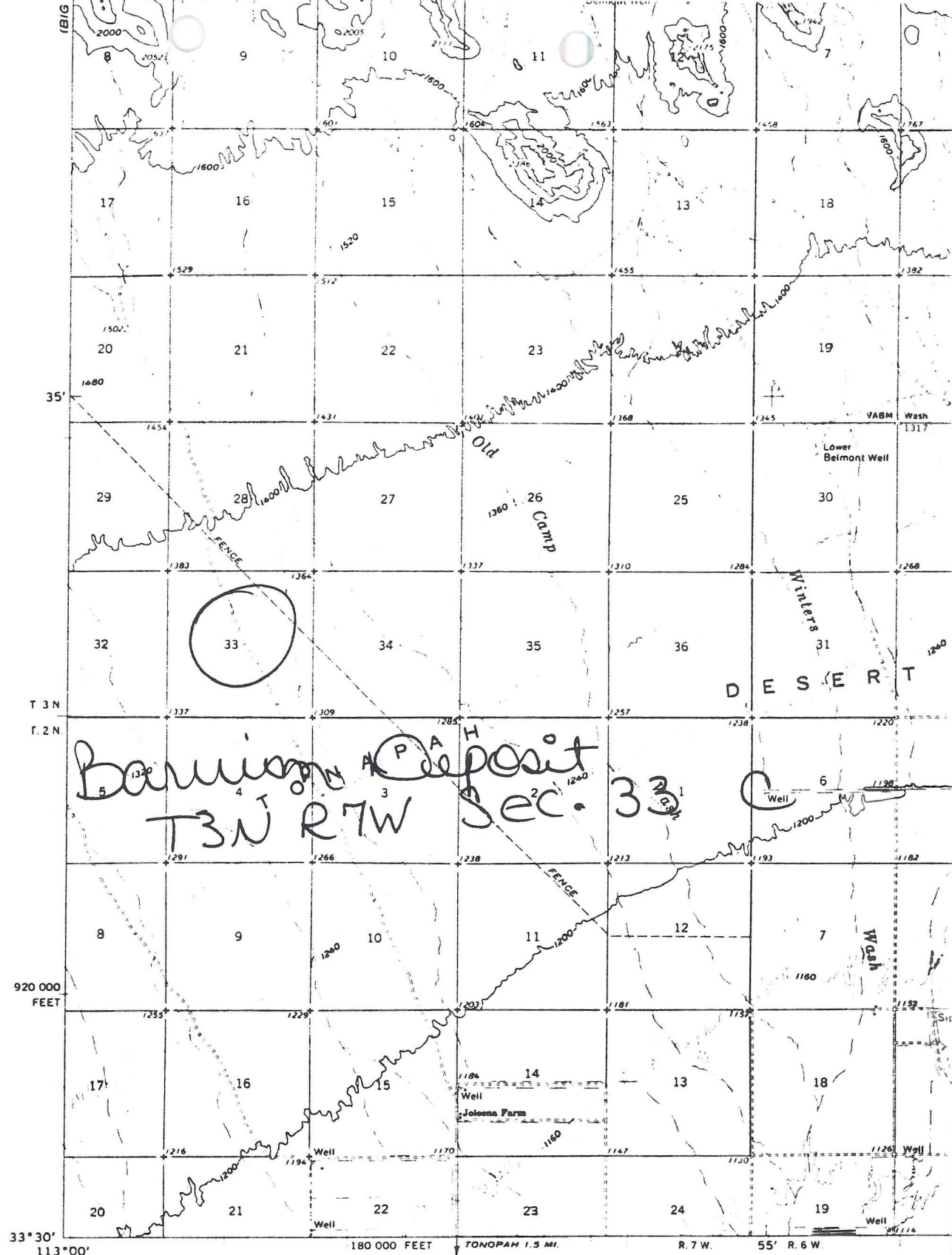
Wickenburg, Ariz.
Jan. 27th - 42.

Dear Sir. There at 20 miles
N. West of Dixie, station on S.P.R.
is a large deposit of Witherite.
Several car of it was shipped
way to Cal. in 1937.

Very truly

Yours

Frank Kramer,



(SADDLE MTN.)

Mapped, edited, and published by the Geological Survey

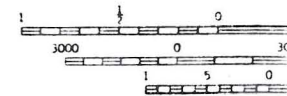
Control by USGS and USC&GS

Topography by photogrammetric methods from aerial photographs taken 1951 and 1960 Field checked 1962

Polyconic projection. 1927 North American datum
10,000-foot grid based on Arizona coordinate system, central zone
1000-meter Universal Transverse Mercator grid ticks, zone 12, shown in blue



APPROXIMATE MEAN DECLINATION, 1962



Belmont Mtns, Az 15'

THIS
FOR SALE BY U.S. G.
A FOLDER DES.

MINE AND PROSPECT FIELD VISIT DATA SUMMARY

COMMODITIES Witherite (Barium Carbonate)? Barite

MILS ID No. 455 Date May 13, 1982

Engineers Ken Phillips and Nyal Niemuth

Mine NAME: Barium Deposit Other NAMES Biles Witherite Mine

Directions: Location UNKNOWN - ADMR Barium Deposit file states location
20 miles NW of Dixie station on the Southern Pacific Railroad.

Dixie is located in Sec. 10, T1S R5W. The location for the deposit (and later given in the USBM MILS) is Sec. 33, T3N R7W which is exactly 20 miles in a N45°W direction. That location appears to have been determined by scaling off the map as neither the geology or the topography appear reasonable. No effort was made to field check the location due to the large amount of field time which would likely be consumed.

The scant file data available and reported production has been brought to the attention of two independent barite prospectors who will try to find the location on the ground. Arial reconnaissance may help.