



CONTACT INFORMATION

Mining Records Curator
Arizona Geological Survey
1520 West Adams St.
Phoenix, AZ 85007
602-771-1601
<http://www.azgs.az.gov>
inquiries@azgs.az.gov

The following file is part of the

Arizona Department of Mines and Mineral Resources Mining Collection

ACCESS STATEMENT

These digitized collections are accessible for purposes of education and research. We have indicated what we know about copyright and rights of privacy, publicity, or trademark. Due to the nature of archival collections, we are not always able to identify this information. We are eager to hear from any rights owners, so that we may obtain accurate information. Upon request, we will remove material from public view while we address a rights issue.

CONSTRAINTS STATEMENT

The Arizona Geological Survey does not claim to control all rights for all materials in its collection. These rights include, but are not limited to: copyright, privacy rights, and cultural protection rights. The User hereby assumes all responsibility for obtaining any rights to use the material in excess of "fair use."

The Survey makes no intellectual property claims to the products created by individual authors in the manuscript collections, except when the author deeded those rights to the Survey or when those authors were employed by the State of Arizona and created intellectual products as a function of their official duties. The Survey does maintain property rights to the physical and digital representations of the works.

QUALITY STATEMENT

The Arizona Geological Survey is not responsible for the accuracy of the records, information, or opinions that may be contained in the files. The Survey collects, catalogs, and archives data on mineral properties regardless of its views of the veracity or accuracy of those data.

01/14/97

ARIZONA DEPARTMENT OF MINES AND MINERAL RESOURCES FILE DATA

PRIMARY NAME: BAR COPPER MINING CO. PROPERTY

ALTERNATE NAMES:

HARRIS COPPER CO. PROPERTY

YAVAPAI COUNTY MILS NUMBER: 868

LOCATION: TOWNSHIP 8 N RANGE 2 E SECTION 9 QUARTER S2
LATITUDE: N 34DEG 03MIN 00SEC LONGITUDE: W 112DEG 09MIN 30SEC
TOPO MAP NAME: BLACK CANYON CITY - 7.5 MIN

CURRENT STATUS: EXP PROSPECT

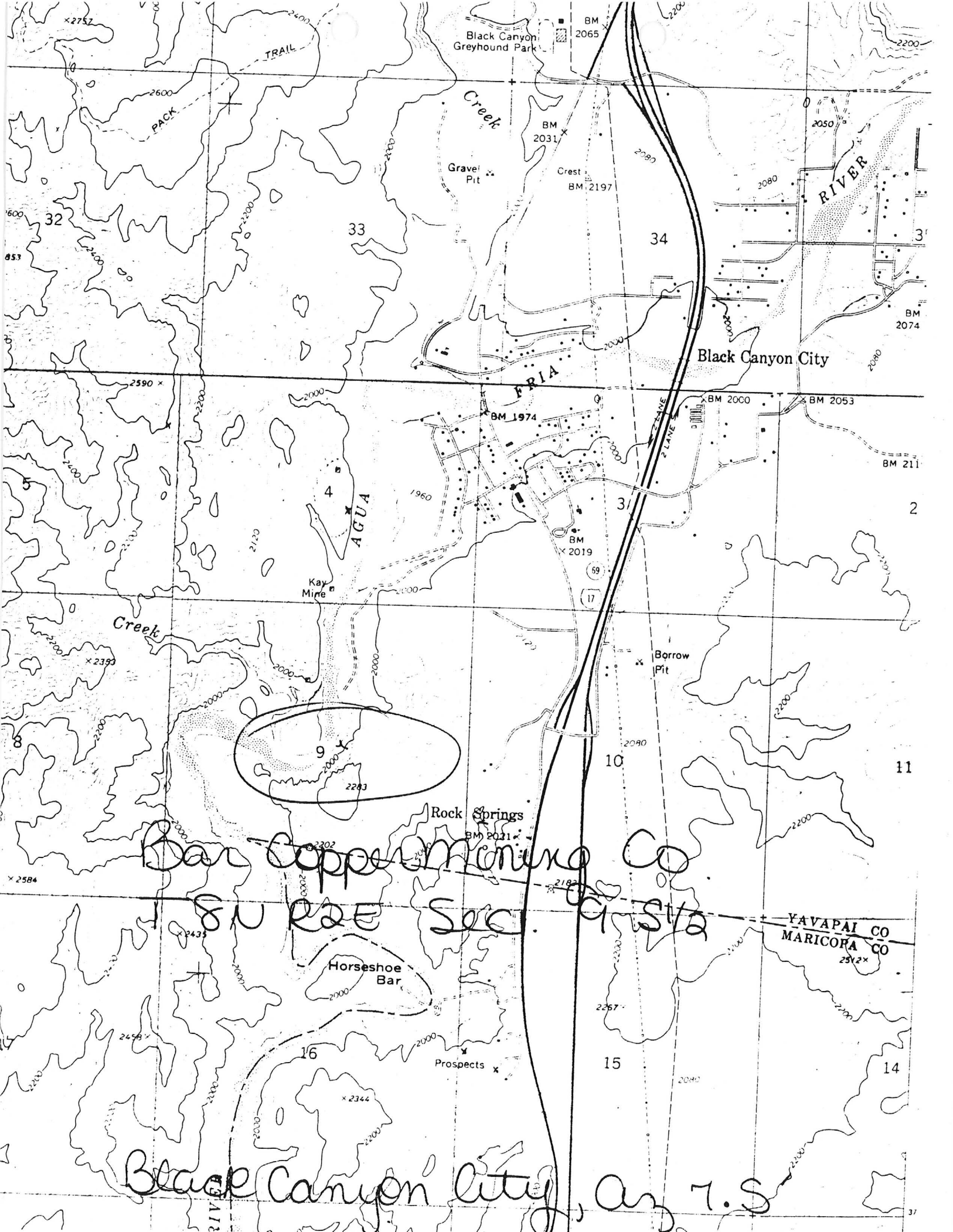
COMMODITY:

AG

AU

BIBLIOGRAPHY:

ADMMR BAR COPPER MINING CO. FILE
LINDGREN, W. ORE DEPTS JEROME & BRADSHAW MTNS
QUADS USGS BULL 782 1926 P 155



Black Canyon Greyhound Park

BM 2065

BM 2031

Crest BM 2197

BM 2074

Black Canyon City

BM 2000

BM 2053

BM 211

BM 1974

BM 2019

69

17

Borrow Pit

11

Rock Springs

BM 2021

Bar Copper Mining Co

SU R2E Sec. 9 S12

YAVAPAI CO
MARICOPA CO

Horseshoe Bar

Prospects

Black Canyon City, Az 7.S

May 27, 1957

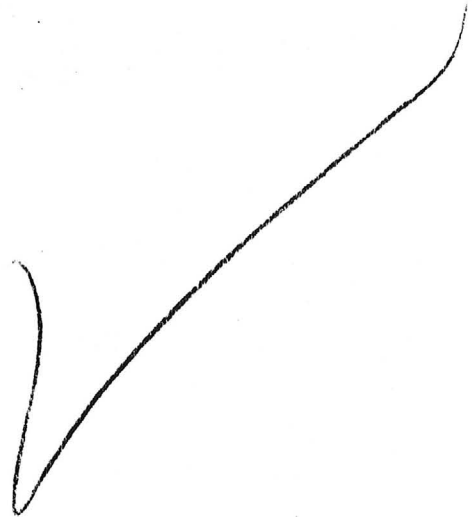
BAR COPPER MINING CO. PROP. YAVAPAI COUNTY

No information on this property. - Idle.

MARK GEMMILL

Attach to Bar Copper ^{Mining} Co.

769



I N D E X .

	Page.
Situation	1
Roads	1
Water	1
Claims	1
Topography	2
Geology and Mineralogy	2
Croppings	4
Description of Workings	4
Copper Bar Claim	4
Pinto' Claim	5
Dreadhaught No. 1	6
Buttgroup Claim	6
Description of Sampling	7
Result of Assays	8
Conclusions and Recommendations	8

REPORT
on
THE BAR COPPER MINING COMPANY
PROPERTY.

- - -

SITUATION

The property is situated in the Tip Top Mining District, Yavapai County, Arizona, on the eastern slope of the Bradshaw Range of mountains, fifty miles north of Phoenix and about equal distance south from Prescott, and on the county wagon road between the two mentioned places, one mile from Canon post office.

ROADS

The county roads from both directions are in excellent condition for hauling.

WATER

The Aqua Fria River flows past the claims, and affords water supply the year round. A well at the camp supplies water for domestic purposes.

CLAIMS

The property comprises fifteen claims.

and the titles are held by the performance of annual assessment work.

The claims on the north adjoin the Kay Copper Company and Harris Copper Company properties, and are named as follows:

Dreadnaught No. 1 to 8 inclusive,
Pinto, Mars, Copper Lawn, Copper Bar,
Battleship, Lone Star, Buttercup.

TOPOGRAPHY

The claims cover an area in the foot hills at the eastern slope of the Bradshaw range, which is sierrated, with short deep cut canons and precipitous escarpments, which slope acutely to the Aqua Fria River.

Geology

and

MINERALOGY

The whole area almost completely covers schist formation, with detached sections of diorite, from which some of the schists have originally emanated. Although occasionally they suggest alteration from sedimentary and can therefore be considered of several lithological varieties.

Some of the schists are interstratified and in perfect stratigraphical sequence and alignment with a direct North-south course.

Near the surface the schist is occasionally contorted and wavy with foliated easements and warpings.

Where this condition of the schist is accompanied by considerable ferruginous oxidization, it is generally found to be copper bearing, and is discernable by fresh fracturing at the surface, a description of which is more fully explained under the head of workings. Occasionally in the schists are found prominent rugged outcrops of dark brown quartzite, which invariably carries at contact or in close proximity evidences of copper carbonates.

The green chloritic schists apparently carry no mineralization whatever.

There are also fissures in the schist as exemplified on the Pinto Claim. These fissures have been charged with sulphides, mainly iron pyrites and

probably some chalcopyrites. The
mundio contents have been absolutely
oxidized to a powder and where work-
ings have penetrated these fissures
they show residual deposition of al-
most pure sulphur.

CROPPINGS

The croppings are generally notice-
able and traceable by the colorations
resultant from the different stages
of oxidization, and are particularly
distinguishable on the Buttercup Claim,
by the ragged combs and projections
the intense red and yellow oxidization,
and the presence of copper carbonates.

The croppings on this claim stand in
relief owing to the previously explain-
ed conditions, and are fully fifty feet
in width, and are prominently visible
and traceable for nearly the full
length of the claim.

DESCRIPTION OF WORKINGS.

COPPER BAR CLAIM.

Sixteen foot vertical shaft in quartz
and schist, showing very strong in

brown peroxide of iron and limonite, with specks of sulphides appearing in bottom. These alternating bands of quartz and schist, have a superficial width of about twenty feet.

Slightly to the west from this working is a prominent and rugged cropping of brown quartzite.

PINTO CLAIM.

The course of the river cross-sections the schist, forming them into almost vertical escarpments, and affording an excellent illustration of their sequence.

The Mineralized schist is about forty feet in width, is intensely charged with varying conditions of iron oxides, and shows some slight copper carbonates.

Chloritic schist exists on both sides of the oxidized schist. In the latter a tunnel courses Northwest for sixty feet and is all in intensely oxidized ground, the brown red and yellow iron oxides and Pyrolusite, a black earthy

manganese oxide. Another tunnel 100 feet to west, course Northeast and 40 feet in length exhibits identical conditions.

DREADNAUGHT NO. 1

Open cut in schist, underneath prominent brown quartzite outcrop, showing slight copper carbonate contents; similar croppings are also in evidence 100 feet higher on hill.

BUTTERCUP CLAIM

Open cut, face north, in schist and diorite, ferruginous stain and manganese oxide. Schist and blocky diorite coursing north.

Open cut further up hill, half of face in blue schist with white quartz seams, and the other half is highly charged with limonite.

Upper open cut 10 feet in width, in vertical schist, highly mineralized with red, brown and yellow iron oxides, interstratified with quartz seams, and

exhibiting copper carbonates.

At apex of hill, 100 feet higher than open cuts, copper carbonates are in evidence for fully fifty feet in width across the highly oxidized schist, and is of excellent appearance.

The other claims have only possessory work done upon them.

DESCRIPTION OF SAMPLING.

PINTO CLAIM.

- Sample No. 1 60 feet tunnel.
3 feet across roof 10 feet from portal
red, yellow and black oxidized material.
- No. 2 42" across roof 35 feet from portal
similar material.
- No. 3 3 feet across face, black oxidized
material.

DREADNAUGHT NO. 2.

- No. 4 3 feet carbonate ore face of open out

in canon. Schist face very much warped
and flexured, heavily charged with
brown and yellow ferruginous oxides.

BUTTERCUP CLAIM.

- No. 5 Highly oxidized schist with quartz seams
and copper carbonates.
- No. 6 Groppings of schist above open cuts,
containing copper carbonates.

RESULT OF ASSAYS.

No.	Silver	Value @ 70¢ oz.	Gold	Value	Total Value	Copper
1	1.00	.70	trace			no
3	1.50	1.05	trace			trace
3	3.00	1.40	.08	1.60	3.00	no
4	.20	.14	.02	.40	.54	trace
5	.20	.14	.02	.40	.54	trace
6	trace		trace			trace

Crystals in separate sample are Pyrite.

CONCLUSIONS AND RECOMMENDATIONS.

As will be observed, the copper contents on the surface is just recognizable, but this is the general condition in this area. The one property in the district that has produced and shipped high grade ore had similar conditions on the surface, only a very slight and very limited extent of copper carbonates in evidence.

The condition of the schist is certainly receptive for copper mineralization, and wherever it is intensely charged with iron oxides with the addition of copper carbonates, it is the exercise of sound judgment to pursue development to depth.

In my opinion certain positions of the ground warrants work being done upon it. The fissures on the Pinto Claim are of rather odd occurrence and warrant further work to demonstrate their nature, extent and value. But it is upon the Buttercup Claim that I recom-

mend the main effort at development to be exercised, for the schism is exceedingly favorable in appearance, has strong width and continuity longitudinally for full length of claim, with the presence of visible copper carbonates, a prospect shaft sunk on a point where the most favorable conditions exist, would economically and efficiently disclose the nature and future possibilities. Work of this nature, under intelligent direction, I can recommend expenditure of capital for carrying out the prospective work as outlined. The disclosures from this preliminary work will suggest the manner of further exploitation.

(Signed) W. E. DEFTY,

Mining Engineer.

Dated at Phoenix, Arizona,

January 24, 1917.