



## **CONTACT INFORMATION**

Mining Records Curator  
Arizona Geological Survey  
1520 West Adams St.  
Phoenix, AZ 85007  
602-771-1601  
<http://www.azgs.az.gov>  
[inquiries@azgs.az.gov](mailto:inquiries@azgs.az.gov)

The following file is part of the

Arizona Department of Mines and Mineral Resources Mining Collection

## **ACCESS STATEMENT**

These digitized collections are accessible for purposes of education and research. We have indicated what we know about copyright and rights of privacy, publicity, or trademark. Due to the nature of archival collections, we are not always able to identify this information. We are eager to hear from any rights owners, so that we may obtain accurate information. Upon request, we will remove material from public view while we address a rights issue.

## **CONSTRAINTS STATEMENT**

The Arizona Geological Survey does not claim to control all rights for all materials in its collection. These rights include, but are not limited to: copyright, privacy rights, and cultural protection rights. The User hereby assumes all responsibility for obtaining any rights to use the material in excess of "fair use."

The Survey makes no intellectual property claims to the products created by individual authors in the manuscript collections, except when the author deeded those rights to the Survey or when those authors were employed by the State of Arizona and created intellectual products as a function of their official duties. The Survey does maintain property rights to the physical and digital representations of the works.

## **QUALITY STATEMENT**

The Arizona Geological Survey is not responsible for the accuracy of the records, information, or opinions that may be contained in the files. The Survey collects, catalogs, and archives data on mineral properties regardless of its views of the veracity or accuracy of those data.

01/15/97

ARIZONA DEPARTMENT OF MINES AND MINERAL RESOURCES FILE DATA

PRIMARY NAME: BARBARA

ALTERNATE NAMES:

YAVAPAI COUNTY MILS NUMBER: 1254B

LOCATION: TOWNSHIP 11 N RANGE 1 W SECTION 3 QUARTER NW  
LATITUDE: N 34DEG 19MIN 40SEC LONGITUDE: W 112DEG 21MIN 23SEC  
TOPO MAP NAME: BATTLE FLAT - 7.5 MIN

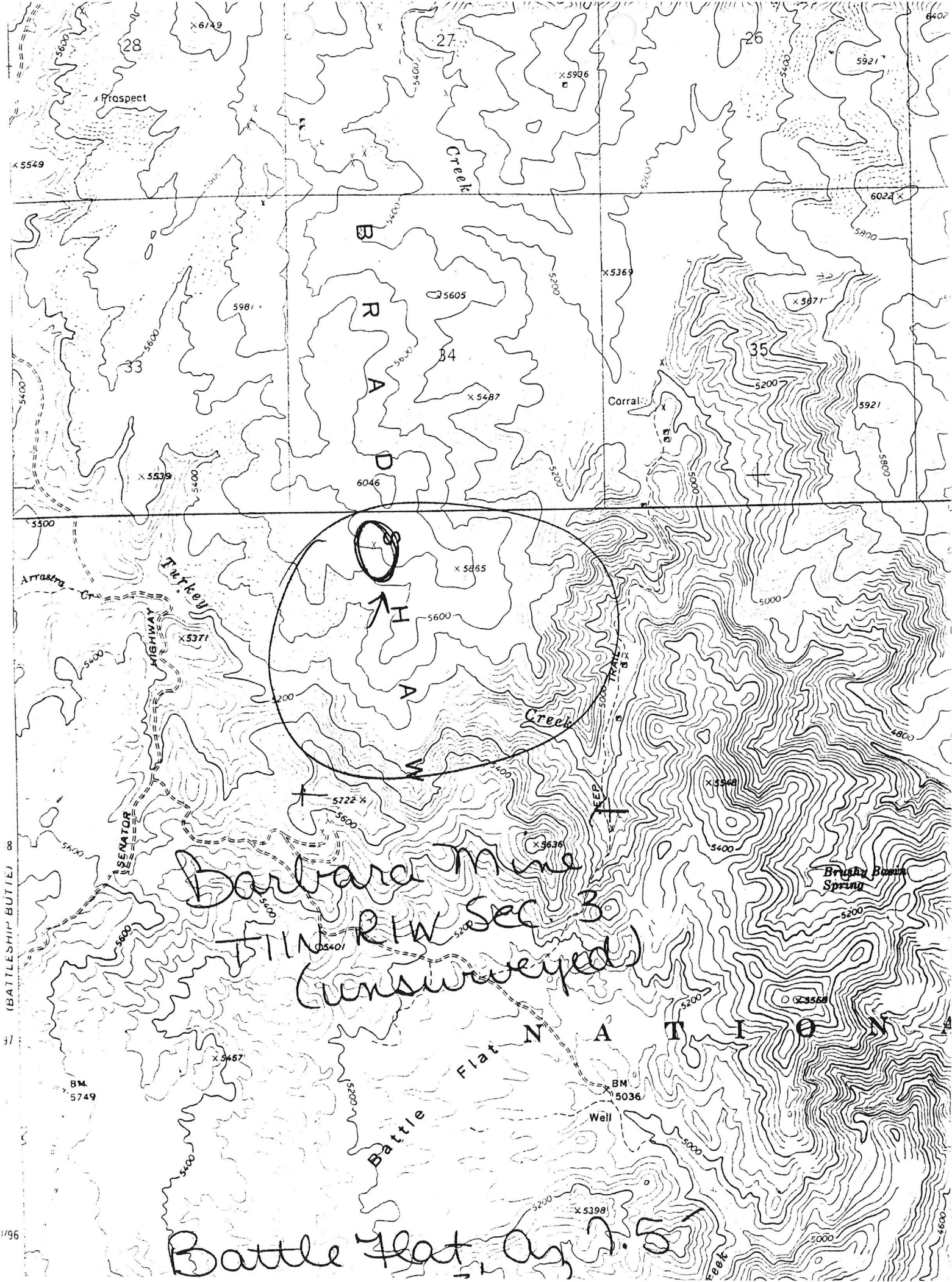
CURRENT STATUS: EXP PROSPECT

COMMODITY:

SILVER  
LEAD

BIBLIOGRAPHY:

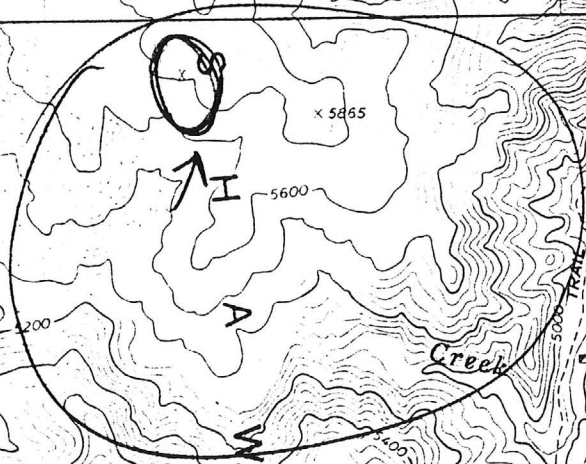
ADMMR BARBARA MINE FILE  
COE AND VAN LOO LAND STATUS MAP



Prospect

B  
R  
A  
D

Corral



Barbara Mine  
TIN R/W Sec 3  
(unsurveyed)

(BATTLESHIP BUTTE) 8

31

1996

Battle Flat National Monument

Battle Flat, Ariz. S. 51

Brushy Basin Spring

Well

BARBARA MINE

Yavapai County  
Bradshaw District

See: RIPPEY, John and Tom (card)

---

KAP WR 1-11-80: John and Tom Rippey, % Odessa Rippey, Bagdad Star Route, Hillside, Arizona 86321, reported they are looking at a silver-lead vein on their Barbara unpatented mine at Battle Flat, Yavapai County, Bradshaw District. They have had two samples of vein material assayed. The results were 110 tr.oz/ton silver and 159 tr.oz/ton silver but the samples were probably not representative.

---

RRB/WR 1/10/80 - Thomas & John Rippey were in seeking help in setting up flowsheet for their ore. Barbara Mine assays showed 800 oz. silver and .3 oz. Gold. Ken Phillips suggested we help them take good samples and set up trip for us on the 21st.

---

RRB WR 1/28/80: Tom Johnson associated with the Rippeys in the Barbara Mine was in. Made appointment for Ken and I to visit claims Thursday, to help them sample.

---

RRB WR 1/31/80: Visited Barbara Mine near Mayer with Ken, to assist Tom Rippey evaluate the property. Took chip sample across main vein and a high grade sample from a narrow vein in a cut. Results of assay have not been reported yet. Can be reached through Robert Rippey, 936-6376, in Phoenix. Ken is writing report.

---

KAP WR 1/31/80: In the company of Dick Beard, traveled to Barbara Mine, Yavapai County. (A separate report has been written)

---

DEPARTMENT OF MINERAL RESOURCES

STATE OF ARIZONA  
FIELD ENGINEERS REPORT

Mine BARBARA Date January 31, 1980

District Bradshaw (Yavapai County) Engineer Ken A. Phillips  
Richard R. Beard

Subject: Visit to Barbara unpatented claim in the company of Tom Rippey

Location: Section 3, T11N, R1W, Unsurveyed.

The south end line of the Barbara corresponds with the north end line of the Kendall patent.

Minerals: Silver- lead (?)

Description: In the company of Tom Rippey, who is considering purchasing the claim, we visited the Barbara unpatented lode mining claim in the Bradshaw District, Yavapai County.

The property consists of a single claim on a north striking group of vein like structures in Bradshaw Granite. The veinlike structures consist of altered and silicified fractured granite and narrow quartz stringers.

Silver chlorides and sulfides occur in a 6" quartz stringer vein along the foot wall of the major vein structure at the south end line of the claim. The mineralized quartz was exposed in a shallow prospect pit. A select sample (#4) was taken of the metal bearing portion of the stringer.

Samples: Four samples were taken for assay.

Sample #1. Across foot wall of vein at the surface at location monument. Channel sample from bottom of trench. Medium grained altered granite. Sample length 6.0'.

Sample #2. Across surface of vein at location monument. Chip sample, medium grained fractured silicified altered granite with numerous 1/2" wide quartz stringers. Sample length 5.5'.

Sample #3. Across hanging wall of vein on the surface of vein at location monument. Channel sample from bottom of trench. Medium grained altered granite. Sample length 4.0'.

Sample #4. Select sample across of metal bearing portion of quartz stringer in pit where south end line crosses vein.

Results: The results will be added when available.

Three previous assays, reported to be from the property, reported to run over 100 tr.oz/ton Ag. The sample locations and descriptions were not known.

RRB:mw

cc: DMR Tucson