



## **CONTACT INFORMATION**

Mining Records Curator  
Arizona Geological Survey  
1520 West Adams St.  
Phoenix, AZ 85007  
602-771-1601  
<http://www.azgs.az.gov>  
[inquiries@azgs.az.gov](mailto:inquiries@azgs.az.gov)

The following file is part of the

Arizona Department of Mines and Mineral Resources Mining Collection

## **ACCESS STATEMENT**

These digitized collections are accessible for purposes of education and research. We have indicated what we know about copyright and rights of privacy, publicity, or trademark. Due to the nature of archival collections, we are not always able to identify this information. We are eager to hear from any rights owners, so that we may obtain accurate information. Upon request, we will remove material from public view while we address a rights issue.

## **CONSTRAINTS STATEMENT**

The Arizona Geological Survey does not claim to control all rights for all materials in its collection. These rights include, but are not limited to: copyright, privacy rights, and cultural protection rights. The User hereby assumes all responsibility for obtaining any rights to use the material in excess of "fair use."

The Survey makes no intellectual property claims to the products created by individual authors in the manuscript collections, except when the author deeded those rights to the Survey or when those authors were employed by the State of Arizona and created intellectual products as a function of their official duties. The Survey does maintain property rights to the physical and digital representations of the works.

## **QUALITY STATEMENT**

The Arizona Geological Survey is not responsible for the accuracy of the records, information, or opinions that may be contained in the files. The Survey collects, catalogs, and archives data on mineral properties regardless of its views of the veracity or accuracy of those data.

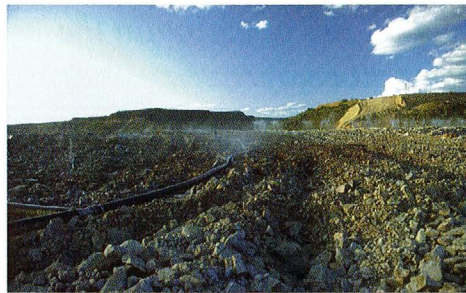
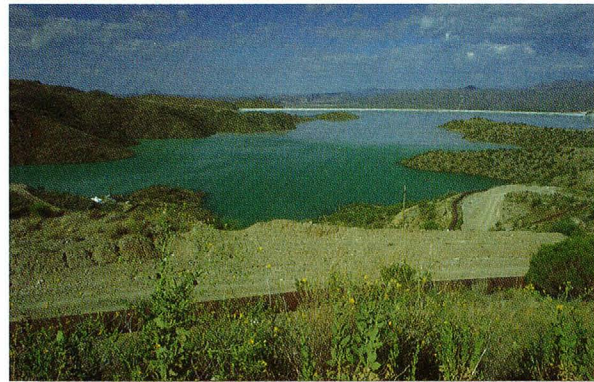


## ... Solid Economic Benefits

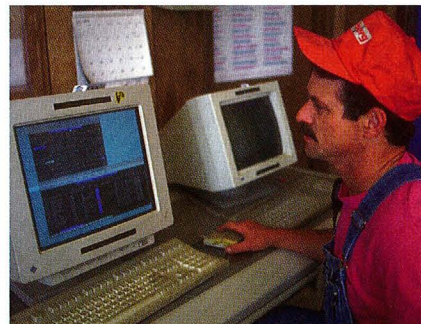


240-ton haul trucks are used for efficiency

Water from tailings is recycled and reused



Low-cost copper leaching



Computer-based mine planning

## Local Economic Impact of Cyprus Bagdad

In 1996, Cyprus Bagdad's operation translated into these significant direct and indirect\* local economic impacts for Yavapai County:

### Positive Impact on Yavapai County

- More than \$5.5 million in sales taxes.
- More than \$6.9 million in property taxes.
- \$1.1 million in charitable giving.
- More than \$55.2 million in wage and salary household income.
- Total direct and indirect dollar impact in 1996—more than \$61.2 million.

### Positive Impact on Arizona

In 1996, the statewide economic impact of Cyprus Bagdad on Arizona was \$156 million.

All this economic activity adds up to lower property taxes for homeowners, better county services, better schools, and a more vibrant local economy.



100 Main Street, Bagdad, Arizona 86321  
Phone (520) 643-2241

Cover photos, top to bottom: Golf near Prescott; water testing at Cyprus Bagdad to ensure environmental compliance; Yavapai County Courthouse grounds.

## Picture-Perfect Partners



## Cyprus Bagdad: Partners for Progress with Yavapai County

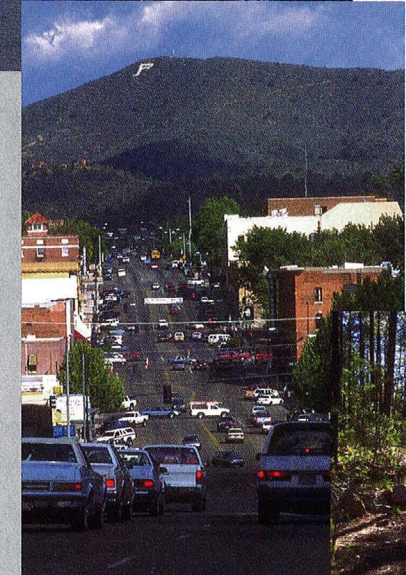
## Picture-Perfect Lifestyle ...



Sharlot Hall Museum



Convenient local shopping



Overlooking downtown Prescott; nearby forest trail



Good schools benefit from tax revenues



## Partners: Working Together We Can Do Good Things

Here in north central Arizona, it takes partners working together to maintain the unique quality of life and lifestyle we all enjoy.



Shoppers enjoy Prescott stores

Our communities are great places to live and work. They feature fine schools, bright, convenient places to shop, and good local government.

Cyprus Bagdad, located in western Yavapai County, is a state-of-the-art copper and molybdenum mine, providing high-paying jobs and positive economic benefits.

We make a solid contribution to the quality of life in local communities. When you think of us and the ways we relate to local communities in Yavapai County, we'd like you to visualize picture-perfect partners.

At Cyprus Bagdad, copper- and molybdenum-bearing ore is mined. Copper cathodes are produced by the low-cost solvent extraction/electrowinning method and copper concentrate is shipped to Cyprus Miami for smelting and refining.

These two minerals—copper and molybdenum—are at the base of many of the comforts and conveniences we enjoy today. Copper is used widely in production of appliances, computers, vehicles, and residential and telephone wiring. Moly is used in lubricants, in jet engine parts, and in the alloying of steel. From the family car to the space shuttle, copper and moly help move our lives to higher levels.

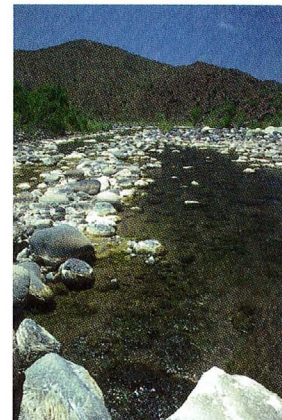


Maintenance shop worker at Cyprus Bagdad

## Environmental Action

The unique beauty of this area contributes much to our quality of life, and we have a corporate environmental policy designed to maintain that quality. At Cyprus Bagdad, we've turned our environmental policy into action in these ways:

- We conduct scientific studies prior to mining to be certain that our work will not result in adverse effects to ground and surface water, grazing lands or wildlife.



- Located just a quarter-mile away from the mine, the Bridle Creek Wildlife Enhancement Area is a favorite nesting, breeding, and feeding area for wildlife, including mule deer, rabbits, frogs, and the occasional bobcat or coyote.
- The site was honored in 1995 with a "Wildlife

Enhancement Award" from the Wildlife Habitat Enhancement Council of Silver Spring, MD.

- All water which drains from areas affected by mining must meet clean water standards. We regularly sample our water to ensure that appropriate standards are met.

At Cyprus Bagdad, we spent more than \$10 million in 1996 for environmental protection programs.

## Economic Impact

When you look at Cyprus Bagdad from an economic standpoint, the positive effect on our communities is significant.

Cyprus Bagdad currently creates 483 direct jobs with average earnings of more than \$40,900 a year. The average annual earnings of all industries in Yavapai County is a little more than \$20,121, so Cyprus Bagdad creates jobs with wages more than twice as high.

## Purchasing Power

Cyprus Bagdad's operations also create indirect jobs. The purchasing power of our employees and those in related support businesses creates jobs in the leisure and recreation industry, hospitals, schools, and at retail stores.

Of the jobs that exist in Yavapai County in 1996, 2,746 of them (or 6.9 percent) came, directly or indirectly,\* from the Cyprus Bagdad operation.

At \$40,900 average annual salary of Cyprus Bagdad employees is more than twice the Yavapai County average of \$20,121.



Our local communities need to retain high paying jobs like those at Cyprus Bagdad because of the positive impact they have on all of us.

We are in a highly competitive marketplace. In the copper industry, Cyprus Bagdad is up against vigorous global competition. We've invested millions of dollars for



Large capacity haul truck and loader

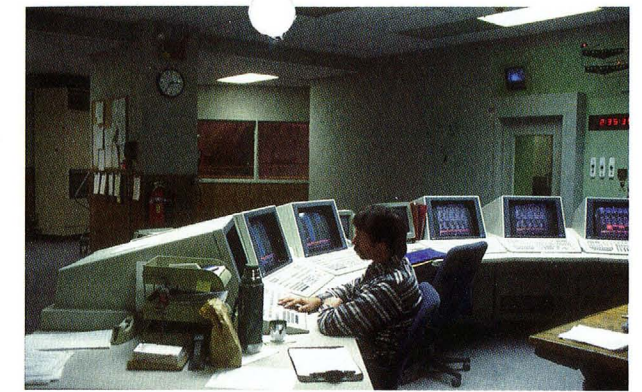
greater efficiency to meet the competitive challenge. In 1996, Cyprus Bagdad invested more than \$28.1 million for state-of-the-art technology

and equipment, materials, and services purchased in Yavapai County. Our parent company, Cyprus Climax Metals, based in Tempe, invested more than \$340 million in Arizona for capital expenditures, equipment, materials and services in 1996.

## Versatility

Employees at Cyprus Bagdad are well educated and cross-trained for on-the-job versatility. Our pay system rewards them for learning and maintaining a number of skills and taking responsibility for their jobs.

\* Direct figures represent Cyprus Bagdad employment or expenditures alone. Direct and indirect figures may include amounts from suppliers or reflect accepted economic formulas applied by Sunregion Associates, Inc., an economic analysis firm.



Mill control room

At Cyprus Bagdad, we'll continue to provide a wealth of positive economic benefits and opportunities, through high-wage jobs and tax revenues to our local communities. These are great places in which to live and work. We want to keep them that way.

## Speakers Available for Local Groups

*Want to hear and see more about Cyprus Bagdad, and the way we partner with local communities to maintain the quality of life we all enjoy?*

*For a speaker and presentation to your community group, please call toll-free 1-888-491-3737.*

Mill grinding lines controlled by computer-based systems

