



CONTACT INFORMATION

Mining Records Curator
Arizona Geological Survey
1520 West Adams St.
Phoenix, AZ 85007
602-771-1601
<http://www.azgs.az.gov>
inquiries@azgs.az.gov

The following file is part of the

Arizona Department of Mines and Mineral Resources Mining Collection

ACCESS STATEMENT

These digitized collections are accessible for purposes of education and research. We have indicated what we know about copyright and rights of privacy, publicity, or trademark. Due to the nature of archival collections, we are not always able to identify this information. We are eager to hear from any rights owners, so that we may obtain accurate information. Upon request, we will remove material from public view while we address a rights issue.

CONSTRAINTS STATEMENT

The Arizona Geological Survey does not claim to control all rights for all materials in its collection. These rights include, but are not limited to: copyright, privacy rights, and cultural protection rights. The User hereby assumes all responsibility for obtaining any rights to use the material in excess of "fair use."

The Survey makes no intellectual property claims to the products created by individual authors in the manuscript collections, except when the author deeded those rights to the Survey or when those authors were employed by the State of Arizona and created intellectual products as a function of their official duties. The Survey does maintain property rights to the physical and digital representations of the works.

QUALITY STATEMENT

The Arizona Geological Survey is not responsible for the accuracy of the records, information, or opinions that may be contained in the files. The Survey collects, catalogs, and archives data on mineral properties regardless of its views of the veracity or accuracy of those data.

08/18/88

ARIZONA DEPARTMENT OF MINES AND MINERAL RESOURCES FILE DATA

PRIMARY NAME: BJB CLAIMS

ALTERNATE NAMES:

MOHAVE COUNTY MILS NUMBER: 465A

LOCATION: TOWNSHIP 16 N RANGE 14 W SECTION 7 QUARTER NW
LATITUDE: N 34DEG 44MIN 50SEC LONGITUDE: W 113DEG 45MIN 57SEC
TOPO MAP NAME: BEECHER CANYON - 7.5 MIN

CURRENT STATUS: UNKNOWN

COMMODITY:

SILVER
COPPER

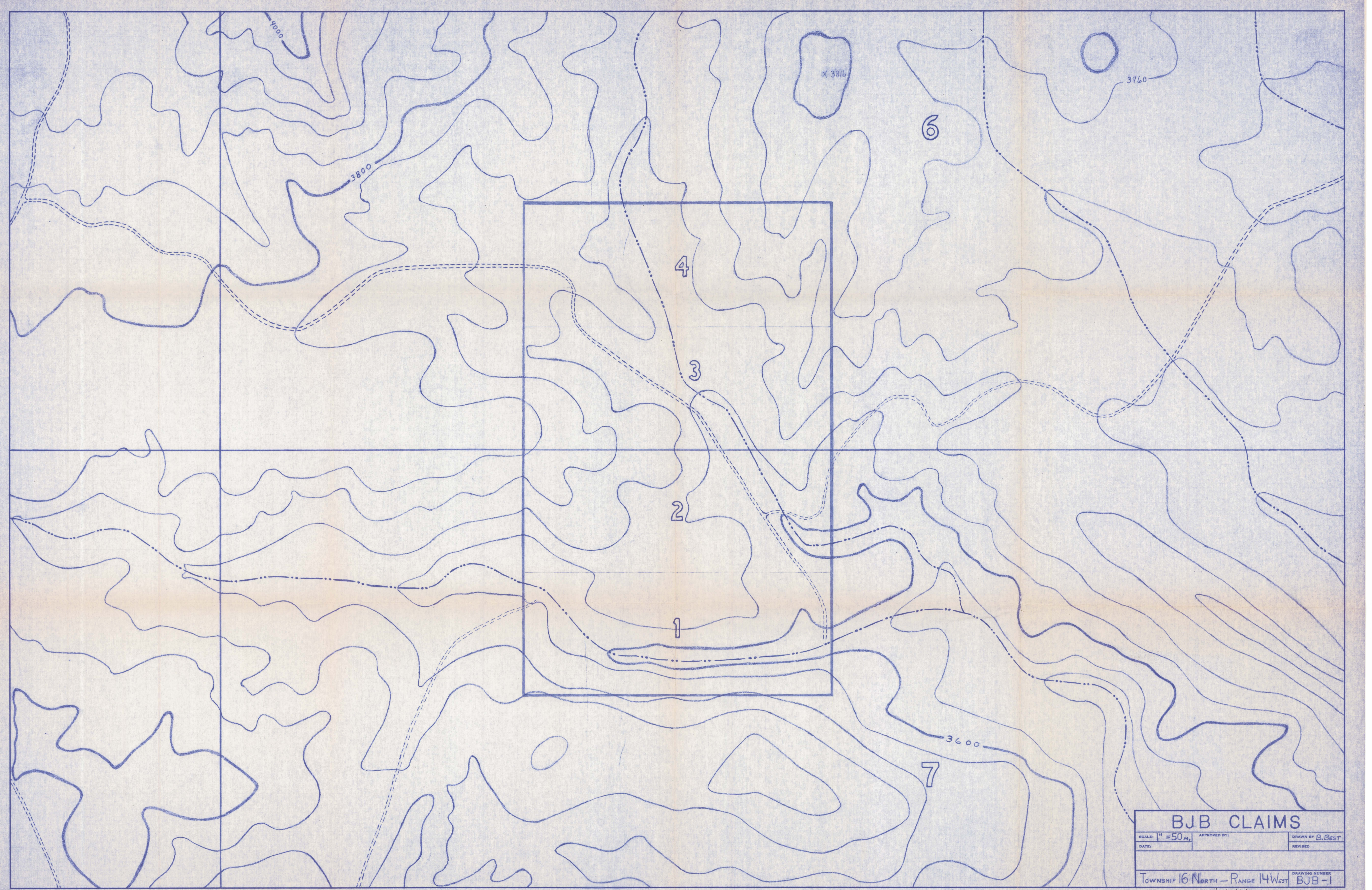
BIBLIOGRAPHY:

USGS BEECHER CANYON QUAD
ADMMR BJB CLAIMS FILE

BJB CLAIMS

MOHAVE COUNTY

NJN WR 8/9/88: Harold and Beverly Best (card) brought in geochemical sample maps for what has become a new file, the BJB Claims, Mohave County. this occurrence was previously MILS Unknown Shaft #21. Mr. Best reports the geology of the BJB Claims is similar to the Cedar Mine, consisting of a northerly trending vein which is exposed for 300 feet along a strike in the shaft area. The vein is up to 6 feet wide and associated with an intrusive dike. There are two shafts in this area, both of which are open to about 30' and then caved. The Bests have blocked out about 3,000 tons of dump material which assays 3.0 oz/ton Ag and have been conducting pilot leach tests on this material.



BJB CLAIMS		
SCALE: 1" = 50 ft.	APPROVED BY:	DRAWN BY: B. Best
DATE:		REVISED:
TOWNSHIP 16 NORTH - RANGE 14 WEST		DRAWING NUMBER: BJB-1

Sec 7 NW