



CONTACT INFORMATION

Mining Records Curator
Arizona Geological Survey
1520 West Adams St.
Phoenix, AZ 85007
602-771-1601
<http://www.azgs.az.gov>
inquiries@azgs.az.gov

The following file is part of the

Arizona Department of Mines and Mineral Resources Mining Collection

ACCESS STATEMENT

These digitized collections are accessible for purposes of education and research. We have indicated what we know about copyright and rights of privacy, publicity, or trademark. Due to the nature of archival collections, we are not always able to identify this information. We are eager to hear from any rights owners, so that we may obtain accurate information. Upon request, we will remove material from public view while we address a rights issue.

CONSTRAINTS STATEMENT

The Arizona Geological Survey does not claim to control all rights for all materials in its collection. These rights include, but are not limited to: copyright, privacy rights, and cultural protection rights. The User hereby assumes all responsibility for obtaining any rights to use the material in excess of "fair use."

The Survey makes no intellectual property claims to the products created by individual authors in the manuscript collections, except when the author deeded those rights to the Survey or when those authors were employed by the State of Arizona and created intellectual products as a function of their official duties. The Survey does maintain property rights to the physical and digital representations of the works.

QUALITY STATEMENT

The Arizona Geological Survey is not responsible for the accuracy of the records, information, or opinions that may be contained in the files. The Survey collects, catalogs, and archives data on mineral properties regardless of its views of the veracity or accuracy of those data.

03/31/88

ARIZONA DEPARTMENT OF MINES AND MINERAL RESOURCES FILE DATA

PRIMARY NAME: B C C MINES

ALTERNATE NAMES:

LA PAZ COUNTY MILS NUMBER: 751

LOCATION: TOWNSHIP 10 N RANGE 16 W SECTION 35 QUARTER --
LATITUDE: N 34DEG 09MIN 52SEC LONGITUDE: W 113DEG 53MIN 47SEC
TOPO MAP NAME: SWANSEA - 15 MIN

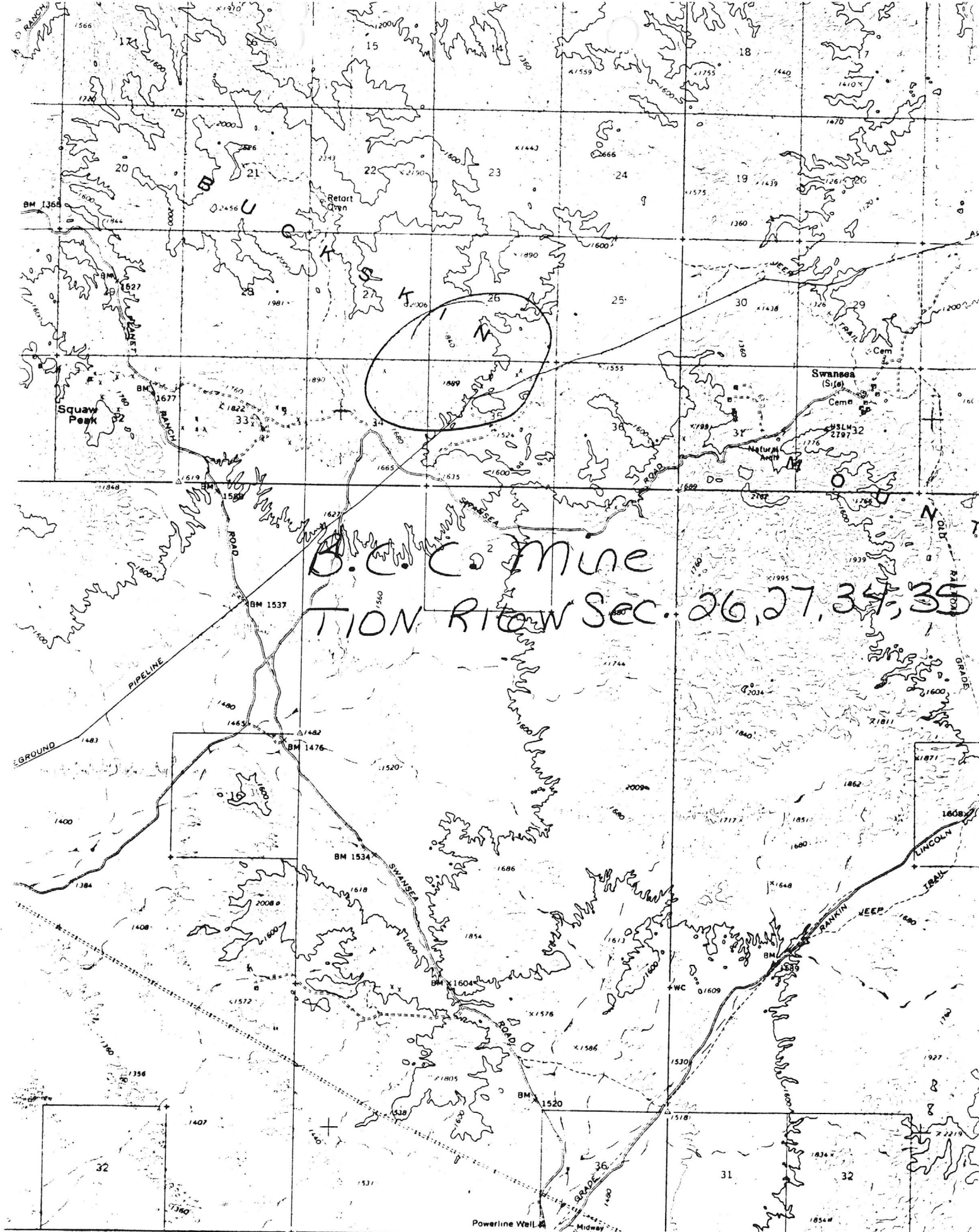
CURRENT STATUS: DEVEL DEPOSIT

COMMODITY:

COPPER OXIDE
COPPER SULFIDE

BIBLIOGRAPHY:

ADMMR BCC MINES FILE
ADDITIONAL HOLDINGS IN T10N R16W SEC 26,27,34
AZ GEOLOGICAL SOCIETY - 1980 SPRNG FIELD TRIP
P 40 - (ADMMR GEOLOGY FILE)



B.C. Mine
TION RITON Sec. 26, 27, 34, 35

Swansea, AZ

Midway (Site)

B.C.C. MINES

see Alaska Mine (file) Santa Cruz

KAP WR 1/9/81: Gary Anderson, P.O. Box 224, Dos Palos, California 93620, reported that he is involved with BCC Mines and is assisting them in attaining the various permits necessary for operation. The property is located north of Parker, Arizona, in Sections 13 and 15, T10N, R16W, Santa Maria District, Yuma County. He explained that they hold claims which total 1080 acres of claims, which are known as BCC #1 thru #54, AMC serial numbers starting 70611. The operation is reportedly to be a vat leaching plant using hydrochloric acid, sodium chloride, and hydrofluoric acid to recover platinum and gold. The operation is reportedly designed by Mr. Robert Craig of Las Vegas. Mr. Anderson explained that he did not know where there were any similar plants in operation. It was suggested that he review the metallurgical plant design with a consulting metallurgist.

KAP WR 2/26/88: In the company of Nyal Niemuth a visit was made to the BCC Mine (file) La Paz County to review an occurrence of lower plate mineralization to determine the property's potential for production of acid soluble copper ore and its current status. A separate report has been written for the file.

MINE: B C C Mine
COUNTY: La Paz
ADMMR FILE: B C C Mines

ENGINEER: Ken A. Phillips
and Nyal Niemuth
DATE: February 25, 1988

SUBJECT: Property visit on above date.

In the company of Nyal Niemuth a visit was made to the B C C Mines (file), La Paz County to review an occurrence of lower plate mineralization, to determine the property's potential for production of acid soluble copper ore and its current status.

The property appears to have been active as an attempted copper heap leaching operation in the late 1960's to mid 1970's. Approximately 6000 ton of oxide copper ore had been heaped about 20 feet high in a heap 100 feet wide and 50 feet long on a plastic lined pad 125 X 125 feet in dimension. It appears that acid was applied for at least a short time, but +2" material was not fully permeated and thus the heap may only have yielded half the acid soluble copper available. Two concrete scrap iron precipitation launders remain, but it is difficult to determine how they may have fit in the circuit. About 20 tons scrap iron wire remains in a stockpile.

Production was from numerous dozer cuts and pits. The copper mineralization is not intensive and appears primarily as chrysocolla staining on fracture surfaces. Some of the copper mineralization pervades an altered quartzite. The lower plate mineralization may be an important limiting factor in the deposits size potential. The property should receive extensive geologic evaluation to determine if it has potential for the discovery of a larger deposit. No sampling was justified in light of the need to find a larger potential.



STATE OF ARIZONA
DEPARTMENT OF MINERAL RESOURCES

MINERAL BUILDING, FAIRGROUNDS
PHOENIX, ARIZONA 85007



November 21, 1972

B.C.C. Mines

November 17, 1972 - A Mr. Barney Hebb, was in the office to ask about taxes on unimproved mining claims. Mr. Hebb owns 52 claims in Sec. 26, 27, 34 & 35, T10N, R16W in Yuma County. Claims are for copper. He reports copper mineralization (bornite & chalcopyrite) outcrops numerous places on his claims. Considerable copper material has been exposed in dozer cuts. \$300,000 has been obtained to drill two 600' - 45° core drill holes and drilling is to commence in the 1st week of December 1972. Mr. Hebb would like someone from our office to look at his property. Harry Winters, consulting geologist from Tucson has been employed as a consultant for the property.

Ken A. Phillips