



## **CONTACT INFORMATION**

Mining Records Curator  
Arizona Geological Survey  
1520 West Adams St.  
Phoenix, AZ 85007  
602-771-1601  
<http://www.azgs.az.gov>  
[inquiries@azgs.az.gov](mailto:inquiries@azgs.az.gov)

The following file is part of the

Arizona Department of Mines and Mineral Resources Mining Collection

## **ACCESS STATEMENT**

These digitized collections are accessible for purposes of education and research. We have indicated what we know about copyright and rights of privacy, publicity, or trademark. Due to the nature of archival collections, we are not always able to identify this information. We are eager to hear from any rights owners, so that we may obtain accurate information. Upon request, we will remove material from public view while we address a rights issue.

## **CONSTRAINTS STATEMENT**

The Arizona Geological Survey does not claim to control all rights for all materials in its collection. These rights include, but are not limited to: copyright, privacy rights, and cultural protection rights. The User hereby assumes all responsibility for obtaining any rights to use the material in excess of "fair use."

The Survey makes no intellectual property claims to the products created by individual authors in the manuscript collections, except when the author deeded those rights to the Survey or when those authors were employed by the State of Arizona and created intellectual products as a function of their official duties. The Survey does maintain property rights to the physical and digital representations of the works.

## **QUALITY STATEMENT**

The Arizona Geological Survey is not responsible for the accuracy of the records, information, or opinions that may be contained in the files. The Survey collects, catalogs, and archives data on mineral properties regardless of its views of the veracity or accuracy of those data.

09/30/98

ARIZONA DEPARTMENT OF MINES AND MINERAL RESOURCES FILE DATA

PRIMARY NAME: AZTEC GRANITE QUARRY

ALTERNATE NAMES:

JONES QUARRY  
PATENTED CLAIMS MS 4138

PIMA COUNTY MILS NUMBER: 1166

LOCATION: TOWNSHIP 17 S RANGE 15 E SECTION 35 QUARTER W  
LATITUDE: N 31DEG 54MIN 34SEC LONGITUDE: W 110DEG 47MIN 04SEC  
TOPO MAP NAME: CORONA DE TUCSON - 7.5 MIN

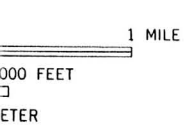
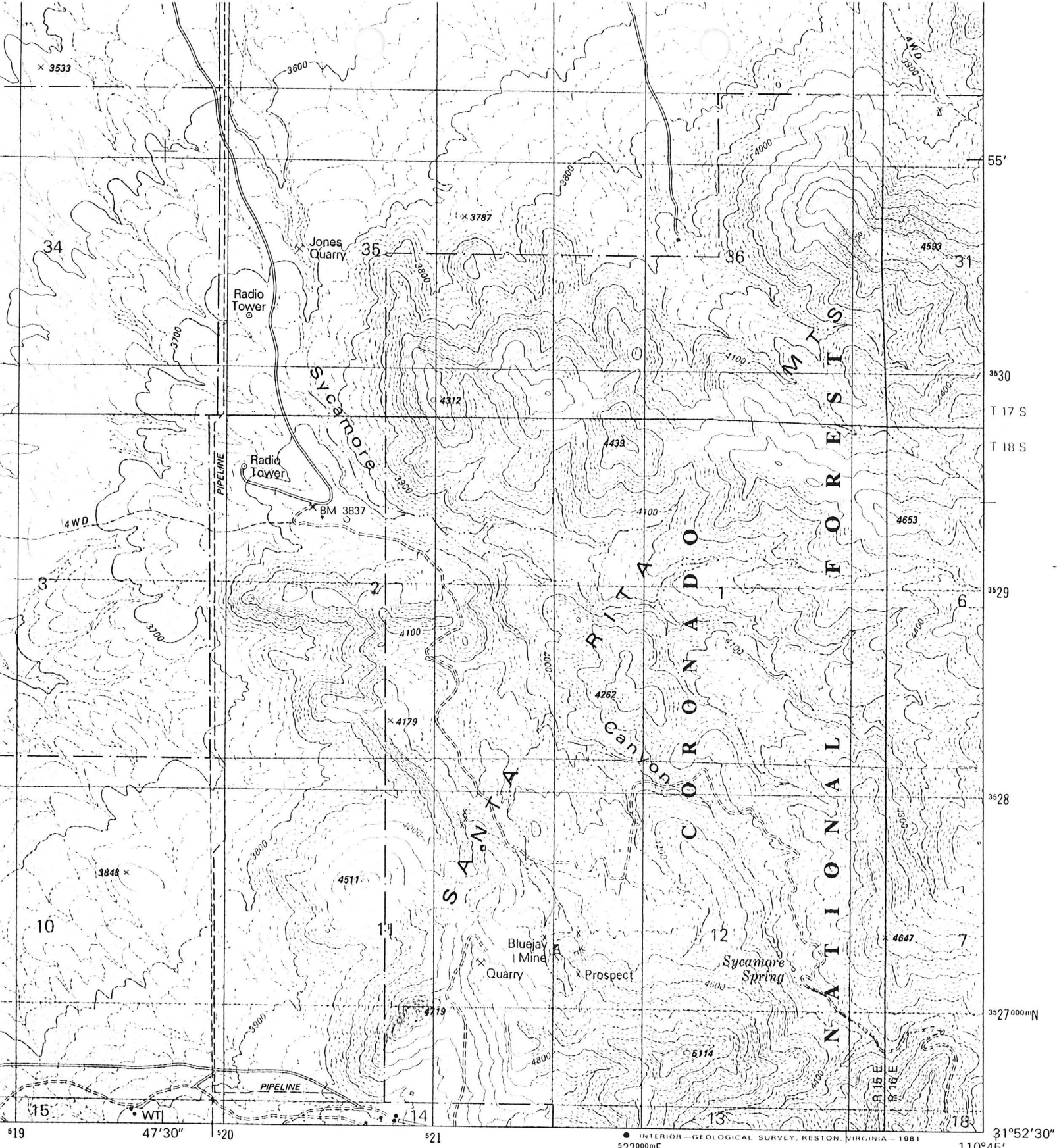
CURRENT STATUS: PAST PRODUCER

COMMODITY:

STONE GRANITE DM

BIBLIOGRAPHY:

ADMMR AZTEC GRANITE QUARRY MINE FILE  
BLM MINING DISTRICT 680  
USGS CORONA DE TUCSON, AZ 7.5 MIN QUADRANGLE



QUADRANGLE LOCATION

From  
**WIDE WORLD OF MAPS INC.**  
**ARIZ. MAP SHOP & GALLERY**  
 Phoenix, Arizona

- ROAD CLASSIFICATION**
- Primary highway, hard surface ————
  - Secondary highway, hard surface - - - - -
  - Light-duty road, hard or improved surface = = = = =
  - Unimproved road = = = = =
  - ( ) Interstate Route
  - ( ) U. S. Route
  - ( ) State Route

**CORONA DE TUCSON, ARIZ.**  
 NE/4 SAHUARITA 15' QUADRANGLE  
 INTERIOR—GEOLOGICAL SURVEY, RESTON, VIRGINIA—1981  
 522000mE

EMPIRE RA-3847 1 SW



680

SE 1/4, T. 17 S., R. 15 E.  
HELVETIA DIST.

AZTEC GRANITE  
QUARRY PLACER  
4138 P.L.T.

Sec. 35

Sc

Date Printed: 09/30/98

ARIZONA DEPARTMENT OF MINES AND MINERAL RESOURCES

**INFORMATION SUMMARY**

Information from: **Bill Miller**

Company:

Address: 1730 S. Camino Cartagens  
City, State ZIP: Sahuarita, Arizona 85629  
Phone: 520-625-7570

**MINE:** Aztec Granite Quarry Placer

ADMMR Mine File: Aztec Granite Quarry  
County: Pima  
AzMILS Number: 1166

SUMMARY

Bill Miller, 1730 S. Camino Cartagens, Sahuarita, Arizona 85629, phone 520-625-7570 reported he is planning to purchase the Aztec Granite Quarry Placer patented mine in the W $\frac{1}{2}$ , Sec. 35, T.17S.,R.15E. for both a home site and a possible granite quarry. He described himself as a artist specializing in sculpture and that he did not see that a small commercial block quarry would be a detriment to his lifestyle. He described the quarry site as similar to pictures of turn-of-the-century block quarries. Further, he said that there is the remains of a gin pole and other non-powered equipment that he would place in the 1930s or earlier.

This property is being added to AZMILS.

Ken A. Phillips, Chief Engineer      Date: August 28, 1998