



CONTACT INFORMATION

Mining Records Curator
Arizona Geological Survey
1520 West Adams St.
Phoenix, AZ 85007
602-771-1601
<http://www.azgs.az.gov>
inquiries@azgs.az.gov

The following file is part of the

Arizona Department of Mines and Mineral Resources Mining Collection

ACCESS STATEMENT

These digitized collections are accessible for purposes of education and research. We have indicated what we know about copyright and rights of privacy, publicity, or trademark. Due to the nature of archival collections, we are not always able to identify this information. We are eager to hear from any rights owners, so that we may obtain accurate information. Upon request, we will remove material from public view while we address a rights issue.

CONSTRAINTS STATEMENT

The Arizona Geological Survey does not claim to control all rights for all materials in its collection. These rights include, but are not limited to: copyright, privacy rights, and cultural protection rights. The User hereby assumes all responsibility for obtaining any rights to use the material in excess of "fair use."

The Survey makes no intellectual property claims to the products created by individual authors in the manuscript collections, except when the author deeded those rights to the Survey or when those authors were employed by the State of Arizona and created intellectual products as a function of their official duties. The Survey does maintain property rights to the physical and digital representations of the works.

QUALITY STATEMENT

The Arizona Geological Survey is not responsible for the accuracy of the records, information, or opinions that may be contained in the files. The Survey collects, catalogs, and archives data on mineral properties regardless of its views of the veracity or accuracy of those data.

07/08/88

ARIZONA DEPARTMENT OF MINES AND MINERAL RESOURCES FILE DATA

PRIMARY NAME: AZTEC

ALTERNATE NAMES:
MICHIGAN

COCHISE COUNTY MILS NUMBER: 804

LOCATION: TOWNSHIP 17 S RANGE 31 E SECTION 20 QUARTER SW
LATITUDE: N 32DEG 00MIN SEC LONGITUDE: W 109DEG 00MIN SEC
TOPO MAP NAME: PORTAL - 15 MIN

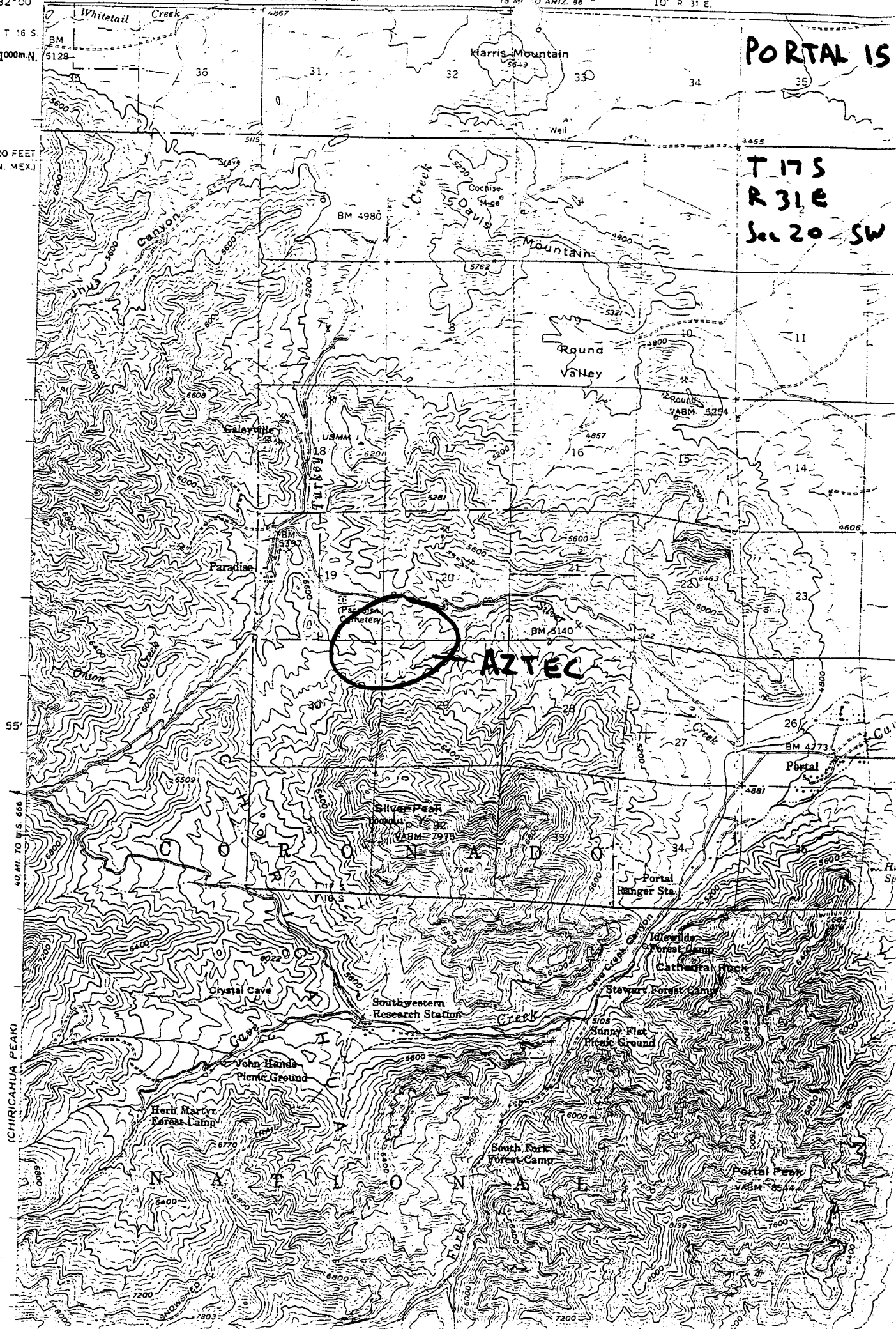
CURRENT STATUS: RAW PROSPECT

COMMODITY:
SILVER
SILICON FLUX

BIBLIOGRAPHY:
ADMMR AZTEC FILE

T 16 S
3541000m N.
360 000 FEET
(N. MEX.)

PORTAL IS
T 17 S
R 31 E
Sec 20 SW



AZTEC

55'
40 MI TO U.S. 666
(CHIRICAHUA PEAK)

C O R O N A D O

N A T I O N A L F O R E S T

AZTEC

COCHISE COUNTY

NJN WR 5/6/88: Hal Halpin, 44 Lane, Phoenix, Arizona 85031, 272-1935 visited and reported he is working with Dennis Mark on some claims near Rodeo, New Mexico on the west side of the Chiricahua Mountains. Their plans are to ship a silver bearing flux to Phelps Dodge's Hidalgo smelter. Phelps Dodge has analyzed samples of the material and deemed it to be acceptable flux and reported it contains up to 10 oz/ton Ag. Mr. Halpin calls the property the Aztec Mine and reports it has had no prior production.
