



CONTACT INFORMATION

Mining Records Curator
Arizona Geological Survey
1520 West Adams St.
Phoenix, AZ 85007
602-771-1601
<http://www.azgs.az.gov>
inquiries@azgs.az.gov

The following file is part of the

Arizona Department of Mines and Mineral Resources Mining Collection

ACCESS STATEMENT

These digitized collections are accessible for purposes of education and research. We have indicated what we know about copyright and rights of privacy, publicity, or trademark. Due to the nature of archival collections, we are not always able to identify this information. We are eager to hear from any rights owners, so that we may obtain accurate information. Upon request, we will remove material from public view while we address a rights issue.

CONSTRAINTS STATEMENT

The Arizona Geological Survey does not claim to control all rights for all materials in its collection. These rights include, but are not limited to: copyright, privacy rights, and cultural protection rights. The User hereby assumes all responsibility for obtaining any rights to use the material in excess of "fair use."

The Survey makes no intellectual property claims to the products created by individual authors in the manuscript collections, except when the author deeded those rights to the Survey or when those authors were employed by the State of Arizona and created intellectual products as a function of their official duties. The Survey does maintain property rights to the physical and digital representations of the works.

QUALITY STATEMENT

The Arizona Geological Survey is not responsible for the accuracy of the records, information, or opinions that may be contained in the files. The Survey collects, catalogs, and archives data on mineral properties regardless of its views of the veracity or accuracy of those data.

02/17/87

ARIZONA DEPARTMENT OF MINES AND MINERAL RESOURCES FILE DATA

PRIMARY NAME: AVONDALE SW

ALTERNATE NAMES:

MARICOPA COUNTY MILS NUMBER: 660

LOCATION: TOWNSHIP 1 S RANGE 1 W SECTION 8 QUARTER E2
LATITUDE: N DEG MIN SEC LONGITUDE: W DEG MIN SEC
TOPO MAP NAME: AVONDALE SW - 7.5 MIN

CURRENT STATUS: UNKNOWN

COMMODITY:
GOLD

BIBLIOGRAPHY:
ADMMR AVONDALE SW PROSPECTS FILE

AVONDALE SW QUADRANGLE
ARIZONA—MARICOPA CO.
7.5 MINUTE SERIES (TOPOGRAPHIC)

SW 4 AVONDALE 15' QUADRANGLE

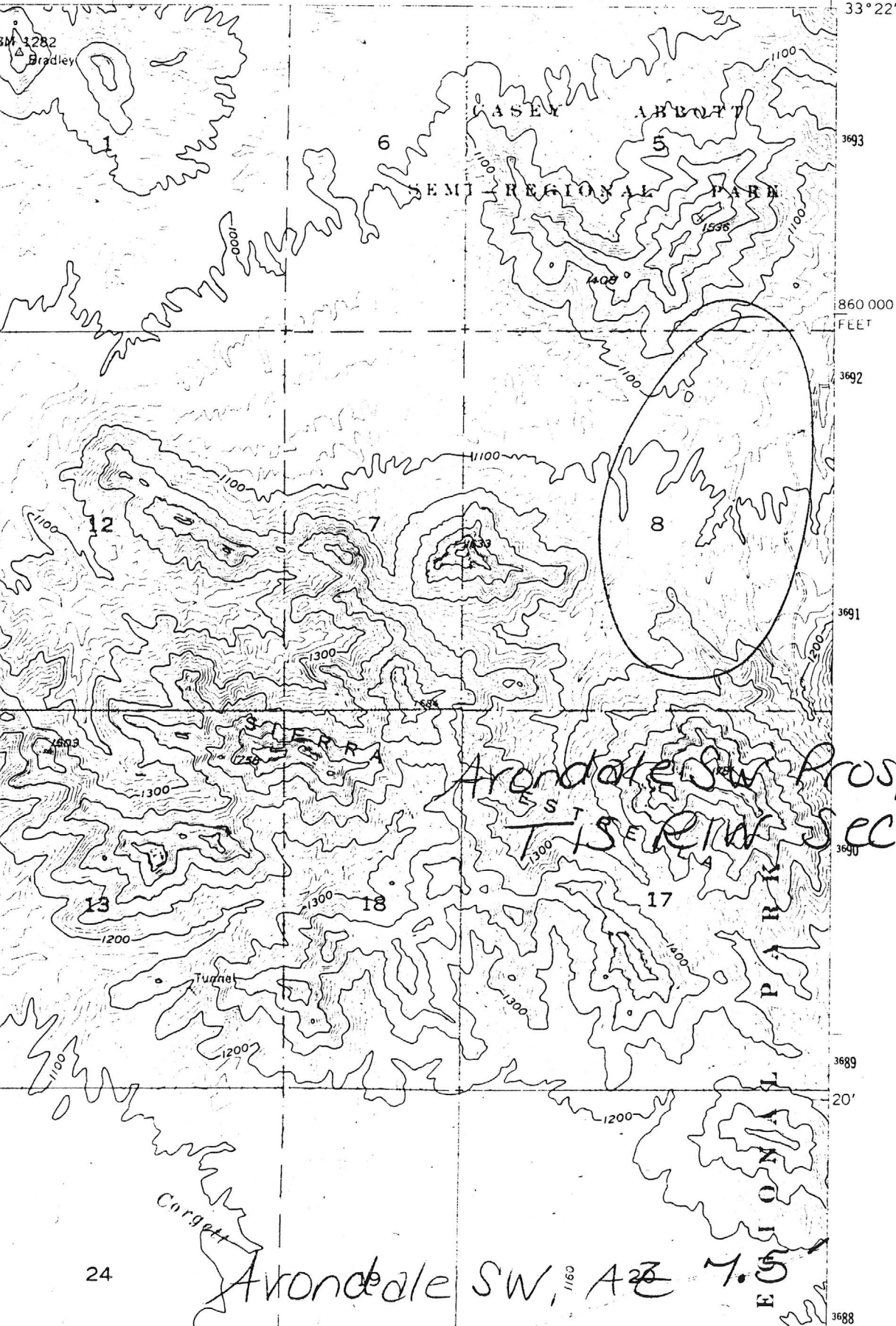
3550 IV NE
(TOLLESON)

369 350 000 FEET R 2 W R 1 W 370

371

112° 22' 30"

33° 22' 30"



Arondale SW Prospects
T 1 S E R 1 W Sec. 8 E 1/2

REGIONAL LOCATION

AVONDALE SW PROSPECTS

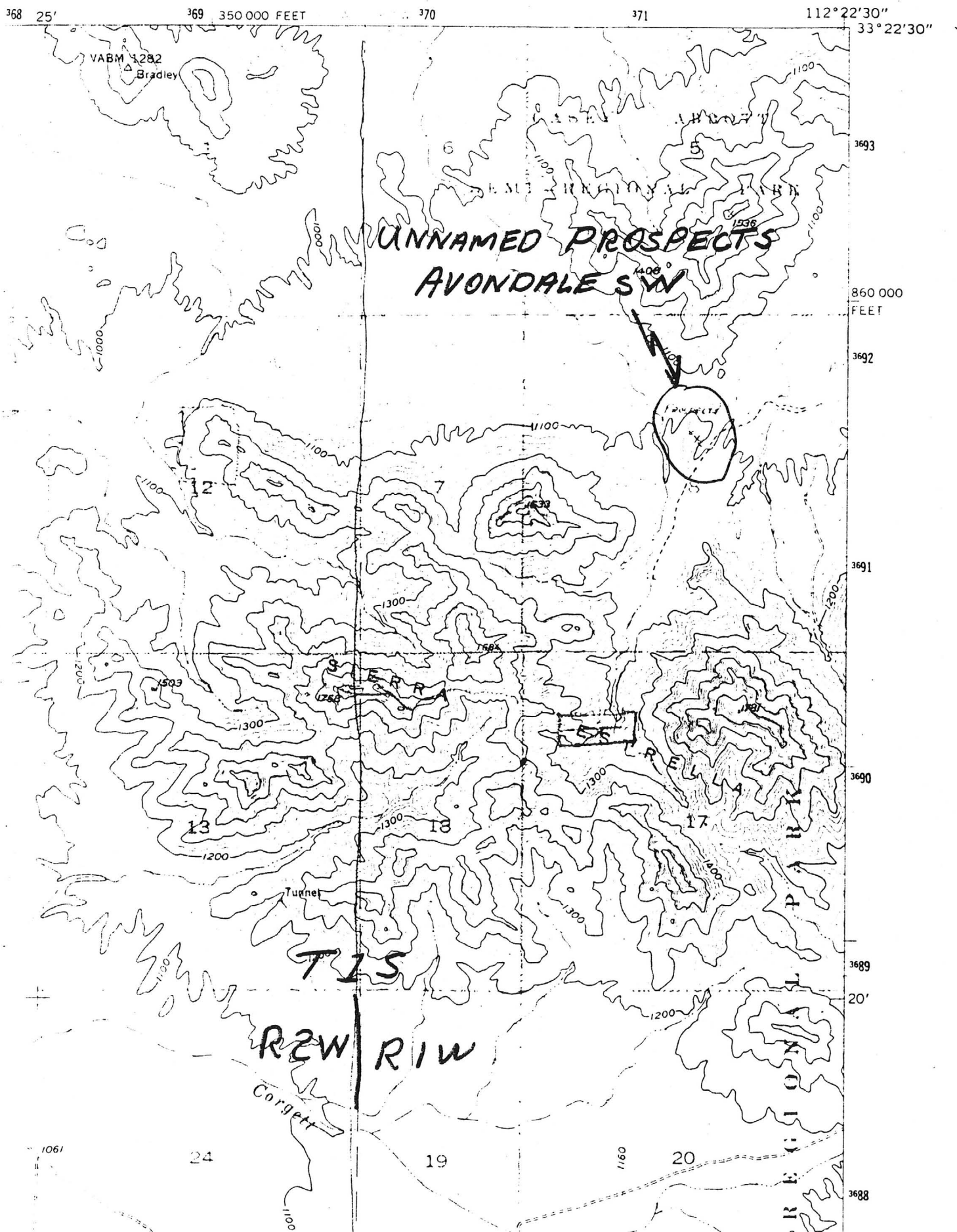
(Unnamed Prospects)

Section 8, T1S, R1W



3550 IV NE
(TOLLESON)

SW 4 AVONDALE 15' QUADRANGLE



Submitted 10/26/80

DEPARTMENT OF MINERAL RESOURCES

STATE OF ARIZONA
FIELD ENGINEERS REPORT

Mine AVONDALE SW PROSPECTS
Sec 8, T1S, R1W, Unnamed Prospects Date December 2, 1980
District Sierra Estrella Mts (Maricopa Cty) Engineer Ken A. Phillips
Subject: Mine Visit

KAP

Principal Minerals: Gold - probably.

Location: E-1/2 Sec. 8, T1S, R1W.
See attached map from Avondale SW 7½' topographic map.

Topographic Quad: Avondale SW 7½'

Land Position: Estrella Regional Park.
Administered by the Maricopa County Parks Department.

Access: Four-wheel drive road from County Park Road.

Owner: Current owner is unknown.
Land is reportedly patented.
No identifiable claim posts or monuments were found.

Terrain: Low lying desert hills cut by deep dry washes.

Operating History: No names are known. Prospect pits and shallow shafts remain
as evidence of concentrated and prolonged prospecting efforts.

Geologic Setting: Complex of pre-Cambrian granitoid gneiss with outcrop bull
quartz and intrusive medium to fine grained mafic dikes.

Mineralization: Red iron stained quartz vein in altered gneiss.
Vein contains iron stained milky white quartz with additional
hematite. Strike N18°W, dip 20°SE, width 1-1.5 feet.
Length approximately 300 feet traceable in prospect pits
along the strike.

Dimension and Value
Of Ore Body: Insufficient data available.

Reserves: None; potential is for a small narrow vein gold in quartz vein
mine. Detailed sampling would be required to establish even
the smallest reserve of ore.

Workings: Shallow shafts (5-15 ft deep) and prospect pits along vein.

Suggestions For
Additional Work: Sampling and land status verification.

KAP:mw

cc: DMR Tucson