



## **CONTACT INFORMATION**

Mining Records Curator  
Arizona Geological Survey  
1520 West Adams St.  
Phoenix, AZ 85007  
602-771-1601  
<http://www.azgs.az.gov>  
[inquiries@azgs.az.gov](mailto:inquiries@azgs.az.gov)

The following file is part of the

Arizona Department of Mines and Mineral Resources Mining Collection

## **ACCESS STATEMENT**

These digitized collections are accessible for purposes of education and research. We have indicated what we know about copyright and rights of privacy, publicity, or trademark. Due to the nature of archival collections, we are not always able to identify this information. We are eager to hear from any rights owners, so that we may obtain accurate information. Upon request, we will remove material from public view while we address a rights issue.

## **CONSTRAINTS STATEMENT**

The Arizona Geological Survey does not claim to control all rights for all materials in its collection. These rights include, but are not limited to: copyright, privacy rights, and cultural protection rights. The User hereby assumes all responsibility for obtaining any rights to use the material in excess of "fair use."

The Survey makes no intellectual property claims to the products created by individual authors in the manuscript collections, except when the author deeded those rights to the Survey or when those authors were employed by the State of Arizona and created intellectual products as a function of their official duties. The Survey does maintain property rights to the physical and digital representations of the works.

## **QUALITY STATEMENT**

The Arizona Geological Survey is not responsible for the accuracy of the records, information, or opinions that may be contained in the files. The Survey collects, catalogs, and archives data on mineral properties regardless of its views of the veracity or accuracy of those data.

01/12/89

ARIZONA DEPARTMENT OF MINES AND MINERAL RESOURCES FILE DATA

PRIMARY NAME: ASH CANYON PLACERS

ALTERNATE NAMES:

HUACHUCA PLACERS

COCHISE COUNTY MILS NUMBER: 869

LOCATION: TOWNSHIP 24 S RANGE 21 E SECTION 6 QUARTER NW

LATITUDE: N 31DEG 22MIN 40SEC LONGITUDE: W 110DEG 15MIN 10SEC

TOPO MAP NAME: MILLER PEAK - 7.5 MIN

CURRENT STATUS: PAST PRODUCER

COMMODITY:

GOLD PLACER

BIBLIOGRAPHY:

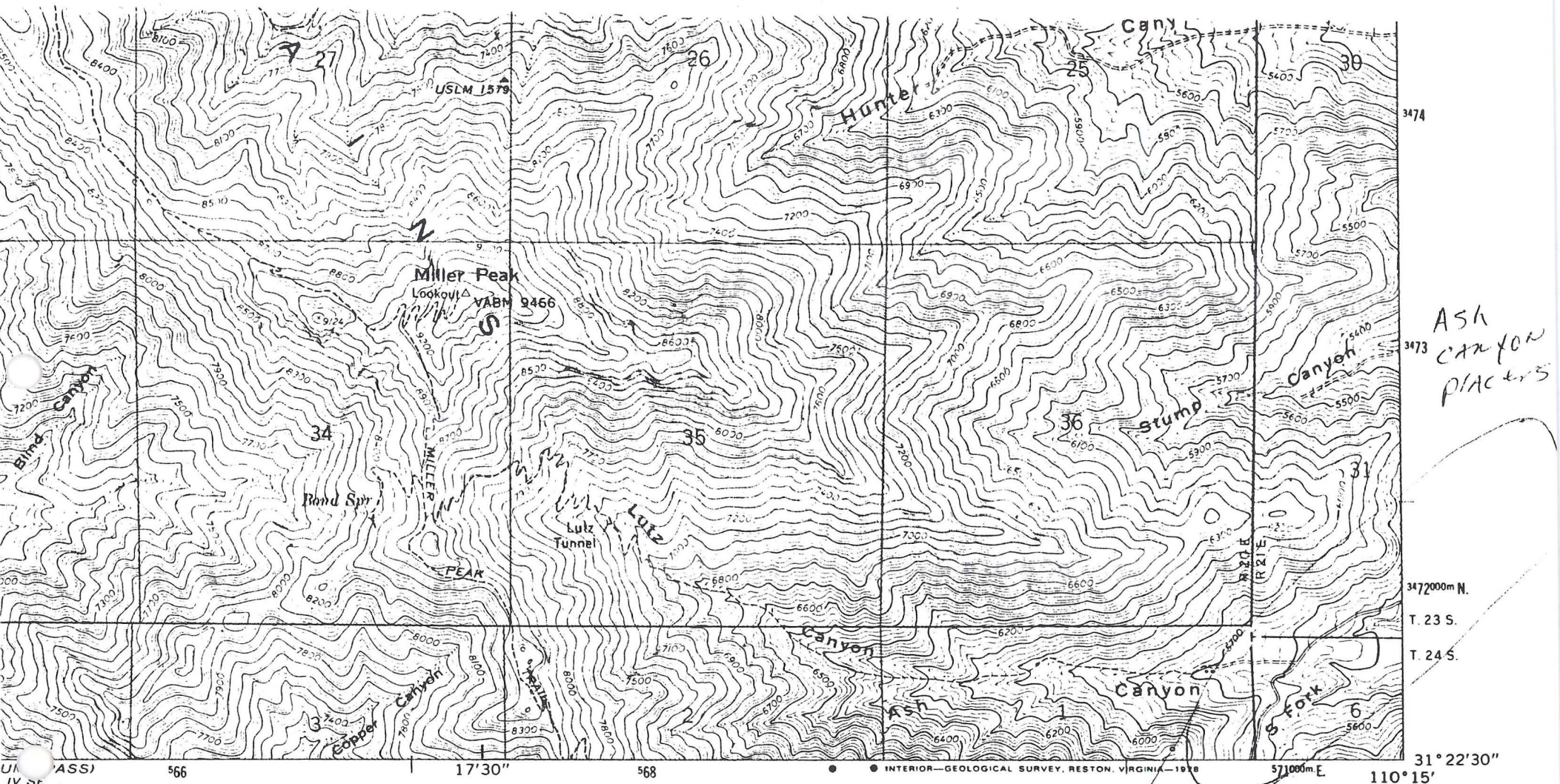
ADMMR ASH CANYON PLACERS FILE

WILLSON, E. D. 1961, AZBM BULL 168 P 69

CLAIMS EXTEND INTO S2 SEC 31, 32 T23S R21E

*File 7013*





1:24,000  
0 1 MILE  
0 1000 4000 5000 6000 7000 FEET  
0 1 KILOMETER

VERTICAL DATUM OF 1929

NATIONAL MAP ACCURACY STANDARDS  
RESTON, VIRGINIA 22092  
S AND SYMBOLS IS AVAILABLE ON REQUEST



QUADRANGLE LOCATION

ROAD CLASSIFICATION  
Medium-duty ——— Light-duty ———  
Unimproved dirt - - - - -  
○ State Route

MILLER PEAK, ARIZ.  
NE/4 SUNNYSIDE 15' QUADRANGLE  
N3122.5—W11015/7.5

1958  
PHOTOREVISED 1978  
AMS 3946 IV NE—SERIES V898

ASH  
CANYON  
PLACERS

(HEREFORD SW)