



## **CONTACT INFORMATION**

Mining Records Curator  
Arizona Geological Survey  
1520 West Adams St.  
Phoenix, AZ 85007  
602-771-1601  
<http://www.azgs.az.gov>  
[inquiries@azgs.az.gov](mailto:inquiries@azgs.az.gov)

The following file is part of the

Arizona Department of Mines and Mineral Resources Mining Collection

## **ACCESS STATEMENT**

These digitized collections are accessible for purposes of education and research. We have indicated what we know about copyright and rights of privacy, publicity, or trademark. Due to the nature of archival collections, we are not always able to identify this information. We are eager to hear from any rights owners, so that we may obtain accurate information. Upon request, we will remove material from public view while we address a rights issue.

## **CONSTRAINTS STATEMENT**

The Arizona Geological Survey does not claim to control all rights for all materials in its collection. These rights include, but are not limited to: copyright, privacy rights, and cultural protection rights. The User hereby assumes all responsibility for obtaining any rights to use the material in excess of "fair use."

The Survey makes no intellectual property claims to the products created by individual authors in the manuscript collections, except when the author deeded those rights to the Survey or when those authors were employed by the State of Arizona and created intellectual products as a function of their official duties. The Survey does maintain property rights to the physical and digital representations of the works.

## **QUALITY STATEMENT**

The Arizona Geological Survey is not responsible for the accuracy of the records, information, or opinions that may be contained in the files. The Survey collects, catalogs, and archives data on mineral properties regardless of its views of the veracity or accuracy of those data.

01/09/97

ARIZONA DEPARTMENT OF MINES AND MINERAL RESOURCES FILE DATA

PRIMARY NAME: ARROWHEAD

ALTERNATE NAMES:

FAITH IN YOU GROUP  
RUSTY POINT  
SUNSET  
CHICKISOW

MARICOPA COUNTY MILS NUMBER: 24

LOCATION: TOWNSHIP 1 S RANGE 3 W SECTION 31 QUARTER SW  
LATITUDE: N 33DEG 17MIN 33SEC LONGITUDE: W 112DEG 36MIN 05SEC  
TOPO MAP NAME: BUCKEYE - 15 MIN

CURRENT STATUS: RAW PROSPECT

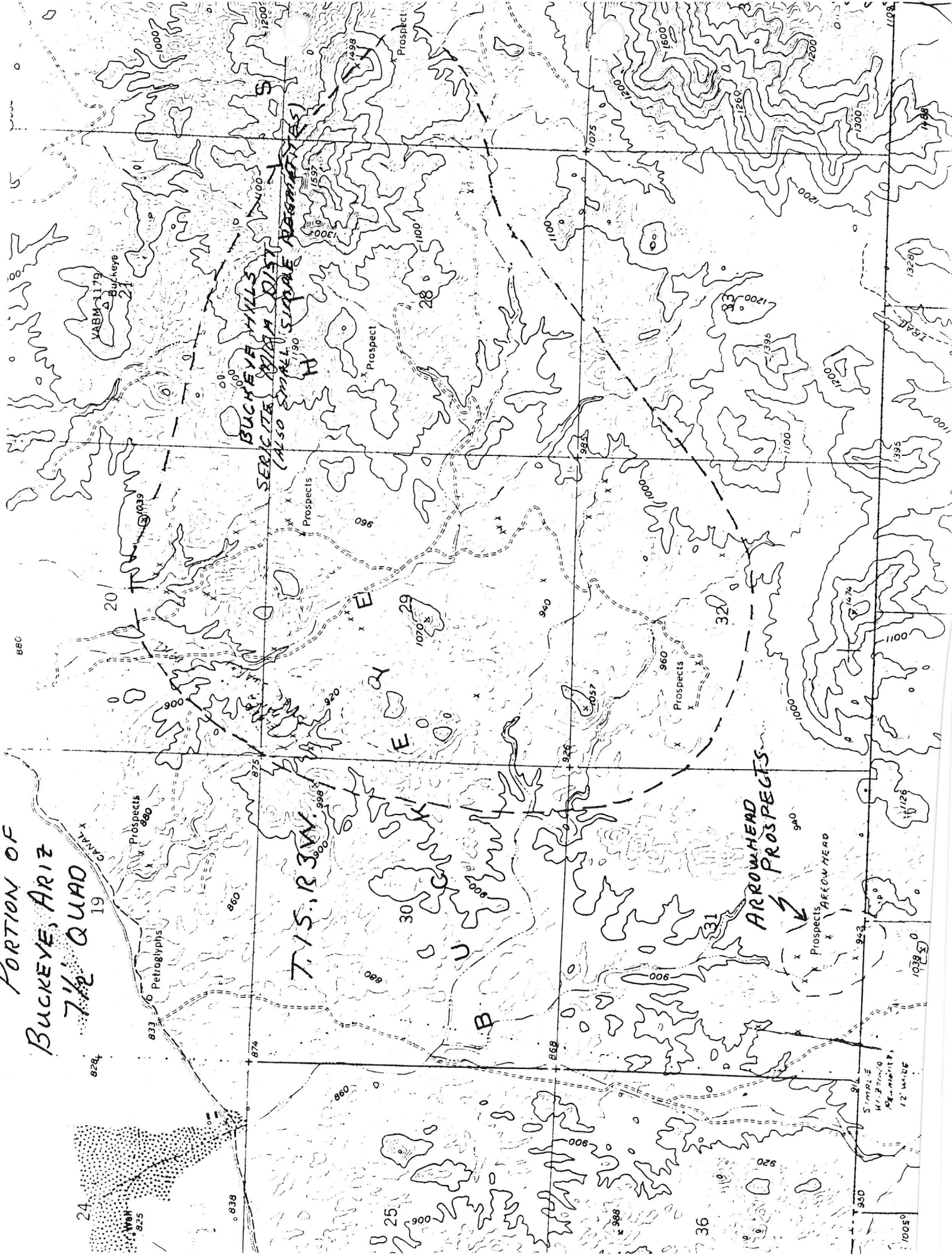
COMMODITY:

GEMSTONE TOURMALINE  
COLUMBIUM COLUMBITE  
FELDSPAR  
RARE EARTHS  
URANIUM  
COLUMBIUM COLUMBITE  
TITANIUM  
MICA

BIBLIOGRAPHY:

USGS BUCKEYE QUAD  
USAEC 172-484 PRELIM RECONN P 419  
ADMMR ARROWHEAD FILE  
GJBX 143 1981 RADIOACTIVE OCCURRENCES AND  
URANIUM PRODUCTION IN AZ P 197-201

PORTION OF  
BUCKEYE, ARIZ  
7 1/2 QUAD



BUCKEYE HILLS  
SERICITE BIOTITE QUARTZ  
(ALSO SMALL SPINEL REGRINDERS)

ARROWHEAD PROSPECTS

T. 15. R. 3W.

Prospects 880  
Petroglyphs

Prospect

Prospects 960

Prospect ARROWHEAD

Wash 825

Symbol E  
M.F. 12' W. 20'

VABM-1179  
Buckeye

Symbol E  
M.F. 12' W. 20'

MINE AND PROSPECT FIELD VISIT DATA SUMMARY

Sheet 1 of 2

COMMODITIES Mica (Prospects)

MILS ID No. 24 Date May 12, 1982

ENGINEER Nyal J. Niemuth, Ken A. Phillips

INFORMATION FROM: Same

PROPERTY SUMMARY

I. MINE NAME Arrowhead OTHER POSSIBLE NAMES Chickisaw  
 INCLUDING ANY CLAIM NAMES NOTED

II. LOCATION: T 1S R 3W SEC(S) SW Sec. 31 MINE DISTRICT 1  
 ELEV. 940' COUNTY Maricopa TOPO QUAD. Buckeye  
 DIRECTIONS As on map

MAP ATTACHED Yes

III. OWNERSHIP: NAME McDaniels, Theresa PHONE \_\_\_\_\_  
 ADDRESS: P.O.Box 513, Buckeye  
 COMPANY NAME IF ANY: Elder Mining Company  
 PERTINENT PEOPLE \_\_\_\_\_

IV. PROPERTY AND HOLDINGS: Unpatented mining claims

V. PAST PRODUCTION - NOTED, KNOWN, PROBABLE, UNKNOWN, NONE None

IV. CURRENT STATUS: Idle

IIV. WORKINGS: Catapillar Prospect trenches

IIV. GEOLOGY AND MINERALOGY: DEPOSIT TYPE: Simple pegmatite

LENGTH: + 500' WIDTH: Up to 12' VEIN STRIKE N NE

HOST ROCK: Schist

ECONOMIC MINERALS: Numerous Narrow simple (quartz, feldspar, minor mica) pegmatites.  
Generally concordant to schist although a few Normal to structure also observed.

COMMENTS: No Adjacent sericite mineralization developed

IX. EQUIPMENT ON SIGHT: \_\_\_\_\_