



## **CONTACT INFORMATION**

Mining Records Curator  
Arizona Geological Survey  
1520 West Adams St.  
Phoenix, AZ 85007  
602-771-1601  
<http://www.azgs.az.gov>  
[inquiries@azgs.az.gov](mailto:inquiries@azgs.az.gov)

The following file is part of the

Arizona Department of Mines and Mineral Resources Mining Collection

## **ACCESS STATEMENT**

These digitized collections are accessible for purposes of education and research. We have indicated what we know about copyright and rights of privacy, publicity, or trademark. Due to the nature of archival collections, we are not always able to identify this information. We are eager to hear from any rights owners, so that we may obtain accurate information. Upon request, we will remove material from public view while we address a rights issue.

## **CONSTRAINTS STATEMENT**

The Arizona Geological Survey does not claim to control all rights for all materials in its collection. These rights include, but are not limited to: copyright, privacy rights, and cultural protection rights. The User hereby assumes all responsibility for obtaining any rights to use the material in excess of "fair use."

The Survey makes no intellectual property claims to the products created by individual authors in the manuscript collections, except when the author deeded those rights to the Survey or when those authors were employed by the State of Arizona and created intellectual products as a function of their official duties. The Survey does maintain property rights to the physical and digital representations of the works.

## **QUALITY STATEMENT**

The Arizona Geological Survey is not responsible for the accuracy of the records, information, or opinions that may be contained in the files. The Survey collects, catalogs, and archives data on mineral properties regardless of its views of the veracity or accuracy of those data.

01/09/97

ARIZONA DEPARTMENT OF MINES AND MINERAL RESOURCES FILE DATA

PRIMARY NAME: ARLENE GROUP

ALTERNATE NAMES:

GILA COUNTY MILS NUMBER: 91

LOCATION: TOWNSHIP 1 S RANGE 14 E SECTION 29 QUARTER N2  
LATITUDE: N 33DEG 19MIN 15SEC LONGITUDE: W 110DEG 57MIN 30SEC  
TOPO MAP NAME: PINAL RANCH - 7.5 MIN

CURRENT STATUS: EXP PROSPECT

COMMODITY:  
COPPER

BIBLIOGRAPHY:  
ADMMR ARLENE GROUP FILE  
CLAIMS EXTEND INTO SEC 20 & 21



LAW OFFICES OF

CAVNESS, DeROSE, SENNER & FOSTER

BARRY DeROSE  
JACK C. CAVNESS  
GEORGE F. SENNER, JR.  
TOM C. FOSTER  
JOHN W. ROOD  
ALEXANDER RUSSIN  
H. CHARLES ECKERMAN

Globe - May 15, 1967

609 LUHR'S BUILDING  
PHOENIX, ARIZONA 85003  
TELEPHONE 254-6731  
102 S. BROAD STREET  
P. O. BOX 512  
GLOBE, ARIZONA 85501  
TELEPHONE 425-2591  
P. O. BOX 151  
SHOW LOW, ARIZONA 85901  
TELEPHONE 537-2473

Mr. Charles F. Willis  
State Secretary  
Arizona Small Mine Operators Association  
508 Title and Trust Bldg.  
Phoenix, Arizona 85003

Re: Arlene Mining Co., Inc.


Dear Mr. Willis:

I am president of the above corporation. The other stockholders are as follows:

'Burl C. Waddell	'Daniel E. Gurovich
.Loren Chesley	'Whitney R. White
'Frank Banicevich	

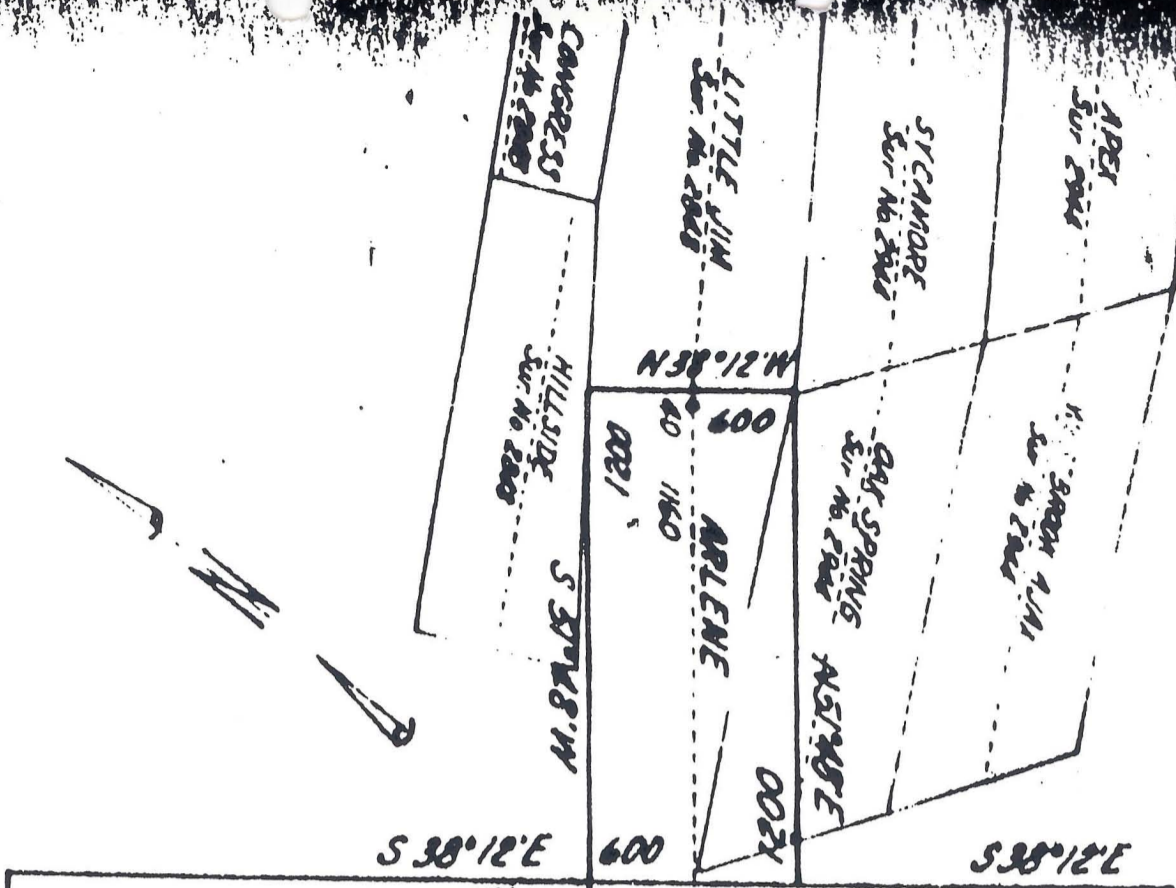
I am enclosing a map of the claims. At present there is no activity.

Sincerely yours,

  
'Barry De Rose  
Attorney at Law

BDR/bw

Enc.



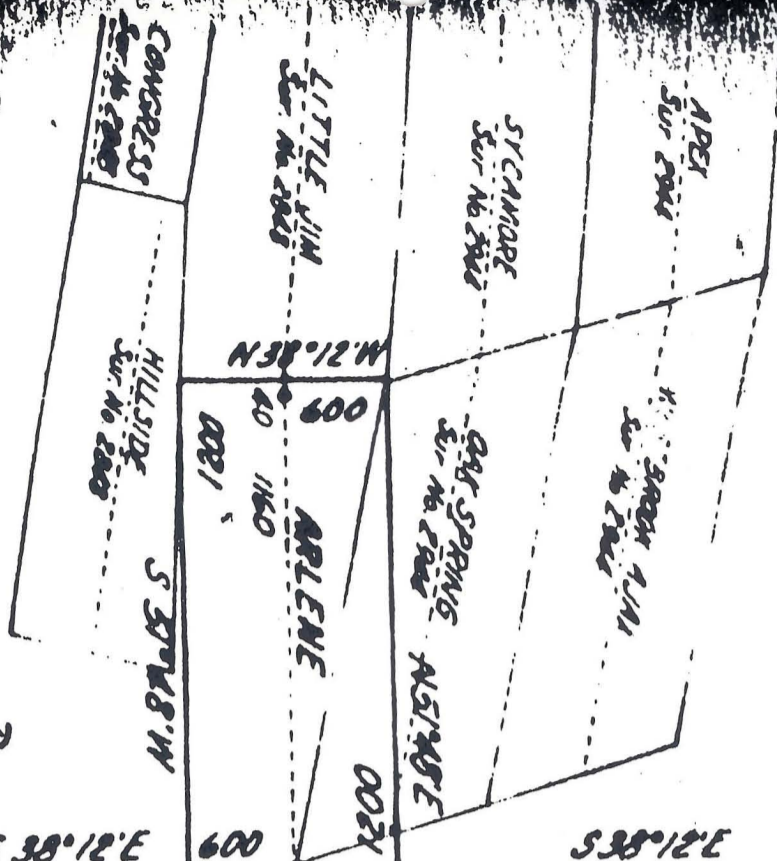
S 38° 12' E		600	S 38° 12' E	
1500	600	1500	600	1500
ARLENE No. 2 1450 50		25	ARLENE No. 1 1415	
1500	600	1500	600	1500
1500		600	1500	
ARLENE No. 4 1490 10		10	ARLENE No. 3 1490	
1500	600	1500	600	1500
1500		600	1500	
ARLENE No. 6 1475 25		25	ARLENE No. 5 1475	
1500	600	1500	600	1500
1500		600	1500	
ARLENE No. 8 1490 10		10	ARLENE No. 7 1490	
1500	600	1500	600	1500
1500		600	1500	
ARLENE No. 10 1490 10		10	ARLENE No. 9 1490	
1500	600	1500	600	1500
1500		600	1500	
ARLENE No. 12 1490 10		10	ARLENE No. 11 1490	
1500	600	1500	600	1500
1500		600	1500	
ARLENE No. 14 1450 50		50	ARLENE No. 13 1490	
1500	600	1500	600	1500
1500		600	1500	

N 51° 48' E

S 51° 48' N

N 38° 12' W

N 38° 12' W



600	1500	600	1500
ARLENE No. 2 1450	25	1475	ARLENE No. 1
1500	600	1500	600
600	1500	600	1500
ARLENE No. 4 1490	10	1490	ARLENE No. 3
1500	600	1500	600
600	1500	600	1500
ARLENE No. 6 1475	25	1475	ARLENE No. 5
1500	600	1500	600
600	1500	600	1500
ARLENE No. 8 1490	10	1490	ARLENE No. 7
1500	600	1500	600
600	1500	600	1500
ARLENE No. 10 1490	10	1490	ARLENE No. 9
1500	600	1500	600
600	1500	600	1500
ARLENE No. 12 1490	10	1490	ARLENE No. 11
1500	600	1500	600
600	1500	600	1500
ARLENE No. 14 1450	50	1490	ARLENE No. 13
1500	600	1500	600

N 51° 48' E

S 51° 48' N

N 38° 12' W

N 38° 12' W