



CONTACT INFORMATION

Mining Records Curator
Arizona Geological Survey
1520 West Adams St.
Phoenix, AZ 85007
602-771-1601
<http://www.azgs.az.gov>
inquiries@azgs.az.gov

The following file is part of the

Arizona Department of Mines and Mineral Resources Mining Collection

ACCESS STATEMENT

These digitized collections are accessible for purposes of education and research. We have indicated what we know about copyright and rights of privacy, publicity, or trademark. Due to the nature of archival collections, we are not always able to identify this information. We are eager to hear from any rights owners, so that we may obtain accurate information. Upon request, we will remove material from public view while we address a rights issue.

CONSTRAINTS STATEMENT

The Arizona Geological Survey does not claim to control all rights for all materials in its collection. These rights include, but are not limited to: copyright, privacy rights, and cultural protection rights. The User hereby assumes all responsibility for obtaining any rights to use the material in excess of "fair use."

The Survey makes no intellectual property claims to the products created by individual authors in the manuscript collections, except when the author deeded those rights to the Survey or when those authors were employed by the State of Arizona and created intellectual products as a function of their official duties. The Survey does maintain property rights to the physical and digital representations of the works.

QUALITY STATEMENT

The Arizona Geological Survey is not responsible for the accuracy of the records, information, or opinions that may be contained in the files. The Survey collects, catalogs, and archives data on mineral properties regardless of its views of the veracity or accuracy of those data.

08/02/88

ARIZONA DEPARTMENT OF MINES AND MINERAL RESOURCES FILE DATA

PRIMARY NAME: ARIZONA VICTORY MINE

ALTERNATE NAMES:

INDEPENDENCE MS 4126
DOLLY CLAIMS
COPPER
IXL

YAVAPAI COUNTY MILS NUMBER: 1090A

LOCATION: TOWNSHIP 12.5N RANGE 1 W SECTION 30 QUARTER N2
LATITUDE: N 34DEG 26MIN 42SEC LONGITUDE: W 112DEG 24MIN 15SEC
TOPO MAP NAME: GROOM CREEK - 7.5 MIN

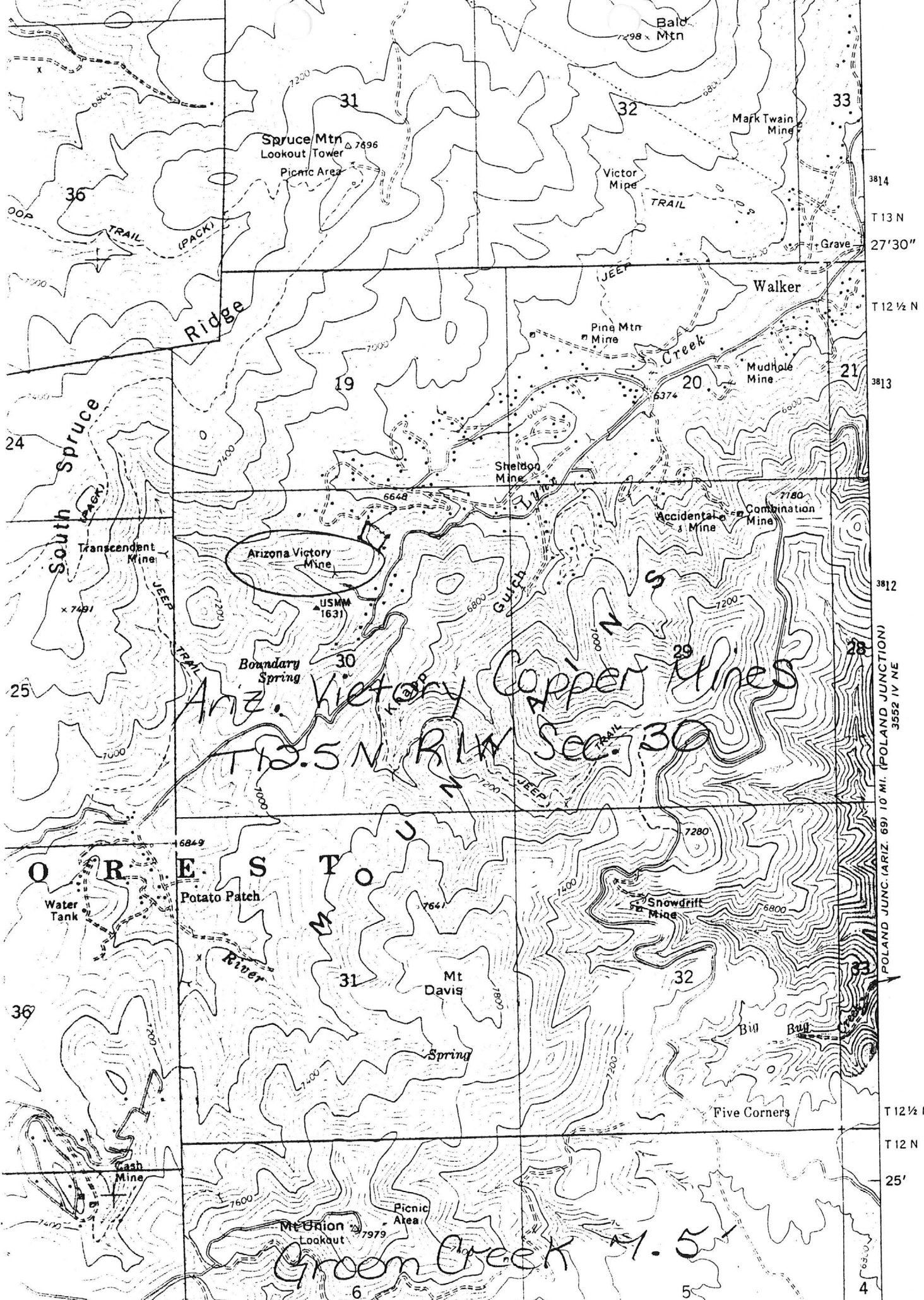
CURRENT STATUS: PAST PRODUCER

COMMODITY:

COPPER
SILVER
LEAD
GOLD

BIBLIOGRAPHY:

USGS GROOM CREEK QUAD
ADMMR ARIZONA VICTORY MINE FILE
BLM MINING DISTRICT SHEET 223 (MS 4126)
AZ MNG JRNL SEPT 1919 P 25. JUN 1919 P 82
BLM AZ MINING CLAIMS FILE 33071

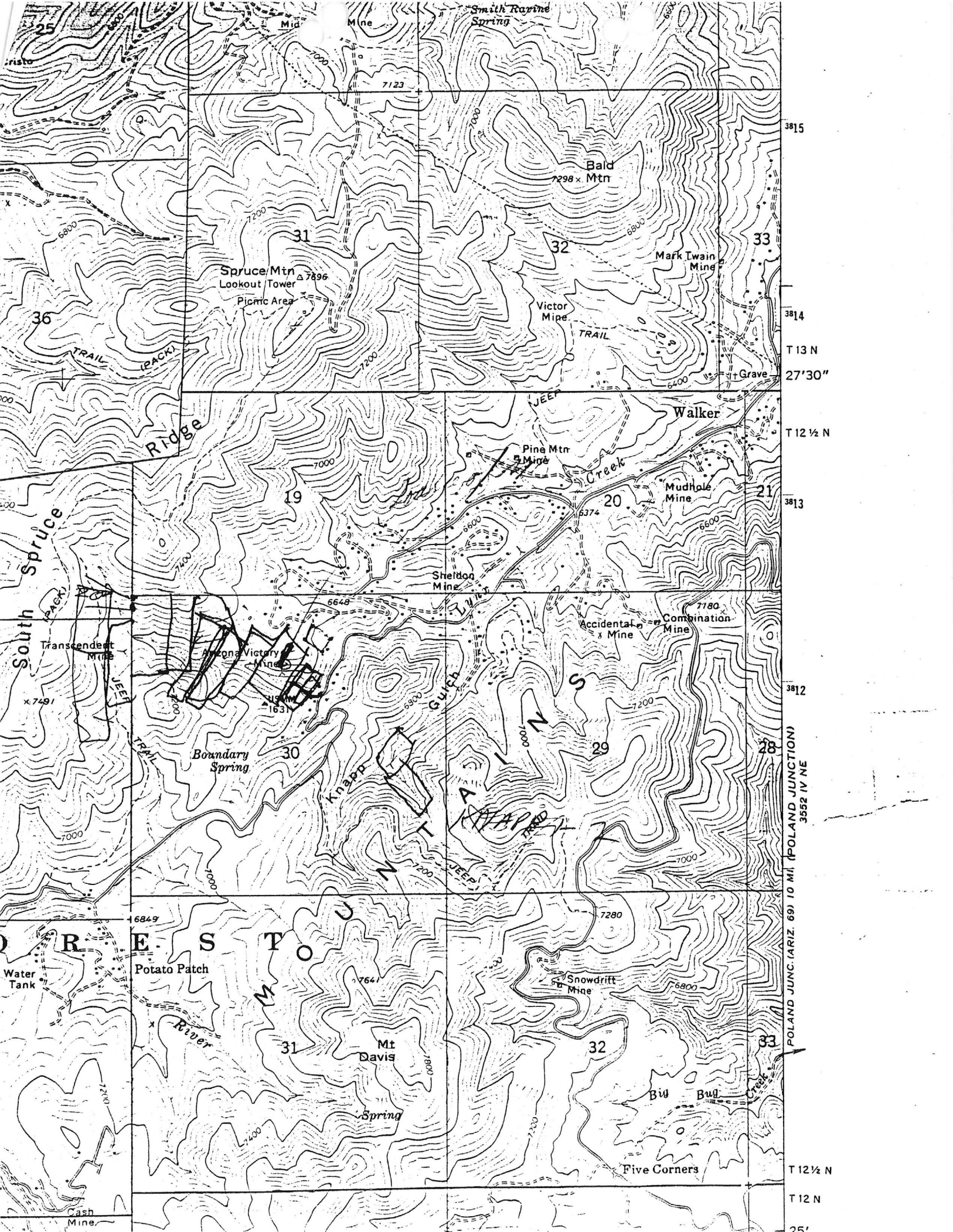


Ariz. Victory Copper Mines
T13.5 N R1W Sec. 30

Green Creek T1.5 N

3814
T 13 N
27'30"
T 12 1/2 N
3813
3812
POLAND JUNC. (ARIZ. 69) 10 MI. (POLAND JUNCTION) 3552 IV NE
T 12 1/2 N
T 12 N
25'

4
5
6



25

36

South Spruce Ridge

R E S T O U

Cash Mine

Mid Mine

31

19

30

31

Smith Ravine Spring

32

20

29

32

Bald Mtn 7298 x

Walker

28

33

33

21

28

33

Spruce Mtn 7896
Lookout Tower
Picnic Area

Victor Mine

Mark Twain Mine

Pine Mtn Mine

Mudhole Mine

Sheldon Mine

Accidental Mine

Combination Mine

Boundary Spring

Knappa

Gurcb

Knappa

Knappa

Knappa

Knappa

Knappa

Knappa

Knappa

Knappa

Knappa

Knappa

Knappa

Knappa

Knappa

Knappa

Transcendent Mine

Water Tank

Potato Patch

River

Mt. Davis

Spring

Snowdritt Mine

Big Bud

Five Corners

3815

3814

3813

3812

7280

T 12 1/2 N

T 12 N

25'

T 13 N
27' 30"

T 12 1/2 N

POLAND JUNC. (ARIZ. 69) 10 MI. (POLAND JUNCTION)
3552 IV NE

SANIAGO PAT. 2349

MANILLA PAT. 2349

HAVANNA PAT. 2349

Sec. 31

Sec. 32

WATER FALL PAT. 1556

JUNBO PAT. 1996
COMSTOCK PAT. 1996

BROOKLYN PAT. 1996

LION PAT. 1966

TREASURY PAT. 1996

GRANITE PAT. 1996

PROPHRY PAT. 1996

IXL No. 1 4126

IXL No. 2 4126

COPPER LODE No. 3 PAT. 4107

INDEPENDENCE No. 2 4126

COPPER LODE No. 1 PAT. 4107

COPPER LODE No. 2 PAT. 4107

CINCINNATI PAT. 2347

Sec. 30

NINETY SEVEN PAT. 1631

DYSON PAT. 3998

NINETY EIGHT PAT. 4107

INDEPENDENCE No. 2 4126

COPPER LODE No. 1 PAT. 4107

COPPER LODE No. 2 PAT. 4107

HOOPER PAT. 4107

LOVEKIN PAT. 3998

SHELTON PAT. 1355

MARY PAT. 4107

ELLINGTON PAT. 3998

NEW STRIKE PAT. 3998

MARY PAT. 4107

FLORENCE PAT. 3998

NEW STATE PAT. 1359

PARAPAT PAT. 1359

WILLETTS PAT. 3998

EAGLE PAT. 3998

EUREKA PAT. 1173

MONROE PAT. 3998

HIDDEN TREASURE PAT. 1603

LUTHER JUNIOR PAT. 3998

THE PENN PAT. 3998

GOLDEN FLEECE No. 4 PAT. 1589

GOLDEN FLEECE No. 1 PAT. 1589

PRESIDENT PAT. 1995

FLOW PAT. 1995

WELLS FARGO PAT. 1995

GOLDEN QUEEN No. 2 PAT. 1841

C. P. HUNTINGTON PAT. 1995

JOHN D. ROCKEFELLER PAT. 1995

SANTA ELMO PAT. 1841

GOLDEN QUEEN No. 1 PAT. 1841

EMMA PAT. 1841

STOCK BRIDGE PAT. 1841

GOLDEN FLEECE No. 4 PAT. 1589

GOLDEN FLEECE No. 1 PAT. 1589

Sec. 29

WOOD 797

ARIZONA DEPARTMENT OF MINES AND MINERAL RESOURCES

INFORMATION FROM MINE CARDS IN MUSEUM

Usa Az.
Yavapai Co.
Az. Victory

MM N 774 Malachite
N 775 Covellite
N

FILE - ARIZONA

1090A
4-ARAZ
ARIZONA Victory mine (file)

DEPARTMENT OF MINERAL RESOURCES
STATE OF ARIZONA
FIELD ENGINEERS REPORT

Mine Arizona Victory Copper Mines

Date Sept. 20, 1954

District Walker

Engineer Mark Gemmill

Subject: Present Status

No information available as to the Company, location of property or ownership at present. There is very little activity in the area.

ARIZONA VICTORY
Cu
Yavapai 13 - 4 T 12 $\frac{1}{2}$ N, R 1 W Walker D. 4.
Sec 30 CN 2 '44
on Quad map

September 18, 1944

Mrs. Mary C. Keopfer
3525 Chippenn Street
St. Louis 18, Missouri

Dear Mrs. Keopfer:

The Department has no information in its files regarding the Arizona Victory Copper Mines at Walker but the writer happens to know the property personally and if you will write to Mr. Joe Berg at Prescott, we are sure he can give you up to date information.

Mr. Mark Bradley, who formerly operated the mine, passed away somewhat over a year ago.

Yours very truly,

Chas. H. Dunning
Director

CHD:LP

CC: Mr. Joe Berg
Prescott, Arizona

DEPT. MINERAL RESOURCES
RECEIVED
SEP 18 1944
PHOENIX, ARIZONA

Sept 14. 1944
Mr J S Caspal

Arizona Dept MR

413 Home Bldg Bldg

Phoenix Arizona

Dear Sir

Could you give me
any information in regard
to

Arizona Victory Copper
Mines Corporation
located in

Walker Mining District
at Walker, Yavapai
County Arizona? Is this
mine in operation at the
present time? Could you
give me the names of
any of its officers?
Thanking you in

anticipation of an
early reply. I am

Very truly

(Mrs) Mary C Kopper

3525 Chippena St

St. Louis - 18 - Mo