



## **CONTACT INFORMATION**

Mining Records Curator  
Arizona Geological Survey  
1520 West Adams St.  
Phoenix, AZ 85007  
602-771-1601  
<http://www.azgs.az.gov>  
[inquiries@azgs.az.gov](mailto:inquiries@azgs.az.gov)

The following file is part of the

Arizona Department of Mines and Mineral Resources Mining Collection

## **ACCESS STATEMENT**

These digitized collections are accessible for purposes of education and research. We have indicated what we know about copyright and rights of privacy, publicity, or trademark. Due to the nature of archival collections, we are not always able to identify this information. We are eager to hear from any rights owners, so that we may obtain accurate information. Upon request, we will remove material from public view while we address a rights issue.

## **CONSTRAINTS STATEMENT**

The Arizona Geological Survey does not claim to control all rights for all materials in its collection. These rights include, but are not limited to: copyright, privacy rights, and cultural protection rights. The User hereby assumes all responsibility for obtaining any rights to use the material in excess of "fair use."

The Survey makes no intellectual property claims to the products created by individual authors in the manuscript collections, except when the author deeded those rights to the Survey or when those authors were employed by the State of Arizona and created intellectual products as a function of their official duties. The Survey does maintain property rights to the physical and digital representations of the works.

## **QUALITY STATEMENT**

The Arizona Geological Survey is not responsible for the accuracy of the records, information, or opinions that may be contained in the files. The Survey collects, catalogs, and archives data on mineral properties regardless of its views of the veracity or accuracy of those data.

05/19/88

ARIZONA DEPARTMENT OF MINES AND MINERAL RESOURCES FILE DATA

PRIMARY NAME: ARIZONA TOM REED

ALTERNATE NAMES:

TRIO  
LILAH  
HEALTH AND WEALTH

MOHAVE COUNTY MILS NUMBER: 32H

LOCATION: TOWNSHIP 19 N RANGE 20 W SECTION 21 QUARTER N2  
LATITUDE: N 35DEG 01MIN 27SEC LONGITUDE: W 108DEG 24MIN 42SEC  
TOPO MAP NAME: OATMAN - 7.5 MIN

CURRENT STATUS: PAST PRODUCER

COMMODITY:

GOLD LODE

BIBLIOGRAPHY:

ADMMR MOHAVE CUSTOM MILL PROJECT  
SCHRADER, F.C. "MIN. DPSTS OF CRBT RNGE, BLCK  
MTNS, GRND WSH CLFS, AZ" USGS BULL 397 P 182  
186-190, 1909  
WEED'S MINES HANDBOOK, VOL. XVI, P 246, 1925  
RAND'S MINES HANDBOOK VOL. XVIII, P 261, 1931  
ADMMR TOM REED MAP, HAFF&COLWELL MAP, UPSTAIR  
ADDITIONAL WORKINGS SEC. 16 NWSWSE T19N-R20W

ARIZONA-TOM REED MINE

REFERENCES

MOHAVE COUNTY  
SAN FRANCISCO DIST.  
T19N R02W Sec. 21 N $\frac{1}{2}$

Mohave County MILS Index #32H

No MILS Printout, but printout in "MILS Sheets for Mohave County Lost Basin Gold Basin Districts plus other districts in Northern Mohave County"

AKA: Tom Reed Gold Mines Co., German American Group, Sawyer Petroleum Co.

BLM District Map

Householder Map

Mohave Custom Mills Proj. card index

Mohave Minerals and Prospect file index map

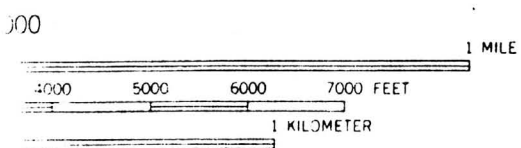
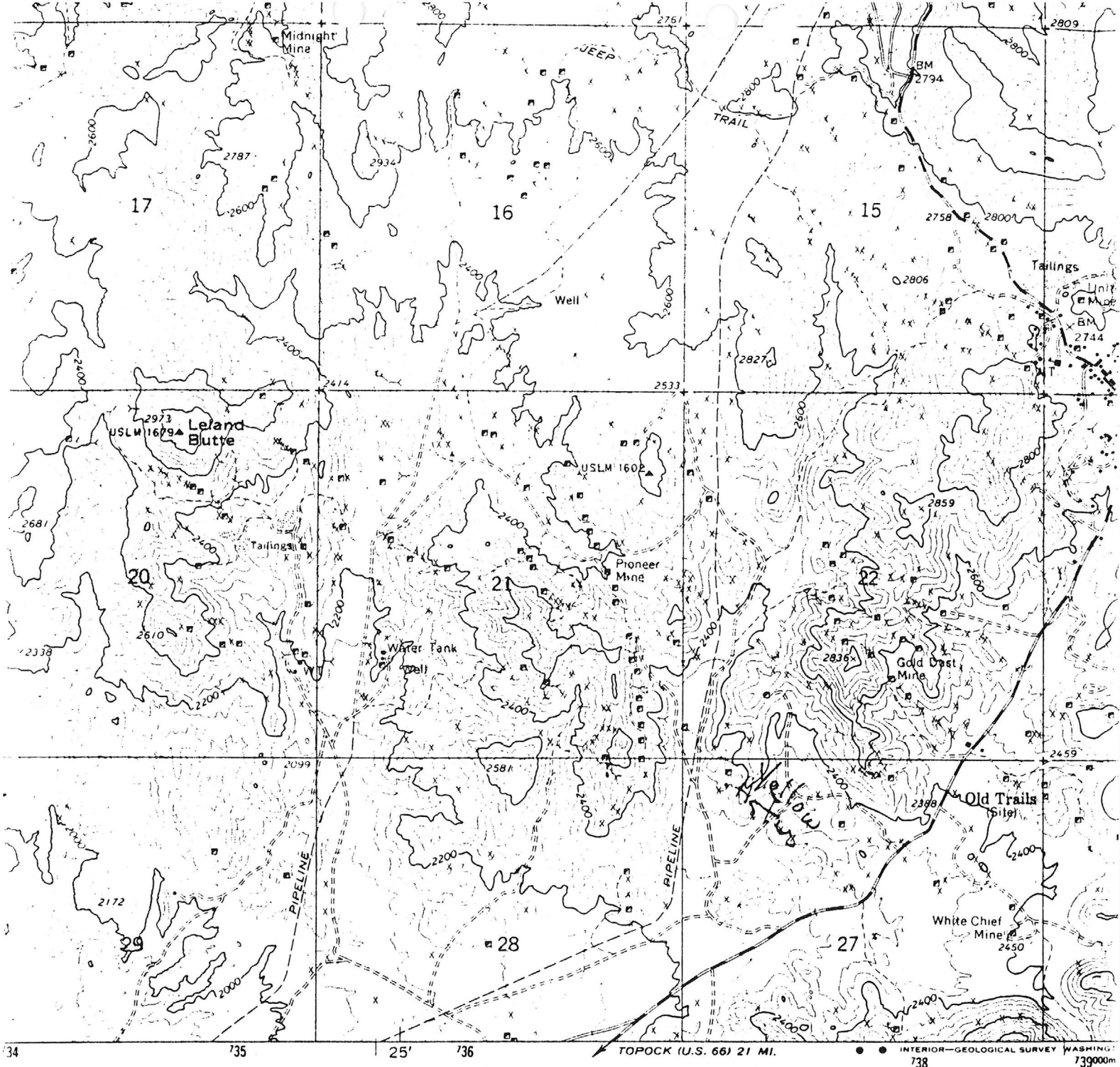
The Mines Handbook Vol. XVIII, 1931, p. 26

USGS 517, p. 182, 186-190

United Eastern Mine (file), Haff & Colwell Map

The Mines Handbook Vol. XVI, 1925, p. 246

Oatman, AZ 7.5' Topo (included in file)



1000 FEET  
SEA LEVEL



QUADRANGLE LOCATION

ROAD CLASSIFICATION  
 Medium-duty ——— Light-duty  
 Unimproved dirt = = = =

MAP ACCURACY STANDARDS  
 COLORADO 80225, OR WASHINGTON, D. C. 20242  
 SYMBOLS IS AVAILABLE ON REQUEST

OATM  
 N3500-

ARIZONA DEPARTMENT OF MINERAL RESOURCES  
MINERAL BUILDING, FAIRGROUNDS  
PHOENIX, ARIZONA

August 20, 1958

To the Owner or Operator of the Arizona Mining Property named below:

Trio, Lilah, Health and Wealth (Mohave County) gold  
(Property) (ore)  
(Arizona-Tom Reed Gold Mines Company)

We have an old listing of the above property which we would like to have brought up to date.

Please fill out the enclosed Mine Owner's Report form with as complete detail as possible and attach copies of reports, maps, assay returns, shipment returns or other data which you have not sent us before and which might interest a prospective buyer in looking at the property.

*Frank P. Knight*

FRANK P. KNIGHT,  
Director.

SOURCES

nds

Enc: Mine Owner's Report

PHOENIX  
AUG 20  
6:00 PM  
1958  
ARIZ.

OPENED BY MISTAKE  
LEAH AND TOM REED GOLD MINES CO.  
NOW LAWYER TETRAEON CO.

Arizona Tom Reed Gold Mines Company  
Oatman  
Arizona

R.H.

EXHIBIT "B"  
DESCRIPTION OF REAL ESTATE.

REPORT  
ON THE PROPERTY OF  
THE  
ARIZONA-TOM REED GOLD MINES COMPANY  
CATMAN, ARIZONA.

LOCATION:

The property is in the Tom Reed-Gold Road District, Ariz., 37 miles southwest of Kingman, 12 miles west of Catman and 25 miles northeast of Topock, Arizona. Kingman and Topock are shipping points on the Main line of the Santa Fe R.R. Connections exist with these points by telephone, telegraph, good wagon roads, daily auto stage and mail service.

MINES, TITLE AND AREA:

The Company owns the TRIO, LILAH, HEALTH and WEALTH mining claims. The Trio and Lilah are patented mines under U.S. Mineral Survey No. 2970 and have an area of 28.9 acres; the Health and Wealth mining claims are held by location and feed and cover 24.5 acres, total area 53.4 acres.

TOPOGRAPHY AND GEOLOGY:

The altitude of the volcanic hills in which the mines of this district are situated is between 2,000 and 4,000 feet elevation. A geological study of the locality defines three prominent parallel vein systems, striking Northwest--Southeast. The Gold Road system at an elevation of 3,000 feet, the Tom Reed and United Eastern, elevation 2,700 feet and the Pioneer vein system at 2,400 feet. The Arizona-Tom Reed Gold Mines Company's mines are integral parts of the Pioneer system.

The country rock in which the best shoots of ore in the district are found is andesite.

The vein system in the property of the Arizona-Tom Reed Gold Mines Co. is shown on the attached sketch map and has over 2,000 feet in length of vein outcrop. The Trio vein is the continuation of the main Pioneer vein and ore shoots, and endlines with the Pioneer Mine 650 feet North of the Pioneer Shaft No. 1. The Pioneer vein and North ore shoot enter the Trio ground at this point. The Lilah vein is on the hanging wall (East) side of the andesite dike, (on the footwall side of which the big Pioneer

ore shoots occur) and strikes diagonally across the Lilah Mine from the southeast corner <sup>of the Lilah</sup> and parallels the side line of the Pioneer Mine, just East and opposite the Pioneer No. 1 Shaft and ore shoot.

The Lilah vein crosses a well defined fault at the location monument, about the center of the Lilah claim. This fault strikes East and West and is the effect of a dynamic force exerted from the West. This fault and the relative location of the ore shoots on the Pioneer and the Arizona-Tom Reed Gold Mines Co's property are identical with the fault condition existing where the principal Tom Reed ore shoot on the footwall and the United Eastern ore shoot on the hanging wall of the andesite dike have been developed. On its Northerly course the Lilah vein outcrops persistently and merges with the Trio vein about 550 feet North of the South end line of the Trio Mine. The vein is nearly vertical at the cross-fracture but gradually inclines to the West on its course; at the junction with the Trio vein the dip is approximately 65 degrees to the West. The Wealth mining claim covers a branch of the Trio vein and the Health mining claim covers several branch veins from the fault <sup>zone</sup> and the continuation of the Wealth lode.

The Trio-Lilah vein filling is identical with the United Eastern, Tom Reed and Gold Road Mines. The ores of the district -without apparent difference in ~~character~~ occur in veins along or within intrusive <sup>andesite</sup> dikes in contact with the several flows as proven by the development of the Tom Reed to 1,075 ft. the United Eastern to 600 ft. the Gold Road to 1,100 ft and the Pioneer to 400 ft. depth.

Such Geological authorities as F. C. Schrader, (U.S. Govt. Survey), Dr. Walter Harvey Wood of New York and Mr. Howland Bancroft of Denver, have examined the Tom Reed-Gold Road District and the consensus of their opinion is, that the rocks of the district have been formed by a series of flows which were subsequently penetrated by intrusive andesite dikes.

F. C. Schrader's report is known as Bulletin No. 397 of the

U. S. Geological Survey published in 1909; Dr. Woods report was published in the Chicago Mining World in 1912 and on a recent visit to the district after examining several properties, he unhesitatingly expressed his opinion through the press; Mr. Baneroffs conclusions and his interpretation of Mr. Schraders report were published in the Mining and Scientific Press of San Francisco, July 3rd, 1915.

My personal observations of the district cover several years. I have watched the development of the Cold Road, Tom Reed and United Eastern from mere prospects and at the time of the failure of the Tom Reed, when it was sold under the Sheriff's hammer, I sampled and examined the property, and while the best assay was only \$4.00<sup>per ton</sup> and the average only \$1.20 per ton to the 200 ft level, and although the Tom Reed Mine looked hopeless to others, I recommended to my principals the purchase and development of the property. I mention this because the work recommended by me at that time has since developed the famous Tom Reed Mine and ore shoots which have produced more than four millions in gold bullion and paid over two millions<sup>dollars</sup> in dividends.

I first came to this district as Supt. of the Pioneer Mine and have had entire supervision of its development. While engaged in this work I made a very careful geological ~~study~~ of the property now owned by the Arizona-Tom Reed Gold Mines Co. and unhesitatingly state that the high grade ore shoot on the North end of the Pioneer Mine, (on account of its dip and trend) will be found in depth to be within the area of the Eric Mine. The fault fracture which unquestionably created the ore shoot in the Pioneer Mine extends into and across the property of the Arizona-Tom Reed and is the source of the ore shoot recently discovered in the Lilah vein.

#### ORES AND VALUES:

The Northerly continuation of the Pioneer vein outcrops on the Eric Mine (as veins of quartz containing adularia and subhematite) in the green chloritic andesite dike. A number of tons of high grade ore have been shipped from a 50 ft. shaft on the



Trio Mine and netted the original locator Al. James several thousand dollars. I consider the Trio outcrop for 500 feet in length the very best indication for the development of a shoot of rich ore in depth.

The Lilah vein outcrops strong and well defined its entire length and the vein widens to 15 and 20 feet in several places. The vein shows some gold values its entire length but the best showing is opposite the Pioneer No. 1 Shaft and ore shoot, just North of the fault zone; here the apex of an ore shoot has been uncovered from  $2\frac{1}{2}$  to 4 feet wide and extends for 300 feet in length.

The values <sup>(from my samples)</sup> on the surface are from \$3.00 to \$10.00 per ton in gold, being higher than the usual surface values in this district, and much better than the surface values on either the Tom Reed or United Eastern. The difference in elevation of the Lilah and the United Eastern makes the apex of the Lilah ore shoot about the same horizon as the United Eastern at 300 ft below the surface.

#### CONCLUSIONS:

To Summarize the facts as they exist:-

The Arizona-Tom Reed veins are within the intrusive andesite dike.

The Lilah vein is a fissure vein connected with the big fault of the Pioneer Mine.

The Trio vein is the continuation of the Pioneer vein into the Arizona-Tom Reed ground.

The North ore shoot of the Pioneer on its dip and trend will enter the Trio ground in depth.

(5)

stringers on the surface.

The United Eastern ore shoot bears the same relation to the fault fracture of the Tom Reed Mine, that the Arizona-Tom Reed ore shoot bears to the fault fracture of the Pioneer Mine; the Lilah vein and ore shoot being on the hanging wall side of the andesite dike, same as the United Eastern is on the hanging wall side of the Tom Reed andesite dike.

Based on these facts and conditions, the Arizona-Tom Reed Gold Mines Co. property offers an excellent opportunity for the development of large bodies of pay ore. In my judgement this property warrants sinking a shaft to 500 ft depth and lateral exploration of the veins, as it has every indication for the successful development of ore shoots equal to any in the district.

Respectfully

*George F. Moser*

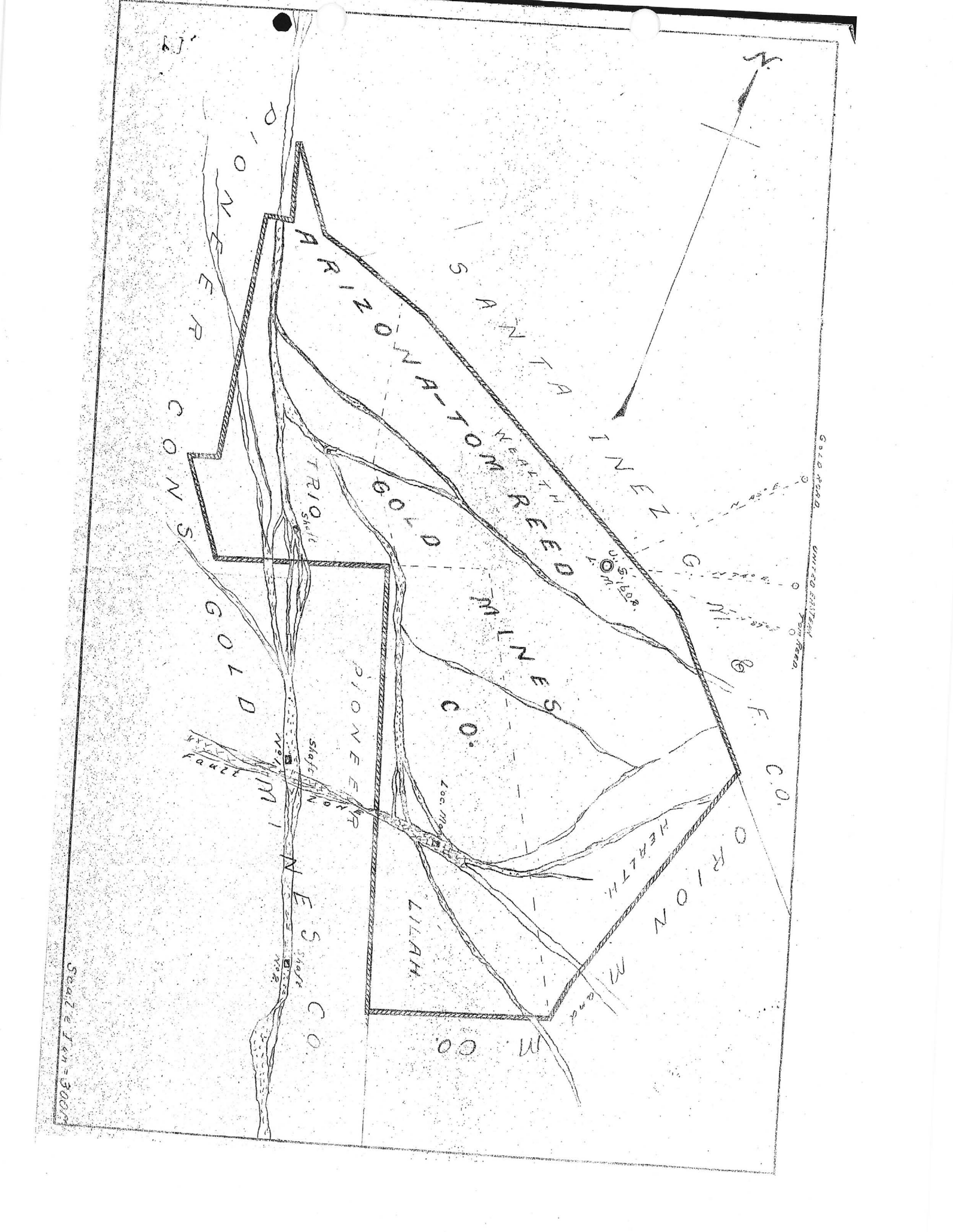


EXHIBIT "B"  
DESCRIPTION OF REAL ESTATE.

REPORT  
ON THE PROPERTY OF  
THE  
ARIZONA-TOM REED GOLD MINES COMPANY  
CATMAN, ARIZONA.

LOCATION:

The property is in the Tom Reed-Gold Road District, Ariz., 27 miles Southwest of Kingman, 1 1/2 miles West of Catman and 25 miles Northeast of Topeck, Arizona. Kingman and Topeck are shipping points on the Main line of the Santa Fe R.R. Connections exist with these points by telephone, telegraph, good wagon roads, daily auto stage and mail service.

MINES, TITLE AND AREA:

The Company owns the TRIO, LILAH, HEALTH and WEALTH mining claims. The Trio and Lilah are patented mines under U.S. Mineral Survey No. 2870 and have an area of 28.9 acres; the Health and Wealth mining claims are held by location and deed and cover 24.5 acres, total area 53.4 acres.

TOPOGRAPHY AND GEOLOGY:

The altitude of the volcanic hills in which the mines of this district are situated is between 2,000 and 4,000 feet elevation. A geological study of the locality defines three prominent parallel vein systems, striking Northwest--Southeast. The Gold Road system at an elevation of 3,000 feet, the Tom Reed and United Eastern, elevation 2,700 feet and the Pioneer vein system at 2,400 feet. The Arizona-Tom Reed Gold Mines Companies mines are integral parts of the Pioneer system.

The country rock in which the best shoots of ore in the district are found is andesite.

The vein system in the property of the Arizona-Tom Reed Gold Mines Co. is shown on the attached sketch map and has over 3,000 feet in length of vein outcrop. The Trio vein is the continuation of the main Pioneer vein and ore shoots, and endlines with the Pioneer Mine 650 feet North of the Pioneer Shaft No. 1. The Pioneer vein and North ore shoot enter the Trio ground at this point. The Lilah vein is on the hanging wall (East) side of the andesite dike, (on the footwall side of which the big Pioneer

ore shoots occur) and strikes diagonally across the Lilah Mine from the southeast corner <sup>of the Lilah</sup> and parallels the side line of the Pioneer Mine, just East and opposite the Pioneer No. 1 shaft and ore shoot.

The Lilah vein crosses a well defined fault at the location monument, about the center of the Lilah claim. This fault strikes East and West and is the effect of a dynamic force exerted from the West. This fault and the relative location of the ore shoots on the Pioneer and the Arizona-Tom Reed Gold Mines Co's property are identical with the fault condition existing where the principal Tom Reed ore shoot on the footwall and the United Eastern ore shoot on the hanging wall of the andesite dike have been developed. On its Northerly course the Lilah vein outcrops persistently and merges with the Trio vein about 550 feet North of the south end line of the Trio Mine. The vein is nearly vertical at the cross-fracture but gradually inclines to the West on its course; at the junction with the Trio vein the dip is approximately 65 degrees to the West. The Wealth mining claim covers a branch of the Trio vein and the Health mining claim covers several branch veins from the fault <sup>zone</sup> and the continuation of the Wealth lode.

The Trio-Lilah vein filling is identical with the United Eastern, Tom Reed and Gold Road Mines. The ores of the district -without apparent difference in ~~character~~ <sup>andesite</sup> occur in veins along or within intrusive <sup>andesite</sup> dikes in contact with the several flows as proven by the development of the Tom Reed to 1,075 ft. the United Eastern to 600 ft. the Gold Road to 1,100 ft and the Pioneer to 400 ft. depth.

Such Geological authorities as F. C. Schrader, (U.S. Govt. Survey), Dr. Walter Harvey Weed of New York and Mr. Howland Bancroft of Denver, have examined the Tom Reed-Gold Road District and the consensus of their opinion is, that the rocks of the district have been formed by a series of flows which were subsequently penetrated by intrusive andesite dikes.

F. C. Schraders report is known as Bulletin No. 397 of the

U. S. Geological Survey published in 1909; Dr. Woods report was published in the Chicago Mining World in 1912 and on a recent visit to the district after examining several properties, he unhesitatingly expressed his opinion through the press; Mr. Bancrofts conclusions and his interpretation of Mr. Schraders report were published in the Mining and Scientific Press of San Francisco, July 3rd, 1915.

My personal observations of the district cover several years. I have watched the development of the Cold Road, Tom Reed and United Eastern from mere prospects and at the time of the failure of the Tom Reed, when it was sold under the Sheriffs hammer, I sampled and examined the property, and while the best assay was only \$4.00<sup>per ton</sup> and the average only \$1.20 per ton to the 200 ft level, and although the Tom Reed Mine looked hopeless to others, I recommended to my principals the purchase and development of the property. I mention this because the work recommended by me at that time has since developed the famous Tom Reed Mine and ore shoots which have produced more than four millions in gold bullion and paid over two millions<sup>dollars</sup> in dividends.

I first came to this district as Supt. of the Pioneer Mine and have had entire supervision of its development. While engaged in this work I made a very careful geological ~~investigation~~ of the property now owned by the Arizona-Tom Reed Gold Mines Co. and unhesitatingly state that the high grade ore shoot on the North end of the Pioneer Mine, (on account of its dip and trend) will be found in depth to be within the area of the Erie Mine. The fault fracture which unquestionably created the ore shoot in the Pioneer Mine extends into and across the property of the Arizona-Tom Reed and is the source of the ore shoot recently discovered in the Lilah vein.

#### ORES AND VALUES:

The Northerly continuation of the Pioneer vein outcrops on the Erie Mine (as veins of quartz containing adularia and cube hematite) in the green chloritic andesite dike. A number of tons of high grade ore have been shipped from a 50 ft. shaft on the

Trio Mine and netted the original locator Al. James several thousand dollars. I consider the Trio outcrop for 500 feet in length the very best indication for the development of a shoot of rich ore in depth.

The Lilah vein outcrops strong and well defined its entire length and the vein widens to 15 and 20 feet in several places. The vein shows some gold values its entire length but the best showing is opposite the Pioneer No. 1 Shaft and ore shoot, just North of the fault zone; here the apex of an ore shoot has been uncovered from 2½ to 4 feet wide and extends for 300 feet in length.

The values <sup>(from my samples)</sup> on the surface are from \$3.00 to \$10.00 per ton in gold, being higher than the usual surface values in this district, and much better than the surface values on either the Tom Reed or United Eastern. The difference in elevation of the Lilah and the United Eastern makes the apex of the Lilah ore shoot about the same horizon as the United Eastern at 300 ft below the surface.

#### CONCLUSIONS:

To Summarize the facts as they exist:-

The Arizona-Tom Reed veins are within the intrusive andesite dike.

The Lilah vein is a fissure vein connected with the big fault of the Pioneer Mine.

The Trio vein is the continuation of the Pioneer vein into the Arizona-Tom Reed ground.

The North ore shoot of the Pioneer on its dip and trend will enter the Trio ground in depth.

(5)

stringers on the surface.

The United Eastern ore shoot bears the same relation to the fault fracture of the Tom Reed Mine, that the Arizona-Tom Reed ore shoot bears to the fault fracture of the Pioneer Mine; the Lilah vein and ore shoot being on the hanging wall side of the andesite dike, same as the United Eastern is on the hanging wall side of the Tom Reed andesite dike.

Based on these facts and conditions, the Arizona-Tom Reed Gold Mines Co. property offers an excellent opportunity for the development of large bodies of pay ore. In my judgement this property warrants sinking a shaft to 500 ft depth and lateral exploration of the veins, as it has every indication for the successful development of ore shoots equal to any in the district.

Respectfully

*George F. Maser*



