



## **CONTACT INFORMATION**

Mining Records Curator  
Arizona Geological Survey  
1520 West Adams St.  
Phoenix, AZ 85007  
602-771-1601  
<http://www.azgs.az.gov>  
[inquiries@azgs.az.gov](mailto:inquiries@azgs.az.gov)

The following file is part of the

Arizona Department of Mines and Mineral Resources Mining Collection

## **ACCESS STATEMENT**

These digitized collections are accessible for purposes of education and research. We have indicated what we know about copyright and rights of privacy, publicity, or trademark. Due to the nature of archival collections, we are not always able to identify this information. We are eager to hear from any rights owners, so that we may obtain accurate information. Upon request, we will remove material from public view while we address a rights issue.

## **CONSTRAINTS STATEMENT**

The Arizona Geological Survey does not claim to control all rights for all materials in its collection. These rights include, but are not limited to: copyright, privacy rights, and cultural protection rights. The User hereby assumes all responsibility for obtaining any rights to use the material in excess of "fair use."

The Survey makes no intellectual property claims to the products created by individual authors in the manuscript collections, except when the author deeded those rights to the Survey or when those authors were employed by the State of Arizona and created intellectual products as a function of their official duties. The Survey does maintain property rights to the physical and digital representations of the works.

## **QUALITY STATEMENT**

The Arizona Geological Survey is not responsible for the accuracy of the records, information, or opinions that may be contained in the files. The Survey collects, catalogs, and archives data on mineral properties regardless of its views of the veracity or accuracy of those data.

01/02/97

ARIZONA DEPARTMENT OF MINES AND MINERAL RESOURCES FILE DATA

PRIMARY NAME: ARIZONA SPAR-BARITE

ALTERNATE NAMES:

MARICOPA COUNTY MILS NUMBER: 186

LOCATION: TOWNSHIP 5 N RANGE 10 W SECTION 34 QUARTER S2  
LATITUDE: N 33DEG 43MIN 03SEC LONGITUDE: W 113DEG 19MIN 13SEC  
TOPO MAP NAME: LONE MOUNTAIN - 15 MIN

CURRENT STATUS: DEVEL DEPOSIT

COMMODITY:

BARIUM WITHERITE  
FLUORINE FLUORSPAR

BIBLIOGRAPHY:

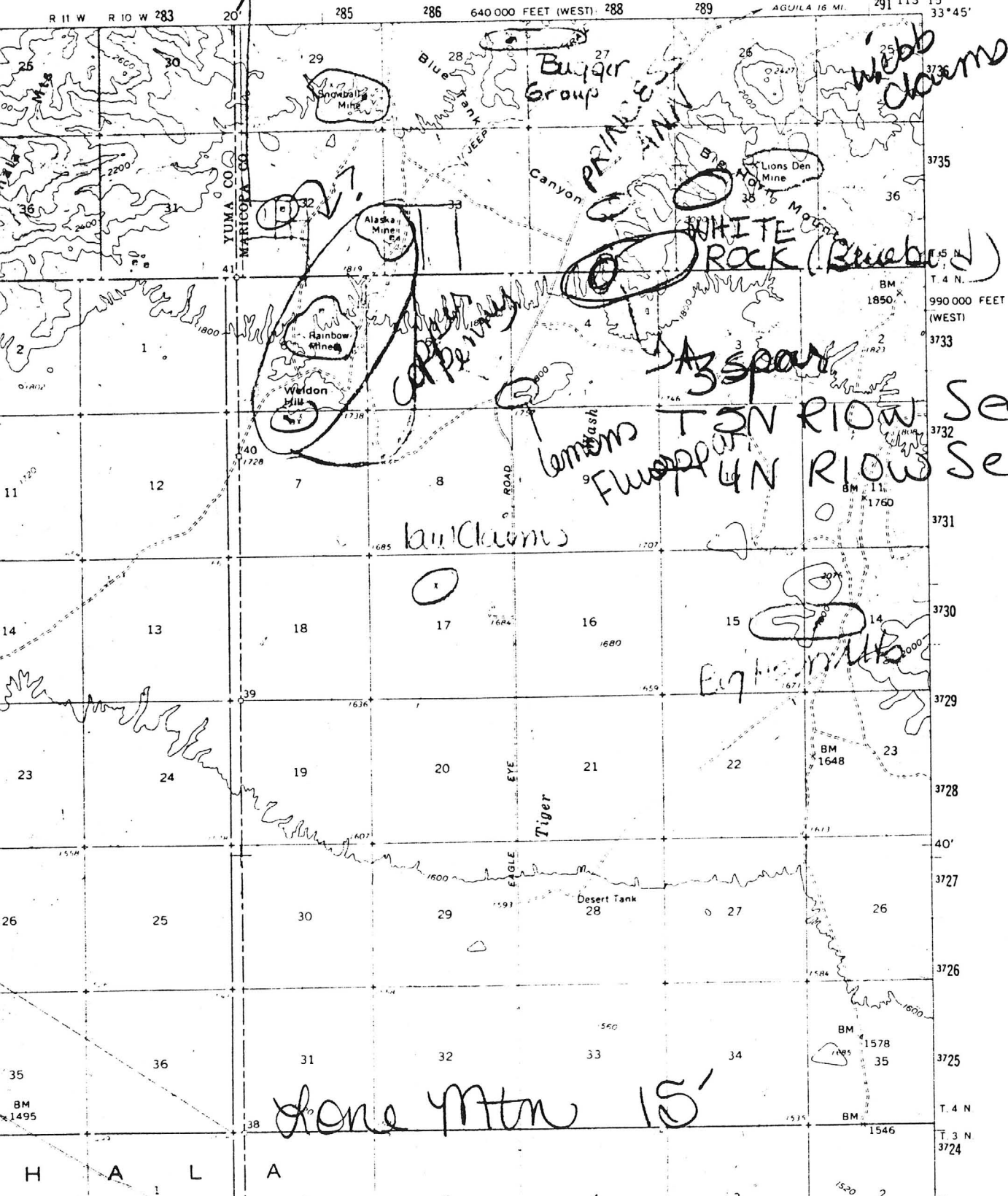
USGS LONE MTN QUAD  
ADMMR AZ SPAR-BARITE FILE

Gunsight?

11 ✓ *unmanned*

LONE MOUNTAIN QUADRANGLE  
ARIZONA  
15 MINUTE SERIES (TOPOGRAPHIC)

3351' (AGUILA)



webb claims

PRINCE CANYON

WHITE ROCK (Bluebird)

AZSPAR

TAN RIOR

FLUOROP

bullclams

Eagle Mtn

Lone Mtn 15'

Sec. 34.35  
Sec 4

ARIZONA SPAR-BARITE

MARICOPA  
Big Horn Dist.

KP/WR 1/16/80 - Mr. Victor Arnold, Sun Mining Co., reported they plan to mine barite from the Daniel Williams' property known as the Arizona Spar Barite Mine, Big Horn Dist., Maricopa County. They have received a contract from a firm known as Chemtek for 5,000 tons of crude barite. He also reported a firm known as Big Eye, "I" ?) Barite may become involved.

---

CJH WR 8/22/80: Phone Call: Daniel Williams, 1919 W. 18th Place, Yuma, Arizona 85364, reported that a company has been formed to mine and process barite from the old Arizona Spar-Barite property in Maricopa County, south of Aguila (see mine file). The company is North American Mining and Engineering. It is New York based but incorporated in Arizona. President Arthur McConnell, VicePresident William McConnell (brothers), Secretary Dr. C.E. Anthony -- all of New York City. Daniel Williams is General Manager. \$500,000 will be deposited in a Phoenix bank for corporate use. Assets are estimated at \$3-5 Million. Mr. Williams is planing to move to Wickenburg. The first action to be taken is the drilling of a water well. The barite will be sold and shipped to the GeoTech or Drillchem Corporations of Houston, Texas (both are supposed to be the same company). A Mr. Dean Cameron is the company representative. Mr. Victor Arnold reportedly has abandoned the property.

---

MEMORANDUM:

TO: John H. Jett, Director  
FROM: Mike Greeley, Field Engineer  
SUBJECT: Arizona Spar-Barite prospect, Maricopa Co.  
DATE: January 23, 1979

On January 4, 1979, I drove to Aguila, AZ, to visit the Arizona Spar-Barite prospect owned by Messrs. Daniel E. Williams (1919 W. 18th Pl., Yuma, AZ, Ph 783-2207, Andrew J. Johannsen (3380 S. 4th Ave., Yuma, AZ, Ph 726-8308), and E. H. Kreuger (2625 Ave "A", Yuma, AZ 85364). Mr. Williams' son, Daniel E. Williams II (1217 8th Ave., Yuma, Az, Ph 782-3150) is also involved either as an employee or as partner; he was my original contact.

The prospect is covered by six lode claims. Five of the claims are contiguous and consist of the "Arizona Spar-Barite #1, #1A, #1B, #1C, and #1D". The sixth, separate claim is known as the "Arizona Spar-Barite #2". These claims are in Sections 34 & 35, T 5 N, R 10 W, and Section 4, T 4 N, R 10 W.

The area is in the Big Horn Mountains and is mapped on the Lone Mountain, 15 minute topographic quadrangle. Access to the property is gained by driving south from Aguila on the Eagle Eye Blvd., a dirt road well maintained by the County, 17.7 miles to a dirt road that trends easterly across Tiger Wash. This road has been "re-graded" beyond an adit to a point near a topographic saddle, above the adit. At the time of my visit, the upper portion of the road was essentially impassable and dangerous to drive on.

South of this road, on the Eagle Eye Rd., approximately 1/2 mile and 1 mile respectively are turn-offs to 2 other prospects, located east of Tiger Wash against the mountain front. These prospects, consisting of a nearly covered 40 ft. shaft and trenches, are marked on the Lone Mountain quadrangle by X's.

The Arizona Spar-Barite property consists of veins and stringers of light gray to white barite. Some of the barite is coarsely crystalline. Minor amounts of pale green fluorite and white quartz occur. The veins and stringers occur in a tough, fine to medium grained andesite.

The barite veins are seldom over 18 inches thick. Occasionally there are zones, commonly in volcanic breccia, that are 10 to 20 feet wide containing numerous thin stringers of barite. In general, however, the extent of the veins and stringer zones is unknown as to strike length and depth.

The owners are anxious to begin production and claim to have a "letter of irrevocable credit" from the buyers, a company known as Geo Teck(?). I understand their agreement calls for them to receive \$54.00 per ton of barite delivered. It is my understanding, however, that the "letter" will only pay for rail delivery and payment for the product is to be made only after receipt of the barite and after the barite has been tested for quality.

Arizona Spar-Barite prospect, Maricopa Co.  
January 23, 1979

Page 2

It is my opinion that although much of the barite is of high quality, with a satisfactory specific gravity, the tonnage possibilities are limited based on known exposures. Their initial contract calls for up to 2,000 tons and I doubt they can ship that much without expending a great deal of effort and money. The profit would be marginal at best. I suspect they have spent \$10,000 to \$20,000 thus far without any real production.

The owners are not well prepared to mine the barite. Their earth moving equipment is old and oversized. They have no definite plan and no firm cost figures. They are reluctant to hire a qualified consultant or mine foreman although I recommended they do so.

MG:em

cc: Tucson office

8-23-79  
1-23-80  
Received telephone call from Mr. Williams and a Mr. Walter Macaskill. They objected to the last two paragraphs. They are correct the engineer was new on the job and ~~there~~ made conclusions not justified.

The property is leased to Big Eye Bank Co. They work out of Mr. Macaskill's office in Yuma. Mr. Macaskill is the accountant.  
2450 Fourth Ave Suite 118 - tel 726-0970

By <sup>Eye</sup> ~~E~~ Brit

land property  
water  
Mac Askill  
accountant

726 - 0970

2450 Fairall Ave  
Sext 118