



CONTACT INFORMATION

Mining Records Curator
Arizona Geological Survey
1520 West Adams St.
Phoenix, AZ 85007
602-771-1601
<http://www.azgs.az.gov>
inquiries@azgs.az.gov

The following file is part of the

Arizona Department of Mines and Mineral Resources Mining Collection

ACCESS STATEMENT

These digitized collections are accessible for purposes of education and research. We have indicated what we know about copyright and rights of privacy, publicity, or trademark. Due to the nature of archival collections, we are not always able to identify this information. We are eager to hear from any rights owners, so that we may obtain accurate information. Upon request, we will remove material from public view while we address a rights issue.

CONSTRAINTS STATEMENT

The Arizona Geological Survey does not claim to control all rights for all materials in its collection. These rights include, but are not limited to: copyright, privacy rights, and cultural protection rights. The User hereby assumes all responsibility for obtaining any rights to use the material in excess of "fair use."

The Survey makes no intellectual property claims to the products created by individual authors in the manuscript collections, except when the author deeded those rights to the Survey or when those authors were employed by the State of Arizona and created intellectual products as a function of their official duties. The Survey does maintain property rights to the physical and digital representations of the works.

QUALITY STATEMENT

The Arizona Geological Survey is not responsible for the accuracy of the records, information, or opinions that may be contained in the files. The Survey collects, catalogs, and archives data on mineral properties regardless of its views of the veracity or accuracy of those data.

08/05/91

ARIZONA DEPARTMENT OF MINES AND MINERAL RESOURCES FILE DATA

PRIMARY NAME: ARIZONA PORTLAND

ALTERNATE NAMES:

INT'L SYND. MINES & SMELTERS

YAVAPAI COUNTY MILS NUMBER: 252

LOCATION: TOWNSHIP 13 N RANGE 3 W SECTION 29 QUARTER SE
LATITUDE: N 34DEG 28MIN 27SEC LONGITUDE: W 112DEG 35MIN 18SEC
TOPO MAP NAME: WILHOIT - 7.5 MIN

CURRENT STATUS: PAST PRODUCER

COMMODITY:

COPPER
SILVER
GOLD

BIBLIOGRAPHY:

USGS WILHOLT QUAD
YAVAPAI MAGAZINE PARIL 1918 P 4-8 SHARLOT
HALL MUSEUM PRESCOTT, AZ
ADMMR ARIZONA PORTLAND FILE
WEE, W.H. THE MINES HANDBOOK VOL XIII 1918
P 510 AND VOL XIV 1920 P 353
CLAIMS EXTEND INTO SEC. 28 & 32

ARIZONA PORTLAND MINES COMPANY, LTD.

YAVAPAI COUNTY
COPPER BASIN DIST.
T13N R3W Sec. 29

Yavapai County MILS Index #252

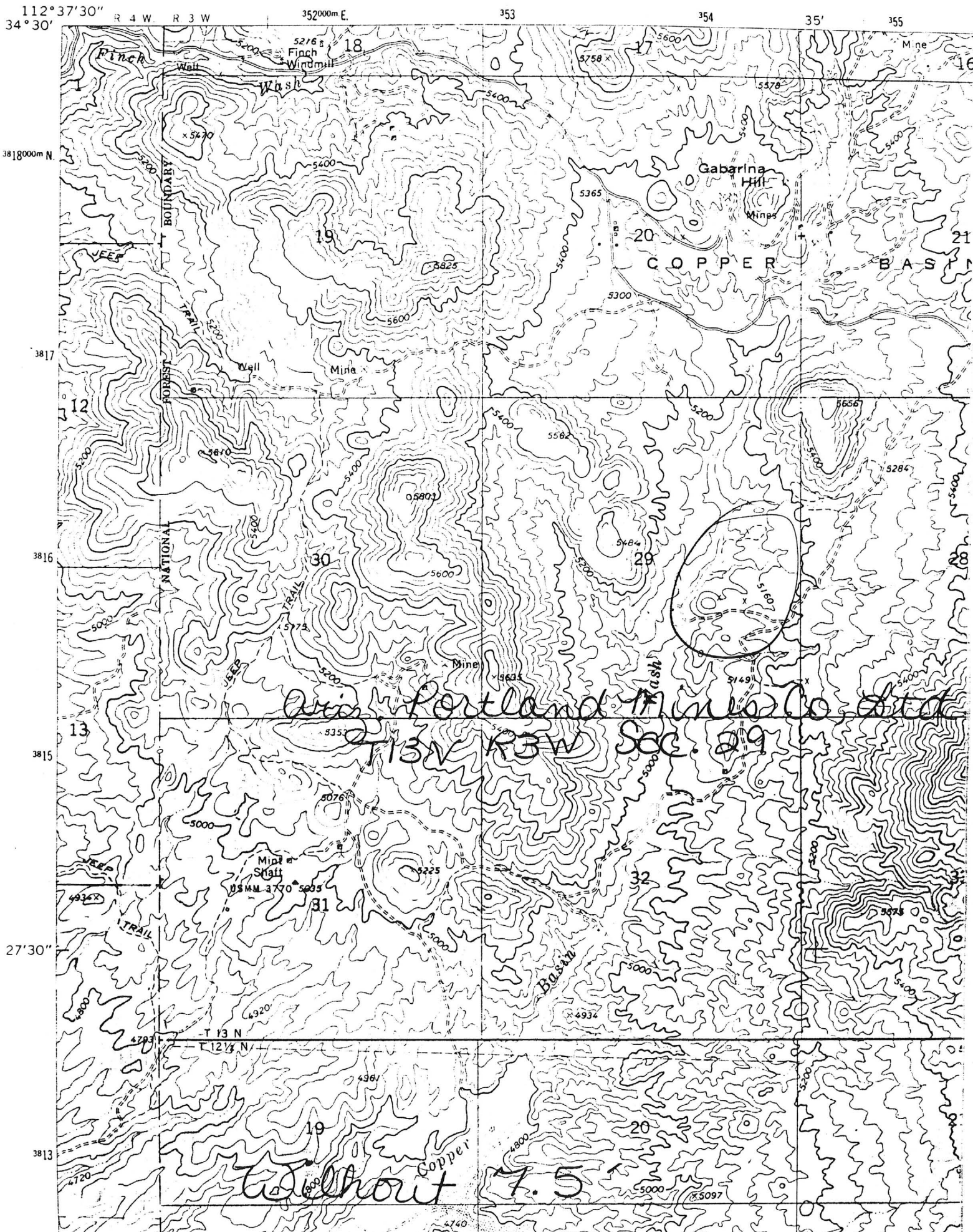
AKA: International Syndicate of Mines and Smelters Properties

The Mines Handbook Vol. XIII 1918, p. 510 and Vol. XIV 1920, p. 353

Wilhout, AZ 7.5' Topo (included in file)

33' 11" NGS

UNITED STATES
DEPARTMENT OF THE INTERIOR
GEOLOGICAL SURVEY



112° 37' 30" R 4 W R 3 W
34° 30' N

352000m E. 353 354 355
35' 35'

3818000m N

3817

3816

3815

27' 30" N

3813

BOUNDARY
NATIONAL FOREST TRAIL

COPPER BASIN

*Area Portland Mines Co. Ltd.
T 13 N R 3 W Sec. 29*

without 7.5



Arizona Portland Mines Company, Ltd.

The mining property of this company for which stock was issued to date consists of twenty-four mining claims, with strong ledges running through all of them, with such work as could be done to take care of the annual assessment performed thereon since that date. Five additional claims, with water and fuel, as well as ledges, will be incorporated into the company property this date. The five referred to are:

"Bessie," "Ella B." "Albert L.," "Anna L.," and "Warrene." The original claims are shown in title abstract.

Work and improvements on this property is given as follows by individual claims:

Dorothy and Loyal Hanna lode mining claims have a tunnel 110 feet long, 5 x 8 feet in the clear, together with mine car and 250 feet of track.

The Dorothy claim has one tunnel thirty feet long, 4 x 7 feet in the clear; one open cross cut sixteen feet long, 4 x 8 feet; 1 shaft 4 x 8--7 feet deep and 1 shaft 4 x 8--10 feet deep.

The Hillside claim has one open cut sixteen feet long, 4 x 8 ft in the clear.

The Eldorado claim has one tunnel 100 feet long, 4 x 7 feet in the clear; one shaft 4 x 8 feet, 20 feet deep; 200 feet of surface drifting, from one to four feet deep and two feet in width; one main working shaft, 4 x 8 feet in the clear, well timbered. This claim has a gossen outcrop which runs \$12. per ton in gold and 4% copper.

The Golden Fleece lode mining claim has one shaft ten feet deep, four by eight in the clear.

The Atlantic lode mining claim has one shaft thirty-two feet deep, 4 x 8 feet in the clear. It has ore eight inches wide in pay streak, lead and silver, values \$34. per ton, five foot vein; one shaft ten feet deep, 4 x 8 feet in the clear.

The Summit lode mining claim has one shaft ten feet deep, 4 x 8 feet in the clear.

The Florence V. lode mining claim has one shaft ten feet deep, 4 x 8 feet in the clear.

The Fannie T. lode mining claim has an open cut 16 feet x 4 x 8 feet in the clear.

The Anna L. lode mining claim has one open cut 16 feet x 4 x 8 feet in the clear, and one open cut 20 x 4 x 8 feet in the clear.

The Portland No. 4 claim has one open cut 16 x 4-8 feet in the clear.

The Independence claim has one shaft 10 x 4-8 feet in the clear, and one open cut 16 x 4-4 in the clear.

The Portland No. 2 claim has one shaft ten feet deep, 4 x 8 feet in the clear.

The Portland No. 3 claim has one tunnel 90 feet long by 4 x 7 feet in the clear which cut a ten foot vein with values

Just south of the
Lena Pit
T13N
R34W
S22

of copper 5.8% or \$30.70 per ton. Also one open cut 16 feet long, 4 x 8 feet in the clear.

The Favorite claim has two open cuts 16 feet long, 4 x 8 feet in the clear; 100 feet of trenching one to four feet deep; one tunnel 165 feet, 4 x 7 feet in the clear, which cut a twelve foot vein of values 2% copper and \$4.00 in silver; one open cut and tunnel 25 feet long, 4 x 8 feet into clear. (At this date have one churn drill 6 inch hole down 50 ft. on this claim, showing 6% copper or \$36.00 per ton. Drill is also set for another hole to go down 200 or 300 feet.)

The Greenwich claim has one shaft 10 feet deep, 4 x 8 feet in clear. Wagon road had to be built almost the length of this claim, at a cost of \$200.00

The Newport claim has one shaft 20 feet deep, 4 x 8 feet in clear. There has been a wagon road built the full length of this claim at a cost of \$400.00. The camp is also located here, consisting of:

- 2 dwelling houses, 12 x 24 ft., box construction,
- 1 blacksmith shop, 14 x 16 ft.,
- 2 frame and floored tents, 12 x 14,
- 1 barn 14 x 16 ft.,
- 1 cement cave and store room,

some of these having been recently built and expense not included in figures as of March 31, 1916.

Billy L. claim has an open cut 16 feet long, 4 x 8 feet in clear.

The Bessie Lode claim has one open cut 16 feet long, 4 x 8 feet in the clear, and one open cut 20 feet long, 4 x 8 feet in the clear.

The Ella B. claim has one open cut 16 feet long, 4 x 8 feet in the clear, and one open cut 20 feet long, 4 x 8 in the clear.

The Warrene claim has one shaft ten feet deep, 4 x 8 in the clear, and one open cut 16 feet long, 4 x 8 feet in the clear.

The Ella B. and Warrene claims have a dam started upon them, upon which some seven thousand dollars has been spent for excavations, reinforcing, etc., but same not completed.

The Albert L. claim has one open cut 16 feet long, 4 x 8 feet in the clear, and one open cut 20 feet long, 4 x 8 feet in the clear.

The Mayflower claim has two open cuts 16 feet long, 4 x 8 feet in the clear.

The Lucile E. claim has two open cuts 16 feet long, 4 x 8 feet in the clear.

The Laura E. claim has two open cuts 16 feet long, 4 x 8 feet in the clear.

The Jack Pot claim has one open cut 16 feet long, 4 x 8 feet in the clear.

The Portland No. 1 claim has one open cut 16 feet long, 4 x 8 feet in the clear.

The Modoc claim has one open cut 16 feet long, 4 x 8 feet in the clear, and one shaft 10 feet deep, 4 x 8 feet in the clear.

The Nellie E. claim has one open cut 16 feet long, 4 x 8 feet in the clear.

All of above referred to claims are lode claims.

One mule, one team horses, one wagon, one saddle, and miscellaneous camp equipment.

Miscellaneous mining machinery and tools, \$121.10.

The work done on this property has been with a view of showing what we had. With the trenching work, together with the shafts and tunnels that have been put in, we are now in position to test out with the churn drill and determine conclusively just what we have before any expensive move is made in the way of machinery. The good showing made in the properties adjoining in this district, and their ledges coming over onto our ground, leaves little doubt as to what we have, but at the same time we are going to take a conservative course, inasmuch as it will lessen the final expense of shaft work very materially by having the churn drill tests to aid us.

In offering stock for sale we are stating the proposed development in accordance with above.

Yours very truly,

O. B. Blydenstaff
General Manager

Prescott, Arizona, April 22, 1916.

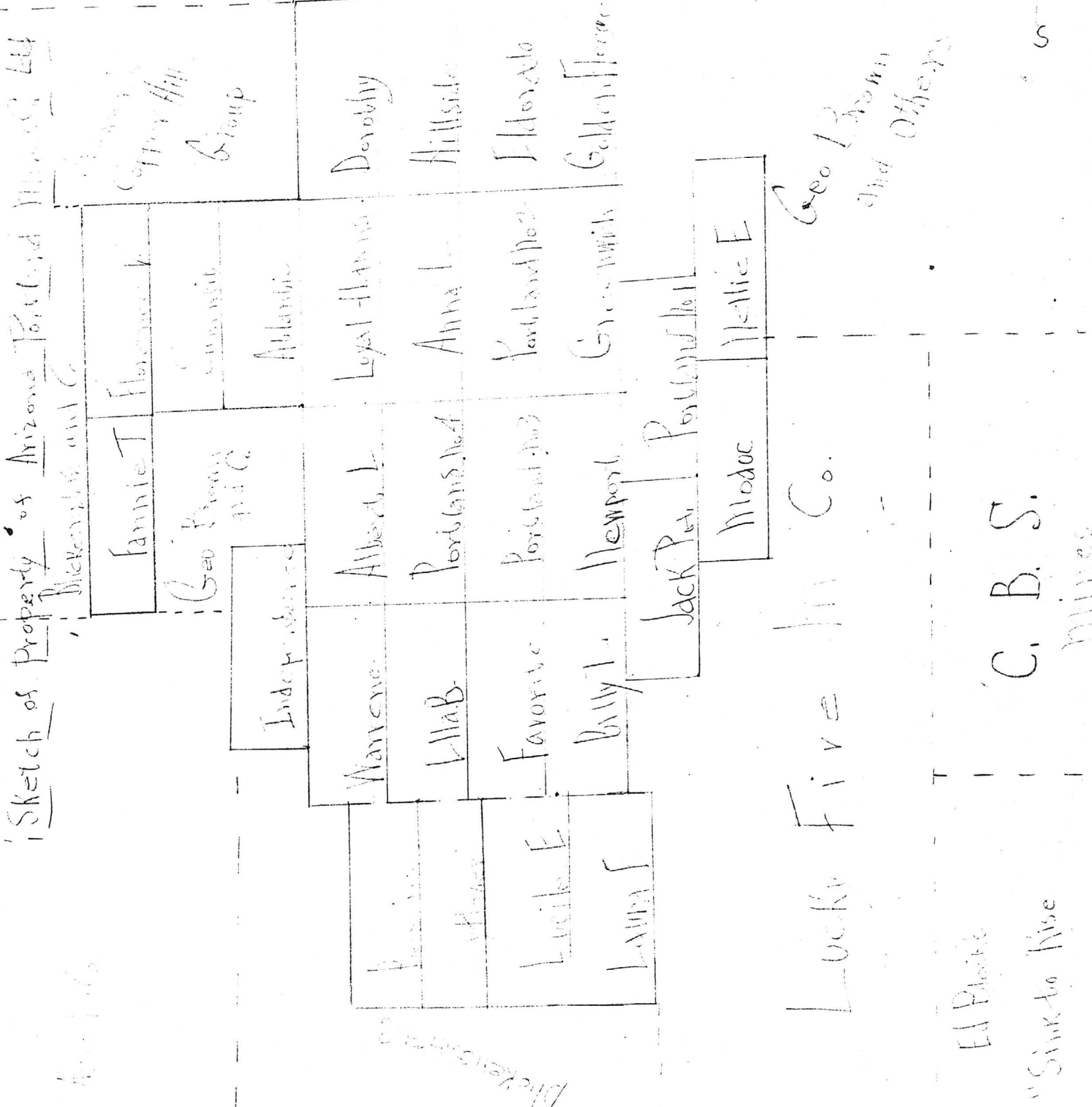
OWB T

Sketch of Property of Arizona Portland Cement Co.

4-1-1906

Commercial
Cement
Company

Loma
Societa



Ed Phelan
Sunk to Rise

C. B. S.
Mines

May 27, 1957

ARIZONA PORTLAND MINES CO. LTD.- YAVAPAI COUNTY

No information on this property. - Idle.

12 mi S.E. of Prescott

MARK GEMMILL