



CONTACT INFORMATION

Mining Records Curator
Arizona Geological Survey
1520 West Adams St.
Phoenix, AZ 85007
602-771-1601
<http://www.azgs.az.gov>
inquiries@azgs.az.gov

The following file is part of the

Arizona Department of Mines and Mineral Resources Mining Collection

ACCESS STATEMENT

These digitized collections are accessible for purposes of education and research. We have indicated what we know about copyright and rights of privacy, publicity, or trademark. Due to the nature of archival collections, we are not always able to identify this information. We are eager to hear from any rights owners, so that we may obtain accurate information. Upon request, we will remove material from public view while we address a rights issue.

CONSTRAINTS STATEMENT

The Arizona Geological Survey does not claim to control all rights for all materials in its collection. These rights include, but are not limited to: copyright, privacy rights, and cultural protection rights. The User hereby assumes all responsibility for obtaining any rights to use the material in excess of "fair use."

The Survey makes no intellectual property claims to the products created by individual authors in the manuscript collections, except when the author deeded those rights to the Survey or when those authors were employed by the State of Arizona and created intellectual products as a function of their official duties. The Survey does maintain property rights to the physical and digital representations of the works.

QUALITY STATEMENT

The Arizona Geological Survey is not responsible for the accuracy of the records, information, or opinions that may be contained in the files. The Survey collects, catalogs, and archives data on mineral properties regardless of its views of the veracity or accuracy of those data.

PRINTED: 10-15-2012

ARIZONA DEPARTMENT OF MINES AND MINERAL RESOURCES AZMILS DATA

PRIMARY NAME: ARIZONA PLACERS

ALTERNATE NAMES:

DESERT GOLD CO.
ALASKA INT'L CORP.
SILVERTON MINING & MILLING
GOLDEN SAND
E.E. LEWIS LEASE
R - GOLD PLACER

MARICOPA COUNTY MILS NUMBER: 527

LOCATION: TOWNSHIP 5 N RANGE 3 W SECTION 1 QUARTER S2
LATITUDE: N 33DEG 48MIN 02SEC LONGITUDE: W 112DEG 31MIN 31SEC
TOPO MAP NAME: WITTMANN - 7.5 MIN

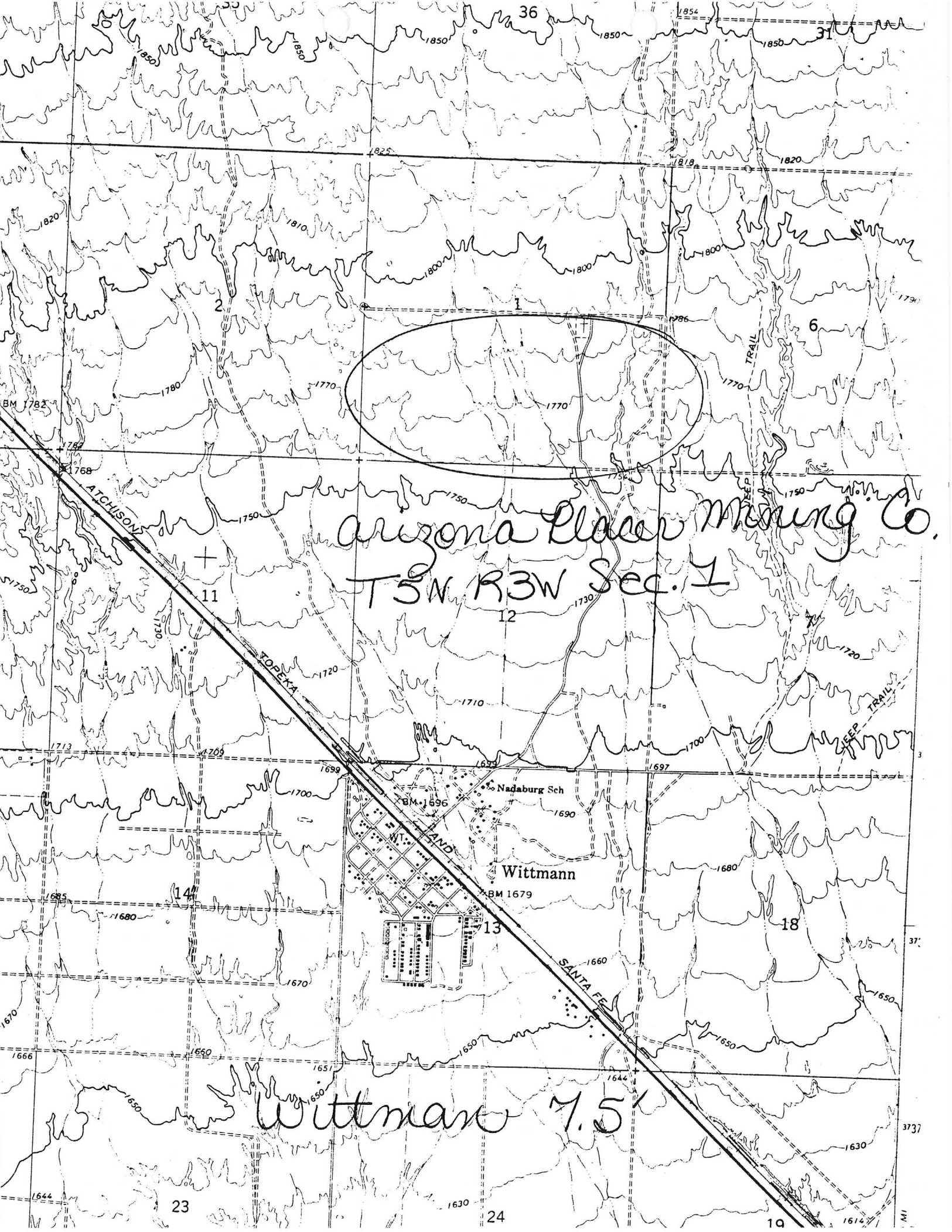
CURRENT STATUS: EXP PROSPECT

COMMODITY:

GOLD PLACER

BIBLIOGRAPHY:

USGS WITTMANN QUAD
ADMMR ARIZONA PLACERS FILE
THIS PLACER COVERS APPROX 8,000 ACRES,
E. OF BEARDSLEY TO NORTHEAST OF MORRISTOWN
CLAIMS EXTEND INTO SURROUNDING SECTIONS



Arizona Placer Mining Co.
T5N R3W Sec. 1

Wittman 7.5'

Map details including:
- Place names: ATCHISON, TOPEKA, WITTMAN, NADABURG SCH, WITLAND, SANTA FE
- Elevation contours: 1850, 1820, 1800, 1780, 1770, 1750, 1730, 1710, 1700, 1690, 1680, 1660, 1650, 1630
- Section numbers: 6, 11, 12, 13, 14, 18, 23, 24
- Benchmarks: BM 1696, BM 1679
- Features: A large oval highlighting a specific area in the upper-middle section; a diagonal line crossing the map; a grid of section lines.

MEMO

October 10, 1961

GOLDEN SANDS (gold placer)

Travis P. Lane

Visited the Golden Sands project. The plant was in operation following a several months shutdown. Robert Hardy formerly metallurgist at the plant is in California supervising manufacture of dry machines, particularly a "rougher" machine of his design. A machine of this type has been installed at Golden Sands. The present plant run is a testing of the machine as well as of some other modifications in the circuit. 7 men are employed with F.P. ("Rusty") Ronton in charge. V. E. ("Butch") Surface is metallurgist.

Dec. 21, 1961 - Visited the Golden Sands placer project. It was idle with only a watchman and another man on the premises. Plan to resume plant testing after the first of the year. Interviews at Congress Jct., and at Wikieup.

TRAVIS P. LANE - Weekly Report - 12-22-61

This property active 2-1962 - 12 men working.

Feb. 22, 1962 - Visited Golden Sands placer plant. Idle. A recently appointed caretaker, Vernon Bettein, representing David Weisz, auctioneer of Los Angeles was present. He said he believed these people had "taken over", and they had sent him in to clean up and watch the equipment.

TRAVIS P. LANE - Weekly Report - Feb. 24, 1962

March 13, 1962 - Visited the Golden Sands Project. Joe Savage, watchman, advised that all equipment would be sold at an auction to be held on the property on March 23rd.

TRAVIS P. LANE - Weekly Report - 3-17-62

GOLDEN SANDS, MINE

MARICOPA COUNTY

Visited the Golden Sands Project of McDonald Construction Co. The plant was starting a 70 yard test run. A. J. Henry, Supt., advised that the recently installed butane fired infra-red heaters for drying the material proved inadequate and additional units will be installed. G. S. Borden of Borden and Dougherty, lessors of the ground (720 acres) to Golden Sands was present.

TRAVIS P. LANE - Weekly Report - 3-18-61

April 19, - Visited the Golden Sands project of McDonald Construction Co. The plant was operating with 10 men employed. Robert N. Hardy, General Delivery, Morristown, is the newly appointed metallurgist. He is working principally on the possibilities of by-product production of tungsten and rare metals and rare earths.

TRAVIS P. LANE - Weekly Report - 4-22-61

June 23, 1961 - Visited the Golden Sands project. Ken Hebner was cleaning up from a test run, and the crew was running additional material. No reliable information available. Hebner advised that he and Doug Clark and Walter Martin had tested an area of 9 unpatented placer claims centered about the junction of Placerita Creek and French Gulch. They plan putting in a sizeable washing plant (wet).

TRAVIS P. LANE - Weekly Report - 6-24-61

GOLDEN SANDS

MARICOPA COUNTY
SAN DOMINGO WASH.

The Golden Sands Project is employing a crew of 10 to 12 men at its operations about six miles east of Morrystown, Arizona. The company has been actively engaged in exploration and plant construction at this placer property for the past year. Project personnel include Walter A. Martin, of Scottsdale, Arizona, and A. J. Henry, Superintendent, Wickenburg, Arizona.

Taken from MINING WORLD, January 1961, p 47.

MEMO

November 16, 1960

• Golden Sands Project

Travis P. Lane

Visited the Golden Sands Project and talked with A.J. Henry, Supt. The plant was temporarily idle making screen changes. Mr. Henry gave me some information re the Desert Gold Mining Co., lessor to McDonald Construction Co., of the 4700 acres of the Golden Sands project. See the Desert Gold Mining Co. for other information pertaining to it.

Area 720 acres
1-2-4

MEMO

October 11, 1960

GOLDEN SANDS PROJECT

Travis P. Lane

Visited the Golden Sands project of McDonald Construction Co. The washing plant was in operation and I was told that it had been operating continuously on a one shift per day basis for the past 3 weeks. Neither Martin nor A.J. Henry were present. The mill foreman is now Paul ("Captain") Kirk, Box 123, Morristown. Ken Hebner has recently joined the organization. He handles the clean-up section of the plant and at the time of visit was cleaning the plant concentrates. He separates both the gold and the black sand and treats the latter in an amalgam barrel. The 3 plant machines are 30" x 60" Clint dry washing tables manufactured in Placerville, Calif. The cleaner washer is the same machine but smaller (12" x 24"). The plant treatment rate is 27 tons per hour with minus 1/16" size going to the tables and +1/16" going to the nugget trap. The operators intend soon to use a portable "pre-screening" plant and bring in to the plant only 1/4" size, thus eliminating the crusher and pulverizer operation in the plant. No information re production, costs, grade of material etc., was available. 10 men are employed. Note: The Golden Sands project is 6 miles easterly from Morristown; proceed 3.3 miles on the Castle Hot Springs road, then turn left and follow signs.

MEMO

April 26, 1962

Re: Some recent Gold Placer "Confidential"
activity in the SAN
DOMINGO - PIKES PEAK REGION TSNRIW

Travis P. Lane

The following somewhat sketchy information was gleaned from a telephone conversation today with Dale Moran of Desert Gold Mining Company.

Desert Gold Mining Co. (Herb Miller, Executive Vice President) recently patented a group of placer claims comprising some 8200 acres in the San Domingo Wash region. This included 720 acres of placer ground leased to McDonald Construction Co. and operated by them as the Golden Sands Project.

Golden Sands built a rather elaborate crushing, screening, and drying plant with devices for dry recovery of gold. The plant operated intermittently thruout most of the past 4 years until just recently when the equipment was all sold at auction. During the course of the work it is claimed that 29,000,000 yards of material with a gold content of 44¢ per yard were proven. Lack of success of the venture is blamed upon defects of the gold saving devices, inept manipulation and high operating cost (75¢ per yd.). McDonald Construction Company is maintaining its leasehold and is said to be considering resumption of work with other types of recovery equipment made up into small portable plants. It is said that McDonald Construction Co. has spent some \$600,000 to date on the project.

Alaska International Corp., James V. Reynolds, Pres. has made application for patenting a large number of placer claims (totaling about 4800 acres) in the Pikes Peak area centered about T. 5 N., R. 1 W. The ground is presently being examined by engineers of the Bureau of Land Management. Moran states that test work has indicated 31,000,000 yards having a gold content of 41¢ per yd.

Arizona Placer Mining Co. and Golden Hills Mining Co., in each of which Desert Gold Mining Co. appears to have a substantial interest, together own sizeable blocks of placer claims in the Pikes Peak area. An operating lease has been granted to E. E. Lewis of Grand Junction, Colorado, on 6000 acres of this ground. It is claimed that recent testing of this ground has proven 93,000,000 yards of material containing 64¢ per yard. Application will be made for patents on these claims. The relationship between these various projects is not clear. Moran stated that it is the intention soon to incorporate all these placer holdings into one corporation.

Hale Tognoni, Attorney, handles the legal details for most of the above activities.

References: New Projects (file) corresp. files
"San Domingo - Pikes Peak Region" Au Placer-
activity

C
O
P
Y

Monday: Visited the Golden Sands project of the McDonald Construction Co. The project located in San Domingo wash some 7 miles northeasterly from Morristown (note correction of location) was described in my weekly report dated Nov. 16. The plant started up shortly after that date, but has operated at only brief intervals. At the time of this visit the treatment section of the plant was being revamped. Mr. A.J. Henry (Box 1174, Wickenburg) the superintendent, related how a succession of "bugs" has prevented continuous economical operation. The recovery method is by dry concentration. Most of the gold is said to occur in cemented gravels ("caliche") hence the crushing and pulverizing equipment. According to Mr. Henry the first treatment unit, an original design which did not employ air as a separating medium was a failure. He said a second unit, manufactured by the Dry Milling Corp. of Los Angeles, made a good recovery of coarse gold, but lost the very much larger volume of fine gold. In fact this fine gold is so fine that it is referred to by the operators as "mythical" gold, because it cannot be determined by assaying. The present revamping job will install 4 patented "Rock and Roll" machines employing pulsing air pressure and an electrostatic tray. The machines are made in Placerville, Calif., and are counted upon to certainly recover the "mythical" gold. Another of the revamp jobs is the installation of a dryer and an elevator to lift the pulverizer product to the feed end of the dryer. Mr. Henry estimates that about 400 yds. of gravel has been processed to date, but because of the shortcomings of the plant, gold recovery has been practically nil. The operators estimate the proven gold area as $3\frac{1}{2}$ x 6 miles with gravel thickness of 15' to 20'. The grade of feed to date is estimated at \$6 to \$7 but the whole reserve at "only" \$3.

Visited E. Will at his camp, formerly Cole's camp, some 12 miles easterly from Morristown on the road to Castle Hot Springs. Learned from him that there was no mining activity in the region (except the Golden Sands placer project). Kennecott apparently has suspended all work on its large group after drilling 2 (?) exploratory holes.

TRAVIS P. LANE - Weekly Report - Jan. 9, 1960

Visited the Golden Sands Project of MacDonald Construction Co. The company has not yet gotten into steady production and is still testing dry washing machines and methods. 11 men are employed.

TRAVIS P. LANE - Weekly Report - 6-18-60

GOLDEN SANDS MINE

MARICOPA COUNTY ?
DOMINGO WASH

Visited the Golden Sands project of the MacDonald Construction Co. This is a gold placer operation in Domingo Wash approximately 6 miles easterly from Morristown. None of the principals was present at the time of this visit. However, I talked with John Watts, Foreman, who is directing the construction of an elaborate crushing, screening and washing plant. He informed me that the firm is a large construction contractor with main offices in St. Louis, Mo., and Albuquerque, N.M. Direction of the placer project is by Walter A. Martin, P.O. Box 1611, Scottsdale. A.J. Henry is the job superintendent with residence in Wickenburg. Kelsey Boltz is the consulting mining engineer.

A large acreage in Domingo Wash has been acquired and it is proposed to work the surface soil and gravels (some of which is caliche cemented) to bedrock, said to be 1' to 20' deep and possibly more.

The plant consists of a Cedar Rapids 24" x 36" jaw crusher and a Cedar Rapids pulverizer (hammer mill) followed by a shaking table of the operators' design, together with accessory hoppers, conveyor belts and feeders. The expected plant capacity is 60 TPH and the start-up date is anticipated before the end of November. 8 men are employed.

TRAVIS P. LANE, November 14, 1959 - WR

GOLDEN SANDS PLACER

MARICOPA COUNTY

"San Domingo - Pike's Peak Region" Au Placer Activity
New Projects (file) Corres. files

ALASKA INTERNATIONAL CORP. ^(file) 5/18/63
ALBUQUERQUE, N. Mex.

YAVAPAI COUNTY

See: R-GOLD PLACER CLAIMS (file) Gold Maricopa
TERRILL PLACER (file) Yavapai
See: Mining World September 1963, P55

R-GOLD AND A-GOLD

Maricopa County
Pikes Peak Dist.

Interview with Hale Tognoni 4-3-63

Hale stated that American-Metals-Climax geologists have been on the ground and if their report is favorable this company would take a 5 year prospecting option to test the ground on a much smaller grid than has been drilled to date. Lewis Co.^{he} disclosed, in their testing,^{got} 3 to 4 percent of magnetite, in addition to \$0.70 in gold. American Metals-Climax would also investigate the feasibility of dry machines for recovery purposes. They would also test for sufficient water to convert to a wet method if the dry methods do not work properly. Lewis will, meanwhile, continue test drilling for at least the next 6 months.

Lewis Co. leased 1,500,000 yards of the better placer to Walter Martin, of Scottsdale, (946-5821) who has a dry machine that is a revision of the Clint Dry Machine. Martin plans to begin testing the R-Gold gravel soon. The new machine is called the "Hardy" machine and is, from the description a type of activated jig. Martin has a 6-month lease.

MEMO LEWIS A. SMITH 4-3-63

R-GOLD PLACER CLAIMS

MARICOPA COUNTY

Hale Tognoni, agent for Alaska International Co., reported that E. E. Lewis, Inc., lessees on R-Gold, will resume testing about Feb. 1, but on a different part of the claims. LAS WR 1-11-63

Active Mine List Oct. 1962 - 4 men working

ALASKA INTERNATIONAL CORPORATION

Applicants for patents, covering nearly 5,000 acres of gold placer claims in Maricopa County, Arizona, have been filed by three mining companies with the U. S. Bureau of Land Management. The mining concerns are the ALASKA INTERNATIONAL CORPORATION, the SILVERTON MINING AND MILLING COMPANY, INC., and ARIZONA PLACER MINING COMPANY, INC. Their applications cover 33 claims in an area roughly described as lying between Lake Pleasant and the town of Wittman. These companies have already received patents to about 8,000 acres in the same vicinity.

Taken from MINING WORLD, November, 1962

ARIZONA PLACERS, INC.

Desert Gold Company and Arizona Placers, Inc. of Phoenix have filed for patents on 7,490 acres of gold-bearing land 50 miles northwest of Phoenix in the San Domingo Wash area along the Phoenix-Wickenburg highway. The existence of gold in this area has been known for many years, but the low grade and high cost of recovery has always made operations unprofitable.

Taken from MINING WORLD, August, 1962

Applicants for patents, covering nearly 5,000 acres of gold placer claims in Maricopa County, Arizona, have been filed by three mining companies with the U.S. Bureau of Land Management. The mining concerns are the ALASKA INTERNATIONAL CORPORATION, the SILVERTON MINING AND MILLING COMPANY, INC., and ARIZONA PLACER MINING COMPANY, INC. Their applications cover 33 claims in an area roughly described as lying between Lake Pleasant and the town of Wittman. These companies have already received patents to about 8,000 acres in the same vicinity.

Taken from MINING WORLD, November, 1962

MEMO

R-Gold Placer Claims

July 5, 1962

Pikes Peak Mining District, Maricopa Co.

Alaska Gold has completed its preliminary testing on the 40 acre grid and is now contemplating closing the grid to 20 or 10 acres. The previous grid showed 70-75 cents average over more than 4000 acres. Tognini stated that the Bureau of Land Management results were some higher than theirs. At least 3 channel patterns were found. Future sampling will be by cess pool digger, but a sample plant will have to be devised to handle bulk samples, since these diggers yield 1 yard of gravel per 3 feet of depth.

They leased the Arizona Gold Placers part of their holdings to E. E. Lewis Co., of Denver who have sunk 5 50-foot holes to date. They also discovered that the gravels had zones in which the grade was higher, or lower, than the zones above, or below. They plan now to resume testing on a closer spacing later in July.

These various explorations indicate that a placer band exists from E of Beardsley to northeast of Morrystown. Tognoni thinks some gold will be found all through this band but that there will probably be zone, both lateral and downward, or variable grades, depending to a large degree upon the stream patterns, both old and new.

Interview with Hale Tognoni, 6-29-62

LEWIS A. SMITH - July 5, 1962

New Projects

MEMO

April 26, 1962

Re: Some recent Gold Placer activity in the SAN DOMINGO - PIKES PEAK REGION "Confidential"

Travis P. Lane

The following somewhat sketchy information was gleaned from a telephone conversation today with Dale Moran of Desert Gold Mining Company.

Desert Gold Mining Co. (Herb Miller, Executive Vice President) recently patented a group of placer claims comprising some 8200 acres in the San Domingo Wash region. This included 720 acres of placer ground leased to McDonald Construction Co. and operated by them as the Golden Sands Project.

Golden Sands built a rather elaborate crushing, screening, and drying plant with devices for dry recovery of gold. The plant operated intermittently thruout most of the past 4 years until just recently when the equipment was all sold at auction. During the course of the work it is claimed that 29,000,000 yards of material with a gold content of 41¢ per yard were proven. Lack of success of the venture is blamed upon defects of the gold saving devices, inept manipulation and high operating cost (75¢ per yd.). McDonald Construction Company is maintaining its leasehold and is said to be considering resumption of work with other types of recovery equipment made up into small portable plants. It is said that McDonald Construction Co. has spent some \$600,000 to date on the project.

Alaska International Corp.*, James V. Reynolds, Pres. has made application for patenting a large number of placer claims (totaling about 4800 acres) in the Pikes Peak area centered about T. 5 N., R. 1 W. The ground is presently being examined by engineers of the Bureau of Land Management. Moran states that test work has indicated 31,000,000 yards having a gold content of 41¢ per yd.

Arizona Placer Mining Co. and ^{Golden} Garden Hills Mining Co., in each of which Desert Gold Mining Co. appears to have a substantial interest, together own sizeable blocks of placer claims in the Pikes Peak area. An operating lease has been granted to E.E. Lewis of Grand Junction, Colorado, on 6000 acres of this ground. It is claimed that recent testing of this ground has proven 93,000,000 yards of material containing 64¢ per yard. Application will be made for patents on these claims. The relationship between these various projects is not clear. Moran stated that it is the intention soon to incorporate all these placer holdings into one corporation.

Hale Tognoni, Attorney, handles the legal details for most of the above activities.

* June 19, 1962

According to a telephone conversation today with Walter A. Martin, Alaska International has leased its holdings to MBM Mineral Resources, Inc. Joe E. Bettger, President, R. E. McDonald, Chairman of the Board; Walter A. Martin, Vice Pres. Donald McCarthy has reported 2,600,000 yards at \$1.60/yd.

DEPARTMENT OF MINERAL RESOURCES

STATE OF ARIZONA

FIELD ENGINEERS REPORT

Mine R - Gold Placer Claims Date March 2, 1962
District Pikes Peak District, Maricopa Co. Engineer Lewis A. Smith
Subject: Interviews with D.P. McCarthy, Consulting Geologist, in charge of sampling, Don Reed of the Bureau of Land Management, and Hale Tognoni, Attorney for the company.

Property: 30 associations claims of 160 acres each and one independent 400 acre area.

Location: This property and other proposed additions lies in Sections 6-36, T. 5 N., R. 1 W. The claims are reached by 5 miles of road from close to where the canal crosses Highway 60-70 to the northeast.

Owners: Alaska International Corp., (a Nevada Corp.) represented by Hale C. Tognoni, Atty., 411 N. Central Ave., Phoenix.

John Reynolds of Albuquerque, New Mexico is President.

The testing work is being conducted by Zanzibar Investment Co., of Phoenix, also represented by Hale Tognoni.

Minerals: Gold and some magnetite.

Work: The area is being sampled by test pits 12-14 feet deep, one hole to every 40 acres. It is planned to sample every 20 acres in one of the better areas. The owners have applied for a \$50,000 O.M.E. loan to finance a deeper drilling program calculated to reach bedrock. Since the sampling has covered only the upper portion of the placer, or down to a caliche layer, McCarthy is certain that an older gravel lies between the caliche and bedrock. The sampling so far completed, is reported to run 80 cents up to \$1.30 in gold per yard. One limited area averaged about \$1.80 and this area is scheduled for closer spaced holes. The average depth of the upper gravels is 12-14 feet. The holes yield about 10 yards of test material and this is transported by trucks to a central screening plant. Here the material of about 8-10 mesh or less is separated from the coarser material. The fines are then run over a revised Clint dry separator and the gold extracted. A 200 pound sample is also tested by the Bureau of Land Management's Don Reed. This sample is panned.

Mr. McCarthy stated that he was of the opinion that the gravels below the caliche could be better than those above it and that the older channels would be 60 to 70 degrees divergent in course as compared to the courses of the present streams. In several places in the state 3 level placers are known such as in the Quartzsite area. A cess-pool rig may be employed to test these lower gravels. Some difficulty may be had with the lower placer testing since the gravel courses and locations are as yet not definitely known. Test holes could conceivably miss or hit them, or both and the results would then be apt to vary greatly. Closer test hole spacing will probably be required as compared to that required in the upper gravels which are reported to be fairly consistent in values throughout their depth. Also, the older channels may be absent in places due to erosion and other factors and to localization of values in the channels.

A water well, reported to yield 300 gallons of water per minute, lies no more than 2 miles from the property. The company has a dredge which will handle 75-80 yards per hour and also the larger dry separator that McDonald set up near Morristown. Both may later be tried here.