



CONTACT INFORMATION

Mining Records Curator
Arizona Geological Survey
1520 West Adams St.
Phoenix, AZ 85007
602-771-1601
<http://www.azgs.az.gov>
inquiries@azgs.az.gov

The following file is part of the

Arizona Department of Mines and Mineral Resources Mining Collection

ACCESS STATEMENT

These digitized collections are accessible for purposes of education and research. We have indicated what we know about copyright and rights of privacy, publicity, or trademark. Due to the nature of archival collections, we are not always able to identify this information. We are eager to hear from any rights owners, so that we may obtain accurate information. Upon request, we will remove material from public view while we address a rights issue.

CONSTRAINTS STATEMENT

The Arizona Geological Survey does not claim to control all rights for all materials in its collection. These rights include, but are not limited to: copyright, privacy rights, and cultural protection rights. The User hereby assumes all responsibility for obtaining any rights to use the material in excess of "fair use."

The Survey makes no intellectual property claims to the products created by individual authors in the manuscript collections, except when the author deeded those rights to the Survey or when those authors were employed by the State of Arizona and created intellectual products as a function of their official duties. The Survey does maintain property rights to the physical and digital representations of the works.

QUALITY STATEMENT

The Arizona Geological Survey is not responsible for the accuracy of the records, information, or opinions that may be contained in the files. The Survey collects, catalogs, and archives data on mineral properties regardless of its views of the veracity or accuracy of those data.

05/19/88

ARIZONA DEPARTMENT OF MINES AND MINERAL RESOURCES FILE DATA

PRIMARY NAME: ARIZONA MIST QUARRY

ALTERNATE NAMES:

MOHAVE COUNTY MILS NUMBER: 52A

LOCATION: TOWNSHIP 20 N RANGE 20 W SECTION 20 QUARTER SE
LATITUDE: N 35DEG 06MIN 06SEC LONGITUDE: W 108DEG 25MIN 33SEC
TOPO MAP NAME: OATMAN - 7.5 MIN

CURRENT STATUS: PAST PRODUCER

COMMODITY:
STONE RHYOLITE

BIBLIOGRAPHY:
ADMMR ARIZONA MIST QUARRY FILE

R. 20 W.

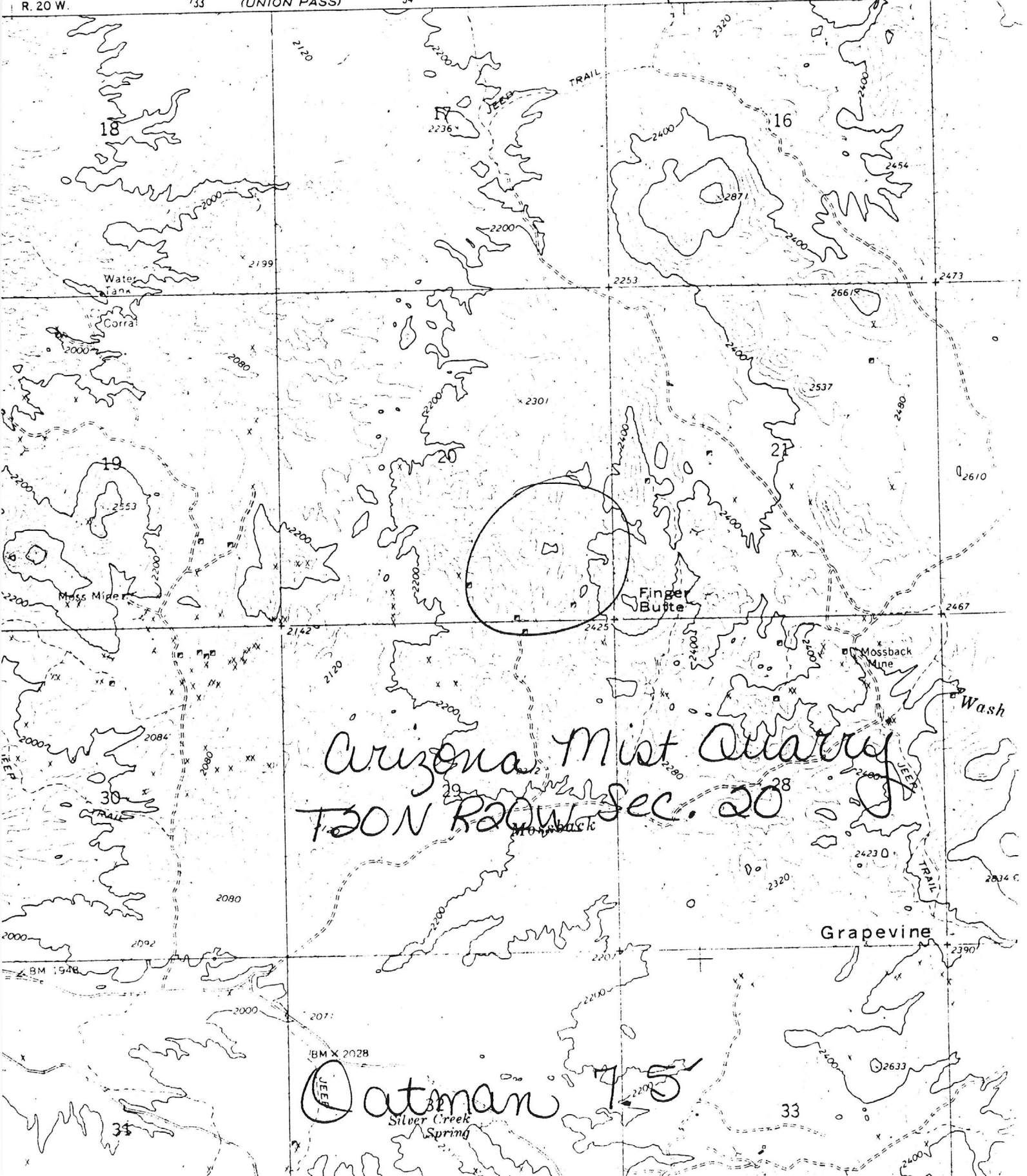
733

3154 III NW
(UNION PASS)

734

7 MI TO ARIZ. 68 25'

736



Arizona Mist Quarry
T. 30 N. R. 20 W. Sec. 20

Datman 75
Silver Creek Spring

DEPARTMENT OF MINERAL RESOURCES

STATE OF ARIZONA

FIELD ENGINEERS REPORT

Mine Arizona Mist Quarry Date Feb. 24, 1959
District Union Pass District - Mohave County Engineer Travis P. Lane
Subject: Visit to Quarry

Location: Quarry near Finger Butte, Union Pass District, Mohave County.
Sec. 20, T20N, R20W

Owner: T & K Stone Co., 10910 Pine Street, Los Alamitos, California
S. S. Kuykendall, Pres.

Visited colored stone quarry (rhyolite) of T & K Stone Co., S. S. Kuykendall, Pres.
The quarry is near Finger Butte, Union Pass District. 3 men working. Some small
shipments have been made to the west coast of Southern California, both by rail
and by truck.

RIK

Visited Arizona Mist Quarry of T & K Stone Co. (S.S. Kuykendall). 3 men were working with a Mr. Beard in charge. Operations were suspended shortly after the visit of Feb. 19 and were resumed 2 weeks ago. Shipments are being made to Los Angeles. Some 50 to 60 tons have gone out since resumption of work.
TPL WR 5-23-59

Visited the Arizona Mist Quarry (vari-colored rhyolite). Two men were loading rock for trucking to Los Angeles. The work here is intermittent depending upon irregular calls for this type of building material. TPL WR 11-23-59

Visited the Arizona Mist Quarry of T & K Stone Company in the Union Pass area. This is an intermittent small-scale shipper of vari-colored rhyolite. No one was present. However, camp conditions indicated the work was only temporarily suspended probably (as in the past) because the crew was trucking a load to the company yards in southern California. Some 70 to 80 tons of material stacked in separate clean uniformly sized piles of about 2 tons each are ready for shipment. A building has been put up recently. This houses the dozer-loader and other equipment. TPL WR 5-21-60

Visited the Arizona Mist Quarries. Work is continuing intermittently trucking colored rhyolite to the west coast, and also supplying stone locally at retail.
TPL WR 6-24-61

Active Oct. 1961

Active Feb. 1962

Active Mine List Oct. 1963 - 3 men