



CONTACT INFORMATION

Mining Records Curator
Arizona Geological Survey
1520 West Adams St.
Phoenix, AZ 85007
602-771-1601
<http://www.azgs.az.gov>
inquiries@azgs.az.gov

The following file is part of the

Arizona Department of Mines and Mineral Resources Mining Collection

ACCESS STATEMENT

These digitized collections are accessible for purposes of education and research. We have indicated what we know about copyright and rights of privacy, publicity, or trademark. Due to the nature of archival collections, we are not always able to identify this information. We are eager to hear from any rights owners, so that we may obtain accurate information. Upon request, we will remove material from public view while we address a rights issue.

CONSTRAINTS STATEMENT

The Arizona Geological Survey does not claim to control all rights for all materials in its collection. These rights include, but are not limited to: copyright, privacy rights, and cultural protection rights. The User hereby assumes all responsibility for obtaining any rights to use the material in excess of "fair use."

The Survey makes no intellectual property claims to the products created by individual authors in the manuscript collections, except when the author deeded those rights to the Survey or when those authors were employed by the State of Arizona and created intellectual products as a function of their official duties. The Survey does maintain property rights to the physical and digital representations of the works.

QUALITY STATEMENT

The Arizona Geological Survey is not responsible for the accuracy of the records, information, or opinions that may be contained in the files. The Survey collects, catalogs, and archives data on mineral properties regardless of its views of the veracity or accuracy of those data.

02/13/86

ARIZONA DEPARTMENT OF MINES AND MINERAL RESOURCES FILE DATA

PRIMARY NAME: ARIZONA MINE

ALTERNATE NAMES:

PIMA COUNTY MILS NUMBER: 576

LOCATION: TOWNSHIP 20 S RANGE 10 E SECTION 25 QTR. W2
LATITUDE:N 31DEG 38MIN 51SEC LONGITUDE:W 111DEG 16MIN 24SEC
TOPO MAP NAME: ARIVACA - 15 MIN

CURRENT STATUS: PAST PRODUCER

COMMODITY:

SILVER-PRIMARY
COPPER-BYPRODUCT
MERCURY-RECOVERABLE

BIBLIOGRAPHY:

ADMMR FILE DATA 1633

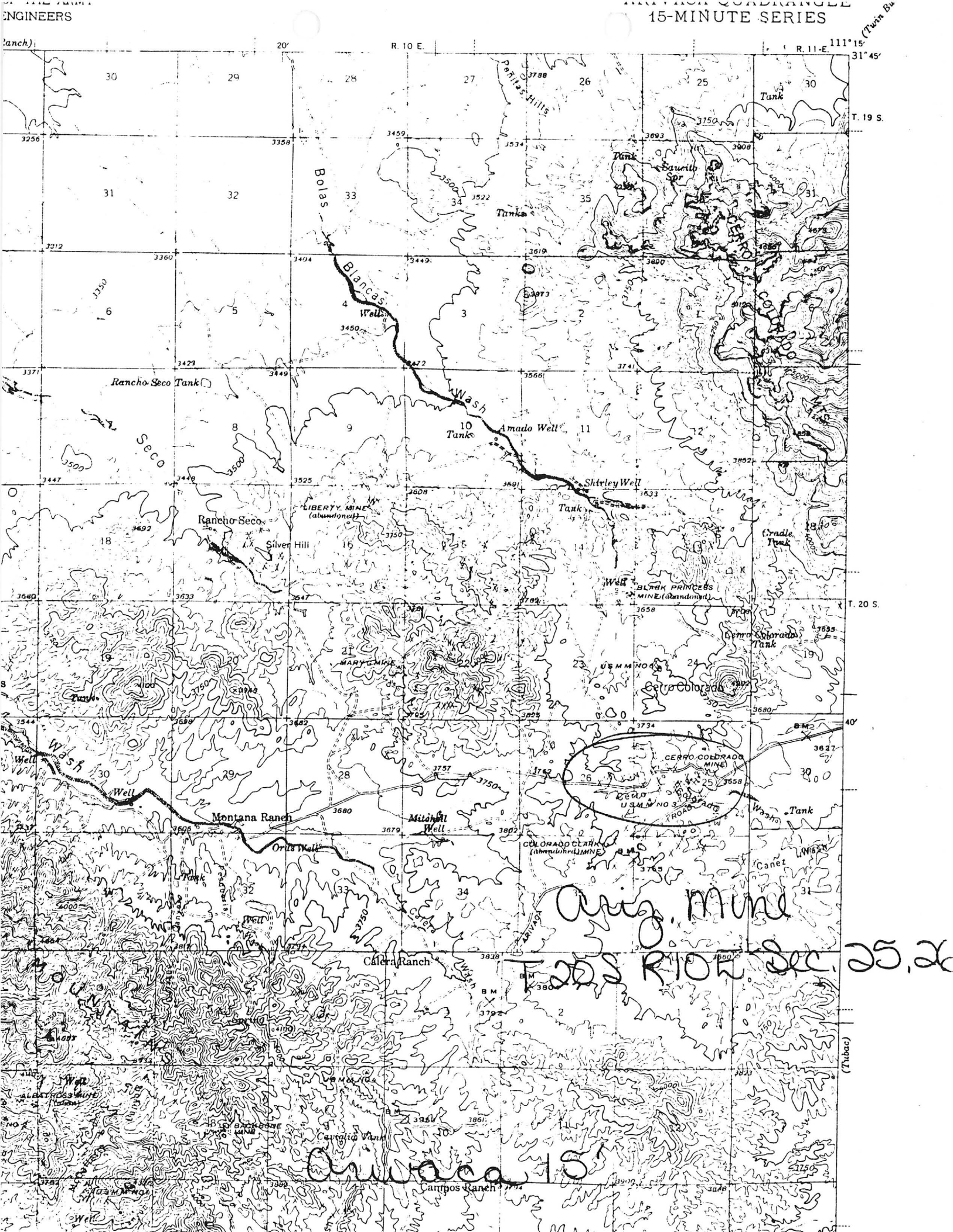
ARIZONA MINE

PIMA COUNTY
CERRO COLORADO DIST.
T20S, R10E, sec 25 or 26

Metal Mining & Processing Feb. 1964 p. 15

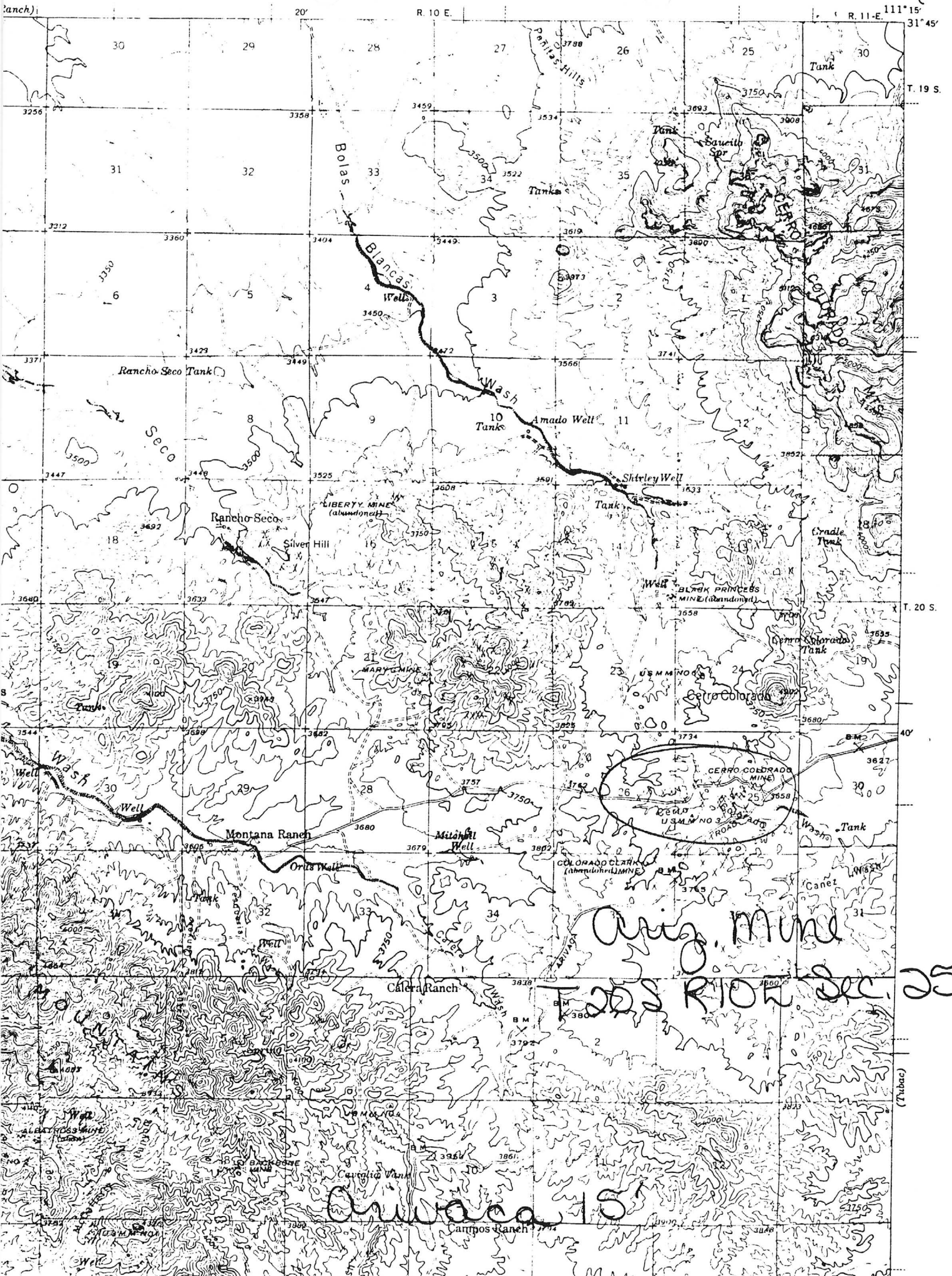
Pima County MILS Index #576

Arivaca, AZ 15' Topo (included in file)



ENGINEERS

15-MINUTE SERIES



Ariz. Mine

T. 20 S. R. 10 E. Sec. 25, 26

Ariz. 15

ARIZONA MINE

PIMA COUNTY

MG WR 2/19/88: Mr. Albert Canez, 120 E. Fiarground, Tucson, AZ 85714; phone 889-8053 reports he and his father (Manuel) periodically ship concentrates from the Arizona Mine, Pima County. Apparently they mine on the 40-ft level off of a vertical (?) shaft. The ore consists of tetrahedrite with high silver values and minor gold. At least two shipments, approximately 500 pounds (?) each, were made in 1987 to Allied Precious Metals Recycling Co. in Tucson. Mr. Canez hopes to make another shipment soon. Although this property has been controlled by the Canez family for at least three generations, the family has very few records. Canez did say he would let us copy whatever he has.

STATE OF ARIZONA
FIELD ENGINEERS REPORT

Ore Values Mr. Canez reports an assay which ran 330 oz. silver and 20 % copper. However, as stated in the Jan. 8 report under "Geology and Mineralization", the veins are narrow and the pay streaks within the veins are only a few inches wide.

DEPARTMENT OF MINERAL RESOURCES

STATE OF ARIZONA
FIELD ENGINEERS REPORT

Mine Arizona Mine

Date Jan. 8, 1963

District Cerro Colorado District, Pima Co.

Engineer Axel L. Johnson

Subject: Field Engineers Report. Information from George Canez and personal visit.

Location Sec. 25 or 26 -- T 20 S - R 10 E. Take Kinsley-Arivaca road, and drive to intersection with the Las Guijas road (about 9 miles NE of Arivaca). Drive 0.2 miles SW and turn left (SE); and then drive 0.45 miles and turn right (SW) driving for another 0.35 miles stopping at the shack where the mine operators live. From there, it is a few hundred yards walk to the mine.

Number of Claims 2 unpatented claims ---- "Arizona" and "Porto Seco"

Owners Ygnacio Canez, Jr.; Juan Canez; and Joe Canez (three brothers)

Operators same as above---Ygnacio Canez, Jr. and son, George, working in the mine.

Principal Minerals Silver, with some copper.

Present Mining Activity Sinking shaft (extension of old shaft) --- 3 men working.

Geology & Mineralization A number of quartz veins, mostly quite narrow, but some as much as 2 ft. in width, are found in andesite. Some of these veins are mineralized, containing tetradedrite, chalcocite, malachite, azurite, etc. with high silver and mercury values. A 2 1/2 inch pay streak ^{sample} in the vein was taken to the Arizona Bureau of Mines for determination, and the mineral was determined to be "tetrahedrite," ~~which~~ with high silver and mercury values.

Ore Values Mr. Canez claims that the ore assays 300 oz. silver per ton.

Past History Claims were located about 1930 by the present owners. They were leased out about 10 years ago to a party by the name of Miller; who sunk ~~the~~ 2 shafts and cut the open cut trench. Mr. Canez did not report any ore being shipped, but indications are that some ore from the long trench (150' x 22' x 3') was shipped.

Mine Workings (1) 1 open cut trench -- about 150' long -- 15 to 30 ft. deep -- from 3 to 4 ft. wide-- vertical along a quartz vein.
(2) 1 vertical shaft -- 35 ft. deep on same vein as the open cut trench. Owners worked in this shaft the past 3 months until a few days ago, and now have ~~of~~ stockpiles of 6 tons of high grade and 25 tons of low grade ore. Mr. Canez states that the vein is 3 ft. wide and the pay streak measures 9 in. and runs 300 oz. per ton in silver.
(3) 1 vertical shaft -- 55 ft. deep -- in bad shape and inaccessible.
(4) 1 inclined shaft (incl. 75 deg.) -- 62 ft. deep. This is on the same vein as vertical shaft mentioned above, but on a different vein from first two workings mentioned ~~above~~. Owners are now sinking this shaft deeper, having to date sunk it from 56' to 62' in depth.

Review of Recent Operations Owners started operating about 3 months ago, with Mr. Canez, his son, and one additional man. The vertical shaft (item 2 above) was first worked and the ore taken out was stockpiled for future shipment. Owners, however, obtained information from a person who was familiar with the old operations, that the old shaft (item 3) now mostly caved in, showed a rich and wide vein of ore. They plan, therefore, to sink 20 to 30 ft. more, and then drift to get under the old shaft, a distance of about 50 ft.