



CONTACT INFORMATION

Mining Records Curator
Arizona Geological Survey
1520 West Adams St.
Phoenix, AZ 85007
602-771-1601
<http://www.azgs.az.gov>
inquiries@azgs.az.gov

The following file is part of the

Arizona Department of Mines and Mineral Resources Mining Collection

ACCESS STATEMENT

These digitized collections are accessible for purposes of education and research. We have indicated what we know about copyright and rights of privacy, publicity, or trademark. Due to the nature of archival collections, we are not always able to identify this information. We are eager to hear from any rights owners, so that we may obtain accurate information. Upon request, we will remove material from public view while we address a rights issue.

CONSTRAINTS STATEMENT

The Arizona Geological Survey does not claim to control all rights for all materials in its collection. These rights include, but are not limited to: copyright, privacy rights, and cultural protection rights. The User hereby assumes all responsibility for obtaining any rights to use the material in excess of "fair use."

The Survey makes no intellectual property claims to the products created by individual authors in the manuscript collections, except when the author deeded those rights to the Survey or when those authors were employed by the State of Arizona and created intellectual products as a function of their official duties. The Survey does maintain property rights to the physical and digital representations of the works.

QUALITY STATEMENT

The Arizona Geological Survey is not responsible for the accuracy of the records, information, or opinions that may be contained in the files. The Survey collects, catalogs, and archives data on mineral properties regardless of its views of the veracity or accuracy of those data.

ARIZONA DEPARTMENT OF MINES AND MINERAL RESOURCES AZMILS DATA

PRIMARY NAME: ARIZONA MIDWAY MINE

ALTERNATE NAMES:
CHISHOLM

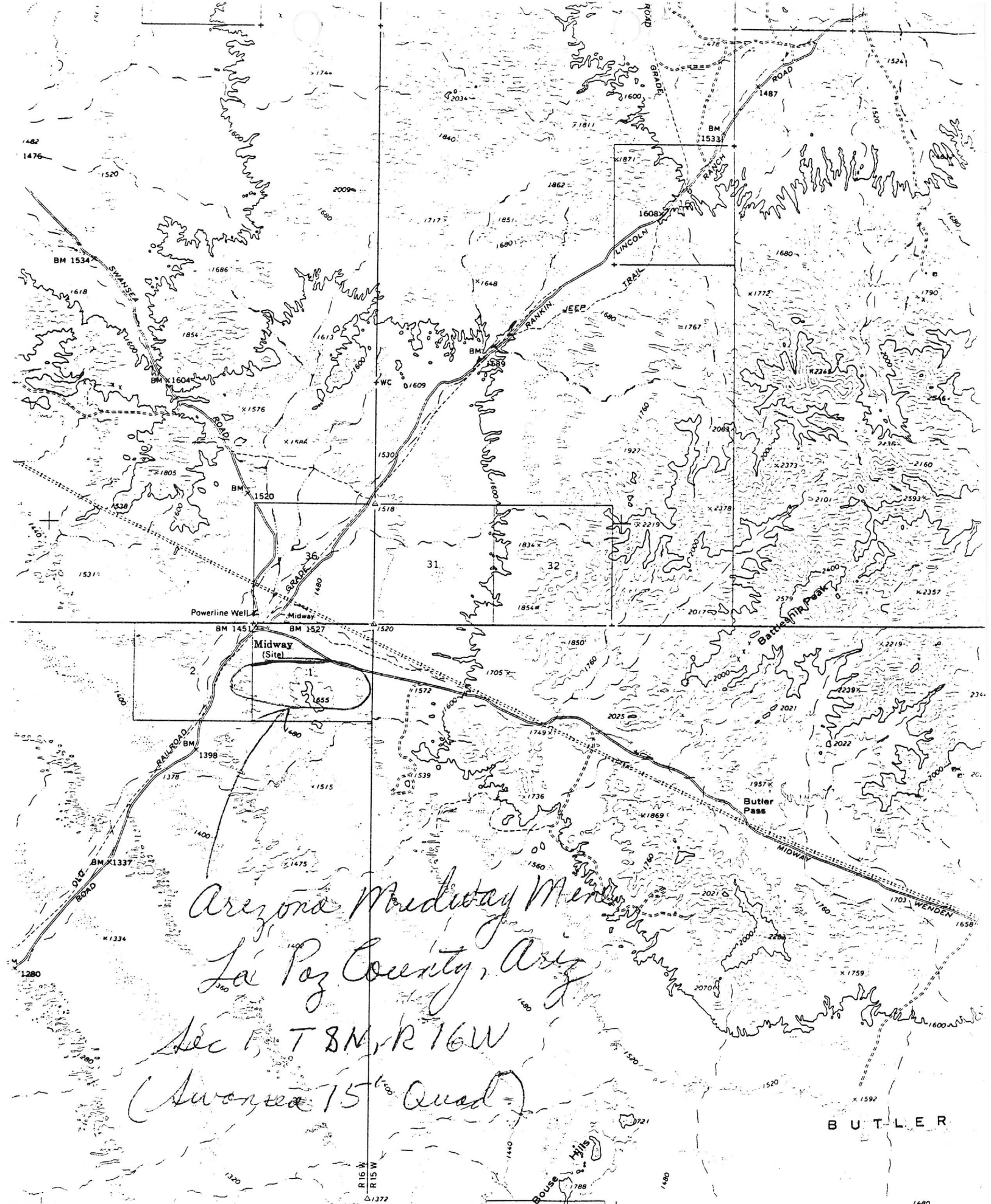
LA PAZ COUNTY MILS NUMBER: 129

LOCATION: TOWNSHIP 8 N RANGE 16 W SECTION 1 QUARTER S2
LATITUDE: N 34DEG 03MIN 44SEC LONGITUDE: W 113DEG 52MIN 44SEC
TOPO MAP NAME: SWANSEA - 15 MIN

CURRENT STATUS: PAST PRODUCER

COMMODITY:
COPPER OXIDE
GOLD LODE
SILVER
STONE MARBLE
CALCIUM MARBLE

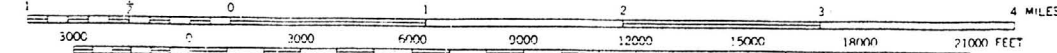
BIBLIOGRAPHY:
ADMMR ARIZONA MIDWAY MINE FILE
KEITH, S.B., 1978, INDEX OF MINING PROPERTIES
IN YUMA (NOW LA PAZ) COUNTY, ARIZONA, AZ BUR
OF MINES BULLETIN 192, P 162



Arizona Midway Merit
 La Paz County, Ariz
 Sec 1, T 8 N, R 16 W
 (Swansea 15th Quad)

BUTLER

(UTTING)
 3251 IV
 SCALE 1:62 500



REPORT ON THE PROPERTY OF THE
ARIZONA MIDWAY COPPER COMPANY.

LOCATION:

The property is located about one and one-half miles south-westerly from Midway, a station on the Arizona and Swansea Railroad, being a branch leading from Bouse, a station on the A. T. & S. Fe Railway (Parker Cutoff) to Swansea, where is located the property of the Swansea Consolidated Copper Mines. The property is about twenty-five miles east of the Colorado River, twelve miles south of the Bill Williams River, some sixteen miles southeasterly from the Planet Mine, and nine miles southwest from Swansea, fourteen miles easterly from Bouse, and twenty-five miles northerly from Cunningham Pass.

The property is reached by a good automobile road, in fact the same passes over the west claim of the group.

There are eleven full mining claims in the group, consisting of the following: Midway, Roadside, Midnight, Contention, Lucky Strike, Ruby, Big Newt, Yuma Chief, Success, Hillside, and Gold Nugget, making in all an estate of two hundred twenty (220) acres.

FORMATION:

The formation of the Arizona Midway property is a schist traversed by numerous reefs of limestone; the age of these rocks cannot be more specially determined than that they belong to the Palazoic era. In fact lime, granite, schist, diorite, porphyry, andesite, dacite, rhyolite being the predominant rocks of the district. The hills being a limestone formation with eruptive dykes cutting through them and also many belts of schist occurring. One of the principal croppings on the Big Newt claim is a contact between schist and lime. This schist is from three hundred to four hundred feet wide and shows copper stains wherever broken into. This entire width, in my opinion, will show an average of one and one-half to two per cent copper. The work which has been done on this

claim has developed some very fine ore. The ore on this claim though silicious, no doubt carrying from sixty to seventy per cent silica, would be necessary in case a smelter were erected for the reduction of the ore, or in case a concentrating plant were installed to treat the sulphide (which must be found below, and which will be found in a gangue that will be necessary to concentrate.

Most of the hills on the property are limestone and the crop-pings are very persistent and continuous, in many places being over fifty feet in width, and can be traced on the surface for over one mile. The limestone in the vein matter quite frequently is impregnated with iron and manganese oxides, which is a decomposed, leached mass carrying some carbonate of copper values.

TITLE:

The title to the property is held by location and by compliance with the laws of the United States governing mining properties, the work for 1917 having been done.

DEVELOPMENT:

Most of the development work has been done on the Big Newt, Lucky Strike, Success and Roadside. The work thus far done has been quite satisfactory in its results, and it is the intention of the management to prosecute the work as rapidly as possible, as there can be no question but that the Arizona-Midway Copper Company is warranted in proceeding as rapidly as possible in the development of the property.

The formation and general conditions are quite similar to those of the Old Signal Copper Company's mine at Swansea, which was developed under the management and direction of the writer.

All indications point to an immense body of ore underlying these lime reefs, and this taken in connection with the porphyry dykes which abound over and through the entire property, one can

at the possibilities of another porphyry-copper property being the most important of those already in operation in Arizona, it is not at all improbable here, and I am assured that every effort will be put forth that is compatible with good business sense and economical operation to prove the truth of this practically self-evident fact.

FACILITIES:

The property is without a doubt as favorably located as any copper property in the State of Arizona, it being less than two miles to a railroad, with a splendid automobile road leading to the mine.

Firewood of an excellent quality is found in abundance on the claims as well as on the surrounding country, and it will be a long time before this supply is exhausted. There are a number of wells in the country and it is the intention of the management to sink on the property at once to supply the needs of the camp, as well as to supply the necessary water for the operation of the machinery which will be installed on the property, as it is necessary to sink a double compartment shaft at once.

CONCLUSION:

The showing as seen on the surface, and as far as developments have progressed, is surely a most remarkable one, and without a question is one of the best prospects for a copper mine to be found in the State of Arizona. With the material for fluxing at hand, and the assurance of an abundance of water, and being practically on a railroad, the conditions are certainly most favorable for chief operation. The question of transportation is practically a negligible one as the distance to the railroad station is hardly two miles and there is one of the best constructed smelters at Swansea to be found in the State of Arizona, thus insuring a ready and permanent market for the ores.

As ores have been developed and especially adapted to leaching

and as there are numerous plants being operated in Arizona, using this method, there can be no question but that the operation of a leaching plant would be profitable.

Two samples of ore taken from the property and assayed by Mr. John C. Merrill, of this city, gave returns of \$1.24 in gold, 84 cents in silver, and 19.46% in copper. The other sample gave returns of \$2.06 in gold, 28 cents in silver and 15.82% in copper. Ores of this character will pay handsomely to ship.

I would advise the sinking of a double compartment shaft on the Success Claim and also to at once begin the prospecting of the ground with either core or churn drills, as all surface indications are such as will warrant the expenditure of money to prove up the extent and value of the ore bodies which surely exist here.

Respectfully submitted,

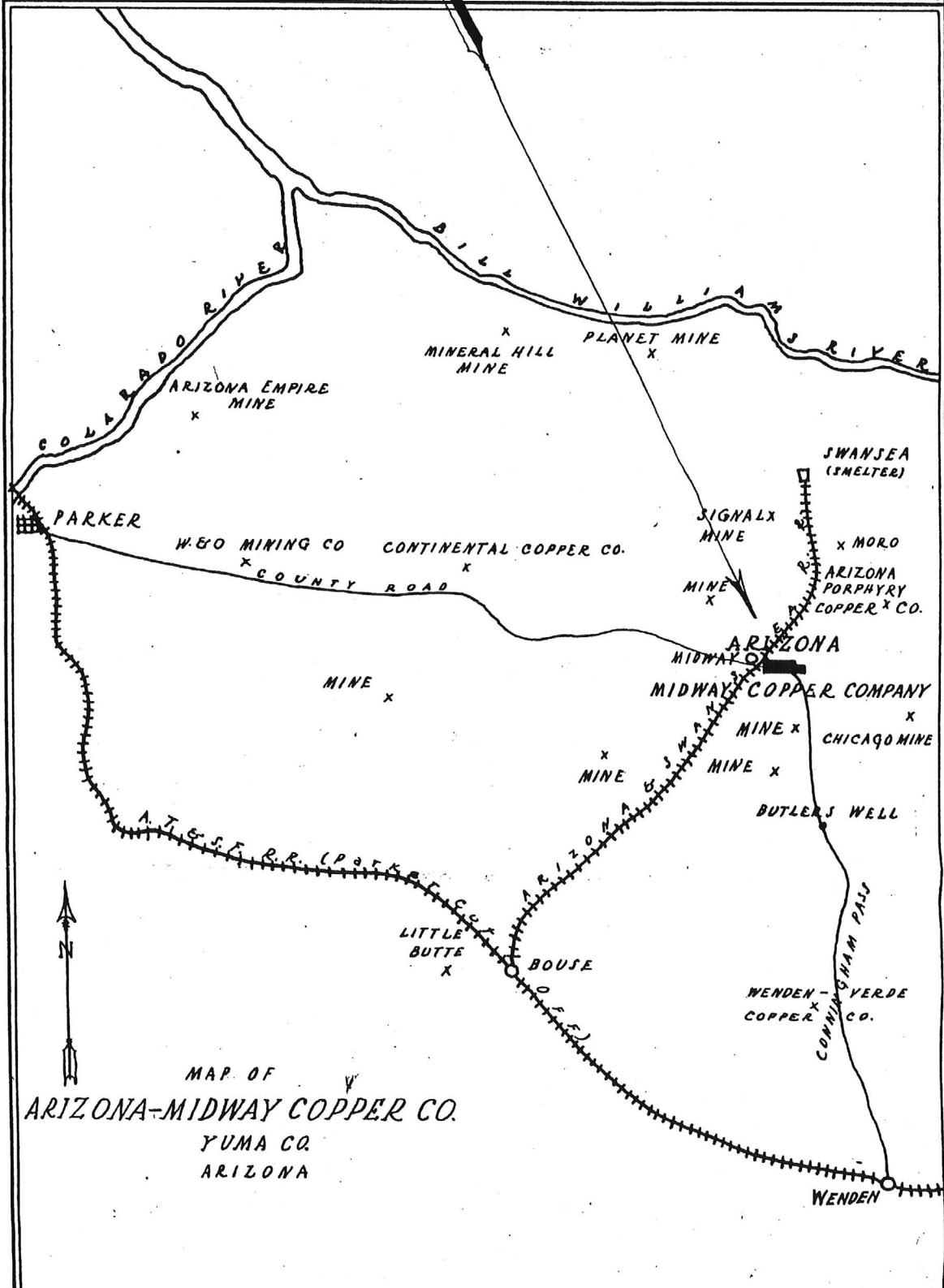
Newton Evans

Los Angeles, California, October 6, 1917.

MIDWAY

CONTENTION	RUBY	MIDNIGHT	
YUMA CHIEF	LUCKY STRIKE	GOLD NUGGET	SUCCESS
MIDWAY	ROAD SIDE	HILL SIDE	BIG NEWT

ARIZONA-MIDWAY COPPER COMPANY.



MAP OF
ARIZONA-MIDWAY COPPER CO.
 YUMA CO.
 ARIZONA

ARIZONA-MIDWAY MINE

REFERENCES

LA PAZ COUNTY
MIDWAY DIST
T8N R16W Sec. 1

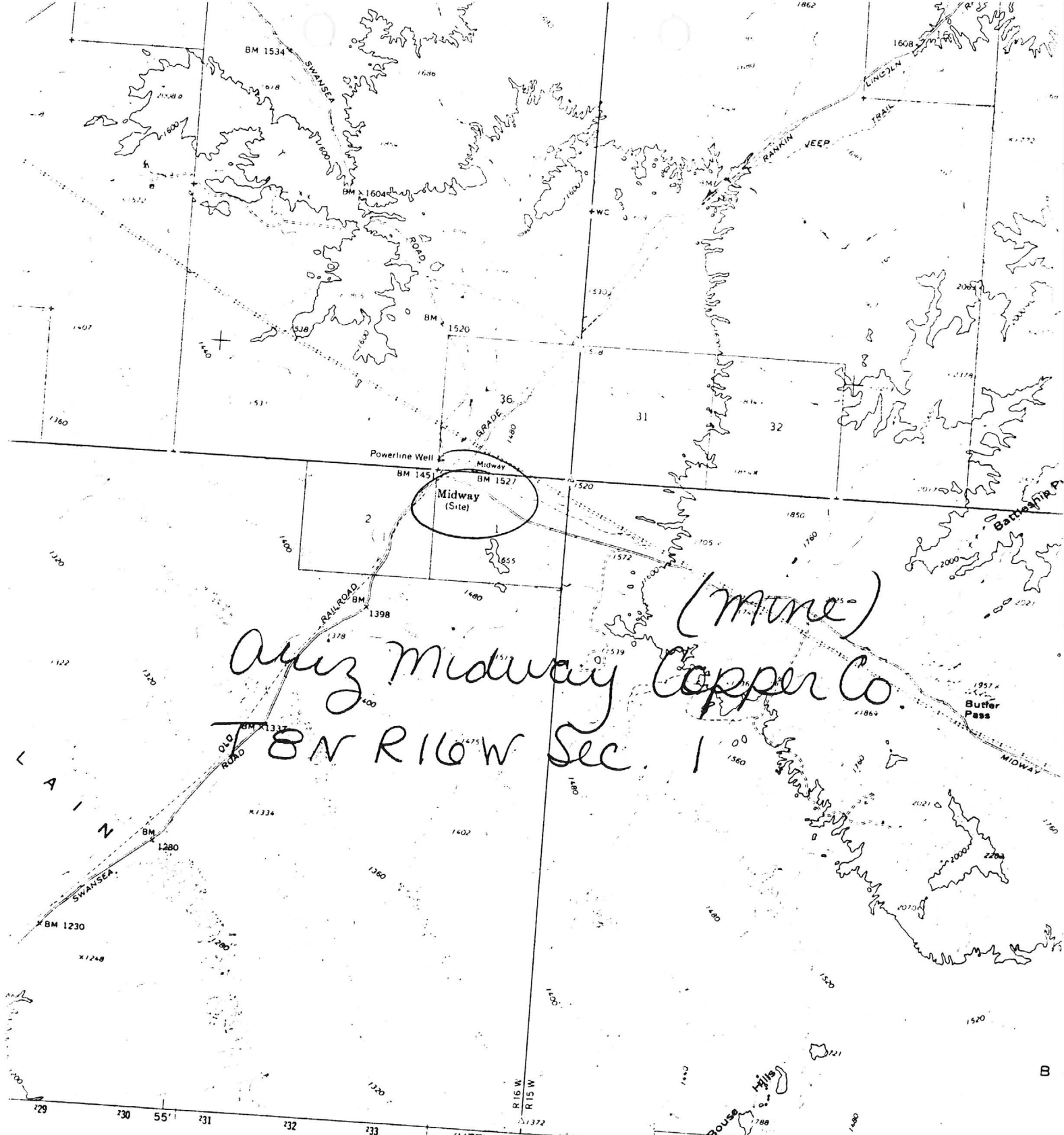
La Paz County MILS Index #129

Mining claims in the group: Midway, Roadside, Midnight, Contention, Lucky Strike,
Ruby, Big Newt, Yuma Chief, Success, Hillside, Gold Nugget

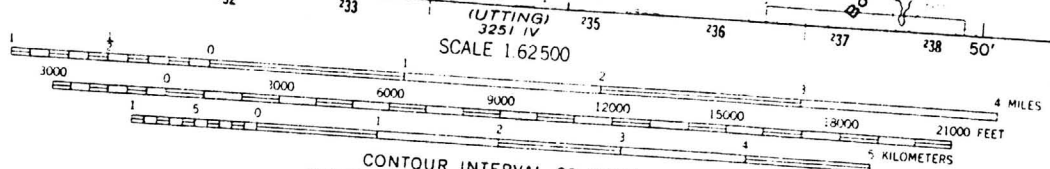
ABM Bull. 192, p. 162

Swansea 15' Topo (included in file)

120



(mine)
 Ariz Midway Copper Co.
 T8N R16W Sec. 1



CONTOUR INTERVAL 80 FEET
 DOTTED LINES REPRESENT 40-FOOT CONTOURS
 DATUM IS MEAN SEA LEVEL

Swansea 15'

THIS MAP COMPLIES WITH NATIONAL MAP ACCURACY STANDARDS
 FOR SALE BY U.S. GEOLOGICAL SURVEY, DENVER, COLORADO 80225, OR WASHINGTON, D. C. 20242
 A FOLDER DESCRIBING TOPOGRAPHIC MAPS AND SYMBOLS IS AVAILABLE ON REQUEST



MAGNETIC NORTH
 14 1/2' N
 258 MILS

Name of Mine or Prospect:	Township	Range	Section	Priority:
Arizona Midway	8N	16W	1	C
Principal Minerals:	1:250,000 Quad		7.5' - 15' Quad	
Malachite, Cuprite	Prescott		Swansea	
Associated Minerals:	District		Principal Product	
Gold and Silver	Cienega		Copper	
Type of Operation:	County	State	Type of Deposit	
Surface	Yuma	Ar.	Vein-replacement	

Ownership or Controlling Interest:
Consult current USBLM mining claim records

Access: Location approximately 14 miles northeast of Bouse, Ar., on Swansea Road.

Structural Control or Geological Association:

"Spotty oxidized copper mineralization in Precambrian schist containing limestone bands. Some high grade copper pods, with some limited exposures of vancolored marbles bound by schists."¹

Age of Mineralization:

Production History	Geochemical Analyses
Limited production 1917.	

References

- 1) Keith (1978), p. 124.

REPORT ON THE PROPERTY OF THE
ARIZONA-MIDWAY COPPER COMPANY.

LOCATION:

The property is located about one and one-half miles southwesterly from Midway, a station on the Arizona and Swansea Railroad, being a branch leading from Bouse, a station on the A. T. & S. Fe Railway (Parker Cutoff) to Swansea, where is located the property of the Swansea Consolidated Copper Mines. The property is about twenty-five miles east of the Colorado River, twelve miles south of the Bill Williams River, some sixteen miles southeasterly from the Planet Mine, and nine miles southwest from Swansea, fourteen miles easterly from Bouse, and twenty-five miles northerly from Cunningham Pass.

The property is reached by a good automobile road, in fact the same passes over the west claim of the group.

There are eleven full mining claims in the group, consisting of the following: Midway, Roadside, Midnight, Contention, Lucky Strike, Ruby, Big Newt, Yuma Chief, Success, Hillside, and Gold Nugget, making in all an estate of two hundred twenty (220) acres.

FORMATION:

The formation of the Arizona Midway property is a schist traversed by numerous reefs of limestone; the age of these rocks cannot be more specially determined than that they belong to the Palazoic era. In fact lime, granite, schist, diorite, porphyry, andesite, dacite, rhyolite being the predominant rocks of the district. The hills being a limestone formation with eruptive dykes cutting through them and also many belts of schist occurring. One of the principal croppings on the Big Newt claim is a contact between schist and lime. This schist is from three hundred to four hundred feet wide and shows copper stains wherever broken into. This entire width, in my opinion, will show an average of one and one-half to two per cent copper. The work which has been done on this

claim has developed some very fine ore. The ore on this claim though silicious, no doubt carrying from sixty to seventy per cent silica, would be necessary in case a smelter were erected for the reduction of the ore, or in case a concentrating plant were installed to treat the sulphide which must be found below, and which will be found in a gangue that will be necessary to concentrate.

Most of the hills on the property are limestone and the crop-pings are very persistent and continuous, in many places being over fifty feet in width, and can be traced on the surface for over one mile. The limestone in the vein matter quite frequently is im-pregnated with iron and manganese oxides, which is a decomposed, leached mass carrying some carbonate of copper values.

TITLE:

The title to the property is held by location and by com-pliance with the laws of the United States governing mining properties, the work for 1917 having been done.

DEVELOPMENT:

Most of the development work has been done on the Big Newt, Lucky Strike, Success and Roadside. The work thus far done has been quite satisfactory in its results, and it is the intention of the management to prosecute the work as rapidly as possible, as there can be no question but that the Arizona-Midway Copper Company is warranted in proceeding as rapidly as possible in the development of the property.

The formation and general conditions are quite similar to those of the Old Signal Copper Company's mine at Swansea, which was developed under the management and direction of the writer.

All indications point to an immense body of ore underlying these lime reefs, and this taken in connection with the porphyry dykes which abound over and through the entire property, one can

at the possibilities of another porphyry-copper property being the most important of those already in operation in Arizona, but at all improbable here, and I am assured that every effort will be put forth that is compatible with good business sense and economical operation to prove the truth of this practically self-evident fact.

FACILITIES:

The property is without a doubt as favorably located as any copper property in the State of Arizona, it being less than two miles to a railroad, with a splendid automobile road leading to the mine.

Firewood of an excellent quality is found in abundance on the claims as well as on the surrounding country, and it will be a long time before this supply is exhausted. There are a number of wells in the country and it is the intention of the management to sink on the property at once to supply the needs of the camp, as well as to supply the necessary water for the operation of the machinery which will be installed on the property, as it is necessary to sink a double compartment shaft at once.

CONCLUSION:

The showing as seen on the surface, and as far as developments have progressed, is surely a most remarkable one, and without a question is one of the best prospects for a copper mine to be found in the State of Arizona. With the material for fluxing at hand, and the assurance of an abundance of water, and being practically on a railroad, the conditions are certainly most favorable for chief operation. The question of transportation is practically a negligible one as the distance to the railroad station is hardly two miles and there is one of the best constructed smelters at Swansea to be found in the State of Arizona, thus insuring a ready and permanent market for the ores.

As ores have been developed and especially adapted to leaching

and as there are numerous plants being operated in Arizona, using this method, there can be no question but that the operation of a leaching plant would be profitable.

Two samples of ore taken from the property and assayed by Mr. John C. Merrill, of this city, gave returns of \$1.24 in gold, 84 cents in silver, and 19.46% in copper. The other sample gave returns of \$2.06 in gold, 28 cents in silver and 15.82% in copper. Ores of this character will pay handsomely to ship.

I would advise the sinking of a double compartment shaft on the Success Claim and also to at once begin the prospecting of the ground with either core or churn drills, as all surface indications are such as will warrant the expenditure of money to prove up the extent and value of the ore bodies which surely exist here.

Respectfully submitted,

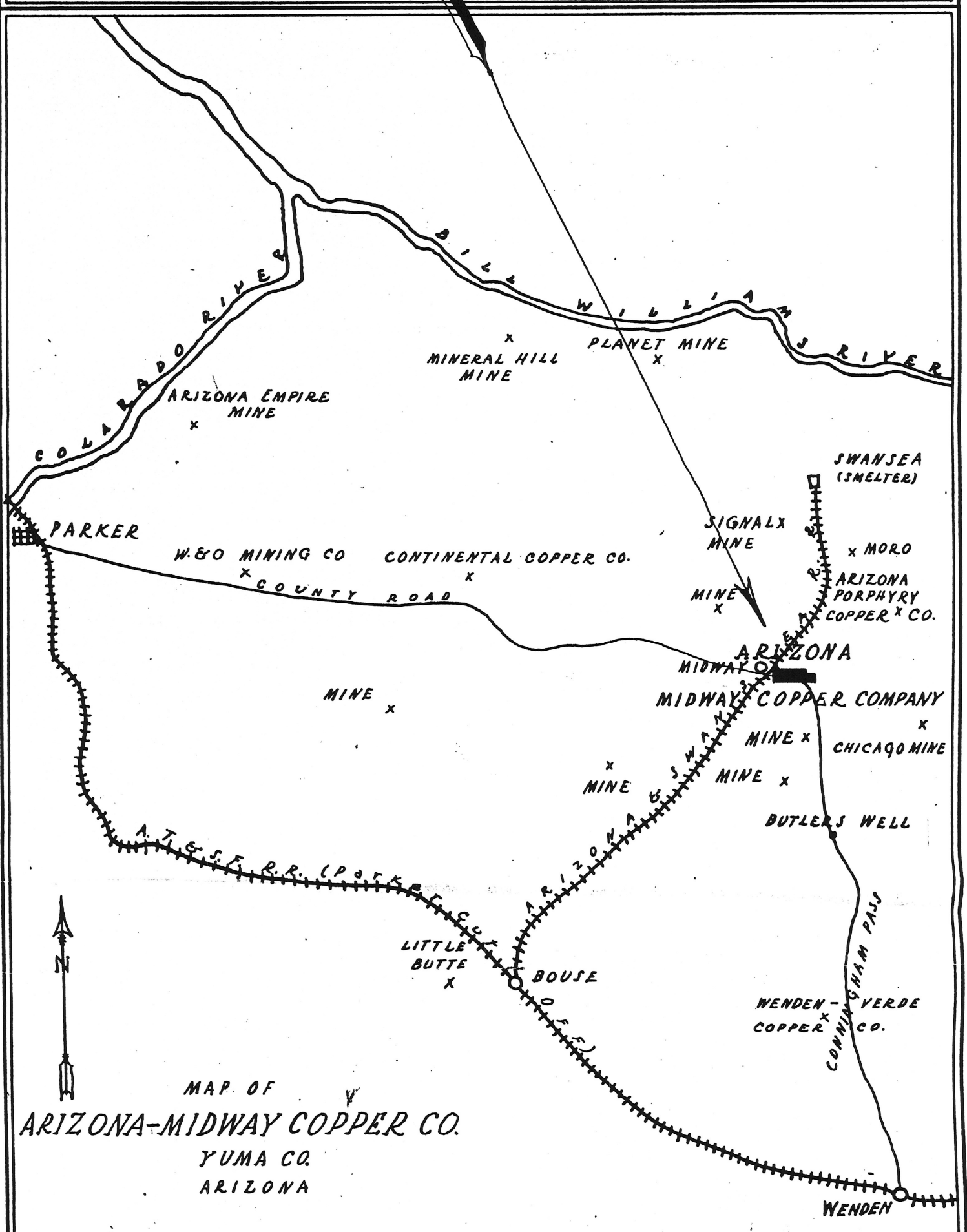
Newton Evans.

Los Angeles, California, October 6, 1917.

MIDWAY

CONTENTION	RUBY	MIDNIGHT	
YUMA CHIEF	LUCKY STRIKE	GOLD NUGGET	SUCCESS
MIDWAY	ROAD SIDE	HILL SIDE	BIG NEWT

ARIZONA-MIDWAY COPPER COMPANY.



MAP OF
ARIZONA-MIDWAY COPPER CO.
YUMA CO.
ARIZONA