



CONTACT INFORMATION

Mining Records Curator
Arizona Geological Survey
1520 West Adams St.
Phoenix, AZ 85007
602-771-1601
<http://www.azgs.az.gov>
inquiries@azgs.az.gov

The following file is part of the

Arizona Department of Mines and Mineral Resources Mining Collection

ACCESS STATEMENT

These digitized collections are accessible for purposes of education and research. We have indicated what we know about copyright and rights of privacy, publicity, or trademark. Due to the nature of archival collections, we are not always able to identify this information. We are eager to hear from any rights owners, so that we may obtain accurate information. Upon request, we will remove material from public view while we address a rights issue.

CONSTRAINTS STATEMENT

The Arizona Geological Survey does not claim to control all rights for all materials in its collection. These rights include, but are not limited to: copyright, privacy rights, and cultural protection rights. The User hereby assumes all responsibility for obtaining any rights to use the material in excess of "fair use."

The Survey makes no intellectual property claims to the products created by individual authors in the manuscript collections, except when the author deeded those rights to the Survey or when those authors were employed by the State of Arizona and created intellectual products as a function of their official duties. The Survey does maintain property rights to the physical and digital representations of the works.

QUALITY STATEMENT

The Arizona Geological Survey is not responsible for the accuracy of the records, information, or opinions that may be contained in the files. The Survey collects, catalogs, and archives data on mineral properties regardless of its views of the veracity or accuracy of those data.

05/04/87

ARIZONA DEPARTMENT OF MINES AND MINERAL RESOURCES FILE DATA

PRIMARY NAME: ARIZONA JOE.

ALTERNATE NAMES:

LA PAZ COUNTY MILS NUMBER: 768

LOCATION: TOWNSHIP 4 N RANGE 20 W SECTION 12 QUARTER C
LATITUDE: N 33DEG 41MIN 59SEC LONGITUDE: W 114DEG 16MIN 33SEC
TOPO MAP NAME: MIDDLE CAMP MTN - 7.5 MIN

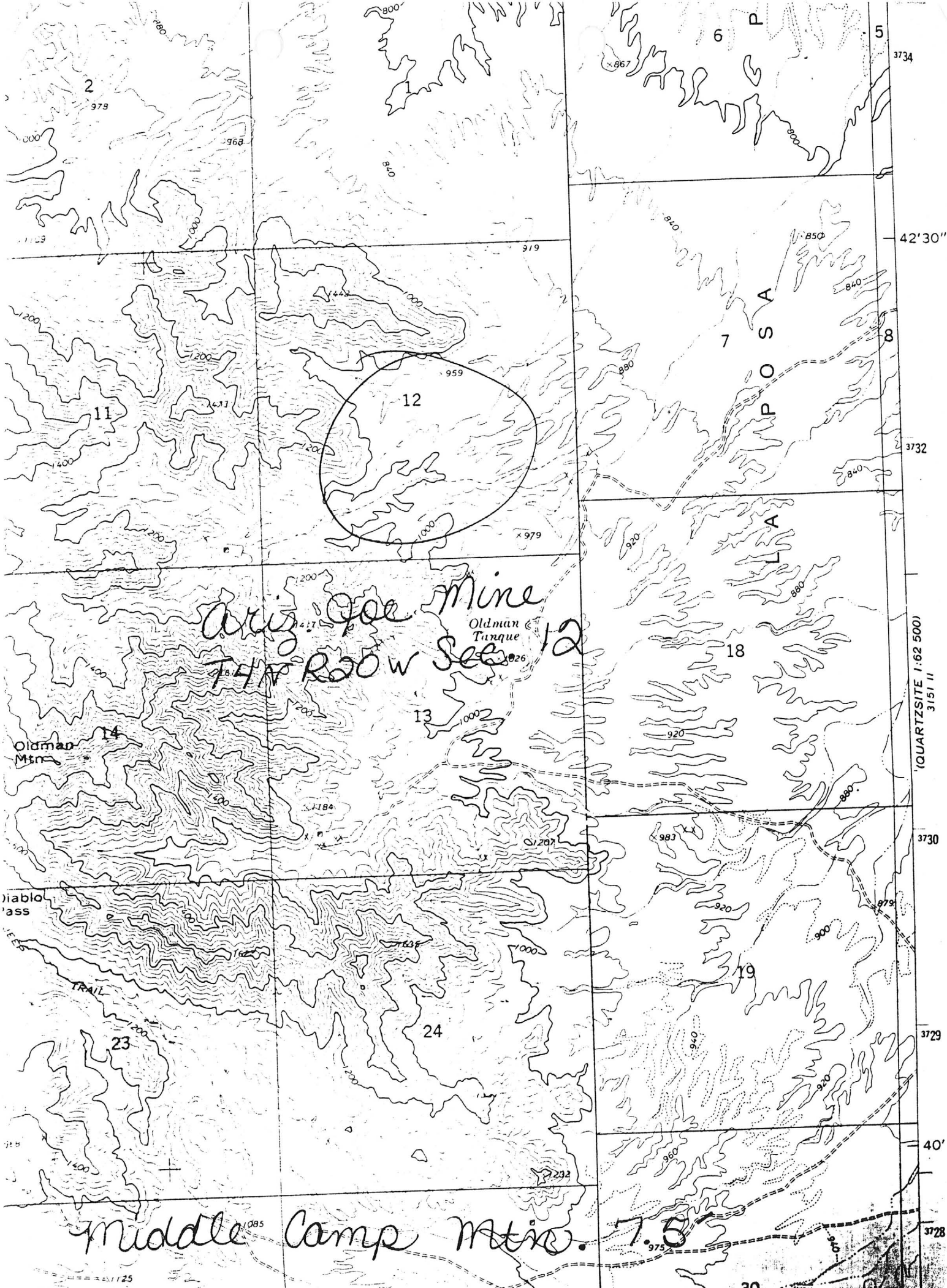
CURRENT STATUS: UNKNOWN

COMMODITY:

COPPER SEE BIBLIO
SILVER
GOLD LODE

BIBLIOGRAPHY:

ADMMR ARIZONA JOE MINE FILE
ADDITIONAL HOLDINGS IN T4N R20W SEC 13 &
T4N R19W SEC. 7,18



Ariz. Joe Mine
T4W R20W Sec. 12

QUARTZSITE 1:62 500'
3151 II

Middle Camp Mtn.

7.5

DEPARTMENT OF MINERAL RESOURCES
STATE OF ARIZONA
FIELD ENGINEERS REPORT

Mine Arizona Joe Mine
District 5 m. NW. of Quartzsite
Subject: Present status

Date April 10, 1952
Engineer Mark Gemmill

I was unable to locate Mr. Voag the last reported owner. Information I could get indicates that the property is inactive. It is not known whether assessment has been done recently

MA-25

DEPARTMENT OF MINERAL RESOURCES
STATE OF ARIZONA
OWNERS MINE REPORT

Date 2/16/40.

Mine Arizona Joe
District Pima District - Yuma Ct.
Former name
Owner Joe C. Voag. ✓
Operator same
President
Mine Supt.
Principal Metals COPPER SILVER & GOLD. ✓
Production Rate NONE
Power: Amt. & Type
Operations: Present Assessment work.

Location 4 1/2 to 5 miles - N.W. from
Quartzsite -
1800 ft. W of SECTION POST. T. 4 N. R. 20 W.
Address R. 19 W. - SECT 12-7-13 & 14
Address 18 N. 2nd St - PHOENIX -
Gen. Mgr. —
Mill Supt. —
Men Employed —
Mill: Type & Cap. —

Operations Planned awaiting financing.

Number Claims, Title, etc. 3 claims - Ariz. Joe - Ariz. Extension & Joe C. Voag.
Original locations 1928 & 1929.
Exemptions applied for.
Assessment - for 1939-40

Description: Topog. & Geog.
Foot hills of Dome Rock - Mountains.
Low hills - Mesquite & Sem wood -

Mine Workings: Amt. & Condition 1 shaft - 4 ft. — No timber — OK.
" 30 ft. — " "
" 14 ft. — Filled with rock.
Created in wash.

Geology & Mineralization Country rock - granite - many vein-stained
& manganese stained dikes -

Sugar quartz - gangue in vein. Iron stained
with schist near vein.

Ore: Positive & Probable, Ore Dumps, Tailings

Vein shows 9 ft wide - in Bottom.
Vertical -

Mine, Mill Equipment & Flow Sheet

No equipment.

Road Conditions, Route.

mine road - passable in car - can be
easily be put in good shape - Go North pass
School house - take N.W. road - 1/4 mile from town

Water Supply

Domestic water hauled from quartzite.

Brief History.

Found & discovered by owner in 1928.

Special Problems, Reports Filed

Need money for development.

Remarks

Assay from outcrop showed 25.02% Cu - .043% Au - 5.0-02. Ag
16.8 .03 19.1
18.10 .02 3.0

If property for sale: Price, terms and address to negotiate. ? -

Willing to give short option
or sell outright. Terms ~~and~~ price reasonable.

Signed.....

Joe C. Toag

Use additional sheets if necessary.

(Submitted sample for classification)