



CONTACT INFORMATION

Mining Records Curator
Arizona Geological Survey
1520 West Adams St.
Phoenix, AZ 85007
602-771-1601
<http://www.azgs.az.gov>
inquiries@azgs.az.gov

The following file is part of the

Arizona Department of Mines and Mineral Resources Mining Collection

ACCESS STATEMENT

These digitized collections are accessible for purposes of education and research. We have indicated what we know about copyright and rights of privacy, publicity, or trademark. Due to the nature of archival collections, we are not always able to identify this information. We are eager to hear from any rights owners, so that we may obtain accurate information. Upon request, we will remove material from public view while we address a rights issue.

CONSTRAINTS STATEMENT

The Arizona Geological Survey does not claim to control all rights for all materials in its collection. These rights include, but are not limited to: copyright, privacy rights, and cultural protection rights. The User hereby assumes all responsibility for obtaining any rights to use the material in excess of "fair use."

The Survey makes no intellectual property claims to the products created by individual authors in the manuscript collections, except when the author deeded those rights to the Survey or when those authors were employed by the State of Arizona and created intellectual products as a function of their official duties. The Survey does maintain property rights to the physical and digital representations of the works.

QUALITY STATEMENT

The Arizona Geological Survey is not responsible for the accuracy of the records, information, or opinions that may be contained in the files. The Survey collects, catalogs, and archives data on mineral properties regardless of its views of the veracity or accuracy of those data.

04/11/89

ARIZONA DEPARTMENT OF MINES AND MINERAL RESOURCES FILE DATA

PRIMARY NAME: ARIZONA BECK

ALTERNATE NAMES:

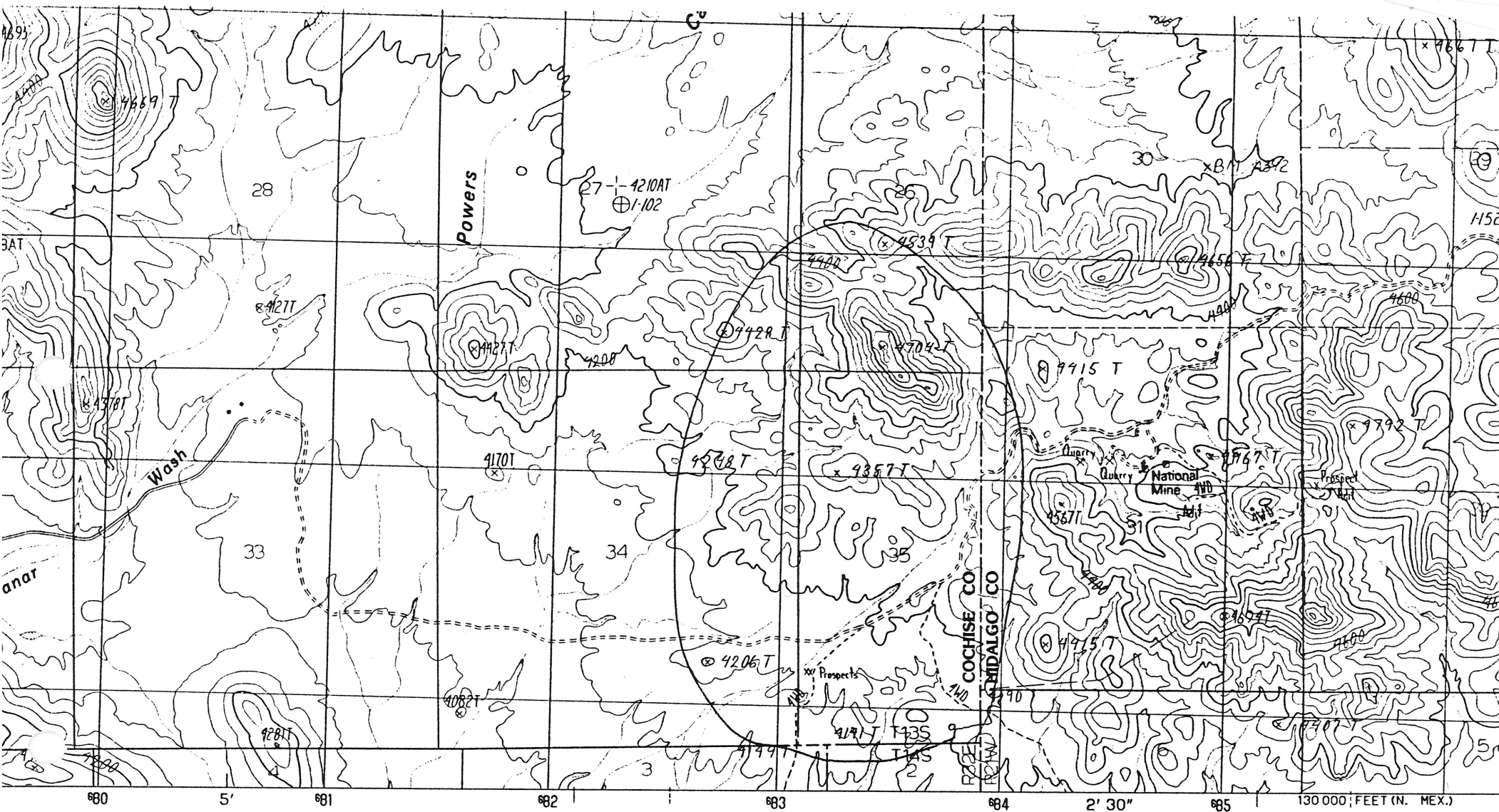
COCHISE COUNTY MILS NUMBER: 889

LOCATION: TOWNSHIP 13 S RANGE 32 E SECTION 35 QUARTER SW
LATITUDE: N 32DEG 15MIN 20SEC LONGITUDE: W 109DEG 03MIN 20SEC
TOPO MAP NAME: DOUBTFUL CANYON - 7.5 MIN

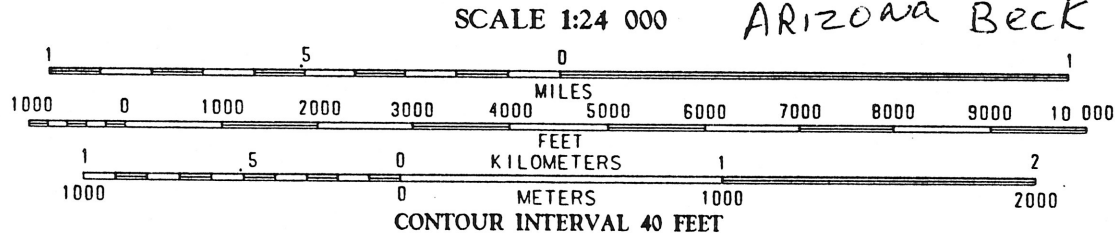
CURRENT STATUS: RAW PROSPECT

COMMODITY:
GOLD
SILVER

BIBLIOGRAPHY:
ADMMR ARIZONA BECK FILE
USGS MAP I-1310-C, 1985



NORTH



Arizona Beck



QUADRANGLE LOCATION

SIONAL MAP
d from original
pt drawings. Infor-
own as of date of
phy. 1

THIS MAP COMPLIES WITH NATIONAL MAP ACCURACY STANDARDS
FOR SALE BY U.S. GEOLOGICAL SURVEY, DENVER, COLORADO 80225

1	2	3	1 Orange Butte
			2 Engine Mountain
			3 Summit
4		5	4 San Simon
			5 Mondel
			6 Vanar NW
6	7	8	7 Vanar
			8 Steins