



CONTACT INFORMATION

Mining Records Curator
Arizona Geological Survey
1520 West Adams St.
Phoenix, AZ 85007
602-771-1601
<http://www.azgs.az.gov>
inquiries@azgs.az.gov

The following file is part of the

Arizona Department of Mines and Mineral Resources Mining Collection

ACCESS STATEMENT

These digitized collections are accessible for purposes of education and research. We have indicated what we know about copyright and rights of privacy, publicity, or trademark. Due to the nature of archival collections, we are not always able to identify this information. We are eager to hear from any rights owners, so that we may obtain accurate information. Upon request, we will remove material from public view while we address a rights issue.

CONSTRAINTS STATEMENT

The Arizona Geological Survey does not claim to control all rights for all materials in its collection. These rights include, but are not limited to: copyright, privacy rights, and cultural protection rights. The User hereby assumes all responsibility for obtaining any rights to use the material in excess of "fair use."

The Survey makes no intellectual property claims to the products created by individual authors in the manuscript collections, except when the author deeded those rights to the Survey or when those authors were employed by the State of Arizona and created intellectual products as a function of their official duties. The Survey does maintain property rights to the physical and digital representations of the works.

QUALITY STATEMENT

The Arizona Geological Survey is not responsible for the accuracy of the records, information, or opinions that may be contained in the files. The Survey collects, catalogs, and archives data on mineral properties regardless of its views of the veracity or accuracy of those data.

02/28/91

ARIZONA DEPARTMENT OF MINES AND MINERAL RESOURCES FILE DATA

PRIMARY NAME: ARIZONA BARITE

ALTERNATE NAMES:

PHOENIX GROUP
GRANITE REEF
CHRISMAN BARITE
MESA BARITE CLAIMS
MACCO

MARICOPA COUNTY MILS NUMBER: 394

LOCATION: TOWNSHIP 2 N RANGE 7 E SECTION 4 QUARTER SW
LATITUDE: N 33DEG 32MIN 27SEC LONGITUDE: W 111DEG 38MIN 39SEC
TOPO MAP NAME: GRANITE REEF DAM - 7.5 MIN

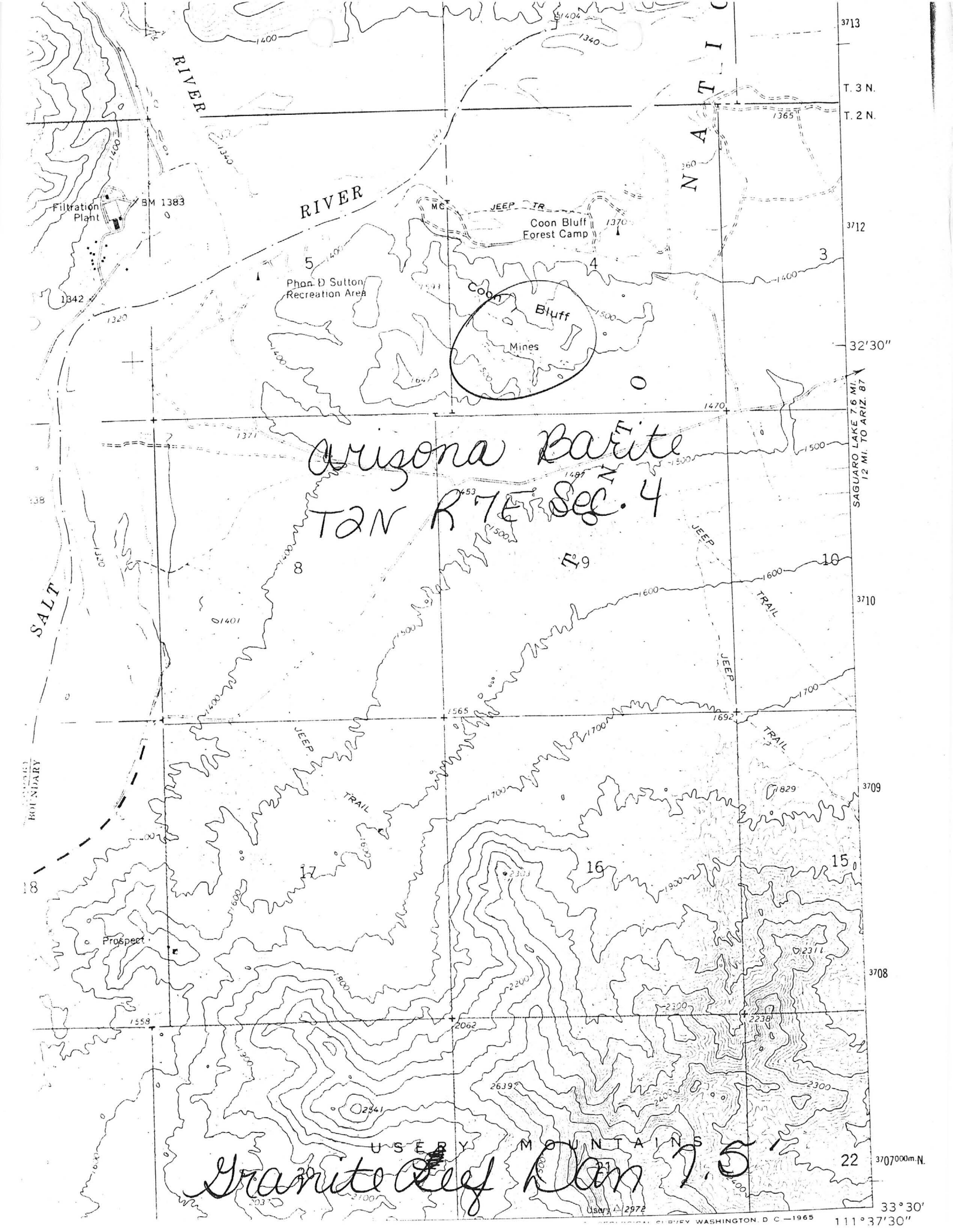
CURRENT STATUS: PAST PRODUCER

COMMODITY:

BARIUM BARITE
IRON FERROUS OXID

BIBLIOGRAPHY:

USGS GRANITE REEF DAM QUAD
ADMMR ARIZONA BARITE FILE
ADMMR "U" FILE MARICOPA BA-1
STEWART L A & PFISTER A J USBM RI 5651 P 32
BROBST D A AZBM BULL 180 P 312 & 314
WILSON F & ROSEVEARE G AZBM BULL 155 P 11
BROBST D USGS 1072-B P 106



RIVER

RIVER

N A T I O N A L

Filtration Plant

BM 1383

Coon Bluff Forest Camp

Phan D Sutton Recreation Area

Coon Bluff Mines

Arizona Barite
TAN R 7E Sec. 4

SALT

BOUNDARY

Prospect

USERY MOUNTAINS

Granite Reef Dam 7.5

3713

T. 3 N.

T. 2 N.

3712

32'30"

SAGUARO LAKE 7.6 MI.
12 MI. TO ARIZ. 87

3710

3709

3708

3707000m N.

33°30'

111°37'30"

ARIZONA BARITE

MARICOPA
T2N R7E Sec. 4

See: ABM Bull. 180, p. 312, 314

RI 5651 p. 32

"U" File

AZBM Bull. 155 p 11

AZBM Bull. 180p. 312, 314

USGS Bull 1072 p..106

MILS Sheet sequence number 004013026

Geology File - Ayer, Maynard R., 1963, Mineral Resources at
Maxwell Reservoir Site, Arizona, Maricopa County

Maricopa County MILS Index #394

AKA: Phoenix Group, Granite Reef, Chrisman Barite, Mesa Barite Claims, Macco
Granite Reef Dam, AZ 7.5' Topo (included in file)

Arizona Department of Mines and Mineral Resources

INFORMATION FROM MINE CARDS IN MUSEUM

ARIZONA

Maricopa County

MM-9135 Barite

MM-9136 "

MM-9137 "

MM-9138 "

Arizona Barite Mine

AKA Granite Reef or

Macco MILS # 394

S - AREA

ARIZONA BARITE (203)

T2N

R7E

Sec 4

SW $\frac{1}{2}$

PAINE, William F. *Box 926 Mesa Home*) 77 NJ
 P. O. Box 1305 *505 Security Bldg. Phone*
 Prescott, Ariz. Phoenix

See OPA REPORTS - re gas application 11-27-44
 See ARIZ. BARITE - re gas application 6-3-45

Re invoice See P file 9-10-47

(See Arizona Barite)
 Barite

Maricopa 7 - 1 T 2 N, R 7 E

W. F. Paine, Box 926, Mesa '45

NAME OF MINE: ARIZONA BARITE COUNTY: Maricopa
 OWNER: (Ariz. Barite Co.), Houston DISTRICT: Barite
 Oil Field Material Co., Houston, Ariz. METALS: Barite
 3/4 mi. up Salt River from Granite Reef Dam
 OPERATOR AND ADDRESS MINE STATUS

Date:	OPERATOR AND ADDRESS	Date:	MINE STATUS
4/14/45	W.F. Paine, San Carlos Hotel Phoenix	4/45	Developing
1/47	Box 926, Mesa, Ariz.	1/47	& shipping

Date: 1-1947 ✓

Name of Mine PHOENIX

Location COON BLUE

Operator ARIZONA BARITE CO.

Address P.O. 926 Mesa, Ariz

Metals Produced Barite

Developing Shipping

Financing Planning Operations Soon

HOUSTON OIL FIELD MATERIAL CO.
 E. H. Robertson, Vice President
 Houston, Texas

See CHRISMAN BARITE
now Ariz Barite - 9-45

3-19-45

C O P Y

Tucson, Arizona, (Received 7-14-58)
July, 12, (Dept. Mineral Resources)
19 58 (Phoenix, Arizona)

Department of Mineral Resources
State of Arizona
Mineral Bldg., Fair Grounds
Phoenix, Arizona

Attention Mr. Frank Knight.

Dear Mr. Knight.

In answer to your letter, of July Tenth, sold the
✓ Mesa Barite Claims to Mr. ✓ E. H. Robertson, of The
✓ Houston Oil Field Material Co." , Houston, Texas,
Twelve years ago. After spending about One Million
Dollars in development, this firm had to stop
operation, on account, of their inability, to obtain
a competitive freight rate.

It is this lack of cooperation that gives Arizona's
mining industry a set back, and taboo. This situation
is most deplorable, when reliable capital is inter-
ested and invested. Suggest you use your good
offices to remedy this condition.

Yours very truly,

✓ F. O. CHRISTMANN
1040 North First Ave.

Been shut down for a couple months a/c word from Mr.

Payne to RICH.

~~11-2-55~~

United States Senate

DEPT. MINERAL RESOURCES

MEMORANDUM

MAY 17 1945

PROJECT SECTION ANTON May 15, 1945

Dear Chuck,

I did a little more on the Barite case with the Petroleum Administrator for War, and he has softened up quite a bit.

But the case, as I expected, has gone to the Project section, which undoubtedly will kill it off, and this will probably prejudice against handling it from the field as I had suggested if and when this is tried.

It is always best to avoid a route which will give a bad record.

Bill

35618
12-19-45



United States Senate

DEPT. OF GENERAL RESOURCES
MEMORANDUM
APR 18 1945
ANIZ April 15

Dear Chuck...

Re your wire of the 13th about the Arizona Barite. I did not wire Paine as it was not possible to get further information than I already had mailed the Company with a copy to you.

I have taken steps to push the matter before I leave, and while I am away.

Bill

United States Senate

MEMORANDUM May 18

Dear Chuck -

We talked to the WPB Project

Analysis Section again today on the Arizona Barite Case. The inclination to approve it gets stronger. Will get after PAW again and try to get a written OK and if so the deal stands a chance.

Bill

the account of Arizona Department of Mineral Resources

1206

SERVICE DESIRED
CABLE
ORDINARY
<input checked="" type="checkbox"/> URGENT RATE
DEFERRED
NIGHT LETTER

should check class of service otherwise the message will be transmitted as a telegram or ordinary cablegram.

WESTERN UNION

A. N. WILLIAMS
PRESIDENT

CHECK
ACCOUNTING INFORMATION
TIME FILED

and the following telegram, subject to the terms on back hereof, which are hereby agreed to

A W Wadill
Houston Oil Fields Materials Co
Houston Texas

9/2/46

FOR VICTORY
BUY
WAR BONDS
TODAY

Strongly request you send Bill Paine to American Mining Congress meeting in Denver Sept 8 to 12 It will be an unusually instructive meeting and we are anxious for a strong Arizona delegation so we can get the meeting for Arizona next year.

Chas. H. Dunning.

Charge to the account of _____ \$

CLASS OF SERVICE DESIRED	
DOMESTIC	CABLE
TELEGRAM	ORDINARY
DAY LETTER	URGENT RATE
SERIAL	DEFERRED
NIGHT LETTER	<input checked="" type="checkbox"/> NIGHT LETTER

Patrons should check class of service desired; otherwise the message will be transmitted as a telegram or ordinary cablegram.

WESTERN UNION

1206

A. N. WILLIAMS
PRESIDENT

CHECK
ACCOUNTING INFORMATION
TIME FILED

Send the following telegram, subject to the terms on back hereof, which are hereby agreed to

NIGHT LETTER

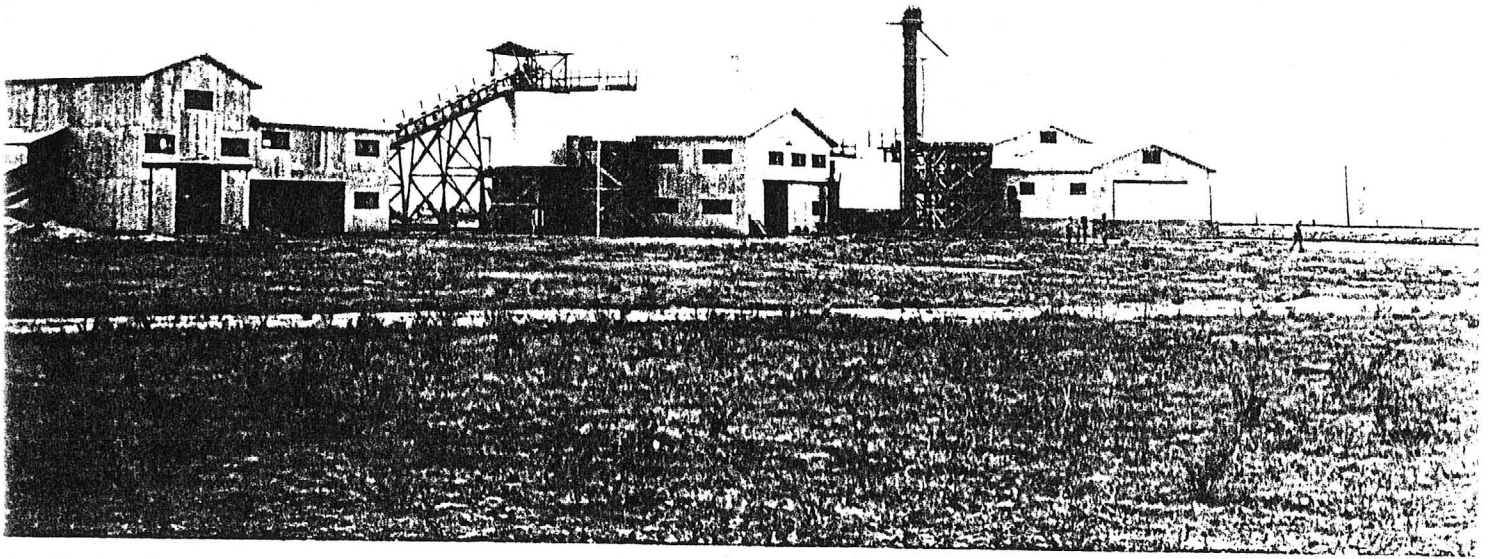
Phoenix, Arizona, April 13, 1945

FOR VICTORY
BUY
WAR BONDS
TODAY

W. C. Broadgate
c/o Senator Carl Hayden
Room 131
Senate Office Building
Washington, D. C.

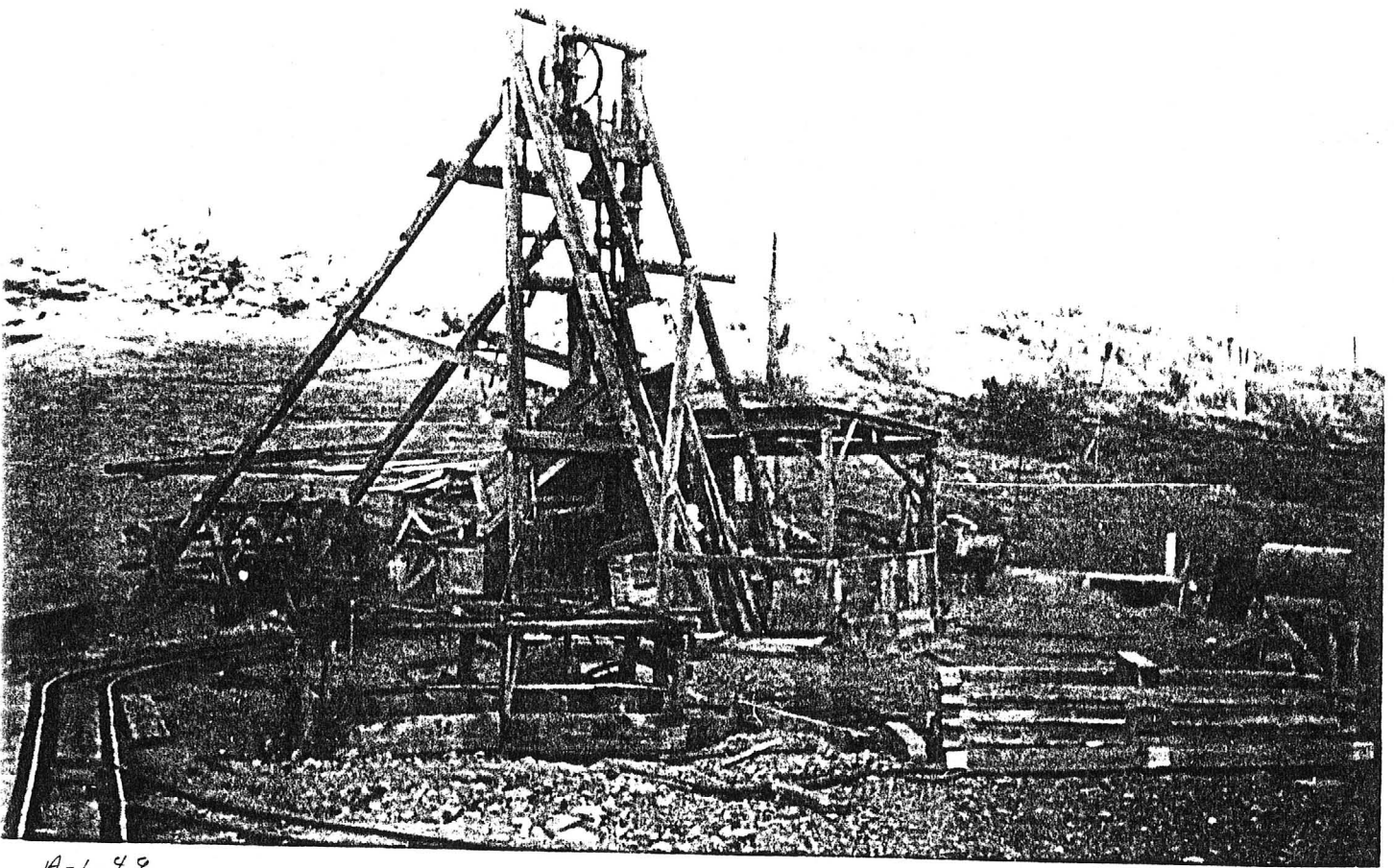
Referring yours fourth regarding Arizona Barite priority application this was for hundred thousand capital installation mill and appurtances. Would like to have you give this all the boost you can before leaving there. W. F. Paine, San Carlos Hotel, would appreciate collect wire regarding same.

Chas. H. Dunning



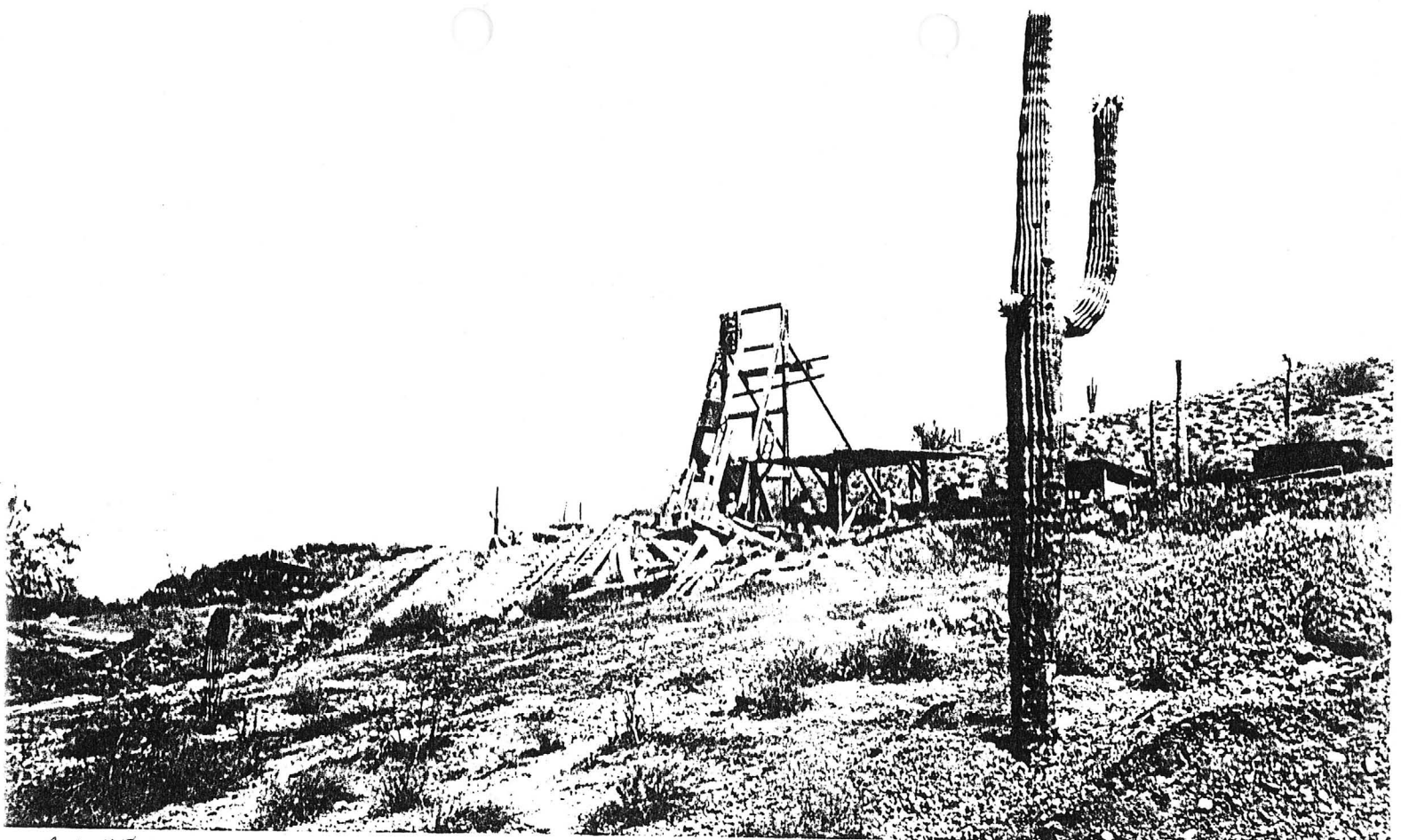
A-1-47

1946



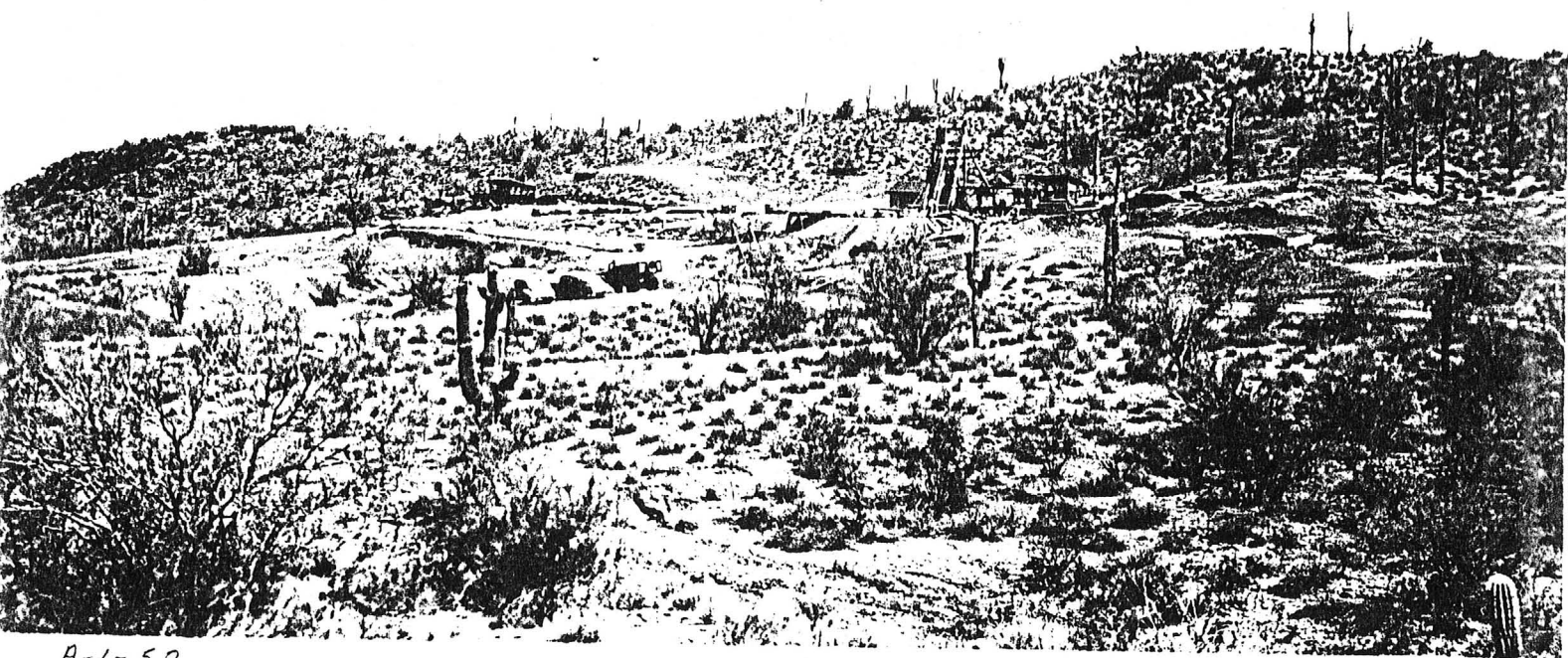
A-1-49

1947



A-1-48

1946



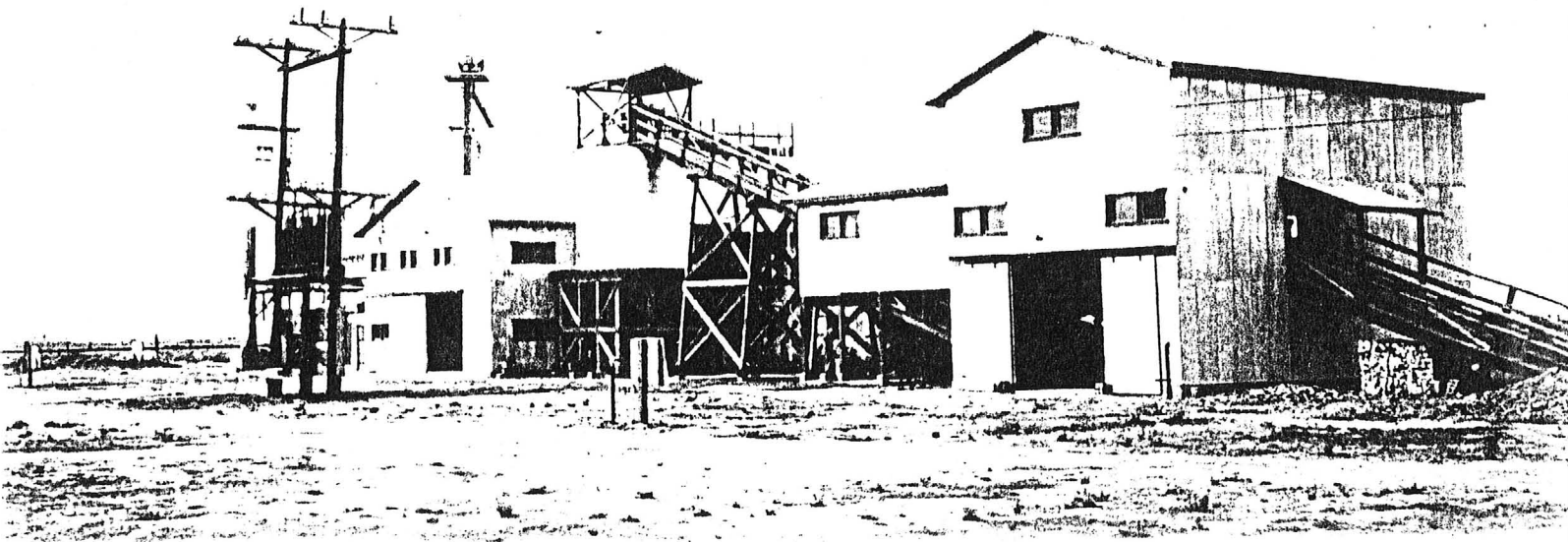
A-1-50

1946



A-1-46

1006













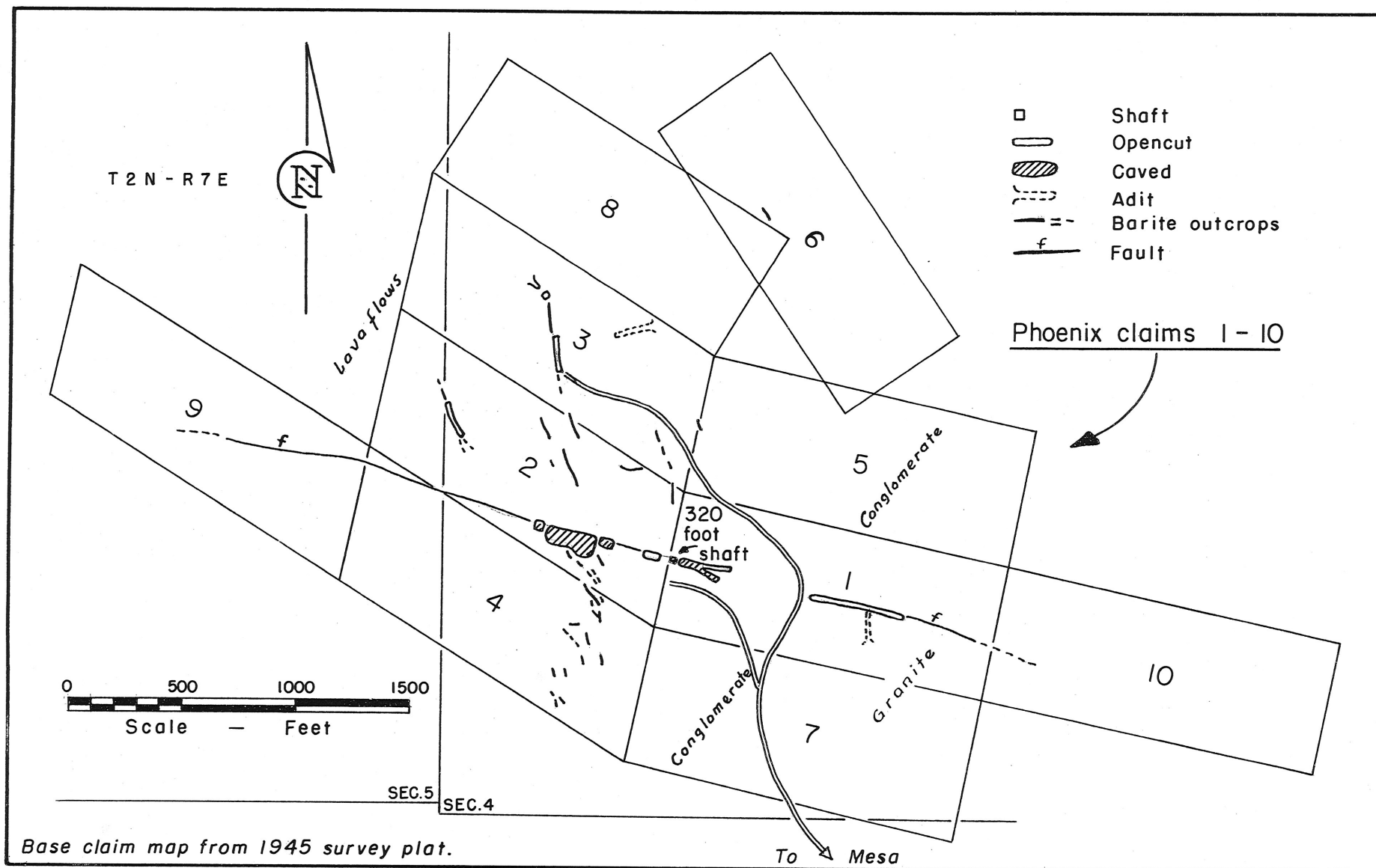


Figure 10- Sketch map of Granite Reef property

ARIZONA BARITE

MARICOPA COUNTY

NJN WR 2/5/82: Visited Arizona Barite, Maricopa County (T2N R7E Sec. 4, SW $\frac{1}{4}$). The shafts and pits have been blasted shut and partially bladed to conform to the contour of Coonbluff. Although strong footwall still stands 10' high in some areas, salt bush and other plants are beginning to reclaim the mined area. Barite float, some iron stained, is still collectable from some of the bladed material. Barite in place is available from cross structures and stringers at the SW. corner of the property and on the north side of Coonbluff.

GEOLOGY:

The Barite deposit is a true vein formation, filling a fault fissure, and in part replacing the wall rock. This is a volcanic conglomerate or explosive breccia, made up of rounded boulders and pebbles of granite and other rocks, cemented in an igneous matrix. Its field relations are those of a volcanic flow. There is nothing to indicate what the thickness of this formation may be, or by what it is underlain, except that a regional exposure of granite approaches to within a short distance of the low range of hills in which the barite veins are found. It is possible, and I believe presumable, that there is a fault separating the granite from the formation in which the veins occur, so that the thickness of that formation may be considerable. Its known thickness extends at least to the water level of the Gila River, more than 100 feet lower than the barite outcrop. It is probable also that at some depth the granite will be found to underlie the mine and limit its extension in depth. But it is unlikely that it will do so within the limits of depth used in calculating probable and possible ore. It lies in a region which has been very greatly broken and destroyed by recent faulting with large displacement, often measured in hundreds and thousands of feet, so that the near approach of the granite on surface does not imply its presence at shallow depth under the mine. None of the contact minerals that usually are found in the rocks just above a granite intrusion were seen on the property so it is unlikely that the granite will be found at any shallow depth.

There is, so far as I know, no yardstick by which we can measure the probably extension in depth of a straight barite vein of this kind. Barite is a frequent gangue mineral associated with quartz in metallic veins, with more or less limited range in depth. Most straight barite veins are small and irregular. What the extreme limit in depth for such a vein may be I do not know. I do not think it probable that it will be more than a few hundred feet in any case. In some instances it is possible to determine a limit in depth beyond which the vein cannot go. That it is not possible in this case.

The deepest opening on it is a shaft 55 feet deep, near the center of the vein. The ore is wider and stronger on the bottom level than on surface or in a crosscut about 30 feet down. I feel warranted in assuming a continuance of the deposit to a depth of 100 feet, and believe that it will probably reach to at least 200 feet in depth. The cost of definitely proving this continuation in depth is so comparatively small, and can be done so quickly, that at wherever there is need to assure a further tonnage of ore it can be easily done.

BARITE VEINS:

I ran a tape and compass survey of the outcrop of the main vein and its branches, finding it to outcrop continuously for a distance of 900 feet, with widths of from 3 feet to 15 feet. The average width for this distance is about 8 feet. At the west end the outcrop is 15 feet wide, the absolute end being covered by the wash beyond which it does not appear at all. From here it has a strike of South 78 degrees East for 613 feet, varying from 8 to 15 feet in width. It has a dip of 70 degrees to the south, with a very strong footwall. The hanging wall is not so well marked, and several stringers about two feet wide branch off at a slight angle from the strike of the main vein. At 540 feet from the west end there is an inclined shaft 55 feet deep, following down to the footwall. In this the vein is narrower than in the open cut pits on either side, being $3\frac{1}{2}$ to 4 feet wide,

but on the bottom level a 15 foot crosscut shows a second body of barite 5 feet or more wide, separated from the footwall streak by about five feet of country rock, so that at least 8 feet of barite could be mined here.

At the east end of this section of the vein there is a west dipping cross fault, with apparently no displacement, along which the barite extends into the hanging wall, giving it locally an appearance of greater width. 20 feet east of the cross fault the vein turns off on a south 38 degrees east strike for 33 feet with a width of about $3\frac{1}{2}$ feet of barite showing in an opencut lengthwise of the vein. It then turns off on about a south 65 degrees east course for 140 feet, for about half of which distance it has a width of from 8 to 12 feet of clean barite. Here a strong hanging wall, with a dip of about 70 degrees south, is exposed in an open cut pit, and the footwall is not exposed. It then turns to a north 80 degrees east course for 90 feet, showing widths of from 3 to 6 feet of barite. Then no barite is seen until a point 150 feet farther on, on a course of N01 87 degrees east, where there is a small stringer of barite showing for a short distance. 200 feet beyond that point the vein again has its true strike of about South 75 degrees east, with a strong wall showing in two open out pits. Then for a distance of 315 feet it averages two to three feet in width of barite. Beyond which point it dwindles down and dies out in about 100 feet.

Taking a random course to the northwest from the west end of the main vein for a distance of 550 feet there is no evidence of the vein. At that point barite float begins to show. 50 feet beyond an open cut strips about four feet of barite, which at the end of the cut, on a north 60 degrees west strike, shows a width of 23 feet of vein in which barite has largely, but not completely replaced the country rock. There is a strong fault wall, having a dip of 60 degrees to the southwest. Not enough work has been done here to show the true size of grade of this outcrop, though it is said that two carloads of barite had been shipped from these cuts by a former owner. It is probable that when finally uncovered it will prove much bigger than it now appears.

About 100 yards south of the west end of the main vein, a little work has exposed a cross stringer, with a flat dip to the west, which shows about two feet of barite. Other similar outcrops were reported to lie on the footwall side of the vein. No account of these is taken in estimating the probable production of the property, yet a considerable tonnage might be won from them.

MINERALIZATION:

The vein carries almost nothing but coarsely crystalline barium sulphate with a little iron. There seems to be no true vein quartz in the deposit. It is very clean in that respect, as is shown by the low silica content of those cars shipped for chemical use. In sections of the deposit, as on the northwest branch vein, there are unreplaced boulders and pebbles of the wall rock, which could be easily handsorted out. This explains the high specific gravity of the ore, as it has none of the low specific gravity vein minerals usually associated with barite, and the iron oxides are almost as heavy or heavier than barium sulphite. (Limonite has a specific gravity of from 3.6 to 4.0 and hematite has a specific gravity of from 4.9 to 5.3; as compared with 4.3 to 4.6 of barite.) So, in a product for oil well mud especially, which is sold on the weight specifications alone, the iron is not a detriment.

ORE RESERVES:

In view of the very limited development to date it is difficult to speak

of ore reserves, yet the showing is so strong in the several pits that have opened in the course of taking out ore, that there is no question of the ability of the mine to produce a considerable quantity of ore. Several thousand tons of ore have been taken without any equipment and a high grade product shipped.

The largest pit is 140 feet long and a solid vein of barite has been mined to an average depth of about 15 feet for a width of from 8 to 12 feet. The ore is solid in the bottom of the pit. 80 feet east of this a second pit 34 feet long has an equal width. A drift on solid ore extends 25 feet from this pit toward the first, and midway between them to an inclined shaft reaches a depth of 55 feet, showing more than 8 feet in width of barite separated by about 5 feet of country rock. Sample No. 50, sent to Houston for analysis was taken across there and a half feet of barite on the footwall at the bottom of this shaft.

90 feet east of Pit No. 2 is Pit No. 3, from which the carload of ore, just shipped to you at Houston, was taken. This is 60 feet long, showing a width of from 8 to 12 feet of barite. The main pit is about 18 feet deep, with short drifts going east and west at either end. Sample No. 48 was cut across the face of the east drift for a width of six feet, from the hanging wall toward the footwall, which lies about 3 feet from the side of the drift. Sample No. 49 was taken across the back of the west drift, about 30 feet from surface, for a width of 7 feet without cutting either wall. At the west end of the pit a shaft goes a little deeper, but this is filled with broken ore. The foreman said that there are about 12 cars broken here.

In the next 90 feet two small pits were started on lesser widths of ore. At the far east and the vein is stripped in two open cuts, in one of which a little underhand stoping has been done on a two foot width of clean barite.

Using a figure of 8 cubic feet of ore to the ton, which is slightly high for a material of such high specific gravity, and bases on the widths of ore opened in the several pits and cuts, and the width of the outcrop, where unopened, it is estimated that in the 900 foot length of the main vein there is a total of 873 tons to the vertical foot, of which 310 tons per vertical foot are considered as assured ore, and 563 tons per vertical foot as probable ore. In the two open cuts at the far east end there are 44 tons to the vertical foot of assured ore and 50 tons per vertical foot of probable ore. In the open cuts at the end of the northwest branch of the vein it is estimated that there are 250 tons to the vertical foot of possible ore.

The deepest work on the vein is 55 feet, but I believe that it is safe to expect the ore to continue at least to a depth of 100 feet, and probably to a depth of 200 feet or more. So in the following table I have assumed a continuation of the assured and probable ore to a depth of 100 feet, and have classed as possible ore that between 100 feet and 200 feet in the main vein and east continuation, and as possible ore that in the northwest branch from surface to the 200 foot level.

	Ore Reserves:		Tons:
	Assured to 100'	Probable to 100'	Possible to 200'
Main Vein	81,000	56,350	87,350
Far East Continuation	4,400	5,000	9,400
North West Branch			50,000
	<u>85,400</u>	<u>61,350</u>	146,750

Deduct, for that mined:	<u>4,400</u>
Assured Ore	81,000
Probable Ore	61,350
Possible Ore	<u>146,750</u>
 TOTAL:	 <u>289,100</u>

RECOMMENDATIONS FOR DEVELOPMENT:

When a market is assured for the output of the mine, it will become necessary and advisable to go ahead with a systematic plan of development, which will at once prove the existence of substantial reserves, and prepare them for cheap mining. This does not call for either expensive equipment, nor expensive dead work. The ore taken out in drifting should more than pay the cost of the work. The ore is soft, hardness 2.5 to 3.5, but firm, and drifts will stand without timber, a light jackhammer will drill a great footage of hole per shift, and the vein will break with a minimum of powder. There is always one strong wall stopping with little timber.

It is recommended that a 15 to 25 H.P. gas hoist, and a small portable compressor be used. A shaft should be sunk to a depth of about 120 feet deep enough that a level therefrom will have a minimum depth of 100 feet. The present 55 foot inclined shaft might be enlarged and continued on down, or preferably, a new one and one half compartment vertical shaft sunk in the hanging wall of the vein at a point midway between the ends of the main vein, and so located as to cut the vein at a depth of 200 feet. This would require only 35 feet of cross cut to the vein on the 100 foot level, and a similar cross cut on the 300 foot level if the work goes that deep, and would permit the complete extraction of the ore, except for a station pillar on the 200 foot level.

As soon as drifting is started, and as long as the vein is as wide or wider than the drift, which should be for at least three fourths of its length it should be possible to break a carload of ore a day, working two shifts a day with a working foreman, who sharpens tools, and five men a shift. A drift 6 ft. x 7 ft. would break 42 cubic feet to the foot of advance, or 210 cubic feet, or 26 tons ore to the five foot round.

Allowing \$6.00 a day for the foreman, \$5.00 for miners and hoist men, and \$4.00 for muckers and top men, two shift drifting would cost only \$1.00 per tons for labor when drifting in full width vein. Another 50 cents per ton would more than cover cost of powder, power, and miscellaneous supplies. Which is cheap mining.

When drifts have been carried far enough either way from the shaft, a sill floor put in the stopping started, the tonnage per drill shift will be very high, and the cost of mining very low. I believe that in the wide part of the vein from 75 to 100 tons of ore per drill shift can be broken, and the total cost for mining, hoisting and sorting, where that may be necessary to keep up the grade, can be kept well below \$1.50 per ton. Provided always, that a sufficient outlet is found to permit steady operations.

While these are matters of more particular interest to Mr. C, I have discussed them here, for they indicate that if a sufficient market can be found to keep the mine busy to capacity, it might well be possible to reduce the costs of the raw material to your mutual benefit.

GRADE OF THE ORE:

The three samples sent to you at Houston will show the average value of the ore without sorting. I do not yet have the results of the test made on them, but believe that they will show a good barium sulphate content and high specific gravity. In any part of the deposit where the ore is mined drops below the desired grade, it can be easily hand sorted to grade, as the chief impurities, other than iron, are a mechanical, rather than a chemical mixture.

I do not doubt Mr. C. can continuously maintain a product of guaranteed minimum specific gravity, or if a market is found where color is not an objection that he can maintain a product with a high percentage of barium sulphate.

CONCLUSION:

Providing that a market can be found for the material I am satisfied that the Christmann barite property offers you a dependable source of raw material sufficient for your probable needs for a period of years.

Faithfully yours,

John Carter Anderson (signed)

Tempe, Arizona

DEPARTMENT OF MINERAL RESOURCES

REPORT TO OPA ON ACTIVE MINING PROJECT

Filing Information

Date 6/3/25
 Name of Mine Arizona Barite
 Owner or Operator W. D. ...
 Address 505 ...
 Mine Location near Street Mt ...

File System.....
 File No.....
 This chart to be used for gallons of gasoline required per month.

PRESENT OPERATIONS: (check X)

Production.....; Development ; Financing.....; Sale of mine.....;
 Experimental (sampling).....; Owner's occasional trip.....;
 Other (specify) Construction of Mill.

PRODUCTION: Past and Future.

Tons

Approx. tons last 3 months
 Approx. present rate per 3 months
 Anticipated rate next 3 months
 If in distant future check (X) here

EQUIPMENT OPERATED:

Type	Quantity or Horse Power	Miles or Hours Per Month	Gallons Required Per Month
Personal Cars
Light or Service Trucks
Ore Hauling Trucks
Compressors	<u>Ingersoll 32HP 800</u>	<u>621</u>
Other Mine or Mill Eqpt.

PRODUCT PRODUCED OR CONTEMPLATED: Name metals or minerals.

Barite

REMARKS:

Barite is needed in the ... industry and this property will be one of the large producers

ARIZONA DEPARTMENT OF MINERAL RESOURCES

By ...

JAMES E. MURRAY, MONT., CHAIRMAN
ALLEN J. ELLENDER, LA.
JAMES M. MEAD, N. Y.
TOM STEWART, TENN.
CLAUDE PEPPER, FLA.
JAMES G. SCRUGHAM, NEV.
BRIEN MCMAHON, CONN.

ARTHUR CAPPER, KANS.
GEORGE A. WILSON, IOWA
KENNETH S. WHERRY, NEBR.
C. DOUGLASS BUCK, DEL.
THOMAS C. HART, CONN.

DEWEY ANDERSON, EXECUTIVE SECRETARY

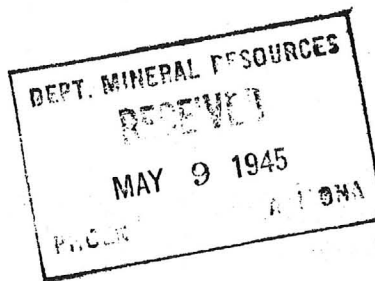
United States Senate

Special Committee to Study Problems of
American Small Business

May 7, 1945

AIR MAIL

Mr. E. H. Robertson
Executive Vice President
Arizona Barite Company
509 Security Bldg.
Phoenix, Arizona



Dear Mr. Robertson:

On receiving your letter of May 5 with exhibits and project application, the matter was discussed again with the WFB Mining Division.

The WFB Appeals Board receives and decides upon all appeals, which generally entails a long delay. Inasmuch as the Production and Materials Divisions of the Petroleum Administration for War and the Lead-Zinc Division, WFB, have disapproved your application on the grounds that an adequate supply of barite exists, which is a matter of record, the Mining Division feels certain the Appeals Board would deny your appeal. This in turn probably would tie the hands of your local WFB board. Therefore, it is believed inadvisable to appeal your case.

However, as I informed you during our recent conversation, your local WFB office may authorize and grant priorities for projects under \$100,000 without consulting the Washington office.

I have been informed that initially your local WFB representative (Mr. Louis A. Meyers, Phoenix, Arizona) was favorably inclined toward your application. Later, however, Mr. George A. MacDonald, Production Section, Lead-Zinc Division, WFB, discussed your case with Mr. Meyers by phone and may have changed his point of view. With this in mind, you may more effectively discuss with Mr. Meyers the suggestions presented below, which also represent off-the-record advice received from the WFB Mining Division.

A new project application containing the minimum of critical building materials, machinery, and equipment requiring priorities, probably would be approved by the local district or regional WFB office. It is believed that most items of machinery and equipment may be obtained in the used machinery market; outside gypsum board may be used for sheathing, etc.

Mr. E. H. Robertson

May 7, 1945

In presenting your application each type of construction material together with quantities, specifications (where applicable), and dollar value should be indicated separately. The rating required for each item of machinery and equipment also should be shown for a blanket priority is not granted for this type of project. All used equipment not requiring priorities should be itemized in a separate group and as much as possible should be utilized.

When the project is under way the WFB Mining Division will be glad to help you locate used equipment difficult to obtain or extend priorities where necessary.

However, should you still prefer to appeal the case, I shall proceed on receiving further instructions although I feel sure it would prejudice your project.

Sincerely yours,

Bill Broadgate

W. C. Broadgate
Technical Consultant

cc: Senator Carl Hayden

Charles H. Dunning
304 Home Builders Bldg.
Phoenix, Ariz.

Chas. F. Willis
528 Title Trust Bldg.
Phoenix, Ariz.

Handwritten initials

5 February 1942

Mr. D. B. Morgan,
John H. Page & Company,
P. O. Box 3706,
Phoenix, Arizona.

My dear Mr. Morgan:

Mr. F. F. Schalmo of the Office of Production Management, Phoenix, Arizona, has referred your letter of December 26 to this department with the request that we obtain all information possible on the Chrismon barite property.

I am enclosing herewith a blank mine owner's report, which I should suggest that you have filled out in detail and returned to us so that information may be available concerning this property. I shall appreciate it if you can give me the quantity available, facilities for production, etc.

Thanking you in advance, and with best wishes, I am

Yours very truly,

Charles F. Willis
Chairman, Board of Governors

CFW-jrf
encl.

April 2, 1945

MEMORANDUM

TO: W. C. Broadgate

FROM: Ehas. H. Dunning

The Arizona Barite Company has purchased the Chrisman barite property near Stewart Mountain Dam and is planning immediate production.

They have letters of necessity from several oil firms and they have applied for certain priorities to the W.P.B.

Will you please follow through and expedite all possible.

CHD:LP

P.S. The local W.P.B. agent, [unclear]

see also
Barite Co.

March 19, 1945

MEMORANDUM

TO: Grace M. Sparkes

FROM: Chas. H. Dunning

The Houston Oil Field Material Company of Houston, Texas, through their Vice-president and representative, Mr. E. H. Robertson, have taken over the Chrisman Barite Mine near Stewart Mountain Dam from Mrs. Chrisman, the owner.

It is reported that the consideration was large and was all cash.

Barite has many uses but the principal demand at present is to make a heavy mud through which oil well drilling operations are carried on. The heavy mud holds down the pressure and prevents the gas from blowing out.

William Paine of Prescott and Phoenix, well known in Yavapai County as a diamond drill contractor, was instrumental in negotiating the deal and will be the active manager of the property.

The Chrisman property has long been known as the most apparant barite deposit in Arizona and will be the first important producer, but the demand for barite is increasing and there may well be other important deposits in the state.

Mr. Robertson has stated that the Arizona Department of Mineral Resources also rendered valuable aid in bringing about this important deal and prospective industry.

CED:LP

March 23, 1942

Mr. F. O. Christmann
1040 N. 1st Avenue
Tucson, Arizona

Dear Mr. Christmann:

I am enclosing herewith a copy of mine owner's report filed with this department covering the PHOENIX 1, 2, 3 & 4 in Maricopa County.

I shall be glad to submit a copy of this report to anyone making inquiry for a property such as yours.

Assuring you of my desire to be helpful, and with best wishes, I am

Yours very truly,

J. S. Coupal

JSC:LP
Enc.

Card

25 February 1942

✓
Mrs. Walter F. Christmann,
P. O. Box 1772,
Tucson, Arizona.

My dear Mrs. Christmann:

I am enclosing herewith a blank mine owner's report, which I should appreciate your filling out in detail and returning to this office so that information may be available on your barite property.

We are having a number of inquiries for possible sources of barite, and if we have the information on your property available, we will be able to refer them to you for additional information.

Assuring you of my desire to be helpful, and trusting that you will return the report with detailed information at an early date, I am

Yours very truly,

Charles F. Willis
Chairman, Board of Governors

CFW-jrf
encl.

JAMES E. MURRAY, MONT., CHAIRMAN
ALLEN J. ELLENDER, LA.
JAMES M. MEAD, N. Y.
TOM STEWART, TENN.
CLAUDE PEPPER, FLA.
JAMES G. SCRUGHAM, NEV.
BRIEN MCMAHON, CONN.

ARTHUR CAPPER, K.
GEORGE A. WILSON, IOWA
KENNETH S. WHERRY, NEBR.
C. DOUGLASS BUCK, DEL.
THOMAS C. HART, CONN.

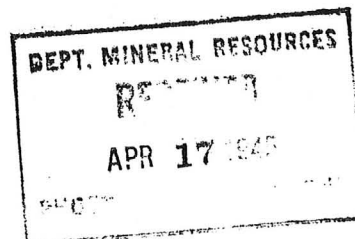
DEWEY ANDERSON, EXECUTIVE SECRETARY

W.C. Broadgate

United States Senate

Special Committee to Study Problems of
American Small Business

April 13, 1945



Mr. E. H. Robertson
Executive Vice President
Arizona Barite Company
P. O. Box 2589
Houston 1, Texas

Dear Mr. Robertson:

Relative to your request for priorities for operating the Arizona Barite Company, I discovered in checking with the War Production Board that the application has arrived and that it is of necessity a project application rather than a request for individual pieces of equipment. A project application, after being approved by the Mining Division's Nonmetallies Section, must go to the Building Bureau for approval and the highest rating which can be granted by that Bureau is AA-3. However, there is no doubt but what this rating will be forthcoming.

I wish to advise you of the proper procedure to follow when you get your rating. You place orders for all of your equipment under the AA-3 and ask the supplier to inform you as to firm delivery dates. If the delivery dates on any items are out of line with your schedules you will apply to the WFB for special and higher ratings on these particular items so as to get your delivery dates to conform when you find out from the supplier what rating he needs on the particular item in order to match deliveries with the other items.

Although we do not have a tabulation of the material you require, I question very much the statement in your letter that a rating lower than AA-1 will delay you from three to five months under the procedure outlined above. At any rate, there is no other course than to take the AA-3 rating. We will try to get this application processed as rapidly as possible, but I am sorry to inform you that the Non-metallies Section of the Mining Division has lost a number of its analysts and is seriously understaffed at the moment. In fact, one man is in the position of having to service several thousand mines.

Sincerely yours,

W. C. Broadgate

W. C. Broadgate
Technical Consultant

cc: C. H. Dunning, Director ✓
Ariz. Department of Mineral Resources

Washington, D.C.

May 6, 1945

TO: C.H.DUNNING
FROM: W.C.BROADGATE
ABOUT: ARIZONA BARITE PRIORITIES.

I have your memo on this.... it is not so easy. It is not some little fellow in the WPB named Falconer... he merely transmitted the opinion. The agency against the deal is the Petroleum Administrator for War whose agency states that there is plenty of Barite, that it is transportation troubles that have caused the apparent shortage... that this situation will be cleared up long before Arizona Barite can be put into operation.

Of course, I was furnished with little data with which to plead the case. However, I feel that PAW will not change, and if not, WPB cannot approve the deal as set up.

The next best thing is to find a way around, and this is by handling the matter with used equipment, so it will not have to clear the various bureaus.

I talked to Robertson on the phone, and am writing him from the SSBA in detail how to proceed. In the meantime he is sending me more data to see if it can be appealed.

The "letters of necessity" from the oil outfits were not very strong or persuasive.

May 3, 1945

MEMORANDUM

TO: W. C. Broadgate

FROM: Chas. H. Dunning

Mr. Robertson of the new Arizona Barite Company came in this morning with a letter from the W.P.B. of which copy is enclosed.

This is an exceedingly bad and urgent situation. This concern is a subsidiary of the Houston Oil Field Material Company, a very large supply concern in Houston, and the reason they came out here and bought this barite deposit is because they couldn't get sufficient and satisfactory supplies from anywhere else. It seems to me that they are in a much better position to know whether there is a shortage of barite than Mr. Falconer, whose information is probably derived from some ancient statistics.

Mr. Robertson suggested that we call you on the phone but I thought you should have the information first. These people have come out here and paid a large amount of money for this property and are ready and anxious to get started. All the equipment and material they need is available and none of it is critical. Various contractors such as Western Knapp are ready and anxious to supply everything and do the job.

This is an exceedingly important thing, Bill, and I hope that you can straighten it out quickly. Mr. Ed Robertson would like to have you call him collect at the San Carlos Hotel as soon as you get this and decide what should be done, which please do and give the situation your own highest priority.

CHD:LP
Enc.

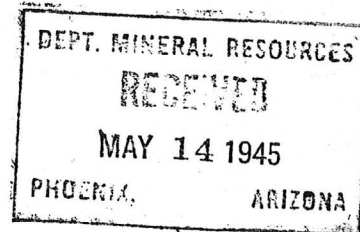
CC: Mr. Ed Robertson

Washington, D.C.

May 11, 1945

PAW

TO: C.H.DUNNING
FROM: W.C.BROADGATE
ABOUT: Arizona Barite Company priorities



Robertson has wired me twice to file his appeal, against my express objections.

I proposed an alternate, which we had been working out here to try and get his project through against Washington's basis objections.

Upon receiving the second wire I have filed as he asked.

I accept no responsibility for the outcome whatever. It is barely possible that through some miracle he may get by, but I can't see it in the cards, the way he and Meyers are handling the matter. I wish him the very best of luck.

I had wired him that I was taking the matter up with a key man who would be back in Washington Monday, but apparently that was not satisfactory.

I believe that if Robertson and Meyers were to work the deal out in the field as I have suggested there might be a chance. I have written Western-Knapp, his supplier, about the whole matter, on the theory that, as they have handled many war projects, they may be able to explain the situation and procedure to him as I seem to have been unable to do.

His application, even, was not filed in such shape as could be processed here, even if PAW were to approve.

This last filing will probably close the door for recasting the deal and I would prefer to let Robertson and Meyers, with Western-Knapp, who have very good WPB contacts, unravel the mischief themselves.

June 27, 1945

Office of Defense Transportation
Security Building
Phoenix, Arizona

Gentlemen:

The Arizona Barite Company is making application to you for the purchase of new trucks. This department is familiar with the operations and plans of this company and believes that they are important to the war effort, and that it will be economically necessary for them to have their own trucks for their ore haul.

Their mine is situated near Stewart Mountain Dam and their mill site is 22 miles from the mine at the railroad near Mesa. They will have a mill capacity of 100 tons per day which will have to be hauled from mine to mill.

Barite is extensively used in oil well work and is in short supply. It is essential for war production. Probably no existing truckers in this vicinity could take on this extra load and render satisfactory service.

This concern is experienced and well financed and well managed. Their product is needed and we recommend that their application be approved.

Yours very truly,

Chas. H. Dunning
Director

CHD:LP

June 10, 1946

Mr. W. F. Paine
Box 926
Mesa, Arizona

Dear Mr. Paine:

We are enclosing pictures of
the Arizona Barite property taken by
Mr. Roger Manning, Field Engineer.

Yours very truly,

Secretary

January 11, 1946

Mr. W. F. Paine
c/o Arizona Barite Company
Mesa, Arizona

Dear Bill:

Per our recent conversation this department believes that a very attractive opportunity exists here in Arizona for an exploration company properly financed and equipped to explore for non-cropping mineral bodies by means of geophysics and subsequent diamond drilling.

A study of geological maps of Arizona shows that 97% of the area of the state is covered with volcanic flows or sedimentary formations that occurred later than the mineral bearing formations, thus hiding them. There is no reason why much of this 97% might not be as prolific of mineral as the 3% exposed, and there are many locations where geological conditions are good, and the overburden within the range of modern geophysical instruments. There is also opportunity for much improvement in the science of mining geophysics, and technical research along such lines could well be within the scope of such an exploration company.

I want to assure you that this department will gladly give full cooperation to such an organization both in giving access to all data and records we have in our files, or anything wherein our organization and knowledge of the state can be of assistance.

Yours very truly,

Chas. H. Dunning
Director

CHD:LF

DEPARTMENT OF MINERAL RESOURCES
 State of Arizona
 Mine Owner's Report

Date: March 6, 1942.

1. Mine: PHOENIX 1, 2, 3 & 4
2. Location: 21 miles from Mesa, Arizona.
3. Mining District & County: Maricopa County.
4. Former Name:
5. Owner: F. O. Christmann
6. Address (Owner): 1040 N. 1st Ave., Tucson, Arizona.
7. Operator:
8. Address (Operator):
9. President, Owning Co:
- 9A. President, Operating Co:
10. Gen. Mgr:
14. Principal Minerals: Barite.
11. Mine Supt:
15. Production Rate:
12. Mill Supt:
16. Mill - Type & Cap:
13. Men Employed: Watchman.
17. Power - Amt. & Type: One mile from property - Power line.
18. Operations - Present: None.
19. Operations - Planned: Will renew operations upon receiving order from reliable company.
20. Number Claims; Title, etc: Four claims.
21. Description - Topography & Geography: Low hills.
22. Mine Workings - Amt. & Condition: Shaft about 52 feet deep.

(over)

DEPARTMENT OF MINERAL RESOURCES
STATE OF ARIZONA
MINE OWNER'S REPORT

DEPT. OF MINERAL RESOURCES
MAR 12 1942
TOLSON

MP 131

Date 3/6/42

1. Mine *Phoenix - 1-2-3-4*
2. Location *21 Miles from Mesa*
3. Mining District & County *Phoenix Co.*
4. Former name
5. Owner *F.O. Christman*
6. Address (Owner) *1040 N. 1st Ave
Tucson - Arizona*
7. Operator
8. Address (Operator) *P.O. Box 1772*
9. President, Owning Co.
- 9A. President, Operating Co.
10. Gen. Mgr.
11. Mine Supt.
12. Mill Supt.
13. Men Employed *Watchman*
14. Principal Minerals *Barite*
15. Production Rate
16. Mill: Type & Cap.
17. Power: Amt. & Type
*One Mile from property
Power line*
18. Operations: Present *None*
19. Operations: Planned *Will renew operations upon receiving
order from reliable company -*
20. Number Claims, Title, etc. *Four*
21. Description: Topography & Geography *low hills*
22. Mine Workings: Amt. & Condition
shaft about 52 feet deep -

August 22, 1946

Mr. W. F. Paine
Arizona Barite Company
Box 926
Mesa, Arizona
CHD:TB

Dear Mr. Paine:

Per your request I have recently made two visits to the Arizona Barite Mine and have formed certain definite conclusions.

The footwall of your vein seems to be true and smooth as exposed in the present workings, but the hanging wall is very ragged and uneven. Tongues of ore extend out into the hanging wall zone, and tongues of waste extend into the ore from the hanging wall side. To keep your ore sufficiently clean for market without concentration you must necessarily confine your mining to a comparatively narrow zone along the footwall. If you could allow a reasonable amount of dilution of the ore, your mining width could be greatly extended, your ultimate amount of ore greatly increased, and your mining and development costs lowered.

As a typical example I noted one place where there was four or five feet of clean ore on the footwall, but 12 to 15 feet of mixed ore on the hanging wall side of that. If that mixed zone is left for a future operation, it would be difficult and expensive to mine - perhaps never worth while. It should all be mined at once, but if so, it would no doubt bring your grade down below the critical point for marketing without concentration.

I understand that you have worked out successful metallurgy on concentrating this lower grade ore to a high grade product by flotation, and it would seem advisable to proceed with such a plan at once. The additional operating cost should be very small and probably not as much as you now have in attempting a little hand sorting.

Weighing the various factors for and against the immediate installation of flotation we have:

For:

Lowering of mining and development costs.

Adding to "reserves" or the life of the mine.

19 December 1941

Mr. D. B. Morgan,
c/o John H. Page & Co.,
Luhrs Bldg.,
Phoenix, Arizona.

My dear Mr. Morgan:

The Phoenix office of O. P. M., Mr. F. F. Schalmo
in charge, has advised us that they are seeking
40,000 tons of barium carbonate.

We have given them your name as a possible source,
this being based upon records in our office that you
are handling the barite property of Freida Chrismon.

We do not seem to have any description of this
property, and therefore were unable to give them
as much information as we would like to have given.

We are enclosing herewith a blank mine owners report,
which kindly have filled out in detail and returned
to this office as it will be very helpful to have a
description of this property for future emergencies.

Yours very truly,

Charles F. Willis,
Chairman, Board of Governors

CFW-jrf
encl.

John H. Page & Company

LAND ATTORNEYS

PUBLIC LANDS—STATE LANDS—SCRIP

SUITE 516 LUHRS BUILDING
P. O. BOX 3706
TELEPHONE 3-6216

Phoenix, Arizona

12/27/41
JOHN H. PAGE
K. K. KOONTZ
D. B. MORGAN

December 26, 1941

Division of Contract Distribution
Office of Production Management
Security Building, Room 406,
Phoenix, Arizona.

Attention: Mr. Fred F. Schalmo, Manager.

Gentlemen:

With reference to your letter of the 19th inst. regarding the desire of the Picatinny Arsenal at Picatinny, New Jersey, for Barium Carbonate, granular, with apparent density min. of 1.50, in 100 pound bags:

We called this matter to the attention of the owner of barite property located east of Mesa and we are just now in receipt of word from the said owner advising that

"Regret to inform you that we have no ground Barite to offer, and am positive that you will find none this side of Los Angeles, California, as it requires a very expensive grinding plant to put it into this form."

Very truly yours,

JOHN H. PAGE & COMPANY

BY



DBM:M

John H. Page & Company

LAND ATTORNEYS

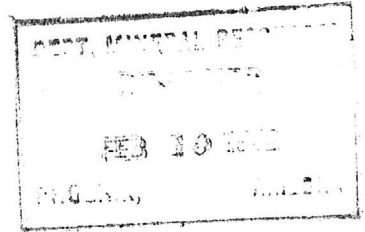
PUBLIC LANDS—STATE LANDS—SCRIP

SUITE 516 LUHRS BUILDING
P. O. BOX 3706
TELEPHONE 3-6216

Phoenix, Arizona

JOHN H. PAGE
K. K. KOONTZ
D. B. MORGAN

February 7, 1942.



Mr. Charles F. Willis,
Chairman, Board of Governors,
Department of Mineral Resources,
518 Title & Trust Building,
Phoenix, Arizona.

Dear Mr. Willis:

I am in receipt of your favor of the 5th inst. stating that Mr. Schalmo of the Office of Production Management, is interested in securing full and complete information concerning the Christmann Barite property east of Mesa. With your letter you enclosed a blank Mine Owner's Report and suggested that information therein called for be supplied.

You are informed that this property is owned by Mrs. Walter F. Christmann whose address is P. O. Box 1772, Tucson, Arizona. It is suggested that you take the matter up with her for she is handling this property direct.

Your Mine Owner's Report is returned herewith.

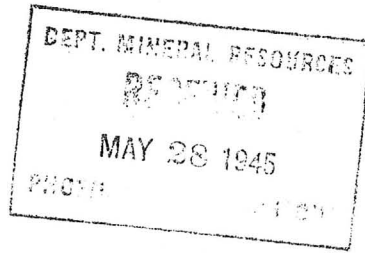
A copy of this letter is being forwarded to Mrs. Christmann for her information.

Very truly yours,

JOHN H. PAGE & COMPANY

BY

DBM:J



May 25, 1945

Dear Chuck -

Much to my astonishment I believe we have talked PAW and WPB project section into giving a blanket AA₃ to Arizona Bante.

This will be an overall project rating and it is not what Robertson wants. But I did not expect to get him anything, the way they went at it.

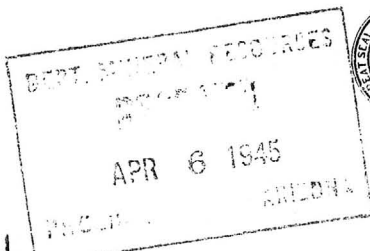
He will, if he gets the rating, have to follow my original instructions and fill in anything he cannot get in time under the rating, either with 2nd hand stuff, or by requesting special ratings for the missing items to bring them into the construction schedule at the right time. He had better use all the 2nd hand he readily can.

Bill Brodgett

BOARD OF GOVERNORS:
CHARLES F. WILLIS, PHOENIX
CHAIRMAN
DR. N. H. MORRISON, PHOENIX
VICE-CHAIRMAN
SHELTON G. DOWELL, DOUGLAS
L. V. ROOT, KINGMAN
LOYDE C. EDMONSON, GLOBE
W. J. GRAHAM, SECRETARY

DEPARTMENT OF MINERAL RESOURCES
STATE OF ARIZONA
413 HOME BUILDERS BLDG.
PHOENIX, ARIZONA

CM
J. S. COUPAL, PHOENIX
DIRECTOR
W. C. BROADGATE, PHOENIX
ASSISTANT DIRECTOR
W. J. GRAHAM, PHOENIX
ASSISTANT TO THE DIRECTOR
FIELD OFFICES AT
GLOBE - KINGMAN
PRESCOTT - TUCSON



4/4/45

REPLY TO

Dear Chuck

Yours of the 2nd re Arizona Bante contains no information as to what is required or the urgency which may be involved.

There are scores of channels for priorities, depending on what is wanted.

What are the priorities desired?

If the local WPB sent them in the 2nd they will not hit WPB for some days, due to slowness of government mail and other factors.

It will be very helpful if you will give full details in such cases, including such dates of filing, transmission, etc as you know, and what is being asked for.

If I am told the reason for urgency, with supporting information it helps in getting one application considered before another, which may seem to WPB to be equally urgent.

Bill

UNITED STATES DEPARTMENT OF AGRICULTURE
FOREST SERVICE
Region 3
517 Gold Ave., SW
Albuquerque, New Mexico 87101

2810

June 30, 1970

C. T. Corporation System
14 North 18th Avenue
Phoenix, Arizona 85007



Gentlemen:

We are concerned about a hazard to public safety on the Tonto National Forest in which your company might possess an ownership interest, and some degree of responsibility.

The Phoenix group of 10 unpatented lode mining claims located in sections 4 and 5, T. 2 N., R. 7 E., Maricopa County, Arizona, is the site of the old Granite Reef mine also known as the Arizona Barite mine, which has been inactive for about 15 years.

Two deep shafts, irregular steep sided pits and open stopes, up to 80 feet wide, and underground workings concealed by shallow bridges of surface soil, extending 2,600 feet along the vein mark the site of a mine that produced 312,000 tons of barite ore over a period of 24 years. These mine workings present a particularly dangerous hazard because they remain unguarded in generally flat, easily accessible terrain, are within a half mile of the Bush Highway, are in a high use recreation area, and are near the largest population center in the state.

The Mining Code of the State of Arizona, revised July 1963, states in Section 21-312, that all abandoned shafts, prospect holes or other excavations endangering life or safety shall be securely covered, fenced, or otherwise protected and warning signs posted.

We seek the cooperation of mine owners and the State of Arizona in support of this regulation on all National Forest lands within the State. The Granite Reef mine constitutes a highly dangerous mantrap, and must be made safe as soon as possible.

The first step in the program of correction requires identity of ownership. A search of the public records indicates that in 1963 the Paramount Warrior Corporation acquired the assets of Macco


2.

Corporation, owner of the mining claims, and that your organization is statutory agent for Paramount Warrior.

Please confirm if Paramount Warrior Corporation is present owner of the Phoenix Nos. 1 to 10 lode mining claims and the Granite Reef mine. If ownership passed from the Corporation, we would like to know by what instrument or other means title was conveyed.

As indicated below, we are sending information copies of this letter to several organizations which have an interest in mining and the public welfare in Arizona.

Sincerely,

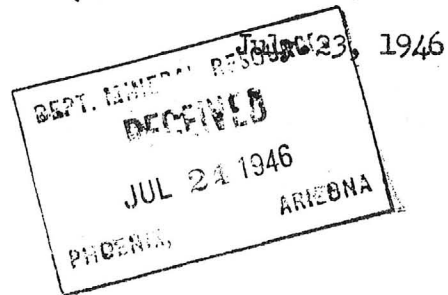

JOHN W. ROEN
Assistant Regional Forester
Recreation and Lands

cc:

Arizona Small Business Association
Arizona Multiple Use Association
Edward H. Poplow, Jr., Arizona Mining Association

ARIZONA BARITE COMPANY

P. O. Box 926, Mesa, Arizona



Mr. Chas. H. Dunning
Arizona Board of Mineral Resources
304 Home Builders Building
Phoenix, Arizona

Dear Charles:

The sample of Bentonite you gave me is not the swelling type, and we will therefore be unable to use it.

I am enclosing a kodak picture of the mill, which you may use to the best advantage.

Yours very truly,

Arizona Barite Company

Wm. F. Paine

Production Manager

This was Alcott sample

December 19, 1941

Mr. D. B. Morgan
c/o John Page & Co.,
Luhrs Bldg.,
Phoenix, Arizona

Dear Sir:

This office today received an inquiry from the Picatinny Arsenal at Picatinny, New Jersey, for Barium Carbonate, granular, with apparent density min. of 1.50, in 100 pound bags. They are desirous of obtaining 10,000 pounds of this material.

We have contacted the Arizona Department of Mineral Resources and through the kind cooperation of Mr. C. F. Willis and Mrs. Jess Fickas, received your name and address as having or knowing of a deposit of Barite or Barium.

Would greatly appreciate any information you might have relative to Barium Carbonate.

Thanking you in advance,

Yours very sincerely,

OFFICE OF PRODUCTION MANAGEMENT
DIVISION OF CONTRACT DISTRIBUTION

By _____

Fred F. Schalmo - Manager

FPS:RL

DEPARTMENT OF MINERAL RESOURCES

REPORT TO OPA ON ACTIVE MINING PROJECT

Date: May 16 1945
 Name of Mine: Phoenix Mine 1 to 5 W.M.F. Payne
 Owner or Operator: Arizona Barite Co.
 Address: 5070 Eastern Hotel Phoenix Ariz
 Mine Location: Mine Granite Reef, Maricopa Co. Grindmill is 2 miles south of Mesa, Ariz.

Filing Information

File System.....
 File No.....
 This chart to be used for gallons of gasoline required per month.

PRESENT OPERATIONS: (check X)

Production.....; Development ; Financing.....; Sale of mine.....;
 Experimental (sampling) ; Owner's occasional trip ;
 Other (specify).....

PRODUCTION: Past and Future.

Tons

Approx. tons last 3 months

Approx. present rate per 3 months

Anticipated rate next 3 months

If in distant future check (X) here

new operation
preparing
1500

EQUIPMENT OPERATED:

Type	Quantity or Horse Power	Miles or Hours Per Month	Gallons Required Per Month
Personal Cars	<u>60</u>	<u>2400</u>	<u>160</u>
Light or Service Trucks			
Ore Hauling Trucks			
Compressors			
Other Mine or Mill Eqpt.		<u>Recommended</u>	<u>480 Gal. for 3 months.</u>

PRODUCT PRODUCED OR CONTEMPLATED: Name metals or minerals.

Barite

REMARKS:

will dry grind & sack for shipment

ARIZONA DEPARTMENT OF MINERAL RESOURCES

By A. MacFarlane

DEPARTMENT OF MINERAL RESOURCES

REPORT TO OPA ON ACTIVE MINING PROJECT

Date 4/13/45
 Name of Mine Chusson Barite
 Owner or Operator Arizona Barite Co.
 Address 90 W. 1st Ave. San Luis Potosi, Mex.
 Mine Location Near Stewart M. Dam.

Filing Information

File System.....
 File No.....
 This chart to be used for gallons of gasoline required per month.

PRESENT OPERATIONS: (check X)

Production ; Development ; Financing.....; Sale of mine.....;
 Experimental (sampling).....; Owner's occasional trip.....;
 Other (specify).....

PRODUCTION: Past and Future.

Tons

Approx. tons last 3 months
 Approx. present rate per 3 months
 Anticipated rate next 3 months A new producing operation
 If in distant future check (X) here

EQUIPMENT OPERATED:

Type	Quantity or Horse Power	Miles or Hours Per Month	Gallons Required Per Month
Personal Cars	1	2250	160
Light or Service Trucks
Ore Hauling Trucks
Compressors
Other Mine or Mill Eqpt.

PRODUCT PRODUCED OR CONTEMPLATED: Name metals or minerals.

Barite.

REMARKS:

Barite is essential to oil production and therefore necessary for the war effort.
This is the principal source of barite in Arizona
Application Recommended.

ARIZONA DEPARTMENT OF MINERAL RESOURCES

By Chas. T. Manning

BARITE *Properties*

Occurrences

Location

Owner & Operator

<u>Occurrences</u>	<u>Location</u>	<u>Owner & Operator</u>
B & H #6	Webb Dist., Maricopa Co. T 2 S, R 6 W	A.C. Bourbonnais 44 Corona Ave., Phoenix
Bagdad	Eureka Dist., Yavapai Co.	Bagdad Copper Corp., Bagdad
Barium 1,2,3	Signal Dist., Mohave Co. Approx. Sec. 32, T. 12 N., R. 11 W.	S.B. Boner, J.W. Markham, Seligman (1942)
Barium 1-8	Clark Dist., Graham Co. (near Klondyke) Approx. T 8 S, R. 21 E	J.D. Mathews, <i>Shaw</i>
Barium King *	S 19, T 4 S, R 20 E, S 24, T 4 S, R 19 E, Graham Co.	Urbane House et al, Globe
Baronite	Green Valley Dist., Gila Co. S 15, T 10 N, R 11 E	Clifford L. Martin W. H. Farrell, Payson
Black Mountain	Bouse Dist., Yuma Co. S 34, T 8 N, R 17 W	J.C. Townsend, Bouse
Black Stud No. 6	Plomosa Dist., Yuma Co. S 6, T 6 N, R 17 W	James F. Hicks, Bouse
Bogan	Green Valley Dist., Gila Co.	Harold R. Bogan Canalbank Road, Scottsdale
Bradshir	N of Patagonia, Red Rock Dist., Santa Cruz Co.	John Bradshir P.O. Box 816, Patagonia
Burro Barite Group	Plomosa Dist., Yuma Co. Secs. 29-31, T 6 N, R 17 W & Sec. 20, T. 7 N., R. 17 W	James F. Hicks, Bouse
Castle Dome	Miami Dist., Gila Co.	Miami Copper Co., Box 100, Miami
Castle Dome	Castle Dome Dist., Yuma Co.	John S. Mahood et al, Yuma
Coronado Group	Secs. 28-29, T 4 S, R 19 E, Graham Co.	Gilbert Maxwell, Agent Coronado Dev. Co., Farm- ington, N.M.
French Creek	west flank of Silver Mountain, Yavapai Co., S 29, T 9 N, R 1 W	<i>apparently part of American</i>
Gilmore Spring Prospect	Green Valley Dist., Gila Co. S 4, T 9 N, R 10 E	<i>unknown</i>
*Barium Deposit	Osborne Dist., Maricopa Co. Approx. Sec. 33, T. 3 N., R. 7 W.	David H. Biles, 225 Cortez St., Prescott

Gisela (Spook)	Green Valley Dist., Gila Co. S 7, T 9 N, R 11 E	E. G. Sorensen & <i>Gisela</i> M. E. Flack
Gonzales Pass	Mineral Hill Dist., Pinal Co. Secs. 16-17, T 2 S, R 11 E	J. W. Barnett, Hayden
Graham	Clark Dist., Graham Co. S 20, T 8 S, R 22 E	Elton Kidd, <i>Indoor City</i> Clondyke
Granite Reef (Arizona Barite)	Maricopa Co., Goldfields Dist. S 4-5, T 2 N, R 7 E	William F. Paine, 5720 E. Indian School Road, Phoenix
Grey Fox	Green Valley Dist., Gila Co. S 6, T 9 N, R 10 E	Earl Russell, Payson
Green Valley	Green Valley Dist., Gila Co. S 1, T 9 N, R 9 E	William R. Dudley, Payson
Grimes Claims	Spring Creek Dist., Gila Co. S 33, T 9 N, R 11 E	Jack Grimes, Tonto Basin
Ground Hog *	Tombstone Dist., Cochise Co. S 22, T 20 S, R 22 E	Wallace S. Eavenson, <i>1917</i> Tombstone
Happy Days 1, 3 & 4	Bouse Dist., Yuma Co. S 7, T 7 N, R 16 W, S 30 & 31, T 7 N, R 17 W	Bryan Halstead, Bouse
Heavy Boy	1/2 mi E of Colossal Cave, Amole Dist, Pima County, S 6, T 16 S, R 17 E	Charles W. Hopkins, 2021 W. Weldon/& James I. Stephens Phoenix
Hopeful	Warren Dist. Cochise Co.	-
Hylstad	30 mi. S.E. of Kingman, Maynard Dist., Mohave Co.	Harry Clark, Box 989, Kingman (1942)
Judge	4 mi S Bouse, Yuma Co.	S.J. Curtis Estate c/o Dan Curtis, Bouse <i>1942</i>
Keiser Deposit (Sierra Blanca Claims)	Plomosa Dist., Yuma Co. T 5 N, R 17 W	Wm. G. Keiser, Quartzsite <i>Dec 1942</i>
Little Mule	Stanley Butte, Ss/11 & 12, T 5 S, R 19 E	Reed R. Crunk et al Box 11, Safford
Lodi Barium Claim	4 mi NW Bouse, Plomosa Dist. Yuma Co.	C.R. Allen et al <i>(1942)</i> El Centro, Calif.
Lone Pine	Sunflower Dist., Gila Co. Sec. 35, T 7 N, R 9 E	Gus & P. Packard et al Box 469, Mesa
*Halls Barium	Cottonwood Pass, Yuma Co., S 1, T 6 N, R 14 W	Earnest Hall, <i>Bonitas</i> Blythe, Calif. <i>(1942)</i>

Lucky Jack & Adams	8 mi NE of Wickenburg, Blue Tanks Dist. Yavapai Co. Tiger Mammoth Dist., Pinal Co.	Thad Adams, 11316 Elliott Ave., El Monte, Calif.
<u>Mammoth</u>		Magma Copper Co., P.O. M San Manuel, 85031
Marcotte	(near Klondyke), Graham Co. S 13, T 8 S, R 21 E	A.J. Marcotte et al, Box 52, Klondyke
McCracken	Owens Dist., Mohave Co.	McCracken Mountain Mines Co., Box 35, Yucca
Mendevil Claim	Eureka Dist., Yuma Co.	W.D. Riley et al (1904) 37 2nd St., Yuma
M.G.M.	Blue Tanks Dist, Yavapai Co. S 25, T 8 N, R 4 W	Robert A. Galloway & Raymond T. Murphy
Mitchell	near Parker, Yuma Co.	B. F. Mitchell, 2418 E. Monroe, Phoenix
Mohave Barite	15 mi NW of Kingman, Wallapai Dist., Mohave Co.	Emery Blevins, Wikieup
Monarch No. 1	S 31, T. 7 N., R. 17 W, Bouse Dist. Yuma Co.	Bryan Halstead, Bouse
Morning Sun & Grease- wood No. 1	Bouse Dist., Yuma Co. S 32, T. 7 N, R. 17 W	James B. Simpson, Bouse P.O. Box 301
Norps	Harquahala Dist., Yuma Co. S 31, T 5 N, R. 10 W, S 36, T 5 N, R 11 W	Marvin Northrop et al 210 N 8, Buckeye
Nottbusch		
Nottbusch (Silver Prince)	Neversweat Dist., Yuma Co. S 15, T 4 S, R 15 W	John A. Nottbusch 971 24th St. San Bernardino, Calif.
x		
Old Reliable	Copper Creek Dist., Pinal Co.	Siskon Corp., P.O. Box 889, Reno, Nevada
Pay Day	Bouse Dist., Yuma County S 29, T 7 N, R 17 W	James M. Sprinkle, Bouse
Princess Ann (Fay L)	Big Horn Dist., Maricopa Co. S 34, T 5 N, R 10 W	W.F. Paine, et al 5720 E. Indian School Rd., Scottsdale
Quijotea	Quijotea Dist., Pima Co. S 33, T 15 S., R 2 E	Papago Indian Tribe, Sells
Rainbow (Theba) Ramirez Group	near Theba, T 6 S, R 5 W, Maricopa Co. North Mule Mtns., Tombstone Dist., Cochise Co. S 30, T. 21 S, R. 24 E.	Cecil Ramirez et al, Tombstone
Red Chief	Plomosa Dist., Yuma Co. S 29, 31-32, T 6 N, R 17 W	Olin N. Jaye, Weatherford, Texas

Rowley	W side Painted Rock Mts., Maricopa Co. SE $\frac{1}{4}$ S/ $\frac{1}{4}$ NE $\frac{1}{4}$ S 25, T 4 S, R 8 W	C.A. Rowley, (Pres. Rowley Mines, Inc.) 701 E. 59th St., Los Angeles, Calif. (1957)
Rucker	Cottonwood Cliffs Dist., Mohave Co., (Rucker Canyon) S 2, T 20 N R 12 W	Emery Blevins, Wikieup
Signal Point Group	Peabi- Perilla Mtns. E of Douglas, Cochise Co.	Geo. E. Hemphill, (1915)
— Silver Belt	Big Bug Dist., Yavapai Co.	Shattuck Denn, 320 Park Ave., N.Y. 10020
Silver King	Silver (Eureka), Yuma Co. S 1, T 4 S, R 23 W	James Byrom (1958)
Silver Queen	Silver Mtn. Dist., Yavapai Co., T 9 N, R 1 W	Jack Hughes, et al 3206 N. 30th St., Phoenix
* Sonora Mine	Castle Dome Dist., Yuma Co.	Vincent Apple, 472 Orange Ave., Yuma
Sterling No. 1	Cunningham Pass Dist., Yuma Co. S 4, T 6 N, R 13 W	A.N. Johnson & Nelson T. Zuver
Toltec (Renner)	1 mile N of Mohawk, Mohawk Dist., Yuma Co., S 11, ¹² 18 S, R 15 W	James Renner, Mohawk
Top Hat x	Spring Creek Dist., Gila Co. S 31-32, T 8 N, R 12 E	Flora Massingill et al 2063 W. 1st St., Mesa
White Christmas	Bouse Dist., Yuma Co. S 12, T 7 N, R 17 W	James B. Simpson, Bouse
White Prince	Quijotoa Dist., Pima Co. Approx. S 17, T 15 S, R 2 E	William H. Coplen Box 301, Sells
White Rock (Blue Bird)	Big Horn Dist., Maricopa Co. S 35, T 5 N., R 10 W	W.F. Paine, 5720 E. Indian School Rd., Scottsdale
White Rock & White Eagle	Bouse Dist., Yuma Co. S 17 & 20, T 7 N, R 17 W	James M. Sprinkle and James B. Simpson, Bouse
White Spar	Walker-Dist Yavapai Co. S 2, T 12 N, R 3 W	Harold H. Block, Los Angeles, California
Williams Property	near Wikieup	O.G. Williams, 1616 E Orangewood, Phoenix
Zulu & Green Valley	Green Valley Dist., Gila Co. S 1, T 9 N, R 9 E	William E. Jackson and Walter Lovelady, Box 113 Payson
*Silver Shield	Quijotoa Dist., Pima Co. S 33, T 15 S, R 2 E	Dick Ballas, 203 W. Pima St. Gila Bend, -Ari

Other known occurrences

Cochise Co.	$\frac{1}{2}$ mi W of Lucky Cuss mine, Tombstone Dist.
Coconino Co.	Grand Canyon, Kaibab Trail
Gila Co.	near Coolidge Dam
* Mohave Co.	20 miles from Boulder Dam and near Alamo Crossing
Pima Co.	Picacho de Calera Hills, approx T 20 S, R 10 E
Yavapai-Co	Bagdad
Yuma Co.	Cottonwood Pass area, T 6 N, R 13 W
	Sheep Tanks Dist, T1 S, R 14 W
* Maricopa Co.	Big Horn Dist. - 20 miles S of Aguila

USBM IC 8763

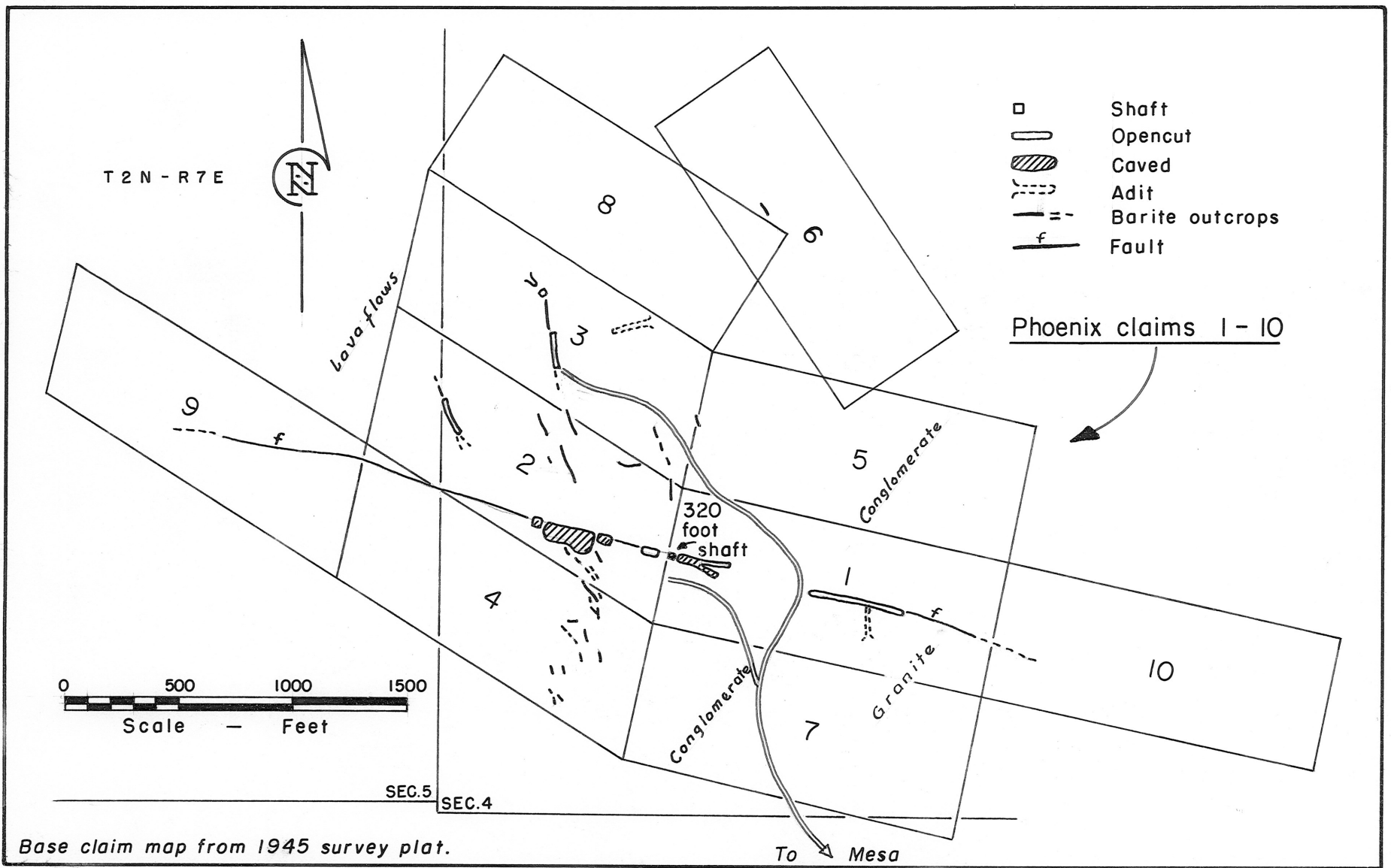
USBM R.I. 5651

Minerals of Arizona by Frederic W. Galbraith & Daniel J. Brennan

U.S.G.S. Bull. 1072-B

LIST OF ARIZONA BARITE DEPOSITS- 71

80- ARIZONA DEPARTMENT OF MINERAL RESOURCES
72- MINERAL BUILDING, FAIRGROUNDS
62- PHOENIX, ARIZONA



Base claim map from 1945 survey plat.

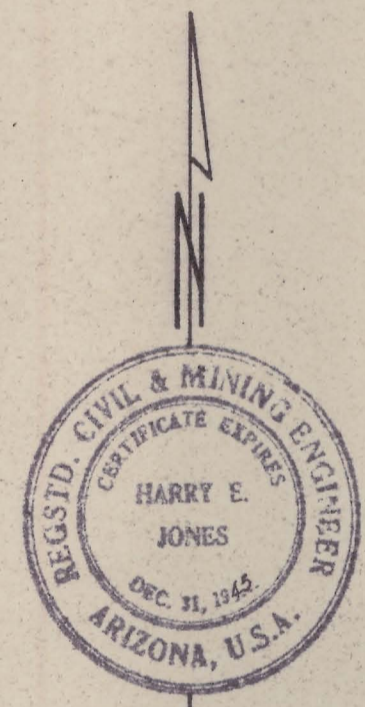
Figure 10- Sketch map of Granite Reef property

LOT 9

LOT 10

SECTION 5
T. 2 N., R. 7 E.

SECTION 4
T. 2 N., R. 7 E.



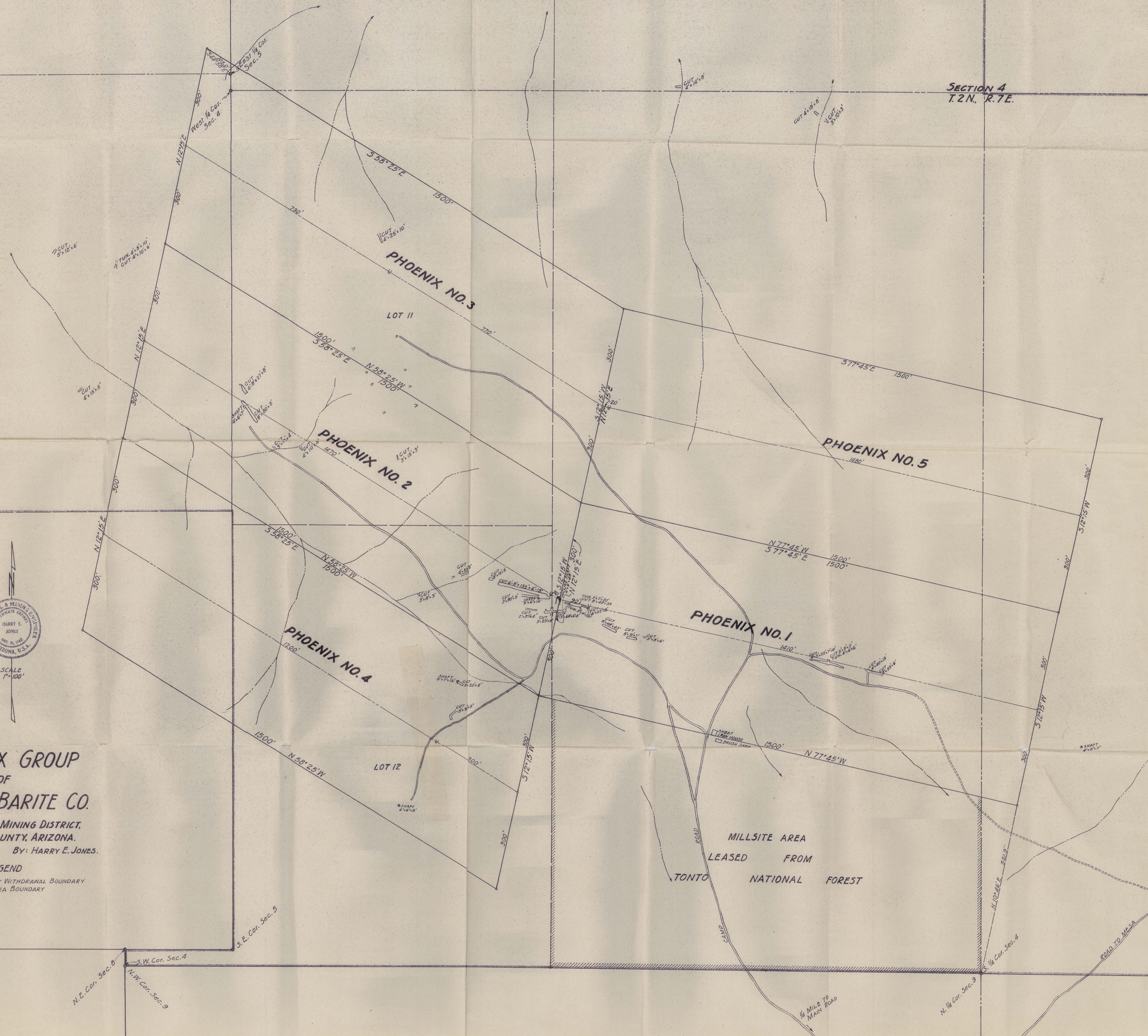
SCALE
1"=100'

PHOENIX GROUP OF ARIZONA BARITE CO.

GRANITE REEF MINING DISTRICT,
MARICOPA COUNTY, ARIZONA.
SUR. No. 45419 By: HARRY E. JONES.

LEGEND

- MINING ENTRY WITHDRAWAL BOUNDARY
- ||||| - MILLSITE AREA BOUNDARY



N.E. Cor. Sec. 8
S.W. Cor. Sec. 4
N.W. Cor. Sec. 9
S.E. Cor. Sec. 5

MILLSITE AREA
LEASED FROM
TONTON NATIONAL FOREST

1/4 MILE TO
MAIN ROAD

ROAD TO MESA