



## **CONTACT INFORMATION**

Mining Records Curator  
Arizona Geological Survey  
1520 West Adams St.  
Phoenix, AZ 85007  
602-771-1601  
<http://www.azgs.az.gov>  
[inquiries@azgs.az.gov](mailto:inquiries@azgs.az.gov)

The following file is part of the

Arizona Department of Mines and Mineral Resources Mining Collection

## **ACCESS STATEMENT**

These digitized collections are accessible for purposes of education and research. We have indicated what we know about copyright and rights of privacy, publicity, or trademark. Due to the nature of archival collections, we are not always able to identify this information. We are eager to hear from any rights owners, so that we may obtain accurate information. Upon request, we will remove material from public view while we address a rights issue.

## **CONSTRAINTS STATEMENT**

The Arizona Geological Survey does not claim to control all rights for all materials in its collection. These rights include, but are not limited to: copyright, privacy rights, and cultural protection rights. The User hereby assumes all responsibility for obtaining any rights to use the material in excess of "fair use."

The Survey makes no intellectual property claims to the products created by individual authors in the manuscript collections, except when the author deeded those rights to the Survey or when those authors were employed by the State of Arizona and created intellectual products as a function of their official duties. The Survey does maintain property rights to the physical and digital representations of the works.

## **QUALITY STATEMENT**

The Arizona Geological Survey is not responsible for the accuracy of the records, information, or opinions that may be contained in the files. The Survey collects, catalogs, and archives data on mineral properties regardless of its views of the veracity or accuracy of those data.

PRINTED: 11/21/2002

ARIZONA DEPARTMENT OF MINES AND MINERAL RESOURCES AZMILS DATA

PRIMARY NAME: ARIZONA GOLD FLAGSTONE QUARRY

ALTERNATE NAMES:

NAVAJO COUNTY MILS NUMBER: 222

LOCATION: TOWNSHIP 14 N RANGE 21 E SECTION 25 QUARTER NW  
LATITUDE: N 34DEG 34MIN 40SEC LONGITUDE: W 110DEG 04MIN 25SEC  
TOPO MAP NAME: SNOWFLAKE - 7.5 MIN

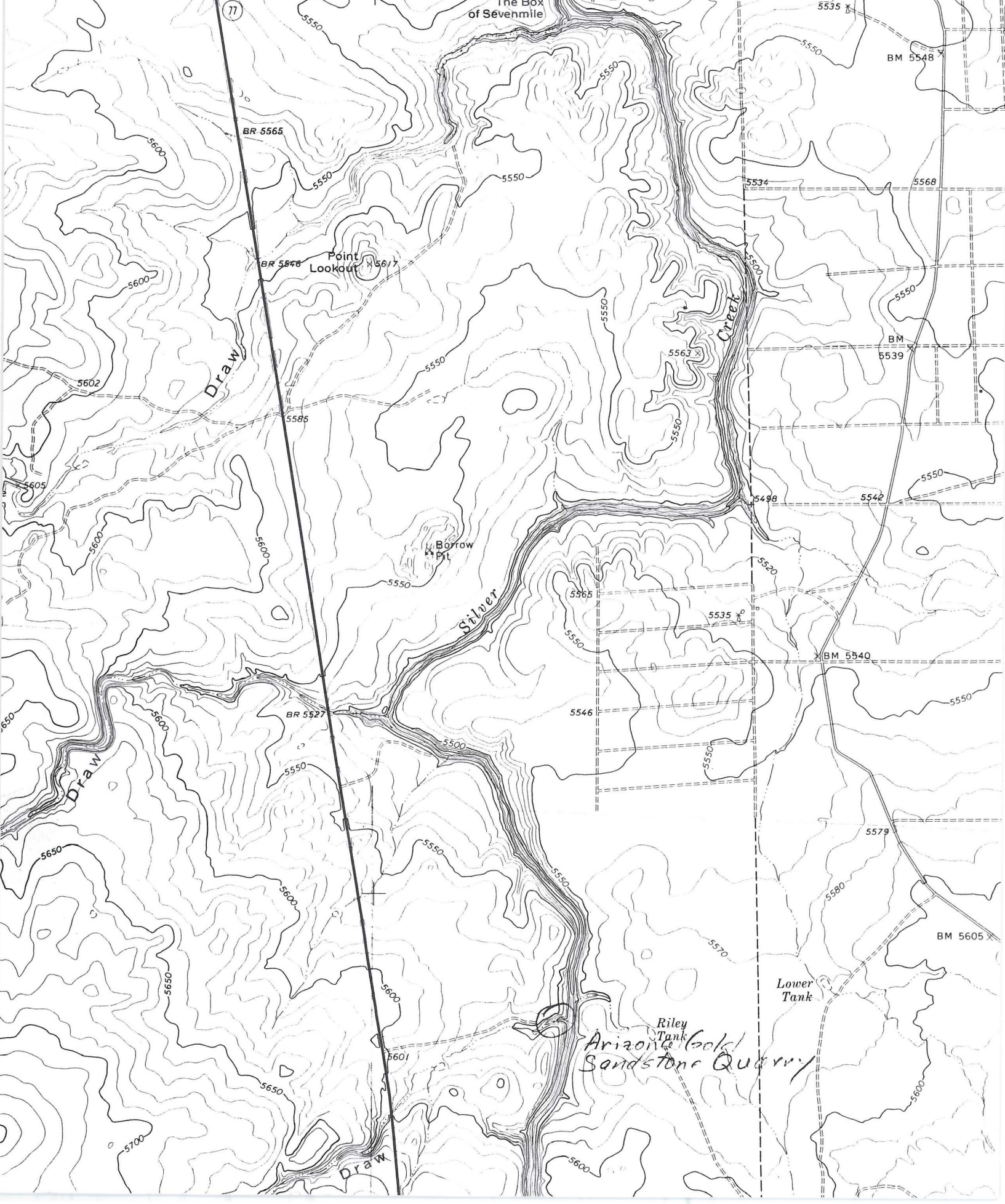
CURRENT STATUS: PRODUCER 1996

COMMODITY:

STONE SANDSTONE  
STONE FLAGSTONE

BIBLIOGRAPHY:

ADMMR ARIZONA GOLD FLAGSTONE QUARRY  
PHILLIPS, K.A., ET AL, 1997, ACTIVE MINES IN  
ARIZONA-1997, AZ DEPT MINES & MIN RES  
DIRECTORY D45



77

The Box of Sevenmile

BR 5565

BR 5548 Point Lookout

Borrow Pit

BR 5527

Riley Tank Arizona Gold Sandstone Quarry

Lower Tank

BM 5548

BM 5539

BM 5540

BM 5605

From: Arizona Department of Mines and Mineral Resources *Directory of Active Mines 1997*

**re Arizona Gold Flagstone Quarry**

**SOUTHWESTERN STONE, INC.**

18 S. Main, P.O. Box 454, Taylor, AZ 85939 - Phone (520) 536-4912 - Employees: 12 - Quarries sandstone and fabricates building and patio stone - diamond saws tiles and decorative objects.

Owner/Operator..... Barbara Chartrand

Co-owner/Plant Operator..... Lee Chartrand

Foreman..... Pat Denetso

**Sierra Quarry T12N R20E Sec. 20**

**Arizona Picture Rock Quarry T11N R14E Sec. 3**

**Brown Quarry T15N R19E Sec. 31**

**Buckskin Quarry T17N R21E Sec. 30**

**Arizona Gold T14N R21E Sec 25**