



## **CONTACT INFORMATION**

Mining Records Curator  
Arizona Geological Survey  
1520 West Adams St.  
Phoenix, AZ 85007  
602-771-1601  
<http://www.azgs.az.gov>  
[inquiries@azgs.az.gov](mailto:inquiries@azgs.az.gov)

The following file is part of the

Arizona Department of Mines and Mineral Resources Mining Collection

## **ACCESS STATEMENT**

These digitized collections are accessible for purposes of education and research. We have indicated what we know about copyright and rights of privacy, publicity, or trademark. Due to the nature of archival collections, we are not always able to identify this information. We are eager to hear from any rights owners, so that we may obtain accurate information. Upon request, we will remove material from public view while we address a rights issue.

## **CONSTRAINTS STATEMENT**

The Arizona Geological Survey does not claim to control all rights for all materials in its collection. These rights include, but are not limited to: copyright, privacy rights, and cultural protection rights. The User hereby assumes all responsibility for obtaining any rights to use the material in excess of "fair use."

The Survey makes no intellectual property claims to the products created by individual authors in the manuscript collections, except when the author deeded those rights to the Survey or when those authors were employed by the State of Arizona and created intellectual products as a function of their official duties. The Survey does maintain property rights to the physical and digital representations of the works.

## **QUALITY STATEMENT**

The Arizona Geological Survey is not responsible for the accuracy of the records, information, or opinions that may be contained in the files. The Survey collects, catalogs, and archives data on mineral properties regardless of its views of the veracity or accuracy of those data.

12/04/96

ARIZONA DEPARTMENT OF MINES AND MINERAL RESOURCES FILE DATA

PRIMARY NAME: APACHE MAID GROUP

ALTERNATE NAMES:

BLACKWATER COPPER

PINAL COUNTY MILS NUMBER: 283

LOCATION: TOWNSHIP 3 S RANGE 7 E SECTION 35 QUARTER S2  
LATITUDE: N 33DEG 07MIN 26SEC LONGITUDE: W 111DEG 36MIN 33SEC  
TOPO MAP NAME: BLACKWATER - 7.5 MIN

CURRENT STATUS: EXP PROSPECT

COMMODITY:

COPPER  
GOLD

BIBLIOGRAPHY:

ADMMR APACHE MAID GROUP FILE  
ADMMR MINERAL BUTTE & GOLDMINE MOUNTAIN AREAS  
FILE, MAP  
ADMMR BLACKWATER COPPER FILE  
ADMMR FILES  
CLAIMS EXTEND INTO SEC. 34  
CLAIMS OVERLAP UNPAT. PROP. OF BLACKWATER  
COPPER

APACHE MAID GROUP

REFERENCES

PINAL COUNTY  
BLACKWATER DIST.  
T4S R7E Sec. 3

Pinal County MILS Index #277

AKA: Mineral Butte, Blackwater Copper, Unpatented Claims M S 3739,  
Unpatented Claims M S 3922

Blackwater Copper & Leased Sec. 32 (file)

Mineral Butte and Goldmine Mtn Areas (file)

BLM Mining Dist. Sheets, 568, 572

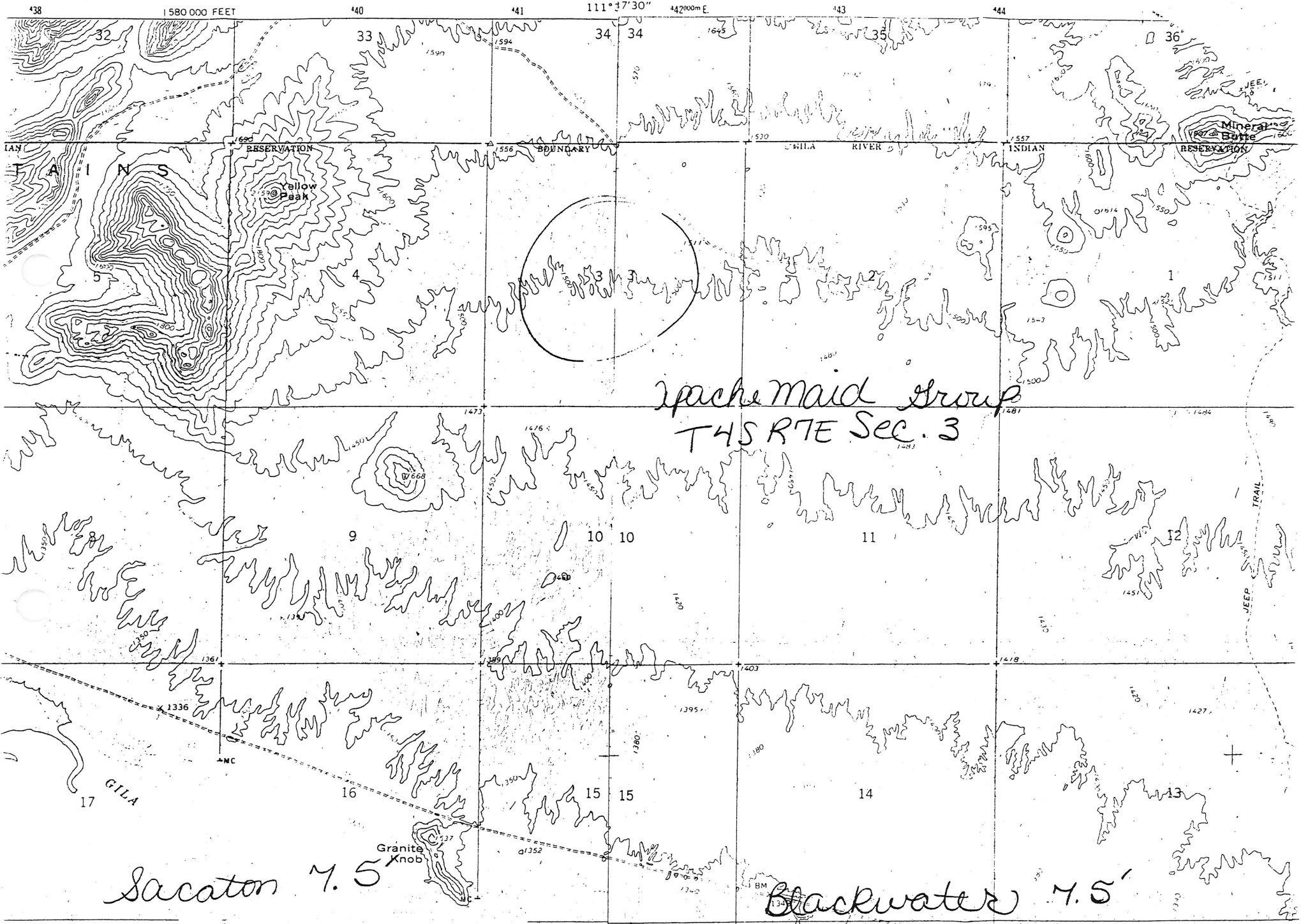
USGS 1278-D, 1976

Bear Creek Mining Co. (file)

Sacaton 7.5' Topo & Blackwater 7.5' Topo (included in file)

SACATON QUADRANGLE  
ARIZONA - IAL CO.  
7.5 MINUTE SERIES (TOPOGRAPHIC)  
SW/4 SACATON 15' QUADRANGLE

UNITED STATES  
DEPARTMENT OF THE INTERIOR  
GEOLOGICAL SURVEY



JAN 30 1964

## DEPARTMENT OF MINERAL RESOURCES

STATE OF ARIZONA  
FIELD ENGINEERS REPORT

Mine APACHE MAID GROUP Date January 14, 1964  
 District Blackwater Dist., Pinal County Engineer Lewis A. Smith  
 Subject: Visit with Donald McCarthy (12/17/63) and Conference with R. B. Rodney.  
 (~~Attempts to contact Meyers failed~~). *revised out by Mr Smith.*  
*11 - changed by Mr Meyers - 2-6-64*  
 PROPERTY: 10 claims (unpatented).

LOCATION: Mostly in the south-central portion of S-35, T3S, R7E, adjoining Block 1 of the Mineral Butte Group and surrounded on the NW and S by Wedge Calims.

OWNERS: R. B. Rodney, 265 W. 1st Street, Mesa, Arizona ( $\frac{1}{2}$ ).  
 Charles A. Meyers, 3409 W. Belmont, Phoenix ( $\frac{1}{2}$ ).

MINERALS: Copper and Gold.

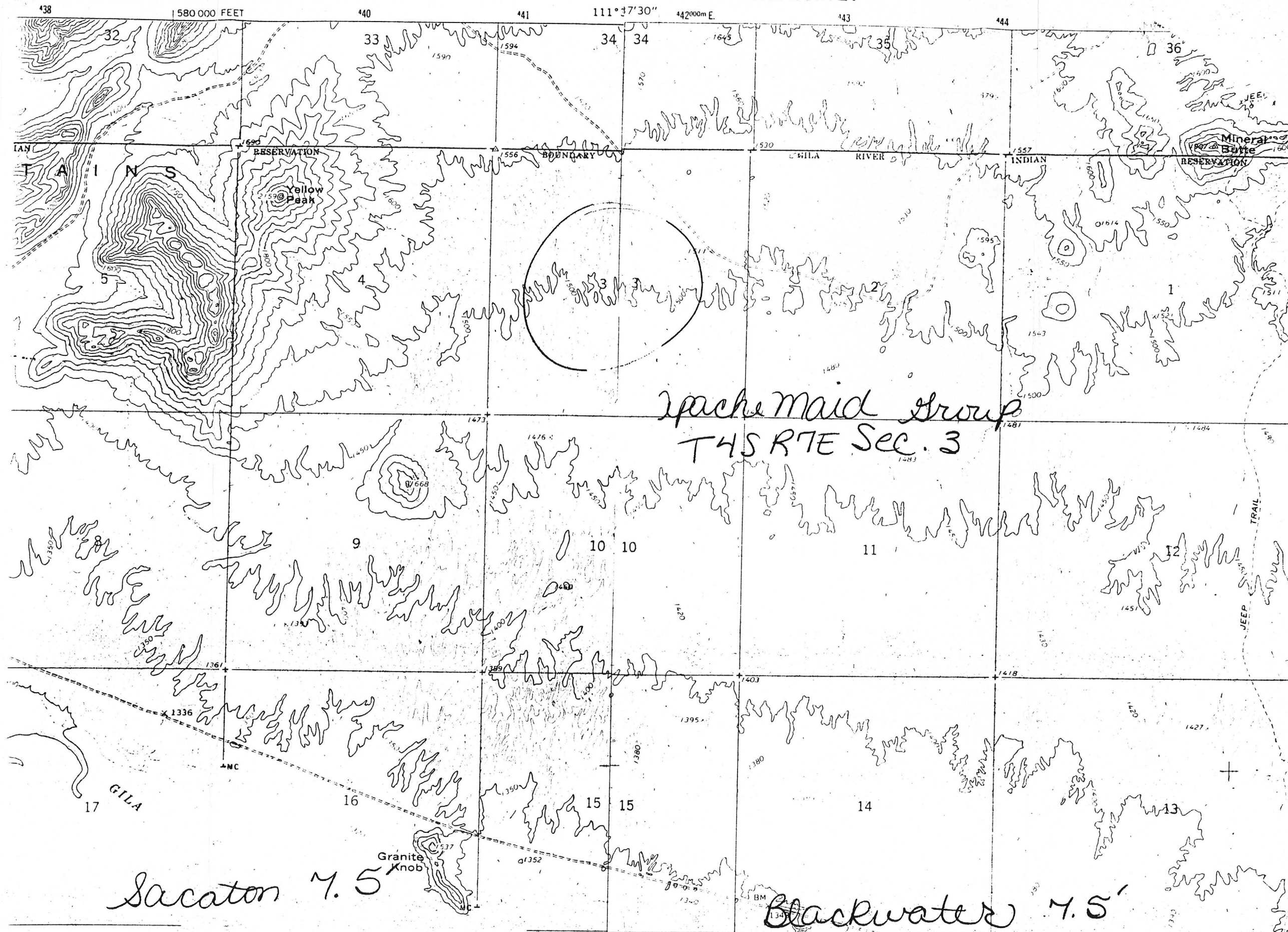
WORK: Consists of location pits and bulldozer cuts that are shallow.

GEOLOGY: The granitic rock outcrops less here than in the pediment or the "West" Mineral Butte. It is capped in much of the ~~area~~<sup>area</sup> by schist that is, in the north band of claims, cut by intermittently outcrops of diabase. The schist is severely and intricately folded near the granitic rock contact. It contains bands, ranging from a few feet up to 50 feet wide, in which the schist laminae are spread and occupied by stringers and small lenses of white "bull" quartz that also is equally folded. Locally the quartz contains a small gold content, but on the whole has little. The schist does not appear to have much mineralization either. However, the underlying granite is strongly stained red by limonite similar to that observed in the granitic rock of the pediment to the south. Drilling E and W of this group disclosed ore in depth.

---

see MINERAL BUTTE & GOLDMINE MOUNTAIN AREAS (file)

---



Sacaton 7.5'

Blackwater 7.5'

Apache Maid Group  
T4S R7E Sec. 3

TAI N S

RESERVATION

BOUNDARY

GILA RIVER

INDIAN RESERVATION

Mineral Butte

Yellow Peak

Granite Knob

GILA

TRAIL  
DEEP