



## **CONTACT INFORMATION**

Mining Records Curator  
Arizona Geological Survey  
1520 West Adams St.  
Phoenix, AZ 85007  
602-771-1601  
<http://www.azgs.az.gov>  
[inquiries@azgs.az.gov](mailto:inquiries@azgs.az.gov)

The following file is part of the

Arizona Department of Mines and Mineral Resources Mining Collection

## **ACCESS STATEMENT**

These digitized collections are accessible for purposes of education and research. We have indicated what we know about copyright and rights of privacy, publicity, or trademark. Due to the nature of archival collections, we are not always able to identify this information. We are eager to hear from any rights owners, so that we may obtain accurate information. Upon request, we will remove material from public view while we address a rights issue.

## **CONSTRAINTS STATEMENT**

The Arizona Geological Survey does not claim to control all rights for all materials in its collection. These rights include, but are not limited to: copyright, privacy rights, and cultural protection rights. The User hereby assumes all responsibility for obtaining any rights to use the material in excess of "fair use."

The Survey makes no intellectual property claims to the products created by individual authors in the manuscript collections, except when the author deeded those rights to the Survey or when those authors were employed by the State of Arizona and created intellectual products as a function of their official duties. The Survey does maintain property rights to the physical and digital representations of the works.

## **QUALITY STATEMENT**

The Arizona Geological Survey is not responsible for the accuracy of the records, information, or opinions that may be contained in the files. The Survey collects, catalogs, and archives data on mineral properties regardless of its views of the veracity or accuracy of those data.

PRINTED: 09-24-2012

ARIZONA DEPARTMENT OF MINES AND MINERAL RESOURCES AZMILS DATA

PRIMARY NAME: APACHE CAVE CLAIM

ALTERNATE NAMES:  
TAYLOR CLAIMS  
M.S. 4471

MARICOPA COUNTY MILS NUMBER: 408

LOCATION: TOWNSHIP 2 N RANGE 9 E SECTION 32 QUARTER N2  
LATITUDE: N 33DEG 28MIN 28SEC LONGITUDE: W 111DEG 27MIN 07SEC  
TOPO MAP NAME: GOLDFIELD - 7.5 MIN

CURRENT STATUS: UNKNOWN

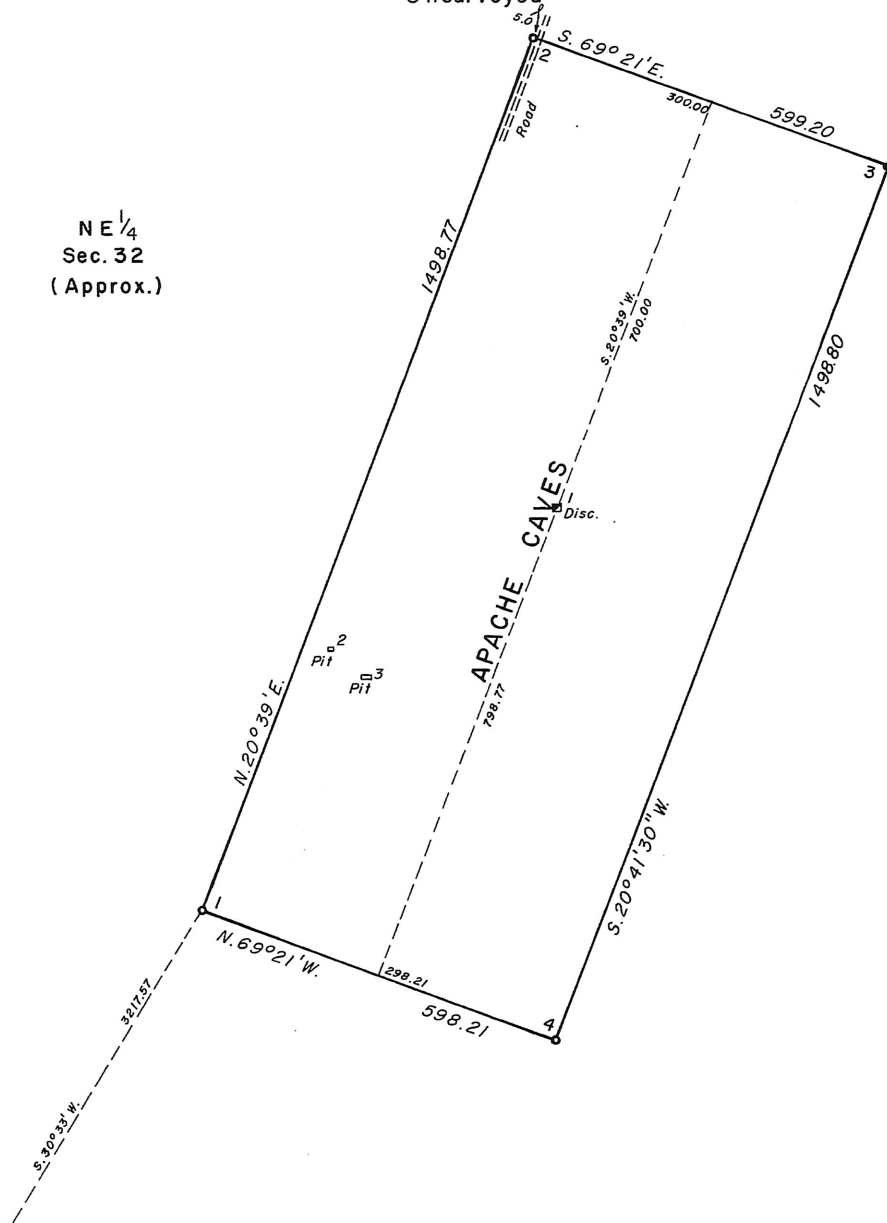
COMMODITY:  
UNKNOWN

BIBLIOGRAPHY:  
BLM MINING DISTRICT SHEET  
BLM MINERAL SURVEY MS 4471  
ADMMR APACHE CAVES FILE

T.2 N., R.9 E., G. & S.R.M.

Unsurveyed

NE 1/4  
Sec. 32  
(Approx.)



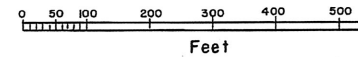
Apache Caves lode, M.S. 4471 was canceled April 13, 1999, by memo 9605 (952) M.S. 4471, which is now a part of the original field notes.

# MINERAL SURVEY NO. 4471 ARIZONA

CLAIM OF  
RAYMOND C. TAYLOR & RAYMOND G

KNOWN AS THE  
APACHE CAVES  
LODE

SITUATE IN  
Sec. 32, T.2 N., R.9 E., G. & S.R.M., (Unst)  
MARICOPA COUNTY  
Superstition Mining District  
Arizona Land District  
Lat. 33° 28' 38" N., Long. 111° 27' W. at C



Feet

Magnetic Declination 14° 15' E

Surveyed, Dec. 13 to Dec. 16, 1958  
By Harvey W. Smith, Mineral Survey

UNITED STATES DEPARTMENT OF THE IN  
BUREAU OF LAND MANAGEMENT

Phoenix, Arizona, May 11 - 1959

I hereby certify that this plat of Mineral  
No. 4471, Arizona, is strictly conformable to  
field notes of said survey which have been  
read and approved.

Lester S. Man  
Office Cadastral Engineer

TIE TO THE CORNER OF SECS. 5,  
6, 31 AND 32, T.P.S. 1 & 2 N., R. 9 E., G. &  
S. R. M.

5

w

**DEPARTMENT OF MINERAL RESOURCES**  
STATE OF ARIZONA  
**FIELD ENGINEERS REPORT**

Mine Taylor Claim

Date October 7, 1960

District Goldfields District, Maricopa Co.

Engineer Lewis A. Smith

Subject: Interview with Raymond C. Taylor

Claim: 1 (in process of patenting)

Location: S. 32, T. 2 N., R. 9 E.

Mineral: ' Raymond C. Taylor, 711 W. Piedmont, Phoenix  
' Raymond G. Taylor, 1371 Elbur Ave., Cleveland, Ohio

Work: 15 foot shaft on a lead (headframe on property).

Geology: An andesite porphyry dike (?) cuts granite and granitic conglomerate. The mineral zone is near or on the contact. Assays up to 2 ounces of silver and a little gold were obtained over a width of several feet (varies notably). The limonite (red and black) is fairly typical of much of the Goldfields mineralization. The kaolinization in the andesite near the contact is fairly intense.