



CONTACT INFORMATION

Mining Records Curator
Arizona Geological Survey
1520 West Adams St.
Phoenix, AZ 85007
602-771-1601
<http://www.azgs.az.gov>
inquiries@azgs.az.gov

The following file is part of the

Arizona Department of Mines and Mineral Resources Mining Collection

ACCESS STATEMENT

These digitized collections are accessible for purposes of education and research. We have indicated what we know about copyright and rights of privacy, publicity, or trademark. Due to the nature of archival collections, we are not always able to identify this information. We are eager to hear from any rights owners, so that we may obtain accurate information. Upon request, we will remove material from public view while we address a rights issue.

CONSTRAINTS STATEMENT

The Arizona Geological Survey does not claim to control all rights for all materials in its collection. These rights include, but are not limited to: copyright, privacy rights, and cultural protection rights. The User hereby assumes all responsibility for obtaining any rights to use the material in excess of "fair use."

The Survey makes no intellectual property claims to the products created by individual authors in the manuscript collections, except when the author deeded those rights to the Survey or when those authors were employed by the State of Arizona and created intellectual products as a function of their official duties. The Survey does maintain property rights to the physical and digital representations of the works.

QUALITY STATEMENT

The Arizona Geological Survey is not responsible for the accuracy of the records, information, or opinions that may be contained in the files. The Survey collects, catalogs, and archives data on mineral properties regardless of its views of the veracity or accuracy of those data.

02/03/86

ARIZONA DEPARTMENT OF MINES AND MINERAL RESOURCES FILE DATA

PRIMARY NAME: APACHE BROWN SCHIST QUARRY

ALTERNATE NAMES:

MAYER SCHIST QUARRY

YAVAPAI COUNTY MILS NUMBER: 1043A

LOCATION: TOWNSHIP 12 N RANGE 1 E SECTION 23 QTR. SE
LATITUDE:N 34DEG 24MIN 06SEC LONGITUDE:W 112DEG 13MIN 09SEC
TOPO MAP NAME: MAYER - 7.5 MIN

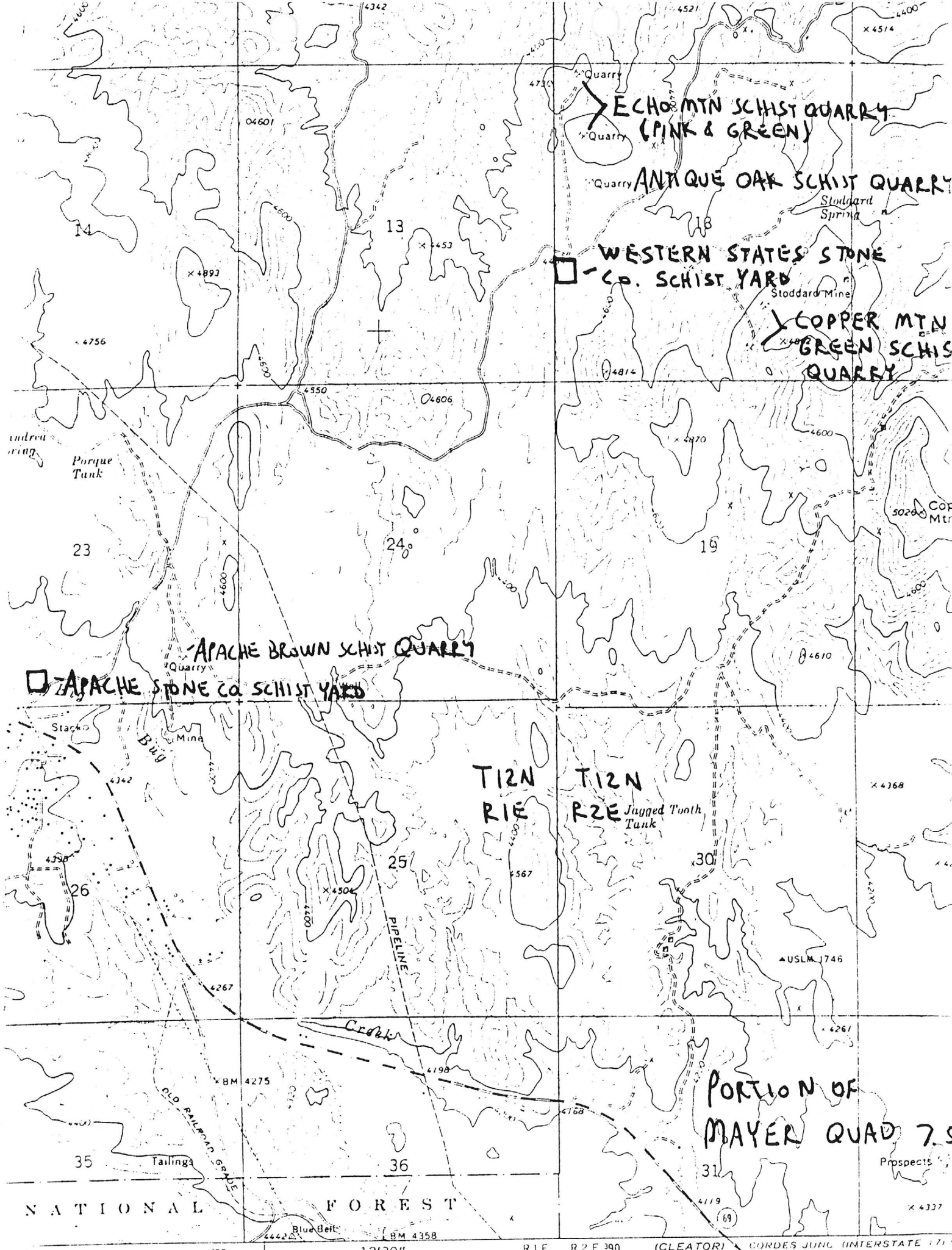
CURRENT STATUS: PRODUCER

COMMODITY:

CUT STONE AND STONE PRODUCTS
STONE DIMENSION SCHIST

BIBLIOGRAPHY:

USGS MAYER QUAD
ADMMR APACHE BROWN SCHIST QUARRY FILE
OPERATED BY APACHE STONE CO



ECHO MTN SCHIST QUARRY
(PINK & GREEN)

ANTIQUE OAK SCHIST QUARRY

WESTERN STATES STONE
Co. SCHIST YARD

COPPER MTN
GREEN SCHIS
QUARRY

APACHE BROWN SCHIST QUARRY

APACHE STONE Co SCHIST YARD

T12N
R1E

T12N
R2E

PORTION OF
MAYER QUAD 7.5

NATIONAL FOREST

(CLEATOR) 3552 1 SW
CORDS JUNG (INTERSTATE 171)
PHOENIX 69 MI

SCALE 1:24,000

MINE VISIT

MINE: Mayer Onyx Property (f) and Mayer Schist Quarries (f)

DATE: July 14, 1984

ENGINEER: Nyal J. Niemuth, Mineral Resource Specialist

Apache Stone, 4637 E. Washington, Phoenix, AZ 85034, ph 267-8658, a division of Halquist Stone Co. Inc. operates an equipment and stone storage yard in T12N, R1E Sec 23 C. Though an active summer operation, this being saturday, their operations were idle.

At the yard is an inventory of approximately 600 skids or palets loaded with Schist (500) and Onyx (100) building and decorative stones. Typical stone dimensions would be 15" x 30" and 4-7" thick. Equipment on site at the yard and quarries included: an air track drill, compressor, 2 catapillar type vehicles, a loader, 2 fork lift trucks, some semi-truck flat bed trailers, and 2 trailers (possibly used as office and change room).

The onyx is being processed from a quarry located at T12N, R1E Sec 22 (Mayer Onyx Property file) as shown on the attached map.