



## **CONTACT INFORMATION**

Mining Records Curator  
Arizona Geological Survey  
1520 West Adams St.  
Phoenix, AZ 85007  
602-771-1601  
<http://www.azgs.az.gov>  
[inquiries@azgs.az.gov](mailto:inquiries@azgs.az.gov)

The following file is part of the

Arizona Department of Mines and Mineral Resources Mining Collection

## **ACCESS STATEMENT**

These digitized collections are accessible for purposes of education and research. We have indicated what we know about copyright and rights of privacy, publicity, or trademark. Due to the nature of archival collections, we are not always able to identify this information. We are eager to hear from any rights owners, so that we may obtain accurate information. Upon request, we will remove material from public view while we address a rights issue.

## **CONSTRAINTS STATEMENT**

The Arizona Geological Survey does not claim to control all rights for all materials in its collection. These rights include, but are not limited to: copyright, privacy rights, and cultural protection rights. The User hereby assumes all responsibility for obtaining any rights to use the material in excess of "fair use."

The Survey makes no intellectual property claims to the products created by individual authors in the manuscript collections, except when the author deeded those rights to the Survey or when those authors were employed by the State of Arizona and created intellectual products as a function of their official duties. The Survey does maintain property rights to the physical and digital representations of the works.

## **QUALITY STATEMENT**

The Arizona Geological Survey is not responsible for the accuracy of the records, information, or opinions that may be contained in the files. The Survey collects, catalogs, and archives data on mineral properties regardless of its views of the veracity or accuracy of those data.

03/04/92

ARIZONA DEPARTMENT OF MINES AND MINERAL RESOURCES FILE DATA

PRIMARY NAME: ANTLER

ALTERNATE NAMES:

SPUYTEN DUYVIL

MOHAVE COUNTY MILS NUMBER: 500A

LOCATION: TOWNSHIP 17 N RANGE 16 W SECTION 4 QUARTER E2  
LATITUDE: N 34DEG 53MIN 09SEC LONGITUDE: W 113DEG 57MIN 59SEC  
TOPO MAP NAME: WABAYUMA PEAK - 7.5 MIN

CURRENT STATUS: PAST PRODUCER

COMMODITY:

ZINC SULFIDE  
COPPER SULFIDE  
LEAD SULFIDE  
IRON SULFIDE  
BISMUTH  
CADMIUM  
SILICON  
SILVER  
GOLD LODE  
CLAY REFRACTORY

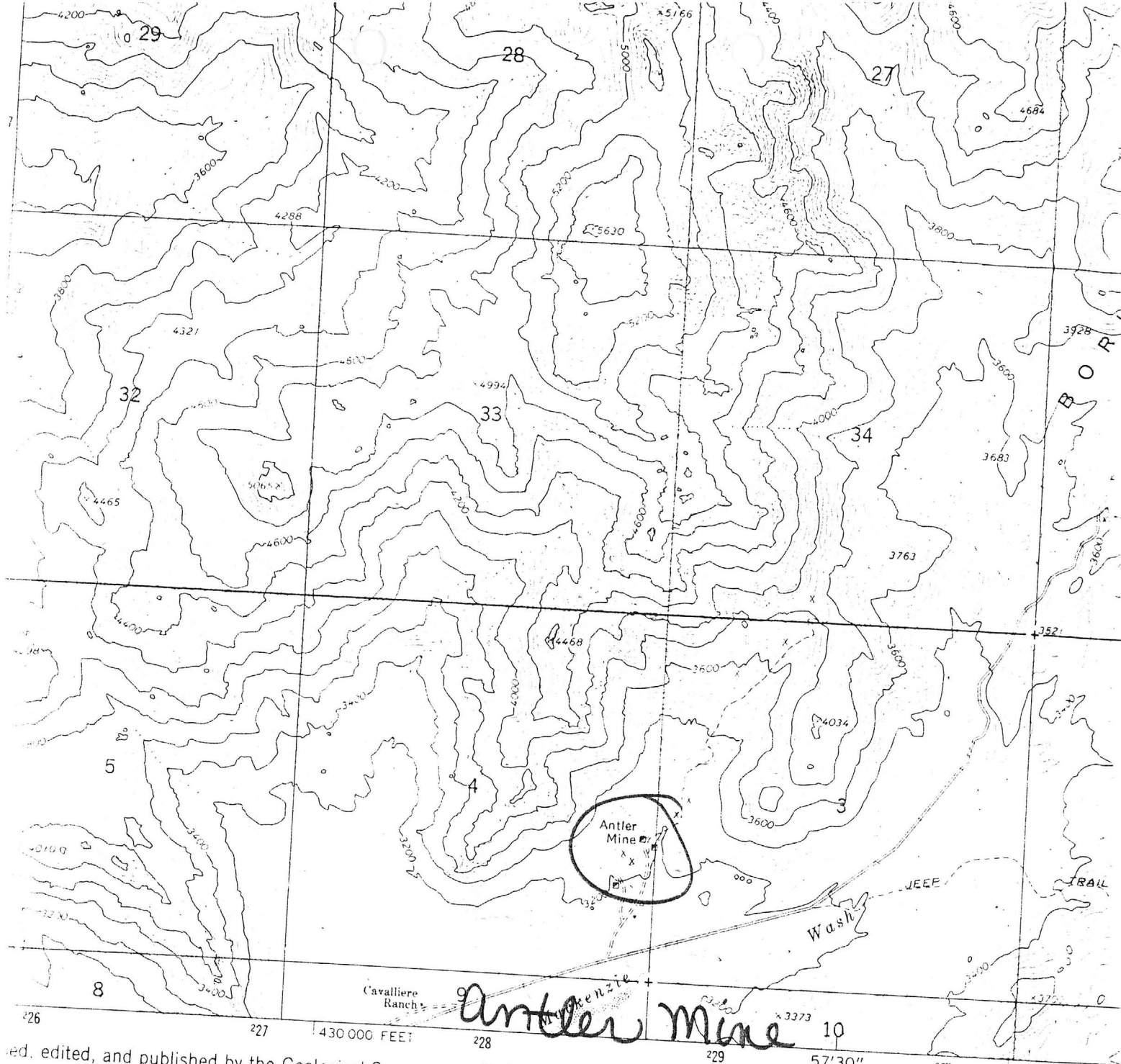
BIBLIOGRAPHY:

ADMMR ANTLER MINE FILE  
ADMMR MOHAVE CUSTOM MILL PROJECT  
EVAL. MIN. RES. OF HUALAPAI INDIANS, VOL. I,  
P 82; 1964  
ADMMR MAPS (FLAT STORAGE AREA - 2ND DRAWER)  
BLM UNIT RES. ANALYSIS STEP 3 & 4 OF HALAPAI  
UNIT (ISR-20)  
MALACH, R. "MOH. CTY MINES" P 13, 1977  
AZ. STATE MINE INSP. ANNUAL RPT, 1970  
ROMSLO, T.M. "ANTLER COPPER-ZINC DPSTS AZ"  
USBM RI 4214, 1948  
ROSEVEAE, G.H. "MIN. & WTR RES. OF AZ" AZBM  
BULL 180, P 99, 120, 151, 193, 1969  
SKILLINGS MNG REV. 5/14/66 P 14, 5/28/66 P 31  
10/1/66 P 4, 10/7/67 P 12  
E& MJ 3/74 P 17

CONTINUED ON NEXT PAGE

CONTINUATION OF ANTLER

E&MJ VOL. 167 NO. 6 6/66 P 682 - NO. 8 8/66 P  
131 - NO. 10 10/66 P 122 - 12/66 P 128  
PAY DIRT 6/17/66  
MNG CONGRESS JNL 5/66 P 6, 6/69 P 15  
MORE, SYVER W. "GEOL. OF ANTLER MINE" (ADMMR  
GEOLOGY FILE)  
ADMMR ANTLER "COLVO" FILE

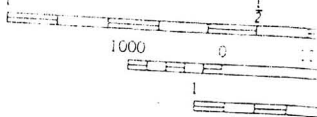


ed, edited, and published by the Geological Survey  
by USGS and USC&GS

topography by photogrammetric methods from aerial  
photographs taken 1966. Field checked 1967  
map projection. 1927 North American datum  
3 foot grid based on Arizona coordinate system, west zone  
meter Universal Transverse Mercator grid ticks,  
shown in blue

**T17N R16W Sec. 4**

GN  
MN  
1°41' 30 MILS  
145' 258 MILS



UTM GRID AND 1967 MAGNETIC NORTH  
DECLINATION AT CENTER OF SHEET

**Wabayuma 7.5'**

THIS MAP COM  
FOR SALE BY U.S. GEOLOGICAL S  
A FOLDER DESCRIBING TO

~~Antler Mine~~



Arizona Department of Mines and Mineral Resources

INFORMATION FROM MINE CARDS IN MUSEUM

ARIZONA

MOHAVE COUNTY

ANTLER MINE

MM 0 Smithsonite

MILS # 500A

1-A/A

Antler Mine (file)

MM-1037 Copper, Lead, Zinc Ore  
1148 Antlerite  
1261 Antophyllite  
949 Smithsonite in Calcite &  
Pyrophyllite  
3995 Smithsonite & Marcasite  
(Stalactite)  
3996 Smithsonite  
3997 Smithsonite  
3998 Smithsonite  
3999 Smithsonite  
4000 Smithsonite  
~~4001--Anrocacite~~  
4002 Malachite  
4003 Malachite  
541 Selenite Crystal  
542 Smithsonite  
543 Smithsonite  
604 Smithsonite  
612 Smithsonite  
4802 Smithsonite  
L737 Calcite - Smithsonite

NAME: **ANTLER**

(Gold Mine)

COUNTY: MOHAVE

WABAYUNA PL 7 1/2

T 17 N

R 16 W

SEC. 36 4

E 1 3200

DISTRICT: CEDAR VALLEY

Mineralization: Cu Cd Zn Bi

Geology:

Type Operation:

Production:

References:

\*

# ANTLER

Au, Cu, Zn

Mohave

8 - 12

T 18 N, R 15 W

P. Vukoye, 401 Verdugo Rd., Glendale, Calif.

'43

NAME OF MINE: **ANTLER**

( 12 mi E Yucca)

COUNTY: **MOHAVE**

DISTRICT: Cedar Valley

OWNERS: R.B. Strassburger, New York City &  
Orva Nelson, Perris, Calif.

METALS: CU, PB, ZN

OPERATOR AND ADDRESS:

MINE STATUS

DATE:

DATE:

5/1/44	Pete Vukoye, operator Box 482, Kingman Owned by Phelps Dodge	5/1/44	Closed--Financing
		7/44	Shipping
6/2/44	M.W. Woolley, Box 1420 S.W. City, Utah	6/2/44	FINANCING
7/30/44	Arizona Antlers, Kenneth O. Watkins, Supt., Box 67, Yucca		
12/44	D.C. Despain, Box 67, Yucca		Shipping
4/45	Ariz. Antlers Mining Co., F.F. Hintze, 602 Beason Bldg. Salt Lake City, Utah, Pres.	1/45	Closed
4/46	Jack Bonza, Arizona Antler Co., Yucca	4/45	Shipping
12/46	Arizona Antler Jack Bonza, Yucca	12/46	Developing
			Shipping

OVER-

VUKOYE, Pete

Box 482

Kingman, Ariz.

Best Bet  
Victory Mines & Milling  
Co.

5-14-43

Antler

See ~~COPPER WORLD~~ - Re mine loan application.

See ANTLER MINE - Re news item

5-12-43

See ANTLER MINE - Re sketch & Field Eng. Report

9-9-43

See ANTLER MINE - Re B premium

3-22-44

Pete Vukoye, who for many years has been associated with several mine operations in the Kingman-Chloride area in Arizona, including the Democrat and Antler properties, has left Kingman. He is located at 401 Verdugo Road, Glendale, California.

DEC 2 1944

\*

Prior to the completion of the shaft repairs, the Company hopes to be pulling broken ore from the stope areas by mid-summer. Even though an accurate schedule for cleanup and return to complete production cannot be made at this stage due to various factors, we should commence production from the mine in August and gradually increase it until full production is reached by year-end.

#### **Crested Butte, Colorado**

Our claim group which is in close proximity to the major Amax molybdenum ore body at Mt. Emmons has been evaluated by geologic mapping. Core drilling, however, is necessary in order to determine if a significant molybdenum ore body exists at depth. This will be done, weather permitting, sometime after the start up of the Silverton operation.

#### **X Antler Mine, Yucca, Arizona**

Increased copper and zinc prices have resulted in renewed interest in the Antler property by several groups. An independent study following our drilling program in 1975 has estimated the presence of approximately five million tons of "measured" and "indicated" ore, grading 1.05 ozs. silver, .94% lead, 1.95% copper and 4.13% zinc. We are hopeful that negotiations with one or more of these interested groups will result in further exploration and development of the property in the near future.

#### **Northeastern United States**

A joint venture has been entered into with General Crude Oil Company and Al-Aquitaine Exploration, Ltd., wherein they agree jointly to spend up to one million dollars for exploration in order to earn a 49% interest in the Higgins and Hamel properties and a 66⅔% interest in the remaining leases and licenses in our New England properties. Work, to date, is encouraging, and we contemplate keeping our shareholders informed as significant progress in this exploration is made.

#### **Kendrick Bay, Alaska**

Standard's interest in the property of Kendrick Bay Mining Company has been increased to 95.99%. The property is on the southeastern tip of the Prince of Wales Island and is not affected by the recent reclassification of Federal lands. Exploration by drilling underground has been completed and limited surface drilling has commenced. This should be completed by early summer.

The feasibility of placing the entire milling operation underground is being studied. This innovative plan should receive much less opposition from regulatory and environmental groups due to the drastic reduction which would result in problems associated with normal tailings disposal methods of radioactive materials.

Metallurgical problems have been encountered in extracting uranium from the loaded leach solution and in recycling the stripped leach solution due to a buildup of impurities. However, if not resolved, it appears that, at the very worst, the problems could add only a few dollars per ton to the treatment costs.

Start up of the project is dependent upon completion of a formal feasibility study and arranging for the financing required for the erection of a suitable treatment plant.



BORIS GRESOV  
Chairman and President

May 17, 1979

*Standard Metals Corp.  
Annual Report  
1978*

<b>Kendrick Bay mineral claims:</b>	<b>1982</b>	<b>1981</b>
Mining claims and leases	\$ 220,664	\$ 220,664
Buildings, machinery and equipment	95,186	95,186
Mine development costs	1,378,331	1,362,156
	<u>1,694,181</u>	<u>1,678,006</u>
Less, accumulated depreciation and depletion	( 121,075)	( 121,075)
	<u>\$1,573,106</u>	<u>\$1,556,931</u>

This investment consists of 25 lode claims containing a former uranium-producing mine on Prince of Wales Island, Alaska. Underground and surface development drilling commenced in June 1977 and was completed by the end of 1979. Drilling was generally confined to delineating known mineral zones and trends in the immediate vicinity of the area previously mined. Current market prices of the minerals contained in the reserves are not at a level sufficient to recover the present investment, operating costs and estimated capital outlays to bring the property to an operating stage. However, in the opinion of management, current market prices may not be indicative of future prices and there has not been a permanent impairment in the value of Standard's investment. Realization of the investment in these claims is dependent upon obtaining requisite licenses and permits to mine the property and to erect a mill, and the development and production of economic reserves, or sale of the claims.

<b>Antler mine:</b>	<b>1982</b>	<b>1981</b>
Buildings, machinery and equipment	\$ 43,203	\$ 43,203
Mine development costs, net of amortization	1,664,312	1,654,456
	<u>1,707,515</u>	<u>1,697,659</u>
Less, accumulated depreciation	( 14,340)	( 14,340)
reduction in carrying value	( 382,777)	( 382,777)
	<u>\$1,310,398</u>	<u>\$1,300,542</u>

The Antler mine is an underground zinc, copper and silver mine located in Arizona. The mine was operated at a loss during 1970 and was closed in early 1971.

20n

STANDARD METALS CORPORATION

OLYMPIC TOWER  
645 FIFTH AVENUE  
NEW YORK, N.Y. 10022

Newsletter: Aug. 18, 1983

The Company said rock types and the environment at its Antler group of claims in Mohave County, Arizona could lead to a possible discovery of an economic gold deposit. Standard Metals plans to begin mapping the entire site for possible drilling targets. Drilling could begin in late 1983, if test results are favorable.

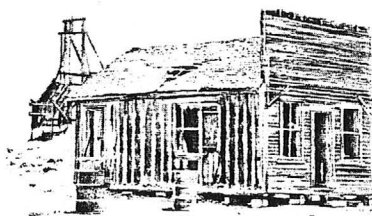
1987, there has been a moratorium on issuing new mineral leases and renewing existing ones. The uncertainty regarding the future royalty rate has been the cause of consternation for the mining industry, as well as the Department, but there is optimism that the situation will soon be resolved.

Oil and gas rental income has dropped markedly during the past 5 years as a result of the industry slump. If oil or gas were ever discovered on State land, the Trust would receive a minimum of 12 1/2 percent of the market value of the oil or gas produced.

Mineral-material royalties have grown steadily during the past 5 years. Resources in this category include sand, gravel, rock, building stone, riprap, cinders, decomposed granite, topsoil, and any other mineral material used in the construction industry. After the Land Department receives an application to purchase mineral materials, it conducts an appraisal and the material is sold at public auction to the highest bidder. Revenue is guaranteed on each lease be-

cause the company must pay an annual minimum royalty. Rentals from mineral-material operations greatly increased in 1987-88 when the department began basing the rental figure on a percentage of land value. Total revenue from the sale of mineral materials during the past 5 years is only slightly less than that received from mineral-lease royalties.

Total revenues from subsurface leasing for the current fiscal year are expected to surpass those received in 1987-88. The continuing high price of copper has allowed several companies to increase production. This is excellent news for the industry, as well as the beneficiaries of the State Trust.



## NEW AZGS PUBLICATION

The following publication may be purchased from the Arizona Geological Survey (AZGS), 845 N. Park Ave., #100, Tucson, AZ 85719. For price information on this and other publications, contact the AZGS office at (602) 882-4795.

*Welty, J.W., and Schnabel, Lorraine, 1989, Bibliography for metallic mineral districts in Gila, Maricopa, Pinal, and Yavapai Counties, Arizona: Open-File Report 89-1, 123 p.*

This report is the fourth in a series of county bibliographies for metallic mineral districts in Arizona. The others, Circulars 24, 25, and 26, were published by the AZGS in 1986. Nearly 1,600 citations are included in this compilation. The report has been open-filed to permit timely access to the public. After editing and printing, it will be released as a circular.

## AZGS Accepts BOM Diamond- Drill Core

In early March 1989, the Arizona Geological Survey accepted a donation of nearly 32,000 feet of diamond-drill core from the U.S. Bureau of Mines (BOM). The core comes from 13 separate properties across the State (Table 1). The core was shipped from the BOM Twin Cities Research Center, where it had been stored, by the Minnesota Air Guard to Davis-Monthan Air Force Base in Tucson and then trucked to the Mission Unit of ASARCO Inc., where it remains in temporary storage. We thank members of the Minnesota Air Guard; Davis-Monthan personnel; Robert Willard, BOM Twin Cities Research Center; Michael Greeley, BOM State mineral specialist; and James Litchenthian, mine superintendent at the Mission Unit; for their generosity in enabling the AZGS to accept and store this drill core. Information about the geologic setting and logs for each drill hole can be found in the references listed in Table 1. For localities with no listed references, no published information is available. Please call our office (602-882-4795) to make an appointment if you wish to examine any of this core.

Table 1. Listing of BOM diamond-drill core localities.

Mineral District	Mine Name	Commodity Sought	Total Footage <sup>1</sup>	Number of Holes	Reference <sup>2</sup>
Ajo	Copper Giant	Cu	1,400	2	Romslo and Robinson (1952)
Apache Iron	Apache Iron	Fe	1,200	15	Stewart (1947)
Artillery Peak	Maggie Canyon	Mn	3,700	69	Kumke and others (1957)
Big Bug	Iron King	Cu	600	4	n.a.
Christmas	Christmas	Cu	3,700	7	Tainter (1948)
Cochise	Keystone	Cu, Zn	10,800	18	Romslo (1949)
Helvetia	King in Exile	Cu	100	1	n.a.
Hualapai	Antler	Cu, Zn	2,100	6	Romslo (1948)
Lakeshore	Lakeshore	Cu	200	1	Romslo (1950)
Pima	Esperanza	Cu	1,450	3	Tainter (1947)
Tiger	Crown King	Cu	1,400	3	n.a.
Wallapai	Cerbat	Pb, Zn	2,800	8	n.a.
Wallapai	Civitation	Cu	3,400	6	n.a.

<sup>1</sup> Total footage is rounded off to the nearest 100 feet drilled.

<sup>2</sup> "n.a." indicates that no references are available for this core.

### References

- Kumke, C.A., Ross, C.K., Everett, F.D., and Hazen, S.W., Jr., 1957, Mining investigations of manganese deposits in the Maggie Canyon area, Artillery Mountain region, Mohave County, Arizona: U.S. Bureau of Mines Report of Investigations RI 5292, 87 p.
- Romslo, T.M., 1948, Antler copper-zinc deposit, Mohave County, Arizona: U.S. Bureau of Mines Report of Investigations RI 4214, 14 p.
- , 1949, Investigation of Keystone and St. George copper-zinc deposits, Cochise County, Arizona: U.S. Bureau of Mines Report of Investigations RI 4504, 21 p.
- , 1950, Investigation of Lake Shore copper deposits, Pinal County, Arizona: U.S. Bureau of Mines Report of Investigations RI 4706, 24 p.
- Romslo, T.M., and Robinson, C.S., 1952, Copper Giant deposits, Pima County, Arizona: U.S. Bureau of Mines Report of Investigations RI 4850, 9 p.
- Stewart, L.A., 1947, Apache Iron deposit, Navajo County, Arizona: U.S. Bureau of Mines Report of Investigations RI 4093, 88 p.
- Tainter, S.L., 1947, Amargosa (Esperanza) molybdenum-copper property, Pima County, Arizona: U.S. Bureau of Mines Report of Investigations RI 4016, 15 p.
- , 1948, Christmas copper deposit, Gila County, Arizona: U.S. Bureau of Mines Report of Investigations RI 4293, 58 p.



**Assessor Parcel Search**

Data updated Yesterday

**Enter parcel number in the format xxx-xx-xxx and press Submit.****Don't know your Parcel Number?**

Address Search	Parcel Search
----------------	---------------

**Parcel:** 244-03-001**Tax Year:** Current Year ▾

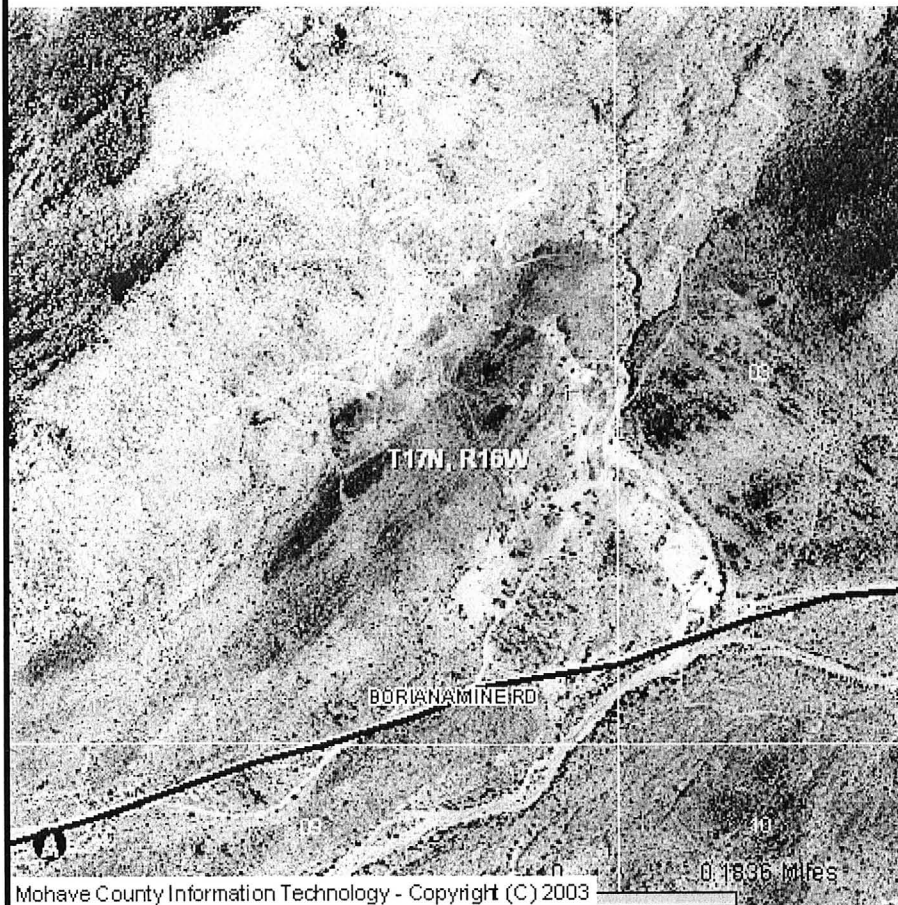
Submit Query

Reset

Parcel Information (Click for Tax Information)	
Tax Year:	2004
Parcel:	244-03-001 Click for Improvement Information
Site Address:	UNK STREET ADDRESS
Owner:	STANDARD METALS CORP GRESOV WINSTON C/O
Mailing Address:	768 COLLEGE AVE , HAVERFORD , PA 19041
Tax Area:	1300
Full Cash Value:	\$52,289.00
Assessed Full Cash Value:	\$5,450.00
Limited Value:	\$40,596.00
Assessed Limited Value:	\$4,231.00
Value Method:	Cost Model
Exempt Amount:	\$0.00
Exemption Type:	
Use Code:	6600
Property Use:	NONPRODUCING MINES
Class Code:	MIXED LEGAL CLASSES
Assessment Ratio:	10.42%
Last Sale Information (Click for more Sale Info)	
Sale Price:	0
Sale Date:	1/1/2001
Recorded Instr Type:	
Book:	0
Page:	0
Legal Description Information	
Parcel Size:	38.69 ACRES
Legal Description:	TWN: 17N RNG: 16W SEC: 4 TRACT: IN CEDAR VALLEY MINING DIST ANTLER MS 904 19.13 AC SPUYTEN DUYVIL MS 906 19.56 AC TOTAL 38.6 ACRES

E/H

## Mohave Cty GIS - Antler Mine Area



## Legend

## Streets

## Street Types

- US Highway
- State Highway
- County Road
- Arterial
- Other Paved
- Other

— LHC Streets

LHC Parcels

Bullhead City Parcels

Mohave Valley Parcels

Township and Range  
Sections

## orthos\_12

## Value

High : 255

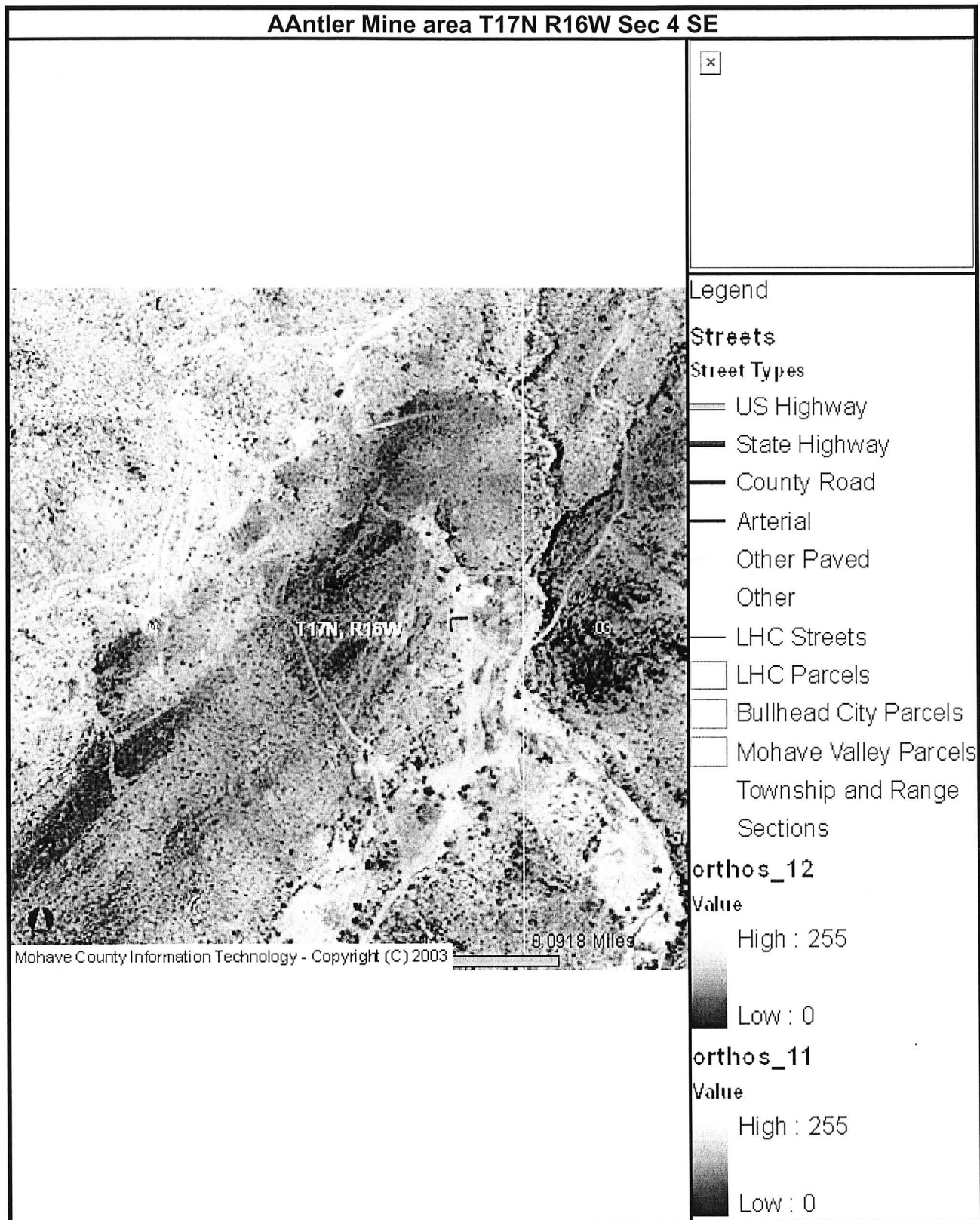
Low : 0

## orthos\_11

## Value

High : 255

Low : 0



Arizona Copper Reserves and Resources

Compiled by the  
Arizona Department of Mines and Mineral Resources

Property:

ANTLER

Also known as - Spuyten Duyvil

Operator and/or Owner:

Standard Metals Corp.  
666, 45 Rockefeller Plaza  
New York, NY 10020  
212-956-5450

Location:

Township 17 N Range 16 W Section 4  
County - Mohave AZMILS - 500A  
Description - 30 miles south of Kingman - 10 miles east of Yucca.

Mineralization type and reserve/resource:

Sulfide - 5 Million tons at 1.95% Cu

Reserve Info.: Sulfide - with 4.13% Zn, 0.94% Pb and 1.05 oz/ton Ag

Sources:

Standard Metals Annual Report 1978, p. 3

Comments:

An additional 2.5 million tons reported in 1979 Annual Report. Property now adjacent to Wabayuma Peak Wilderness.

ANTLER MINE

*Do not copy*

MOHAVE

Went to the Antler mine of the Standard Metals Co. which is still closed.  
GW WR 8/27/75

---

. There was no activity at the Antlers mine. VBD WR 9/19/76

---

MG/WR 2/9/79 - Standard Metals Corp. is looking for a joint venture partner to develop the Antler Mine. 3/2/79 a.p.

---

RRB WR 3/13/81: Jim Dawson, R.V. Lord & Associates, Architects-Engineers-Planners, 5541 Central Avenue, Boulder, Colorado 80301, phone (303) 443-0413, and 132 S. Central, Suite 207, Phoenix 85004, phone (602) 241-0888, was in. His company was contacted through a subsidiary (Mountain Minerals) to investigate the possibility of opening the Antler Mine in Mohave County.

---

*COMPILED CONDUCTED EXPLORATION WORK OF ADJACENT  
CLAIMS IN 1980'S/90'S. PROPERTY IS NEAR WABAYUMA PEAK  
WILDERNESS NOW. - NJN*

*DO NOT REPRODUCE*

MOHAVE

There is still no activity at the Antler mine of Standard Metals Company near Yucca. GW WR 3/8/73

There is no activity at the Antler mine. GW WR 12/6/73

The Standard Metals Company had several geologists and engineers re-examining the Antler mine east of Yucca to learn whether or not it would be profitable to reopen it. To date it hasn't commenced operation. GW AR 73-74

I drove to the Antlers mine where I observed two of Boyles brothers drills in operation. I talked to G. Nasello, watchman at the property, who advised: (1) Standard Metals Corporation has contracted drilling to Boyles Brothers Drilling Co. (2) Standard Metals is a solvent corporation and has been since last February (3) All electric motors, a cone crusher and some screens have been removed from the mill and shipped to Silverton. The grinding, classification and flotation units remain intact. (4) Ore reserves are being extended westward.

VBD WR 1/8/75

I drove to the Antler mill where I met Bruce James. VBD WR 4/2/75

## MOHAVE COUNTY

Visited Antler mine. Wm. Page, Mgr. out - talked to engineer in office. FTJ WR 9-4-70

Active Mine List Oct. 1970 - 50 men - William Page, Proj. Mgr.

Visited Standard Metals mill. The new manager, Allen Bird, was out of town. Office personnel said mill was shut down while mine develops more ore. FTJ WR 1-8-71

Standard Metals mill at Yucca was shut down while developing more ore at the Antler mine. FTJ QR 1-13-71

To Yucca. Antler office closed with notice of bankruptcy proceedings on door.  
FTJ WR 5-10-71

Standard Metals ceased its Antler operation and were going into bankruptcy.  
FTJ QR 4-5-71

The Antler mine and mill was idle during the year due to lack of ore and development funds. FTJ Annual Report 8-19-71

Went to Yucca and inquired in a cafe about activities at the Antler property;  
nothing new has transpired. GW WR 9/3/71

Standard Metals Corp., Antlers operation was stopped during this period. GW OR 9/71

There is no activity at either the Antler mine or Gold Road at this time. GW WR 12/7/72

There is no activity at the Antler or Gold Road. GW WR 1/4/73

## MOHAVE COUNTY

Standard Metals is reported to be about to start up. FPK Notes from field trip 5-15-69

Standard Metals Corp. were milling copper-zinc ores from the Antler mine and the Copper World mine at the rate of 250 tpd. They are prepared to take custom ore but so far such ore has not been released. FTJ Annual Report 6-30-70



ANTLER MINE

MOHAVE COUNTY

Interview with N. Hall Thorne who is resident manager. Shaft is to the 300' and work progressing satisfactorily. FTJ WR 9-8-67

---

Visited Antler mine - Hall Thorne, mgr., said they had about 100' to go in the shaft sinking operation. FTJ WR 11-10-67

---

Visited Antler mine and interviewed Hall Thorne, Mgr. Shaft is 10 feet from completion. Cross-cuts and drifting going ahead and installation of ore pockets underway. FTJ WR 1-5-68

---

Robert Pritchett has been named project engineer at the company's Antler Project near Kingman. Pritchett previously was associated with Homestake Mining Co. Mining Congress Journal 1-1968 p. 58

---

Interviewed Mr. James Hill, geologist at Antler mine. He said Centennial will have completed their contract in about a week. FTJ WR 3-8-68

---

Active Mine List Oct. 1967 - 17 men  
Active Mine List April 1968 - 15 men

Visited Antler mine. Hall Thorne said they were still on development and that the company plans to start their mill at the well site about July 1. FTJ WR 5-10-68

---

Visited Antler mine - interview with Mr. Jim Hill, geologist. They are developing and stockpiling ore. Mill expected to be under construction by September. The company is also exploring the Lawler property SW of the Old Dick mine. FTJ WR 7-12-68

---

Standard Metals - Antler mine were planning a mill to be constructed near Yucca in the first half of 1968-69. FTJ Annual Report 7-30-68

---

Visited the Antler mine. They are still developing and contemplate mill construction after Jan. 1. They also plan further exploration of the Lawler claims southwest of the Old Dick mine. FTJ WR 11-8-68

---

Visited Antler mine - Jim Hill, geologist - development work at Antler continues satisfactorily. Construction time of mill not known. FTJ WR 1-10-69

---

Visited Antler mine - still developing ore. Jim Hill, geologist, said he didn't know when mill would be started, but he thought soon. FTJ WR 3-7-69

---

\* Active Mine List April 1969 - 13 men - N. Hall Thorne, Res. Mgr.

*[Handwritten signature]*

ANTLER MINE

MOHAVE COUNTY

Visited Antler mine - no one present but about a carload of sacked fertilizer was on the platform. FTJ WR 3-4-66

---

Visited Antler mine where Standard Metals of Denver is core drilling. Arthur Still is in charge of the work. Boris Greson, Pres. Standard Metals FTJ WR 5-6-66 & Skillings 5-14-66

---

Standard Metals of Denver has been drilling the Antler property and results have been encouraging. FTJ QR 7-8-66

---

Visited Mr. Jim Hill, geologist at the Antler mine. Drilling has been suspended and a Canadian firm is doing geophysical work to try to pick up more anomalies. FTJ WR 9-9-66

---

Visited Art Still who is working on plans for the Antler mine. FTJ WR 11-18-66

---

Visited Antler mine where feasibility studies are being conducted. FTJ WR 11-4-66

---

Visited Antler mine. No personnel at property. Learned that feasibility studies are still in progress. FTJ WR 1-7-67

---

Visited Antler mine - Supt. for Centennial Development Co., Inc. Eureka, Utah, was going over the area. They will sink a 6' x 8' shaft 500' for Standard Metals. Work is to start immediately. This shaft will be for supplies, etc. A second shaft is planned for hoisting ore. A 250 tons per day mill is planned with an auxiliary ferro-fertilizer plant. Reserves are conservatively estimated to last in excess of four years. FTJ WR 3-10-67

---

Active April 1967

Visited the Antler mine. 70° incline has been cemented to the 20' level. Foundations for hoist and headframe footing have been poured and construction to follow immediately. Hall Thorne is Standard Metals representative for the work. Jim Hill continues his geologic work on the property. FTJ WR 5-5-67

---

Interviewed James Hill, geologist at Antler mine - shaft is to the 4th level 160' from collar. FTJ WR 7-7-67

---

\*



ANTLER MINE

MOHAVE COUNTY

Visited Antler mine - two men working the dump. EGW WR 11-13-62

---

Visited the Antler mine - interviewed G. H. Bivens, now running Antler's tailings. EGW WR 3-13-63

---

Visited Antler mine where 5 men were salvaging all of the underground equipment. They still have lots of tailings to work for fertilizer. EGW WR 7-17-63

---

Visited Antler mine. All equipment including the mill has been sold. Two men still sacking tailings for fertilizer. EGW WR 11-18-63

---

Active Mine List Oct. 1963 - 2 men

Mr. Joseph C. Kostolnik, 650 N. 1st Ave., Phoenix is interested in the Antler Mine south of Yucca. EGW WR 5-18-64

---

Visited Antler mine - a small Lippman crusher has been installed and dump material is being crushed and mixed with tailings and hauled to the sacking machine. Two men are working. Nelson Wirick, P.O. Box 10362, Phoenix, Arizona in charge. EGW WR 7-14-64

---

Visited Antler mine - 2 men sacking tailings. EGW WR 11-6-64

---

Visited Antler mine - bagging and shipping mill tailings. FTJ WR 7-9-65

---

Active Mine List Oct. 1965 - Nelson Wirick, P.O. Box 10362, Phoenix (lessee)

Visited the Antler mine - no one present although they are shipping American Mining & Milling Corp., have been shipping the tailings. FTJ WR 11-5-65

---

\*

~~REDACTED~~

MEMO

Feb. 24, 1961

ANTLERS MINE

T. P. Lane

Yucca Mining & Milling Co.  
Mgr., Mason Rankin  
P.O. Box 38, Yucca, Arizona

The company began rehabilitating the mine and mill in July of last year and started producing in October. The mill was shut down several days before this visit and most of the crew laid off because of a shortage of water. The capacity of the mill is around 100 TPD but because of the scarcity of water (principally) and underdevelopment in the mine it has been running only one shift per day most of the time. Grade of mill feed is said to be in the range: 8-10% Zn, 2.5-2.75% Cu, and around 1.5% Pb and 1.5 oz. Ag. The normal crew is 10 to 12 men when operating at one shift per day.

The Dalton operation which prepared and shipped out old tailings as an agricultural soil conditioner, quit during 1960. Nelson Wierck of Kingman has taken over and is preparing to resume shipments.

---

It is reported that the Antlers Mine was shut down and that the manager, Mason Rankin, had left that part of the country. A carload each of zinc and lead concentrates was shipped since my last visit (Feb. 24). This was mostly cleanup of bins and stockpiles.

TRAVIS P. LANE - Weekly Report - 3-25-61

---

ANTLERS MINE

Mohave County, Cedar Valley

Yucca Mining & Milling Co., has been running its milling plant intermittently for the last five months, handling from 400 to 600 tons of ore monthly. The ore is primarily zinc-copper with smaller values in silver, and lead. Full scale operations are said to have been handicapped by a water shortage. Ben Williams, Sr., of Douglas, Arizona, is president of the company and Mason Ranken of Yucca is manager. The mine is located in the Cedar Valley district of Mohave County, Arizona.

Taken from MINING WORLD, July, 1961

---

\*

DEPARTMENT OF MINERAL RESOURCES  
STATE OF ARIZONA  
FIELD ENGINEERS REPORT

✓  
Mine Antlers Mine (Yucca Mining & Milling Co.)

Date October 31, 1952.

District 12.mi.E. of Yucca

Engineer Geo.F.Reed

Subject: Present Status of Operation.

I stopped here the day of my trip to Borianna and thought it worthwhile to write up the up to date status of the operation. It could possibly be used as a news item.

This well known property operated by Yucca Mining & Milling Co., under the managership of Bob Dalton has been developing, mining and milling for past few years under ups and downs of metal prices and with a tough ore to mill. The ore values are chiefly copper & zinc, but the Pyrrhotite content is high which makes for rapid oxidation and trouble in mining & milling.

About 30 men are employed at present in mine & mill and production on two shifts in both mine and mill, is running about 80 tons per day. The mine is doing development work under a short form matching loan, and also mining.

✓  
The mill has been added to to increase recovery and capacity and now is quite a modern unit for a small tonnage plant. Crushing is done with a jaw crusher, followed by a cone crusher. Grinding units consist of a 4 foot by 8 foot rod mill discharging to a spiral classifier in closed circuit with a ball mill. Classifier overflow is conditioned and floated in conventional units, both Fagergren and Denver cells, including some of the latest Denver cells in the copper circuit. Concentrates go direct to leaf filters without thickening and are loaded on trucks with a front end loader on a concrete floor.

The mine is working to approximately 350 feet deep through a steeply incline shaft. Boulder Dam power is at the property, used exclusively. Ore occurs in lenses along a mineralized zone in a roof pendant of schist and gneiss. Among others, five new "pusher" type drills are used in the mine.

The operation is helped by 10¢ above market contract for copper with the government. Percentage-wise, the ore carries more than twice as much zinc as copper.

*George F. Reed*

\*

**DEPARTMENT OF MINERAL RESOURCES**  
**STATE OF ARIZONA**  
**FIELD ENGINEERS REPORT**

Mine      ✓ Antlers Mine      Date      February 14, 1953.  
District      Cedar Valley, 11 miles by road      Engineer      George F. Reed  
Subject:      East of Yucca towards Borianna.

Brief description of Present Operations.

Location & General Conditions:

✓ Antlers Copper-Zinc Mine operated by Yucca Mining & Milling Co.,  
✓ Bob Dalton in charge, is 11 miles East of Yucca on the Borianna Road at about 3200 feet elevation. They operate a flotation mill making two concentrates which are hauled to Yucca on the Santa Fe Railroad. The mine makes a few gallons of water a minute. Other water is obtained from a well at the mine in the main wash and from upstream about two miles from springs and a well. Boulder Dam Power is obtained from the Borianna Line, 44,000 volts. The mine is probably in southern part of Sec. 4, Twp. 17N, R16W.

Geology & Topography:

The mine is in the mouth of a canyon where the rolling hills change into rugged mountains. The mineralized zone is contained in a roof-pendant of schist which in turn is surrounded by granite. The general trend of the ore lenses is parallel to the schistosity and to the long axis of the pendant. The ore dips almost vertically. The ore pinches and swells, but quite commonly it may be 20 feet wide. Various silicates derived from alteration of impure limey sediments have been replaced by Pyrrhotite, Sphalerite, Chalcopyrite and lesser amounts of galena. Commonly the ore is massive sulphides and mill heads may run around 2.8% copper and 7.2% zinc.

Mining & Milling:

Mining is now being done by an inclined sub-level system. This system has the advantage that ore can be drawn as fast as blasted. The heavy percentage of Pyrrhotite makes for rapid oxidation, causing cementing of broken ore in the stopes and trouble with flotation in the mill. The mill is said to be treating about 3000 tons per month, running 24 hours seven ~~days~~ days a week. The mine is running two shifts, six days a week. Total men on the payroll is about 35. Nine men run the mill around the clock, do crushing, take care of hauling from mine to mill and tailing pile. Concentrate haul is contracted. The shaft, almost vertical, is about 340 feet deep with two levels being worked mostly along a 1000 foot length. The ore and walls stand well. Ore is difficult to make good grade copper and zinc concentrates and good recovery. Mill has jaw and cone crushers, primary 4 by 8 rod mill, 30 inch classifier (Wemco) secondary ball mill, flotation and filters.

They are said to have a \$59,470.00 matching loan, i.e. gov't puts up \$29,735. This for drifting and other development. Also have 10¢ premium on copper.

\*      100      *George F. Reed*

DEPARTMENT OF MINERAL RESOURCES

STATE OF ARIZONA  
FIELD ENGINEERS REPORT

Mine Antler Mine Date Sept. 12, 1962  
District Cedar Valley Dist., Mohave County Engineer Lewis A. Smith  
Subject: Mine Visit with "Red" Williams and Conference With G. H. Bivins and Morris Burr, Lessees from the Yucca Mining and Milling Co., of Douglas, Arizona, (Ben Williams, Agent).

Location: Sec's. 3, 4, 9, T. 17 N., R. 16 W.

Access: Follow Hwy. 66 for  $1\frac{1}{2}$  miles south from Yucca, thence turn left on the Signal Road for 4 miles, thence left at fork. Dirt road for 7 miles into the west foothills of the Hualpai Mountains (11 miles almost eastward from Hwy 66) (The road is graded.).  $1\frac{1}{2}$  miles past the Antler, generally north-eastward is the Borianna Mine.

Property: 2 patented lode claims (Antler and Spuyten Duyvil,) located in 1879 and 1888 respectively.

Owners: 1948- Owned by R. B. Strassburger of Philadelphia, Pa., optioned to Arizona Antlers Mining Co., 603 Beason Bldg., Salt Lake City.

1953- Chemical Mineral Corp., Santa Fe, N.M. operated a 150 t.p.d. flotation plant.

1962- Owned by Yucca M. & M. Co., Douglas, Arizona.  
Leased to G. H. Bivins and Morris Burr, Yucca.

History: Little or no ore produced prior to World War I.

During W.W. I, 27 cars of 5 to 12 percent copper ore shipped.

1929: Property was leased to Pete Vukoye, Kingman, who shipped 7 cars of 5-14 percent copper ore.

1943: Pete and Mike Vukoye bought property.

1944: Arizona Antlers Mining Co. acquired the property and produced 6.026 tons assaying 8.38 percent Zn, 2.43 percent Cu, 0.69 percent Pb., 0.95 oz. Silver and 0.009 oz. gold per ton.

Geology: Adequately described in U.S. Bureau of Mines, R.I. 4214 (1948) pp. 4-7.

The schist belt, about  $1\frac{1}{4}$  miles wide and 8 miles long, near the Antler Mine, trends NE and is bounded on the SE and NW by intrusive granite. The schist was divided into two units by Eldred Wilson, gray and black. The black schist contains abundant hornblende and dark mica and locally some magnetite and garnet. It has a speckled appearance except where it is largely composed of mica (greisen(?)). The gray schist is composed mainly of siliceous arkosic beds. Adjacent to faults and near the ore zone, pyrrhotite occurs in fractures in both schist types.

\* Pegmatite, mostly composed of quartz and orthoclase or microcline, intrudes the schist as dikes and lenses. Local concentrations of biotite or muscovite books are seen. These pegmatite bodies vary in width from  $\frac{1}{4}$  inch to more than a foot, and extend, in length, from a few inches to several feet.



Aplite, replaced and veined by epidote, occurs as dikes that parallel the schist laminae. These dikes are generally only a few inches wide and a few feet long.

Two types of granite occur near the mine. The first, a fine-grained hornblende granite, is a massive rock that shows definite foliation and mineral elongation parallel to the schistosity. The second, a biotite granite, verging on a quartz monzonite, is physically similar to the first granite, except that it is coarse grained.

The schistosity trends NE and dips steeply NW. The pegmatites, and aplite bodies, and the major jointing of the granite, parallel the schist laminations. Locally, the aplite and pegmatites cross the laminations, and sometimes the aplite dikes cross the pegmatites.

Two fault systems displace the schist. The older group is roughly parallel to the schistosity and off-set the second, or later, group which trend NW. The faults of the first system tend to become progressively weaker south of the Antler shaft.

The ore and associate minerals (sphalerite, chalcopyrite and galena, a small amount of bornite and some covellite) are the ore minerals. The associate minerals are mica, quartz, pyrrhotite, magnetite, anthrophyllite, tremolite, sericite, antigorite, and delessite. Chlorite and wollastonite also identified). The Cholla Fault forms footwall and the Yucca Fault forms the Hangingwall of the ore zone which is most altered schist. The contacts between the altered and unaltered schist are irregular and the altered schist commonly encloses unaltered bodies.

The ore occurs in pods and lenses that swell and pinch rapidly along the strike and dip. The maximum stope width was 2.0 feet. Above the 1st level, the ore is mostly oxidized. The vein zone shows a maximum width of 45 feet. The principal faults both dip to the SW, the Cholla at about 70 degrees and the Yucca about 50 degrees. The Yucca fault steepens in depth.

South of the Antler Shaft the veins range in width from 6 inches to 2 feet. In these, sulphides were encountered at as little as 30 feet below the surface. These veins occur along the schistosity-plane faults, belonging to the NE system. Ore mineralization encountered in drill holes in this area appears to lie within a zone bounded by the Cholla and Yucca Faults; gneiss, similar to quartz diorite was penetrated in some holes.

The schist seems to be a roof pendant, although there is some evidence that the schist block may be a graben-like mass. The cross-sections at the Boriana, along the NE extension of the schist belt, seem also to indicate this possibility.

The schist is less resistant to erosion and consequently occupies a low valley-like depression with the granitic rocks in bold relief on either side.

The present operations consist of crushing and sizing of the Antler Mine dump to 325 mesh. This is done in a Lipton Hammer Mill followed by a 5 X 15 foot drier kiln, then by shaking screens which give a 325-mesh product. The oversize is returned to the hammer mill. The fines were bagged in an automatic bagging and weighing machine. The bags weigh 101 lbs. The product is called "Ferro Soil Til" and is used for fertilizer because of the high iron and sulphur content. During August, 152 tons were shipped to California. During the past 8 years, a large tonnage of the old dump were treated and then shipped for fertilizer.

The old flotation mill consists of a Blake jaw crusher, a 4 x 8 foot Marcy Mill and a 3 x 4 Marcy Ball Mill. The rod mill used 3-inch rods and the ball mill used 1-2 inch balls. The ball mills are equipped with screw type classifiers. There are 2 sets of Denver flotation cells (6 in each set).

Reserves in 1947, as a result of the Bureau of Mines drilling program, were figured at a large tonnage ~~(200,000 or more tons)~~ containing 2.9 percent copper, 6.4 percent zinc, 0.95 oz. of silver, and 0.012 oz. of gold. The ore is in several blocks.

DEPARTMENT OF MINERAL RESOURCES  
STATE OF ARIZONA  
FIELD ENGINEERS REPORT

Mine Antlers

Date March 25, 1957

District Cedar Valley

Engineer Mark Gemmill

Subject: Present Operations

On April 12, 1956, I reported that owners of the property, Yucca Mining and Milling Co. had leased the mine to Samical Mineral Corp. The Lessee operated but a short time. A little work was done in the mine and the mill was operated a short time. It was reported that it was found unprofitable and the project was abandoned.

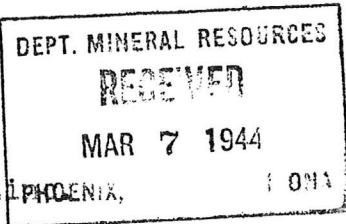
Dalton & Sons continue their fertilizer operation using the old mill tailings. It is reported that this business is doing very well.

The mine is idle.

March 6, 1944

MEMORANDUM

To: J. S. Coupal  
From: Elgin B. Holt  
Subject: Antler Mine - Pete Vukoye -  
Re- Premiums on Copper, Lead and Zinc



Mr. Pete Vukoye has just called, and has handed me the inclosed letter from Mr. M. W. Woolley regarding trouble they have had in trying to get the "B" and "C" premiums for Antler ores. That the Antler camp has been built and equipment installed all upon faith that the premiums will be granted. Woolley requests that you take this matter up with Bill Broadgate and try to get some help in this matter.

While, as you know, the Antler mine is being worked by the Silver Shield Mining and Milling Company, premiums have been applied for in the name of Pete Vukoye who is still acting as agent for all concerned in this property.

Vukoye was granted zero quotas on Antler ores, by Strobel, on copper, lead and zinc, under date of December 29, 1943.

He also states that during June, 1943, he also applied for "B" and "C" premiums on lead and zinc and for an extra premium on copper.

In answer, Strobel asked for additional information, which was furnished him by Vukoye and still later, or more particularly on January 16, 1944, Vukoye made a new application for said extra premiums, including at least four smelter return sheets, or copies thereof; but to date the said extra premiums have not been granted.

For your information, Pete says that the matter of these extra premiums was taken up by the Smelter Superintendent at Clarkdale with Dave Forrester, in August of 1943; and Forrester replied advising that shipments of ore be made to a smelter and copies of the returns furnished them and then action would be taken with a view to granting the said premiums. As you will note above, this was done by Vukoye, but still no extra premiums have been granted.

As the Antler mine cannot be operated as a shipper with "A" premiums alone, I wish you would take this matter up with Broadgate with a view to urging Strobel to grant the premiums mentioned.

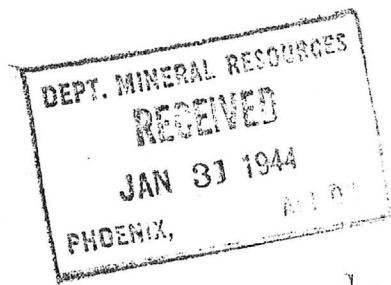
Elgin B. Holt,  
Field Engineer.

cc - Pete Vukoye  
M. W. Woolley

# PHELPS DODGE CORPORATION

UNITED VERDE BRANCH  
CLARKDALE, ARIZONA

January 29, 1944



Mr. J. S. Coupal, Director  
Department of Mineral Resources  
State of Arizona  
413 Home Builders Building  
Phoenix, Arizona

Dear Mr. Coupal:

We duly received the two samples of ore from the Antler mine which you requested Mr. Diehl to forward to us. We have had these run for copper, gold, silver, zinc and lead and I am handing you herewith assay certificate showing the analyses.

Thanking you for your courtesy in this connection,

Yours very truly,

A handwritten signature in cursive script, appearing to read "J. B. Fuller".

General Superintendent

enc

# W. H. CHILD, INC.

ESTABLISHED 1898

SALT LAKE STOCK EXCHANGE BUILDING  
SALT LAKE CITY, UTAH

MEMBER  
SALT LAKE STOCK EXCHANGE  
TELEPHONE 5-6172

Feb. 2, 1944.

Elgin B. Holt,  
Box 188,  
Kingman, Ariz.

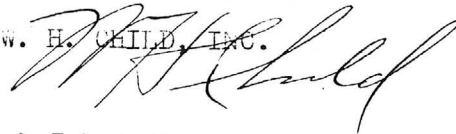
Dear Sir:

We herewith inclose you certificate No.  
A11650 for 13,500 shares of SILVER SHIELD MINING  
AND MILLING COMPANY purchased for your account  
January 28th and duly transferred to your name.

This completes the transaction, we thank  
you for the business and trust we may have the pleas-  
ure of serving you further.

Yours very truly,

W. H. CHILD, INC.



WHC:S

P. S. On second thought, I think I had the pleasure  
of meeting you at one of the meetings of the  
American Mining Congress in Los Angeles,  
California a few years ago. Are you not as-  
sociated with the Arizona Legislature or  
Arizona small mine operators? I have a faint  
recollection of meeting you.



QD-4

REL

UNITED STATES  
SECURITIES AND EXCHANGE COMMISSION

REGIONAL OFFICE  
444 SEVENTEENTH STREET  
DENVER, <sup>2</sup>COLORADO

December 21, 1943

Elgin B. Holt, Field Engineer  
Department of Mineral Resources  
State of Arizona  
Tucson, Arizona

Dear Mr. Holt:

In the course of one of our investigations in which the Antler Mine in the Maynard Mining District, Mohave County, Arizona, is concerned we are advised that you made an examination of the mine and prepared a report thereon. I should like to confirm this fact, and for the confidential information of the Commission I should like to have a copy of your report and any maps which you may have prepared in connection therewith.

You may be sure that anything you forward to this office or which you might state in regard to the property will be held in strictest confidence.

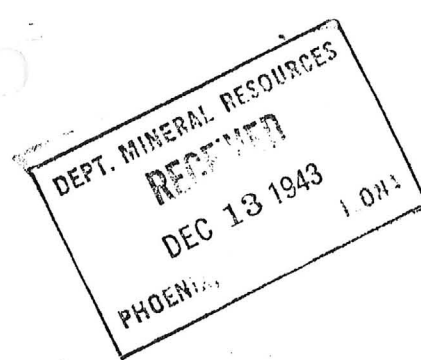
Very truly yours,

*John L. Geraghty*  
John L. Geraghty  
Regional Administrator

*Please return  
Holt.*

*London called -  
2/5/44*

December 10, 1943



MEMORANDUM

To: J. S. Coupal  
From: Elgin B. Holt

Subject: Mail copy of my report on Antler Mine, including  
blue print of cross-section map to following  
addresses:

✓ Mr. M. W. Woolley,  
Box 302,  
Salt Lake City, Utah

12-13  
PP

and

Mr. M. R. Richards,  
Silver Shield Mining & Milling Co., ✓  
501 Felt Bldg.,  
Salt Lake City,  
Utah.

12-13  
PP

*E.B.H.*



SILVER SHIELD MINING & MILLING CO.

409 HOOPER BUILDING  
SALT LAKE CITY, UTAH

11/2-43

Mr. Elgin B. Hox  
Paymaster Payson  
Dear Mr. Hox.

Enclosed find reports.

In moving we have misplaced maps  
~~photographs~~ and books. The nice books came  
and return same as far as you  
may please getting another.

Looking forward to meeting  
you soon.

Sincerely,

Wm. H. Hox  
Asst. Secretary  
Silver Shield Mining Co.

July 10, 1943

MEMORANDUM

To: J. S. Coupal  
From: Elgin B. Holt  
Subject: Antler Mine, Pete Vukoye,  
Operating with \$5000 RFC Loan

I am herewith enclosing my report on the ANTLER MINE, located 12 miles east of Yucca, Mohave County. This property, belonging to Phelps Dodge Corporation was first worked by Dr. Douglas about 1882. About the same time, or possibly later on, Dr. Douglas also worked the COPPER WORLD MINE, located higher up on the Hualpai Mountains, near Boriana. Both mines produced some tonnage of oxidized copper ore of shipping grade near the surface; but at shallow depth zinc-copper sulphide ore came in which could not be treated at that time.

Later both of these mines were patented and passed into the hands of Phelps Dodge Corporation.

Pete Vukoye and his brother Mike last winter secured a lease and option on the Antler and are now opening it up with an RFC loan. While much more work will have to be done, this property has all the ear-marks of the best large milling property that has been discovered in Mohave County for 25 or more years. Mr Wooley, of the U. S. Smelting has examined and approved this mine. I understand he claims an average value of their engineer's sampling to be: Zinc 11.0%, copper 2.4% and lead 1.5%, with \$2 or \$3 in gold and silver.

I also understand that Wooley claims the value of the ore if shipped to Midvale, with charges of \$3.00 for milling, \$4.95 railroad freight from Yucca, 75¢ trucking and \$4.00 mining costs, would yield a net of \$14.44 per ton; but he got this by figuring maximum bonuses for zinc, copper and lead, and it is doubtful if WPB would grant such an arrangement, as they are keeping their hands on the throttle, and are quite fixed in their ideas not to let the shipper make any money, if they can prevent it.

It is my idea that this property should be developed in a large way and then a selective flotation mill should be installed, whereby a three-way concentrate could be made, as the Callahan Company is doing at Washington Camp.

\* As Dye & Bathrick have secured an RFC loan to open up the Copper World, and as the ores of both properties are almost identical, a mill located at the Antler mine could treat ores from both properties nicely. Suggest you pass a copy of this letter and also a copy of my report on to Mr. Gohring for his information.

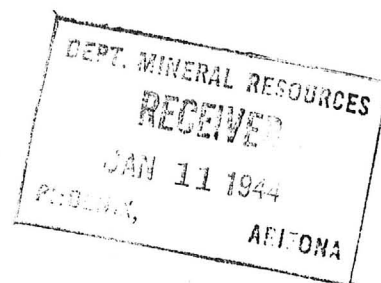
Elgin B. Holt,  
Field Engineer.

~~cc - Pete Vukoye~~

January 9, 1943

MEMORANDUM

To: J. S. Coupal  
From: Elgin B. Holt  
Subject: Antler Mine.



I visited the Antler Mine, in company with Nebecker, on January 6th, having delayed my visit until that time in hopes some cross-cutting had been done in the 50-foot winze.

The Superintendent, Kenneth O. Watkins, operating the mine for the Silver Shield Mining Company, of Salt Lake City, informed me that he had been busy installing a headframe, machinery, buildings, etc., and had not started work in the winze at all, which was blocked by an ore pocket, and hence I could not go down the same.

Watkins had cleaned out the N. E. drift, on the cross-cut tunnel level, and 112 feet N. E. of the said cross-cut tunnel he had run a cross-cut into the hanging wall exposing 8 feet of solid chalcopryite ore, he said would average 8% copper. Here I cut one sample, and another where the said cross-cut tunnel cuts 32 feet of zinc-copper sulphide ore. These samples I am sending to Charlie Diehl, of Phoenix, with instructions to mail results to you, including his charges, copy of results to me.

Watkins also told me that Dr. Rieber, Geologist for Phelps Dodge, had been at property ten days before my arrival. So he has made his own investigations.

SECURITIES & EXCHANGE COMMISSION, 444 Seventeenth St., Denver, Colorado, wrote me the enclosed letter, asking for a copy of my report and map concerning the Antler mine. Kindly comply with their request.

NOTE: Watkins shipped one car from the zincy ore to Midvale, with following results: Tons, 47.5; Ag, 1.5 ozs.; Au, none; Cu, 2.7%; Pb, 1.15; Zn, 7.85%; Fe, 34.6%; SiO<sub>2</sub>, 20.1%; CaC, 0.3%.

Elgin B. Holt

March 2, 1944

P. O. Box 188,  
Kingman, Ariz.

Mr. R. B. Strassburger,  
Times-Herald,  
Norristown, Pa.

Dear Mr. Strassburger:

Under separate cover, I am mailing you the February MINING JOURNAL containing an article by myself concerning the Antler mine, in which you are interested.

As this property is located in my district, I am very much interested in its development. Hence, if I can in the future be of any service to you, please do not hesitate to call on me.

Very sincerely yours,

Elgin B. Holt,  
Field Engineer.

P. O. Box 8,  
Kingman, Ariz.,  
Feb. 4, 1944.

W. H. Child, Inc.,  
Salt Lake Stock Exchange Bldg.,  
Salt Lake City, Utah.

Gentlemen:

I am pleased to acknowledge receipt of your letter of February 2nd, inclosing stock certificate No. A11650 for 13,500 shares of SILVER SHIELD MINING & MILLING COMPANY, which you purchased for my account, etc.

Many thanks.

I note what you say about meeting me some years ago at a meeting of the American Mining Congress. Possibly you may have met me in Salt Lake City at a meeting of the Congress during 1939, which I attended.

For your information, I am Field Engineer for the Arizona Department of Mineral Resources, with headquarters here in Kingman.

You may have seen a report by me on the Antler mine, for our Department; said report being dated Sept. 9, 1943, in which I spoke favorably of this property.

For your information, I have just completed a feature article on the Antler mine for the Mining Journal, Title & Trust Building, Phoenix, Arizona; and which was mailed to the Journal yesterday. It will be published either on February 15 or 29, 1944, with one or more illustrations. In this article, I have also spoken highly of the property.

However, I have recently, or in the last day or two, heard very disquieting stories about the Silver Shield company. And I am writing you for confidential information about the financial status of this company.

These stories are as follows: That the Silver Shield company has so far met its monthly payrolls; but have stood off several mercantile bills here in Kingman, which is not so good. Four car loads of ore were shipped from Antler during January, three to Midvale and one to the Clarkdale smelter. That Silver Shield will in future depend on these shipment, plus stock sales to keep operations going. If the company is going to depend on making money from ore shipments, I do not think it can make the grade. The mine needs considerable capital with which to develop it in a large way and then install a selective flotation mill at the property, before any great amount of money can be realized - net money, I mean.

ANTLER MINE

Therefore, I am herewith returning the said stock certificate, indorsed by me, with the following instructions, to-wit:

Kindly investigate the financial status of the Silver Shield company. If you find that this company is financially responsible to meet operating expenses for a period of four months, without depending on either stock sales or on ore shipments, then and in that event, kindly return the said stock certificate to me.

Otherwise, please sell this certificate at once, or as soon as possible, and remit net proceeds to me, after deducting your commissions.

I would certainly like to have an interest in any adequately financed company that may take over the operation of the Antler mine; for in my opinion has all the earmarks of a large tonnage milling proposition in the making.

On the other hand, the Antler is not a poor man's mine. Much money must be poured in to it before any great amount of net cash returns may be expected.

Trusting you will hold the contents of this letter in strictest confidence, and with very kind regards, I am

Sincerely yours,

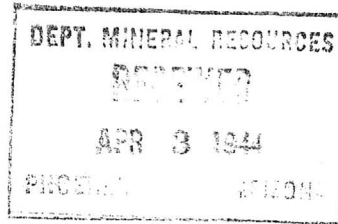
Elgin B. Holt.

March 22, 1944

MEMORANDUM

TO: BILL BROADGATE

FROM: J. S. COUPAL



SUBJECT: Pete Vukoye, Antler Mine, B Premium, zero lead

Regarding your memo on this subject, I will say that Holt was in and he showed it to him and we looked up the following information:

Antler Mine Surface Ores:

1.5 oz. Gold  
2.7% Copper  
1.15% lead  
7.85 % Zinc

On ores from the new crosscut being driven the following:

4.8% Copper  
7.2% Zinc  
No determination on lead

I do not know whether the B premium with zero quota on lead will be of any value but I imagine every little bit helps .

I have not checked to find out just exactly what quotas they have on zinc, but it would seem as though the application should have been on Copper and Zinc as lead is very secondary.

J. S. Coupal

JSC:JES

As far as I know, Vukoye got everything he asked for.  
Probably the B on lead was the only advance he could make.

Bill Broadgate

# DEPARTMENT OF MINERAL RESOURCES

## REPORT TO OPA ON ACTIVE MINING PROJECT



### Filing Information

File System.....

File No.....

This chart to be used for gallons of gasoline required per month.

Date February 17, 1945

Name of Mine Antler Mine

Owner or Operator Arizona Antler Mining Co.

Address Phillips C. Reynolds  
70 El Lavadero Blvd. Kingman, Ariz.

Mine Location Yuma, Arizona

### PRESENT OPERATIONS: (check X)

Production ☒; Development.....; Financing.....; Sale of mine.....;

Experimental (sampling).....; Owner's occasional trip.....;

Other (specify).....

### PRODUCTION: Past and Future.

Tons

Approx. tons last 3 months 1500

Approx. present rate per 3 months 1500

Anticipated rate next 3 months 3000

If in distant future check (X) here .....

### EQUIPMENT OPERATED:

Type	Quantity or Horse Power	Miles or Hours Per Month	Gallons Required Per Month
Personal Cars	<u>One</u>	<u>1500</u>	.....
Light or Service Trucks	<u>None</u>	.....	.....
Ore Hauling Trucks	<u>None</u>	.....	.....
Compressors	<u>None</u>	.....	.....
Other Mine or Mill Eqpt.	<u>None</u>	.....	.....

### PRODUCT PRODUCED OR CONTEMPLATED: Name metals or minerals.

### REMARKS:

.....  
.....  
.....  
.....

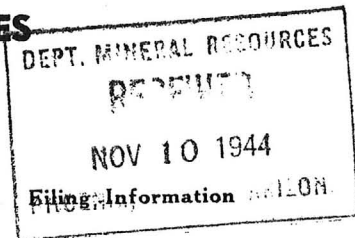
ARIZONA DEPARTMENT OF MINERAL RESOURCES

By [Signature]



# DEPARTMENT OF MINERAL RESOURCES

## REPORT TO OPA ON ACTIVE MINING PROJECT



Date.....November 8, 1944.....

Name of Mine.....Antler Mine.....

Owner or Operator.....Contractor: D. J. Despain.....

Address.....Box 67, Yucca, Ariz.....

File System.....

File No.....

This chart to be used for gallons of gasoline required per month.

Mine Location.....12 miles easterly direction from Yucca, Mohave Co.....

### PRESENT OPERATIONS: (check X)

Production ☒; Development.....; Financing.....; Sale of mine.....;

Experimental (sampling).....; Owner's occasional trip.....;

Other (specify).....

### PRODUCTION: Past and Future.

Tons

Approx. tons last 3 months.....700 tons.....

Approx. present rate per 3 months.....500.....

Anticipated rate next 3 months.....500.....

If in distant future check (X) here.....

### EQUIPMENT OPERATED:

Type	Quantity or Horse Power	Miles or Hours Per Month	Gallons Required Per Month
Personal Cars	1	1000 miles	66
Light or Service Trucks			
Ore Hauling Trucks			
Compressors			
Other Mine or Mill Eqpt.			

PRODUCT PRODUCED OR CONTEMPLATED: Name metals or minerals. Copper, lead and zinc.

REMARKS: Applicant has entered into a contract, with the Arizona-Antler Mining Co., to operate the Antler Mine, take out ore and transport the same to Yucca, for shipment to Midvale, Utah, or to Clarkdale Smelter, Arizona.

Requests 198 gallons of gasoline for his personal car for next 3 months

ARIZONA DEPARTMENT OF MINERAL RESOURCES

By

*George B. Hest*

January 31, 1944

My dear Elgin:

Mr. Willis has not returned from Denver, but is expected home tomorrow.

Miss Moore said to tell you that we would be very glad to have the story and photos.

Hope everything is moving along nicely in your part of the country.

Mr. Willis undoubtedly will write, but there is quite a bit of mail awaiting his attention.

Hoping to receive the story and photographs soon,  
I am

Sincerely,

A handwritten signature in cursive script, appearing to read "Mae".

UNITED STATES DISTRICT COURT  
SOUTHERN DISTRICT OF NEW YORK

In the Matter

-Of-

STANDARD METALS CORPORATION

Debtor

71 B 206

NOTICE OF ENTRY OF ORDER  
: OF CONFIRMATION

# NOTICE TO FILE CLAIMS

TO THE CREDITORS OF THE ABOVE NAMED DEBTOR:

PLEASE TAKE NOTICE, that the debtor's arrangement in the above entitled proceeding has been confirmed by order of this court made and entered on September 11, 1973.

Creditors who have not filed proofs of claim prior to confirmation, but who have been listed in the schedules filed by the debtor, may file proofs of claim at the office of the undersigned Referee in Bankruptcy at United States Court House, Foley Square, New York, N.Y. 10007 on or before October 11, 1973. Such claims shall not be allowed for an amount in excess of that set forth in debtor's schedules.

Upon failure to file proofs of claims as herein provided, such claims shall be disallowed and barred.

DATED: NEW YORK, NEW YORK  
September 11, 1973

EDWARD J. RYAN  
Referee in Bankruptcy

\*

Phoenix, Maryland

Oct. 27, 1944.

Mrs. Elgin B. Holt,  
Kingman, Arizona.

Dear Sir:

In the February 29th issue of the Mining Journal you had an article on the Antler Mine in Mohave County. Since it was written, a new company has been formed in place of the Silver Shield Management. Being a stockholder in Silver Shield and being interested in the new company forming, I would thank you, if you can give any new information you have or have secured since your article.

If at any time you can give another article on the progress being made at the mine, it would be appreciated.

Very truly yours,

August J. Bechtold.

March 30, 1944

MEMORANDUM



To: J. S. Coupal  
From: Elgin B. Holt  
Subject: Antler Mine, Pete Vukoye, Kingman, Arizona.  
Re- Premiums on Copper and Zinc.

Day before yesterday, I had a talk with Mr. M. W. Woolley and Pete Vukoye regarding premiums on ores from the Antler mine.

Mr. Woolley stated he has paid Phelps Dodge in full for this property and has arranged with a new crowd to finance new development on it. However, that all the premiums will have to be arranged for zinc and a special premium for copper in the ore before any operating profit can be made.

Woolley was in your office a few days ago, but you were absent. He wants you to take this matter up again with Broadgate. Woolley says he will also write Strobels about it.

Pete Vukoye called on me today and left on my desk a certificate from Landon F. Strobels establishing the following quotas and premiums on Antler ores, to-wit:

Name of Mine (a)	Class of Quota (b)	Effective Date (c)	Tons Metal		
			Zinc (d)	Lead (e)	Copper (f)
Antler	Revised				
	A Quota	1-1-44	0	0	0
	B Quota	1-1-44	40*	0	-

Note: 40\* - Vukoye says that 40 tons of metallic zinc must be shipped monthly before the B Quota applies on zinc.

In other words, Woolley wants a C Quota on zinc and an EXTRA premium on copper. That unless this is arranged, the property cannot be operated profitably as a shipper. Did not say just how much he would need on copper, but it would be my guess he should have anywhere from 7¢ to 10¢ extra on that metal.

As the Antler mine is an important potential source of copper and zinc, I strongly recommend that these extra premiums be granted, if possible.

*Elgin B. Holt*

Elgin B. Holt,  
Field Engineer

cc - Pete Vukoye, Kingman, Arizona  
M. W. Woolley, Box 1980, Salt Lake City, Utah

Name of Mine or Prospect:	Township	Range	Section	Priority												
Antler Mine	17N	16W	4 add	B												
Principal Minerals:	1:250,000 Quad		7.5' - 15' Quad													
Galena, Chalcopryrite, Sphalerite	Prescott		Wabayuma Peak													
Associated Minerals:	District		Principal Product													
Mica, Quartz, Pyrite, Magnetite	Cedar Valley		Zinc, Copper, Lead													
Type of Operation:	County	State	Type of Deposit													
Underground	Mohave	Ar.	Vein													
Ownership or Controlling Interest: Standard Metals Corp., Denver, Co. (1979)																
Access: From Yucca proceed 12 miles east on Mackenzie Wash Road, mine is shown on topographic quadrangle.																
Structural Control or Geological Association: "Sphalerite, chalcopryrite, and galena in massive sulfide replacement bodies and as open space vein infilling material in NE trending zones which are parallel to the schistosity of the enclosing Precambrian schist-ore shoots are closely related spatially to pegmatite." <sup>1</sup>  "The veins varied in width from a fraction of an inch to 12.75 ft." <sup>3</sup>  "Similarities noted between United Verde and Old Dick deposits. Potential for massive sulfide mineralization in poorly exposed portion of roof pendant, SW of mine." <sup>4</sup>																
Age of Mineralization: Precambrian																
Production History		Geochemical Analyses														
Cedar Valley District figures  Discovered 1879 Lead 1935-1956 250-500 tons Zinc 1945-1954 5000 tons Copper 1918 27 car loads Patented claims Book #205 MS #904		Copper average 1918 6-12% copper per ton  <u>Assay<sup>5</sup> (1947) 28 samples</u>  Averaged from table 1 (Romslo (1948)). Copper 3.12% Zinc 6.057% Lead 0.714% Gold .0016 oz/ton Silver 1.058 oz/ton  <table border="1"> <thead> <tr> <th>Sample ID</th> <th>Tin (ppm)</th> <th>Tungsten</th> </tr> </thead> <tbody> <tr> <td>81cj29A</td> <td>14</td> <td>2</td> </tr> <tr> <td>29B</td> <td>5</td> <td>5</td> </tr> <tr> <td>32</td> <td>18</td> <td>&lt;1</td> </tr> </tbody> </table>			Sample ID	Tin (ppm)	Tungsten	81cj29A	14	2	29B	5	5	32	18	<1
Sample ID	Tin (ppm)	Tungsten														
81cj29A	14	2														
29B	5	5														
32	18	<1														
References																
1) ABM (1969), Bull. 180, p. 183-205. 2) ADMR files, Phoenix, Ar. 3) Mallach (1977), p. 13-14. 4) Liggett (1979), Field reconnaissance 5) Romslo (1948), 14 p. 6) Exploration Research Associates Incorporated, 1982, Memorandum to William H. Crutchfield, Jr., 8 June 1982																

March 2, 1944

P. O. Box 188,  
Kingman, Ariz.

Mr. R. B. Strassburger,  
Times-Herald,  
Norristown, Pa.

Dear Mr. Strassburger:

Under separate cover, I am mailing you the February MINING JOURNAL containing an article by myself concerning the Antler mine, in which you are interested.

As this property is located in my district, I am very much interested in its development. Hence, if I can in the future be of any service to you, please do not hesitate to call on me.

Very sincerely yours,

Elgin B. Holt,  
Field Engineer.



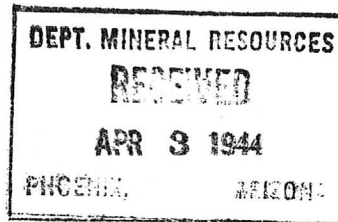
March 22, 1944

MEMORANDUM

TO: BILL BROADGATE

FROM: J. S. COUPAL

SUBJECT: Pete Vukoye, Antler Mine, B Premium, zero lead



Regarding your memo on this subject, I will say that Holt was in and he showed it to him and we looked up the following information:

Antler Mine Surface Ores:

1.5 oz. Gold  
2.7% Copper  
1.15% lead  
7.85 % Zinc

On ores from the new crosscut being driven the following:

4.8% Copper  
7.2% Zinc  
No determination on lead

I do not know whether the B premium with zero quota on lead will be of any value but I imagine every little bit helps .

I have not checked to find out just exactly what quotas they have on zinc, but it would seem as though the application should have been on Copper and Zinc as lead is very secondary.

J. S. Coupal

JSC:JES

As far as I know, Vukoye got everything he asked for.  
Probably the B on lead was the only advance he could make.

Bill Broadgate



MEMORANDUM

February 2, 1944

TO: ELGIN B. HOLT

FROM: J. S. COUPAL

SUBJECT: ANTLER MINE, HOLT SAMPLES

The samples taken by you of the Antler Mine were sent to the Phelps Dodge Corporation and they have given us the following assays:

Cu	Ag	Au	Zn	Pb
NO.1				
2.87	0.96	Tr	7.4	0.5
NO.2				
5.96	0.66	0.01	6.9	Tr

Yours very truly,

J. S. Coupal  
Director

JSC:JES

ANTLER MINE

CONFIDENTIAL

Kingman, Arizona,  
February 3, 1944.

Dear Charlie:

I am herewith inclosing a write-up of the Antler mine, with letter explaining about the snap shots.

I am just a little afraid the Silver Shield Company is a fly-by-night outfit; but I hope I am wrong.

Here is the dope:

On reaching the mine last Monday, I talked to Alfred Strong Lewis, who is working at the Antler.

Asked him for the "low down" on the property. He answered, this outfit is operating on the creditors money. Stated while the payrolls had been met to that date, the company was in debt for machinery and supplies in Kingman.

Watkins, the Superintendent, also told me practically the same thing; but seemed confident his company would pull through. The stock of Silver Shield is quoted on the stock market at Salt Lake City at 3- $\frac{1}{2}$  cents per share; and pay-roll money may or may not be met from stock sales.

I was in hopes the Silver Shield company would lay out a comprehensive plan of mine development; but such is not the case. Watkins said he is cross-cutting from the 47-foot level of the shaft - that is 47 feet below the cross-cut tunnel and main haulage level; and as soon as he reached the hanging wall of ore shoot, he would drift both ways on the vein.

To prove the mine out, the shaft should be sunk 200 or 300 feet deep, with levels each hundred feet.

I hardly believe this mine can be made pay from shipping ore alone, unless all premiums can be secured on copper, zinc and lead. Understand only "A" premiums have been granted; but the extra premiums have been applied for.

Frank Nelson, who is a friend of M. W. Woolley, told me that Woolley had a lot of stock in Silver Shield and that he would arrange about \$60,000 of new finances for this company. Another story is that Woolley is going to let Silver Shield stew in its on fat and if this company fails he will carry on the work at Antler some other way.

As you perhaps know, Nelson and Woolley put over the Antler deal with Strassburger, and with the Silver Shield company. But as Woolley is working for U. S. Smelting, he must stay in the background.

Should you mail a copy of my write-up to anyone for checking, better mail it to Kenneth O. Watkins, Yucca, instead of to the Silver Shield company, as Watkins stated his company is not prone to answer letters, even from him.

February 3, 1944

MEMORANDUM

To: The Mining Journal  
From: Elgin B. Holt  
Subject: Feature write-up of Antler Mine, Mohave County

I am herewith mailing a feature write-up of the Antler mine, as per my letter of January 28th.

Under separate cover, I am also mailing yourselves a roll of films, with four snap shots of this mine, as follows:

- No. 1 - Close-up view of cross-cut tunnel, with part of Antler crew in foreground.
- 2 - General view of Antler mine workings, showing head-frame above shaft, mine buildings, etc. Time 1/25 sec.
- 3 - Same as No. 2. Time 1/50 sec.
- 4 - View of Antler camp buildings - boarding house, etc.

I could not get these films developed here; so kindly attend to this matter and pick out one or two of the pictures for publication with the write-up.

Thanks.

Elgin B. Holt.

ANTLER MINE

MOHAVE COUNTY  
MAYNARD DIST.

Visited Iron King mine. The operations were at the normal rate. I obtained information regarding the analysis and volume of the tailings currently going out of the mill. This information is for Jim Stevens (J. L. Stevens, 3442 N. 16th Drive, Phoenix) in connection with his survey of the possibilities for using certain copper mill tailings with high iron and sulfur content to make an agricultural soil conditioner. I learned that Dalton has resumed shipments of "Soil Til" (tailings from the Antler Mine). This has been a very lucrative business but is coming to an end because of exhaustion of the tailings pile. Mr. Dalton has persuaded Iron King to make a scavenger iron concentrate for him for blending with other material to produce soil conditioners. Dalton apparently works closely with American Guano Corp. Iron King has made and is holding for him 100 tons of concentrates with contents approximately as follows:

0.12 oz.	Au
1.7 oz.	Ag
46.0%	S
38.5%	Fe
1.5%	Pb
4.9%	Zn

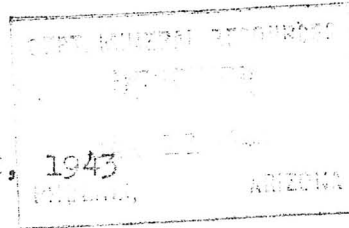
No arsenic assay is available but it was stated that this would probably be under .5%. Current mill tailings (about 800 TPD) assay about as follows:

.05 oz.	Au
.68 oz.	Ag
15.70%	Fe
14.70%	S - - - - (probably low)
.58%	Pb
1.70%	Zn
.10%	Cu

TRAVIS P. LANE - WR - 1-9-60

---

Jan. 9, 1943



P. O. Box 188,  
Flagman, Ariz.

Mr. Chas. A. Diehl,  
315 North 1st St.,  
Phoenix, Arizona.

Dear Charlie:

By Parcel Post I am sending you two samples for assay  
from the Antler Mine, of this county.

Kindly assay these samples for: Gold, silver, lead, copper  
and zinc.

Please send your bill to our Phoenix office, with dupli-  
cate certificates attached and copy of assays to me here in  
Flagman. Also mark on the certificate: "From Antler Mine."

Thanks.

Very sincerely yours,

Elgin B. Holt.

cc - J. S. Coupal

Jan. 9, 1943

P. O. Box 188,  
Kingman, Ariz.

Subject: Antler Mine, Yucca, Arizona.

Securities & Exchange Commission,  
444 Seventeenth Street,  
Denver, Colorado.

Attention: Mr. John L. Geraghty,  
Regional Administrator

Gentlemen:

Attention is called to your letter of Dec. 21, 1943, asking for my report and any maps made by me on the Antler Mine, near Yucca, Arizona.

I am advised that I am today writing our Phoenix office, enclosing your letter and asking that the said report and a sketch map by me be mailed yourselves, as requested.

The report, however, is preliminary in character, as I made no formal examination of this property. However, the mine has all the ear-marks that it will develop into a worth-while property; but further work is needed to prove the importance of the same.

For your information, I again visited the Antler mine last week, at which time, the superintendent in charge of the work gave ourselves the results of the first shipment of ore from the mine to the Midvale, Utah, smelter; results being, as follows: Tons shipped, 47.5; Ag, 1.5 ozs.; Au, none; Cu, 2.7%; Pb, 1.15%; Zn, 7.85%; Fe, 34.6%; Mn, 20.1%; CaO, 0.31.

Also, for your information, active development work is now progressing at this property.

Very sincerely yours,

Elgin B. Holt,  
Field Engineer.

cc - J. S. Coupal

September 13, 1943

Mr. Pete Vukoye  
Box 482  
Kingman, Arizona

Dear Mr. Vukoye:

At the request of Mr. Elgin B. Holt,  
field engineer, we are enclosing copy of his  
report and sketch map on the Antler Mine.

Yours very truly,

J. S. Coupal, Director

JSC:LP  
Enc.

Jan. 28, 1944

P. O. Box 188,  
Kingman, Ariz.

Silver Shield Mining & Milling Co.,  
409 Hooper Building,  
Salt Lake City, Utah.

Gentlemen:

In the event you should be interested in purchasing a complete 200-ton flotation mill for your property, the Antler mine, near Yucca, Arizona, I am writing to advise that there is such a mill located at the Red Cloud mine, 40 miles north of Yuma.

This plant was built by the Penn Metals, Inc., during 1940, and consists of the following units, and other equipment:

One 45,000-gallon water tank, one 200-ton ore bin, one 15" by 36" jaw crusher, two gyratory crushers, one 5' by 10' ball mill in closed circuit with rake classifier, one 8-cell, No. 21, 38" by 38" Denver Sub-A Fahrenwald flotation machine, with 4 motors, etc., followed by one Air flotation machine for cleaning concentrates,; also much other equipment, such as conditioning tank, conveyors, reagent feeders, pumping plant, belts, piping, pulleys, etc.

Power plant consists of two Diesel engines, 150-HP each, direct connected to two generators, switchboards, motors, etc.

As this plant is so designed to produce a bulk flotation product, additional equipment would have to be added thereto in order to change it over to a selective flotation plant that would be suited to Antler ores. If interested, suggest you get in touch with the owner of the mill referred to: Mr. Walter D. Riley, Yuma, Arizona. The said mill can be purchased at a bargain price for cash. Mr. Woolley knows the mill mentioned.

Very sincerely yours,

cc - Walter D. Riley  
A. W. Woolley

Elgin B. Holt,  
Field Engineer.



Jan. 28, 1944

P. O. Box 188,  
Kingman, Ariz.

Dear Charlie:

I have decided to prepare a short feature write-up of the Antler mine, near Yucca, to be submitted for publication in the Mining Journal, in the February 15th or 30th issue.

I will go out to the property again Monday, January 31st, in order to get further data and take some pictures; and should have the article in the mail to you by February 4th or 5th. Suggest you write me advising whether you can use this article or not, so I can get your answer sometime next week.

As I told you, the company now operating the mine is the Silver Shield Mining & Milling Company, of Salt Lake City. The Manager, or Superintendent, of the mine is Kenneth C. Watkins. I saw him a day or so ago and he said he had discovered a lot of new copper sulphide ore in what is known as the "north cross-cut". This crosscut was 8 feet in length when I was last there all in solid chalcopryrite; but Watkins said he continued the cross cut 8 or 10 feet further in chalcopryrite and had not reached the hanging wall.

Trusting you and Sam had a nice trip to Denver and with kind personal regards, I am

Very sincerely yours, .

Elgin B. Holt.

The article will have about two pages, or two and a half pages, and one or two illustrations.

# ASSAY CERTIFICATE

1-28-44

19

NP

1-28-44

DESCRIPTION

Cu

Ag

Au

Zn

Pb

V Young

No. 1

2.87

0.96

Tr.

7.4

0.5

2

5.96

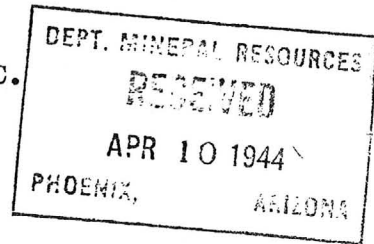
0.66

0.01

6.9

Tr.

Washington, D.C.  
April 7, 1944



SUBJECT: Premiums, Antler Mine

I have discussed this matter with both the quota crowd and the zinc section.

The premiums permitted certainly were OK according to the data submitted, and will have to stand unless that data is changed.

This outfit probably did not know what their costs really would be when they filed, and like so many, overestimated the amount of production possible, and underestimated their costs. The Quota Committee gave them a break by upping the costs a little on analysis, at that.

Now that they know more, the proper thing is for them to file for a revised quota with proper figures on actual performance, and I have been assured that they will get a break on a revision.

Bill Broadgate

~~Vukoye is right that 40 metallic tons must be shipped before the premium is paid, but they must make 40 metallic tons before~~

Vukoye is right that 40 metallic tons must be shipped before they can be paid on the B-40. Furthermore, deficiencies can accumulate. But on their own application figures, this was OK.

April 12, 1944

Mr. Pete Vukoye  
Kingman  
Arizona

SUBJECT: Premiums, Antler Mine

Dear Mr. Vukoye:

I have received a memorandum from Bill Broadgate in Washington regarding our correspondence on advance premiums for the Antler Mine and quote him as follows:

"I have discussed this matter with both the Quota crowd and the zinc section.

"The premiums permitted certainly were OK according to the data submitted, and will have to stand unless the data is changed.

"This outfit probably did not know what their costs really would be when they filed, and like so many, overestimated the amount of production possible, and underestimated their costs. The Quota Committee gave them a break by upping the costs a little on analysis, at that.

"Now that they know more, the proper thing is for them to file for a revised quota with proper figures on actual performance, and I have been assured that they will get a break on a revision."

From this you can see that, if you are in a position to show at this time a statement or break down of your costs and your production, convincing them that an upward revision is necessary, it might be possible to get it. If you make such an analysis and forward it to the Quota Committee together with a copy to me, I will take the matter up with Broadgate in Washington and have him try to follow through.

Very truly yours,

J. S. Coupal, Director

JSC:JES  
cc-E. B. Holt

Nov. 4, 1944

Antler Mine - Personal

P. O. Box 188,  
Kingman, Ariz.

Mr. August J. Bechtold,  
Phoenix,  
Maryland.

Dear Mr. Bechtold:

Attention is called to your letter of October 27th, in which you mention the article I wrote and which was published in the Mining Journal February 29, 1944.

I note you say a new company has been formed in place of the Silver Shield Management. That you are a stockholder in the Silver Shield and also interested in the new company forming. That you would thank me if I can give you any new information I may have secured since the time of my article.

Also, I note your suggestion if I can write another article about this property, it will be appreciated.

In the article you refer to, I stated in part:

"By and large, the Antler property has all the earmarks of a large-tonnage mine in the making. However, a great deal of money will be needed with which to develop it in a large way, block out ore, and erect a proper treatment plant at property, before any great amount of net cash returns may be expected."

I have no reason now to change the above opinion. But as you probably know, the Silver Shield Company took this property over in 1943, put up a little money and tried to make it pay by shipping ore to Midvale, Utah. They not only failed, but created bad debts here, only a part of which have been paid. Later, Dr. F. F. Hintz assumed control and started up again, and again tried to make the mine pay by shipping ore. I understand this attempt was also a failure; but have not the details. So unless the people who control this property finally wake up and go to the bat along the lines mentioned in my article, and above quoted, it is my opinion they will continue to fail to show a profit.

I request that you consider this letter confidential in every way.

Very sincerely yours,

Elgin B. Holt

MEMO

Feb. 24, 1961

ANTLERS MINE - *Antlers Mine Property*

T. P. Lane

Yucca Mining & Milling Co.  
Mgr., Mason Rankin  
P.O. Box 38, Yucca, Arizona

The company began rehabilitating the mine and mill in July of last year and started producing in October. The mill was shut down several days before this visit and most of the crew laid off because of a shortage of water. The capacity of the mill is around 100 TPD but because of the scarcity of water (principally) and underdevelopment in the mine it has been running only one shift per day most of the time. Grade of mill feed is said to be in the range: 8-10% Zn, 2.5-2.75% Cu, and around 1.5% Pb and 1.5 oz. Ag. The normal crew is 10 to 12 men when operating at one shift per day.

The Dalton operation which prepared and shipped out old tailings as an agricultural soil conditioner, quit during 1960. Nelson Wierck of Kingman has taken over and is preparing to resume shipments.

\*

*Antler*

April 4, 1944

Mr. Pete Vukoye  
Kingman, Arizona

Dear Mr. Vukoye:

There seems to be some little confusion regarding your premiums and I have a memorandum from Bill Broadgate in Washington stating "as far as I know Vukoye got everything he asked for. Probably the B premium on lead was the only advance that could be made.

If your applications for premiums were on hand before November 1 on lead and zinc and before January 1 on copper, you might get a reconsideration. I hope we will be able to clear this situation up for you but it will be necessary to know when the original applications for advanced premiums were made.

Very truly yours,

J. S. Coupal  
Director

JSC:JES  
c,c, E. B. Holt

MEMORANDUM

TO: BILL BROADGATE

APRIL 5, 1944

FROM: J. S. COUPAL

SUBJECT: Premiums, Antler Mine

I am enclosing a copy of a memorandum from Elgin Holt on the premiums on the Antler Mine. Evidently the B quota with the 40 tons on zinc will not do much good as Mr. Woolley of the U. S. Smelting Co., who is interested in the property, feels as though a C quota on zinc and an extra premium on copper is necessary.

If they have not applied for these quotas it is up to them. I am sending a copy of this memo to Pete Vukoye.

J. S. Coupal

c.c. Pete Vukoye



March 7, 1944

MEMORANDUM

TO: W. C. Broadgate  
FROM: J. S. Coupal

PREMIUMS  
COPPER, LEAD & ZINC  
ANTLER MINE  
Pete Vukoye  
Mohave County

I am enclosing a memo from Holt regarding the delay in advanced premiums on copper, lead and zinc on the Antler Mine. You will note in this that Vukoye applied for B and C premiums on lead and zinc during June, 1943 and that matter is still unsettled. There has been a lot of work done at the camp and they have opened up a sizeable ore body but some of it is very marginal.

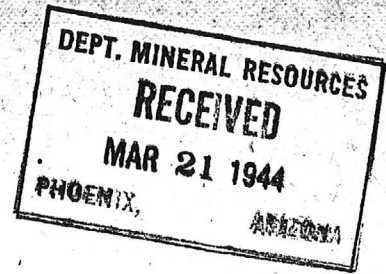
In addition to Holt's memo of March 6 I am enclosing a copy of his report on the property.

There has been a little unfavorable activity by some connected with the Silver Shield Mining and Milling Company in promoting this company who have taken over the operations but application was applied for in the name of Pete Vukoye.

M. M. Woolley of the U. S. Smelting, Refining and Mining is interested with Vukoye in seeing this property make good and he also has written asking us to try and clear up the premium difficulties.

JSC:LP  
Enc.

Washington, D.C.  
March 17, 1944



SUBJECT: Pete Vukoye, Antler Mine

I hope the B-zero lead will carry Vukoye through OK as there is little chance of doing much further on lead at any future time. This is tops.

W. C. Broadgate

*1 1/2 g. lead*

*Impure - {*  
*1 1/2 g. Ag.*  
*Cu. 2.7*  
*Lead 1.15*  
*Zinc 7.85*

*|*  
*Zn. 7.2*  
*Cu. 4.8*  
*Pb. -*

**DEPARTMENT OF MINERAL RESOURCES**  
**STATE OF ARIZONA**  
**FIELD ENGINEERS REPORT**

Mine      Antler Mine  
District   12 m. East of Yucca  
Subject:   Present Status

Date    May 1, 1952  
Engineer   Mark Gemmill

This property until recent years was owned by Phelps Dodge Corp. It is now owned and operated by the Yucca Mining & Milling Co. Bob Dalton Mgr. Yucca

The present owners built a 100 ton selective flotation mill on the property several years back and it has been operating with fair success since. The main values are copper, lead and zinc. The grade of the ore is such that it has been a marginal operation. Recently the company secured an overceiling price for their copper which they expect will permit them to operate with a small profit.

They now plan to increase the capacity of the mill and expand the mining operation with considerable development work planned. The ore reserves at present are not large but Mr. Dalton stated that he thinks the possibilities for large orebodies are very good.

The operations of the Company last year were partly curtailed by water shortage. Due to heavy winter precipitation the water outlook is now good for some time.

The property is fairly well equipped and the management appears to be good.

DEPARTMENT OF MINERAL RESOURCES  
STATE OF ARIZONA  
FIELD ENGINEERS REPORT

Mine Antlers

Date April 12, 1956

District near Borianna 12 m. east of Yucca

Engineer Mark Gemmill

Subject: Present Status

This property was held by Phelps Dodge Corp. for a number of years. It was acquired during world War 11 by Yucca Mining and Milling Co. Considerable low grade ore had been developed by early operations but there had been very little production.

Yucca Mining and Milling Co. has recently leased the property to Samicol Mineral Corp. of Santa Fe, New Mexico, R. J. Dalton, 624 Courts Place, Kingman, Genl. Mgr.

After acquiring the mine, Yucca M. & M. Co. installed a 120 ton Flotation plant and operated intermittantly for several years, finally closing down in 1952 when copper and zinc prices were too low for profitable operation. Mr. Dalton states that the total production about \$1,000,000. with no data given on tonnage or ore values. The values are almost entirely in copper and zinc.

Samicol Minerals Corp. have had some men working in the mine for several weeks and will start the mill immediately. They think the the present copper and zinc prices will permit a profitable operation.

Dalton and Sons have a fertilizer operation going on at the Antler Mine. Their product is called Ferro-Soil-Til. This is made from the mill tailings of former operations and the processing is simply the drying, pulverizing and sacking of the whole tailings. Mr. Dalton stated that the product experimented with for some time past and has been found to be very beneficial for certain soils, and that they now have quite a market developed for it.

YUCCA MINING AND MILLING CO.

MINE: "Antlers", near Borianna 12 M E of Yucca, Mohave Co.

OWNER: Yucca Mining and Milling Co.

LESSEE: Samicol Mineral Corp., Santa Fe, N.M.  
R.J.Dalton, 624 Courts Place, Kingman, Gen. Mgr.  
Dalton & Sons have fertilizer oper. at this mine. 4/56

\*

Operator

Kenneth O. Watkins ✓

9-44

Box 67

yucca

LEAD-ZINC QUESTIONNAIRE

October 14 1957.

Do you approve of the Emergency Lead-Zinc Committee's seeking relief for the lead-zinc industry and has it your authorization to speak for you? Yes

What Arizona Mines and Mills in the lead-zinc class do you control?

(1) Antlers Mine, located near Yucca, Mohave County, Arizona

(2) \_\_\_\_\_

Which ones are operating? (1) Not operating. (2) \_\_\_\_\_

If not operating, when shut down? (1) May 1956 (2) \_\_\_\_\_

\* Number employed, prior to shut-down, in mine, mill or sections thereof producing lead or zinc ores? (1) 30 (2) \_\_\_\_\_

Number so employed on January 1, 1957? (1) None (2) \_\_\_\_\_

Number so employed on October 1, 1957? (1) None (2) \_\_\_\_\_

Remarks Impossible to operating under current Lead Zinc prices.

\*Mine was under lease during this period  
and the requested information is not  
available to us. Figures given are estimates.

YUCCA MINING AND MILLING COMPANY, INC.

Company

Box 57  
Yucca, Ariz

By:

Signature

*President*

Please fill in NOW, tear off, and mail to:

Arizona Department of Mineral Resources  
Mineral Building, Fairgrounds  
Phoenix, Arizona

ANTLERS

MOHAVE COUNTY  
CEDAR VALLEY

YUCCA MINING & MILLING CO.,  
Yucca, Arizona

120 t/day copper-zinc flotation mill at Antlers mine.  
Not operating, idle since early 1956.

(Mills - Northern District)

Sept. 30, 1957

B.J. SQUIRE  
Field Engineer

6-11-59 (ALJ) - Ben Williams - Secy. - Yucca Mining & Milling Co.  
1001 "D" Ave. P.O. Box 1051  
Douglas, Ariz.

ANTLER

MOHAVE COUNTY  
CEDAR VALLEY

Visited Antlers Mine where R. J. Dalton is  
shipping bagged tailings product (marketed under  
name "Ferro Soil Til.") He is shipping  
approximately one car/day to Los Angeles  
dealers, principally to Bandini. 4 men  
working.

5-27-59

T. P. LANE  
WR

# Standard Metals 1977 Annual Report

## **Antler Mine, Yucca, Arizona**

Decreased zinc and copper prices have made it impractical at this time to continue with further exploration or development. Results of our exploration activities in the past have been highly satisfactory, but until the prices of the base metals which can be produced at this mine make it economically feasible, we do not intend to resume operations which were suspended in 1971.

At Yucca, Arizona, the Company owns a 300-ton per day flotation mill and a copper-zinc mine. The property has been on a stand-by basis since January 1971. In the interim, a great deal of the equipment has been transferred to the Silverton mill in line with Standard Metals' project to modernize it and increase its capacity. Substantial exploration and development work, including drilling, has been done on the Arizona property, materially increasing the Company's known ore bodies. Decreased zinc and copper prices have made it impractical at this time to continue with further exploration or development on a major scale.



# Standard Minerals

## 1977 Form 10-K

### Antler mine and mill-

The Antler mine is an underground zinc and copper mine located in Arizona. The mine was operated at a loss during 1970 and was closed in early 1971. No depreciation or amortization of the remaining Antler property has been charged against income since 1970.

A portion of the equipment originally purchased for this mine has been transferred to the Company's operating mine at Silverton, Colorado. An analysis of the net investment in the Antler mine and mill at December 31, 1977, is as follows:

Building, machinery and equipment	\$ 870,973
Mine development costs, net of amortization	1,513,909
	-----
	2,384,882
Less-	
Accumulated depreciation	( 199,387)
Reduction in carrying value	( 800,000)
	-----
	\$1,385,495
	=====

The Company engaged in substantial exploration activities on this property in 1975. Based upon the results of these activities, the present estimate of 5,100,000 tons of proven and probable reserves was determined. Current market prices of the minerals contained in the reserves are not at a level sufficient to recover the present investment, operating costs and the estimated capital outlay required to bring the property to an operating stage. However, in the opinion of management, current market prices may not be indicative of future prices and there has not been a permanent impairment in the value of the Company's investment. Realization of the net investment is dependent upon the Company obtaining the necessary financing and the success of future operations or the sale or other disposition of the properties.

SAMPLES NOT KEPT OVER 30  
DAYS EXCEPT BY REQUEST

SAMPLES SENT US BY MAIL WILL  
RECEIVE PROMPT ATTENTION

CERTIFICATE OF ASSAY FROM LABORATORY OF

**R. V. McALLISTER**

ASSAYERS, CHEMISTS, METALLURGISTS

FRONT STREET  
KINGMAN, ARIZONA

FLOTATION TESTS  
CYANIDE TESTS

PHONE BLUE 252

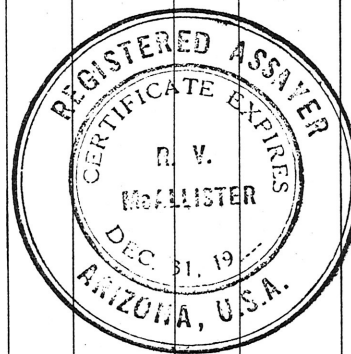
Department of Mineral Resources

Sept. 18, 1943

194

MOHAVE MINER PRINT

MOHAVE MINER PRINT																	
OFFICE NUMBER	OWNER'S MARK	GOLD, PER TON				SILVER, PER TON				TOTAL VALUE GOLD & SILVER	COPPER		LEAD		ZINC		PER CENT
		OUNCES		VALUE		OUNCES		VALUE			PER CENT		PER CENT		PER CENT		
10903	<i>antler mine</i>  <i>Ok for</i> <i>make claim</i>									Nickel							
										-----							
										None							



GOLD \$35 PER OUNCE  
SILVER 71 CENTS PER OUNCE

Charges \$ 3.00

*R V McAllister*

REGISTERED ASSAYER

July 10, 1943

MEMORANDUM:

To: J. S. Coupal  
From: Elgin B. Holt  
Subject: Report on Antler Mine,  
Pete Vukoye, Kingman, Arizona



Kindly mail to Pete Vukoye a copy of my report, attached hereto, on the Antler Mine; also a copy of my memo re- this property dated July 10. 9-13p

Thanks.

*Elgin*

*Also have photocats made of sketch map and mail me copy. ✓ 9-13*

*E.*

PHONE 5-6172

ESTABLISHED 1898

STOCK EXCHANGE BUILDING

# W. H. CHILD, INC.

## SECURITIES

MEMBER: SALT LAKE STOCK EXCHANGE

SALT LAKE CITY 9, UTAH

**TO:** Elgin B. Holt,  
Box 188,  
Kingman, Arizona.

January 28, 1944.

- ☐ As Brokers we have this day BOUGHT for your account and risk.  
☐ As Brokers we confirm sale to you of.  
☒ As Principals and for our account, we confirm sale to you.

Time and place of transaction furnished upon request.

SHARES	DESCRIPTION	PRICE	PRINCIPAL	COMMISSION	TAX	GROSS AMOUNT
13,500	SILVER SHIELD	----	\$500.00N	-----	---	\$500.00
	Received payment. Will forward stock to you first of the week. Many Thanks.					

CLASS OF SERVICE

This is a full-rate Telegram or Cablegram unless its deferred character is indicated by a suitable symbol above or preceding the address.

# WESTERN UNION

1201

836A

SYMBOLS

DL=Day Letter

NL=Night Letter

LC=Deferred Cable

NLT=Cable Night Letter

Ship Radiogram

A. N. WILLIAMS  
PRESIDENT

NEWCOMB CARLTON  
CHAIRMAN OF THE BOARD

J. C. WILLEVER  
FIRST VICE-PRESIDENT

The filing time shown in the date line on telegrams and day letters is STANDARD TIME at point of origin. Time of receipt is STANDARD TIME at point of destination

RXS39 8=SALT LAKE CITY UTAH JAN 28 1944 922A

ELGIN B HOLT=

KINGMAN ARIZ=

OFFER YOU 13500 SILVER SHIELD \$500 IMMEDIATE ACCEPTANCE=

W H CHILDS INC.

13500 \$500.

CLASS OF SERVICE DESIRED	
DOMESTIC	CABLE
TELEGRAM	ORDINARY
DAY LETTER	URGENT RATE
SERIAL	DEFERRED
NIGHT LETTER	NIGHT LETTER

Patrons should check class of service desired; otherwise the message will be transmitted as a telegram or ordinary cablegram.

# WESTERN UNION

1207

A. N. WILLIAMS  
PRESIDENT

NEWCOMB CARLTON  
CHAIRMAN OF THE BOARD

J. C. WILLEVER  
FIRST VICE-PRESIDENT

\$	CHECK
\$	ACCOUNTING INFORMATION
F	TIME FILED

Send the following telegram, subject to the terms on back hereof, which are hereby agreed to

To W. H. Child, Inc.,

Feb. 5, 1944

Care of or Apt. No. \_\_\_\_\_

Street and No. Salt Lake Stock Exchange

Place Salt Lake City, Utah.

Returning Silver Shield stock stop  
please sell at market price get  
what you can disregarding other  
instructions in letter-

Elgin B. Hunt

Sender's Name \_\_\_\_\_

Address \_\_\_\_\_

Tel. No. \_\_\_\_\_

2/15/44.

Bar to Midvale, information from Maddox:-

5.7 tons

Cu = 5.7%

Zn = 9.8%

Pb = 2.84%

Ag = 2.00.

\*

July 10, 1943

MEMORANDUM:

To: J. S. Coupal  
From: Elgin B. Holt  
Subject: Report on Antler Mine,  
Pete Vukoye, Kingman, Arizona



Kindly mail to Pete Vukoye a copy of my report, attached hereto, on the Antler Mine; also a copy of my memo re- this property dated July 10. 9-13/40

Thanks.

*Elgin*

*Also have photocasts made of sketch map and mail me one copy. ✓ 9-13*

PHONE 5-6172

ESTABLISHED 1898

STOCK EXCHANGE BUILDING

**W. H. CHILD, INC.**

**SECURITIES**

MEMBER: SALT LAKE STOCK EXCHANGE

SALT LAKE CITY 9, UTAH

TO: Elgin B. Holt,  
Box 188,  
Kingman, Arizona.

January 28, 1944.

- ☐ As Brokers we have this day BOUGHT for your account and risk.  
☐ As Brokers we confirm sale to you of.  
☒ As Principals and for our account, we confirm sale to you.

Time and place of transaction furnished upon request.

SHARES	DESCRIPTION	PRICE	PRINCIPAL	COMMISSION	TAX	GROSS AMOUNT
13,500	SILVER SHIELD	----	\$500.00N	----	---	\$500.00
	Received payment. Will forward stock to you first of the week. Many Thanks.					