



CONTACT INFORMATION

Mining Records Curator
Arizona Geological Survey
1520 West Adams St.
Phoenix, AZ 85007
602-771-1601
<http://www.azgs.az.gov>
inquiries@azgs.az.gov

The following file is part of the

Arizona Department of Mines and Mineral Resources Mining Collection

ACCESS STATEMENT

These digitized collections are accessible for purposes of education and research. We have indicated what we know about copyright and rights of privacy, publicity, or trademark. Due to the nature of archival collections, we are not always able to identify this information. We are eager to hear from any rights owners, so that we may obtain accurate information. Upon request, we will remove material from public view while we address a rights issue.

CONSTRAINTS STATEMENT

The Arizona Geological Survey does not claim to control all rights for all materials in its collection. These rights include, but are not limited to: copyright, privacy rights, and cultural protection rights. The User hereby assumes all responsibility for obtaining any rights to use the material in excess of "fair use."

The Survey makes no intellectual property claims to the products created by individual authors in the manuscript collections, except when the author deeded those rights to the Survey or when those authors were employed by the State of Arizona and created intellectual products as a function of their official duties. The Survey does maintain property rights to the physical and digital representations of the works.

QUALITY STATEMENT

The Arizona Geological Survey is not responsible for the accuracy of the records, information, or opinions that may be contained in the files. The Survey collects, catalogs, and archives data on mineral properties regardless of its views of the veracity or accuracy of those data.

PRINTED: 08-31-2006

ARIZONA DEPARTMENT OF MINES AND MINERAL RESOURCES AZMILS DATA

PRIMARY NAME: ANTELOPE GROUP

ALTERNATE NAMES:

COCHISE COUNTY MILS NUMBER: 643

LOCATION: TOWNSHIP 19 S RANGE 25 E SECTION 4 QUARTER SW
LATITUDE: N 31DEG 48MIN 19SEC LONGITUDE: W 109DEG 48MIN 23SEC
TOPO MAP NAME: TURQUOISE MOUNTAIN - 7.5 MIN

CURRENT STATUS: UNKNOWN

COMMODITY:

COPPER OXIDE

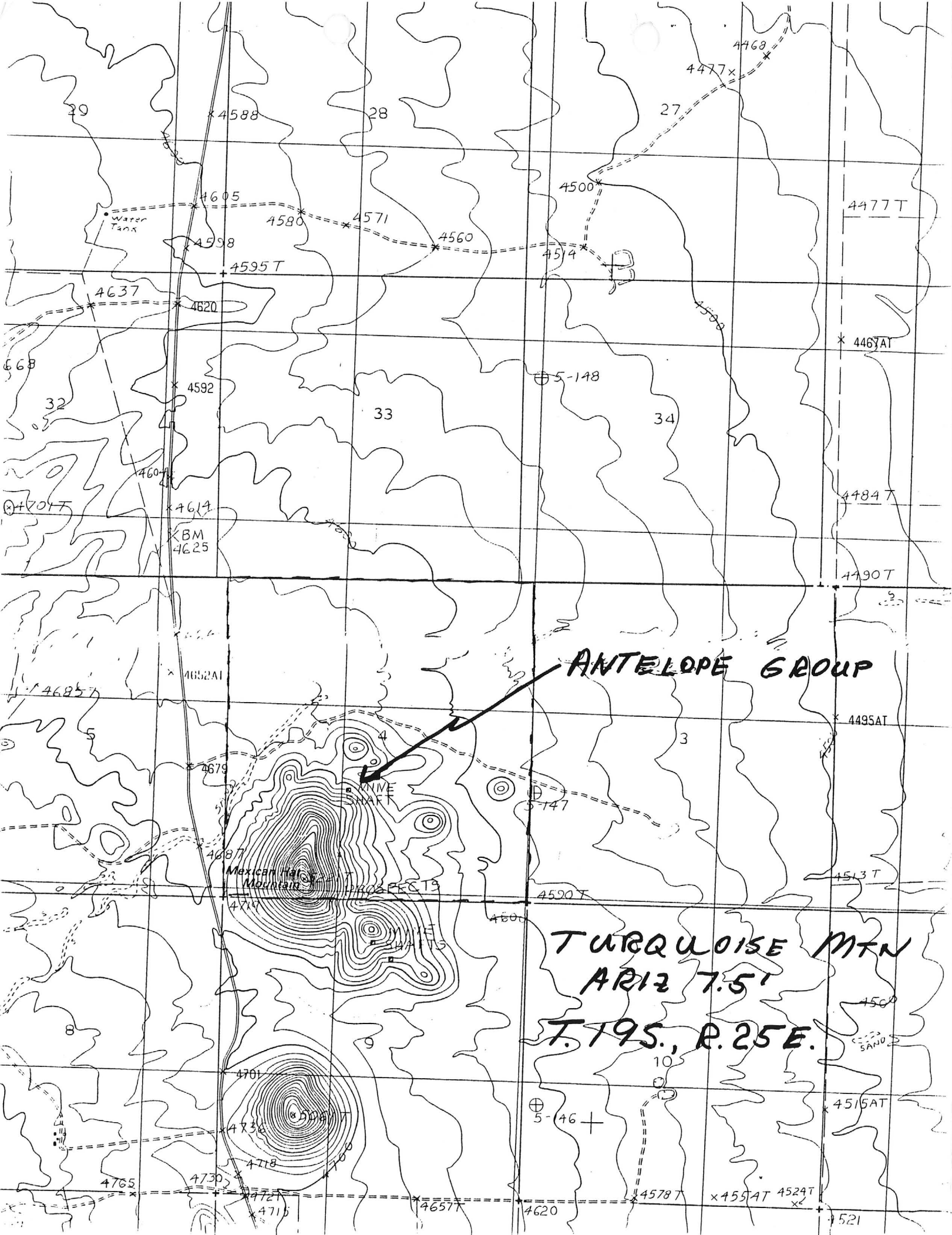
SILVER

GOLD LODE

BIBLIOGRAPHY:

ADMMR ANTELOPE GROUP FILE

AZBM FILE DATA



Department of Mines and Mineral Resources
MINE AND PROSPECT FIELD VISIT DATA SUMMARY

Sheet 1 of 2

COMMODITIES: Copper oxides

MILS ID No.: 643

DATE: May 11, 1989

ENGINEER: Nyal Niemuth and Ken Phillips

INFORMATION FROM: Field visit above date

PROPERTY SUMMARY

I. MINE NAME: Antelope Group POSSIBLE NAMES
INCL. ANY CLAIM NAMES NOTED:

II. LOCATION: T 19S R 25E SEC(S): Sec 4, SE, SW MINE DISTRICT

ELEV.: 4600 COUNTY Cochise TOPO QUAD. Pearce 15

DIRECTIONS:

MAP ATTACHED

III. OWNERSHIP: NAME

PHONE:

ADDRESS:

COMPANY NAME IF ANY:

PERTINENT PEOPLE:

IV. PROPERTY AND HOLDINGS: May presently be covered by Oneida Res. claims

V. PAST PRODUCTION-NOTED, KNOWN, PROBABLE, UNKNOWN, NONE: Probable
small production of oxide zone copper ore with or without silver/gold is
possible.

VI. CURRENT STATUS:

VII. WORKINGS: Two shafts; upper (east on topo) (south on ground) is
deeper; 100 feet of prospect pits along vein.

Sheet 2 of 2

VIII GEOLOGY AND MINERALOGY: DEPOSIT TYPE: Fault breccia system observed

LENGTH: WIDTH VEIN STRIKE N 60 deg.W DIP +85 deg NE

HOST ROCK: Quartz latite (andesite latite porphyry)

ECONOMIC MINERALS: Observed chrysocolla, other possible copper/silver secondary minerals. Copper minerals, however, are very rare.

COMMENTS:

IX. EQUIPMENT ON SIGHT: None

X. SAMPLING: NOTE TYPE IF ANY, DRILLING? Geochem sampling grid observed. Mentioned in Northern Miner as part of Oneida Resources Mexican Hat Project.

XI. REFERENCES AND REMARKS: ADMMR Antelope Group file

DEPARTMENT OF MINERAL RESOURCES
STATE OF ARIZONA
FIELD ENGINEERS REPORT

Date August 8, 1940

Mine Antelope Group

Engineer Miles M. Carpenter, E.M.

District Turquoise, Cochise Co.

Location 3 miles N.E. from
Courtland.

Former Name

Owner C. W. Holderman

Address Courtland, Arizona

Operator Same

Address

President - No Corp.

Gen. Mgr.

Mine Supt.

Mill Supt.

Principal Metals - Copper, Silver

Men Employed

Production Rate - Not established

Mill: Type & Cap.

Power: Amt. & Type - 4HP Novo gasoline driven
hoist. Geared to drum.

Operations: Present - Idle.

Operations Planned

Number Claims, Title, etc. - 6 unpatented lode claims on patented homestead.

Description: Topography & Geography - Low rolling hills outlying a few miles
from the Dragon Mts.

Mine Workings: Amt. & Condition - 1 vertical shaft 100 ft.

1 incline shaft 80 ft. depth.

Note: These shafts are about 50 ft. apart and
are connected.

Drifts 200 ft.

Location work only on other claims.

Geology & Mineralization - The country rock is chiefly granitic porphyry with dikes of more basic, dark, fine grained porphyry probably andesite. Ore occurs in an east-west vein dipping steeply north. Vein width: is 1 inch to 3 inches with well defined walls. Mineralization shows iron oxides and copper carbonates and silicates.

Ore: Positive & Probable, Ore Dumps, Tailings - About 30 tons of ore are in the bins and on the dumps, said to sample 10% to 12% copper and 10 oz. silver. Ore shows in the various faces but the vein is not opened sufficiently to justify an estimate of tonnage.

Mine, Mill Equipment & Flow Sheet - Hoist and headframe. Corrugated hoist house and shop. Track and ore bin.

Road Conditions, Route - Property lies 1/2 mile or less off the Pearce-Gleeson highway. Road to mine could be reconstructed at a cost of \$100 or so.

Water Supply - Not developed on property but available at nearby ranch for camp purposes.

Brief History

Special Problems, Reports Filed - No reports available.

Remarks - This property appears to be a small scale shipper that could be put into operation with a small amount of capital.

If property for sale: Price, terms and address to negotiate - Property is open for deal either sale or lease. The owner can be addressed - C. W. Holderman, Courtland, Arizona, or located at the ranch of C. L. McKinney.

SIGNED - Miles M. Carpenter, E. M.

DEPARTMENT OF MINERAL RESOURCES
STATE OF ARIZONA
FIELD ENGINEERS REPORT

Mine Antelope Group

Date Feb. 15, 1956

District Turquoise Mining Dist., Cochise Co.

Engineer Axel L. Johnson

Subject: Present Status.

These claims are reported to be abandoned by former owner, and no assessment work has been done on same. Apparently open for location.

DEPARTMENT OF MINERAL RESOURCES.
News Items

Date Aug. 8, 1940

Mine Antelope Group

Location 3 mi. N.E. from Courtland

Owner C. W. Holderman

Address Courtland

Operating Co. Same

Address _____

Pres. No corp.

Genl. Mgr. _____

Mine Supt. _____

Mill Supt. _____

Principal Metals Copper, Silver

Men Employed None

Production Rate Not established

Mill, Type & Capacity None.

Power, Amt. & Type 4 H.P. Novo geared to Drum

Signed M. M. C.

(Over)