



CONTACT INFORMATION

Mining Records Curator
Arizona Geological Survey
1520 West Adams St.
Phoenix, AZ 85007
602-771-1601
<http://www.azgs.az.gov>
inquiries@azgs.az.gov

The following file is part of the

Arizona Department of Mines and Mineral Resources Mining Collection

ACCESS STATEMENT

These digitized collections are accessible for purposes of education and research. We have indicated what we know about copyright and rights of privacy, publicity, or trademark. Due to the nature of archival collections, we are not always able to identify this information. We are eager to hear from any rights owners, so that we may obtain accurate information. Upon request, we will remove material from public view while we address a rights issue.

CONSTRAINTS STATEMENT

The Arizona Geological Survey does not claim to control all rights for all materials in its collection. These rights include, but are not limited to: copyright, privacy rights, and cultural protection rights. The User hereby assumes all responsibility for obtaining any rights to use the material in excess of "fair use."

The Survey makes no intellectual property claims to the products created by individual authors in the manuscript collections, except when the author deeded those rights to the Survey or when those authors were employed by the State of Arizona and created intellectual products as a function of their official duties. The Survey does maintain property rights to the physical and digital representations of the works.

QUALITY STATEMENT

The Arizona Geological Survey is not responsible for the accuracy of the records, information, or opinions that may be contained in the files. The Survey collects, catalogs, and archives data on mineral properties regardless of its views of the veracity or accuracy of those data.

06/09/86

ARIZONA DEPARTMENT OF MINES AND MINERAL RESOURCES FILE DATA

PRIMARY NAME: ANTELOPE MINE

ALTERNATE NAMES:

PIMA COUNTY MILS NUMBER: 1137

LOCATION: TOWNSHIP 16 S RANGE 7 E SECTION 31 QUARTER SW
LATITUDE: N 31 DEG 59 MIN 00 SEC LONGITUDE: W 111 DEG 40 MIN 50 SEC
TOPO MAP NAME: SAN JUAN SPRINGS 7.5

CURRENT STATUS: UNKNOWN

COMMODITY:

SILICON SILICA FLUX
GOLD LODE

BIBLIOGRAPHY:

ADMMR ANTELOPE MINE FILE
~~AREA IS SUPERSEDED~~

42'30"

'34

3648 II SW SAN VICENTI 3.9 MI.
(HAIVANA NAKYA) R 7 E

'36

40'

BM 2891

86

30

3062

SAN JUAN SPRINGS T.S.

BM 3001

3044

30

Pavio

BM 2939

2939

3044

30

BM 2911

2911

2920

Kug

31

Pavo Kug
(Ruins)

Corral

Wash

Wash

BM 2970

2970

3172

BM 3051

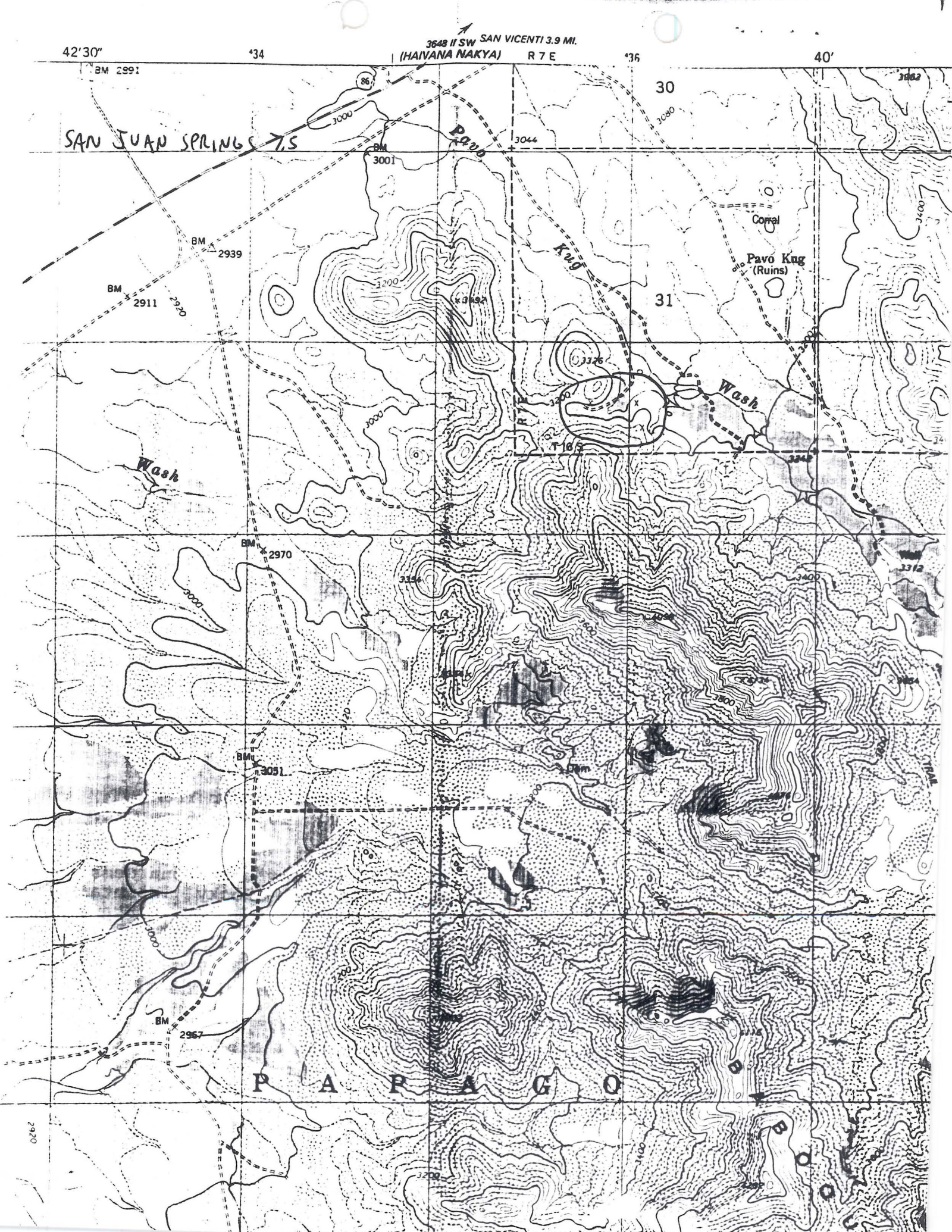
3051

P A P A G O

BM 2957

2957

2920



KIT PEAK SILICA LEASE (DENNING LEASE)

PIMA COUNTY

2 miles west of Kitt Peak, Pima County

Conference with Virgil Denning's foreman, at Sherridan pit, 4/5/66.

The quartz fault block west of Kitt Peak has been exhausted due to it having pinched out against a flat fault on the bottom and a transverse fault to the east. Denning said his total production from here totaled 8,200 tons that averaged 92 percent silica. He had hoped to hold 94 percent or better, but could not avoid some dilution from the sides of the relatively narrow body. The production of 8,200 tons was within a few hundred tons of the original engineering estimate.

LAS MEMO 4/5/66

Denning stated that he was arguing with the local P.D. officials (Rickard, New Smelter dept. and Jim Briggs), over the price paid for Silica. He is not doing well at \$5.50-\$6.00 per ton (depending on grade). He presented his cost figures to them. It would seem that he could not afford a breakdown of equipment and still operate. Denning said that his check on commercial ore truckers' prices showed about 6 to 7 cents per ton mile on average roads, so he figured his would be at least comparable, or close to \$4.75 per ton, on a haul of about 75 miles (69 miles are paved and 6 dirt).

ASMOA Meeting LAS 4/5/66 (Ajo).

Active Mine List 1972 - Empl. 3

Mr. Denning's converter flux operation is progressing satisfactorily. He estimates he has about 3 years reserve of quartzsite remaining. GW WR 6/21/72

Active Mine List - October 1972 - Empl. 3

Virgil Denning is still producing upwards of 100 tpd of quartzsite for converter flux. He was generally in low spirits due mainly to the fuel shortage. He now has to go to Gila Bend for diesel fuel and never knows whether or not it will be available when he gets there. GW WR 6/20/73

DEPARTMENT OF MINERAL RESOURCES

STATE OF ARIZONA
FIELD ENGINEERS REPORT

Mine DENNING (KIT PEAK) LEASE

Date 10/5/65

District Baboquivair Mtns., Pima County

Engineer Lewis A. Smith

Subject: Visit - 10/5/65 and Conference with Virgil Denning.

ACCESS: 1 mile of rough road, south of the Ajo-Tucson Hwy. and 13.9 miles NE of Sells.

The deposit is being worked and averages 96-97 percent silica. A small pit has been developed on the west in a wide quartz vein (20 feet) and two shallow benches (25 foot) established. This deposit stands in high relief and is traceable for 200 feet (both ends apparently being formed by faults. However float is found for $\frac{1}{4}$ mile or more to the NE. The quartz is dense, white, and thinly sheeted, or it is somewhat vuggy and contains some specularite. No supplementary values have been found. Denning thinks that he will work here for about 2-3 weeks then will return to Sherridan Pit, since his quota of this material is about filled and the haul from here is somewhat longer than that from Sherridan. 2 truck drivers, and 4 miners a foreman, and Denning comprise the work force. Equipment includes a 600 Denver Compressor, a Denver front loader (1 cu yd). A Denver Wagon drill, and two 22 yd. trucks (Dart). Denning thinks that more this high-grade silica will be mined later in the year.

Denning said he had about finished at the Kit Peak area lease. He also said he planned to move back to the Sherridan Pit (Cimarron Mts.)

ASMOA Meeting LAS 10/15/65

The pit has been deepened to about 40 feet at the face and widened somewhat. The quartz is very clean on the whole, assaying about 93-95 percent silica. It lies in a zone 15-20 feet wide and 300 feet long between two transverse faults. The depth has not yet been determined. To the east of the faulted block, float silica was seen, but no croppings have yet been found. A reserve good for several months operation seems to be present. Present plans would keep Denning's operations here for at least 2 more months, before he moves back to Sherridan.

Visit and conference with Virgil Denning - 12-7-65 - LAS

"DENNING" SILICA LEASE (E of SELLS).

PIMA COUNTY
COMOBABI DIST.

Conference with Virgil Denning 4/8/65

Owner: Papago Indian Reservation, Sells.

LESSEE: Virgil Denning, Ajo, Arizona (1800 - 20 Arizona 700 - 000)

LOCATION: NW $\frac{1}{4}$ S20 and NE $\frac{1}{4}$ S19, T17S, R6E (unsurveyed)

MINERAL: Quartz (trace of gold).

HAUL: 78 miles; all but 1 mile is paved.

RESERVES: Appear to be fairly large, in a more or less cylindrical form.

Average Grade: General chip samples ranged from 94.5 percent to 97 percent silica.
(To be used for smelter slurry)

WORK: A mile of graded dirt road is being built.

Plans: Plans call for a production of 50-75 tpd to be delivered to New Cornelia Smelter, at Ajo.