



CONTACT INFORMATION

Mining Records Curator
Arizona Geological Survey
1520 West Adams St.
Phoenix, AZ 85007
602-771-1601
<http://www.azgs.az.gov>
inquiries@azgs.az.gov

The following file is part of the

Arizona Department of Mines and Mineral Resources Mining Collection

ACCESS STATEMENT

These digitized collections are accessible for purposes of education and research. We have indicated what we know about copyright and rights of privacy, publicity, or trademark. Due to the nature of archival collections, we are not always able to identify this information. We are eager to hear from any rights owners, so that we may obtain accurate information. Upon request, we will remove material from public view while we address a rights issue.

CONSTRAINTS STATEMENT

The Arizona Geological Survey does not claim to control all rights for all materials in its collection. These rights include, but are not limited to: copyright, privacy rights, and cultural protection rights. The User hereby assumes all responsibility for obtaining any rights to use the material in excess of "fair use."

The Survey makes no intellectual property claims to the products created by individual authors in the manuscript collections, except when the author deeded those rights to the Survey or when those authors were employed by the State of Arizona and created intellectual products as a function of their official duties. The Survey does maintain property rights to the physical and digital representations of the works.

QUALITY STATEMENT

The Arizona Geological Survey is not responsible for the accuracy of the records, information, or opinions that may be contained in the files. The Survey collects, catalogs, and archives data on mineral properties regardless of its views of the veracity or accuracy of those data.

11/10/94

ARIZONA DEPARTMENT OF MINES AND MINERAL RESOURCES FILE DATA

PRIMARY NAME: AMETHYST

ALTERNATE NAMES:

LOOKOUT PAT. CLAIM MS 1196

MARICOPA COUNTY MILS NUMBER: 609

LOCATION: TOWNSHIP 7 N RANGE 6 E SECTION 31 QUARTER SW
LATITUDE: N 33DEG 54MIN 02SEC LONGITUDE: W 111DEG 47MIN 08SEC
TOPO MAP NAME: HUMBOLDT MTN - 7.5 MIN

CURRENT STATUS: EXP PROSPECT

COMMODITY:

FLUORINE

BIBLIOGRAPHY:

USGS HUMBOLDT MTN QUAD
ADMMR AMETHYST MINE FILE
ADMMR FLUORSPAR RPT, ELEVATORSKI P 30
BLM MINING DISTRICT SHEET
BLM MINERAL SURVEY MS 1196

AMETHYST

REFERENCES

MARICOPA COUNTY
CAVE CREEK DIST.
T7N R6E Sec. 31

Maricopa County MILS Index #609

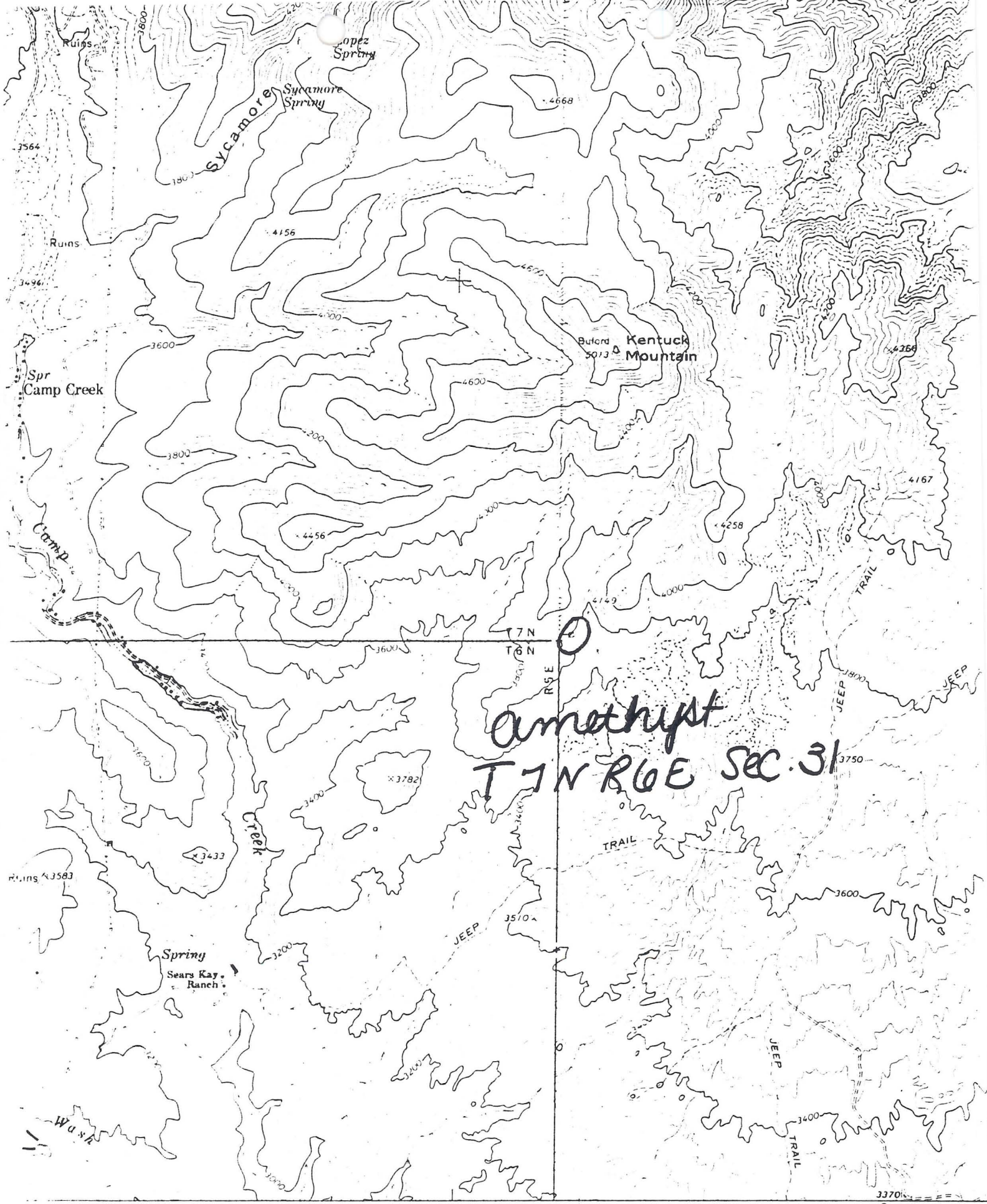
ADMMR Fluorspar p. 30

ABM Bull. 180, p. 352

MILS Sequence #0040130121

BLM Mining District Sheet #1196 (Lookout Patented Claim #1196)

Humboldt Mtn. 7.5' Topo (included in file)



Amethyst
 T7N R6E Sec. 31

SCALE 1:24000



Humboldt mtn 7.5'

3370
 ● INTERIOR—GEOLOG.
 429

ROAD

Medium duty

DEPARTMENT OF MINERAL RESOURCES

State of Arizona

MINE OWNER'S REPORT

Idk

Date 1-31-58

- 1. Mine: Amethyst
- 2. Location: Sec. 31 Twp. 7N Range 6E Nearest Town See Creek Distance 17 miles by road
 Direction..... Nearest R.R. Phoenix Distance 47 miles
 Road Conditions Poor off graded road for 5 miles, rest good.
- 3. Mining District and County: Cave Creek Dist. Maricopa Co.
- 4. Former Name of Mine: None
- 5. Owner: James O'Neal, Jack Wells, William Zimmer Partnership
Address:
- 6. Operator: James O'Neal Box 163 Cave Creek
Address:
- 7. Principal Minerals: Fluorite, Quartz
- 8. Number of Claims: Lode 1 Patented..... Unpatented
 Placer..... Patented..... Unpatented.....
- 9. Type of Surrounding Terrain: Rough and mountainous - east side Kentucky Mtns.
- 10. Geology and Mineralization: Fluorite quartz veins, in granite. Irregular. ^{fish} ~~Irregular~~ ^{Irregular} bedded path perphatic which has beryl, smoky white (White Caps) Oscar Englander ^{N. Carter Phoenix} made report on the White Cap group. Up to 2 feet of fluorite in vertical veins - (N.S. Strikes)
- 11. Dimension and Value of Ore Body: Unknown

Please give as complete information as possible and attach copies of engineer's reports, shipment returns, maps, etc. if you wish to have them available in this Department's files for inspection by prospective leasors or buyers.

12. Ore "Blocked Out" or "In Sight": Unknown

Ore Probable: Unknown

13. Mine Workings—Amount and Condition: Good

No.	Feet	Condition
Shafts		
Raises		
Tunnels	500'	with 2 Fluct. (old mine) open.
Crosscuts		
Stopes		

1. long cut (5' x 20' x 20' face).

14. Water Supply:

15. Brief History: December 1955, first opened up of mine

16. Remarks: 1 long cut (5' x 20' x 20' face).
Vern increased in depth.

17. If Property for Sale, List Approximate Price and Terms: Interested in
negotiating sale on lease.

18. Signature: James O'Neal