



CONTACT INFORMATION

Mining Records Curator
Arizona Geological Survey
1520 West Adams St.
Phoenix, AZ 85007
602-771-1601
<http://www.azgs.az.gov>
inquiries@azgs.az.gov

The following file is part of the

Arizona Department of Mines and Mineral Resources Mining Collection

ACCESS STATEMENT

These digitized collections are accessible for purposes of education and research. We have indicated what we know about copyright and rights of privacy, publicity, or trademark. Due to the nature of archival collections, we are not always able to identify this information. We are eager to hear from any rights owners, so that we may obtain accurate information. Upon request, we will remove material from public view while we address a rights issue.

CONSTRAINTS STATEMENT

The Arizona Geological Survey does not claim to control all rights for all materials in its collection. These rights include, but are not limited to: copyright, privacy rights, and cultural protection rights. The User hereby assumes all responsibility for obtaining any rights to use the material in excess of "fair use."

The Survey makes no intellectual property claims to the products created by individual authors in the manuscript collections, except when the author deeded those rights to the Survey or when those authors were employed by the State of Arizona and created intellectual products as a function of their official duties. The Survey does maintain property rights to the physical and digital representations of the works.

QUALITY STATEMENT

The Arizona Geological Survey is not responsible for the accuracy of the records, information, or opinions that may be contained in the files. The Survey collects, catalogs, and archives data on mineral properties regardless of its views of the veracity or accuracy of those data.

PRINTED: 11/21/2002

ARIZONA DEPARTMENT OF MINES AND MINERAL RESOURCES AZMILS DATA

PRIMARY NAME: AMERICAN

ALTERNATE NAMES:

MOHAVE COUNTY MILS NUMBER: 360A

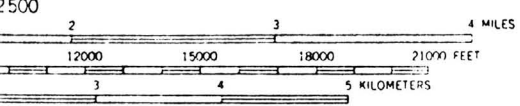
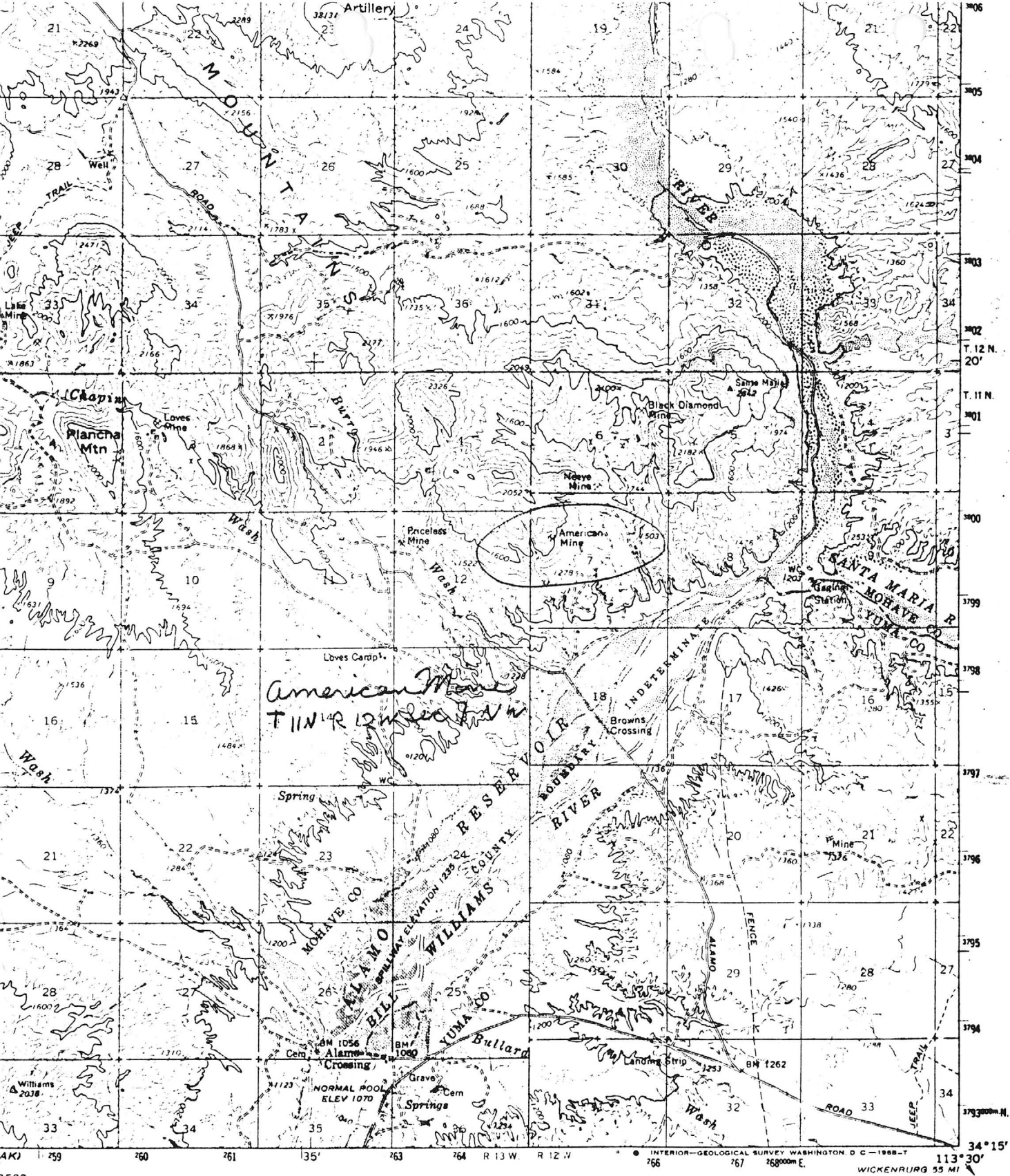
LOCATION: TOWNSHIP 11 N RANGE 12 W SECTION 7 QUARTER NW
LATITUDE: N 34DEG 18MIN 14SEC LONGITUDE: W 113DEG 33MIN 13SEC
TOPO MAP NAME: ARTILLERY PEAK - 15 MIN

CURRENT STATUS: PAST PRODUCER

COMMODITY:
MANGANESE NODULES

BIBLIOGRAPHY:

ADMMR AMERICAN FILE
ADMMR MOHAVE CUSTOM MILL PROJECT
ADMMR MOHAVE CARD FILE
FARNHAM, L.L. "MANGANESE DPSTS OF WESTERN AZ"
USBM IC 7843, P 51, 1958
MALACH, R. "MOHAVE CTY MINES" P. 32, 1977
BLM AMC FILE 49658Z6



AL 80 FEET
40-FOOT CONTOURS
SEA LEVEL

MAP ACCURACY STANDARDS
COLORADO 80225, OR WASHINGTON, D. C. 20242
D SYMBOLS IS AVAILABLE ON REQUEST



QUADRANGLE LOCATION

ROAD CLASSIFICATION
Light-duty ——— Unimproved dirt - - - - -

ARTILLERY PEAK, ARIZ.
N3415—W11330/15

1966

AMS 3252 I—SERIES V798

68
MO

Name of Mine or Prospect:	Township	Range	Section	Priority
American	11N	12W	7 bca	C
Principal Minerals:	1:250,000 Quad		7.5' - 15' Quad	
Psilomelane	Prescott		Artillery Peak	
Associated Minerals:	District Artillery Mountain		Principal Product Manganese	
Type of Operation:	County	State	Type of Deposit	
Underground: Adits, Shafts	Mohave	Ar.	Sedimentary host	
Ownership or Controlling Interest: Sitton Minerals & Development Co. (1953) ³ leases; Lewis & Peterson (1937) ³ owners				
Access: From Loves Camp T11N, R13W, S14a, proceed 1.5 miles NE on unimproved road, located on topographic quadrangle.				
Structural Control or Geological Association: <p>"The American (Mine) is a vertical, 40 feet wide, hydrothermally altered zone in a sandstone."¹</p> <p>"Manganese mineralization occurs in parallel fractured and brecciated zones cutting the sandstone and conglomerate beds of the Artillery Peak formation. The zones strike northwest and for the most part dip very steeply northeast. The sedimentary beds contain areas in which the small nodules of manganese oxides are quite plentiful."³</p>				
Age of Mineralization: Tertiary				
Production History		Geochemical Analyses		
		"Zone carries an average 7% Mn per ton." ²		
References				
1) ADMR file, Phoenix, Ar. 2) ABM (1969) Bull. 180, p. 217. 3) Farnham & Stewart (1958) p. 51.				

Information from MINE INSPECTOR'S OFFICE - August 15, 1957

✓ AMERICAN-BLACK DIAMOND Owens Dist., Mohave County
MINE & MILL 6 Claims

✓ MANGANESE

✓ LEWIS-PETERSON, Owner - Mines - Kingman, Ariz.
✓ FLOYD BROWN- Oper Mill - Wenden, Arizona) Lessees.
✓ JIM ROBINETTE - Supt.)

DEVELOPING 4-19-57

L.A.S.

See: MINING WORLD, December, 1958, p 58

AMERICAN - See: "MANGANESE DEPOSITS OF WESTERN ARIZONA"
 - USBM - IØ. 7843, p 51

BLACK DIAMOND GROUP - See: " " p 38

See: SITTON MILL (file)

ABM Bull. 180, p. 217

6565 743 30-50

DEPARTMENT OF MINERAL RESOURCES
STATE OF ARIZONA
FIELD ENGINEERS REPORT

Mine **BLACK DIAMOND**
 AMERICAN
District **Artillery Peak**
Subject: **Activity Report**

Date **June 21, 1957**
Engineer **B. J. Squire**

LOCATION: Mines are located 2 mi N of the Bill Williams Crossing in the ridge on the west side of the Big Sandy. S6, T11N, R13W - G & SR Meridian.

ORE: The American is a vertical 40 foot wide hydrothermally altered zone in the sandstone carrying 7% Mn mine run, with excellent recovery of 39% concentrate by sink-float. Tails are running a little over 2% Mn and jigs and tables recover a 44% concentrate from the sands. Final blend is + 40% Mn concentrate.

The Black Diamond was operated as an underground vein carrying + 15% Mn across 8 feet. It has been opened as an open pit carrying + 12% Mn across 25 feet. Ore tends to run high barite on the hanging wall and recovery by sink float is lowered due to presence of sooty wad. Mine run grade is commercial under present conditions and sink float and jigging recover a + 40% product.

MILL: Twenty ton per hour HMS plant with jigs and tables.

OPERATOR: Floyd Brown & Dale Robinette - lessors from Sitton Minerals & Development Co.