



CONTACT INFORMATION

Mining Records Curator
Arizona Geological Survey
1520 West Adams St.
Phoenix, AZ 85007
602-771-1601
<http://www.azgs.az.gov>
inquiries@azgs.az.gov

The following file is part of the

Arizona Department of Mines and Mineral Resources Mining Collection

ACCESS STATEMENT

These digitized collections are accessible for purposes of education and research. We have indicated what we know about copyright and rights of privacy, publicity, or trademark. Due to the nature of archival collections, we are not always able to identify this information. We are eager to hear from any rights owners, so that we may obtain accurate information. Upon request, we will remove material from public view while we address a rights issue.

CONSTRAINTS STATEMENT

The Arizona Geological Survey does not claim to control all rights for all materials in its collection. These rights include, but are not limited to: copyright, privacy rights, and cultural protection rights. The User hereby assumes all responsibility for obtaining any rights to use the material in excess of "fair use."

The Survey makes no intellectual property claims to the products created by individual authors in the manuscript collections, except when the author deeded those rights to the Survey or when those authors were employed by the State of Arizona and created intellectual products as a function of their official duties. The Survey does maintain property rights to the physical and digital representations of the works.

QUALITY STATEMENT

The Arizona Geological Survey is not responsible for the accuracy of the records, information, or opinions that may be contained in the files. The Survey collects, catalogs, and archives data on mineral properties regardless of its views of the veracity or accuracy of those data.

07/18/88

ARIZONA DEPARTMENT OF MINES AND MINERAL RESOURCES FILE DATA

PRIMARY NAME: AMERICAN FLAG

ALTERNATE NAMES:

BEARCAT GROUP
SILVER LODE
MADRE DEL ORO
LOVEJOY PROPERTY

PINAL COUNTY MILS NUMBER: 720

LOCATION: TOWNSHIP 10 S RANGE 16 E SECTION 8 QUARTER W2
LATITUDE: N 32DEG 34MIN 53SEC LONGITUDE: W 110DEG 44MIN 00SEC
TOPO MAP NAME: CAMPO BONITO - 7.5 MIN

CURRENT STATUS: PAST PRODUCER

COMMODITY:

TUNGSTEN
STONE
GOLD LODE
LEAD
MOLYBDENUM
VANADIUM
COPPER

BIBLIOGRAPHY:

ADMMR AMERICAN FLAG FILE
DALE, V.B., TUNGSTEN DEPTS. OF YUMA, MARICOPA
PINAL AND GRAHAM COS. USGS RI 5516, P. 49-52
& MAPS
~~ADMMR FILES~~

AMERICAN FLAG

PINAL COUNTY
T10S R16E Sec. 8

USBM RI 5516 (Bear Cat Group) p. 49-52
USBM RI 5516 (Map - Oakleaf)

USBM List 1967 - Robert J. Urman, 3747 E. Shaw Butte Drive, Phoenix 85028
ABM Bull p. 34

MILS Sheet sequence number 0040210108 (p. 6393)

Pinal County MILS Index #720

AKA: Bearcat Group, Silver Lode, Madre Del Oro, Lovejoy Property

Campo Bonito 7.5' Topo (included in file)

T. 9 S
T. 10 S

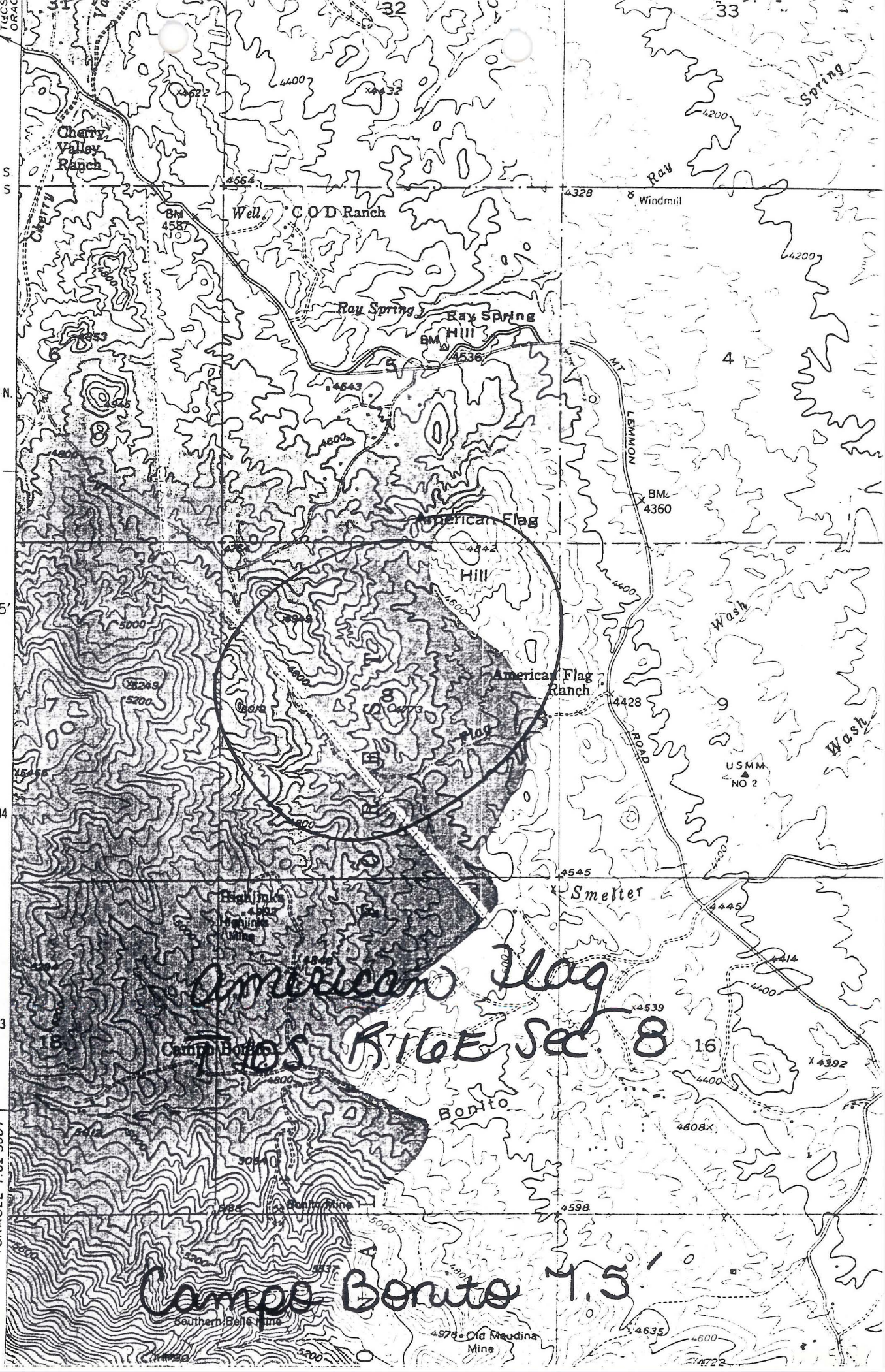
3606000m.N.

35'

3604

3603

3849 III
(ORACLE 1:62 500)



American Flag Hill
R16E Sec 8

Campo Bonito 7.5'

Southern Bell Mine
4976 Old Medina Mine

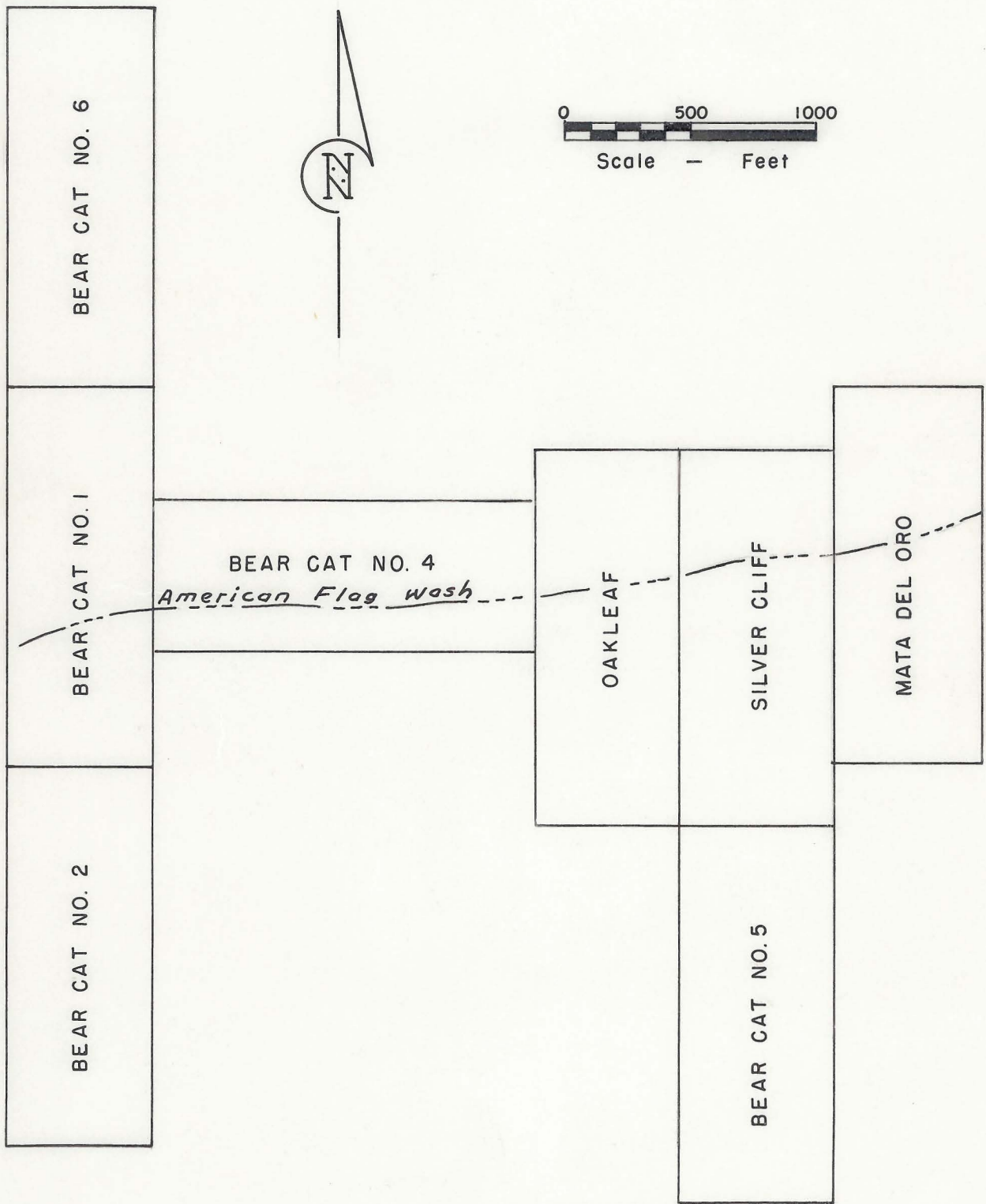


Figure 18- Bear Cat group, Pinal County, Arizona

- REFERENCE 1 F1 < USBM FILE DATA C 2 #481 >
- REFERENCE 2 F2 < ABGMT-USBM FILE DATA >
- REFERENCE 3 F3 < USGS BULLETIN 1218, 1967 >
- REFERENCE 4 F4 < ADMR AMERICAN FLAG MINE FILE >
- NS < DIKES >

U.S. CRIB-SITE FORM

RECORD IDENTIFICATION

RECORD NUMBER #10 < > RECORD TYPE #20 < X.M. > DEPOSIT NUMBER #40 < >
 REPORT DATE #1 < 8.3.04 > INFORMATION SOURCE #30 < 1.2 > FILE LINK IDENT. #80 < USBM-0040210108 >
 (YR. MO.)
 REPORTER(SUPERVISOR) #2 < BEST DON, E > (last, first, middle initial)
 REPORTER AFFILIATION #6 < ABGMT > SITE NAME #10 < AMERICAN FLAG MINE >
 SYNONYMS #11 < LOVE JOY, BEARCAT >

LOCATION

MINING DISTRICT/AREA #30 < ORACLE DISTRICT >
 COUNTY #60 < PINAL COUNTY > STATE #80 < A.Z. > COUNTRY #40 < U.S. >
 PHYSIOGRAPHIC PROV #63 < 1.2.V. >
 DRAINAGE AREA #62 < 1.5.0.5.0.2.0.3.V. >
 QUADRANGLE NAME #90 < CAMPO BONITO (1.9.7.2.) > LAND STATUS #64 < 4.1.V. (1.9.7.9.) >
 SECOND QUAD NAME #92 < () > QUADRANGLE SCALE #100 < 74.0.0. >
 ELEVATION #107 < 4.6.9.0.V. > SECOND QUAD SCALE #91 < >

UTM
 NORTHING #120 < 3.6.0.4.0.2.2 >
 EASTING #130 < 5.2.5.0.2.8 >
 ZONE NUMBER #110 < +1.2 >

ACCURACY
 ACCURATE #ACC (circle)
 ESTIMATED UTM USED FOR TWO ADITS IN SOUTH HALF SECTION 8.

GEODETTIC
 LATITUDE #70 < > N
 LONGITUDE #80 < > W

CADASTRAL

TOWNSHIP(S) #77 < 0.1.0.3.V. > RANGE(S) #78 < 0.1.6.E. >
 SECTION(S) #79 < 8 >
 SECTION FRACTION(S) #76 < NE OF SW >
 MERIDIAN(S) #81 < SALT RIVER AND 61A >

POSITION FROM NEAREST PROMINENT LOCALITY #82 < 3/4 OF A MILE SW OF AMERICAN HILL >
 LOCATION COMMENTS #83 < USBM GIVES SAME UTM EASTING BUT GIVES UTM NORTHING AS 3604722. >

* ESSENTIAL INFORMATION
 + ESSENTIAL SOMETIMES OR HIGHLY RECOMMENDED

COMMODITIES PRESENT C10 < C.U. V.A.G. V.P.B. V. >
 ORE MINERALS C30 < FREE SILVER, CAPRYLITE, GALENA >
 COMMODITY SUBTYPES C41 < >
 GEN. ANALYTICAL DATA C43 < >
 COM. INFO. COMMENTS C50 < >

SIGNIFICANCE

	PRODUCER	NON-PRODUCER
MAJOR PRODUCTS	MAJOR < C.U. V.A.G. V.P.B. V. >	MAIN COMMODITIES PRESENT C11 < >
MINOR PRODUCTS	MINOR < A.U. V.P.B. V. >	MINOR COMMODITIES PRESENT C12 < >
POTENTIAL PRODUCTS	POTEN < >	
OCCURRENCES	OCCUR < >	OCCUR < >

*PRODUCTION

PRODUCTION (circle) PRODUCTION SIZE SMALL MED LGE (circle one) PRODUCTION UND NO (circle one)

*STATUS

EXPLORATION OR DEVELOPMENT

PRODUCER NON-PRODUCER
 STATUS AND ACTIVITY A20 < 4 > STATUS AND ACTIVITY A20 < >

DISCOVERER L20 < >
 YEAR OF DISCOVERY L10 < > NATURE OF DISCOVERY L30 < B > YEAR OF FIRST PRODUCTION L40 < 1901 > YEAR OF LAST PRODUCTION L45 < 1961 >
 PRESENT/LAST OWNER A12 < ED BURNETT (1958) >
 PRESENT/LAST OPERATOR A13 < >
 EXPL./DEV.COMMENTS L110 < OPERATORS INCLUDED J. O. BURGESS AND HAZEL BURNETT. CLAIMS EXTEND NORTHWARD INTO SECTION 5. WORKINGS DESCRIBED ARE PROBABLY THOSE ON SILVER LOPE CLAIM >

DESCRIPTION OF DEPOSIT

DEPOSIT TYPE(S) C40 < VEIN/SHEAR ZONE >
 DEPOSIT FORM/SHAPE M10 < >
 DEPTH TO TOP M20 < > UNITS M21 < > MAXIMUM LENGTH M40 < > UNITS M41 < >
 DEPTH TO BOTTOM M30 < > UNITS M31 < > MAXIMUM WIDTH M50 < > UNITS M51 < >
 DEPOSIT SIZE M18 < SMALL > M18 < MEDIUM > M18 < LARGE > (circle one) MAXIMUM THICKNESS M60 < > UNITS M61 < >
 STRIKE M70 < > DIP M80 < >
 DIRECTION OF PLUNGE M100 < > PLUNGE M90 < >
 DEP. DESC. COMMENTS M110 < >

DESCRIPTION OF WORKINGS

Workings are: SURFACE M120 UNDERGROUND M130 BOTH M140 (circle one) OVERALL LENGTH M190 < > UNITS M191 < >
 DEPTH BELOW SURFACE M160 < > UNITS M161 < > OVERALL WIDTH M200 < > UNITS M201 < >
 LENGTH OF WORKINGS M170 < > UNITS M171 < > OVERALL AREA M210 < > UNITS M211 < >
 DESC. OF WORK. COM. M220 < INCLINED SHAFT 165 FT LONG, 100 FT OF ORIENTAL AND STOPS AT 75 FT LEVEL >

GEOLOGY

*AGE OF HOST ROCK(S) K1 < P.R.E.C. >
 *HOST ROCK TYPE(S) K1A < GRANITE (QUARTZ MONZONITE) AND DIABASE >
 *AGE OF IGNEOUS ROCK(S) K2 < >
 *IGNEOUS ROCK TYPE(S) K2A < >
 *AGE OF MINERALIZATION K3 < L.C.R.E.T.-T.E.R.T.V. >
 *PERT. MINERALS (NOT ORE) K4 < QUARTZ >
 *ORE CONTROL/LOCUS K5 < >
 *MAJ. REG. TRENDS/STRUCT. N6 < 1 TO 1/2 MILES N.E. WNW TRENDSING TROGUL FAULT, PREC. DIABASE AND APLITE IN NW TRENDSING >
 *TECTONIC SETTING N15 < >
 *SIGNIFICANT LOCAL STRUCT. N70 < NE TRENDSING FAULT MAPPED THROUGH MINE AREA >
 *SIGNIFICANT ALTERATION N75 < >
 *PROCESS OF CONC./ENRICH. N80 < >
 *FORMATION AGE N90 < >
 *FORMATION NAME N90A < >
 SECOND FM AGE N95 < >
 SECOND FM NAME N95A < >
 *IGNEOUS UNIT AGE N50 < >
 *IGNEOUS UNIT NAME N50A < >
 SECOND IG. UNIT AGE N55 < >
 SECOND IG. UNIT NAME N55A < >
 GEOLOGY COMMENTS N95 < MINERALIZATION RELATED TO LCRET-TEST GRANODIORITE INTRUSION PERIOD. YOUNGER PORPHYRIES ARE FOUND 2 TO 3 MILES NORTH OF MINE, AND 2 MILES SOUTH, SOUTH OF THE TROGUL FAULT. >

GENERAL COMMENTS

GENERAL COMMENTS GEN < SEE BEAR CAT GROUP, FOR CLAIMS WHICH PRODUCED MO, W AND V. THESE CLAIMS ARE THE SAME GROUP AS THE AMERICAN FLAG, HOWEVER THE CU-AG-PB PRODUCING MINE IS DIFFERENT FROM THE MO-W-V PRODUCER DESCRIBED SEPARATELY. >

DEPARTMENT OF MINERAL RESOURCES
STATE OF ARIZONA
FIELD ENGINEERS REPORT

Mine American Flag

Date March 12, 1958

District Oracle (Old Hat) Dist., Pinal County

Engineer Axel L. Johnson

Subject: Field Engineers Report. Information from Edson Burnett. No visit.

Location Sec. 5 and 8 -- T 10 S -- R 16 E -- Starting from Oracle, drive about 3½ miles on the Oracle Mt. Lemmon Road, and turn left driving a short distance to the property.

Number of Claims 8 unpatented claims

Owner Edson Burnett, Box 176, Oracle, Arizona

Principal Minerals Gold, Silver, Sheelite

Present Mining Activities Ore production in stope: 1 man working (owner).

Ore Values Reported by Mr. Burnette to average 35 ozs. Silver and ½ oz. of Gold per ton or a value of about \$45.00 per ton.

Milling and Marketing Facilities No mill on the property. No arrangements made yet with any smelter for the purchase of the ore.

Mine Workings

- (1) 1 inclined shaft -- 165 ft. deep on the incline.
- (2) 100 ft. of drift on the 75 ft. level.
- (3) 1 stope above the 75 ft. level.

Owner has 1 carload of ore ready to ship.

Proposed Plans Mr. Burnett plans to mine the ore himself and ship same to a smelter.

General Remarks Mr. Burnett inquired about smelter terms on ore purchases at the various smelters. Field engineer showed Mr. Burnett "Information for Prospective Shippers of Arizona Copper-Lead-Zinc Ores and Concentrates", issued by the Dept. of Mineral Resources, April, 1956.

MB-22 BEAR CAT MINE - E. Lovejoy, Box 23, Oracle, Az.

Your name and address has been furnished to -
S. R. RAMSAY, 607 Sabine St., Houston, Texas

who has made request for the same in reference to your
property listed with the

DEPARTMENT OF MINERAL RESOURCES

J. S. Coupal, Director

DEPARTMENT OF MINERAL RESOURCES

News Items

Date March 14, 1940

Mine Bearcat Group

Location 5 Mi. SE of Oracle (Pinal County)

Owner Earl B. Lovejoy

Address Oracle, Arizona

Operating Co.

Address

Pres.

Genl. Mgr.

Mine Supt.

Principal Metals Gold, silver, lead, tungsten, molybdenum and vanadium.

Men Employed

Production Rate Intermittent

Mill Type & Capacity Gibson (12-ton) with two home-made table and amalgamation plate.

Power, Amt. & Type 5 h.p. gasoline engine.

Signed

(Over)

M.D. - 2.2

DEPARTMENT OF MINERAL RESOURCES
STATE OF ARIZONA
OWNERS MINE REPORT

Date 7/12/39

Mine Bear Cat Group
 District Old Hat Location American Flag Canyon 5 miles
 Former name American Flag
 Owner Earl B. Lovejoy Address Oracle - Box 23
 Operator Address
 President Gen. Mgr.
 Mine Supt. Mill Supt.
 Principal Metals Silver, lead, gold, molybdenum, tungsten Men Employed
 Production Rate Mill: Type & Cap.
 Power: Amt. & Type
 Operations: Present Development work

Operations Planned

Number Claims, Title, etc.

Bear Cat No. 1, No. 2, No. 4 8 claims unpatented on Forest
Madre del Oro, Silver Lode
1,2,3, & 4

Description: Topog. & Geog. Rolling Hills - 5 miles S.E. of Oracle - on Mt. Lemmon Highway

Mine Workings: Amt. & Condition

150 ft. shaft & tunnels - poor

Geology & Mineralization

Series of Quartz veins in granite

Ore: Positive & Probable, Ore Dumps, Tailings

Bear Cat Group - molybdenum, gold & silver & Vanadium
Silver Lode * Silver and some gold

Mine, Mill Equipment & Flow Sheet

Road Conditions, Route

Good - Mt. Lemmon Highway from Oracle to American Flag Ranch - then up
Canyon

Water Supply State water right for mill and other uses

Brief History

Special Problems, Reports Filed

Remarks

If property for sale: Price, terms and address to negotiate.

No - for lease

Signed Earl B. Lovejoy

Use additional sheets if necessary.