



## **CONTACT INFORMATION**

Mining Records Curator  
Arizona Geological Survey  
1520 West Adams St.  
Phoenix, AZ 85007  
602-771-1601  
<http://www.azgs.az.gov>  
[inquiries@azgs.az.gov](mailto:inquiries@azgs.az.gov)

The following file is part of the

Arizona Department of Mines and Mineral Resources Mining Collection

## **ACCESS STATEMENT**

These digitized collections are accessible for purposes of education and research. We have indicated what we know about copyright and rights of privacy, publicity, or trademark. Due to the nature of archival collections, we are not always able to identify this information. We are eager to hear from any rights owners, so that we may obtain accurate information. Upon request, we will remove material from public view while we address a rights issue.

## **CONSTRAINTS STATEMENT**

The Arizona Geological Survey does not claim to control all rights for all materials in its collection. These rights include, but are not limited to: copyright, privacy rights, and cultural protection rights. The User hereby assumes all responsibility for obtaining any rights to use the material in excess of "fair use."

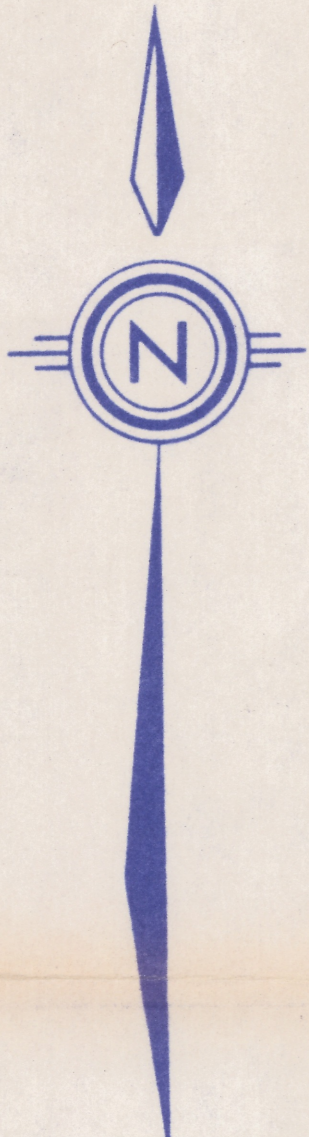
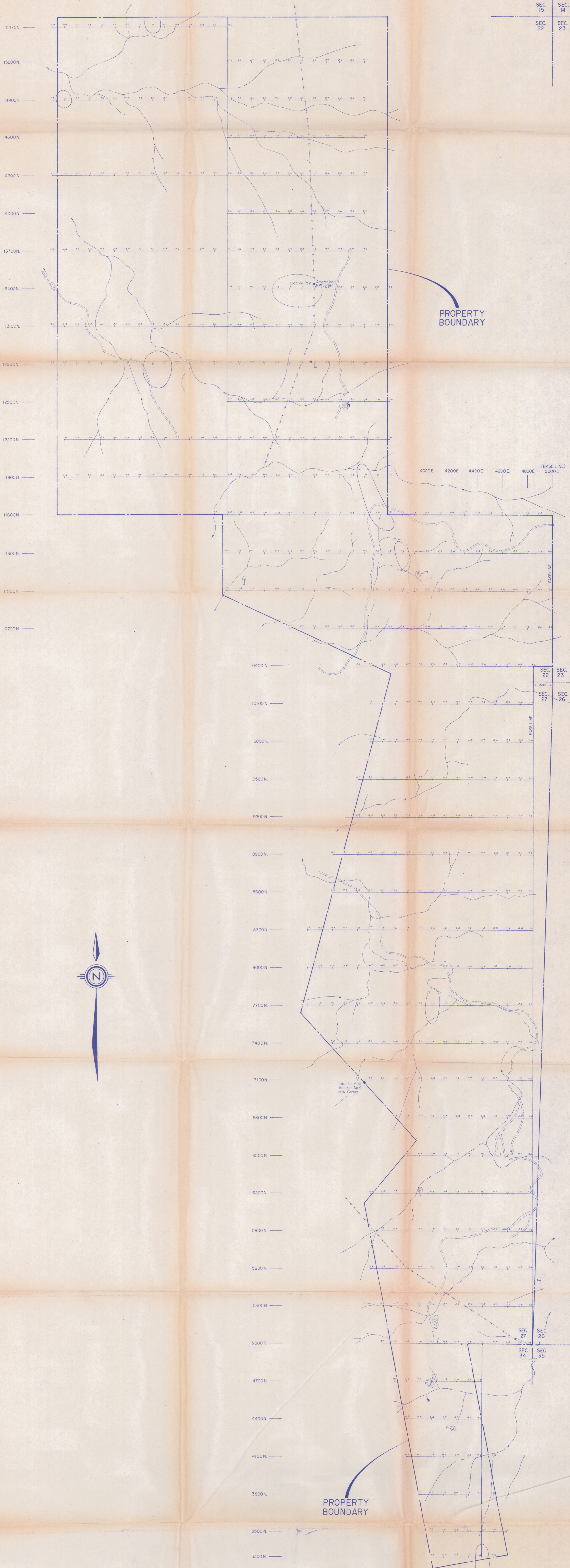
The Survey makes no intellectual property claims to the products created by individual authors in the manuscript collections, except when the author deeded those rights to the Survey or when those authors were employed by the State of Arizona and created intellectual products as a function of their official duties. The Survey does maintain property rights to the physical and digital representations of the works.

## **QUALITY STATEMENT**

The Arizona Geological Survey is not responsible for the accuracy of the records, information, or opinions that may be contained in the files. The Survey collects, catalogs, and archives data on mineral properties regardless of its views of the veracity or accuracy of those data.

1000E 1200E 1400E 1600E 1800E 2000E 2200E (BASE LINE) 2400E 2600E 2800E 3000E 3200E 3400E 3600E 3800E

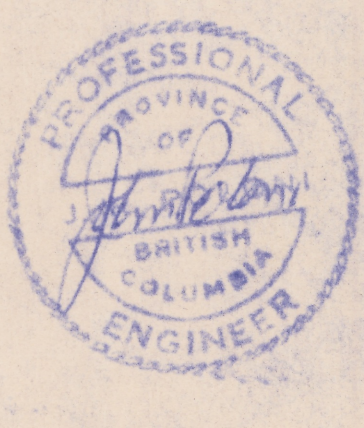
SEC. 15 SEC. 14  
SEC. 22 SEC. 23



**LEGEND**

- LOCATION POST
  - ADIT
  - TRENCH OR PIT
  - FENCE
  - ROAD
- ANOMALOUS PARAMETERS**  
MEAN 0.67 PPM  
ANOMALOUS 134 PPM

3200E 3400E 3600E 3800E 4000E 4200E 4400E 4600E 4800E 5000E (BASE LINE)



PERMIAN RESOURCE CORP.  
**AMAZON GROUP**  
**SOIL GEOCHEMICAL PLAN**  
**SILVER ppm**  
 BLACK ROCK MINING DISTRICT  
 YAVAPAI COUNTY, ARIZONA

JOHN R. POLONI & ASSOCIATES LTD.  
 DRAWN J.R.P. CHECKED J.R.P. PLAN No.  
 SCALE 1" = 200' DATE December 28, 1993 7