



CONTACT INFORMATION

Mining Records Curator
Arizona Geological Survey
1520 West Adams St.
Phoenix, AZ 85007
602-771-1601
<http://www.azgs.az.gov>
inquiries@azgs.az.gov

The following file is part of the

Arizona Department of Mines and Mineral Resources Mining Collection

ACCESS STATEMENT

These digitized collections are accessible for purposes of education and research. We have indicated what we know about copyright and rights of privacy, publicity, or trademark. Due to the nature of archival collections, we are not always able to identify this information. We are eager to hear from any rights owners, so that we may obtain accurate information. Upon request, we will remove material from public view while we address a rights issue.

CONSTRAINTS STATEMENT

The Arizona Geological Survey does not claim to control all rights for all materials in its collection. These rights include, but are not limited to: copyright, privacy rights, and cultural protection rights. The User hereby assumes all responsibility for obtaining any rights to use the material in excess of "fair use."

The Survey makes no intellectual property claims to the products created by individual authors in the manuscript collections, except when the author deeded those rights to the Survey or when those authors were employed by the State of Arizona and created intellectual products as a function of their official duties. The Survey does maintain property rights to the physical and digital representations of the works.

QUALITY STATEMENT

The Arizona Geological Survey is not responsible for the accuracy of the records, information, or opinions that may be contained in the files. The Survey collects, catalogs, and archives data on mineral properties regardless of its views of the veracity or accuracy of those data.

08/05/91

ARIZONA DEPARTMENT OF MINES AND MINERAL RESOURCES FILE DATA

PRIMARY NAME: ALTA PATENTED CLAIM

ALTERNATE NAMES:

PATENT NO. 277

YAVAPAI COUNTY MILS NUMBER: 1268C

LOCATION: TOWNSHIP 11 N RANGE 1 W SECTION 25 QUARTER S2
LATITUDE: N 34DEG 15MIN 15SEC LONGITUDE: W 112DEG 18MIN 54SEC
TOPO MAP NAME: BATTLE FLAT - 7.5 MIN

CURRENT STATUS: UNKNOWN

COMMODITY:

SILVER
COPPER
LEAD
GOLD

BIBLIOGRAPHY:

BLM MINING DISTRICT SHEET 217
YAVAPAI MAGAZINE JUNE 1918 P 4
MAP OF JEROME, PRESCOTT, MAYER MINING DIST.
1917 SHARLOT HALL MUSEUM PRESCOTT
ADMMR ALTA PATENTED CLAIM FILE

ALTA PATENTED CLAIM

REFERENCES

YAVAPAI COUNTY
BRADSHAW DISTRICT
T11N R1W Sec. 25

Yavapai County MILS Index #1268C

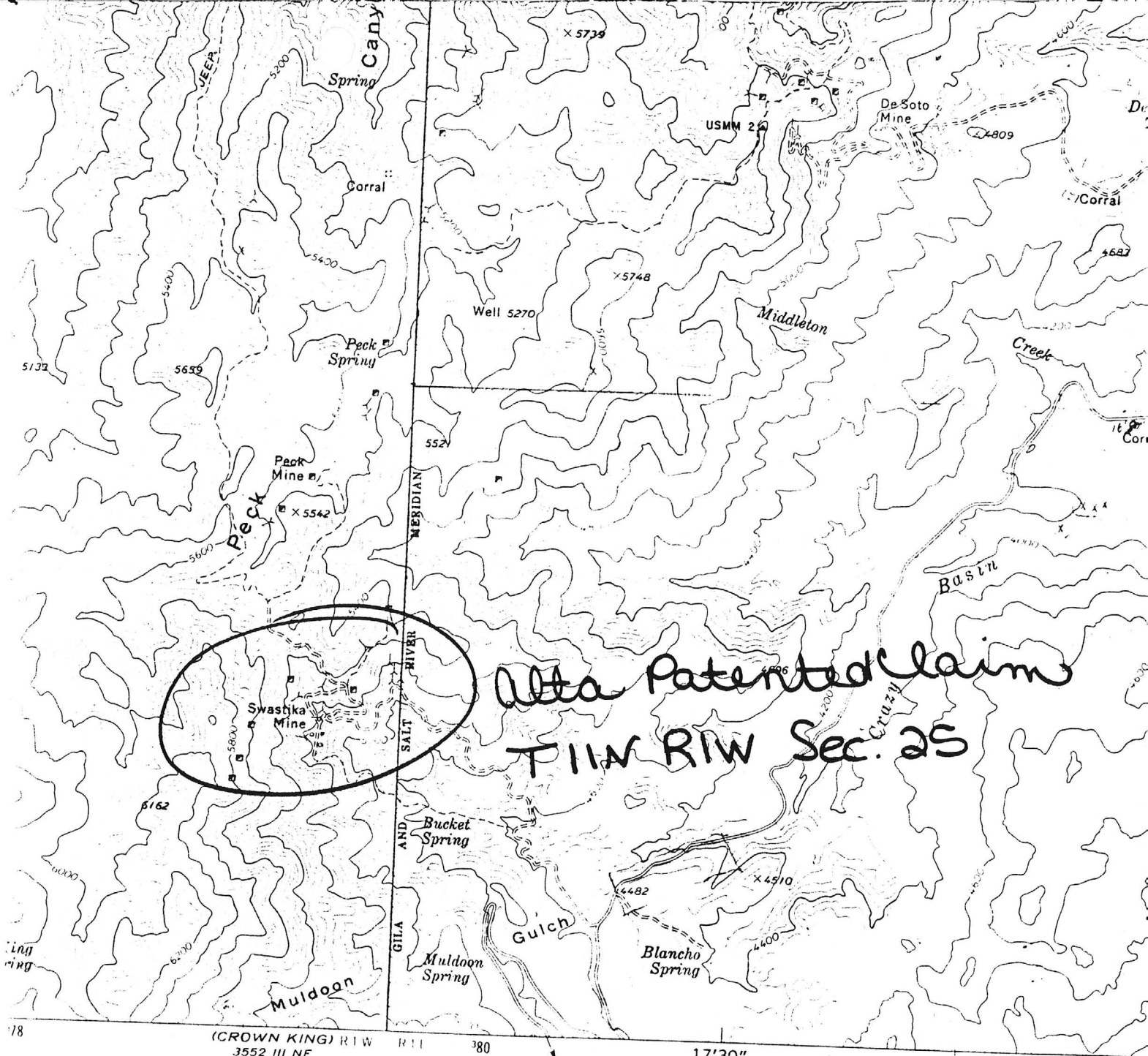
BLM Mining District Sheet #217

Yavapai Magazine June 1918, p. 4

Map of Jerome, Prescott, Mayer Mining District 1917

MILS Sheet Sequence number 0040250105

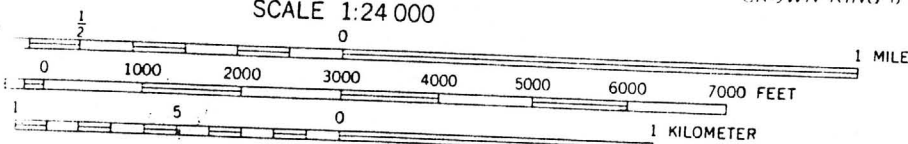
Battle Flat 7.5' Topo (included in file)



Alta Patented Claim
T11W RIW Sec. 25

178 (CROWN KING) RIW 3552 III NE 380 17'30" 382

SCALE 1:24 000



CONTOUR INTERVAL 40 FEET
NATIONAL GEODETIC VERTICAL DATUM OF 1929

THIS MAP COMPLIES WITH NATIONAL MAP ACCURACY STANDARDS
S. GEOLOGICAL SURVEY, DENVER, COLORADO 80225, OR RESTON, VIRGINIA 22092



QUADRANGLE LOCATION

ARIZONA
& GATE
1315 N. Central

Battle Flat 7.5'

To Bank

ALTA MINE

April 1925 visited the Alta Callm, which is owned by John Duke of Prescott and being worked under bond and lease by Vic Strum. Strum is drifting in on a quartzite vein in the Yavapai schist. His drift is in a little over 200' and says he has 15' more of drifting and 25' of raising to tap a 110 ft. shaft which is on the vein farther up the hill. H has three shoots of ore in the vein, all approximately one foot wide which he claims will run from 20 to 400 oz. silver and average 150 ozs. also carrying some gold. These shoots carried some galena, pyrite, and silver chloride.

The ore shoot in the shaft was continuous for a depth of about 80' but varied in thickness from six inches to 14". Some little stoping had been done on the wider portions of the shoot by earlier leases, but in no place was more than 20' from the shaft.

(Signed) D. F. Reed.

NOTE BY G. M. COLVOCORESSES

December 1937.

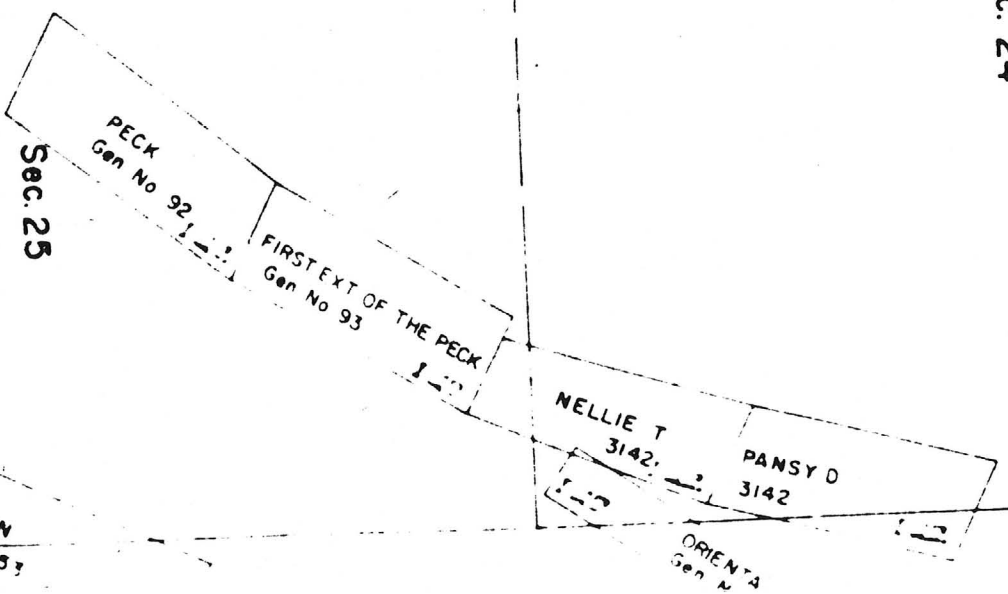
This mine is located near the top of a steep hill above the Swastika Mine in the Bradshaw Mts. Apparently a small shoot of pay ore was found and shipped but little or no work has been done there for the past ten years.

TAKEN FROM THE MINES BOOK OF G. M. COLVOCORESSES

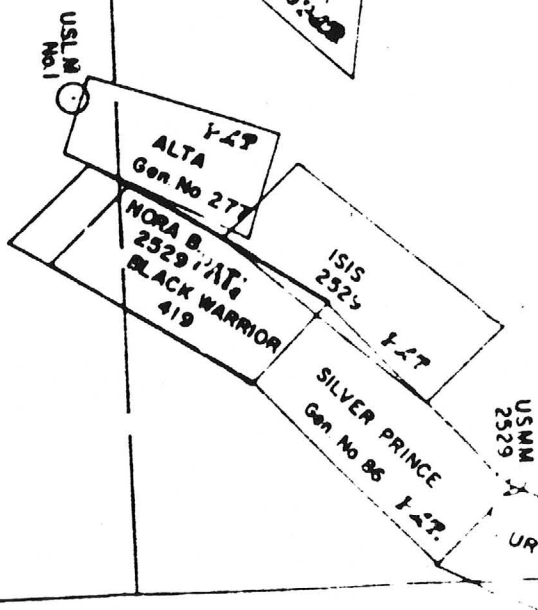
SE 1/4, T. 11 N., R. 1 W.
PINE GROVE DIST.
PECK DIST.

217

Sec. 24



Sec. 25



Sec. 36