



CONTACT INFORMATION

Mining Records Curator
Arizona Geological Survey
1520 West Adams St.
Phoenix, AZ 85007
602-771-1601
<http://www.azgs.az.gov>
inquiries@azgs.az.gov

The following file is part of the

Arizona Department of Mines and Mineral Resources Mining Collection

ACCESS STATEMENT

These digitized collections are accessible for purposes of education and research. We have indicated what we know about copyright and rights of privacy, publicity, or trademark. Due to the nature of archival collections, we are not always able to identify this information. We are eager to hear from any rights owners, so that we may obtain accurate information. Upon request, we will remove material from public view while we address a rights issue.

CONSTRAINTS STATEMENT

The Arizona Geological Survey does not claim to control all rights for all materials in its collection. These rights include, but are not limited to: copyright, privacy rights, and cultural protection rights. The User hereby assumes all responsibility for obtaining any rights to use the material in excess of "fair use."

The Survey makes no intellectual property claims to the products created by individual authors in the manuscript collections, except when the author deeded those rights to the Survey or when those authors were employed by the State of Arizona and created intellectual products as a function of their official duties. The Survey does maintain property rights to the physical and digital representations of the works.

QUALITY STATEMENT

The Arizona Geological Survey is not responsible for the accuracy of the records, information, or opinions that may be contained in the files. The Survey collects, catalogs, and archives data on mineral properties regardless of its views of the veracity or accuracy of those data.

10/27/94

ARIZONA DEPARTMENT OF MINES AND MINERAL RESOURCES FILE DATA

PRIMARY NAME: AL SCHMID COPPER

ALTERNATE NAMES:

YAVAPAI COUNTY MILS NUMBER: 324

LOCATION: TOWNSHIP 8 N RANGE 4 W SECTION 23 QUARTER SW
LATITUDE: N 34DEG 01MIN 23SEC LONGITUDE: W 112DEG 38MIN 43SEC
TOPO MAP NAME: SAM POWELL PEAK - 7.5 MIN

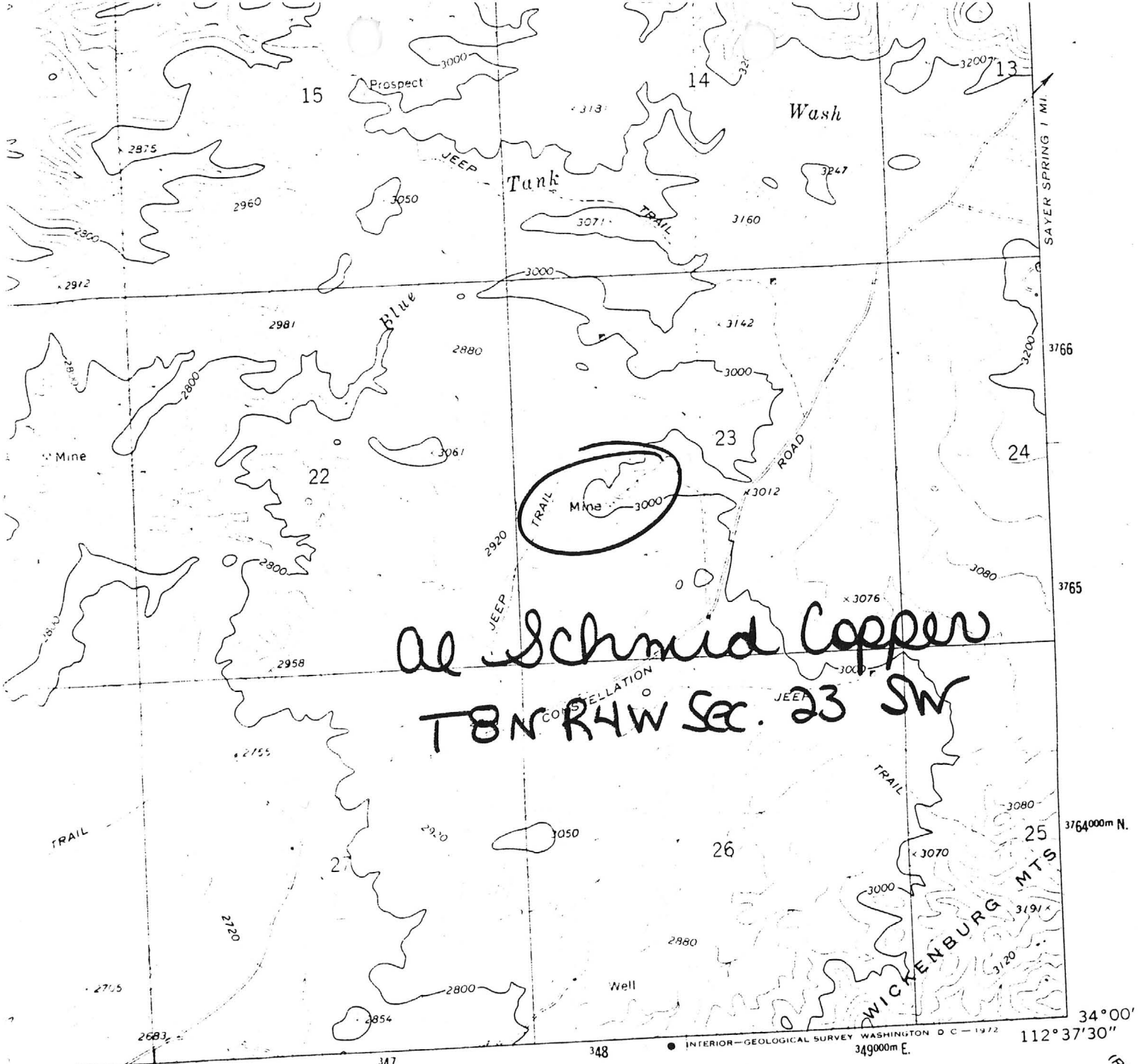
CURRENT STATUS: EXP PROSPECT

COMMODITY:

COPPER
GOLD

BIBLIOGRAPHY:

USGS SAM POWELL PEAK QUAD
ADMMR AL SCHMID COPPER FILE



al Schmid Copper
 T8N R4W Sec. 23 SW



ROAD CLASSIFICATION

Light-duty road, all weather, improved surface	Unimproved road, fair or dry weather
—————	-----

SAM POWELL PEAK, ARIZ.
 N3400—W11237.5/7.5

1969

AMS 3452 II SW—SERIES V898

D C. 20242

(RED PICA 3451/1.8)

DEPARTMENT OF MINERAL RESOURCES
STATE OF ARIZONA
FIELD ENGINEERS REPORT

Mine Al Schmid Copper

Date May 5, 1952

District 5 m. N. of Wickenburg

Engineer Mark Gemmill

Subject: Present status

No information available as to the owner or property

DEPARTMENT OF MINERAL RESOURCES
STATE OF ARIZONA
OWNERS MINE REPORT

MA-49

Date April 21, 1943

Mine Al Schmid Copper

District : Yavapai Co - Blue Lake Dist

Location 5 miles north of Wickenburg

Former name

Owner Al Schmid

Address Wickenburg

Operator

Address

President

Gen. Mgr.

Mine Supt.

Mill Supt.

Principal Metals^o Copper, Gold. Assays being made
now

Men Employed

Production Rate

Mill: Type & Cap.

Power: Amt. & Type

Operations: Present

New
Prospect only. Has 3 or 4 - 8 to 10 ft. cuts.

Operations Planned Sinking on vein.

Number Claims, Title, etc. Five

Description: Topog. & Geog.

Mine Workings: Amt. & Condition New.

(over)

Geology & Mineralization **Undetermined.**

Ore: Positive & Probable, Ore Dumps, Tailings

Dimensions and Value of Ore body: Has 3' vein blue green - heavy material

Mine, Mill Equipment & Flow Sheet

Road Conditions, Route **Can drive within one-fourth mile.**

Water Supply **Good on property.**

Brief History **Discovered about a year ago.**

Special Problems, Reports Filed **Financing.**

Remarks **About 2 miles S.E. from Altos Gold mine. Operated by Schmid.**

If property for sale: Price, terms and address to negotiate.

Signed.....

Use additional sheets if necessary.