



CONTACT INFORMATION

Mining Records Curator
Arizona Geological Survey
1520 West Adams St.
Phoenix, AZ 85007
602-771-1601
<http://www.azgs.az.gov>
inquiries@azgs.az.gov

The following file is part of the

Arizona Department of Mines and Mineral Resources Mining Collection

ACCESS STATEMENT

These digitized collections are accessible for purposes of education and research. We have indicated what we know about copyright and rights of privacy, publicity, or trademark. Due to the nature of archival collections, we are not always able to identify this information. We are eager to hear from any rights owners, so that we may obtain accurate information. Upon request, we will remove material from public view while we address a rights issue.

CONSTRAINTS STATEMENT

The Arizona Geological Survey does not claim to control all rights for all materials in its collection. These rights include, but are not limited to: copyright, privacy rights, and cultural protection rights. The User hereby assumes all responsibility for obtaining any rights to use the material in excess of "fair use."

The Survey makes no intellectual property claims to the products created by individual authors in the manuscript collections, except when the author deeded those rights to the Survey or when those authors were employed by the State of Arizona and created intellectual products as a function of their official duties. The Survey does maintain property rights to the physical and digital representations of the works.

QUALITY STATEMENT

The Arizona Geological Survey is not responsible for the accuracy of the records, information, or opinions that may be contained in the files. The Survey collects, catalogs, and archives data on mineral properties regardless of its views of the veracity or accuracy of those data.

10/28/94

ARIZONA DEPARTMENT OF MINES AND MINERAL RESOURCES FILE DATA

PRIMARY NAME: ALBERT MACKENZIE PROPERTY

ALTERNATE NAMES:

PINAL COUNTY MILS NUMBER: 350

LOCATION: TOWNSHIP 4 S RANGE 14 E SECTION 8 QUARTER C
LATITUDE: N 33DEG 05MIN 53SEC LONGITUDE: W 110DEG 56MIN 14SEC
TOPO MAP NAME: KEARNY - 7.5 MIN

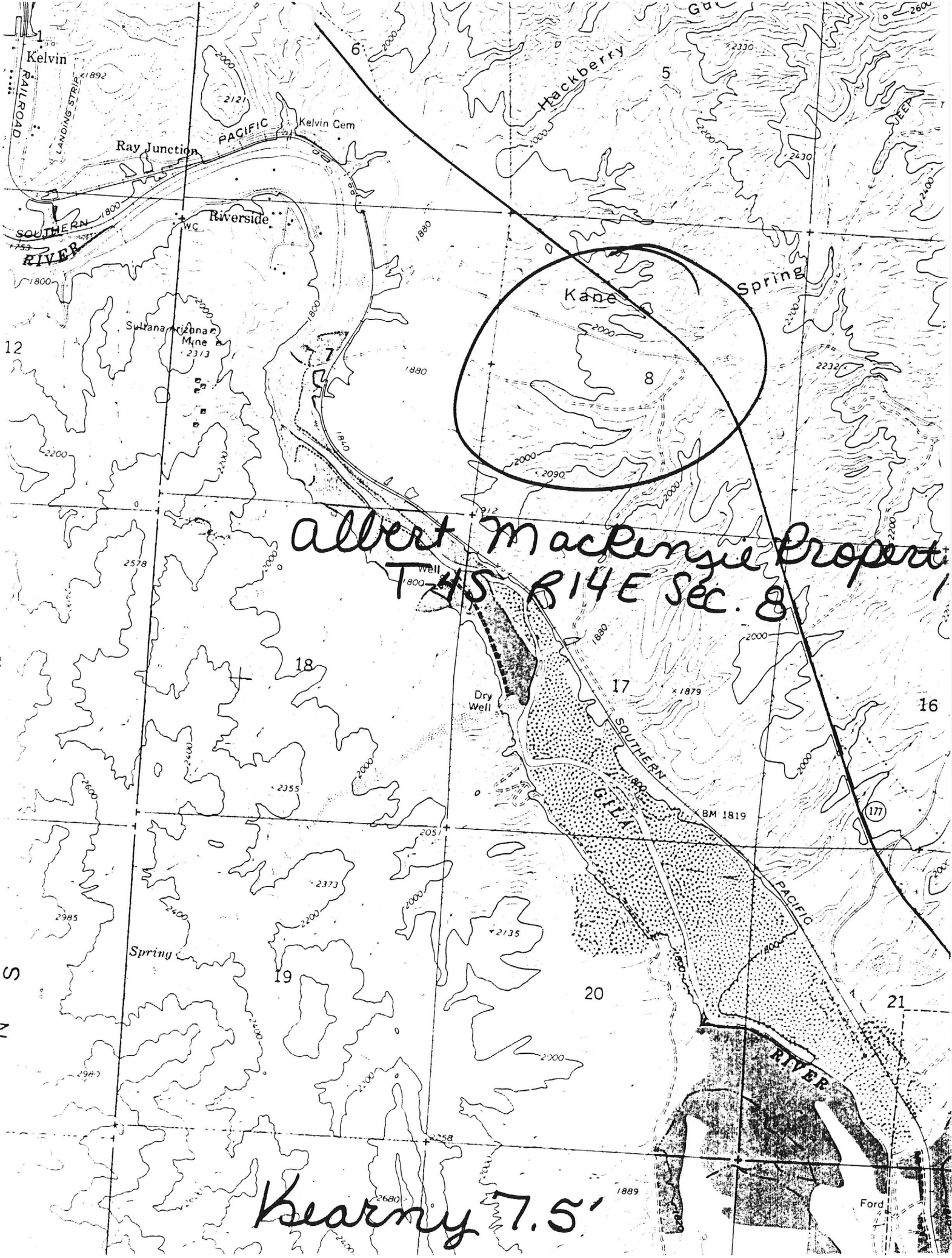
CURRENT STATUS: EXP PROSPECT

COMMODITY:

COPPER SULFIDE
COPPER OXIDE

BIBLIOGRAPHY:

ADMMR ALBERT MACKENZIE PROPERTY FILE



Albert Mackenzie Property
T4S R14E Sec. 8

Kearny 7.5'

ARIZONA PROSPECTORS ASSN.
 SECOND OUTING
 TO BE FEB. 1, 1979, SATURDAY
 AND STAY OVER SUNDAY IF YOU WANT

TURQUISE & CHRISACOLLA

ALBERT MACKENZIE PROPERTY

MEET 9:00-10:00 A.M. ABOUT
 1/2 MILE PAST GILA RIVER BRIDGE

BRING HAMMERS, SLEDGES,
 DRILLS, LUNCH, ETC.
 NO POWDER

GO TO SUPERIOR, TURN
 SOUTH ON HWY. 177
 TO KELVIN JUNCTION,
 THEN FOLLOW MAP.

