



CONTACT INFORMATION

Mining Records Curator
Arizona Geological Survey
1520 West Adams St.
Phoenix, AZ 85007
602-771-1601
<http://www.azgs.az.gov>
inquiries@azgs.az.gov

The following file is part of the

Arizona Department of Mines and Mineral Resources Mining Collection

ACCESS STATEMENT

These digitized collections are accessible for purposes of education and research. We have indicated what we know about copyright and rights of privacy, publicity, or trademark. Due to the nature of archival collections, we are not always able to identify this information. We are eager to hear from any rights owners, so that we may obtain accurate information. Upon request, we will remove material from public view while we address a rights issue.

CONSTRAINTS STATEMENT

The Arizona Geological Survey does not claim to control all rights for all materials in its collection. These rights include, but are not limited to: copyright, privacy rights, and cultural protection rights. The User hereby assumes all responsibility for obtaining any rights to use the material in excess of "fair use."

The Survey makes no intellectual property claims to the products created by individual authors in the manuscript collections, except when the author deeded those rights to the Survey or when those authors were employed by the State of Arizona and created intellectual products as a function of their official duties. The Survey does maintain property rights to the physical and digital representations of the works.

QUALITY STATEMENT

The Arizona Geological Survey is not responsible for the accuracy of the records, information, or opinions that may be contained in the files. The Survey collects, catalogs, and archives data on mineral properties regardless of its views of the veracity or accuracy of those data.

11/01/96

ARIZONA DEPARTMENT OF MINES AND MINERAL RESOURCES FILE DATA

PRIMARY NAME: ALAMO PROCESS PLANT

ALTERNATE NAMES:

YUMA COUNTY MILS NUMBER: 798

LOCATION: TOWNSHIP 11 S RANGE 23 W SECTION 7 QUARTER NW
LATITUDE: N 32DEG 29MIN 36SEC LONGITUDE: W 114DEG 39MIN 51SEC
TOPO MAP NAME: SOUTH OF YUMA - 15 MIN

CURRENT STATUS: UNKNOWN

COMMODITY:

MIL GRAVITY

BIBLIOGRAPHY:

ADMMR ALAMO PROCESS PLANT FILE

ALAMO PROCESS PLANT

YUMA COUNTY
T11S R23W Sec 7 NW

Address: 994 W. 16th Street
Yuma, Arizona 85364
Phone: 783-0382

Millsite: 3821 W. County 23rd St.
Yuma, Az. 85364

Located 13 miles south of Yuma, 6 miles east of San Luis on West County
23rds St. Gravity mill, Tungsten concentrate product, Market to AMAX
Corporation in Iowa

President - Bob Roe
Plant Superintendent - Bill Roe
Mine Superintendent - Craig Vail

MILS Yuma Index #798

AKA: El Alamo (Box E) San Luis, Arizona 85349

A

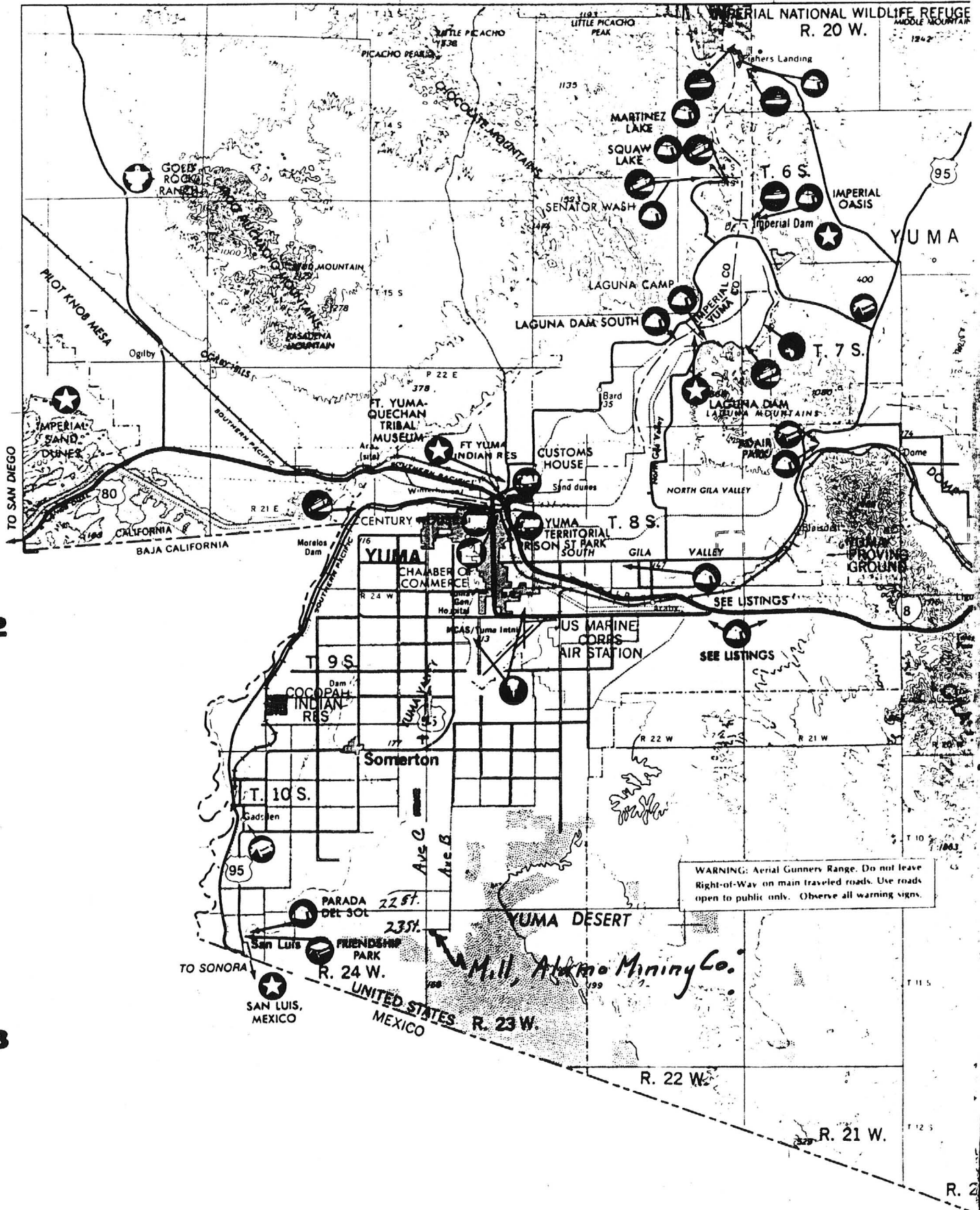
B

C

1

2

3



WARNING: Aerial Gunners Range. Do not leave Right-of-Way on main traveled roads. Use roads open to public only. Observe all warning signs.

Mill, Alamo Mining Co.

UNITED STATES MEXICO

ARIZONA DEPARTMENT OF MINES AND MINERAL RESOURCES

VERBAL INFORMATION SUMMARY (SHORT FORM)

May be Reproduced

May Be Inserted Into Mine File Or Added To "Rumor Page"

1. Information from: Bob Rowe
Address: Alamo Milling
2. Phone: 344-1190
3. Mine: ALAMO MILL
4. ADMMR Mine File: Alamo Process Plant
5. County: Yuma
6. MILS Number: 798
7. Operational Status: Idle
8. Summary of information received, comments, etc.

Bob Rowe reported the sale of the Alamo Mill fell through and he has had to take back the plant. He plans to set it up to run free milling gold ore. It has not been used to run scheelite for a number of years. The plant is equipped with 2 Deister #26 Sand Tables.

He has not yet determined if he would be running any custom material.

Date: Sept. 29, 1988

Ken A. Phillips

PT

ALAMO PROCESS PLANT

YUMA COUNTY

NJN WR 10/11/85: Directory assistance reports that the phone numbers for Alamo Process Plant (f) and Bob Roe have been disconnected with no new number available. One would assume their gravity plant south of Yuma is closed.

Information from the start form of the Office of State Mine Inspector: Alamo Mining Co. Inc., is locating a mill for tungsten concentrates production at the SE corner of County 23rd St. and Avenue C. Starting date is given as August 22, 1983. Robert R. Roe is the mill superintendent.

NJN WR 6/24/83: Doc Burdick called and reported that a company called El Alamo is setting up a gravity mill six miles east of San Luis, but in the United States. The mill will process tungsten ore from a mine in Mexico located about 60 miles east of San Luis and just south of the Cabeza Prieta National Wildlife Refuge. Paul Gardner will be the manager of the operation.

RRB WR 9/16/83: Bob Rowe of Alamo Mining called to locate an assayer in the Phoenix area. They had been using Jacobs in Tucson, but it is inconvenient to send it there and someone had recommended Gold Dome Mining. I read him the list of registered assayers in the Phoenix area and my impressions of them. He reports that they are concentrating tungsten ores from Mexico and shipping to AMAX of Connecticut's new plant in Ohio. They reportedly have a new process in which molybdenum is not a problem. He admitted that it sounded strange but that AMAX said they would take concentrate, the middlings and the tails and that they would extract whatever gold and silver there was and return it to Alamo.

KAP WR 3/16/84: Gary Carpenter, an equipment salesman, explained he is trying to assist the people at Alamo Mining Company solve a milling problem at their tungsten mill near Yuma. Their concentrate is reportedly too high in iron. However, if the feed ore is mixed wolframite-scheelite in gangue, they will have to give up the tungsten in wolframite to keep the iron low. They are currently crushing to minus 14 mesh, then using a table to concentrate the heavies.

RRB WR 7/13/84: Rob Roe of Alamo Mining, Yuma 782-7609, reports that he is importing silicious ore from Sonora, Mexico and wanted names of people to contact at the Arizona smelters which might purchase it.

RRB WR 1/4/85: Visited the mill of the Alamo Mining Co. south of Yuma at County 23rd Street and Avenue C. There was no one at the mill although it had the appearance of current use. Some pictures were taken from outside the fence for the files and a sample of stockpiled ore containing copper oxides and scheelite was taken.

Ramirez



Office of State Mine Inspector

STATE MINE INSPECTOR

705 West Wing, Capitol Building
Phoenix, Arizona 85007
602-255-5971

AUG 15 1983

NOTICE TO ARIZONA STATE MINE INSPECTOR

In compliance with Arizona Revised Statute Section 27-303*, we are submitting this written notice to the Arizona State Mine Inspector (705 West Wing, Capitol Building, Phoenix, Arizona 85007) of our intent to start stop (please circle one) a mining operation.

COMPANY NAME ALAMO MINING CO. INC.

CHIEF OFFICER Robert R. Roe

COMPANY ADDRESS 994 W. 16 St. Yuma Az. 85364

COMPANY TELEPHONE NUMBER (602) 783-0382

MINE OR PLANT NAME ALAMO PROCESS PLANT

MINE OR PLANT LOCATION (including county and nearest town, as well as directions for locating by vehicle)

S. E. corner County 23 St. & Ave. C

3891 W. County 23 St.

Yuma, Az. 85364

TYPE OF OPERATION Mill PRINCIPAL PRODUCT Tungsten Concentrates

STARTING DATE Aug. 22, 1983 CLOSING DATE Aug. 22, 1998

DURATION OF OPERATION 15 years

PERSON SENDING THIS NOTICE Bill Roe

TITLE OF PERSON SENDING THIS NOTICE Mill Sup't.

DATE NOTICE SENT TO STATE MINE INSPECTOR Aug. 2, 1983

*A.R.S. Section 27-303 NOTIFICATION TO INSPECTOR OF BEGINNING OR SUSPENDING OPERATIONS: When mining operations are commenced in any mine or when operations therein are permanently suspended, the operator shall give written notice to the inspector at his office prior to commencement or suspension of operations.

500 V. 11.1
9.1.1 B. 10.1.15

NW 1/4,
Sec. 7,
T 11 S,
R 23 W

ALAMO MINING COMPANY

Office

Mailing address, P.O. Box 6496, Yuma, 85364 - Phone
783-0382 - Employees 15.

Millsite

3821 W. County 23rd St., Yuma, 85364 - Located 13
miles south of Yuma, 6 miles east of San Luis on West
County 23rd St. - Gravity Mill - Tungsten concentrates,
gold and silver - Chemical and assay labs - Refinery,
makes tungstic acid - Markets; AMAX, Kennametal
and Mitsui, Japan.

President.....Bob Roe
Executive Vice PresidentHal Gardner
Secretary-Treasurer.....Lloyd Vivian
Comptroller Ed Tovrea
Plant Superintendent.....Bill Roe
Mine Superintendent.....Jerry Roe

TEMP. COPY, ORIGINALS BEING SCANNED



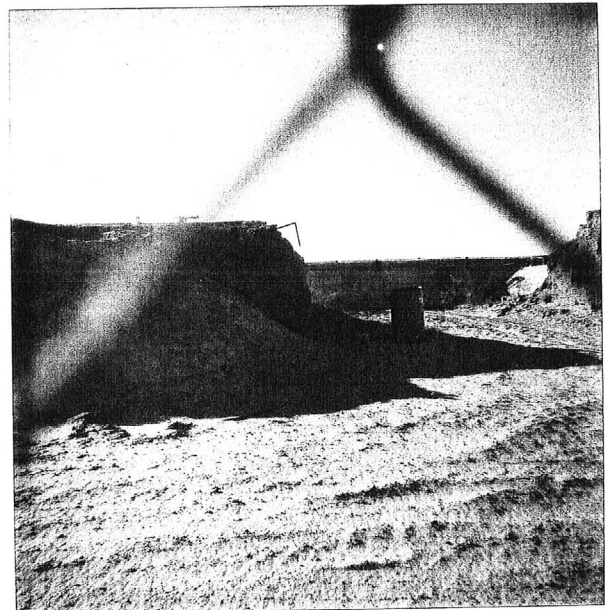
Alamo from E 1/4/85



Alamo from West Side 1/4/85



Alamo from SW Corn 1/4/85



Alamo from E Side 1/4/85







