



CONTACT INFORMATION

Mining Records Curator
Arizona Geological Survey
1520 West Adams St.
Phoenix, AZ 85007
602-771-1601
<http://www.azgs.az.gov>
inquiries@azgs.az.gov

The following file is part of the

Arizona Department of Mines and Mineral Resources Mining Collection

ACCESS STATEMENT

These digitized collections are accessible for purposes of education and research. We have indicated what we know about copyright and rights of privacy, publicity, or trademark. Due to the nature of archival collections, we are not always able to identify this information. We are eager to hear from any rights owners, so that we may obtain accurate information. Upon request, we will remove material from public view while we address a rights issue.

CONSTRAINTS STATEMENT

The Arizona Geological Survey does not claim to control all rights for all materials in its collection. These rights include, but are not limited to: copyright, privacy rights, and cultural protection rights. The User hereby assumes all responsibility for obtaining any rights to use the material in excess of "fair use."

The Survey makes no intellectual property claims to the products created by individual authors in the manuscript collections, except when the author deeded those rights to the Survey or when those authors were employed by the State of Arizona and created intellectual products as a function of their official duties. The Survey does maintain property rights to the physical and digital representations of the works.

QUALITY STATEMENT

The Arizona Geological Survey is not responsible for the accuracy of the records, information, or opinions that may be contained in the files. The Survey collects, catalogs, and archives data on mineral properties regardless of its views of the veracity or accuracy of those data.

PRINTED: 03/18/2003

ARIZONA DEPARTMENT OF MINES AND MINERAL RESOURCES AZMILS DATA

PRIMARY NAME: AJAX

ALTERNATE NAMES:

GILA COUNTY MILS NUMBER: 572

LOCATION: TOWNSHIP 4 N RANGE 15 E SECTION 4 QUARTER S2

LATITUDE: N 33DEG 37MIN 15SEC LONGITUDE: W 110DEG 55MIN 39SEC

TOPO MAP NAME: ROCKINSTRAW MTN - 15 MIN

CURRENT STATUS: EXP PROSPECT

COMMODITY:

URANIUM

COPPER

BIBLIOGRAPHY:

ADMMR AJAX FILE

GILA Co.

UNITED STATES
DEPARTMENT OF THE ARMY
CORPS OF ENGINEERS

ROCKINSTRAW MTN. QUADRANG
ARIZONA-GILA CO.

15 MINUTE SERIES (TOPOGRAPHIC)

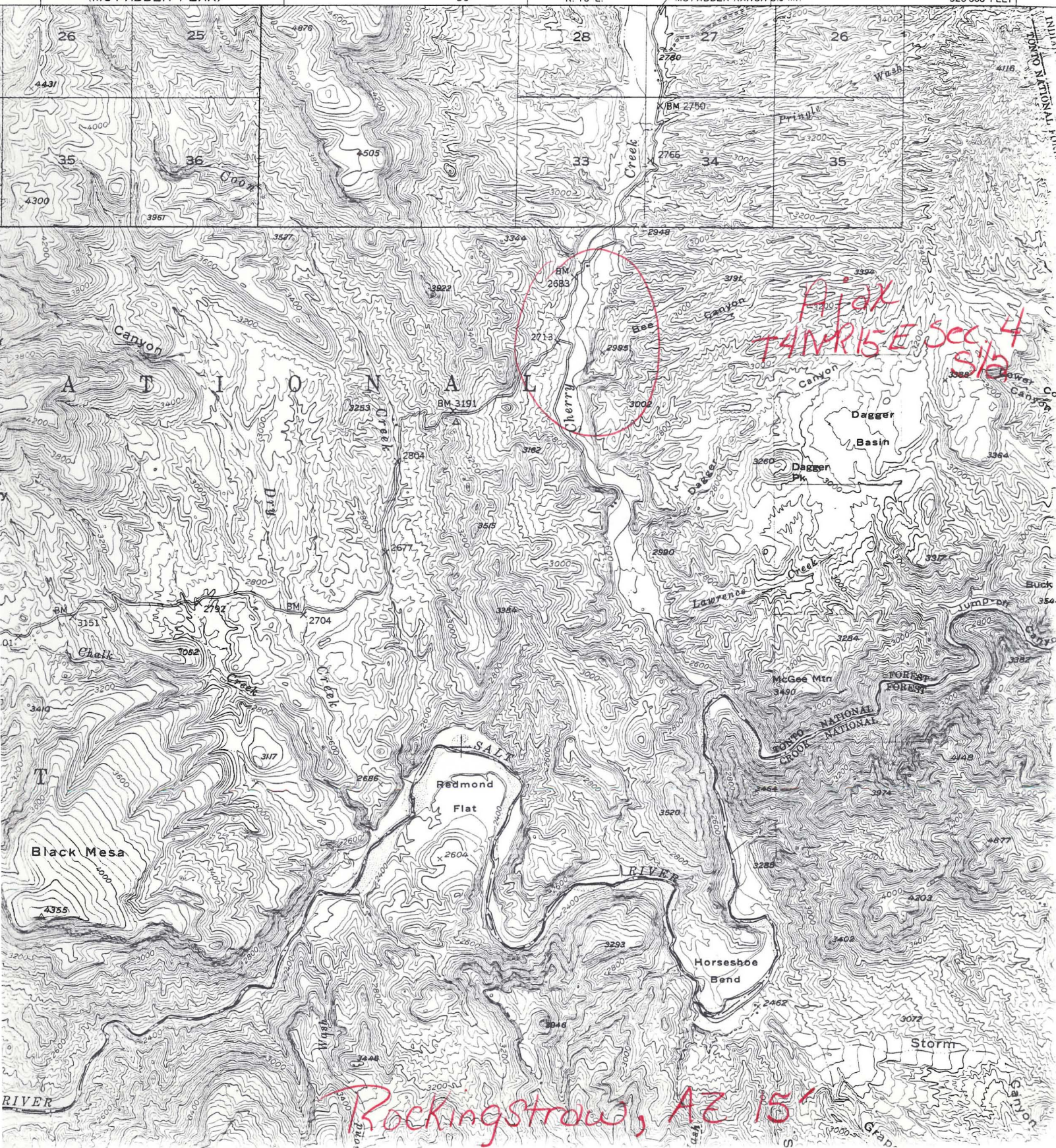
(MC FADDEN PEAK)

50'

R. 15 E.

ELLISON RANCH (END OF ROAD) 5 MI.
MC FADDEN RANCH 9.9 MI.

320 000 FEET



 (International Shasta Resources, Ltd)

INTERNATIONAL SHASTA RESOURCES, LTD.

9/87

1200 W. Pender St.
Vancouver, B.C.
CANADA

SEE: AJAX PROPERTY (FILE) GILA COUNTY

INTERNATIONAL SHASTA RESOURCES LTD.

6/87

Mr. Harry C. Faulkner, President

409-1200 West Pender St.

Vancouver, B.C.

CANADA V6E 2S9

(604) 669-2812

According to World Investment News, June 1987 they
have the Ajax Group, Gila Co., T4N R15E Sec 4,9