



## **CONTACT INFORMATION**

Mining Records Curator  
Arizona Geological Survey  
1520 West Adams St.  
Phoenix, AZ 85007  
602-771-1601  
<http://www.azgs.az.gov>  
[inquiries@azgs.az.gov](mailto:inquiries@azgs.az.gov)

The following file is part of the

Arizona Department of Mines and Mineral Resources Mining Collection

## **ACCESS STATEMENT**

These digitized collections are accessible for purposes of education and research. We have indicated what we know about copyright and rights of privacy, publicity, or trademark. Due to the nature of archival collections, we are not always able to identify this information. We are eager to hear from any rights owners, so that we may obtain accurate information. Upon request, we will remove material from public view while we address a rights issue.

## **CONSTRAINTS STATEMENT**

The Arizona Geological Survey does not claim to control all rights for all materials in its collection. These rights include, but are not limited to: copyright, privacy rights, and cultural protection rights. The User hereby assumes all responsibility for obtaining any rights to use the material in excess of "fair use."

The Survey makes no intellectual property claims to the products created by individual authors in the manuscript collections, except when the author deeded those rights to the Survey or when those authors were employed by the State of Arizona and created intellectual products as a function of their official duties. The Survey does maintain property rights to the physical and digital representations of the works.

## **QUALITY STATEMENT**

The Arizona Geological Survey is not responsible for the accuracy of the records, information, or opinions that may be contained in the files. The Survey collects, catalogs, and archives data on mineral properties regardless of its views of the veracity or accuracy of those data.

02/26/90

ARIZONA DEPARTMENT OF MINES AND MINERAL RESOURCES FILE DATA

PRIMARY NAME: AINSWORTH MINE

ALTERNATE NAMES:

OREGON GROUP  
COCHISE  
COCHISE-BULLION  
KING AINSWORTH

COCHISE COUNTY MILS NUMBER: 16

LOCATION: TOWNSHIP 17 S RANGE 31 E SECTION 5 QUARTER NE  
LATITUDE: N 31DEG 58MIN 40SEC LONGITUDE: W 109DEG 11MIN 17SEC  
TOPO MAP NAME: PORTAL - 7.5 MIN

CURRENT STATUS: PAST PRODUCER

COMMODITY:

ZINC  
LEAD  
COPPER  
SILVER  
GOLD LODE  
TUNGSTEN  
MOLYBDENUM

BIBLIOGRAPHY:

KEITH, S.B., 1973, AZBM BULL. 187, P. 53  
ADMMR AINSWORTH MINE FILE  
USBM 1949 MINERALS YEARBOOK  
USBM RI 5650, P 15, 16

NUMBER 16	FILE F	CONT 0	CONT1 N	PRNAME AINSWORTH MINE						ALTNAME1 OREGON GROUP
ALTNAME2 COCHISE				ALTNAME3 COCHISE-BULLION						
ALTNAME4 KING AINSWORTH				ALTNAME5						
ALTNAME6				CURSTAT PAST PRODUCER	MNAME PORTAL - 7.5 MIN				NLAT 31	
NLATMIN 58	NLATSEC 40	WLONGDEG 109	WLONGMIN 11	WLONGSEC 17	TOWN 17 S	RANGE 31 E	SECTION 5	QUARTER NE	COM1 ZN	MOD1
COM2 PB	MODI2	COM3 CU	MODI3	COM4 AG	MODI4	COM5 AU	MODI5 LODE	COM6 W	MODI6	
COM7 MO	MODI7	BIB1 KEITH. S.B., 1973. AZBM BULL. 187. P. 53								
BIB2 ADMMR AINSWORTH MINE FILE										
BIB3 USBM 1949 MINERALS YEARBOOK										
BIB4 USBM RI 5650. P 15. 16										
BIB5										
BIB6										
BIB7										
BIB8										

AINSWORTH MINE

COCHISE COUNTY  
CALIFORNIA DIST.  
T17S R31E Sec. 5

Cochise County MILS Index #16

Portal 15' Topo (included in file)

AEC 172-478 P. 23 - King Ainsworth (old Cochise)  
No uranium samples

ABM Bull. 187, p. 18, 30

RD 12/24/73



UNITED STATES  
DEPARTMENT OF THE INTERIOR  
GEOLOGICAL SURVEY

HEAD

109° 15' 32" 00" W 666000m E R. 30 E 70 000 FEET (N. MEX.) 18 MI. TO ARIZ. 86 10' R. 31 E. (VANAR)

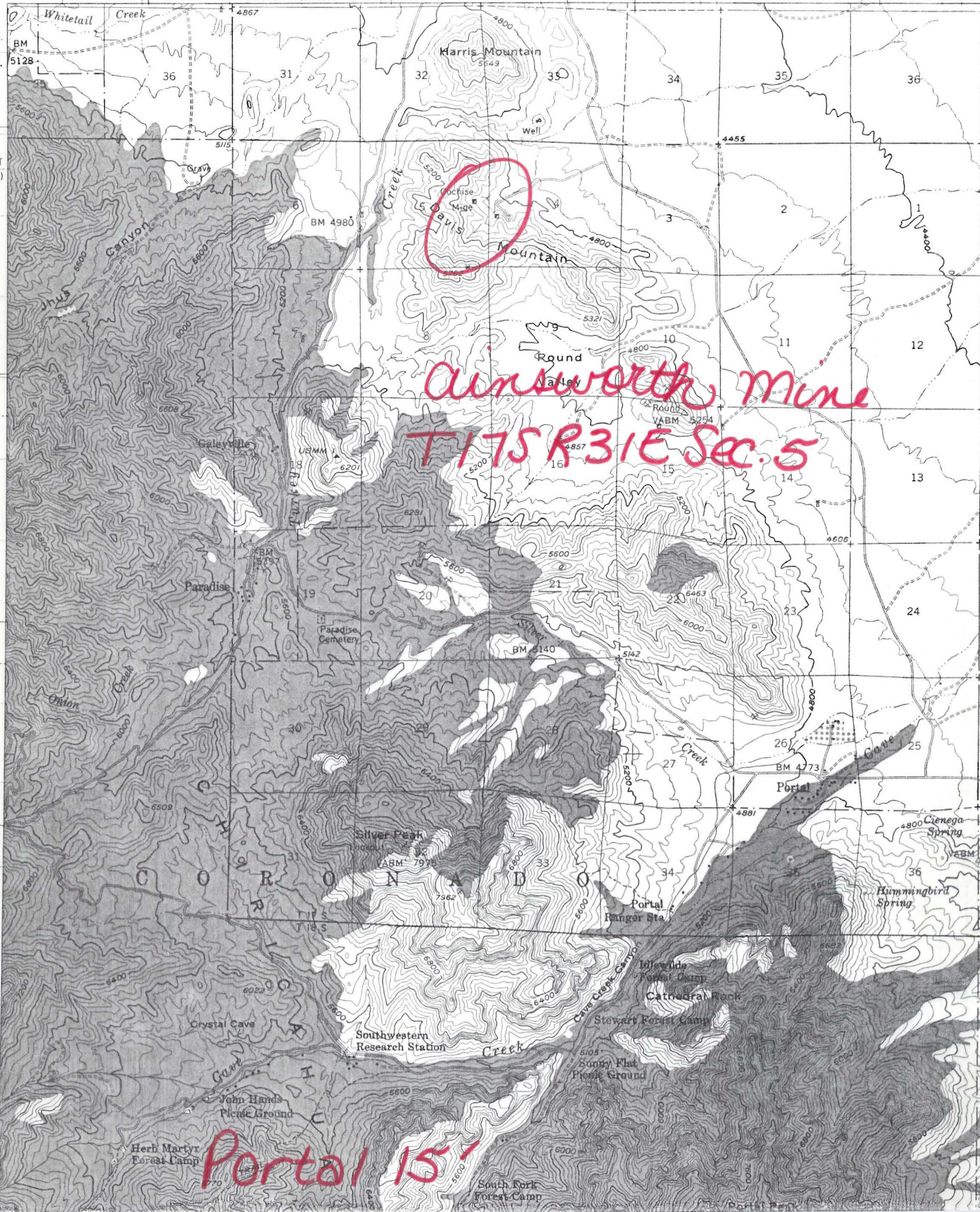
T. 16 S.  
3541000m N.

0000 FEET  
(N. MEX.)

55'

40 MI. TO U.S. 666

(CHIRICAHUA PEAK)



AINSWORTH MINE

COCHISE COUNTY

Mr. Emil Schaaf, attended conference, Wilcox County Offices, 4-7-66.  
He wants engineer to visit his mine in future. Formerly Cochise mine in S5, T17S, R31E,  
Portal Quadrangle. GWI 4-7-66

---

Mr. Emil Schaaf at Willcox, reported that he was working on a deal involving his  
Ainsworth property. GWI WR 9-17-66

---

Conference with Emil Schaaf, owner of the Copper Hill group. Assessment work only  
on property. GWI WR 1-13-68

---

Had a field interview with Virgil Owens, Willcox, part owner of the Ainsworth.  
GWI WR 10-11-69

---

Visited the Ainsworth mine - no one around. GWI WR 2-7-70

---

Visited Ainsworth mine - no activity. GWI WR 10-10-70

---

Mine visit - King Ainsworth mine. GWI WR 6-7-71

---

Field Interv. Mr. E. Schaaf owner of the King Ainsworth group. GWI WR 2/8/72

---

Field interview with Virgil Owens of Willcox. Mr. Owens has a property in New Mexico near  
the Phelps Dodge new smelter and said that he would like to find somebody to take a look  
at it so I told him that when I have the chance, I would give this information to the  
Phelps Dodge Exploration Department as I had other things to discuss with him. GWI WR  
10/3/72

---

Field interview with Virgil Owens also of Willcox reports that he did not do assessment  
work at the Ainsworth area. GI WR 3-27-74

---

No activity, looked at quartzite bed with thought of a silica supply. WR GI 5-13-77

---

*Ainsworth*

DEPARTMENT OF MINERAL RESOURCES

STATE OF ARIZONA  
FIELD ENGINEERS REPORT

Mine Copper Hill Group Date November 23, 1964  
District California (Chiricahua) District - Engineer Axel L. Johnson  
Cochise County  
Subject: Field Engineer's Report. Information from E.F. Schaaf

References: Report of July 11, 1962

Number of Claims: Same as last report (July 11, 1962)

Owners: Same as last report (July 11, 1962)

Principal Minerals: Same as last report (July 11, 1962)

Present Mining Activity: None at present. Mr. Schaaf is looking for a drill to purchase for the purpose of putting down additional drill holes on the property.

Geology: Same as last report. In addition, Mr. Schaaf reports an outcrop of Bolsa Quartzite, running E & W for a distance of 1900 ft.

Ore Values: Recent samples taken show following values: -

- (1) In an open cut on the quartzite outcrop assays run 1.4% to 14.6% copper.
- (2) In an open trench on the limestone-andesite porphyry contact assays ran:
  - (a) 1.8% copper; 2.5% zinc; 64.4% silica
  - (b) 3.04% copper; 0.7% zinc; 75.6% silica

Review of Recent Operations:

- (1) No additional work was done in the iron (limonite) outcrop. (See report of 7/11/62 - under "New Workings.")
- (2) The open trench cut on the limestone-andesite porphyry contact was extended an additional 27 ft. The mineralization was  $6\frac{1}{2}$  ft. wide and ran as shown above under "Ore Values" (2)
- (3) Two open cuts were made in the Bolsa Quartzite viz:
  - (a) 50 ft. long x 12 ft. wide x 12 ft. deep
  - (b) 30 ft. long x 8 ft. wide x  $6\frac{1}{2}$  ft. deep - assaying as shown under "Ore Values" (1)
- (4) Diamond drilling was done near the old 340 ft. vertical shaft (Ainsworth shaft) on contract. After drilling one hole to a depth of 68 ft., the contractor was forced to discontinue the work, because his drill was too small, according to Mr. Schaaf.

Proposed Plans: The owners plan to diamond drill or churn drill with their own drill rig, which they plan to purchase.

Mr. Schaaf asked the field engineer about the Hossfeld Prospecting Drill (churn drill), which drills 1-3/4" to 2-5/8" holes a maximum distance of 110 ft. Field engineer suggested that a wagon drill might be better, but Mr. Schaaf said they had only an 85# compressor, which is too small for a wagon drill.

STATE OF ARIZONA  
DEPARTMENT OF MINERAL RESOURCES  
MINERAL BUILDING, FAIRGROUNDS  
PHOENIX 7, ARIZONA



July 26, 1962

Mr. Axel L. Johnson  
P. O. Box 5047  
Tucson, Arizona

Dear Axel:

About 1942, W. H. Wilson et al were granted a preliminary RFC loan of \$5,000 to unwater and rehabilitate workings of the Ainsworth shaft, located in Sections 4 and 5, T 17 S., R. 31 E. A good job was done but it appeared that they had been misled about the quantity of ore underground. The 300 level was mapped and sampled and the shoots were found to be narrow and short, so a further loan was not recommended.

This mine was near 3 others which applied for R.F.C. loans. Two were turned down and we have no record of what happened to the third, which was for the King mine. W. H. Wilson, et al also made the King application. It's granting apparently depended upon what the smelter would give as premium for its silicious ore.

The original application was for a \$10,000 loan. It was turned down. The company then put up a 174 ft. raise to the surface, which did not disclose ore wide enough to sample, and opened a few new faces on the lower level from which they mined about 35 tons of ore. A sample of this ore assayed 3.35 percent copper and 2.0 ounces of silver per ton. The examiner sampled only that part of the ore zone considered ore by the applicant and took five samples. These together with four former samples taken for the first application gave the following weighted averages: Width 33 inches, silver 1.06 ounces per ton and copper 2.75 per cent. The length of this ore showing was given as 50 feet.

As you know, we cannot release the reports we were given. They can only be examined here and notes made. The maps can only be traced without names and we are too short-handed to do the work here now. Mrs. Pare leaves on vacation tomorrow and I have insufficient time for the things I must do.

Enclosed is a photocopy of a page from The Mines Handbook, 1931, with item regarding Ainsworth Copper Co., successor to King Copper Co., and Cochise Consolidated Copper Co. King Copper was organized in 1917. The same interests handled both King Copper and Ainsworth Copper. A 1931 report mentions no production or work by the latter but says that "the Treasury vein of lead-zinc ore was mined by lessees "since late 1926." The property

C  
O  
P  
Y



7-26-62

was leased to a Coronado Copper Corp. in 1929. It reportedly was formed to take over a lease and option of the Ainsworth Copper Co. property. It is not even mentioned in the 1937 Mines Register and Ainsworth Copper is marked inactive. The latter evidently remained dormant and I find no record of activity at the properties until W. H. Wilson came along. The claims evidently were unpatented and have passed into other hands.

There is considerable worthwhile information in the files if Mr. Schaaf can get over to look at it.

Sincerely,

FRANK P. KNIGHT,  
Director.

FK:p  
Enc.

NAME OF MINE: AINSWORTH

COUNTY: COCHISE S  
DISTRICT: CALIFORNIA  
METALS: COPPER AND LEAD

OPERATOR AND ADDRESS:

MINE STATUS

DATE:

DATE:

9/30/42 W. H. Wilson, Portal, Ariz.

9/30/42 Mine Owner's report on file....Mr. Wilson, lessee, applied for and was granted \$5000 RFC loan

COCHISE CONSOLIDATED COPPER CO.

ARIZONA.

Office: 1404 Arrott Bldg., Pittsburg, Pa. Mine office: Paradise, Cochise Co., Ariz. Employs about 50 men, mainly Mexicans. Henry F. Alexander, president and general manager; W. C. Hagan, vice-president; Howard H. Douglas, consulting engineer; Harry Holburn, superintendent; C. S. Hagan, mill superintendent. Capitalization \$1,500,000, shares \$1 par. Lands, 17 claims, including the Davis group of 13 claims, bought for \$82,500, lying about 6 miles northeast of Paradise, where the company has platted a townsite called Pittsburg. The 150' Ainsworth shaft is sunk at an angle of 60°. The Treasure shaft shows a 4' vein giving average assay values of about \$75 per ton in copper, gold and silver. The 180' two-compartment Duplex shaft shows mixed sulphides, carrying high values in copper, gold and silver, and containing heavy percentages of zinc. Machinery includes Webber 5-h. p. and 150-h. p. gasoline engines, and a small electric light plant. The mine shipped some ore to smelters, late in 1904, and is building a concentrator, which should be in operation before end of 1906. The mill is 62x100', 45' high and is to have one crusher, 3 sets of rolls, 3 elevators, 2 jigs and 2 settling tanks. Water is from two wells and is pumped into five 6,000-gallon tanks, requiring 2,500 gal. daily. Property considered promising.

Your name and address has been furnished to -  
Edward Smith, P.O. Box 1923, Phoenix, Arizona,

who has made inquiry for the same with reference to mining  
property listed with the Department of Mineral Resources.

DEPARTMENT OF MINERAL RESOURCES  
J. S. Coupal, Director

Washington, D. C.  
Nov. 4, 1949

SUBJECT: Properties  
P-36  
Area Coordinator  
Title and interests

These are the names of the properties of the Ainsworth Co. in Arizona.  
I have to refer to the map they attached and that to you.  
I hope that these properties are not held by the Ainsworth Co.

Very respectfully,  
[Signature]

C  
O  
P  
Y

July 26, 1942 .

MEMORANDUM

AINSWORTH MINE ✓  
(King Copper Co.) ✓ *W*

To: Director, Dept. Mineral Resources  
From: George A. Ballam

✓ *dec'd* Walter Wilson, owner of this property, has applied for a \$5000 preliminary development loan with which he proposed to unwater the King shaft, retimber, and clean out a cross-cut on the 200 level, continuing to drive it about 100 ft to intersect zinc beds. These beds, lying at about 40°, have been stoped from a tunnel in the upper levels. Wilsons proposed development will give him another 200 ft. backs in good ore zone.

*George A. Ballam*

DEPARTMENT OF MINERAL RESOURCES

STATE OF ARIZONA

FIELD ENGINEERS REPORT

Mine Copper Hill Group  
(Formerly called Cochise Mines)  
(has also been called Ainsworth Mine ) Date July 11, 1962

District California (Chiricahua) District- Engineer Axel L. Johnson  
Cochise County

Subject: Field Engineer's Report. Information from E. F. Schaaf

Location Sections 4, 5, 8 & 9 - T17S - R31E. Take Highway #86 east from Willcox. Turn right (south) 2 miles east of San Simon, continuing for 17 miles. Turn left and take road marked "To Portal" and continue for 4 miles. Turn right at red streamer on bush and sign "Private Road-Keep Out". Drive about 2 miles on newly graded mine road to the property.

Number of Claims 67 unpatented claims on Federal land outside the National Forest. These include the following groups-Copper Hill, Copper Glance, Nickett and Explorer.

Owners E. F. Schaaf, Box 2178, Willcox, Ariz. (718 W. Stewart St.)  
Mrs. E. F. Schaaf (Address above)  
Virgil Owens, Farmers Pump Co., Willcox, Ariz.

Principal Minerals Copper, Lead, Zinc, Gold, Silver.

Present Mining Activity Constructing and repairing roads. Working in open cut, stockpiling a small amount of ore.

Geology & Mineralization Most of the country rock is dark gray limestone, which in several places, shows faulting, fissuring and alteration. This massive bed of limestone has been intruded by an andesite dyke, from 60 to 100 ft. in thickness, striking almost due E. and W., and dipping 60° to 70° to the north. A number of narrow quartzite beds are also found within the limestone formation. A mineralized zone, containing copper, lead and zinc from 2 to 5 ft. in width, is found on the contact between the limestone and the andesite. Also mineralization is found along faults and fissures in the limestone rock, and in the quartzite beds.

Ore Values Assays taken on the limestone-andesite contact run from 3 to 9% copper, 9 to 13% lead and about 6% zinc, with traces of silver and gold.

Milling and Marketing There is no mill on the property. A mill should be considered if enough milling grade ore is found to justify the cost of installation. Direct shipping ore has to be trucked about 25 miles to San Simon for shipment to the smelter. The ramp and spur at San Simon would have to be repaired before shipments can be made from this point.

Past History

- (1) Mine was once called Cochise Mines, and was for a time called Ainsworth Mine, a Mr. Ainsworth being one of the former owners.
- (2) Some of the old workings were reported to have been made from 1890-1900.
- (3) The 340 ft. vertical shaft (item 1) was reported to have been sunk from 1900-1906.

Copper Hill Group  
California (Chiricahua) Dist., Cochise Co.  
Axel L. Johnson

(4) Cochise Mining Co. is reported to have conducted a stock promotion deal in 1916 to 1918, selling 1,000,000 shares of stock at \$1.00 par. Company worked in the 850 ft. tunnel (item 2) and also in the 340 ft. shaft (item 1).

#### Recent History

(1) Present owners relocated 33 claims in Secs. 8 and 9 in 1957, allowed them to lapse, and picked them up again in 1959.

(2) Present owners located an additional 34 claims in Secs. 4 and 5 in 1960 and 1961.

(3) Road building was started in 1960 and continued in 1961 and 1962. About  $6\frac{1}{2}$  miles of good road has now been built.

(4) A geological report and a map of the property was made by Leonard C. Clark, registered engineer, Tucson, Ariz. (date of map July 25, 1961)

#### Old Mine Workings

(1) 1 vertical shaft - 340 ft. deep, accessible to a depth of 280 ft. on dewatering, and B. O. below 280 ft. Water level now 100 ft. below the collar. Shaft dump contains mixed oxides and sulfides of lead, copper and zinc. The ore in the dump evidently has been oxidized since the shaft was sunk about 1903. The ore removed from the shaft is reported to have been found in quartzite beds in the limestone formation.

(2) 1 adit-850 ft. long, striking almost due E & W, driven by Cochise Mining Co. in 1916 to 1918. The adit went in following a small ore vein in black lime, the vein dipping 60° to 70° to the north. There were a few short cross cuts from the adit, and a few stopes above same. About 500 tons of ore, grossing \$45,000, was reported to have been shipped from the largest stope about 100 ft. from the portal. Not enough ore remains in this adit to warrant any future mining operations.

(3) 1 vertical shaft-500 ft. deep, filled with water up to 100 ft. from the surface. Mine dump shows no ore but an abundance of sandstone and quartzite.

(4) 1 adit about 250 ft. long on west slope of mountain. Inaccessible. Dump shows some copper mineralization and iron pyrites.

(5) Small adit with estimated length of 50 ft. Inaccessible. This was driven across a quartzite bed. Dump shows fairly good indications of copper with traces of gold.

Copper Hill Group  
California (Chiricahua) Dist., Cochise Co.  
Axel L. Johnson

(6) A large number of additional old workings, mostly caved and inaccessible.

New Mine Workings (1) 1 open cut made in an iron (limonite) outcrop. The limonite shows no copper ore, but there are small veins containing copper oxides surrounding the iron outcrop. More exploration work, preferably drilling, is required.

(2) An open trench cut on the contact between the limestone and the andesite. This cut is about 6 ft. wide and 18 ft. deep, exposing the contact. The contact strikes due E & W and dips 60° to 70° to the north. Mineralization is about 3 ft. wide near the surface and widens to about 5½ ft. at a depth of 18 ft. Minerals are chalcopyrite, bornite, galena and sphalerite. Assays on samples taken run 3 to 9% copper, 9 to 13% lead and about 6% zinc.

Stockpiles Mr. Schaaf has the following ore stockpiles:

- (1) 20 tons of mixed oxides and sulfides dug from the 340 ft. shaft dump.
- (2) 10 tons of mixed oxides and sulfides also dug from the same dump.
- (3) 5 tons of sulfides from the 850 ft. adit.
- (4) 2 tons of ore from the iron outcrop.
- (5) 10 tons of sulfide ore from the limestone-andesite contact.

Proposed Plans Mr. Schaaf plans on working the 340 ft. shaft dump and providing a mill for milling the ore. This might present some problems as the dump is partly oxidized.

He also plans on doing additional exploration work at the iron outcrop and on the andesite-limestone contact in order to develop enough tonnage of ore for a profitable mining and milling operation.

701, +8  
Found in Neil Parker's Cu  
pickup after he quit.  
J.J.S.

CONSOLIDATED ARIZONA METAL PRODUCERS CORP.

PORTAL, ARIZONA  
May 1st. 1948.

Eagle Pitcher Mining & Smelting Co.,  
Sahuarita, Arizona,  
Sirs:

We are re-opening our King-Ainworth mine, located seventeen miles from Rodeo, New Mexico on the Southern Pacific, and twenty three miles from San Simon, Arizona, also on the S. P. It would cost us probably about fifty cents more per ton to truck to San Simon then Rodeo, but the R. R. rate to your plant may be cheaper from San Simon.

From a large general sample in the sulphide zone we obtained the following analysis.

Insol.	Fe.	Au.	Ag.	Cu.	Pb.	Zn.
46%	1.40%	.002	0.30	0.05	8.20%	11.40%

Non-Sulphides 0.01 0.65 0.75

Of course we realize you probably have to treat each shipment separately, but without any obligation could you tell us approximately what this ore would net us F. O. B. either San Simon, or Rodeo.

We have about 2,000 tons of a mixed carbonate and sulphide overlying this sulphide ore body, but I don't know whether you can handle it or not. It analyzes as follows:

Insol.	Fe.	Au.	Ag.	Cu.	Pb.	Zn.
47.6%	1.60%	.003	0.35	0.05%	10.2%	11.3%

Non-Sulphides 0.05 7.2% 8.1%

We could ship this mixed ore right away at a rate of a minimum of 100 tons per week. It will take about thirty days to shape up a stope in the sulphides and then we could average a minimum of about 100 tons per week.

Yours very truly,

*W. H. Wilson*

W. H. Wilson, Mgr.



Ainsworth Mine  
Cochise County  
Arizona

Memo.

The Ainsworth property is located about 1 mile southeast of the Harris Group of Mines, and the formation, and deposits, are probably an extension of the Harris Group. Highway from Rodeo, N.M. approaches the mine -- last mile of road to mine, from highway, good desert road. Distance to Rodeo about 14 miles.

Formation. Limestone, quartzite, porphyry. Porphy intrusions and footwall.

Development.

One 300-ft shaft, with short drifts (Ainsworth shaft), one 200' shaft (Wilson) and adit tunnel on strike of vein about 800 feet in length.

The strike of the vein -- quartzite and quartzite, in limestone, with limestone hanging wall and porphyry (probably diorite) foot wall -- northwest-southeast and dip southwest at about 30° from horizontal.

The Ainsworth shaft, separated by several hundred feet, are on same vein formation, but the Wilson shaft to southwest sunk in hanging wall and probably did not reach vein. Shafts inaccessible -- 500-ft adit in good shape.

The vein, as exposed in 500-ft adit, is very uniform and persistent in strike and dip, but at times very narrow. Where stoped to the surface for about 300 feet along strike, <sup>stoped</sup> ending on tunnel level at about 500' from portal of adit, it shows a width of from 3' to 5'. The ore shoot rakes to the northwest and but little mineralization shows in the adit beyond the end of the 300' stoped ground. Winzes sunk from adit level show downward continuation of ore under stoped area. Ore in shoot from a short distance above adit level to surface mainly in carbonate (lead and zinc) form; on level of adit, and below, ore becomes base (sulphides of lead and zinc and small amount copper).

Samples.

Sample No.	Description	Gold Oz. PerTon	Silver Ozs. PerTon	Lead %	Zinc %	Copper %
1.	Disseminated lead-zinc-copper-iron sulphides; selected from dump at collar 300-' shaft, from Dr. bottom shaft	Tr.	1.90	18.60	Not Det'd	1.08
2.	Bedded base ore, about 18" thick, in incline winze below stoped ground, 800' adit level workings	Tr.	0.80	20.00	27.90	---
3.	Oxidized (carbonate) lead-zinc ore in place, tunnel level about 300' from portal -- stoped to surface	Tr.	0.40	7.80	19.30	---

Ainsworth Mine, FHL, #2, 6/17/38.

In event of operation of the Hilltop mine, or other properties in the district, the Ainsworth should be given further consideration. Indications are favorable for finding a worth-while deposit of bedded base ores with deeper work from the 800' adit level, - and sample results of ore found on dump of the 300-ft shaft indicate good lead-zinc showing in the short drift driven from bottom of the shaft. Mr. Epley, who was at one time foreman on the Ainsworth, is authority for statement regarding ore occurrence in the 300-ft shaft drift.

The Ainsworth control holding is held by the Basset Lumber Co., (or by the manager of the lumber company whose name I cannot now recall) in Douglas, and the property can be acquired on practically "own-quoted" terms.

The mineralization showing on the surface of the Ainsworth is strong, and the vein evidently persistent for several hundred feet. I do not feel, however, that the property <sup>can be</sup> considered alone for a large tonnage production.



F.H. Lerchen.

Tucson, Arizona, June 17, 1938.  
Ainsworth visited March 30, 1938.

EXCERPT FROM LETTER F.H. LERCHEN, 4/1/38

"Looked the Harris (Epley-Pederson) Property and the Ainsworth (adjoining) over Wednesday. Nothing startling \$500.00 is plenty high for 1/2 interest in the Harris group- and Ainsworth "interesting" and worth further attention - nothing startling, however, - narrow bedded deposits carbonate of lead and zinc.

FHL.

DEPARTMENT OF MINERAL RESOURCES  
STATE OF ARIZONA  
FIELD ENGINEERS REPORT

RECEIVED  
JAN 27 1955  
DEPT. MINERAL RESOURCES  
PHOENIX, ARIZONA

Mine Ainsworth Date Jan. 1, 1955  
District California Mining Dist., Cochise Co. Engineer Axel L. Johnson  
Subject: Present Status. Information from Frank L. Higgins, Willcox, Ariz.  
Location Near Paradise.  
Metals Copper, Lead.  
Owner Frank Nolan, San Simon, Ariz. Purchased on tax sale.  
Present Status Mine is idle.

NOLAN, FRANK (Owner)  
San Simon, Arizona

MINE: AJAX, Calif. Mining Dist., Cochise Co. - Near Paradise.

MINE: AINSWORTH, " " " " " " 1-1955

DEPARTMENT OF MINERAL RESOURCES  
STATE OF ARIZONA  
FIELD ENGINEERS REPORT

Mine Ainsworth Date Jan. 1, 1955  
District California Mining Dist., Cochise Co. Engineer Axel L. Johnson  
Subject: Present Status. Information from Frank L. Higgins, Willcox, Ariz.

Location Near Paradise.

Metals Copper, Lead.

Owner Frank Nolan, San Simon, Ariz. Purchased on tax sale.

Present Status Mine is idle.

UNITED STATES  
DEPARTMENT OF THE INTERIOR  
BUREAU OF MINES

File No. ~~15~~  
14

SUMMARY REPORT OF MINERALS EXAMINATION

State ARIZ. County Cochise Mineral Products Lead, Copper, Silver + tungsten

Name of property or deposit King Copper claims, formerly King-Denworth Mine. Washed extensively by Cochise Consolidated Copper Company.

Date examined 3/14/57 Engineer V.B. Dale Date of this report 4/11/57

Reason for examination Appraisal of tungsten deposits, Ariz & N.Mex. Auth. 2078

Engineer accompanied by No one Address \_\_\_\_\_

Extent of property 5 claims, not patented.

Owner A. F. Noland Address Parish, Ariz.

Leased or optioned to No one Address \_\_\_\_\_

Location of property (be specific) Secs. 45, 7, 173., R 31 E

17 1/2 miles southerly on Paradise Road from Hwy. 86; thence 2.5 miles southeasterly; thence 1.2 miles westerly. Type of deposit and mineralogy (brief description) Replacement deposit

between limestone and quartzite. Contains lead, copper, + iron oxides + sulphides. The U.V. lamp indicates appreciable scheelite mineralization.

Known dimensions of the deposit  
Length Unknown Width Unknown Depth Unknown

Attitude of the deposit (strike, dip, etc.) N 75° W and dips 49° Southwest

Possible extensions; correlation of known showings Unknown

Mine workings (brief description or attach map or sketch) (indicate whether accessible) there are numerous shafts, adits, drifts, crosscuts, raises, and stopes. Many are inaccessible. Adit containing scheelite is accessible

(over)

Mining and milling equipment on property..... *None.*

Past production (if any)..... *Unknown.*

Present rate of production (if any)..... *None.*

Sampling (describe briefly, or attach sketch)..... *2 or 3 tons of ore in an old <sup>chute</sup> contains schelite. A grab sample was taken from this chute, which assayed 1.70% WO<sub>3</sub>.*

Tentative Estimate of Reserves

(Subject to revision when assays are received or after engineering calculations)

Measurable..... ~~*1 grab sample from ore in chute assayed 1.70% WO<sub>3</sub>*~~ tons..... Grade.....

Indicated..... *Unknown* tons..... Grade.....

Inferred..... *Unknown* tons..... Grade.....

Mining method (actual or suggested)..... *None*

Milling or processing method (actual or suggested)..... *None*

Processing tests suggested..... *None*

Tentative conclusion and decision..... *Since the one assay taken here was satisfactory, a map of the mine will be made and a more thorough study undertaken.*

To be accompanied by brief letter giving examining engineer's general impression of the deposit, his impression of the owner, and any other confidential information he may care to submit. Refer to any known prior examinations and reports. May be executed in pencil. Should be mailed within 24 hours after examination is completed.

Send original and one copy to Washington Office.

oc

DEPARTMENT OF MINERAL RESOURCES  
STATE OF ARIZONA  
OWNERS MINE REPORT

MA 13

Date August 10th, 1939

Mine  Ainsworth.

District California Mining District.

Location Cochise County, Arizona.  
4 miles N.E. of Paradise, Arizona

Former name  King Copper Company

Owner  Ainsworth Copper Company

Address Douglas, Arizona

Operator No one.

Address

President  Albert Stacy

Gen. Mgr.  Robert A. Wehr.

Mine Supt.

Mill Supt.

Principal Metals  Copper and Lead

Men Employed None

Production Rate None

Mill: Type & Cap. None

Power: Amt. & Type None

Operations: Present None

Operations Planned None.

Number Claims, Title, etc. 63 Unpatented

Description: Topog. & Geog. Located on the east foot hills of the Chiricahua mountains where Turkey creek enters the San Simon valley; easily accessible by good, graded road.

Mine Workings: Amt. & Condition Quite a large amount of work has been done on the property, including tunnels and shafts. The Ainsworth shaft is 320 feet deep with drifts and cross-cuts at the 300 level. There are several shafts 100 or more feet deep and a 700 foot tunnel. There is a good showing of ore in all workings.

(over)



Geology & Mineralization See copy of Botsford report on the property.

Ore: Positive & Probable, Ore Dumps, Tailings

Mine, Mill Equipment & Flow Sheet All sold to pay debts.

Road Conditions, Route Good: About 6 miles north of Portal on Hilltop and San Simon road. There is a graded road to the property from the Hilltop road and a car or truck can be driven to the principal workings on the property.

Water Supply Good: From well at Turkey Creek and from Ainsworth shaft.

Brief History Some work was done on the claims in the early 1880's by George Kingdon. Later some of the claims were owned by Henry Morgan, of Willcox and O. C. Davis who shipped several carloads of ore and sold their claims for \$90,000.00 cash. The buyers organized a company and equipped the property with machinery and then disagreed among themselves and did very little mining. Later King Copper Co. was organized by creditors and in 1925 the creditors of King Copper Co. organized Ainsworth Copper Co., present owners.  
Special Problems, Reports Filed

Remarks All geological and engineering reports on the property have been very favorable.

If property for sale: Price, terms and address to negotiate.

Property is for sale. Address Albert Stacy, Douglas, Arizona

Signed.....

Use additional sheets if necessary.