



## **CONTACT INFORMATION**

Mining Records Curator  
Arizona Geological Survey  
1520 West Adams St.  
Phoenix, AZ 85007  
602-771-1601  
<http://www.azgs.az.gov>  
[inquiries@azgs.az.gov](mailto:inquiries@azgs.az.gov)

The following file is part of the

Arizona Department of Mines and Mineral Resources Mining Collection

## **ACCESS STATEMENT**

These digitized collections are accessible for purposes of education and research. We have indicated what we know about copyright and rights of privacy, publicity, or trademark. Due to the nature of archival collections, we are not always able to identify this information. We are eager to hear from any rights owners, so that we may obtain accurate information. Upon request, we will remove material from public view while we address a rights issue.

## **CONSTRAINTS STATEMENT**

The Arizona Geological Survey does not claim to control all rights for all materials in its collection. These rights include, but are not limited to: copyright, privacy rights, and cultural protection rights. The User hereby assumes all responsibility for obtaining any rights to use the material in excess of "fair use."

The Survey makes no intellectual property claims to the products created by individual authors in the manuscript collections, except when the author deeded those rights to the Survey or when those authors were employed by the State of Arizona and created intellectual products as a function of their official duties. The Survey does maintain property rights to the physical and digital representations of the works.

## **QUALITY STATEMENT**

The Arizona Geological Survey is not responsible for the accuracy of the records, information, or opinions that may be contained in the files. The Survey collects, catalogs, and archives data on mineral properties regardless of its views of the veracity or accuracy of those data.

PRINTED: 09-28-2012

ARIZONA DEPARTMENT OF MINES AND MINERAL RESOURCES AZMILS DATA

PRIMARY NAME: AGUA FRIA PLACER AREA

ALTERNATE NAMES:  
PUZZLER

YAVAPAI COUNTY MILS NUMBER: 1318

LOCATION: TOWNSHIP 8 N RANGE 2 E SECTION 4 QUARTER N2  
LATITUDE: N 34DEG 03MIN 51SEC LONGITUDE: W 112DEG 09MIN 32SEC  
TOPO MAP NAME: BLACK CANYON CITY - 7.5 MIN

CURRENT STATUS: UNKNOWN

COMMODITY:  
UNKNOWN

BIBLIOGRAPHY:  
ADMMR AGUA FRIA PLACER AREA FILE  
USGS BULL 1355 PLATE 1

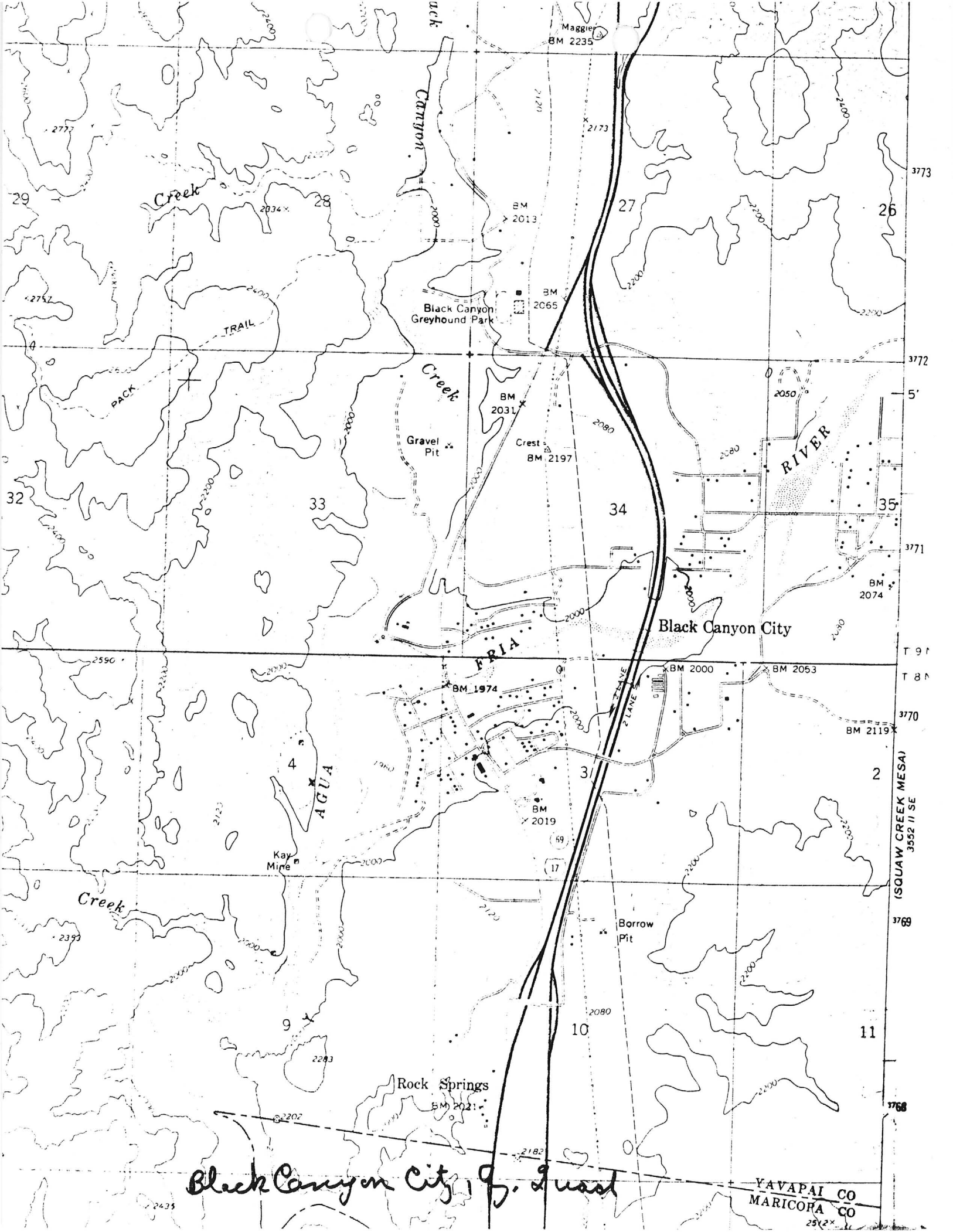
AGUA FRIA PLACER AREA

YAVAPAI COUNTY

(Location 21 - USGS Bulletin 1355, Plate 1)

Puzzler claim - MILS # 1318, AMC #21178, KAP WR 8/10/84

*File  
see MILS 1318 - Yavapai*



Black Canyon Greyhound Park

Black Canyon City

Rock Springs

Black Canyon City, G. Guast

YAVAPAI CO  
MARICORA CO

AGUA FRIA PLACER AREA

10/84

YAVAPAI COUNTY

KAP WR 8/10/84: Ralph Dommin, 8010 N. 15th Street, Phoenix, Arizona 85020, Phone 943-7336 reported he owns the Puzzler claim (AMC #21178) in the N $\frac{1}{2}$ , Sec 4 T8N R2E on the Agua Fria River near Black Canyon City in Yavapai County. He has had the claim for about three years. The claim was located Nov. 19, 1974. The claim is in the Agua Fria Placer area (file) (classified by Plate 1, USGS Bulletin 1355). Mr. Dommin explained he wants to set up an 18' trommel with a pan.

---