



CONTACT INFORMATION

Mining Records Curator
Arizona Geological Survey
1520 West Adams St.
Phoenix, AZ 85007
602-771-1601
<http://www.azgs.az.gov>
inquiries@azgs.az.gov

The following file is part of the

Arizona Department of Mines and Mineral Resources Mining Collection

ACCESS STATEMENT

These digitized collections are accessible for purposes of education and research. We have indicated what we know about copyright and rights of privacy, publicity, or trademark. Due to the nature of archival collections, we are not always able to identify this information. We are eager to hear from any rights owners, so that we may obtain accurate information. Upon request, we will remove material from public view while we address a rights issue.

CONSTRAINTS STATEMENT

The Arizona Geological Survey does not claim to control all rights for all materials in its collection. These rights include, but are not limited to: copyright, privacy rights, and cultural protection rights. The User hereby assumes all responsibility for obtaining any rights to use the material in excess of "fair use."

The Survey makes no intellectual property claims to the products created by individual authors in the manuscript collections, except when the author deeded those rights to the Survey or when those authors were employed by the State of Arizona and created intellectual products as a function of their official duties. The Survey does maintain property rights to the physical and digital representations of the works.

QUALITY STATEMENT

The Arizona Geological Survey is not responsible for the accuracy of the records, information, or opinions that may be contained in the files. The Survey collects, catalogs, and archives data on mineral properties regardless of its views of the veracity or accuracy of those data.

PRINTED: 03/18/2003

ARIZONA DEPARTMENT OF MINES AND MINERAL RESOURCES AZMILS DATA

PRIMARY NAME: ADIT CANYON DIATOMITE

ALTERNATE NAMES:
WHITECLIFFS DIATOMITE

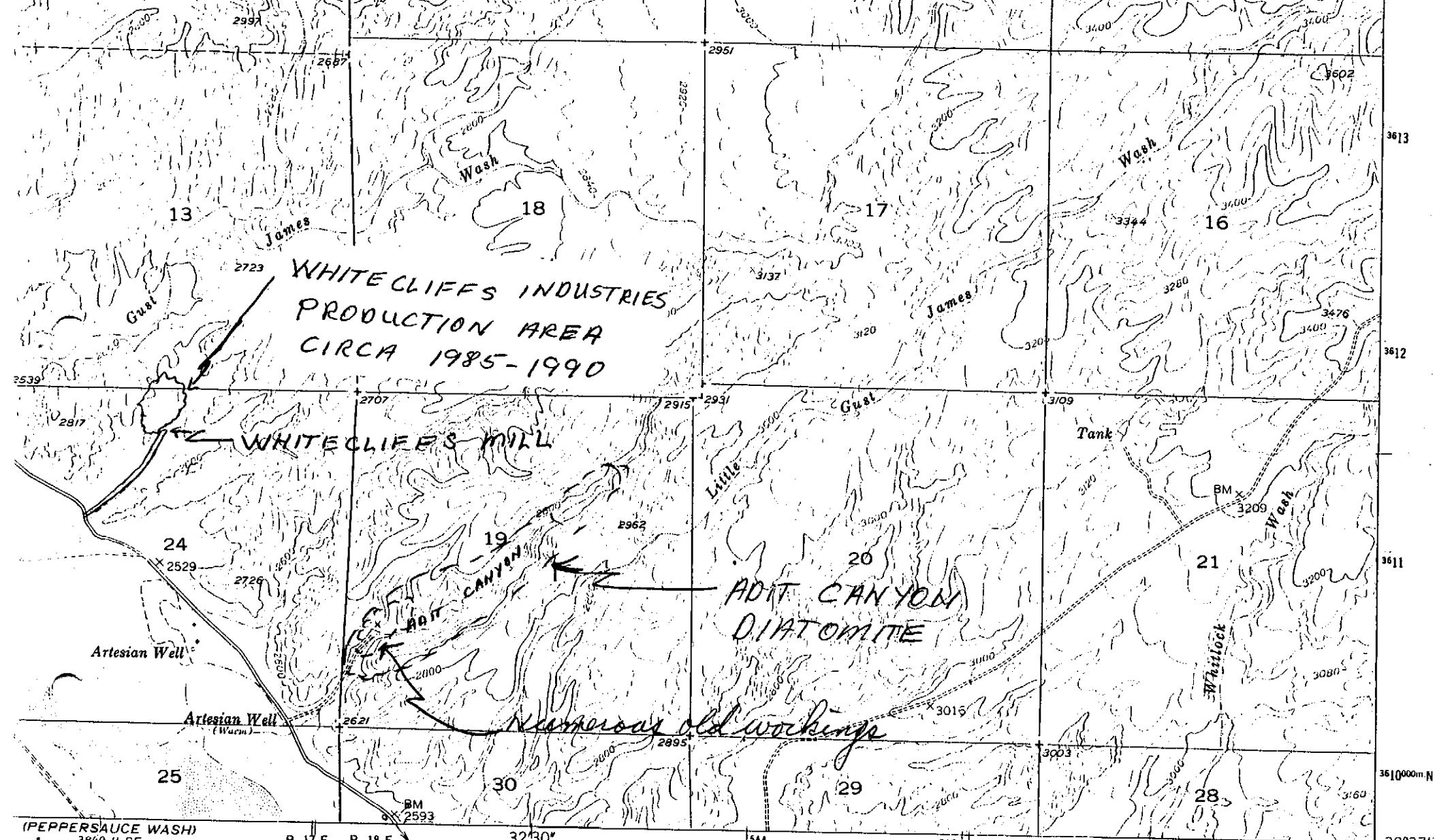
PINAL COUNTY MILS NUMBER: 764

LOCATION: TOWNSHIP 9 S RANGE 18 E SECTION 19 QUARTER ALL
LATITUDE: N 32DEG 38MIN 25SEC LONGITUDE: W 110DEG 32MIN 47SEC
TOPO MAP NAME: CLARK RANCH - 7.5 MIN

CURRENT STATUS: PAST PRODUCER

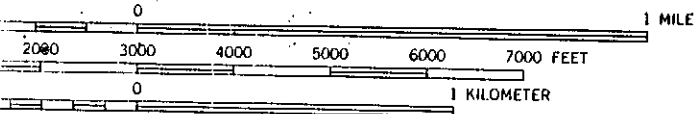
COMMODITY:
DIATOMITE
SILICON DIATOMITE

BIBLIOGRAPHY:
ADMMR ADIT CANYON DIATOMITE FILE
HOUSER, BRENDA B., 1992, INDUSTRIAL MINERALS
OF THE TUCSON AREA AND SAN PEDRO VALLEY,
SOUTHEASTERN ARIZONA, ARIZONA GEOLOGICAL
SOCIETY FIELD TRIP GUIDE, APRIL 4 AND 5,
1992, PP 15-16
SEE: ADMMR WHITECLIFFS FILE



(PEPPERSAUCE WASH)
3849 11 SE

SCALE 1:24000



CONTOUR INTERVAL 40 FEET
DATUM IS MEAN SEA LEVEL



QUADRANGLE LOCATION

ROAD CLASSIFICATION

HARD-SURFACE ALL WEATHER ROADS	DRY WEATHER ROADS
Heavy-duty ——— 4 LANE 16 LANE	Improved dirt ———
Medium-duty ——— 4 LANE 16 LANE	Unimproved dirt ———
Loose-surface, graded, or narrow hard-surface	
Ⓜ U. S. Route	Ⓢ State Route

CLARK RANCH ARIZ